

Assets & Works

CCB Executive – 15 November 2018



West Nowra Waste Processing Facility

ART of Waste

Advanced Recycling Technology



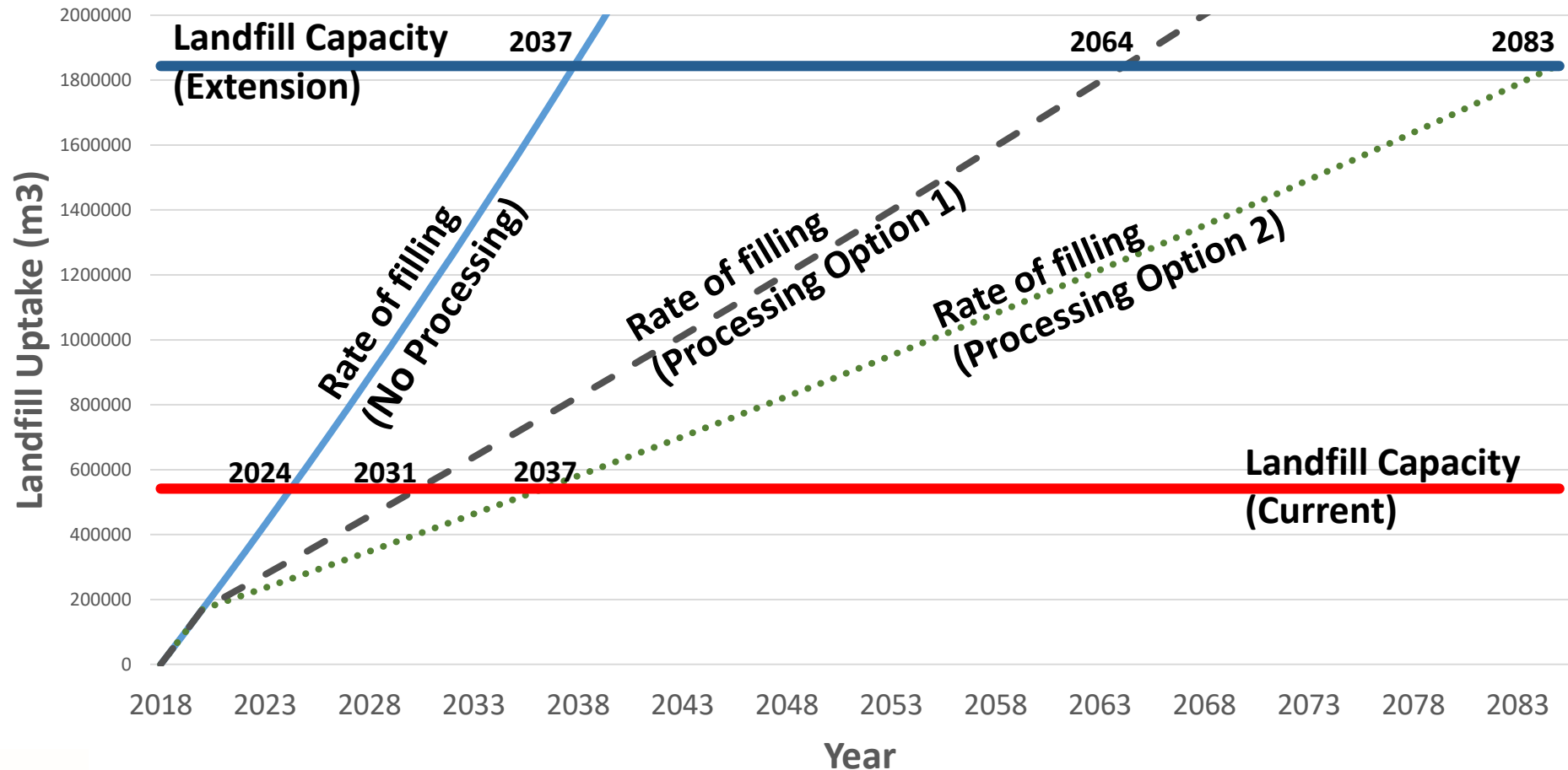
Proposal

council@shoalhaven.nsw.gov.au | www.shoalhaven.nsw.gov.au

- Invite tenders to process mixed municipal waste
- Two tenders shortlisted and further investigated
- Estimated 20 year contract
- Process all red bin waste
- No change to yellow recycling bin
- Opportunity to accept other mixed municipal waste
- Gate fee value approximately \$310 million over 20 years

Effect on Landfill Life

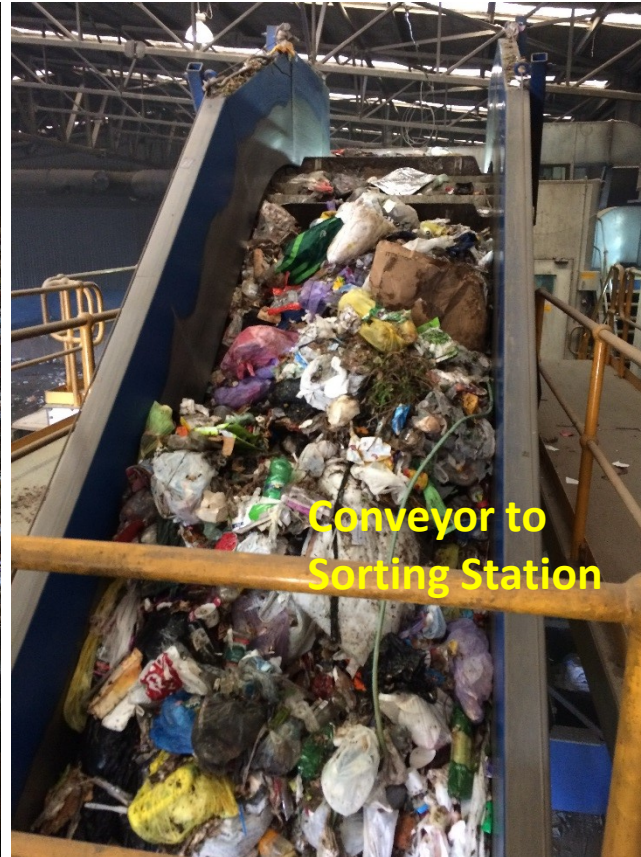
council@shoalhaven.nsw.gov.au | www.shoalhaven.nsw.gov.au



Company 1 Technology

council@shoalhaven.nsw.gov.au | www.shoalhaven.nsw.gov.au

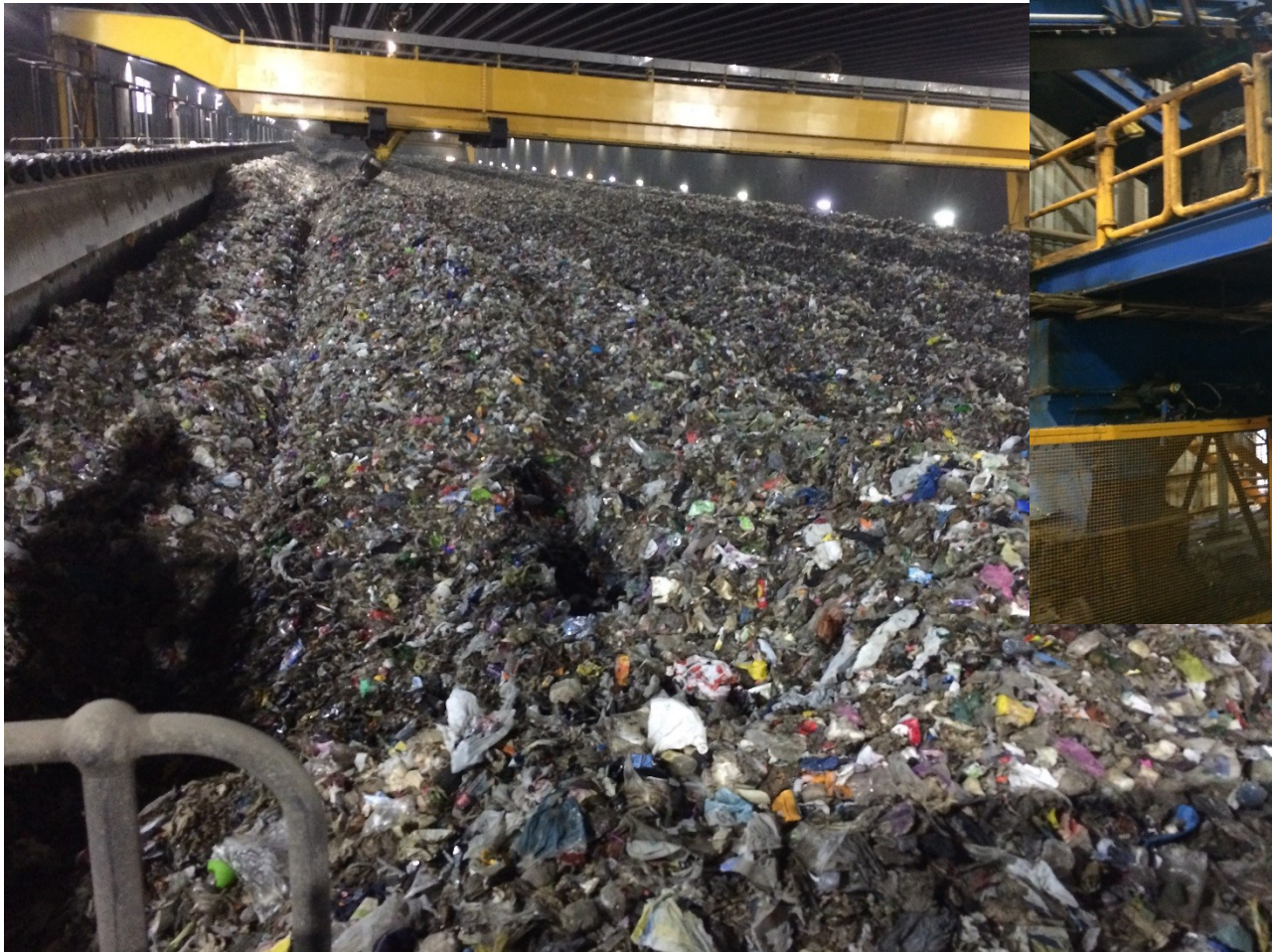
Mechanical Biological Treatment (MBT)



Company 1 Technology

council@shoalhaven.nsw.gov.au | www.shoalhaven.nsw.gov.au

Composting hall – continual turning



Final finishing and polishing of organics



**Odour Control –
biological filter**



Company 1 Outputs

council@shoalhaven.nsw.gov.au | www.shoalhaven.nsw.gov.au

Aluminium Cans



Steel Bales



**Part of the polishing process
(still contains plastic fragments)**



Final product before maturation

Company 2 Technology

council@shoalhaven.nsw.gov.au | www.shoalhaven.nsw.gov.au

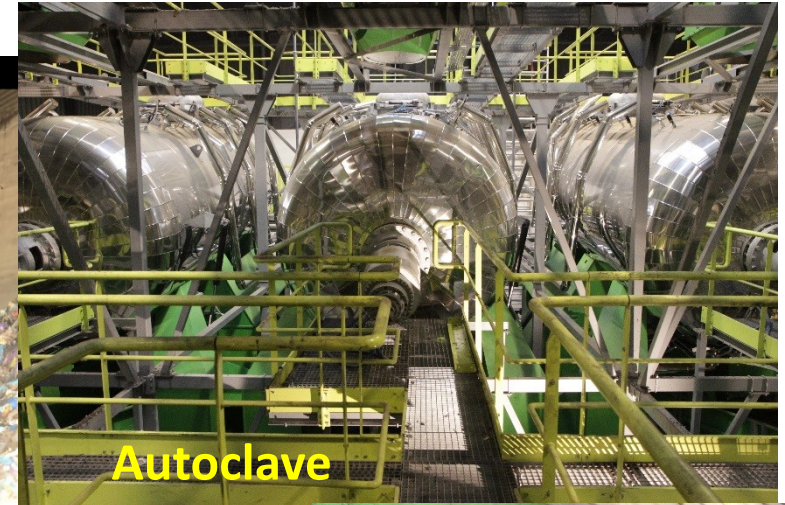
Mechanical Heat Treatment (MHT)



Incoming Waste



Reception Hall



Autoclave



Lightly
Shredded waste
conveyed to
Autoclave



Waste discharged
from Autoclave

Inside the Autoclave



Company 2 Technology

council@shoalhaven.nsw.gov.au | www.shoalhaven.nsw.gov.au

**Gas Storage Area –
for firing Autoclave**



Maze of conveyors and sorters



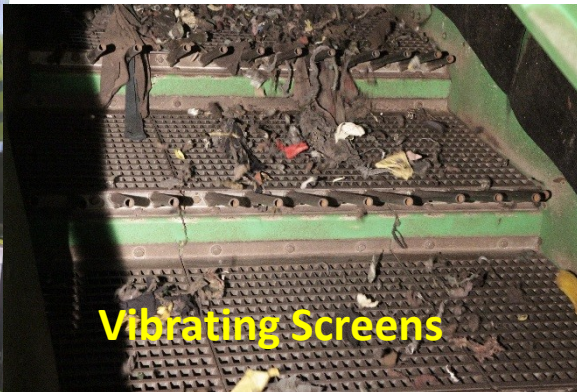
**Optical
Sorter**



Control Centre



Vibrating Screens



Wobble Belt



Company 2 Outputs

council@shoalhaven.nsw.gov.au | www.shoalhaven.nsw.gov.au



Glass cullet

A large pile of broken glass pieces in various colors (clear, green, brown) and sizes, representing the glass cullet output.



PET

A large pile of crushed plastic bottles and containers, primarily in shades of brown and blue, representing the PET output.



Biomass product

A large pile of dark brown, fibrous material, likely the biomass product output.



Aluminium

A large pile of crushed metal pieces, primarily in shades of grey and silver, representing the aluminium output.



RDF

A large pile of dark, irregularly shaped material, likely the RDF (Refuse Derived Fuel) output.



Steel

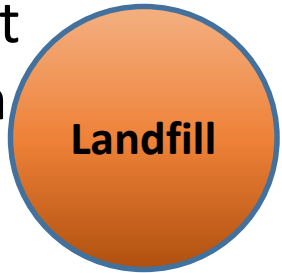
A large pile of dark, irregularly shaped metal pieces, likely the steel output.

Provider Claims

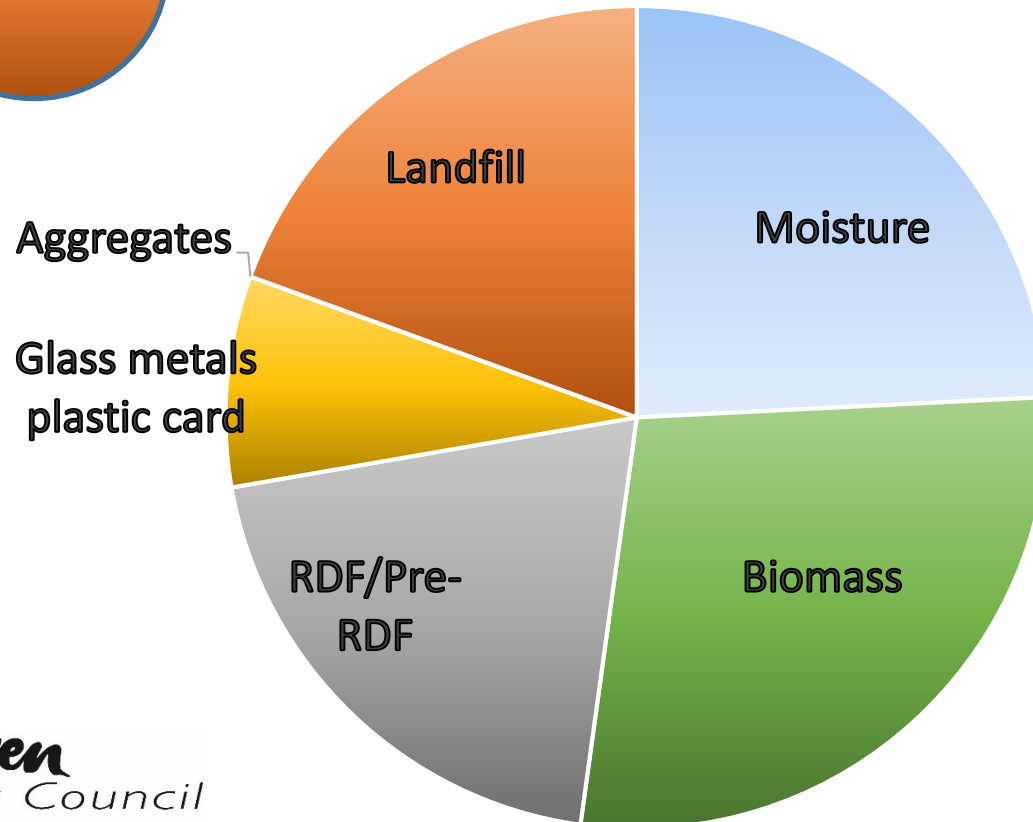
Composition Of Outputs

council@shoalhaven.nsw.gov.au | www.shoalhaven.nsw.gov.au

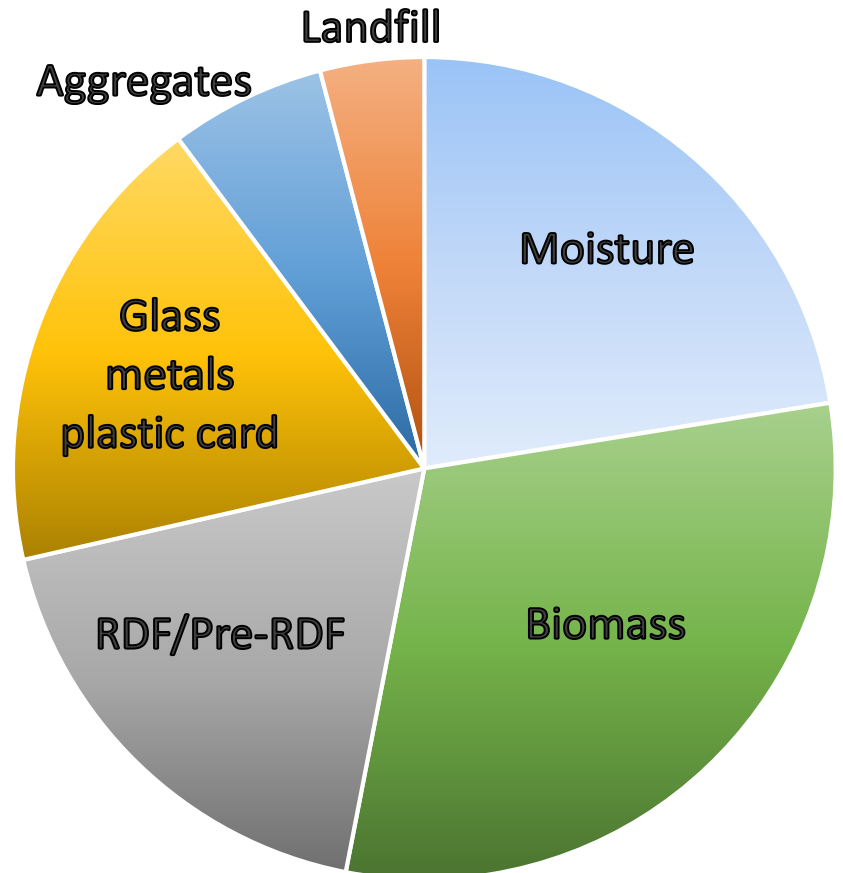
Current
System



Company 1

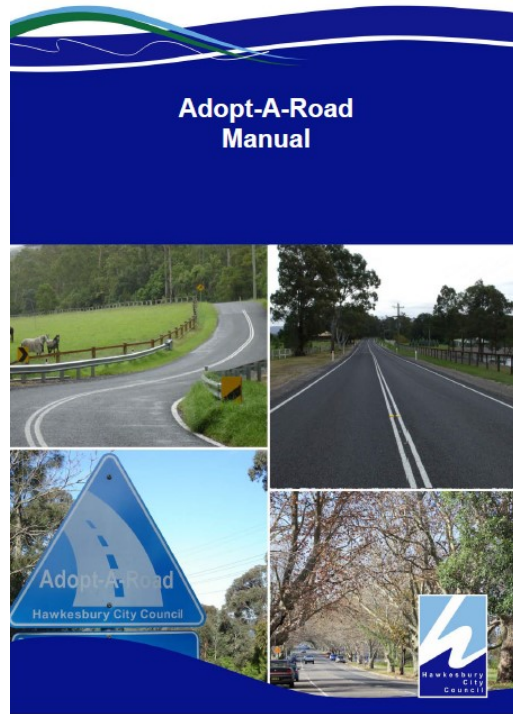


Company 2



Adopt – A – Road Programme

council@shoalhaven.nsw.gov.au | www.shoalhaven.nsw.gov.au



FACT SHEET

– Adopt A Road Program

(02) 4677 1100
wollondilly.nsw.gov.au

 **Wollondilly**
Shire Council



- Council is responsible for the maintenance of sealed and unsealed roads within the local government area.
- The Adopt A Road programme is a programme that has evolved in other NSW Councils to allow community groups to play an active role in the appearance of particular roads.
- Council does not have a routine programme (and budget) to clean up this litter on a regular basis.
- The Adopt A Road programme could be a great opportunity to empower community groups to improve the amenity of village entrance roads and other such “entrances” by collecting litter on a routine basis.

If local communities were to “Adopt a Road” and initially focus on litter collection the benefits would include:

- The cost effective reduction of litter “hot spots”.
- Increased awareness of the effects of littering.
- Improved attractiveness of the Shoalhaven’s local roads.
- A sense of local pride and accomplishment for the community.

Council resolution MIN18.817

Resolved that Council give in principle support to the creation of an Adopt a Road Programme and that the General Manager (Director Assets and Works) develop a manual to cover the activities of community groups and consult with the CCBs to develop a budget consideration for the 2019/2020 financial year.

- An “Adopt a Road” programme requires Council to provide;
 - A Workplace Health and Safety (WHS) manual,
 - And basic tools and consumables that would be required by the community groups.
- The take up of such a programme is hard to estimate; however, an allocation from Council of \$6,000 a year is likely.
- Some well established “Adopt a Road” programmes have attracted other funding (in return for promotional signage) from local business, for beautification works.



Council would like to engage with the local Community Consultative Bodies (CCBs) to determine the support for implementing an “Adopt A Road” programme across various areas.

Each group would be required to;

- Complete the WHS Online Volunteer Induction.
- Comply with the workplace procedures within the WHS manual.
- Maintain a register of volunteers.
- Arrange and conduct activities along the adopted road in consultation with Council.

Where to from here?

- This presentation will be distributed to the CCB's for their consideration.
- If the CCBs are keen to participate they should advise Council of their interest.
- If there is interest a Council representative can meet with the CCB's to discuss their involvement.
- Council will consider the CCB feedback and determine if the “Adopt a Road” programme can proceed (even as a trial in a particular area) and adopt the funds necessary to resource the programme.
- If the CCB's are in support of the programme, Council will then proceed with the necessary requirements to produce and formalise manuals, procedures and other safe work practices for volunteers.



Tree Management Policy

council@shoalhaven.nsw.gov.au | www.shoalhaven.nsw.gov.au

How staff apply Council's Tree Management Policy – Public Land

Tree Management Policy on website

council@shoalhaven.nsw.gov.au | www.shoalhaven.nsw.gov.au

Contact Us
☎ (02) 4429 3111
✉ council@shoalhaven.nsw.gov.au
[View All Contact Details >](#)

Meetings & Agendas
View all agendas and minutes for Council and Committee meetings.
[Agendas & Minutes >](#)

Newsletter Signup
Signup for our In Your Neighbourhood newsletter and get news direct to your inbox!
[Signup Now >](#)

About Us
[A - Z Page Index](#)
[Business Plan](#)
[Careers at Council](#)
[Community Engagement](#)
[Policies and Plans](#)
[Public Information](#)
[Community Strategic Plan](#)
[Annual Report](#)
[Our Councillors](#)
[Reporting a Problem](#)

Services
[Aged / Seniors Services](#)
[Arts](#)
[Cemeteries](#)
[Children's Services](#)
[Community Directory](#)
[Disability Services](#)
[Economic Development](#)
[Library](#)
[Entertainment](#)

Information
[Pets and Animal Management](#)
[Pools and Aquatic Centres](#)
[Parks](#)
[Rates](#)
[Sports](#)
[Community Facilities](#)
[Volunteering](#)
[Waste Management](#)
[Roads](#)
[Government Information Act](#)

Planning & Building
[DA Applications](#)
[DA Tracking](#)
[Development](#)
[Development Control Plan](#)
[Development Forms](#)
[Maps Online](#)
[Planning Register](#)
[Shoalhaven LEP](#)
[Swimming Pools](#)
[Contributions Plan](#)



Tree Management Policy - Public Land

You are here: [My Council](#) / [Public Information](#)

About Council
Integrated Strategic Plan
News
Careers at Council
Community Engagement
Council Services

Public information
There is a wide range of Council information available to you in this website. The most commonly requested information includes:

- Minutes and agendas of Council and committee meetings
- Capital Works
- Development application tracking information
- Community strategic plan - including budget, plans and progress
- Policy documents - all Council's public policies
- Public exhibition - documents and development applications open for comment
- Tenders - open tenders and details of recently awarded or closed tenders

Your rights
Legislation governs your rights to Council information. Refer to the [Government Information \(Public Access\) Act](#) page for more detail.

Can't find it?

Town Street Tree Planting Strategy	12746
Tree Management Policy - Public Land	285
Tree Planting - School Grounds	79
Voluntary Planning Agreements	130

Policy Number: POL16/10
Adopted: 6 March 2015
Amended: 17/04/2018
Minute Number: D14/328051, D14/331530
File: 7378E
Produced By: Assets & Works Group
Review Date: 1/12/2020



For more information contact the Assets & Works Group

Tree Management Policy - Purpose

council@shoalhaven.nsw.gov.au | www.shoalhaven.nsw.gov.au

- SCC recognises the value of trees for the provision of visual amenity, shade, fauna habitat, soil stability, erosion protection etc and places a high importance on the protection and retention of trees. SCC recognises the need to remove or prune trees where circumstances warrant such actions eg protection of life and property.

The purpose of the Policy therefore are to:

- Provide a consistent framework to respond to requests for tree removal/management by members of the public
- Provide an environmental approvals framework
- Provide a stream-lined environmental approvals procedure in specified circumstances (ie unlikely to have an environmental impact).

Tree Management Policy - Statement

council@shoalhaven.nsw.gov.au | www.shoalhaven.nsw.gov.au

- This Policy applies to all land SCC owns and/or manages including:
 - Road reserves of which SCC is the roads Authority
 - Crown reserves of which SCC is the Manager

Primary reasons for requests to remove trees

council@shoalhaven.nsw.gov.au | www.shoalhaven.nsw.gov.au

- Perceived risk to homes/buildings, life and property damage
- Obstruction to vehicle sight lines
- Solar access issues
- Bushfire concerns
- Dropping of tree debris or branches
- Nuisance issues eg leaf, fruit and minor branch drop
- Tree root invasion to private infrastructure

Tree inspection process

council@shoalhaven.nsw.gov.au | www.shoalhaven.nsw.gov.au

- Council employ two permanent Tree Inspectors
- Trees on public land are assessed using risk management principles
- Trees assessed as low risk – no work undertaken (if applicant not satisfied senior management review)
- Trees assessed as medium to high risk – tree work at Council expense
- Council's Arboriculture team consists of two full time staff and a Trainee
- Council also utilise Contractors
- Budget for tree management in road reserves is \$830,000
- Budget for tree management in reserves is \$470,000

Process continued

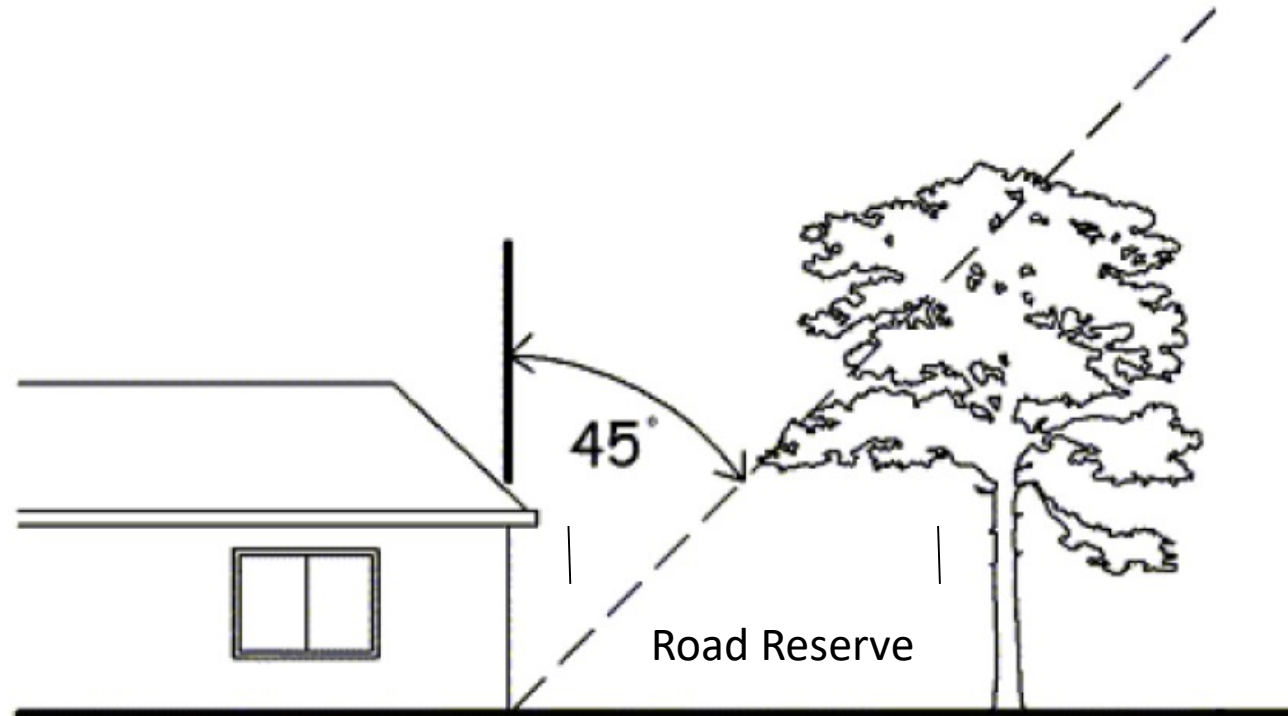
council@shoalhaven.nsw.gov.au | www.shoalhaven.nsw.gov.au

- Where Council considers the tree is low risk and senior management's review endorses that assessment, the 45 degree rule applies in the road reserve.

45 Degree Rule

council@shoalhaven.nsw.gov.au | www.shoalhaven.nsw.gov.au

- Tree works where any part of a tree is above a line 45° from the vertical extension of the wall of any building measured from its base ☐



45 Degree Rule - Process

council@shoalhaven.nsw.gov.au | www.shoalhaven.nsw.gov.au

4.7. 45 degree rule

In situations where the applicant does not agree with the conclusions of Council's assessment (*i.e.* for retention) and the tree is located on a Council road reserve within 45 degrees of a habitable dwelling owned by the applicant, the applicant will be given the option of preparing an environmental assessment (refer to Section 4.8) and accompanying supporting documentation (*e.g.* arborist report, applicant's medical certificate) at their own expense. If the environmental assessment allows for the tree works, the applicant can apply to SCC to have the tree works undertaken at the applicant's expense.

Removal and replacement – 45 Degree Rule – Applicant's expense

council@shoalhaven.nsw.gov.au | www.shoalhaven.nsw.gov.au

