

**Carmel Krogh**

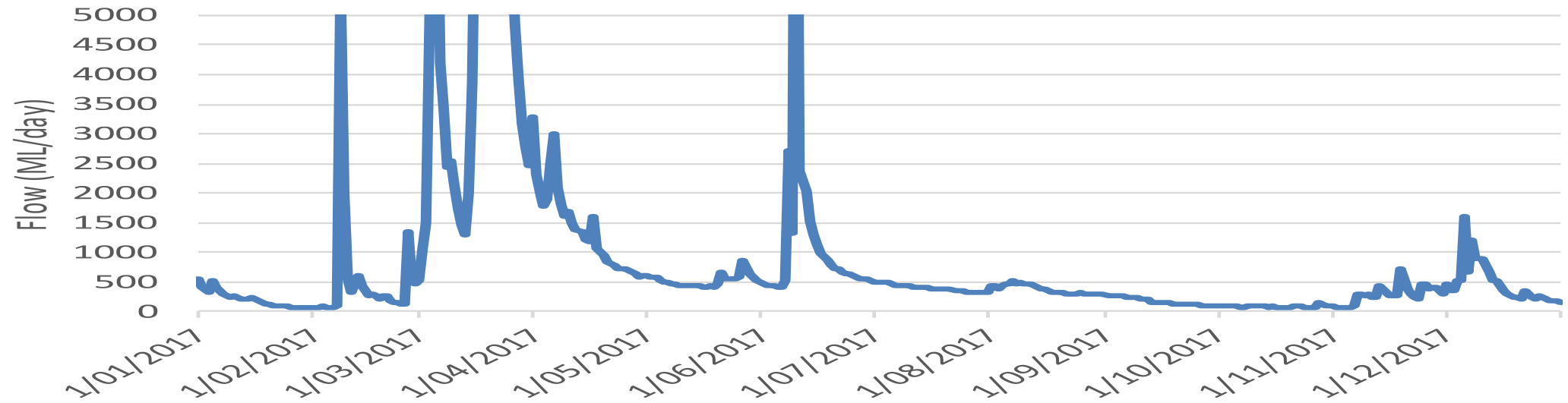
**Director Shoalhaven Water**

# Water Supply Update

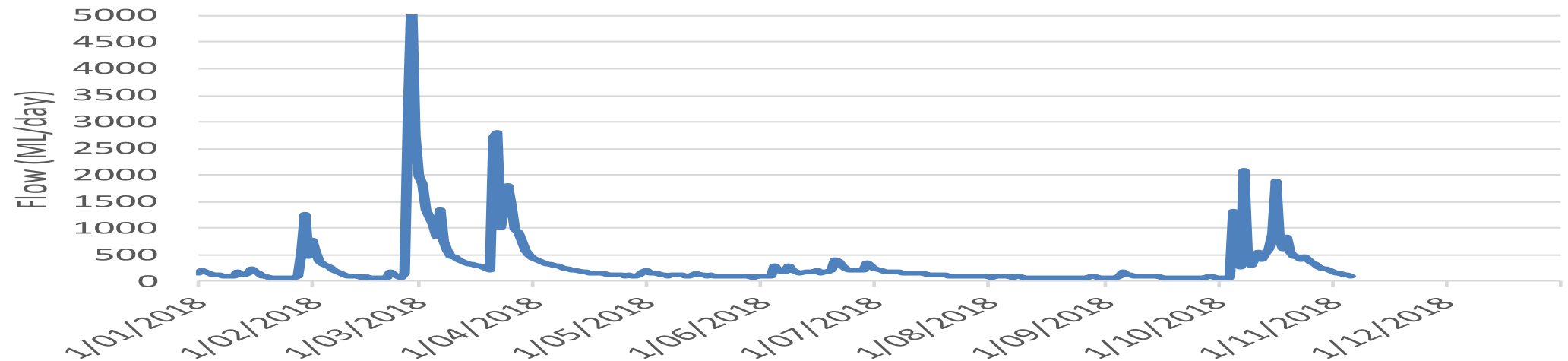
- Level 1 Water Restrictions commenced 3<sup>rd</sup> September 2018
- November 2018 :
  - Bamarang Dam 100%
  - Danjera Dam 58%
  - Porters Creek Dam 45%

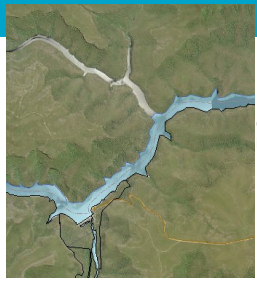


## Inflows to Tallowa 2017




## Inflows to Tallowa 2018





Kangaroo and  
Shoalhaven Rivers

 >90 ML/day



Tallowa Dam  
90,000 ML

## How the drought management plan works:



Shoalhaven River  
(Burrier)

“NORMAL”  
(NON –  
DROUGHT)



Bamarang Dam  
3,800 ML

Northern  
Supply

Southern  
Supply

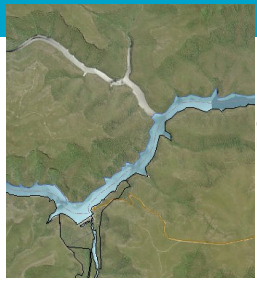


Porters Creek Dam  
1,900 ML



Danjera Dam  
7,600 ML





Kangaroo and  
Shoalhaven Rivers

## How the drought management plan works:

<90 ML/day



Tallowa Dam  
90,000 ML

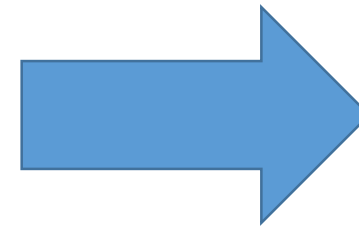


Shoalhaven River  
(Burrier)

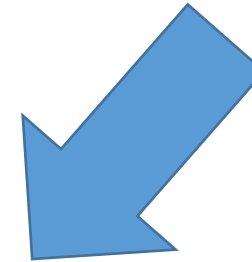
LEVEL 1 -  
CURRENT



Danjera Dam  
7,600 ML  
1<sup>st</sup> release



Bamarang Dam  
3,800 ML



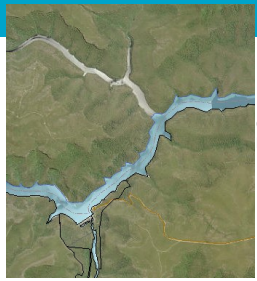
Northern  
Supply



Southern  
Supply



Porters Creek Dam  
1,900 ML



Kangaroo and  
Shoalhaven Rivers

## How the drought management plan works:

<90 ML/day



Tallowa Dam  
90,000 ML

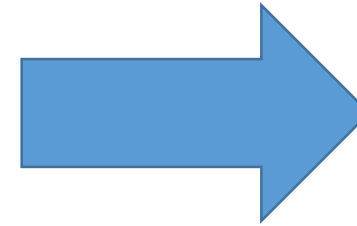


Shoalhaven River  
(Burrier)

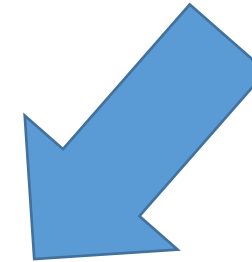
LEVEL 2



Danjera Dam  
7,600 ML  
2<sup>nd</sup> release



Bamarang Dam  
3,800 ML



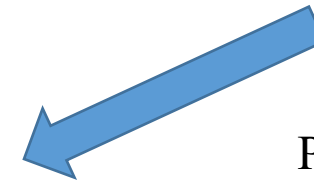
Northern  
Supply



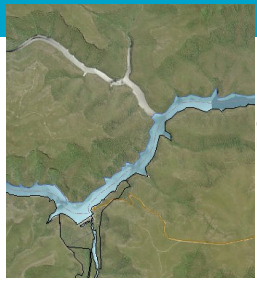
Southern  
Supply



Porters Creek Dam  
1,900 ML







# Kangaroo and Shoalhaven Rivers

## How the drought management plan works:

<90 ML/day



Tallowa Dam  
90,000 ML



Shoalhaven River  
(Burrier)

LEVEL 3



Danjera Dam  
20%



Bamarang Dam  
3,800 ML

Northern  
Supply



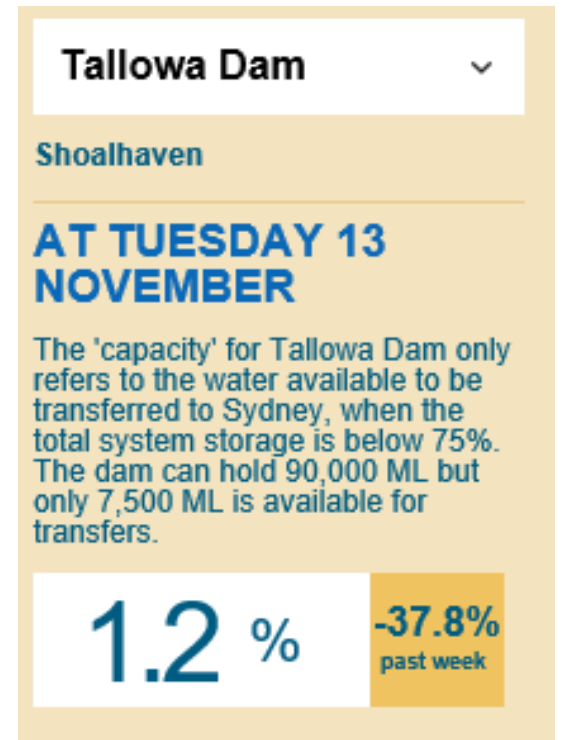
Southern  
Supply



Porters Creek Dam  
1,900 ML

# Water Transfers to Sydney - ???

- Tallowa dam – owned and operated by WaterNSW (state government)
- Restrictions on any transfers to Sydney under Metro Water Plan
- Tallowa dam
  - 1 metre from FSL



## DAM AND RAINFALL LEVELS

### LATEST TOTAL STORAGE AND SUPPLY INFO - ALL DAMS

**61.4 %**

Tuesday 13 November

▼ -0.5  
Change in past week

Latest volume  
1,584,115 ML  
Capacity  
2,581,850 ML

Total water supply for past week  
11,123 ML  
Average daily supply  
1,589 ML  
Net weekly storage change  
-13,637 ML

Daily dam levels are based on automated data which has not been verified.

[See recent verified weekly storage reports](#)



## REMS 1B STATUS

- 88% complete by value
- Payments to date total \$99,499,242







Nowra  
July  
2017



Nowra  
September  
2018





Bomaderry July 2017





Bomaderry September 2018













