

Your guide to the
Safe Disposal of
Asbestos



Asbestos Disposal Facilities Available at
West Nowra Recycling & Waste Depot



WARNING **Before your DIY Renovation**

If your house was built or renovated before the mid-1980s, it is likely to contain asbestos building materials. Australians have suffered severe health consequences from asbestos exposure which occurred during home renovations.



Health risks associated with asbestos exposure

Asbestos fibres are hazardous when inhaled. They can be released into the air when asbestos products are incorrectly handled, removed or transported for disposal.

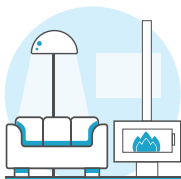
Breathing in asbestos fibres can cause asbestosis, lung cancer and mesothelioma. The risk of contracting these diseases increases with the number of fibres inhaled and people who contract health problems have usually been exposed to high levels of asbestos for a long time. The symptoms of these diseases do not usually appear until about 20 to 30 years after the first exposure to asbestos.

Where asbestos may be found in the home



Bathroom, Toilet & Laundry

- Asbestos cement sheet walls, ceiling and floors
- Backing to wall tiles



Living areas

- Insulation in wood heaters
- Asbestos cement sheeting in walls, ceiling and beneath wood-heater hearths



Kitchen

- Walls
- Splashbacks
- Ceilings
- In vinyl floor tiles
- Backing of vinyl sheet flooring
- Underlay sheeting for ceramic tiles



Exterior

Flat, patterned and corrugated wall and roof sheeting for

- Guttering
- Ridge capping
- Imitation brick cladding
- Lining under eaves



Backyard

- Fences
- Garden sheds
- Garages
- Outside toilets
- Carports
- Dog kennels
- Buried and dumped waste materials

Roof Cavity

- Loose fill insulation (not common)

For a comprehensive list of asbestos in your home visit
www.asbestosawareness.com.au

The two types of asbestos



FRIABLE ASBESTOS MATERIAL

Any material that contains asbestos and is in the form of a powder or can be crumbled, pulverised or reduced to a powder by hand pressure when dry.

This must be removed by an asbestos removal contractor with a friable asbestos licence.



Friable asbestos can be found in old domestic heaters, stoves, hot water systems, hot water pipe lagging, ceiling insulation products and back of vinyl and linoleum floor coverings.



BONDED ASBESTOS MATERIAL (non-friable)

Material that contains asbestos that **CAN NOT** be crumbled, pulverised or reduced to a powder by hand pressure when dry.

Bonded asbestos is quite stable but do not penetrate it by drilling, sanding, cutting etc. This can release dangerous airborne fibres.

In NSW, as long as you take the appropriate safety precautions, you are permitted to remove a maximum of 10 square metres of **bonded asbestos**. **More than that 10 square metres, you MUST either hire a qualified asbestos removalist or obtain a NSW SafeWork bonded asbestos removal licence.**

Handling and Storage

Once **bonded asbestos** products have been safely removed, you must use the following approaches during handling and storage to minimise the release of dust and fibres.

- ✓ Wet the asbestos waste and keep it damp to prevent dust – but don't use too much water and ensure water does not run into drains.
- ✓ Keep the waste covered always so that no dust is created – wrap it in heavy duty plastic. The current SafeWork NSW guidelines for wrapping still apply (double wrap in 200µm plastic), or if you can use an alternative certified asbestos disposal bag. Secure with tape.
- ✓ Separate the asbestos waste and store it apart from other types of waste.
- ✓ Store the waste securely to prevent unauthorised access to it.
- ✓ Remove the waste from the site as soon as possible.

If using a skip bin to store your asbestos waste:

- ✓ Ensure the skip bin is fully lined with heavy duty plastic before placing asbestos waste in it.
- ✓ Keep the waste damp and don't overfill the skip.
- ✓ Cover and secure the contents when full.
- ✗ Don't break asbestos into smaller pieces to make it fit into skip bins. Broken pieces of asbestos can generate dust and fibres.
- ✗ Don't MIX asbestos with your **general building waste** in your skip bin. It will not be accepted by the Depot.



Safely Disposing of Asbestos Waste

West Nowra Recycling and Waste Depot is the only landfill facility in the Shoalhaven for disposing asbestos.

The **Ulladulla Asbestos Waste Transfer Bin**, (located at the Ulladulla depot) is for the manual handling of wrapped and sealed asbestos waste packages only.

All bookings must be arranged 24 hours before the intended disposal time.

Call 4429 3111

Monday to Friday, 8.30am - 4.30pm

Asbestos material will be permitted subject to the following –

Asbestos materials weighing less than 100kg – must be presented for disposal in small manageable packages and be able to be lifted and unloaded by hand. The current SafeWork NSW guidelines for wrapping still apply (wet and double wrapping in 200µm thick builder's plastic), or you can use an alternate certified asbestos disposal bag.

Asbestos materials weighing more than 100kg and or over 10m².

- Waste transporter **must** register with **EPA WasteLocate** – www.wastelocate.epa.nsw.gov.au
- The EPA WasteLocate consignment barcode must be scanned at the weighbridge. →
- Asbestos materials **must** be presented for disposal in bags certified and approved by a NATA



accredited testing facility for approval of the transport and containment of "Packing Group III" Solid Dangerous Goods (i.e. Asbestos).

Asbestos materials weighing more than 100kg AND deemed to be unsuitable for bags – must be managed in accordance with EPA and SafeWork NSW guidelines. Customers must gain approval prior to booking the load as to the safety of the proposed packaging and the disposal unloading method (i.e. manual, tipping or crane).

Waste transporter must register with

WasteLocate – www.wastelocate.epa.nsw.gov.au



For more advice on preparing your waste for disposal visit www.safework.nsw.gov.au

Safely transporting asbestos waste - less than 100kg

You don't need a licence to transport bonded asbestos waste. However, you must use the following practices when transporting it:

- ✓ Ensure the waste has been wetted and sealed in heavy duty plastic (double wrapped in 200µm plastic) prior to loading
- ✓ Bonded asbestos must be transported in a condition (wet and wrapped) so that the wrapping is unable to break or tear.

Illegal dumping of asbestos can have a serious impact to public health and contamination of our environment.

Illegal dumping of asbestos can incur fines of up to \$500,000 for individuals and \$2 Million for corporations.

If you discover or witness illegally dumped asbestos please contact the RiD Hotline on 131 555.



This brochure outlines the basic safety procedures for identifying, handling and disposing of asbestos but we strongly advise you seek further information by visiting the following government authorities

SafeWork NSW

www.safework.nsw.gov.au or

Environmental Protection Authority

www.epa.nsw.gov.au

Asbestos Disposal Facilities available at

West Nowra Recycling and Waste Depot

Limited Asbestos Disposal Facilities available at
Ulladulla Recycling & Waste Depot

Shoalhaven
City Council

Waste
Services

shoalhaven.nsw.gov.au    