

# Collingwood Beach Revegetation Project

*Increasing dune resilience by enhancing  
vegetation diversity*



# Project Background

- Council has received a [Coastal & Estuary Grant](#) to undertake dune restoration works at Collingwood Beach
- Collingwood Beach is identified as one of 10 beaches as being at **greater risk of coastal erosion** [Advisian, 2016](#).
- **[CZMP](#) Action LA3.20:**  
*"Implement a two-year trial at two sites on CZMP LA3.20. Any vegetation action plan **must reduce the likelihood of erosion** (Advisian 2018)."*
- This grant follows on from two-year trial that confirmed the **importance of vegetation species diversity** to maintain dune resilience.



Collingwood Beach dune cleared of vegetation for development circa 1960

# Project Aims

1. Protect & stabilise dunes by increasing resilience to erosion
2. Reduce risk to public & private assets
3. Improve & increase vegetation & species diversity
4. Discourage feral pests with fencing
5. Achieve a balance between views & nature
6. Discourage tree vandalism



Collingwood Beach tree vandalism 2018

# Diverse dunes are resilient to erosion

- Dune Vegetation:
  - Protects the coast from erosion
  - Prevents weed invasion
  - Provides habitat for wildlife
- Dune vegetation traps sand and helps build dune height
- This height helps protect public and private assets behind the dune.



A natural dune system, to the north of Collingwood Beach, Jervis Bay

# Scope of project works

- Fencing
- Revegetation
- Amenity improvement
  - Bench seats
  - Educational signage
  - Some pruning of trees for public safety



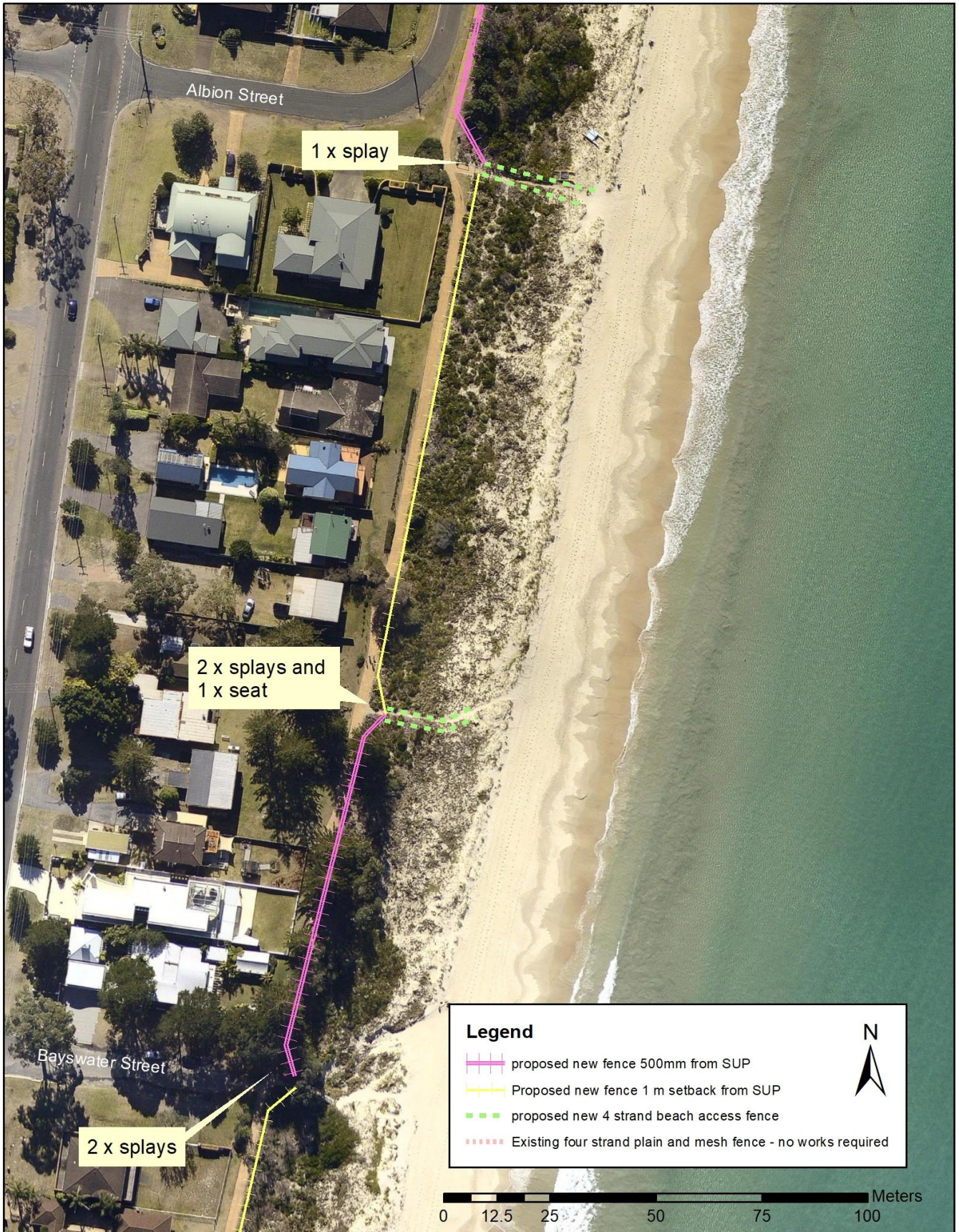
# Scope of works - Fencing

- 0.5-1.0m from bike path to adhere to Australian Standards
- Additional fencing along beach access paths
- From Susan St to Albion St
- Additional fencing Illfracombe St (pending budget allowances)



# Fencing area

Proposed new fencing  
Albion to Bayswater



# Fencing area - continued

Proposed new fencing  
Bayswater to Berry





# Fencing area - continued

Proposed new fencing  
Berry to Montague



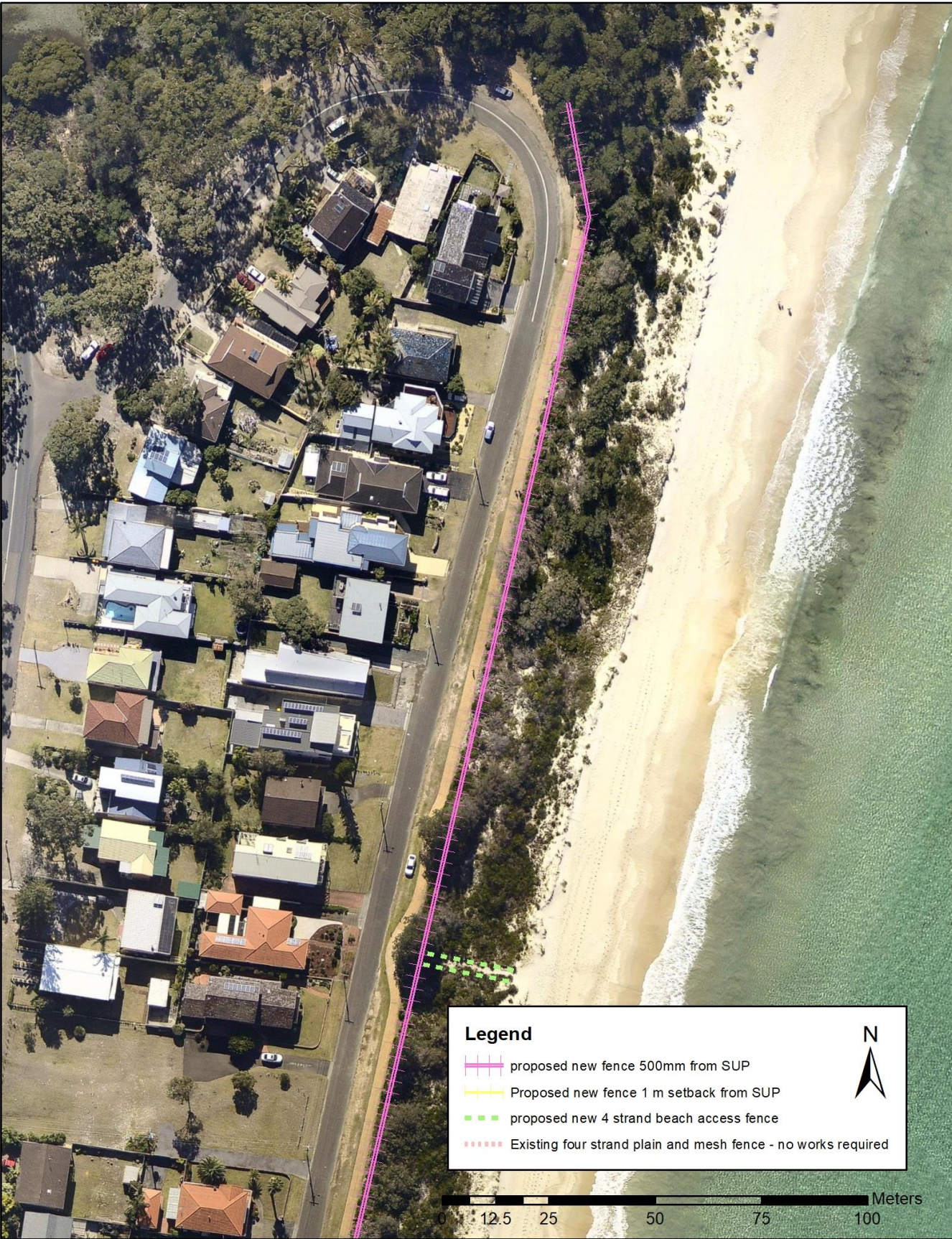
# Fencing area - continued

Proposed new fencing  
Montague to Susan



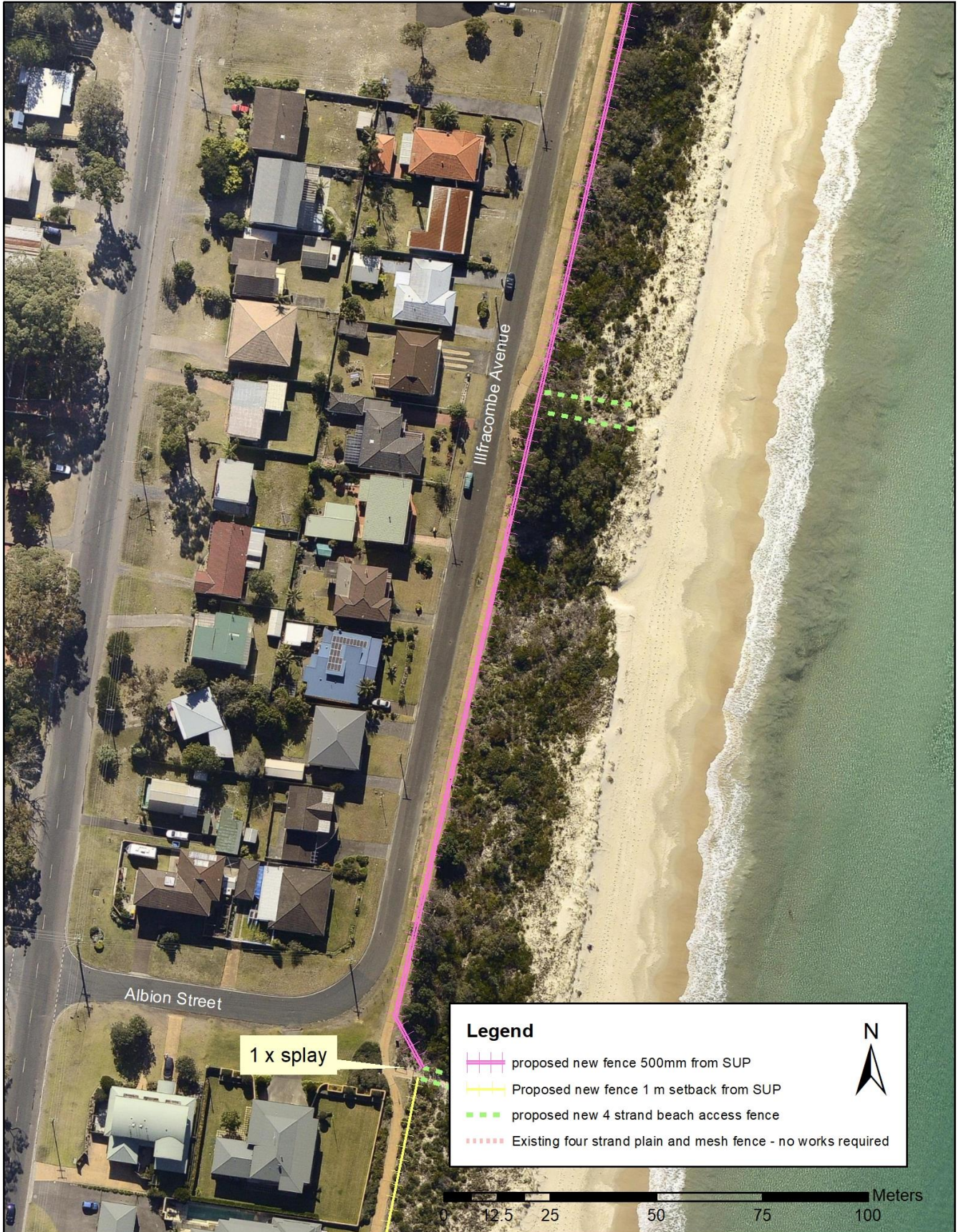
# Fencing area (pending budget)

Proposed new fencing  
Illfracombe - northern end



# Fencing area (pending budget)

Proposed new fencing  
Illfracombe - southern



# Scope of works - revegetation

- ~1250m<sup>2</sup> to be revegetated within the fenced area
- Native plant species list developed as part of Collingwood Beach 2-year trial in collaboration with community and DPIE

Maintaining a natural functional group ratio:

- **64%** groundcover (understory) good wind erosion protection
- **36%** shrubs (low "overstory") deep roots help protect against storm & wave erosion

# Shrub species list 0-2m height

Botanical name	Common name
<i>Acacia longifolia</i> var. <i>sophorae</i>	Coastal wattle
<i>Breynia oblongifolia</i>	Coffee bush
<i>Correa alba</i>	White correa
<i>Leucopogon parviflorus</i>	Coastal bearded heath
<i>Monotoca elliptica</i>	Tree broom-heath
<i>Pittosporum revolutum</i>	Rough fruit daphne
<i>Ricinocarpus pinifolius</i>	Wedding bush



# Ground covers

Botanical name	Common name	Botanical name	Common name
<i>Actites megalocarpa</i>	Coastal sowthistle	<i>Hibbertia scandens</i>	Golden guinea flower
<i>Austrofestuca littoralis</i>	Coastal fescue	<i>Imperata cylindrica var. major</i>	Blady grass
<i>Billardiera scandens</i>	Apple berry	<i>Ficinia nodosa</i>	Knobby Club Rush
<i>Carex longebrachiata</i>	Bergalia Tussock	<i>Kennedia rubicunda</i>	Dusky coral pea
<i>Carpobrotus glaucescens</i>	Pig Face	<i>Lepidosperma concavum</i>	Sandhill Sword-sedge
<i>Cassytha pubescens</i>	Devils twine	<i>Lomandra longifolia</i>	Spiny mat-rush
<i>Commelina cyanea</i>	Scurvy weed	<i>Marsdenia rostrata</i>	Milk vine
<i>Desmodium gunnii</i>	Slender tick trefoil	<i>Microlaena stipoides var. stipoides</i>	Weeping grass
<i>Dianella caerulea var. caerulea</i>	Blue Flax Lily	<i>Notelaea longifolia</i>	Long-leaved olive
<i>Dianella congesta</i>	Coastal flax lily	<i>Parsonsia straminea</i>	Common silkpod
<i>Dianella crinoides</i>	Flax lilies	<i>Pelargonium australe</i>	Coastal geranium
<i>Dichondra repens</i>	Kidney Weed	<i>Pratia purpurascens</i>	Whiteroot
<i>Entolasia marginata</i>	Panic grass	<i>Rhagodia candolleana</i>	Seaberry saltbush
<i>Ficinia nodosa</i>	Nodding rush	<i>Rubus parvifolius</i>	Native raspberry
<i>Geranium potentilloides</i>	Geranium	<i>Scaevola calendulacea</i>	Fan flower
<i>Glycine clandestina</i>	Love creeper	<i>Senecio lautus</i>	Coastal senecio
<i>Themeda australis</i>	Kangaroo grass	<i>Solanum pungetium</i>	Eastern nightshade
<i>Viola hederacea</i>	Violet	<i>Spinifex sericeus</i>	Spinifex
<i>Stephonia japonica</i>	Snake vine		



# Scope of works – Amenity

- 2 bench seats
- Vegetation maintenance and pruning – to adhere to Australian Standard for Bikepath accessway
- Vegetation signage



Example of Dune vegetation signage from Wollongong Council



# Tree Vandalism

- Council treats tree and vegetation [vandalism seriously](#)
- Vandalism of trees and vegetation can be a **serious criminal offence**
- [View Council's tree vandalism policy](#)
- Rangers regularly patrol the Collingwood Beach area



Tree vandalism at Collingwood Beach – October 2021