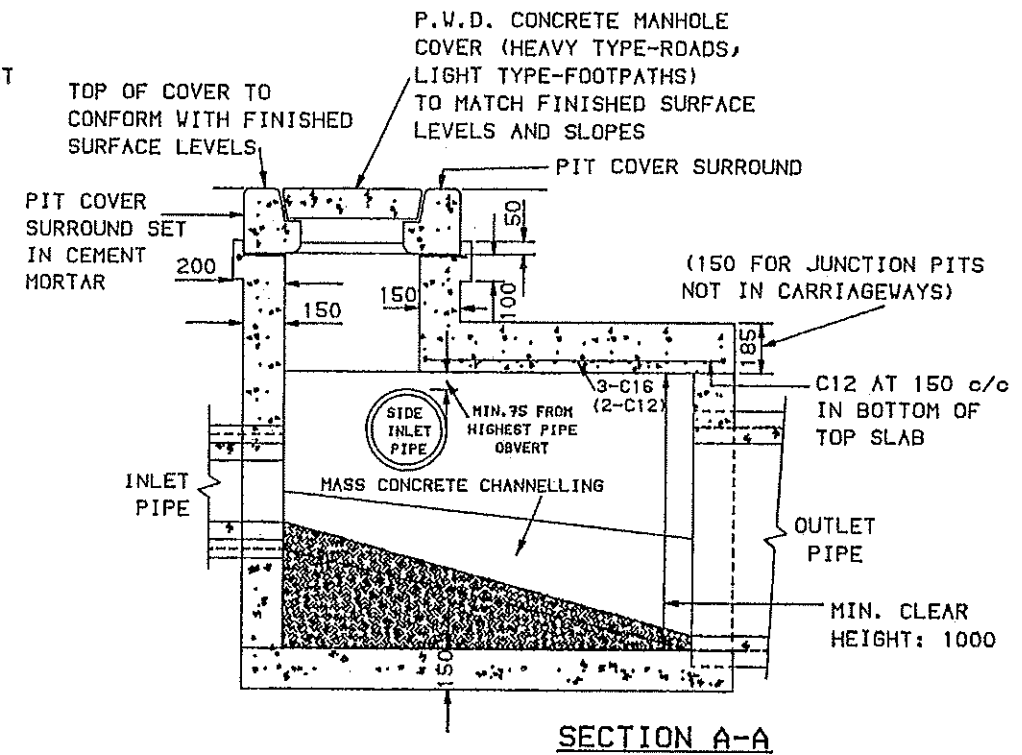


ELEVATION
PLAN
DETAIL OF CLIMB IRON

CLIMB IRON OF 20 GALVANISED STEEL MADE TO ABOVE SHAPE AND DIMENSIONS SHALL BE PROVIDED AT 950 c/c UNDER LID WHERE PIT IS DEEPER THAN 1200.

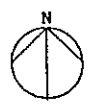
NOTES:

1. MAXIMUM OUTLET PIPE ON STRAIGHT 900 DIAMETRE.
2. MAXIMUM OUTLET PIPE ON SKEW 825 DIAMETRE.
3. MAXIMUM SIDE ENTRY PIPE 825 DIAMETRE AT APPROX. 40° SKEW
4. MINIMUM INTERNAL DIMENSIONS; LENGTH 900
WIDTH 700
HEIGHT 1000
5. CONCRETE TO BE OF 20 MP_a COMPRESSIVE STRENGTH (F_{cd}) AT 28 DAYS.
6. PIPE TRENCHES BACKFILLED WITH SAND SHALL HAVE 3 m OF SUBSOIL DRAIN PIPE IN THE BOTTOM OF THE TRENCH AND DRAINING INTO THE PIT.
7. FOURTY EIGHT (48) HOURS NOTICE IS TO BE GIVEN PRIOR TO THE PLACING OF CONCRETE TO ALLOW FOR INSPECTION BY COUNCIL'S OFFICER.
8. FOR STANDARD PITS IN LOCATIONS OTHER THAN CARRIAGEWAYS DIMENSIONS AND REINFORCING SHOWN IN BRACKETS APPLY.



SECTION A-A

Fig. D5. Misc. 6



SCALE 1: N.T.S.

SUBDIVISION
CODE

CITY OF SHOALHAVEN
STANDARD
JUNCTION PIT

ENGINEERING WORKS
MANAGER

DRAWN	C. FIEBELER
CHECKED	J. BLOH
PLAN REF.	263706
DATE	06 MAY 1986