
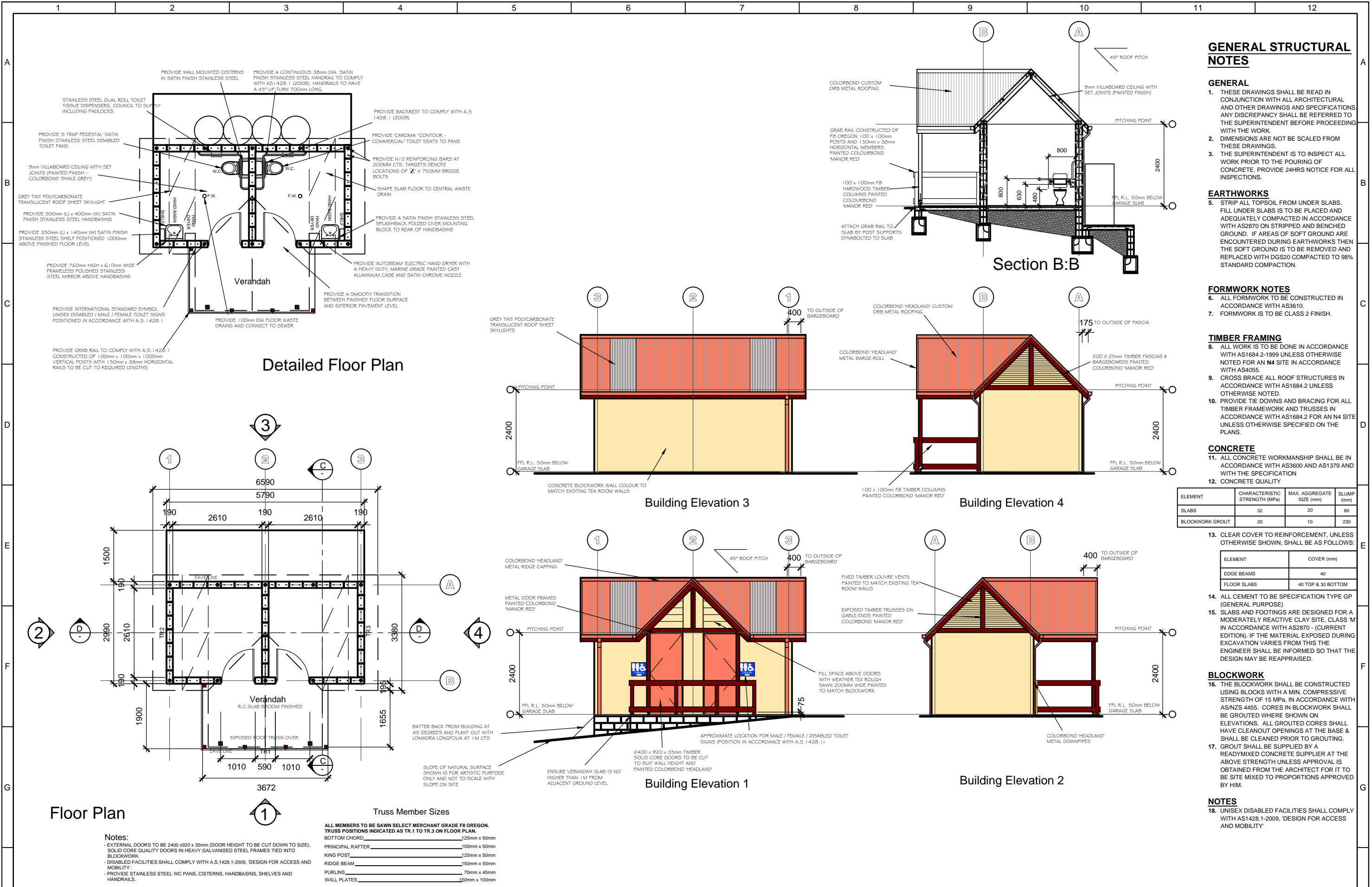


DESIGNED: R. Howes	28/10/11	SURVEYED: E. Verhuizen	AMENDMENTS		<h2 style="text-align: center;">CITY OF SHOALHAVEN</h2> <p style="text-align: center;">Beaumont Cambewarra Mountain Lookout General Arrangement</p>	<p>SCALE: 1:100 for A1 size plot, 1:200 for A3 size plot Do not scale off drawings. Confirm all dimensions on site prior to start of construction. NOTE: This drawing, design and the copyright therein are the property of Shoalhaven City Council. It has been produced by the City Services - Project Delivery Section and must not be used, reproduced or copied wholly or in part without the permission of the Project Delivery Manager.</p>	DIRECTOR CITY SERVICES & OPERATIONS: DATE:
DRAWN: R. Howes	16/01/12	FIELD BOOK:					Draft Copy Only
CHECKED:		ORIGIN OF LEVELS: STN 4416PM 109587					- PLAN REFERENCE -
APPROVED:		DATUM: AHD					2130_66
DRAWING FILE: 2130_61.dwg		CIVILCAD FILE:					



**GENERAL STRUCTURAL NOTES**

- GENERAL**
1. THESE DRAWINGS SHALL BE READ IN CONJUNCTION WITH ALL ARCHITECTURAL AND OTHER DRAWINGS AND SPECIFICATIONS. ANY DISCREPANCY SHALL BE REFERRED TO THE SUPERINTENDENT BEFORE PROCEEDING WITH THE WORK.
  2. DIMENSIONS ARE NOT BE SCALED FROM THESE DRAWINGS.
  3. THE SUPERINTENDENT IS TO INSPECT ALL WORK PRIOR TO THE POURING OF CONCRETE. PROVIDE 24HRS NOTICE FOR ALL INSPECTIONS.

- EARTHWORKS**
5. STRIP ALL TOPSOIL FROM UNDER SLABS. FILL UNDER SLABS IS TO BE PLACED AND ADEQUATELY COMPACTED IN ACCORDANCE WITH AS2870 ON STRIPPED AND BENCHED GROUND. IF AREAS OF SOFT GROUND ARE ENCOUNTERED DURING EARTHWORKS THEN THE SOFT GROUND IS TO BE REMOVED AND REPLACED WITH DGS20 COMPACTED TO 98% STANDARD COMPACTION.

- FORMWORK NOTES**
6. ALL FORMWORK TO BE CONSTRUCTED IN ACCORDANCE WITH AS3610.
  7. FORMWORK IS TO BE CLASS 2 FINISH.

- TIMBER FRAMING**
8. ALL WORK IS TO BE DONE IN ACCORDANCE WITH AS1684.2-1999 UNLESS OTHERWISE NOTED FOR AN N4 SITE IN ACCORDANCE WITH AS4055.
  9. CROSS BRACE ALL ROOF STRUCTURES IN ACCORDANCE WITH AS1684.2 UNLESS OTHERWISE NOTED.
  10. PROVIDE TIE DOWNS AND BRACING FOR ALL TIMBER FRAMEWORK AND TRUSSES IN ACCORDANCE WITH AS1684.2 FOR AN N4 SITE UNLESS OTHERWISE SPECIFIED ON THE PLANS.

- CONCRETE**
11. ALL CONCRETE WORKMANSHIP SHALL BE IN ACCORDANCE WITH AS3600 AND AS1379 AND WITH THE SPECIFICATION
  12. CONCRETE QUALITY

ELEMENT	CHARACTERISTIC STRENGTH (MPa)	MAX. AGGREGATE SIZE (mm)	SUMP (mm)
SLABS	32	20	80
BLOCKWORK GROUT	20	10	230

ELEMENT	COVER (mm)
EDGE BEAMS	40
FLOOR SLABS	40 TOP & 30 BOTTOM


13. CLEAR COVER TO REINFORCEMENT, UNLESS OTHERWISE SHOWN, SHALL BE AS FOLLOWS:
14. ALL CEMENT TO BE SPECIFICATION TYPE GP (GENERAL PURPOSE)
15. SLABS AND FOOTINGS ARE DESIGNED FOR A MODERATELY REACTIVE CLAY SITE. CLASS M IN ACCORDANCE WITH AS2870 - (CURRENT EDITION). IF THE MATERIAL EXPOSED DURING EXCAVATION VARIES FROM THIS THE ENGINEER SHALL BE INFORMED SO THAT THE DESIGN MAY BE REAPPRAISED.

- BLOCKWORK**
16. THE BLOCKWORK SHALL BE CONSTRUCTED USING BLOCKS WITH A MIN. COMPRESSIVE STRENGTH OF 15 MPa, IN ACCORDANCE WITH AS/NZS 4455. CORES IN BLOCKWORK SHALL BE GROUTED WHERE SHOWN ON ELEVATIONS. ALL GROUTED CORES SHALL HAVE CLEANOUT OPENINGS AT THE BASE & SHALL BE CLEANED PRIOR TO GROUTING. GROUT SHALL BE SUPPLIED BY A READY-MIXED CONCRETE SUPPLIER AT THE ABOVE STRENGTH UNLESS APPROVAL IS OBTAINED FROM THE ARCHITECT FOR IT TO BE SITE MIXED TO PROPORTIONS APPROVED BY HIM.

- NOTES**
18. UNISEX DISABLED FACILITIES SHALL COMPLY WITH AS1428.1-2009, 'DESIGN FOR ACCESS AND MOBILITY'

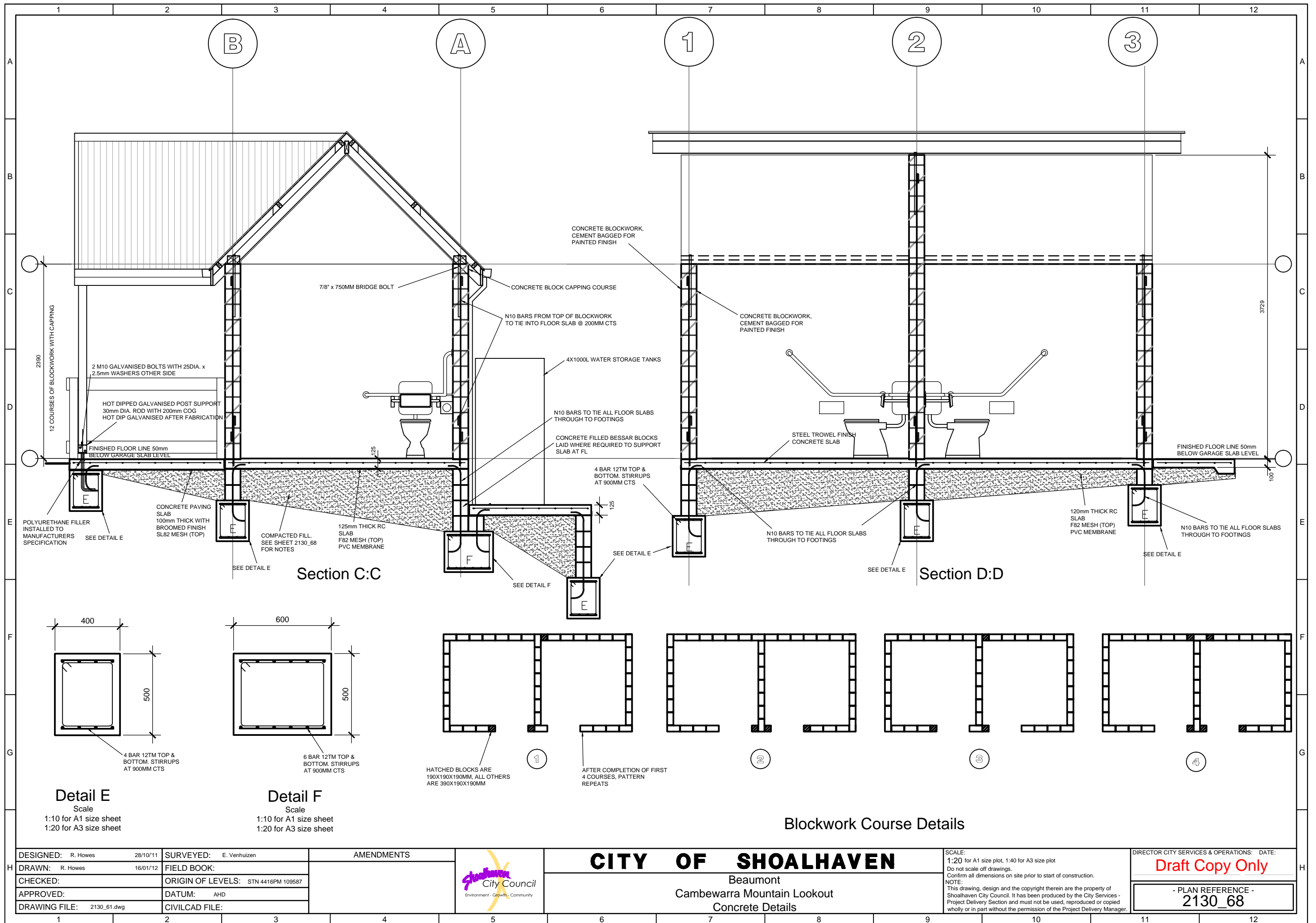
DESIGNED: R. Howes	28/10/11	SURVEYED: E. Verhuizen
DRAWN: R. Howes	16/01/12	FIELD BOOK:
CHECKED:		ORIGIN OF LEVELS: STN 4416PM 109587
APPROVED:		DATUM: AHD
DRAWING FILE: 2130_61.dwg		CIVILCAD FILE:

AMENDMENTS	


  
**CITY OF SHOALHAVEN**  
 Beaumont  
 Cambewarra Mountain Lookout  
 Amenities Building Details And Notes

SCALE:  
 1:50 for A1 size plot, 1:100 for A3 size plot  
 Do not scale off drawings.  
 Confirm all dimensions on site prior to start of construction.  
 NOTE:  
 This drawing, design and the copyright therein are the property of Shoalhaven City Council. It has been produced by the City Services - Project Delivery Section and must not be used, reproduced or copied wholly or in part without the permission of the Project Delivery Manager.

DIRECTOR CITY SERVICES & OPERATIONS: DATE:  
**Draft Copy Only**  
 - PLAN REFERENCE -  
**2130\_67**



DESIGNED: R. Howes 28/10/11  
 DRAWN: R. Howes 16/01/12  
 CHECKED:  
 APPROVED:  
 DRAWING FILE: 2130\_61.dwg

SURVEYED: E. Verhuizen  
 FIELD BOOK:  
 ORIGIN OF LEVELS: STN 4416PM 109587  
 DATUM: AHD  
 CIVILCAD FILE:

AMENDMENTS



**CITY OF SHOALHAVEN**  
 Beaumont  
 Cambewarra Mountain Lookout  
 Concrete Details

SCALE:  
 1:20 for A1 size plot, 1:40 for A3 size plot  
 Do not scale off drawings.  
 Confirm all dimensions on site prior to start of construction.  
 NOTE:  
 This drawing, design and the copyright therein are the property of Shoalhaven City Council. It has been produced by the City Services - Project Delivery Section and must not be used, reproduced or copied wholly or in part without the permission of the Project Delivery Manager.

DIRECTOR CITY SERVICES & OPERATIONS: DATE:  
**Draft Copy Only**  
 - PLAN REFERENCE -  
**2130\_68**