

**SCOPE OF WORKS - CONSTRUCTION:**

The scope of work is generally as shown on the drawings and is to be read in conjunction with the general specification notes.  
**EXTENT OF WORK IS TO BE ADVISED.**

**FINISHES & ABBREVIATIONS SCHEDULE:**

Refer to Details and General notes for additional information.

Install all products, items, finishes as per suppliers / manufacturers recommendations. Design materials and workmanship shall be in accordance with relevant Australian Standards and the National Construction Code. In particular AS1428

Refer to Electrical Engineers Documentation.

Refer to Structural Engineers Documentation.

Please obtain approval prior to selecting an alternative equivalent finish / product to those listed below.

**B01** Bin. Street Furniture Australia (R). Code:TBA. Colour: TBA. Adjustable legs.

**BUB** Shoalhaven Water Bubbler

**CON01** Concrete pavement - Concrete (32mpa) Finish: Broomed. R10 non-slip finish. Seal concrete with Klen 'Tuscan' seal.

**S01** Seat Type: Street Furniture Australia (R).

Code: TBA Frame colour: TBA

Batten colour: TBA

Fixing: Adjustable legs, Surface mount. Paint all fixings: TBA

Skatelugs: One in the centre of each seat.

**SHEL** Shelter TBA

**TA** Table type: Street Furniture Australia (R).

Code: TBA Frame colour: TBA

Batten colour: TBA

Fixing: Adjustable legs, Surface mount. Paint all fixings: TBA

Skatelugs: One in the centre of each seat.

**TREE** Cupaniopsis anarcardioides 75ltr

**BR** Bike Rack TBA



**PLAN REFERENCES**

Title Sheet / Locality Plan	5372_01
Survey Plan	5372_02
Demolition Plan	5372_03
Site Layout Plan	5372_04
Floor Plan	5372_05
Elevations	5372_06
Sections	5372_07
Details / General Notes	5372_08

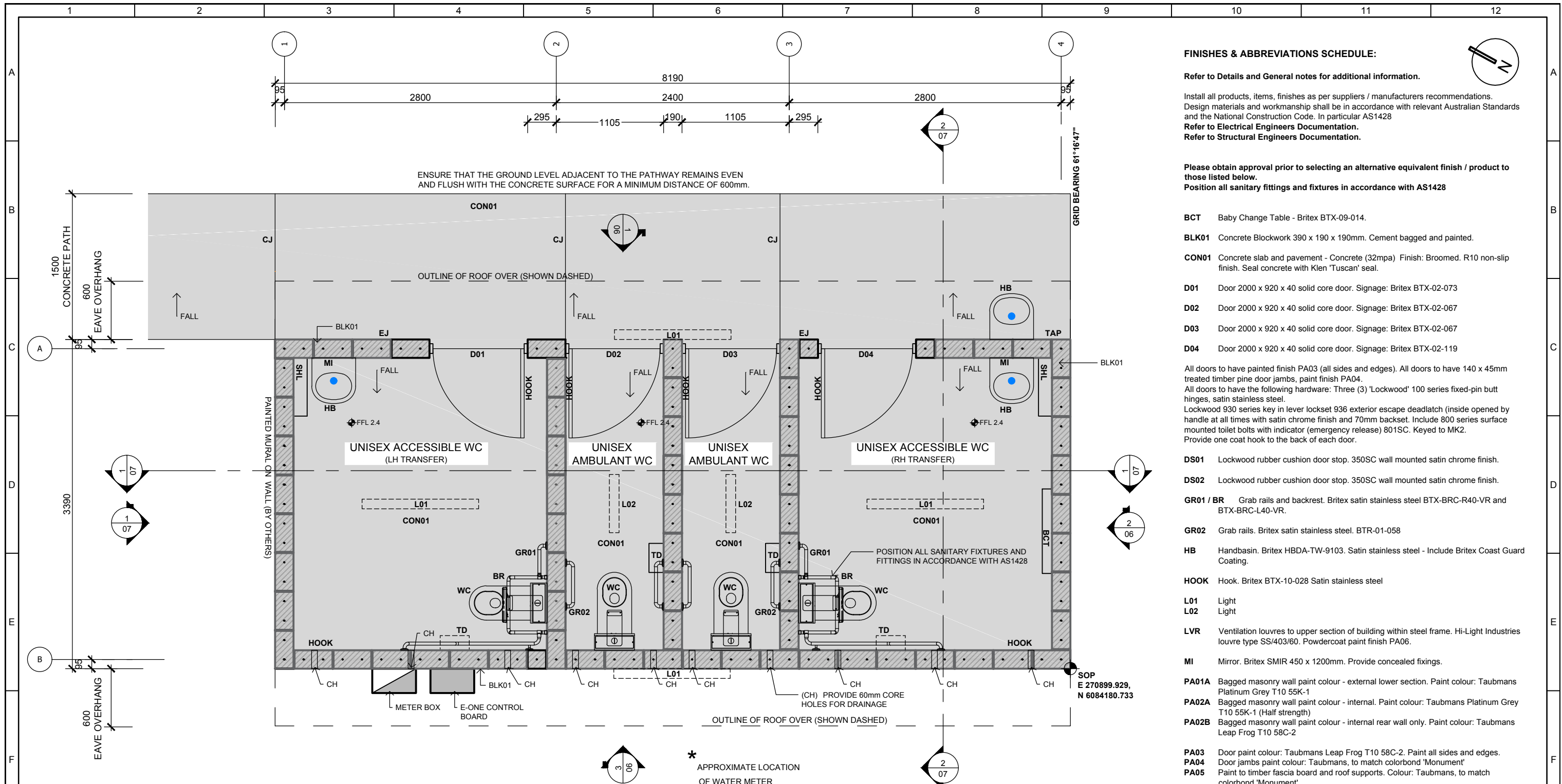
DESIGNED: K.B	FEB. 2016	SURVEYED: E. Venhuizen	Sept. 2015
DRAWN: K. Barrie	FEB. 2016	FIELD BOOK:	
CHECKED: <i>Robyn Adams</i>	04/04/16	ORIGIN OF LEVELS:	
APPROVED:		DATUM: AHD	
CLIENT: Brad Davis		CAD FILE: 5372_01.dwg	



**CITY OF SHOALHAVEN**  
 Ulladulla Harbour - Sea Pool - Wason Street  
 Public Amenities  
 Site Layout Plan

SCALE: NTS  
 Do not scale off drawings.  
 Confirm all dimensions on site prior to start of construction.  
 NOTE:  
 This drawing, design and the copyright therein are the property of Shoalhaven City Council. It has been produced by the Assets & Works - Project Delivery Section and must not be used, reproduced or copied wholly or in part without the permission of the Project Delivery Manager.

DIRECTOR OF ASSETS & WORKS: DATE:  
**Draft Copy Only**  
 - PLAN REFERENCE -  
**5372\_04**



**FINISHES & ABBREVIATIONS SCHEDULE:**

Refer to Details and General notes for additional information.

Install all products, items, finishes as per suppliers / manufacturers recommendations. Design materials and workmanship shall be in accordance with relevant Australian Standards and the National Construction Code. In particular AS1428

Refer to Electrical Engineers Documentation.

Refer to Structural Engineers Documentation.

Please obtain approval prior to selecting an alternative equivalent finish / product to those listed below.

Position all sanitary fittings and fixtures in accordance with AS1428

- BCT** Baby Change Table - Britex BTX-09-014.
- BLK01** Concrete Blockwork 390 x 190 x 190mm. Cement bagged and painted.
- CON01** Concrete slab and pavement - Concrete (32mpa) Finish: Broomed. R10 non-slip finish. Seal concrete with Klen 'Tuscan' seal.
- D01** Door 2000 x 920 x 40 solid core door. Signage: Britex BTX-02-073
- D02** Door 2000 x 920 x 40 solid core door. Signage: Britex BTX-02-067
- D03** Door 2000 x 920 x 40 solid core door. Signage: Britex BTX-02-067
- D04** Door 2000 x 920 x 40 solid core door. Signage: Britex BTX-02-119

All doors to have painted finish PA03 (all sides and edges). All doors to have 140 x 45mm treated timber pine door jambs, paint finish PA04.

All doors to have the following hardware: Three (3) 'Lockwood' 100 series fixed-pin butt hinges, satin stainless steel.

Lockwood 930 series key in lever lockset 936 exterior escape deadlatch (inside opened by handle at all times with satin chrome finish and 70mm backset. Include 800 series surface mounted toilet bolts with indicator (emergency release) 801SC. Keyed to MK2. Provide one coat hook to the back of each door.

- DS01** Lockwood rubber cushion door stop. 350SC wall mounted satin chrome finish.
- DS02** Lockwood rubber cushion door stop. 350SC wall mounted satin chrome finish.
- GR01 / BR** Grab rails and backrest. Britex satin stainless steel BTX-BRC-R40-VR and BTX-BRC-L40-VR.
- GR02** Grab rails. Britex satin stainless steel. BTR-01-058
- HB** Handbasin. Britex HBDA-TW-9103. Satin stainless steel - Include Britex Coast Guard Coating.
- HOOK** Hook. Britex BTX-10-028 Satin stainless steel
- L01** Light
- L02** Light
- LVR** Ventilation louvres to upper section of building within steel frame. Hi-Light Industries louvre type SS/403/60. Powdercoat paint finish PA06.
- MI** Mirror. Britex SMIR 450 x 1200mm. Provide concealed fixings.
- PA01A** Bagged masonry wall paint colour - external lower section. Paint colour: Taubmans Platinum Grey T10 55K-1
- PA02A** Bagged masonry wall paint colour - internal. Paint colour: Taubmans Platinum Grey T10 55K-1 (Half strength)
- PA02B** Bagged masonry wall paint colour - internal rear wall only. Paint colour: Taubmans Leap Frog T10 58C-2
- PA03** Door paint colour: Taubmans Leap Frog T10 58C-2. Paint all sides and edges.
- PA04** Door jambs paint colour: Taubmans, to match colorbond 'Monument'
- PA05** Paint to timber fascia board and roof supports. Colour: Taubmans, to match colorbond 'Monument'
- PA06** Powdercoated finish to Louvres and Louvre frame. Colour: Taubmans Green Pear T10 59C-2
- PA07** Powdercoated finish to meter box and E-one control board. Colour: Taubmans Platinum Grey T10 55K-1

- RF** Colorbond 'Monument' Roof sheeting.
- RF02** Translucent roof sheeting
- SHL** Shelf Satin stainless steel. Britex BTX-10-011. Include Britex Coast guard coating.
- TAP** Provide tap to external wall with vandalproof system
- TD** Toilet tissue dispenser satin stainless steel. Dual roll including padlocks (supplied by SCC)
- WC** Toilet and Cistern. Britex PTSDCS with Seat SVRC-N. Include Britex Coast guard coating.

**GENERAL NOTES:**

Setout to be approved by superintendent prior to commencing. Refer to Survey Drawings for Survey Control.

The position of services are to be verified on site prior to commencing work.

All service pit locations, adjustments and replacements are to be undertaken only by authorised licensed contractors.

Below ground service locations, adjustments and replacements are to be undertaken by a licensed contractor authorised to work on the service.

This work forms part of the scope of works.

**1 FLOOR PLAN**

**PLAN REFERENCES**

Title Sheet / Locality Plan	5372_01
Survey Plan	5372_02
Demolition Plan	5372_03
Site Layout Plan	5372_04
Floor Plan	5372_05
Elevations	5372_06
Sections	5372_07
Details / General Notes	5372_08

DESIGNED: K.B FEB. 2016	SURVEYED: E. Venhuizen Sept. 2015	ISSUES & AMENDMENTS
DRAWN: K. Barrie FEB. 2016	FIELD BOOK:	01 Issued for Review / Comment 24/03/16 02 Issued for Information (community) 04/04/16
CHECKED: <i>Brad Davis</i> 04/04/16	ORIGIN OF LEVELS:	
APPROVED:	DATUM: AHD	
CLIENT: Brad Davis	CAD FILE: 5372_01.dwg	



**CITY OF SHOALHAVEN**  
Ulladulla Harbour - Sea Pool - Wason Street  
Public Amenities  
Floor Plan

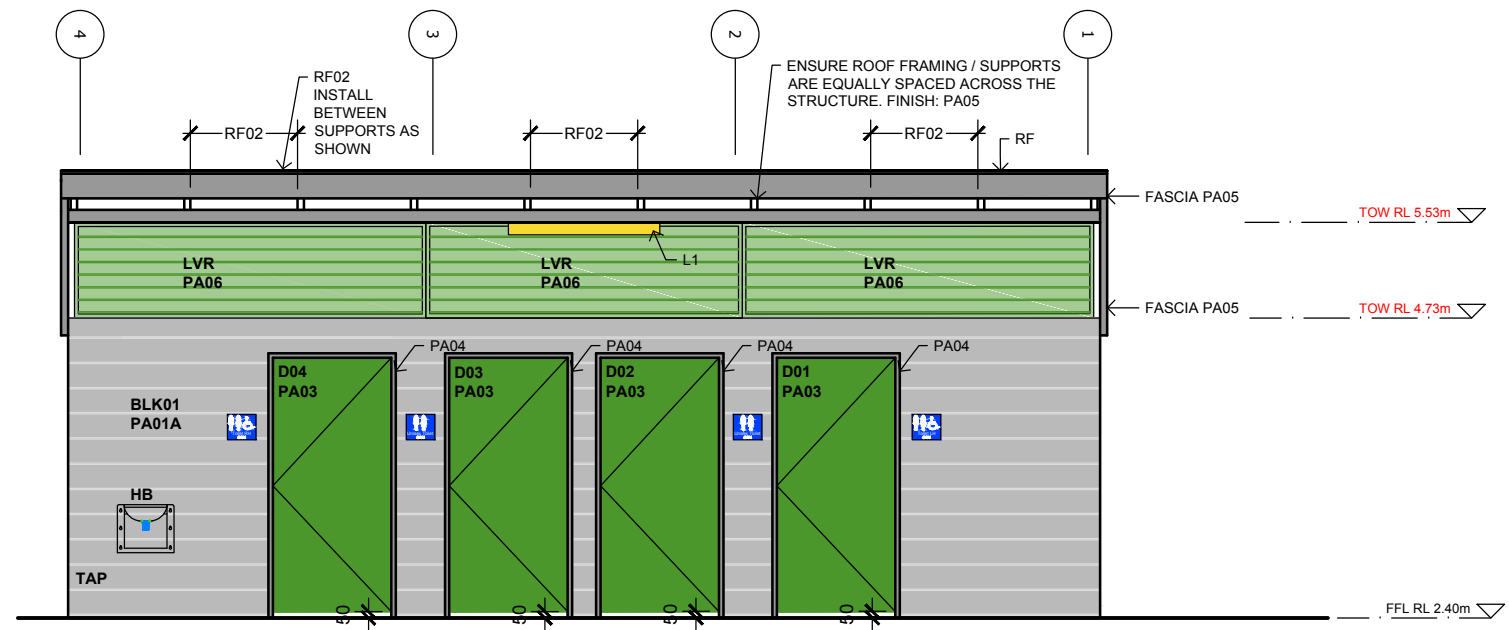
SCALE:  
1:20 for A1 size sheet, 1:40 for A3 size sheet  
Do not scale off drawings.  
Confirm all dimensions on site prior to start of construction.

NOTE:  
This drawing, design and the copyright therein are the property of Shoalhaven City Council. It has been produced by the Assets & Works - Project Delivery Section and must not be used, reproduced or copied wholly or in part without the permission of the Project Delivery Manager.

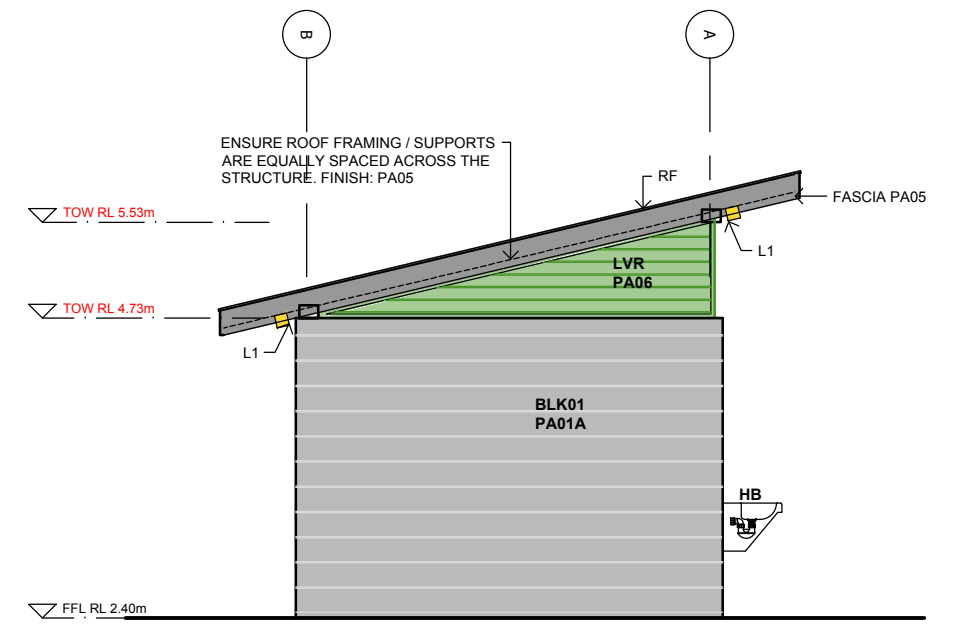
DIRECTOR OF ASSETS & WORKS: DATE:

**Draft Copy Only**

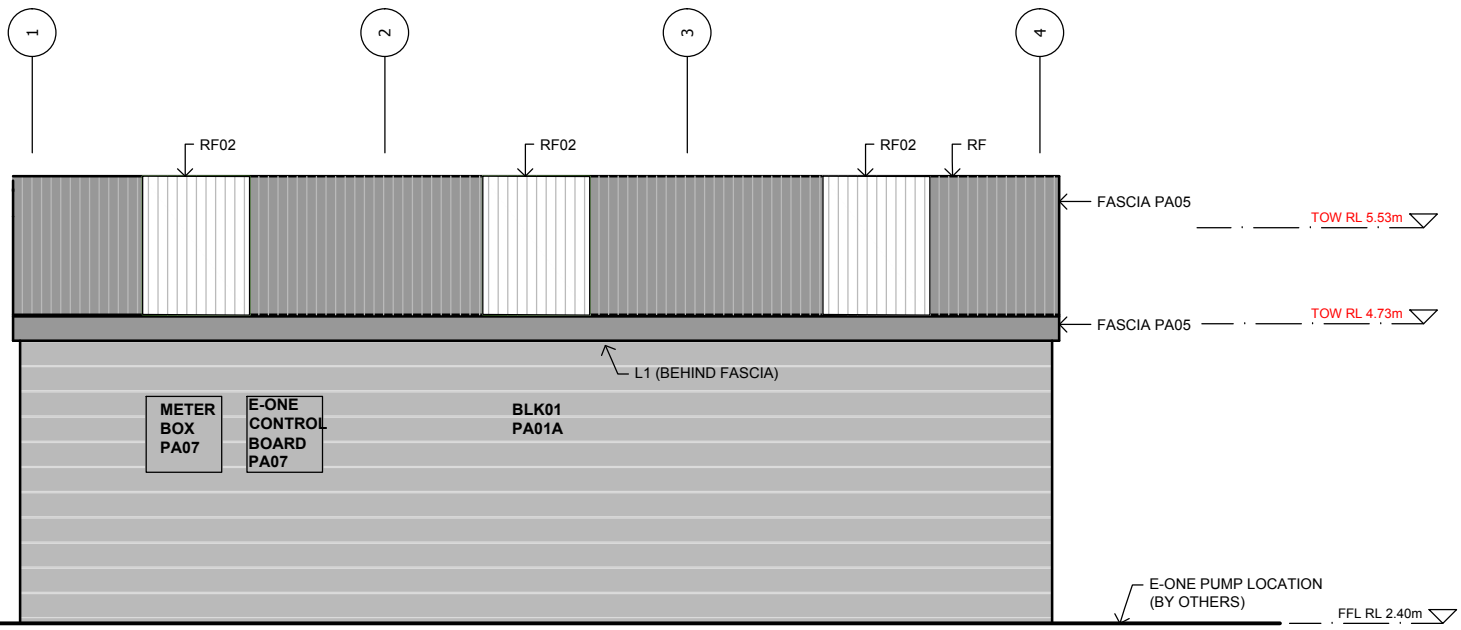
- PLAN REFERENCE -  
**5372\_05**



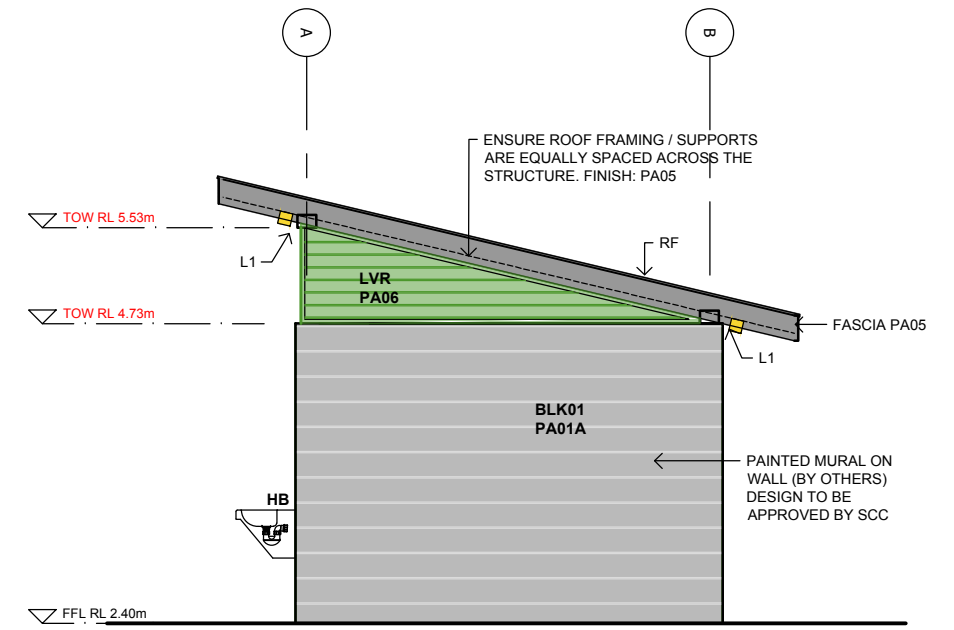
1 NORTH EAST ELEVATION



2 SOUTH EAST ELEVATION



3 SOUTH WEST ELEVATION



4 NORTH WEST ELEVATION

PLAN REFERENCES

Title Sheet / Locality Plan	5372_01
Survey Plan	5372_02
Demolition Plan	5372_03
Site Layout Plan	5372_04
Floor Plan	5372_05
Elevations	5372_06
Sections	5372_07
Details / General Notes	5372_08

DESIGNED: K.B FEB. 2016	SURVEYED: E. Venhuizen Sept. 2015	ISSUES & AMENDMENTS
DRAWN: K. Barrie FEB. 2016	FIELD BOOK:	01 Issued for Review / Comment 24/03/16 02 Issued for Information (community) 04/04/16
CHECKED: <i>Brad Davis</i> 04/04/16	ORIGIN OF LEVELS:	
APPROVED:	DATUM: AHD	
CLIENT: Brad Davis	CAD FILE: 5372_01.dwg	



**CITY OF SHOALHAVEN**  
Ulladulla Harbour - Sea Pool - Wason Street  
Public Amenities  
Elevations

SCALE: 1:30 for A1 size sheet, 1:60 for A3 size sheet  
Do not scale off drawings.  
Confirm all dimensions on site prior to start of construction.  
NOTE: This drawing, design and the copyright therein are the property of Shoalhaven City Council. It has been produced by the Assets & Works - Project Delivery Section and must not be used, reproduced or copied wholly or in part without the permission of the Project Delivery Manager.

DIRECTOR OF ASSETS & WORKS: DATE:

**Draft Copy Only**

- PLAN REFERENCE -  
**5372\_06**