

**NOTES:**

- POSITION OF CRITICAL SHOALWATER SERVICES ARE INDICATIVE ONLY AND BUILDING FOOTINGS MUST REMAIN 3M CLEAR OF UNDERGROUND SERVICES.
- PROPOSED FLOOR LEVEL IS 1M AHD. FLOOD PLANNING LEVEL ON THE SITE IS 3.2M AHD. WORKS BELOW THE FLOOD PLANNING LEVEL MUST BE OF FLOOD COMPATIBLE MATERIAL AND STRUCTURALLY SOUND. NO ELECTRICAL APPLIANCES MAY BE INSTALLED BELOW THE FLOOD PLANNING LEVEL.
- PATH TO COMPLY WITH AS1428.1 GRADIENTS. (1m FALL EQUAL TO 20M HORIZONTAL TRAVEL).
- WHERE POSSIBLE 1 IN 4 BATTERING OF IMPORTED SOIL TO MAKE UP DIFFERENCE BETWEEN PROPOSED PATH LEVELS AND EXISTING GROUND.

**LEGEND**

- ALLOTMENT BOUNDARY LINES
- EXISTING WATERMAIN 375mm AC/C
- NOT SURVEYED INDICATIVE ONLY CONFIRM PRIOR TO SETOUT OF BUILDING - EXISTING WATERMAIN 375mm AC/C
- EXISTING SEWER RISING MAIN 350mm AC/D
- PROPOSED SEWER PRESSURE LINE
- PROPOSED ELECTRICAL CONNECTION
- EXISTING TREE
- PROPOSED BUILDING FOOTPRINT
- EXISTING TURFED AREA - COUNCIL OWNED OR MANAGED
- EXISTING SEALED ROAD AND CARPARK
- EXISTING CONCRETE FOOTPATH
- EXISTING FORMATION

|                       |                          |                                  |
|-----------------------|--------------------------|----------------------------------|
| DESIGNED: J.SIMPSON   | SURVEYED:                | AMENDMENTS                       |
| DRAWN: J.SIMPSON      | FIELD BOOK:              | 6 Issue for information 12/07/19 |
| CHECKED:              | ORIGIN OF LEVELS:        |                                  |
| APPROVED:             | DATUM:                   |                                  |
| CAD FILE: 5507_01.vwx | CLIENT: PROJECT DELIVERY |                                  |

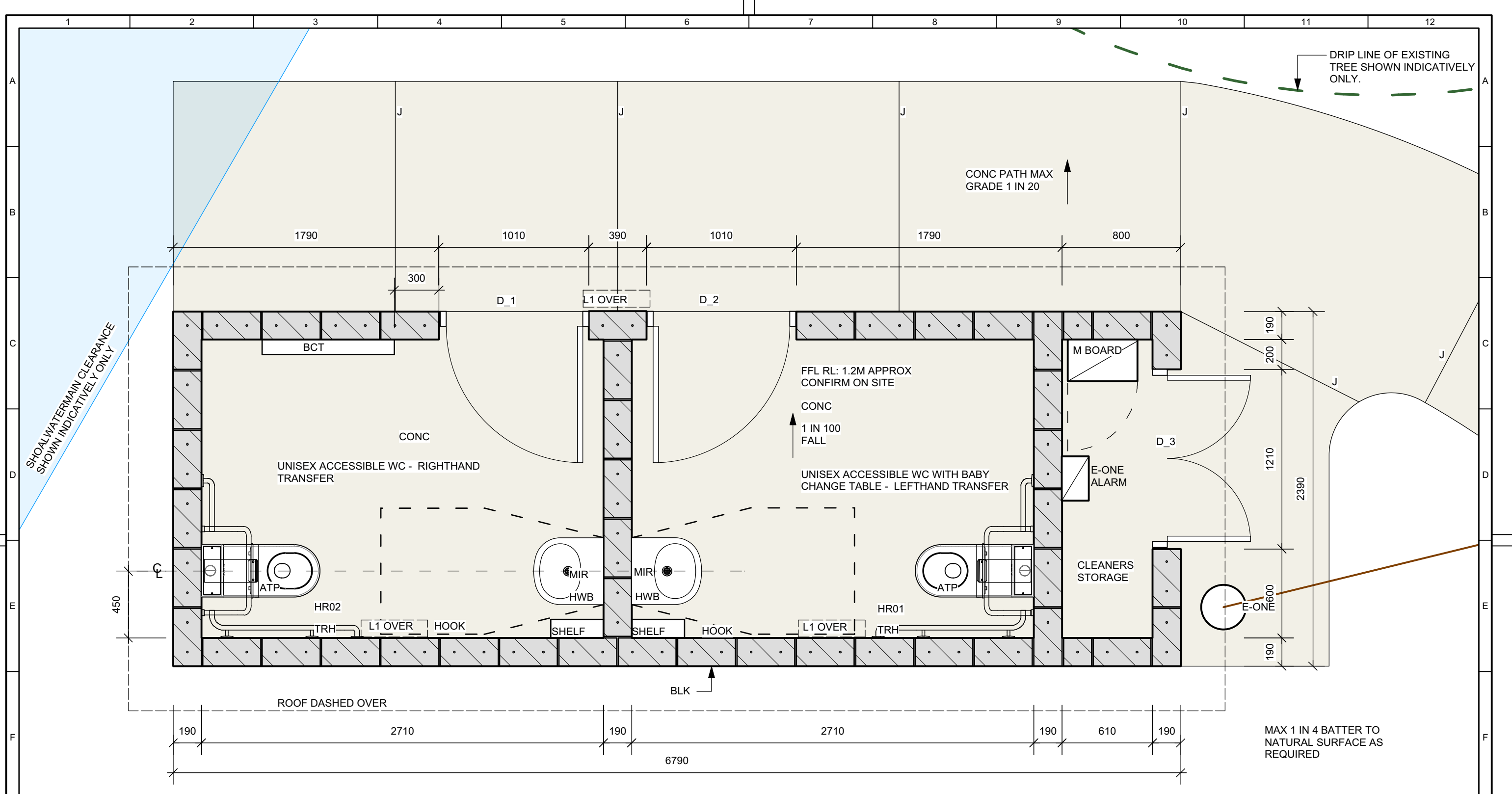
**CITY OF SHOALHAVEN**  
Sussex Inlet, River Road  
Chris Creek Amenities  
Site Plan

SCALE: 1:400@A3.


Do not scale off drawings.  
Confirm all dimensions on site prior to start of construction.

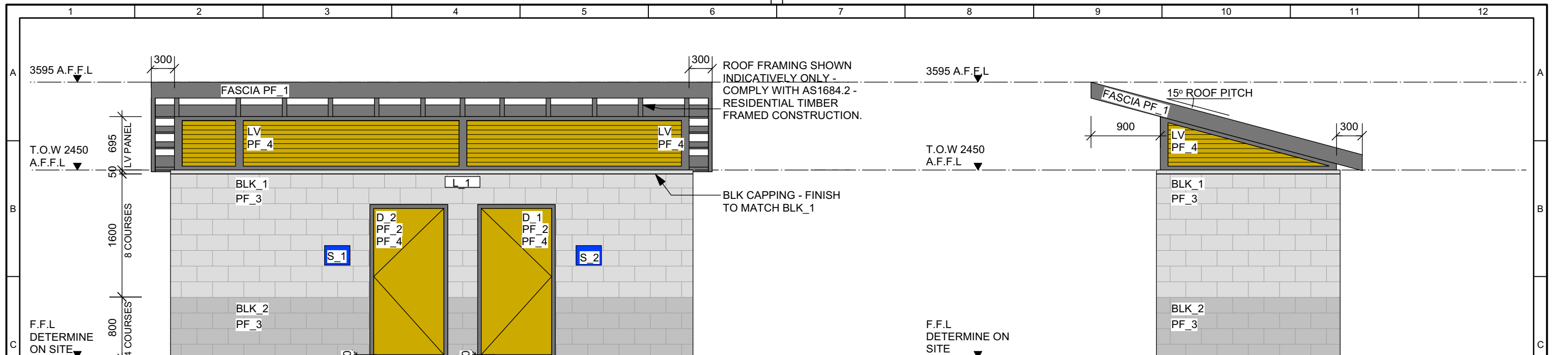
NOTE:  
This drawing, design and the copyright therein are the property of Shoalhaven City Council. It has been produced by the Assets & Works - Project Delivery Section and must not be used, reproduced or copied wholly or in part without the permission of the Project Delivery Manager.

- PLAN REFERENCE -  
**5507 03**



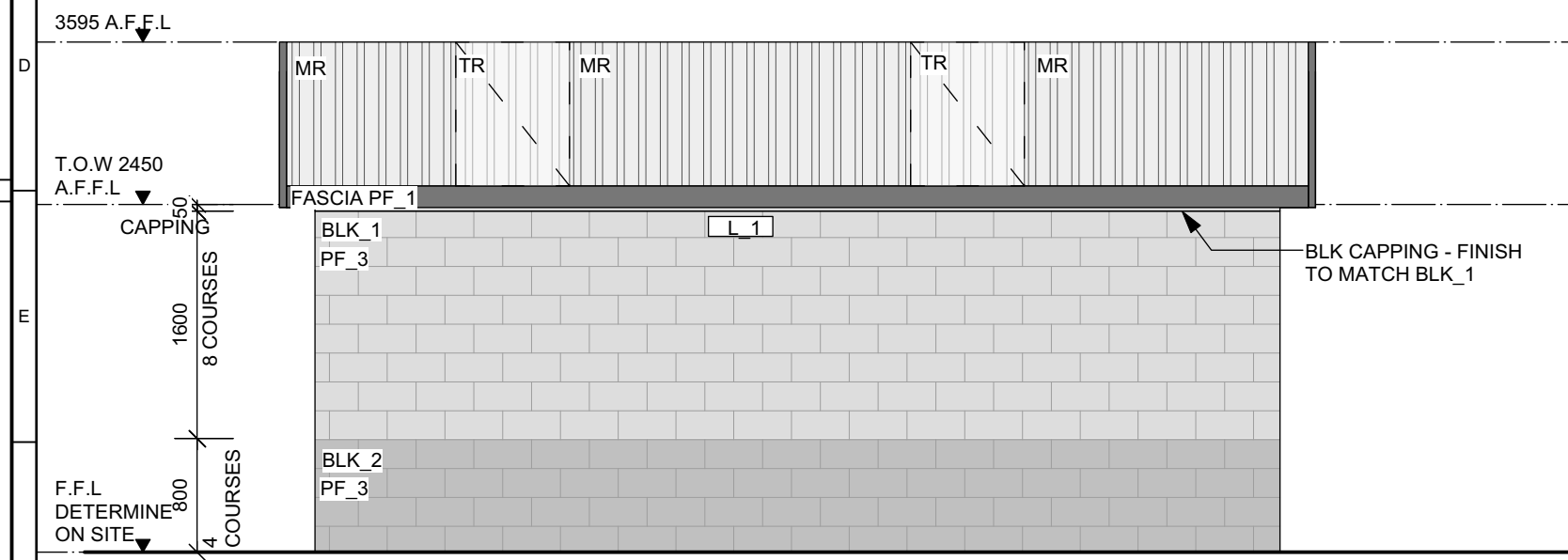
| LEGEND    |   |
|-----------|---|
| ATP       | STAINLESS STEEL ACCESSIBLE TOILET PAN. EQUAL TO BRITEX 'PTSD' SUITE WITH NAVY SEAT.   |
| BCT       | STAINLESS STEEL BABY CHANGE TABLE.  |
| BLK       | COREFILLED REINFORCED CONCRETE BLOCKWORK. SELECTION - GB SMOOTH FROM AUSTRAL. M4 GRADE MORTAR. FACE SIDE EXTERNAL.                                    |
| CONC      | CONCRETE FLOOR WITH SEALANT.  |
| D_1 & D_2 | PAINTED SOLID CORE DOORS WITH ACCESSIBLE HARDWARE.  |
| D3        | LOCKED STEEL GATE TO ALLOW VISUAL ACCESS TO E-ONE ALARM   |
| E-ONE     | INSTALL E-ONE SEWERAGE PUMP AND ALARM AND CONNECT TO SEWER. ALARM TO BE INSTALLED TO PROVIDE OPENING CLEARANCES FOR ADJACENT METERBOARD.              |
| HOOK      | STAINLESS STEEL CLOTHES HOOK INSTALLED IN ACCORDANCE WITH AS 1428.1 PART 15.4.4.  |
| HR01      | STAINLESS STEEL GRABRAIL WITH BACKREST - LEFT HAND TRANSFER.  |
| HR02      | STAINLESS STEEL GRABRAIL WITH BACKREST - RIGHT HAND TRANSFER.   |
| HWB       | STAINLESS STEEL ACCESSIBLE HANDWASH BASIN WITH COLD WATER TAP. EQUAL TO BRITEX BASIN CODE 'HBDA' AND BRITEX TAP CODE 'TW-9103'(TIMED FLOW LEVER TAP). |
| J         | SUGGESTED POSITION OF CONTROL & EXPANSION JOINTS  |
| L_1       | WALL MOUNTED VANDAL RESISTANT LED BATTEN LIGHT.   |
| MBOARD    | ELECTRICAL METERBOARD.  |
| MIR       | MIRROR POLISH STAINLESS STEEL MIRROR SIZED AND INSTALLED IN ACCORDANCE WITH AS1428.1 PART 15.4.1. EQUAL TO BRITEX 'BTX-07-032'.                       |
| SHELF     | STAINLESS STEEL SHELF. INSTALL IN ACCORDANCE WITH AS1428.1 PART 15.4.2. EQUAL TO BOBRICK '295x14'.  |
| TRH       | STAINLESS STEEL TOILET ROLL HOLDER.   |

|                              |                          |                                 |   |  |   |   |
|------------------------------|--------------------------|---------------------------------|---|--|---|---|
| DESIGNED: J.SIMPSON          | SURVEYED:                | AMENDMENTS                      |  | <h2 style="text-align: center;">CITY OF SHOALHAVEN</h2> <p style="text-align: center;">Sussex Inlet, River Road<br/>Chris Creek Amenities<br/>Floor Plan</p> | SCALE: 1:25@ A3   | <p>Do not scale off drawings.<br/>Confirm all dimensions on site prior to start of construction.<br/>NOTE:<br/>This drawing, design and the copyright therein are the property of Shoalhaven City Council. It has been produced by the Assets &amp; Works - Project Delivery Section and must not be used, reproduced or copied wholly or in part without the permission of the Project Delivery Manager.</p> |
| DRAWN: J.SIMPSON             | FIELD BOOK:              | 1 Issue for information 11/7/19 |   |  | <p style="text-align: right;">- PLAN REFERENCE -<br/><b>5507 06</b></p> |   |
| CHECKED: 21.05.2019          | ORIGIN OF LEVELS:        |                                 |   |  |   |   |
| APPROVED: B.DAVIS 21.05.2019 | DATUM:                   |                                 |   |  |   |   |
| CAD FILE: 5507_01.vwx        | CLIENT: PROJECT DELIVERY |                                 |   |  |   |   |

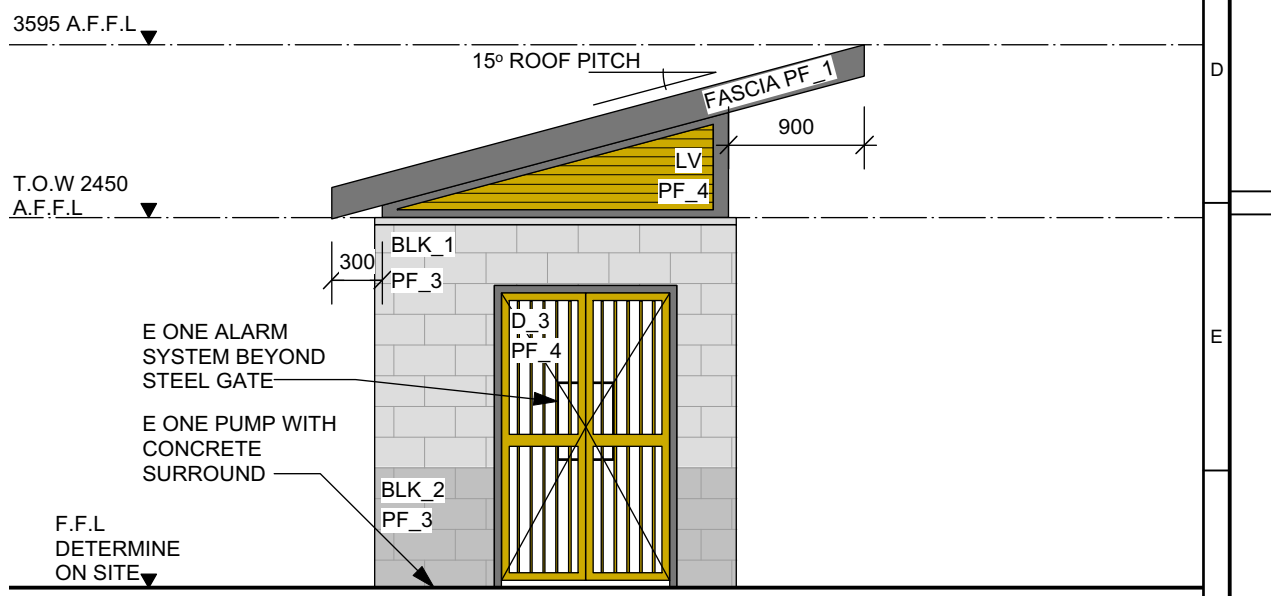


1 East Elevation

2 North Elevation



3 East Elevation



4 North Elevation

| LEGEND    |  |             |  |      |  |       |   |
|-----------|--|-------------|--|------|--|-------|---|
| A.F.F.L   | ABOVE FINISHED FLOOR LEVEL.  | E-ONE ALARM | MONITORING SYSTEM FOR EONE PUMP.   | PF_1 | PAIN'T FINISH TO DOOR FRAME AND ROOF FRAMING. COLOUR MATCH: AS2700 N64 'DARK'GREY'.                    | S_1   | SIGN - AS1428.1 COMPLIANT UNISEX ACCESSIBLE AMENITIES AND BABY CHANGE SIGN - LEFT HAND TRANSFER.  |
| BLK_1     | COREFILLED REINFORCED CONCRETE BLOCKWORK. SELECTION - GB SMOOTH 'NICKEL' FROM AUSTRAL. | F.F.L       | FINISHED FLOOR LEVEL.  | PF_2 | PAIN'T FINISH TO DOOR PANEL. COLOUR MATCH AS2700 Y42 MUSTARD.  | S_2   | SIGN - AS1428.1 COMPLIANT UNISEX ACCESSIBLE AMENITIES SIGN - LEFT HAND TRANSFER.  |
| BLK_2     | COREFILLED REINFORCED CONCRETE BLOCKWORK. SELECTION - GB SMOOTH 'PEWTER' FROM AUSTRAL. | L_1         | WALL MOUNTED VANDAL RESISTANT LED BATTEN LIGHT.                          | PF_3 | ANTI-GRAFFITI COATING BY ENVIRONMENTAL COATINGS. PRODUCT: 'INVISISHIELD'                               | TR    | UV STABILISED TRANSLUCENT POLYCARBONATE ROOF SHEETING OVER EACH ROOM FOR LIGHTING. PROFILE TO MATCH CUSTOM ORB. COLOUR 'WHITE DIFFUSE'. |
| CONC      | CONCRETE FLOOR SLAB AND PATH WITH SEALANT.   | LV          | METAL LOUVRES. POWDERCOATED TO MATCH AS2700 Y42 MUSTARD BY MANUFACTURER. | PF_4 | ANTI GRAFFITI COATING BY ENVIRONMENTAL COATINGS. APPLY AFTER APPLICATION OF PAINT. PRODUCT: 'EASY ON'. | NOTE: | -UNLINED CEILING WITH EXPOSED RAFTERS AND BATTENS. ALL FRAMING PAINTED TO MATCH AS2700 N64 'DARK GREY'.                                 |
| D_1 & D_2 | 2m x 1.01m PAINTED SOLID CORE DOORS WITH ACCESSIBLE HARDWARE.                          | MBOARD      | ELECTRICAL METERBOARD  | R.L  | REDUCED LEVEL.   |       |   |
| D_3       | LOCKED STEEL GATE TO ALLOW VISUAL ACCESS TO E-ONE ALARM                                | MR          | METAL ROOF - COLORBOND ULTRA CUSTOM ORB COLOUR: 'SURFMIST'.              |      |  |       |   |

|                              |                          |                                 |
|------------------------------|--------------------------|---------------------------------|
| DESIGNED: J.SIMPSON          | SURVEYED:                | AMENDMENTS                      |
| DRAWN: J.SIMPSON             | FIELD BOOK:              | 1 Issue for information 17/5/19 |
| CHECKED: 21.05.2019          | ORIGIN OF LEVELS:        | 2 Issue for approval 17/5/19    |
| APPROVED: B.DAVIS 21.05.2019 | DATUM:                   | 3 Issue for information 11/7/19 |
| CAD FILE: 5507_01.vwx        | CLIENT: PROJECT DELIVERY |                                 |

**CITY OF SHOALHAVEN**  
Sussex Inlet, River Road  
Chris Creek Amenities Elevations

SCALE: 1:50@A3

Do not scale off drawings. Confirm all dimensions on site prior to start of construction.

NOTE: This drawing, design and the copyright therein are the property of Shoalhaven City Council. It has been produced by the Assets & Works - Project Delivery Section and must not be used, reproduced or copied wholly or in part without the permission of the Project Delivery Manager.

- PLAN REFERENCE -  
**5507 08**