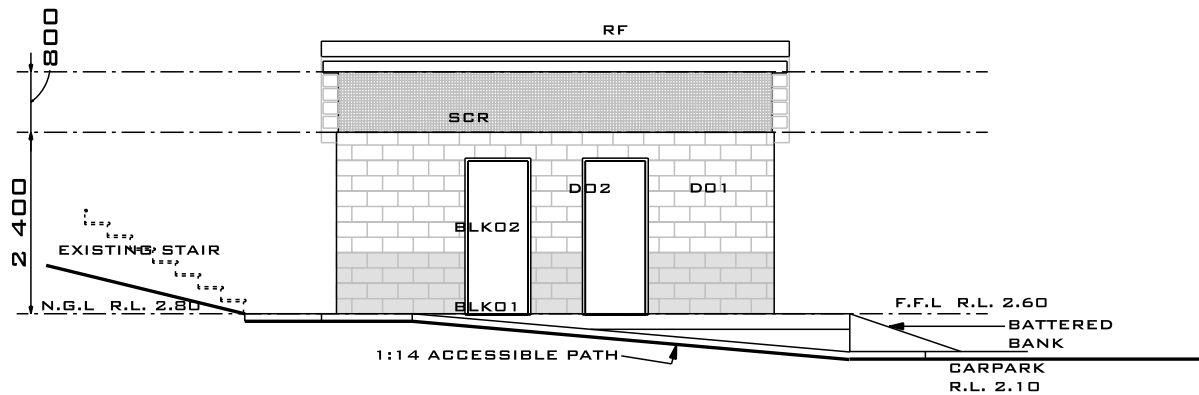
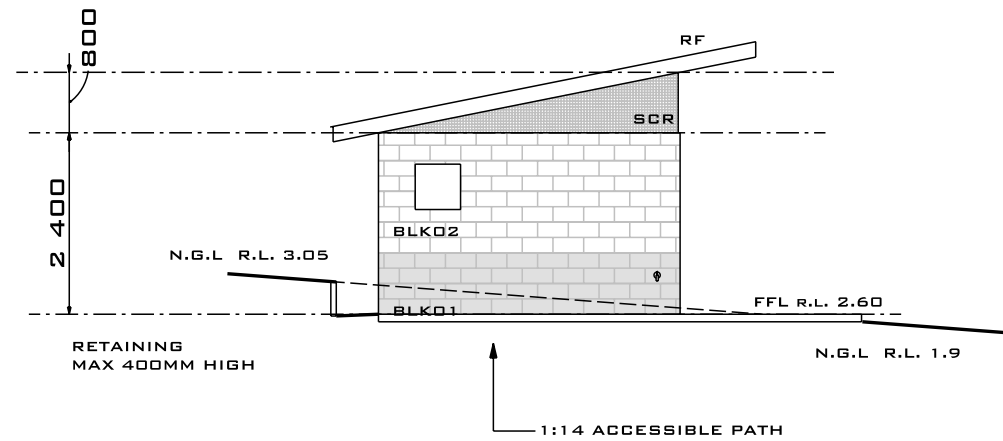


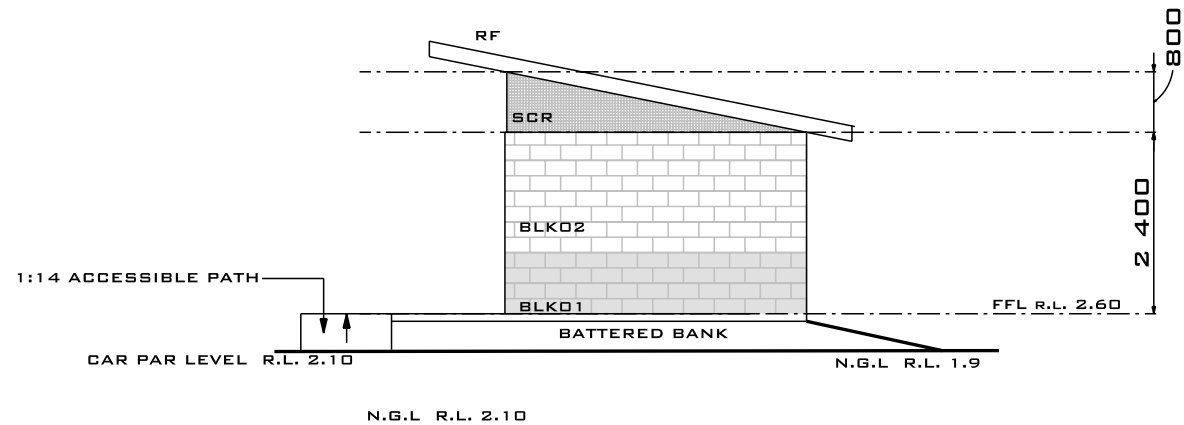
WEST ELEVATION



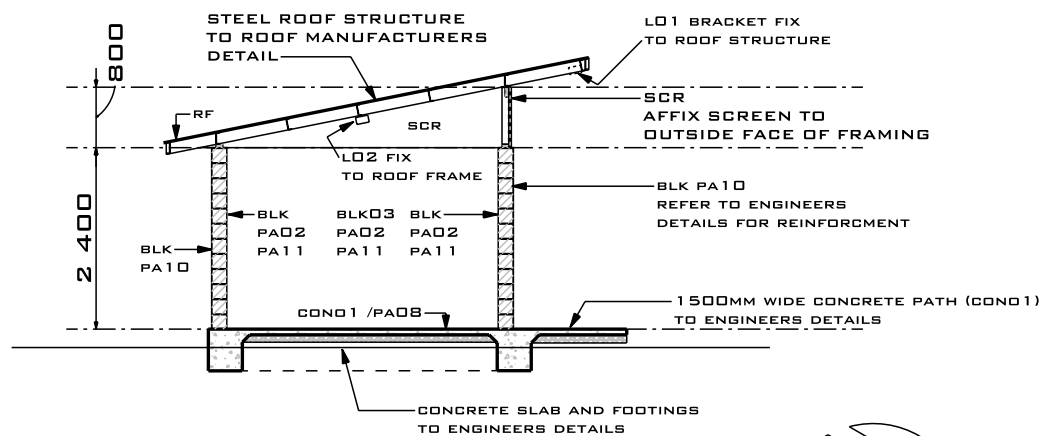
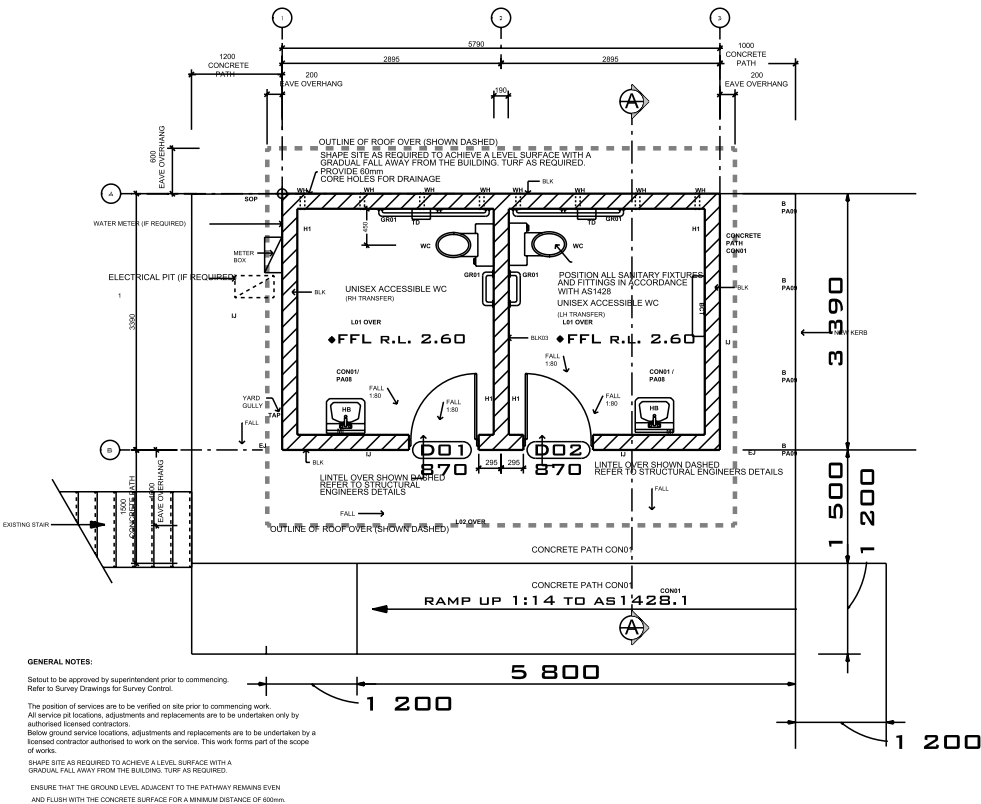
EAST ELEVATION



SOUTH ELEVATION



NORTH ELEVATION



SECTION A-A

- FINISHES & ABBREVIATIONS LEGEND:**
- Refer to Details and Specification for additional information.
- Install all products, items, finishes as per suppliers / manufacturers recommendations.
- Design materials and workmanship shall be in accordance with relevant Australian Standards and the National Construction Code.
- Refer to Electrical, Structural / Civil and Hydraulic Engineers Documentation.
- Please obtain approval prior to selecting an alternative equivalent finish / product to those listed below.
- Position all sanitary fittings and fixtures in accordance with AS1428
- AS1428.1 Clearances noted
- B Bollards
 - BIN Bin - External
 - BCT Baby Change Table
 - BLK01 Concrete Blockwork - Type 01
 - BLK02 Concrete Blockwork - Type 02
 - CON01 Concrete slab finish
 - DD1 External Door
 - DD2 External Door
 - EJ Expansion Joint
 - GR01 Grab rails
 - H1 Clothes Hook
 - HB Integrated handbasin
 - IJ Isolation joint
 - L01 Light Type 01. Refer to Electrical Engineers documentation.
 - L02 Light Type 02. Refer to Electrical Engineers documentation.
 - MI Mirror
 - MIR Mirror reverse
 - PA01 Powdercoated paint finish to perforated screen.
 - PA02 Bagged masonry wall paint finish - Internal only.
 - PA03 Door paint colour.
 - PA04 Treated timber pine door jambs paint colour.
 - PA05 Galvanneal steel access panel paint colour.
 - PA08 Concrete floor sealer.
 - PA09 Paint finish to steel roof framing and steel bollards.
 - PA10 Anti-Graffiti coating - Type 01
 - PA11 Anti-Graffiti coating - Type 02
 - RF Retaining wall - BLK01
 - RF01 Opaque polycarbonate roof sheeting
 - SCR Perforated aluminum screen / panel to upper section of building.
 - SD Soap Dispenser
 - SIGN01 Unisex accessible WC (RH Transfer) Braille Tactile Sign.
 - SIGN02 Unisex accessible WC (LH Transfer) and Baby Change Braille Tactile Sign.
 - SOP Set out point
 - TAP Provide tap to external wall with vandal proof system.
 - TD Toilet tissue dispenser.
 - WC Toilet and Cistern.
 - WH Core drilled weephole.