



Shoalhaven
City Council

SHOALHAVEN HEADS – RIVER ROAD ACTION PLAN

CONTACT INFORMATION

Group Name:	Shoalhaven Heads - River Road Bushcare
Contact:	John & Lynne Gilchrist
Address:	49A River Rd, Shoalhaven heads
Tel:	4448 7903
Email:	jgilchrist@westnet.com.au
Reserve Name:	Jerry Bailey
Reserve No:	NSH200
Land Tenure:	Crown TM/SCC
Comm. Land Type:	

1. BUSHCARE GROUP GOALS

The aims of the Shoalhaven Heads- River Road – Bushcare Group are as follows:

1. Undertake weed removal in a staged approach along the priority areas (see map) of the Shoalhaven River bank adjacent to River Rd Shoalhaven Heads.
2. Revegetate areas along the bank with local native grasses, groundcovers, shrubs and trees to replace areas where weed removal has been done with the aim to stabilise the river bank, provide habitat and food source for local fauna.

NOTE: ALL WEED CONTROL AND REMOVAL WILL BE DONE IN A STAGED APPROACH TO MINIMISE EROSION AND WILL BE FOLLOWED UP BY REPLACEMENT PLANTING.

2. SHOALHAVEN BUSHCARE GROUP ACTION PLAN (to be in conjunction with attached site map)

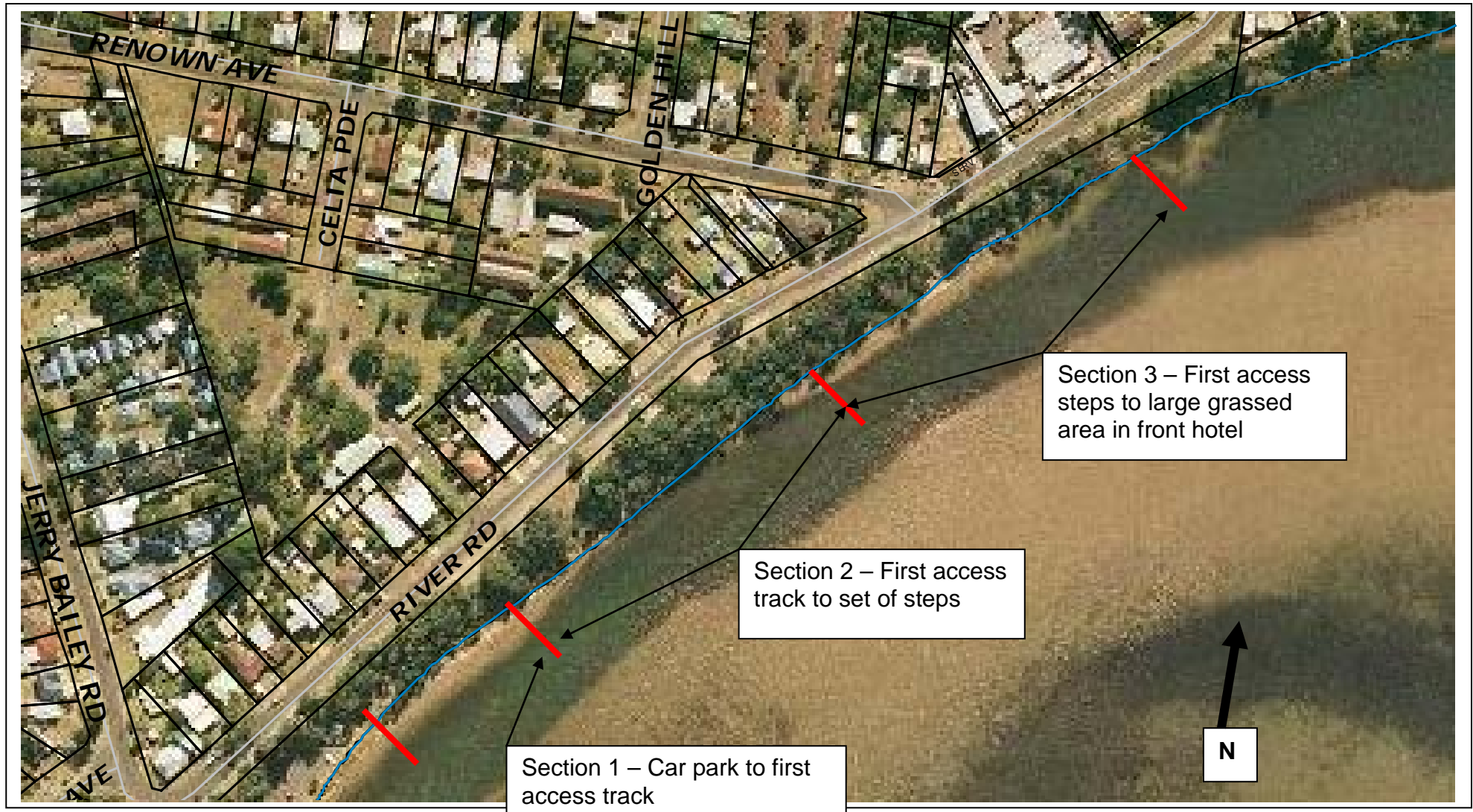
NOTE: Priority should be rated as H = High (within 12 months); M = Medium (1-3 years); L = Low

GROUP ACTION	PRIORITY	METHOD	TIME
<p>Section 1 River Bank from car park to 1st Access track This area was planted out in 2003/04 following primary weed control actions as follows:</p> <ol style="list-style-type: none"> 1. Bushcare Group to maintain existing plantings by spot spraying around plants and replacing as needed. 2. Buffer plant with grasses in between existing plantings as needed. 3. DO NOT remove large areas from steeper sections of the river bank (see attached bank transects for details) 4. DO NOT remove or spray weeds from first 2 metres of the toe/base of the bank to avoid erosion. 5. DO NOT plant large trees on the steeper slopes of the bank, only shrubs and groundcovers (see attached bank transects for details). 6. Spot spray Turkey Rhubarb along the whole section. 7. Monitor old coral tree stumps and logs for suckering and treat. 	<p>M</p>	<p>Stage 1 River Bank from Car park to 1st Access track.</p> <ol style="list-style-type: none"> 1. Spot spray around existing planting using glyphosate at a ration of 1:100 (glyphosate/water) 2. Plant as needed 3. See attached bank transects for details. 4. See attached bank transects for details 5. See attached bank transects for details 6. Spot spray using glyphosate at a ratio of 1:100. 7. Drill 10mm hole and inject with neat glyphosate. 	<ol style="list-style-type: none"> 1. Spring/Summer 2. Autumn 3. Ongoing 4. Ongoing 5. On going 6. During the growing season 7. During the growing season

GROUP ACTION (these should relate to your project description)	PRIORITY	METHOD	TIME
<p>Section 2 – First access track to set of steps This section of the river bank was planted out and treated for primary weeds in 2004 – 2007. 1. Same treatment as for section 1 although some additional plantings could be done on the flat sections of the river bank, between high tide mark and the steeper sections of the bank.</p>	M	Methods as per section 1 although see attached species list for supplementary planting species	As per section one

GROUP ACTION (these should relate to your project description)	PRIORITY	METHOD	TIME
<p>Section 3 – First access steps to large grasses area in front hotel</p> <p>This section has only recently received restoration works and there is some erosion issues due to a storm water drain outlet and extremely unstable river bank.</p> <ol style="list-style-type: none"> 1. No weed removal is to be undertaken in this section apart from preparation for plantings and spot spraying for <i>Acetosa sagittata</i> (Turkey Rhubarb). 2. All planting needs to be at a density of 2 plants per metre at a minimum. 3. Only work in 10 metres sections from West to East along the river bank to avoid over clearing. 4. Do not remove any large woody weeds such as Coral Trees or Lantana from steep sections of the bank without Council approval. 5. DO NOT remove or spray weeds from first 2 metres of the toe/base of the bank to avoid erosion. 6. DO NOT plant large trees on the steeper slopes of the bank, only shrubs and groundcovers (see attached bank transects for details). <p>WORK TIMETABLE GUIDELINE</p> <ol style="list-style-type: none"> 1. Weed control, maintenance of plantings, watering etc – October to April 2. Planting – March to October 	H	<ol style="list-style-type: none"> 1. Spot spray using glyphosate at a ration of 1:100. 2. Spot spray area to planted first in circle and plant at 2 per m2. 3. 10 metres sections along the bank. 4. Before attempting to undertake any large woody weed removal contact Council's Bushcare Coordinator for approval. 5. See attached bank transects for details 6. See attached bank transects for details 	<ol style="list-style-type: none"> 1. During the growing season 2. Autumn 3. On going 4. As required. 5. Summer Spring 6. Autumn

3. BUSHCARE GROUP ACTION PLAN MAP



4. BUSHCARE GROUP OH&S & EQUIPMENT REQUIREMENTS

Type of Activity	Yes	SWMS name included
Manual weed control (cut & paint, scrape and paint etc)	√	SWMS NR060
Chemical control (spraying of herbicides)	√	SWMS NR040
Planting	√	
Minor construction (walking track, fencing, outdoor furniture)		
Propagation & seed collection		
Education (school groups, field days etc)		
Other		

5. COUNCIL SUPPORT

- a. Provision of tools and safety equipment
- b. Provision of plants guards, stakes etc to the value of \$400/year
- c. Assistance with large woody weed removal
- d. Provision of herbicide

6. HAS A SITE HAZARD AND RISK ASSESSMENT BEEN COMPLETED FOR THE BUSHCARE SITE?

Yes √

Attach a copy of the site/s risk assessment to the plan.

7. LIST THE PERSONAL PROTECTION EQUIPMENT REQUIRED FOR VOLUNTEERS WHILST WORKING ON THE SITE

PPE Equipment Required
First Aid Kit
Gloves
Sunscreen
Insect repellent

8. POSSIBLE FUTURE FUNDING

Project	Funding source
Revegetation of riverbank and storm water management	SCC

**9. PLAN WILL BE REVIEWED YEARLY – NEXT REVIEW DUE:
APRIL 2013**

The group should review a summary of the Bushcare Policy & Procedures at the time of each annual review

10. PLEASE LIST OTHER LOCAL OR REGIONAL MANAGEMENT PLANS OR STRATEGIES THAT THIS PLAN RELATES TO

Name of document	Year it was produced	Produced by
Shoalhaven River Estuary Management Plan	2008	Shoalhaven City Council
Generic Community Plan of Management – Natural Areas	2001	Shoalhaven City Council
Shoalhaven Foreshore Reserves Policy	2005	Shoalhaven City Council
Shoalhaven Walking Track Strategy	2010	Shoalhaven City Council

11. SUGGESTED SPECIES LIST FOR FUTURE SITE REVEGETATION

OVERSTOREY TREES ONLY TO PLANTED ON THE LOWER SLOPES OF STAGE 1 & 2	
Botanical	Common
<i>Banksia integrifolia</i>	Coastal Banksia
<i>Banksia serrata</i>	Saw Tooth Banksia
SHRUBS CAN BE PLANTED ON STEEPER SLOPES OF STAGES 1, 2 & 3	
Botanical	Common
<i>Acacia longifolia</i> spp <i>longifolia</i>	Sydney Golden Wattle
<i>Callistemon linerifolius</i>	Willow Bottlebrush
<i>Grevillea speciosa</i>	Red Spider Flower
<i>Melaleuca hypericifolia</i>	Lemon Scented Melaleuca
<i>Myoporum boninense</i> spp <i>australe</i>	Boobialla
<i>Westringia fruticosa</i>	Coastal Rosemary
UNDERSTOREY (grasses, herbs, climbers) CAN BE PLANTED ON STEEPER SLOPES OF STAGES 1, 2 & 3	
Botanical	Common
<i>Atriplex hastata</i>	Salt Bush
<i>Dianella cerulea</i>	Blue Flax Lily
<i>Kennedia rubicunda</i>	Dusky Coral Pea
<i>Lomandra longifolia</i>	Club Matt Rush
<i>Microleana stipoides</i>	Meadow Rice Grass
<i>Oplismus aemulus</i>	Basket Grass
<i>Poa labillardierei</i>	Tussock Grass
<i>Rhagodia condolleana</i> spp <i>condolleana</i>	Sea Blite

<i>Tetragonia tetraganoides</i>	Warrigal Greens
<i>Themeda australis</i>	Kangaroo Grass

12. SITE WEED LIST

Noxious	Other	Control Method
Cortaderia selloana (Pampass Grass)		Hand dig smaller plants or spray with glyphosate at ratio of 1:75
Lantana camara		Cut and paint stump
	<i>Acetosa sagittata</i> (Turkey Rhubarb)	Spot spray with glyphosate at ratio of 1:100 during spring – summer period, bag all seeds.
	<i>Asparagus densiformis</i> (Asparagus Fern)	Manually remove the crown of the plant directly under the plant or spot spray with Metsulfron Methyl + wetting agent
	<i>Brophyllum delagoense</i> (Mother of Millions)	Hand pull small patches or spray larger areas with a mixture of Metsulfron Methyl and Glyphosate + Wetting agent
	<i>Crassula ovata</i> (Stone Crop)	Hand dig out smaller patches or spot spray with Metsulfron Methyl + wetting agent
	<i>Delairea odorata</i> (Cape Ivy)	Spot spray with glyphosate at ratio of 1:100
	<i>Erythrina x sykesii</i> (Coral Tree)	Large trees need to be drilled and injected with neat glyphosate smaller regrowth can be treated using the cut stump method
	<i>Leonurus sibiricus</i> (Lions Tail)	Cut and paint larger plants or hand pull smaller ones
	<i>Nephrolepis cordifolia</i> (Fishbone Fern)	Hand dig out smaller infestation or spray larger ones can be sprayed with Metsulfron Methyl + wetting agent
	<i>Ochna serrulata</i> (Micky Mouse Plant)	Hand pull small plants but anything over 100 mm should be cut and painted
	<i>Senecio angulatus</i> (Climbing groundsel)	Small infestation can be hand dug out and need to be bagged and removed, larger infestations can be sprayed with Metsulfron Methyl + wetting agent
	<i>Tradescantia fluminensis</i> (Wandering Jew)	Rake and remove small patches or spot spray larger ones with Metsulfron Methyl + wetting agent

ATTACHMENT 1 – RIVER BANK TRANSECTS

1. Transects of Section 1 & 2 of the River Road – Shoalhaven River Bank

DO NOT remove or spray weeds from first 2 metres of the toe/base of the bank to avoid erosion

- DO NOT** remove large areas of weeds from steeper sections of the river bank (see attached bank transects for details).
- DO NOT** plant large trees on the steeper slopes of the bank, only shrubs and groundcovers (see attached bank transects for details).

2. Transects of section 3 of the River Road – Shoalhaven River Bank

- Do not remove any large woody weeds such as Coral Trees or Lantana from steep sections of the bank without Council approval.
- **DO NOT** plant large trees on the steeper slopes of the bank, only shrubs and groundcovers (see attached bank transects for details).

ATTACHMENT 2 - Group support and skill development needs. This information helps to identify gaps that may exist between what the group require to function effectively and what the group has available. **This focuses on the group, overall, not individual members.**

<i>Tick one box only</i>	We are absolute beginners – don't know a great deal	We know a bit – enough to get by most of the time	We know quite a lot – and we know when to seek help	There's probably not much more we can learn on this	Comments
OH&S – develop and follow risk assessment					
Develop and/ or monitor Action Plan					
Plant identification – local native plants					
Weed identification & control methods					
Bush regeneration methods					
Seed collection & propagation					
Group planning and decision making					
Managing neighbour relations					
Community education – schools, neighbours etc					
Volunteer/ group member recruitment					
Preparing grant applications					

List below the 10 most common plants that are indigenous to the area.	List below the 10 most common plants that are <i>not</i> indigenous to the area.
Can all of the group regular volunteers identify these? YES NO circle one	Can all of the group regular volunteers identify these? YES NO circle one

Bushcare Group Name **Coordinator Name** **Signature** **Date** .../.../.....