



## ULLADULLA RESERVES BUSHCARE ACTION PLAN

**Document Number:** D12/109137 • **Adopted:** 23/11/2012 • **Minute Number:** MIN12.1296  
• **File:** 26281E • **Produced By:** City Services & Operations Group  
• **Review Date:** 23/10/2015

### CONTACT INFORMATION

<b>Group Name:</b>	Ulladulla Reserves Bushcare Group
<b>Contact:</b>	Clive Millen
<b>Reserve Name:</b>	Rotary Park
<b>Reserve No:</b>	SUL944
<b>Land Tenure:</b>	Crown TM/CC

### 1. BUSHCARE GROUP GOALS

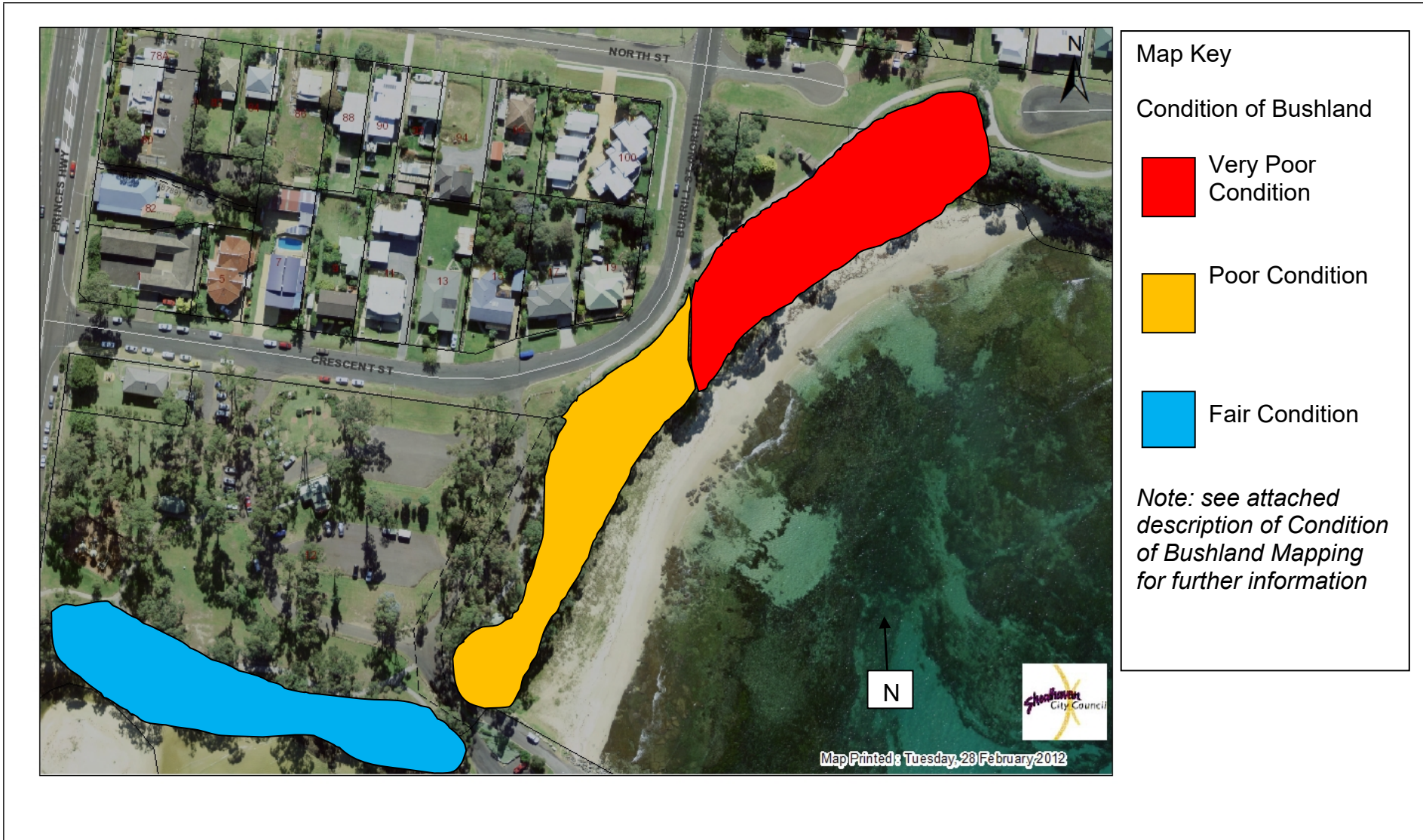
<p><b>Aim:</b> To protect and preserve the remnant bushland edges surrounding the parkland in Rotary Park, Ulladulla Harbour.</p> <p><b>Objectives:</b> Reduce weed inundation, target weeding Blackberry, Asparagus Fern, Senna, and Mirror Bush in resilient bushland zones away from cliff edges. Increase community awareness in Bushcare activities with on ground participation and communication amongst local residents &amp; visitors to site. Removal of household rubbish.</p>
---

**2. SHOALHAVEN BUSHCARE GROUP ACTIVITIES TABLE (to be in conjunction with attached site map)**

**NOTE: Priority should be rated as H = High (within 12 months); M = Medium (1-3 years); L = Low**

GROUP ACTION	PRIORITY	METHOD	TIME
Target weeding of Blackberry, Asparagus Fern, Senna and Mirror Bush.	H	<ul style="list-style-type: none"> <li>• Hand remove, cut &amp; paint blackberry with glyphosate</li> <li>• Hand remove Asparagus fern, crowning out rhizome</li> <li>• Cut &amp; paint Senna, bag seeds, scrape and paint or frill Mirror bush with glyphosate</li> </ul>	On going
<ul style="list-style-type: none"> <li>• Ongoing removal of household rubbish.</li> <li>• Letter box/ leaflet drop in neighbourhood regarding garden waste dumping.</li> <li>• Replacement planting following initial weed control.</li> </ul>	H	<ul style="list-style-type: none"> <li>• Bag litter separately to greenwaste</li> <li>• Council to supply “a Bush Friendly Neighbour” brochure for group to distribute</li> <li>• Use species from suggested revegetation species list</li> </ul>	On going  2012/13
Council Noxious Weed Unit to annually spray infestations of Blackberry and Pampass Grass.	H	High volume spray with registered herbicide	2012,13,14

### 3. ULLADULLA RESERVES BUSHCARE GROUP ACTION PLAN MAP



#### 4. BUSHCARE GROUP WHS & EQUIPMENT REQUIREMENTS

Type of Activity	Yes	SWMS name included
Manual weed control (cut & paint, scrape and paint etc)	√	SWMSNR040 Weed Control Activities
Chemical control (spraying of herbicides)	√	SWMSNR040 Weed Control Activities
Planting	√	SWMSNRO030 Planting Propagation & Seed Collection
Minor construction (walking track, fencing, outdoor furniture)		
Propagation & seed collection		
Education (school groups, field days etc)		
Other		

#### 5. COUNCIL SUPPORT

- a. Technical advice and support
- b. Provision of PPE equipment
- c. Supply tools, herbicide and materials within the constraints of budget
- d. Administration support
- e. Assistance with grant application, administration and management.
- f. Graphic design and printing assistance
- g. Assistance with facilitation and negotiation with third parties
- h. Council to assist with weed control, containing disturbed weed zones adjacent to stairs at northern end of beach and along steep cliffs behind beach

#### 6. HAS A SITE HAZARD AND RISK ASSESSMENT BEEN COMPLETED FOR THE BUSHCARE SITE?

Yes            √

**7. LIST THE PERSONAL PROTECTION EQUIPMENT REQUIRED FOR VOLUNTEERS WHILST WORKING ON THE SITE**

<b>PPE Equipment Required</b>	<b>Date issued</b>
First Aid Kit	N/A
Gloves	N/A
Sunscreen	N/A
Insect repellent	N/A

**8. POSSIBLE FUTURE FUNDING**

<b>Project</b>	<b>Funding source</b>
Assistance with weed control	Shoalhaven City Council

**9. PLEASE LIST OTHER LOCAL OR REGIONAL MANAGEMENT PLANS OR STRATEGIES THAT THIS PLAN RELATES TO**

<b>Name of document</b>	<b>Year it was produced</b>	<b>Produced by</b>
Foreshore Reserve Policy	2004	Natural Resources & Floodplain Unit, City Services & Operations, Shoalhaven City Council

## 10. RECOMMENDED PLANTING/REVEGETATION SPECIES LIST

OVERSTOREY TREES	
Botanical	Common
<i>Allocasuarina glauca</i>	Swamp Sheoak
<i>Banksia integrifolia</i>	Coastal Banksia
<i>Eucalyptus botrioides</i>	Bangalay
<i>Eucalyptus gummifera</i>	Bloodwood
SHRUBS	
Botanical	Common
<i>Acacia binervia</i>	Hickory Wattle
<i>Acacia longifolia</i>	Wattle
<i>Banksia spinulosa</i>	Hair Pin Banksia
<i>Dodonea triquetra</i>	Hop Bush
<i>Melaleuca hypericifolia</i>	Ulladulla Beakon
<i>Pultanea daphnoides</i>	Egg And Bacon Pea
<i>Westringia fruticosa</i>	Native Rosemary
UNDERSTOREY (grasses, herbs, climbers)	
Botanical	Common
<i>Dianella caerulea</i>	Dianella
<i>Eustrephis latifolius</i>	Wombat Berry
<i>Imperata cylindrica</i>	Blady Grass
<i>Lomandra longifolia</i>	Spiny Mat Rush
<i>Themeda australis</i>	Kangaroo Grass

## 11. SITE WEED LIST

Noxious	Environmental	Control Method
Cortaderia spp (Pampas Grass)		Cut and bag seed head, spray glyphosate into ligule
Rubus fruticosus (Blackberry)		Cut and paint with glyphosate/ hand dig
	Acetosa saggitata (Turkey Rhubarb)	Hand dig, removing tuber, bag all propagule
	Agapanthus praecox (Agapanthus)	Hand dig, removing rhizome, bag all propagule
	Asparagus aethiopicus (Asparagus Fern)	Hand removal of rhizome, bag all propagule
	Buffalo grass, Kikuyu, Cobblers Pegs, Fleabane	Spot spray 1:100 glyphosate
	Canna indica (Canna Lily)	Hand removal of rhizome, bag all propagule
	Coprosma repens	Scrape and paint/ frill/ drill with glyphosate

	(NZ Mirror Bush)	
	Creeping Charlie (succulent garden escapee)	Hand weed/spray large infestations, using extra surfactant
	Ligustrum spp (Privet)	Cut & paint with glyphosate/ hand pull seedlings
	Lilium formosan (Formosan Lily)	Cut & paint with glyphosate/cut off flowers and bag
	Lonicera japonica (Honeysuckle)	Hand weed/ scrape and paint with glyphosate/spray large infestations
	Odontonema tubaeforme (red flowering garden escapee)	Hand weed/spray large infestations
	Senna pendula (Cassia)	Cut & paint with glyphosate/ hand pull seedlings

## 12. BUSHCARE SITE SPECIES LIST

<b>OVERSTOREY TREES</b>	
<b>Botanical</b>	<b>Common</b>
<i>Acmena smithii</i>	Lilypilly
<i>Allocasuarina glauca</i>	Swamp Sheoak
<i>Banksia integrifolia</i>	Coastal Banksia
<i>Eucalyptus botrioides</i>	Bangalay
<i>Eucalyptus gummifera</i>	Bloodwood
<i>Syncarpia glomulifera</i>	Turpentine
<b>SHRUBS</b>	
<b>Botanical</b>	<b>Common</b>
<i>Acacia binervia</i>	Hickory Wattle
<i>Acacia longifolia</i>	Wattle
<i>Acacia paramatensis</i>	Black Wattle
<i>Banksia spinulosa</i>	Hair Pin Banksia
<i>Callitris muelleri</i>	Native Cypress
<i>Dodonea triquetra</i>	Hop Bush
<i>Goodenia ovata</i>	Hop Goodenia
<i>Melaleuca hypericifolia</i>	Ulladulla Beakon
<i>Omalanthus popuifolius</i>	Bleeding Heart
<i>Pultanea daphnoides</i>	Egg And Bacon Pea
<i>Westringia fruticosa</i>	Native Rosemary
<i>Zieira smithi</i>	Sandfly Zieria
<b>UNDERSTOREY (grasses, herbs, orchids)</b>	
<b>Botanical</b>	<b>Common</b>
<i>Adiantum aethiopicum</i>	Maiden Hair Fern
<i>Dianella caerulea</i>	Dianella
<i>Gahnia spp</i>	Saw Sedge

<i>Imperata cylindrica</i>	Blady Grass
<i>Lomandra longifolia</i>	Spiny Mat Rush
<i>Pteridium esculentum</i>	Bracken
<i>Themeda australis</i>	Kangaroo Grass
<b>UNDERSTOREY (vines &amp; climbers)</b>	
<b>Botanical</b>	<b>Common</b>
<i>Eustrephis latifolius</i>	Wombat Berry
<i>Geitnoplesium cymosum</i>	Scrambling Lily
<i>Hardenbergia violaceae</i>	Happy Wanderer
<i>Hibbertia scandens</i>	Guinea Flower
<i>Kennedia rubicunda</i>	Running Postman

**Bushcare Group Name:** .....

**Coordinator Name:**.....

**Signature:** .....

**Date:** ...../...../.....



## Condition of Bushland Mapping

### RED            VERY POOR CONDITION

- Dominated by weeds (ie more than 80% weeds in proportion to natives);
- Degradation has been severe and/or continual;
- Natural regeneration of native species is unlikely;
- Restoration of the site will generally require revegetation.

### ORANGE    POOR CONDITION

- Weeds dominate, BUT
- There is potential for natural regeneration of native species;
- Continued weed removal is necessary over time while native species re-establish;
- Planting generally not necessary.

### BLUE            FAIR CONDITION

- Native species dominate, but weeds invading the site and may constitute 10-40% of the vegetation;
- Weed removal on a regular basis will allow the native species to dominate the vegetation.

### GREEN        GOOD CONDITION

- These areas are basically weed free;
- Occasional weeds may be found and must be removed.

This mapping system is a quick method of assessment that condenses information to produce 4 zonings of bushland based on the integrity of the native vegetation and whether weeds or natives are the dominant species.

COLOUR CODE	CONDITION OF BUSHLAND	DESCRIPTION	INTERVENTION REQUIRED
Green	Good	Virtually weed free - healthy native community (0-10% weed)	1. Minimal
Blue	Fair	Minor infestation of weeds (10-30% weed)	2. Low
Orange	Poor	<b>Severely infested - regeneration of native species being suppressed</b> (30-70% weed)	3. Medium
Red	Very Poor	Bushland replaced by exotic species OR only mature specimens of highest stratum remain - no seedlings or saplings due to infestation by exotics (70-100% weed)	4. Medium or High

The zones are aligned to overall weed load with each level indicative of the level of disturbance and the amount of intervention required to restore the vegetation. The degree of intervention required is summarised in the following table.

LEVEL OF INTERVENTION	DESCRIPTION
Minimal (Green) Level 1	Resilience high. Removal of scattered weed & prevention of future impacts may be required
Low (Blue) Level 2	Resilience high to medium. Removal of scattered weed and active management of impact/s required
Medium (Orange) Level 3	Resilience impaired but existent. Removal of weeds & removal of impact required
High (Red) Level 4	Resilience low or seriously limited - may need reconstruction, fabrication or reinstatement to approximate the original ecosystem