



**Indicative Cost Plan  
Nowra Car Park**

Azeem Bhola  
Cost Manager

Turner & Townsend  
Level 1, Empire Chambers  
1 University Avenue  
Canberra City  
ACT 2601

t: +61 (0)2 6245 1000

e: [azeem.bhola@turntown.com](mailto:azeem.bhola@turntown.com)

w: [turnerandtowntsend.com](http://turnerandtowntsend.com)

Nowra Car Park

June 8<sup>th</sup>



CONTENTS

1	INTRODUCTION	1
2	INTENT	1
3	INFORMATION USED	1
4	ASSUMPTIONS	2
5	EXCLUSIONS	3
6	APPENDIX A – INDICATIVE COST PLAN	4

Rev	Originator	Approved	Date
0	Azeem Bhola	Matt Figgis	07.06.2012
<p>© Turner &amp; Townsend Cost Management. All rights reserved June 7<sup>th</sup>. This document is expressly provided to and solely for the use of GHD and their client and must not be quoted from, referred to, used by or distributed to any other party without the prior consent of Turner &amp; Townsend Cost Management who accept no liability of whatsoever nature for any use by any other party.</p>			
<p>F:\CBR\PROJECTS\CAXXXX - NOWRA CAR PARK\2000 COSTPLAN\2200 COST PLANS\2210 INDICATIVE CP\2211 COST PLAN FILES\NOWRA CAR PARK.DOC</p>			

## 1 Introduction

Turner & Townsend have been engaged by GHD Architects to provide an indicative estimate for the construction of a car park at Worrigeer Street .

## 2 Intent

The intent of this report is to advise of the likely cost of construction of the car park with three alternative options varying number of floors and extent of cladding .

The budget should be read in conjunction with the drawings and information as outlined in this report.

Based on all the drawings and information provided by GHD our Estimate, excluding GST :

- 1. Car park Constructio Grd to Level 4 - \$11.1m**
- 2. Car park Constructio Grd to Level 4 without cladding - \$9.9m**
- 3. Car park Constructio Grd to Level 3 with cladding - \$8.7m**
- 4. Car park Constructio Grd to Level 3 without cladding - \$7.7m**

## 3 Information Used

The following drawings / information have been used to prepare this report:

Drawing /Description	Date Received
Site Plan (SK 110)	6.06.2012
Typical Layout (SK 120)	6.06.2012
Building Sections (SK 140)an	6.06.2012
Elevations East /West (SK 151)	6.06.2012

Elevations North /South (SK 150)	6.06.2012
3D Isometric View (SK 260)	6.06.2012

## 4 Assumptions

- Foundation footings are of size 3500x3500x900mm
- Broom Finish to concrete Slabs on all floors
- All stairs including perimeter wall to stairwell be cast in concrete .
- Grd floor slab is to be 120mm
- Suspended slab is 200mm thk
- Beams for slabs are 2000mm wide and 400mm deep
- Sheet piling is excluded for shoring level change of three meters at ground floor
- Reinforcement ratios for Foundation footing is 100Kg/m<sup>3</sup>, Suspended Slab is 250kg/m<sup>3</sup> and for Columns is 200kg/m<sup>3</sup>.
- Curtain Walling is Lightweight louvered perforated metal panels .
- Extent of earthworks as per provided quantity by 1350m<sup>3</sup> .
- Power and Lighting costs as per provided by GHD
- All rates as per current market rate .
- No abnormal ground conditions .
- No diversion of existing services crossing or abutting the site .
- Incoming mains services are sufficient for the power requirements of the car park
- No demolition Works
  - Preliminaries and OH&P 10%
  - Contingency 5%

## 5 Exclusions

- Fire Protection
- Smoke Detectors
- Sanitary Plumbing
- Air Conditioning
- Bored Pile foundation
- Demolition
- Removal of contaminated land (if any )
- Security costs, CCTV .
- Out of hours work
- Professional fees / Certification costs
- Scope not expressly described in the cost plan backup
- Escalation beyond 3Q12
- GST

–

Appendix A – Indicative Cost Plan Options 1-4 below .

## Trade Summary

<b>Project:</b> Car Park Construction	<b>Details:</b> Nowra Car Park
<b>Building:</b> Nowra Car Park	

Code	Description	Quantity	Unit	Rate	Total
	<b>Substructure</b>				1,215,816
	<b>Columns</b>				287,340
	<b>Suspended Slab</b>				5,797,782
	<b>Staircases</b>				267,830
	<b>Ramps Grd to Level 4</b>				148,580
	<b>Perimeter Crash Barrier</b>				229,000
	<b>External Wall Cladding</b>				1,080,600
	<b>Doors</b>				14,400
	<b>Wall Finishes</b>				5,550
	<b>Floor Finishes</b>				208,312
	<b>Fitments</b>				199,200
	<b>Electric Lighting</b>				174,600
	<b>Power Supply</b>				40,000
	<b>External Concrete Path</b>				52,500
	<b>Sub Total</b>				9,721,510
	<b>Preliminaries 10%</b>				972,151
	<b>Contingencies 5%</b>				486,075
	<b>Total</b>				11,179,736

## Trade Detail

Project: Car Park Construction

Details: Nowra Car Park

Building: Nowra Car Park

Code	Description	Quantity	Unit	Rate	Subtotal
------	-------------	----------	------	------	----------

## Substructure

<b>Grd Floor Slab</b>					
	Bulk Excavation and Cart away	1,350	m3	60.00	81,000.00
	Level Compact Grd Floor	4,481	m2	15.00	67,219
	Excavation for footings	916	m3	151.00	138,316
	Reinforcement to Footings	92	t	2,800.00	257,600
	Concrete to Footings	916	m3	286.00	261,976
	Sand Bed	4,481	m2	10.00	44,813
	Water Proof Membrane	4,481	m2	15.00	67,219
	Expansion Joints	360	m	20.00	7,200
	Mesh Reinforcement to Slab	4,481	m2	20.00	89,625
	Formwork to Edge of slab	292	m	43.00	12,561
	Concrete to Slab	538	m3	300.00	161,400
	Finish and Cure Slab	4,481	m2	6.00	26,888

## Substructure

## Columns

<b>Columns Grd Floor (3.0)</b>					
	Formwork to rectangular columns 600x250.	271	m2	120.00	32,520
	Reinforcement in Columns (200kg/m3)	5	t	2,800.00	14,000
	Concrete in Columns	24	m3	282.00	6,768
<b>Columns Grd Floor (2.8)</b>					
	Formwork to rectangular columns 600x250	143	m2	120.00	17,160
	Reinforcement in Columns (200kg/m3)	3	t	2,800.00	8,400
	Concrete in Columns	13	m3	282.00	3,666
<b>Columns Half Slab (2.8)</b>					
	Formwork to rectangular columns 600x250	253	m2	120.00	30,360
	Reinforcement in Columns (200kg/m3)	5	t	2,800.00	14,000
	Concrete in Columns	23	m3	282.00	6,486
<b>Columns Level 2 (2.8)</b>					
	Formwork to rectangular columns 600x250	396	m2	120.00	47,520
	Reinforcement in Columns (200kg/m3)	7	t	2,800.00	19,600
	Concrete in Columns	35	m3	282.00	9,870
<b>Columns Level 3 (2.8)</b>					
	Formwork to rectangular columns 600x250	396	m2	120.00	47,520
	Reinforcement in Columns (200kg/m3)	7	t	2,800.00	19,600
	Concrete in Columns	35	m3	282.00	9,870



## Trade Detail

Project: Car Park Construction

Details: Nowra Car PARK

Building: Nowra Car Park

Code	Description	Quantity	Unit	Rate	Subtotal
------	-------------	----------	------	------	----------

## Columns

(Continued)

## Columns

## Suspended Slab

<b>Suspended Half Slab Level 1</b>					
	Formwork to soffit of suspended slab and beams	2,580	m2	100.00	257,967
	Formwork to edge of slab perimeter	292	m	43.00	12,561
	Reinforcement in slabs and beams (250kg/m3)	209	t	2,800.00	585,200
	Concrete to slab and beams	836	m3	260.00	217,360
	Finish and cure slab	2,580	m2	10.00	25,797
<b>Suspended Slab Level 2</b>					
	Formwork to soffit of slab and beams	4,481	m2	100.00	448,126
	Formwork face of beam and edge of slab	292	m	43.00	12,561
	Reinforcement in slabs and beams (250kg/m3)	276	t	2,800.00	773,500
	Concrete to slab and beams	1,105		260.00	287,300
	Finish and cure slab	4,481		10.00	44,813
<b>Suspended Slab Level 3</b>					
	Formwork to soffit of slab and beams	4,481	m2	100.00	448,126
	Formwork face of beam and edge of slab	292	m	43.00	12,561
	Reinforcement in slabs and beams (250kg/m3)	276	t	2,800.00	773,500
	Concrete to slab and beams	1,105		260.00	287,300
	Finish and cure slab	4,481		10.00	44,813
<b>Suspended Slab Level 4</b>					
	Formwork to soffit of slab and beams	4,481	m2	100.00	448,126
	Formwork face of beam and edge of slab	292	m	43.00	12,561
	Reinforcement in slabs and beams (250kg/m3)	276	t	2,800.00	773,500
	Concrete to slab and beams	1,105		260.00	287,300
	Finish and cure slab	4,481		10.00	44,813

## Suspended Slab

## Staircases

	Formwork to stairs /perimeter wall	1,039	m2	100.00	103,900
	Concrete to Stairs /perimeter wall	224	m3	300.00	67,200
	Reinforcement to staircase	26	t	2,800.00	74,010
	Balustrades	60	m	162.00	9,720

## Trade Detail

Project: Car Park Construction		Details: Nowra Car PARK			
Building: Nowra Car Park					
Code	Description	Quantity	Unit	Rate	Subtotal
<b>Staircases</b>					<i>(Continued)</i>
	Aluminium Canopy to stairwell roof .	52	m2	250.00	13,000
<b>Staircases</b>					
<b>Ramps Grd to Level 4</b>					
	<b>Ramp Grd to Level 4</b>				
	Formwork to ramps	478	m2	100.00	47,800
	Reinforcement to ramps	24	t	2,800.00	67,200
	Concrete to ramps	96	m3	300.00	28,800
	Finish and cure ramps	478	m2	10.00	4,780
<b>Ramps Grd to Level 4</b>					
<b>Perimeter Crash Barrier</b>					
	Crash Barrier	1,145	m	200.00	229,000
<b>Perimeter Crash Barrier</b>					
<b>External Wall Cladding</b>					
	Curtail walling louvered perforated metal panels	2,161	m2	500.00	1,080,600
<b>External Wall Cladding</b>					
<b>Doors</b>					
	Solid core doors inclusive of hardware for eastrances into srairwell	18	no	800.00	14,400
<b>Doors</b>					
<b>Wall Finishes</b>					
	Paint to Stairwell walls	370	m2	15.00	5,550
<b>Wall Finishes</b>					
<b>Floor Finishes</b>					
	Line markings	16,024	m2	5.00	80,120
	Sealer and paint to concrete floor	16,024	m2	8.00	128,192
<b>Floor Finishes</b>					
<b>Fitments</b>					
	Wheel Stops	512	no	350.00	179,200
	Sundry carpark fitments and signage	1	item	20,000.00	20,000
<b>Fitments</b>					
<b>Electric Lighting</b>					
	Top floor lighting	1	item	75,000.00	75,000
	Lighting Grd , Level 2, Level 3	3	item	28,000.00	84,000
	Lighting Half Suspended Floor	1	item	15,600.00	15,600
<b>Electric Lighting</b>					
<b>Power Supply</b>					
	Power Supply and distribution	1	item	40,000.00	40,000
<b>Power Supply</b>					
<b>External Concrete Path</b>					

### Trade Detail

<b>Project:</b> Car Park Construction	<b>Details:</b> Nowra Car Park
<b>Building:</b> Nowra Car Park	

Code	Description	Quantity	Unit	Rate	Subtotal
------	-------------	----------	------	------	----------

**External Concrete Path**

*(Continued)*

	External conc Path (1m wide )	210	m	250.00	52,500
--	-------------------------------	-----	---	--------	--------

**External Concrete Path**

## Trade Summary

**Project:** Car Park Construction

**Details:** Nowra Car Park -W/O Cladding Option 2

**Building:** Nowra Car Park

Code	Description	Quantity	Unit	Rate	Total
	<b>Substructure</b>				1,215,816
	<b>Columns</b>				287,340
	<b>Suspended Slab</b>				5,797,782
	<b>Staircases</b>				267,830
	<b>Ramps Grd to Level 4</b>				148,580
	<b>Perimeter Crash Barrier</b>				229,000
	<b>External Wall Cladding (Excluded)</b>				0
	<b>Doors</b>				14,400
	<b>Wall Finishes</b>				5,550
	<b>Floor Finishes</b>				208,312
	<b>Fitments</b>				199,200
	<b>Electric Lighting</b>				174,600
	<b>Power Supply</b>				40,000
	<b>External Concrete Path</b>				52,500
	<b>Sub Total</b>				8,640,910
	<b>Preliminaries 10%</b>				864,091
	<b>Contingencies 5%</b>				432,045
	<b>Total</b>				9,937,046

## Trade Detail

Project: Car Park Construction

Details: Nowra Car Park -W/O Cladding Option 2

Building: Nowra Car Park

Code	Description	Quantity	Unit	Rate	Subtotal
------	-------------	----------	------	------	----------

## Substructure

<b>Grd Floor Slab</b>					
	Bulk Excavation and Cart away	1,350	m3	60.00	81,000.00
	Level Compact Grd Floor	4,481	m2	15.00	67,219
	Excavation for footings	916	m3	151.00	138,316
	Reinforcement to Footings	92	t	2,800.00	257,600
	Concrete to Footings	916	m3	286.00	261,976
	Sand Bed	4,481	m2	10.00	44,813
	Water Proof Membrane	4,481	m2	15.00	67,219
	Expansion Joints	360	m	20.00	7,200
	Mesh Reinforcement to Slab	4,481	m2	20.00	89,625
	Formwork to Edge of slab	292	m	43.00	12,561
	Concrete to Slab	538	m3	300.00	161,400
	Finish and Cure Slab	4,481	m2	6.00	26,888

## Substructure

## Columns

<b>Columns Grd Floor (3.0)</b>					
	Formwork to rectangular columns 600x250.	271	m2	120.00	32,520
	Reinforcement in Columns (200kg/m3)	5	t	2,800.00	14,000
	Concrete in Columns	24	m3	282.00	6,768
<b>Columns Grd Floor (2.8)</b>					
	Formwork to rectangular columns 600x250	143	m2	120.00	17,160
	Reinforcement in Columns (200kg/m3)	3	t	2,800.00	8,400
	Concrete in Columns	13	m3	282.00	3,666
<b>Columns Half Slab (2.8)</b>					
	Formwork to rectangular columns 600x250	253	m2	120.00	30,360
	Reinforcement in Columns (200kg/m3)	5	t	2,800.00	14,000
	Concrete in Columns	23	m3	282.00	6,486
<b>Columns Level 2 (2.8)</b>					
	Formwork to rectangular columns 600x250	396	m2	120.00	47,520
	Reinforcement in Columns (200kg/m3)	7	t	2,800.00	19,600
	Concrete in Columns	35	m3	282.00	9,870
<b>Columns Level 3 (2.8)</b>					
	Formwork to rectangular columns 600x250	396	m2	120.00	47,520
	Reinforcement in Columns (200kg/m3)	7	t	2,800.00	19,600
	Concrete in Columns	35	m3	282.00	9,870

## Trade Detail

Project: Car Park Construction

Details: Nowra Car Park -W/O Cladding Option 2

Building: Nowra Car Park

Code	Description	Quantity	Unit	Rate	Subtotal
------	-------------	----------	------	------	----------

## Columns

(Continued)

## Columns

## Suspended Slab

<b>Suspended Half Slab Level 1</b>					
	Formwork to soffit of suspended slab and beams	2,580	m2	100.00	257,967
	Formwork to edge of slab perimeter	292	m	43.00	12,561
	Reinforcement in slabs and beams (250kg/m3)	209	t	2,800.00	585,200
	Concrete to slab and beams	836	m3	260.00	217,360
	Finish and cure slab	2,580	m2	10.00	25,797
<b>Suspended Slab Level 2</b>					
	Formwork to soffit of slab and beams	4,481	m2	100.00	448,126
	Formwork face of beam and edge of slab	292	m	43.00	12,561
	Reinforcement in slabs and beams (250kg/m3)	276	t	2,800.00	773,500
	Concrete to slab and beams	1,105		260.00	287,300
	Finish and cure slab	4,481		10.00	44,813
<b>Suspended Slab Level 3</b>					
	Formwork to soffit of slab and beams	4,481	m2	100.00	448,126
	Formwork face of beam and edge of slab	292	m	43.00	12,561
	Reinforcement in slabs and beams (250kg/m3)	276	t	2,800.00	773,500
	Concrete to slab and beams	1,105		260.00	287,300
	Finish and cure slab	4,481		10.00	44,813
<b>Suspended Slab Level 4</b>					
	Formwork to soffit of slab and beams	4,481	m2	100.00	448,126
	Formwork face of beam and edge of slab	292	m	43.00	12,561
	Reinforcement in slabs and beams (250kg/m3)	276	t	2,800.00	773,500
	Concrete to slab and beams	1,105		260.00	287,300
	Finish and cure slab	4,481		10.00	44,813

## Suspended Slab

## Staircases

	Formwork to stairs /perimeter wall	1,039	m2	100.00	103,900
	Concrete to Stairs /perimeter wall	224	m3	300.00	67,200
	Reinforcement to staircase	26	t	2,800.00	74,010
	Balustrades	60	m	162.00	9,720

## Trade Detail

Project: Car Park Construction

Details: Nowra Car Park -W/O Cladding Option 2

Building: Nowra Car Park

Code	Description	Quantity	Unit	Rate	Subtotal
------	-------------	----------	------	------	----------

## Staircases

(Continued)

	Aluminium Canopy to stairwell roof .	52	m2	250.00	13,000
--	--------------------------------------	----	----	--------	--------

## Staircases

## Ramps Grd to Level 4

	<b>Ramp Grd to Level 4</b>				
	Formwork to ramps	478	m2	100.00	47,800
	Reinforcement to ramps	24	t	2,800.00	67,200
	Concrete to ramps	96	m3	300.00	28,800
	Finish and cure ramps	478	m2	10.00	4,780

## Ramps Grd to Level 4

## Perimeter Crash Barrier

	Crash Barrier	1,145	m	200.00	229,000
--	---------------	-------	---	--------	---------

## Perimeter Crash Barrier

## Doors

	Solid core doors inclusive of hardware for entrances into stairwell	18	no	800.00	14,400
--	---	----	----	--------	--------

## Doors

## Wall Finishes

	Paint to Liftwell walls	370	m2	15.00	5,550
--	-------------------------	-----	----	-------	-------

## Wall Finishes

## Floor Finishes

	Line markings	16,024	m2	5.00	80,120
	Sealer and paint to concrete floor	16,024	m2	8.00	128,192

## Floor Finishes

## Fitments

	Wheel Stops	512	no	350.00	179,200
	Sundry carpark fitments and signage	1	item	20,000.00	20,000

## Fitments

## Electric Lighting

	Top floor lighting	1	item	75,000.00	75,000
	Lighting Grd , Level 2, Level 3	3	item	28,000.00	84,000
	Lighting Half Suspended Floor	1	item	15,600.00	15,600

## Electric Lighting

## Power Supply

	Power Supply and distribution	1	item	40,000.00	40,000
--	-------------------------------	---	------	-----------	--------

## Power Supply

## External Concrete Path

	External conc Path (1m wide )	210	m	250.00	52,500
--	-------------------------------	-----	---	--------	--------

## External Concrete Path

## Trade Summary

<b>Project:</b> Car Park Construction	<b>Details:</b> Nowra Car Park -3 levels with cladding
<b>Building:</b> Nowra Car Park	Option 3

Code	Description	Quantity	Unit	Rate	Total
	<b>Substructure</b>				1,215,816
	<b>Columns</b>				210,350
	<b>Suspended Slab</b>				4,231,483
	<b>Staircases</b>				226,115
	<b>Ramps Grd to Level 3</b>				111,490
	<b>Perimeter Crash Barrier</b>				170,600
	<b>External Wall Cladding</b>				880,000
	<b>Doors</b>				9,600
	<b>Wall Finishes</b>				4,455
	<b>Floor Finishes</b>				150,059
	<b>Fitments</b>				147,750
	<b>Electric Lighting</b>				146,600
	<b>Power Supply</b>				40,000
	<b>External Concrete Path</b>				52,500
	<b>Sub Total</b>				7,596,818
	<b>Preliminaries 10%</b>				759,682
	<b>Contingencies 5%</b>				379,841
	<b>Total</b>				8,736,341



## Trade Detail

**Project:** Car Park Construction  
**Building:** Nowra Car Park

**Details:** Nowra Car Park -3 levels with cladding  
Option 3

Code	Description	Quantity	Unit	Rate	Subtotal
------	-------------	----------	------	------	----------

## Substructure

<b>Grd Floor Slab</b>					
	Bulk Excavation and Cart away	1,350	m3	60.00	81,000.00
	Level Compact Grd Floor	4,481	m2	15.00	67,219
	Excavation for footings	916	m3	151.00	138,316
	Reinforcement to Footings	92	t	2,800.00	257,600
	Concrete to Footings	916	m3	286.00	261,976
	Sand Bed	4,481	m2	10.00	44,813
	Water Proof Membrane	4,481	m2	15.00	67,219
	Expansion Joints	360	m	20.00	7,200
	Mesh Reinforcement to Slab	4,481	m2	20.00	89,625
	Formwork to Edge of slab	292	m	43.00	12,561
	Concrete to Slab	538	m3	300.00	161,400
	Finish and Cure Slab	4,481	m2	6.00	26,888

## Substructure

## Columns

<b>Columns Grd Floor (3.0)</b>					
	Formwork to rectangular columns 600x250.	271	m2	120.00	32,520
	Reinforcement in Columns (200kg/m3)	5	t	2,800.00	14,000
	Concrete in Columns	24	m3	282.00	6,768
<b>Columns Grd Floor (2.8)</b>					
	Formwork to rectangular columns 600x250	143	m2	120.00	17,160
	Reinforcement in Columns (200kg/m3)	3	t	2,800.00	8,400
	Concrete in Columns	13	m3	282.00	3,666
<b>Columns Half Slab (2.8)</b>					
	Formwork to rectangular columns 600x250	253	m2	120.00	30,360
	Reinforcement in Columns (200kg/m3)	5	t	2,800.00	14,000
	Concrete in Columns	23	m3	282.00	6,486
<b>Columns Level 2 (2.8)</b>					
	Formwork to rectangular columns 600x250	396	m2	120.00	47,520
	Reinforcement in Columns (200kg/m3)	7	t	2,800.00	19,600
	Concrete in Columns	35	m3	282.00	9,870

## Columns

## Suspended Slab

<b>Suspended Half Slab Level 1</b>					
	Formwork to soffit of suspended slab and beams	2,580	m2	100.00	257,967
	Formwork to edge of slab perimeter	292	m	43.00	12,561

## Trade Detail

**Project:** Car Park Construction  
**Building:** Nowra Car Park

**Details:** Nowra Car Park -3 levels with cladding  
Option 3

Code	Description	Quantity	Unit	Rate	Subtotal
------	-------------	----------	------	------	----------

**Suspended Slab***(Continued)*

	Reinforcement in slabs and beams (250kg/m3)	209	t	2,800.00	585,200
	Concrete to slab and beams	836	m3	260.00	217,360
	Finish and cure slab	2,580	m2	10.00	25,797
<b>Suspended Slab Level 2</b>					
	Formwork to soffit of slab and beams	4,481	m2	100.00	448,126
	Formwork face of beam and edge of slab	292	m	43.00	12,561
	Reinforcement in slabs and beams (250kg/m3)	276	t	2,800.00	773,500
	Concrete to slab and beams	1,105		260.00	287,300
	Finish and cure slab	4,481		10.00	44,813
<b>Suspended Slab Level 3</b>					
	Formwork to soffit of slab and beams	4,481	m2	100.00	448,126
	Formwork face of beam and edge of slab	292	m	43.00	12,561
	Reinforcement in slabs and beams (250kg/m3)	276	t	2,800.00	773,500
	Concrete to slab and beams	1,105		260.00	287,300
	Finish and cure slab	4,481		10.00	44,813

**Suspended Slab****Staircases**

	Formwork to stairs /perimeter wall	865	m2	100.00	86,500
	Concrete to Stairs /perimeter wall	188	m3	300.00	56,400
	Reinforcement to staircase	22	t	2,800.00	62,115
	Balustrades	50	m	162.00	8,100
	Aluminium Canopy to stairwell roof .	52	m2	250.00	13,000

**Staircases****Ramps Grd to Level 3**

<b>Ramp Grd to Level 4</b>					
	Formwork to ramps	359	m2	100.00	35,900
	Reinforcement to ramps	18	t	2,800.00	50,400
	Concrete to ramps	72	m3	300.00	21,600
	Finish and cure ramps	359	m2	10.00	3,590

**Ramps Grd to Level 3****Perimeter Crash Barrier**

	Crash Barrier	853	m	200.00	170,600
--	---------------	-----	---	--------	---------

**Perimeter Crash Barrier****External Wall Cladding**

## Trade Detail

<b>Project:</b> Car Park Construction	<b>Details:</b> Nowra Car Park -3 levels with cladding Option 3
<b>Building:</b> Nowra Car Park	

Code	Description	Quantity	Unit	Rate	Subtotal
------	-------------	----------	------	------	----------

**External Wall Cladding***(Continued)*

	Curtail walling louvered perforated aluminium panels	1,760	m2	500.00	880,000
--	--	-------	----	--------	---------

**External Wall Cladding****Doors**

	Solid core doors inclusive of hardware for entrances into stairwell	12	no	800.00	9,600
--	---	----	----	--------	-------

**Doors****Wall Finishes**

	Paint to Liftwell walls	297	m2	15.00	4,455
--	-------------------------	-----	----	-------	-------

**Wall Finishes****Floor Finishes**

	Line markings	11,543	m2	5.00	57,715
	Sealer and paint to concrete floor	11,543	m2	8.00	92,344

**Floor Finishes****Fitments**

	Wheel Stops	365	no	350.00	127,750
	Sundry carpark fitments and signage	1	item	20,000.00	20,000

**Fitments****Electric Lighting**

	Top floor lighting	1	item	75,000.00	75,000
	Lighting Grd , Level 2, Level 3	2	item	28,000.00	56,000
	Lighting Half Suspended Floor	1	item	15,600.00	15,600

**Electric Lighting****Power Supply**

	Power Supply and distribution	1	item	40,000.00	40,000
--	-------------------------------	---	------	-----------	--------

**Power Supply****External Concrete Path**

	External conc Path (1m wide )	210	m	250.00	52,500
--	-------------------------------	-----	---	--------	--------

**External Concrete Path**

**Trade Summary**

**Project:** Car Park Construction  
**Building:** Nowra Car Park

**Details:** Nowra Car Park -3 levels w/o cladding  
Option 4

Code	Description	Quantity	Unit	Rate	Total
	<b>Substructure</b>				1,215,816
	<b>Columns</b>				210,350
	<b>Suspended Slab (3 levels Only)</b>				4,231,483
	<b>Staircases</b>				226,115
	<b>Ramps Grd to Level 3</b>				111,490
	<b>Perimeter Crash Barrier</b>				170,600
	<b>External Wall Cladding (Excluded)</b>				0
	<b>Doors</b>				9,600
	<b>Wall Finishes</b>				4,455
	<b>Floor Finishes</b>				150,059
	<b>Fitments</b>				147,750
	<b>Electric Lighting</b>				146,600
	<b>Power Supply</b>				40,000
	<b>External Concrete Path</b>				52,500
	<b>Sub Total</b>				6,716,818
	<b>Preliminaries 10%</b>				671,682
	<b>Contingencies 5%</b>				335,841
	<b>Total</b>				7,724,341

## Trade Detail

<b>Project:</b> Car Park Construction	<b>Details:</b> Nowra Car Park -3 levels w/o cladding
<b>Building:</b> Nowra Car Park	Option 4

Code	Description	Quantity	Unit	Rate	Subtotal
------	-------------	----------	------	------	----------

**Substructure**

<b>Grd Floor Slab</b>					
	Bulk Excavation and Cart away	1,350	m3	60.00	81,000.00
	Level Compact Grd Floor	4,481	m2	15.00	67,219
	Excavation for footings	916	m3	151.00	138,316
	Reinforcement to Footings	92	t	2,800.00	257,600
	Concrete to Footings	916	m3	286.00	261,976
	Sand Bed	4,481	m2	10.00	44,813
	Water Proof Membrane	4,481	m2	15.00	67,219
	Expansion Joints	360	m	20.00	7,200
	Mesh Reinforcement to Slab	4,481	m2	20.00	89,625
	Formwork to Edge of slab	292	m	43.00	12,561
	Concrete to Slab	538	m3	300.00	161,400
	Finish and Cure Slab	4,481	m2	6.00	26,888

**Substructure**

**Columns**

<b>Columns Grd Floor (3.0)</b>					
	Formwork to rectangular columns 600x250.	271	m2	120.00	32,520
	Reinforcement in Columns (200kg/m3)	5	t	2,800.00	14,000
	Concrete in Columns	24	m3	282.00	6,768
<b>Columns Grd Floor (2.8)</b>					
	Formwork to rectangular columns 600x250	143	m2	120.00	17,160
	Reinforcement in Columns (200kg/m3)	3	t	2,800.00	8,400
	Concrete in Columns	13	m3	282.00	3,666
<b>Columns Half Slab (2.8)</b>					
	Formwork to rectangular columns 600x250	253	m2	120.00	30,360
	Reinforcement in Columns (200kg/m3)	5	t	2,800.00	14,000
	Concrete in Columns	23	m3	282.00	6,486
<b>Columns Level 2 (2.8)</b>					
	Formwork to rectangular columns 600x250	396	m2	120.00	47,520
	Reinforcement in Columns (200kg/m3)	7	t	2,800.00	19,600
	Concrete in Columns	35	m3	282.00	9,870

**Columns**

**Suspended Slab (3 levels Only)**

<b>Suspended Half Slab Level 1</b>					
	Formwork to soffit of suspended slab and beams	2,580	m2	100.00	257,967
	Formwork to edge of slab perimeter	292	m	43.00	12,561

## Trade Detail

**Project:** Car Park Construction  
**Building:** Nowra Car Park

**Details:** Nowra Car Park -3 levels w/o cladding  
Option 4

Code	Description	Quantity	Unit	Rate	Subtotal
------	-------------	----------	------	------	----------

**Suspended Slab (3 levels Only)***(Continued)*

	Reinforcement in slabs and beams (250kg/m3)	209	t	2,800.00	585,200
	Concrete to slab and beams	836	m3	260.00	217,360
	Finish and cure slab	2,580	m2	10.00	25,797
<b>Suspended Slab Level 2</b>					
	Formwork to soffit of slab and beams	4,481	m2	100.00	448,126
	Formwork face of beam and edge of slab	292	m	43.00	12,561
	Reinforcement in slabs and beams (250kg/m3)	276	t	2,800.00	773,500
	Concrete to slab and beams	1,105		260.00	287,300
	Finish and cure slab	4,481		10.00	44,813
<b>Suspended Slab Level 3</b>					
	Formwork to soffit of slab and beams	4,481	m2	100.00	448,126
	Formwork face of beam and edge of slab	292	m	43.00	12,561
	Reinforcement in slabs and beams (250kg/m3)	276	t	2,800.00	773,500
	Concrete to slab and beams	1,105		260.00	287,300
	Finish and cure slab	4,481		10.00	44,813

**Suspended Slab (3 levels Only)****Staircases**

	Formwork to stairs /perimeter wall	865	m2	100.00	86,500
	Concrete to Stairs /perimeter wall	188	m3	300.00	56,400
	Reinforcement to staircase	22	t	2,800.00	62,115
	Balustrades	50	m	162.00	8,100
	Aluminium Canopy to stairwell roof .	52	m2	250.00	13,000

**Staircases****Ramps Grd to Level 3**

<b>Ramp Grd to Level 4</b>					
	Formwork to ramps	359	m2	100.00	35,900
	Reinforcement to ramps	18	t	2,800.00	50,400
	Concrete to ramps	72	m3	300.00	21,600
	Finish and cure ramps	359	m2	10.00	3,590

**Ramps Grd to Level 3****Perimeter Crash Barrier**

	Crash Barrier	853	m	200.00	170,600
--	---------------	-----	---	--------	---------

**Perimeter Crash Barrier****Doors**

## Trade Detail

<b>Project:</b> Car Park Construction	<b>Details:</b> Nowra Car Park -3 levels w/o cladding Option 4
<b>Building:</b> Nowra Car Park	

Code	Description	Quantity	Unit	Rate	Subtotal
------	-------------	----------	------	------	----------

**Doors** (Continued)

	Solid core doors inclusive of hardware for entrances into stairwell	12	no	800.00	9,600
--	---	----	----	--------	-------

**Doors****Wall Finishes**

	Paint to Liftwell walls	297	m2	15.00	4,455
--	-------------------------	-----	----	-------	-------

**Wall Finishes****Floor Finishes**

	Line markings	11,543	m2	5.00	57,715
	Sealer and paint to concrete floor	11,543	m2	8.00	92,344

**Floor Finishes****Fitments**

	Wheel Stops	365	no	350.00	127,750
	Sundry carpark fitments and signage	1	item	20,000.00	20,000

**Fitments****Electric Lighting**

	Top floor lighting	1	item	75,000.00	75,000
	Lighting Grd , Level 2, Level 3	2	item	28,000.00	56,000
	Lighting Half Suspended Floor	1	item	15,600.00	15,600

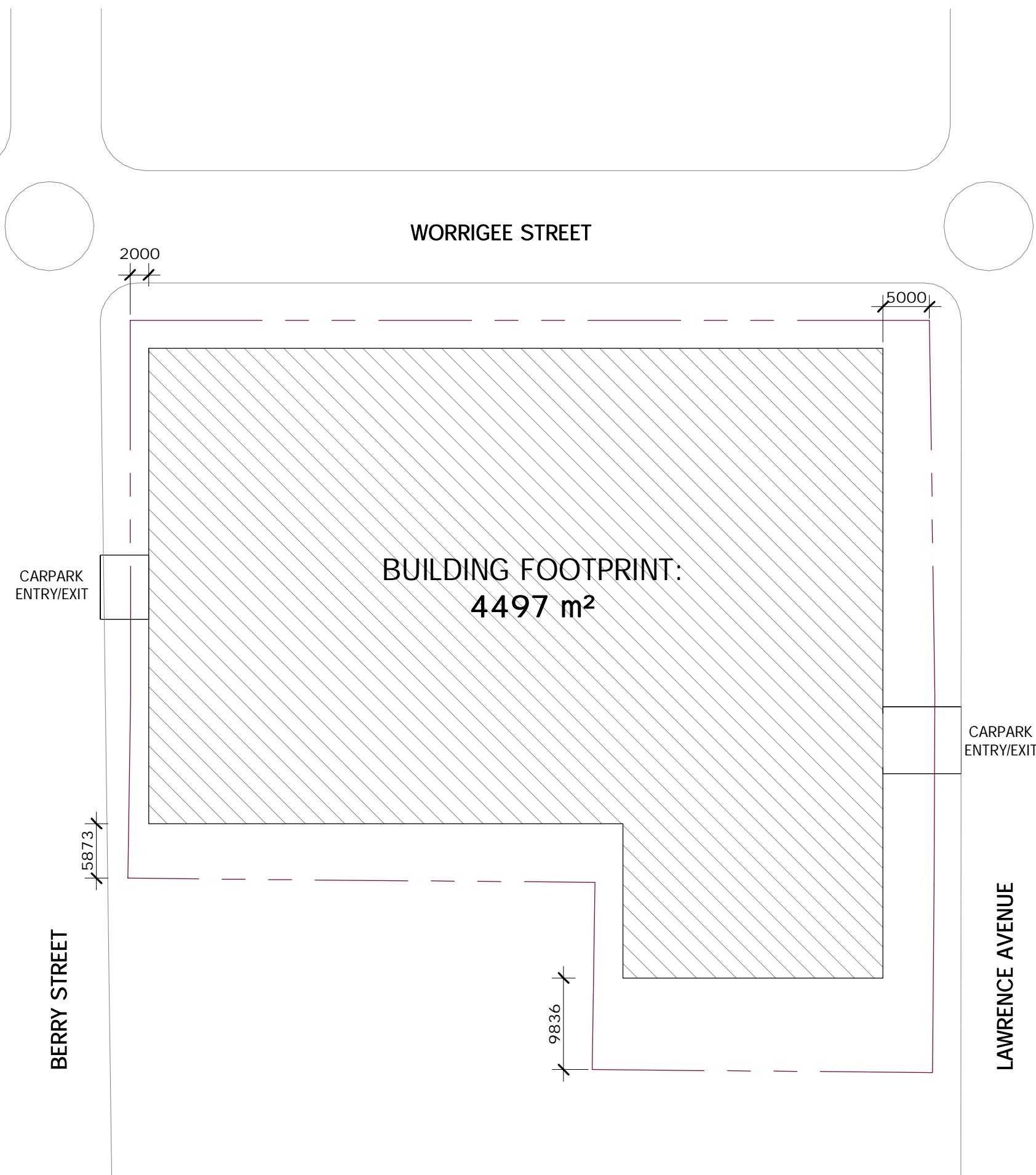
**Electric Lighting****Power Supply**

	Power Supply and distribution	1	item	40,000.00	40,000
--	-------------------------------	---	------	-----------	--------

**Power Supply****External Concrete Path**

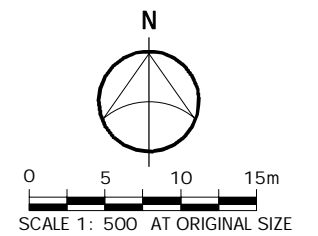
	External conc Path (1m wide )	210	m	250.00	52,500
--	-------------------------------	-----	---	--------	--------

**External Concrete Path**

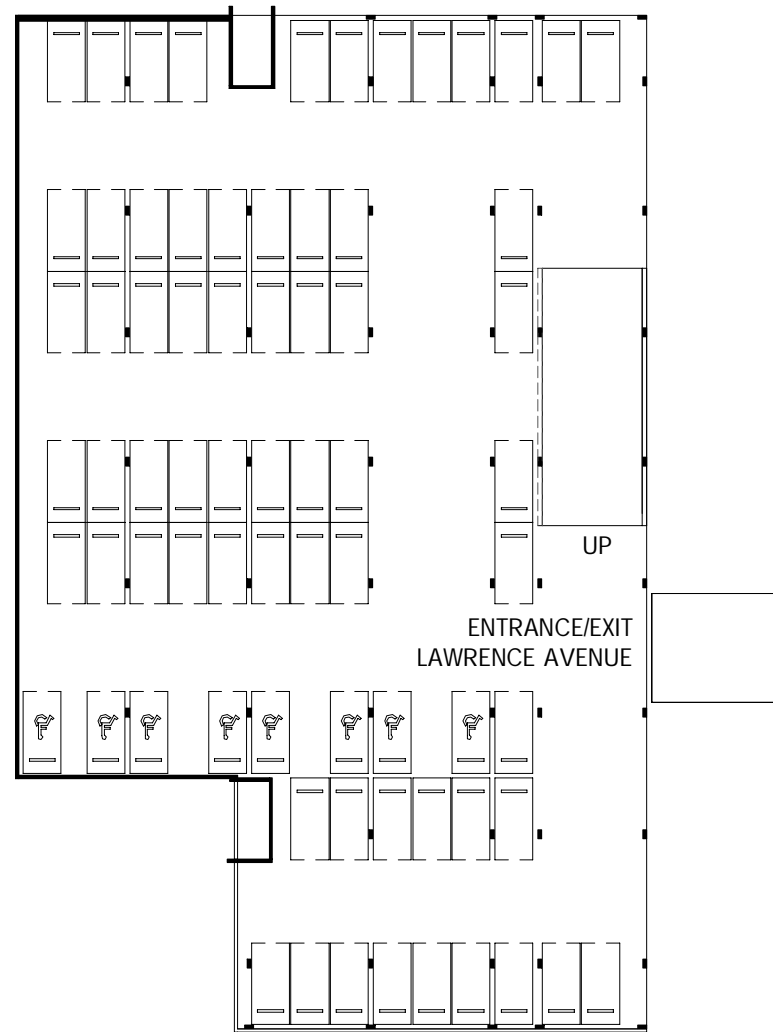


PARKING SPACES SCHEDULE- OPTION 1		
TAG	COUNT	DESCRIPTION
LEVEL G SFL		
PK1	64	STANDARD 90° USER CLASS 3 PARKING SPACE
PK5	8	DISABLED PARKING SPACE
LEVEL G SFL: 72		
LEVEL 1 SFL		
PK1	140	STANDARD 90° USER CLASS 3 PARKING SPACE
PK5	7	DISABLED PARKING SPACE
LEVEL 1 SFL: 147		
LEVEL 2 SFL		
PK1	152	STANDARD 90° USER CLASS 3 PARKING SPACE
LEVEL 2 SFL: 152		
LEVEL 3 SFL		
PK1	152	STANDARD 90° USER CLASS 3 PARKING SPACE
LEVEL 3 SFL: 152		
LEVEL 4 SFL		
PK1	152	STANDARD 90° USER CLASS 3 PARKING SPACE
LEVEL 4 SFL: 152		
Grand total: 675		

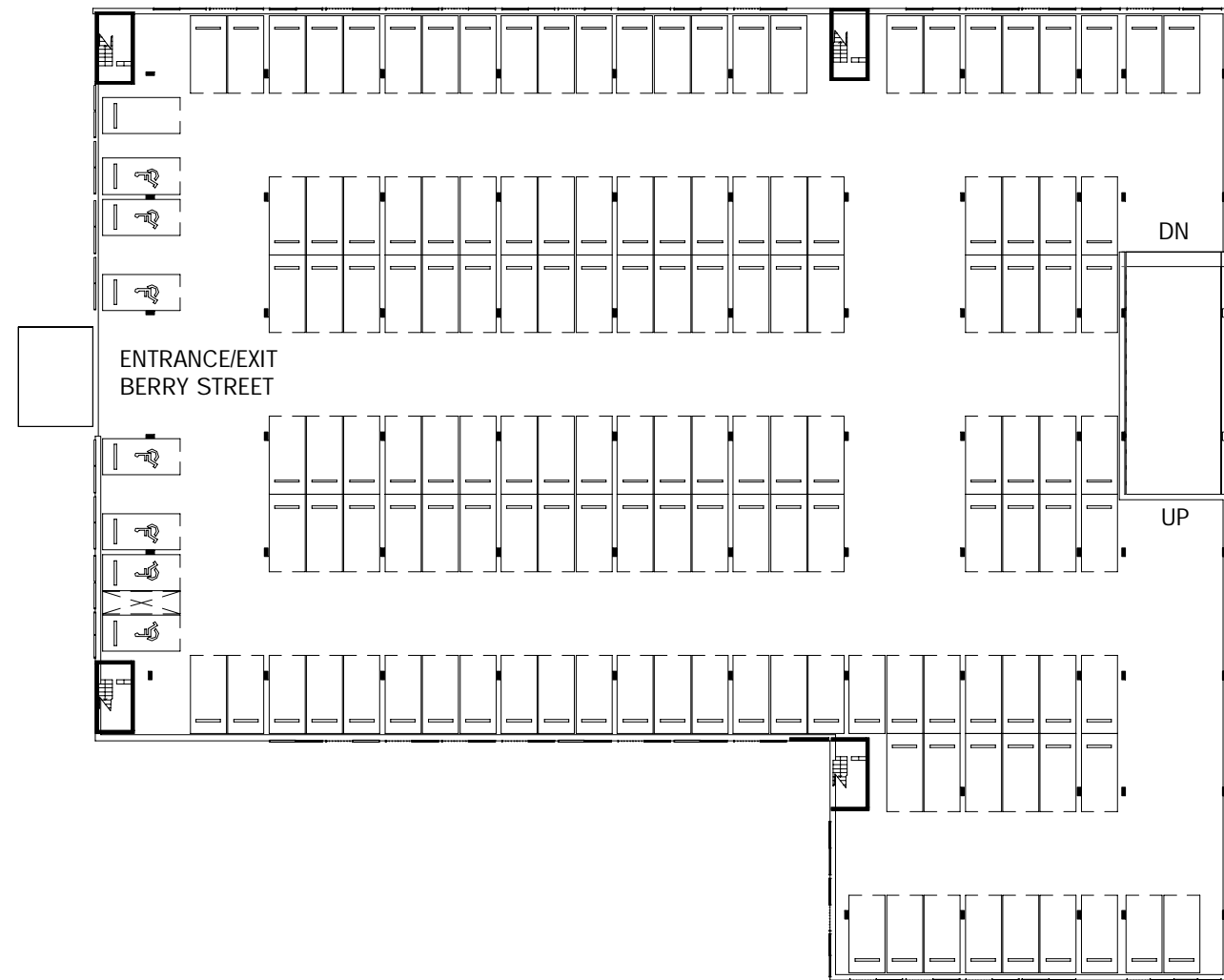
CARPARK AREA SCHEDULE	
NAME	AREA
GROUND AREA	2510.87 m <sup>2</sup>
LEVEL 1	4394.34 m <sup>2</sup>
LEVEL 2	4394.34 m <sup>2</sup>
LEVEL 3	4394.34 m <sup>2</sup>
LEVEL 4	4394.34 m <sup>2</sup>
	20088.22 m <sup>2</sup>



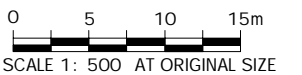
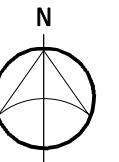




CARPARK PLAN - LEVEL G- OPTION 1  
SCALE 1 : 500

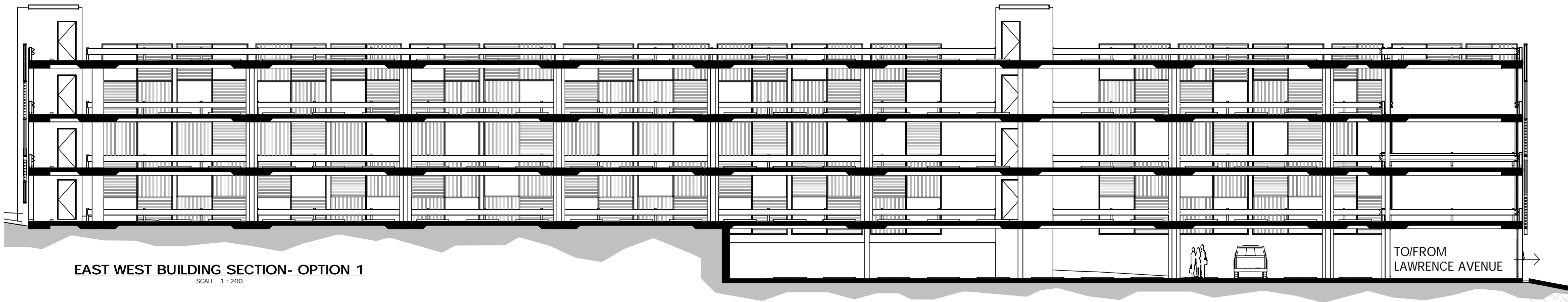


CARPARK PLAN - LEVEL 1- OPTION 1  
SCALE 1 : 500

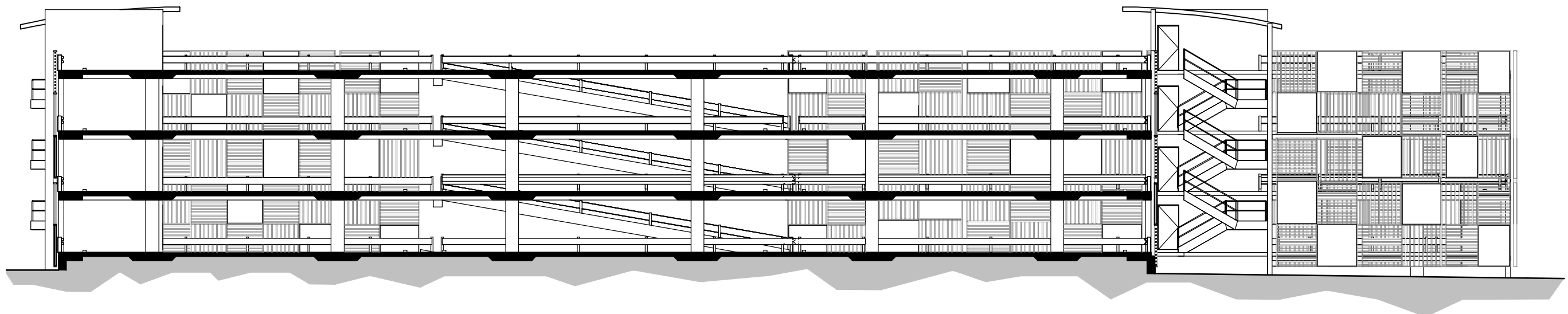




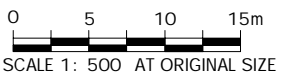
3D SECTION  
SCALE

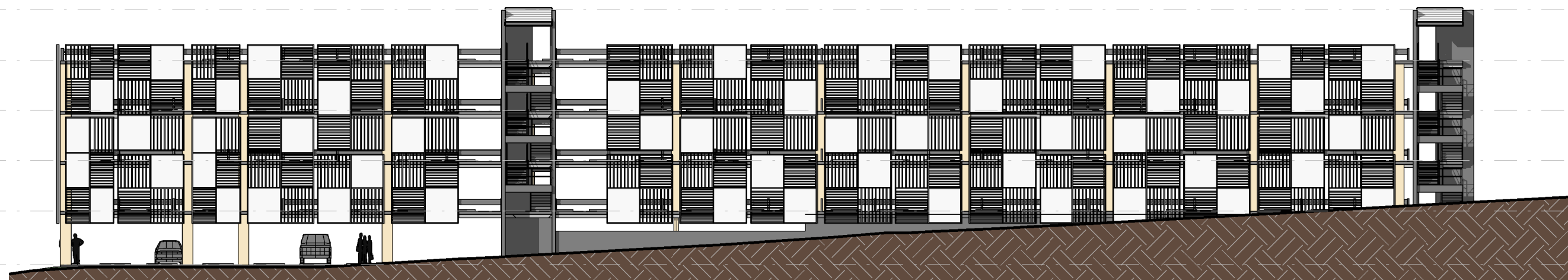


EAST WEST BUILDING SECTION- OPTION 1  
SCALE 1 : 200

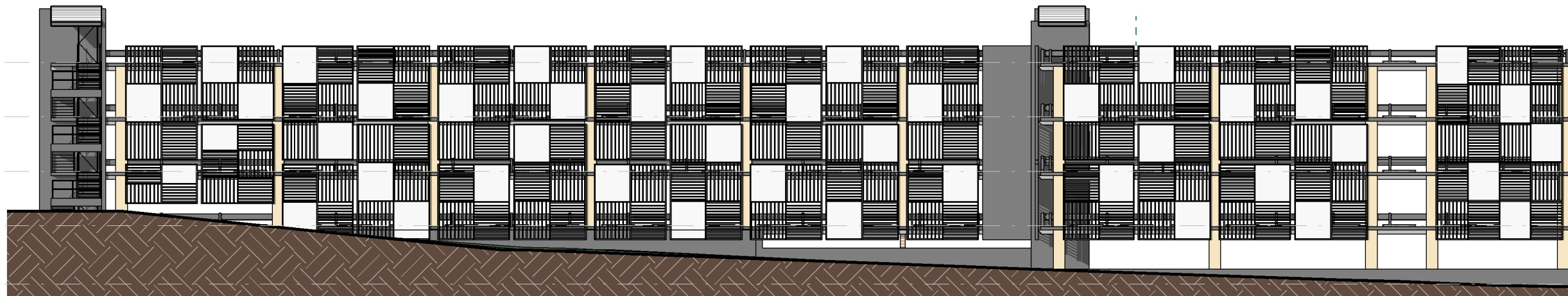


NORTH SOUTH BUILDING SECTION- OPTION 1  
SCALE 1 : 200

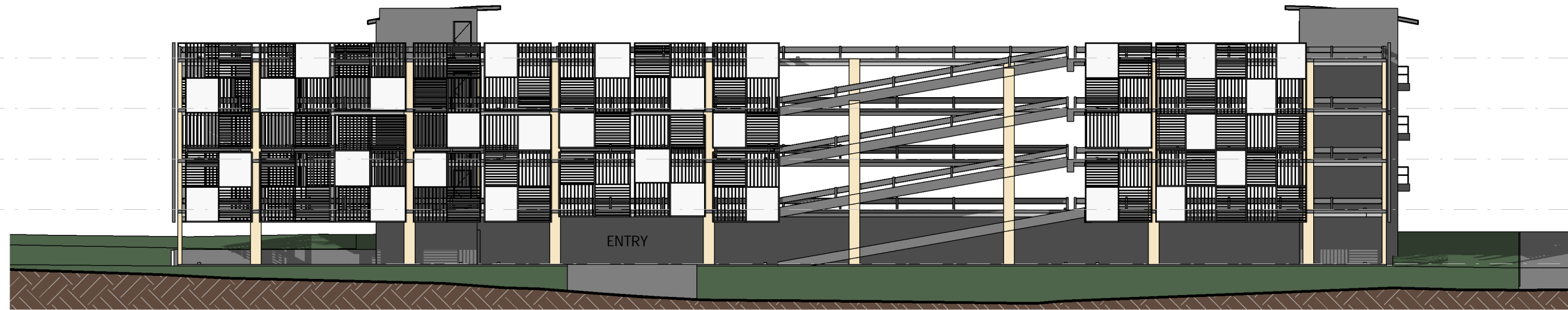




**NORTH ELEVATION**  
SCALE 1 : 250



**SOUTH ELEVATION**  
SCALE 1 : 250



**EAST ELEVATION**  
SCALE 1 : 250

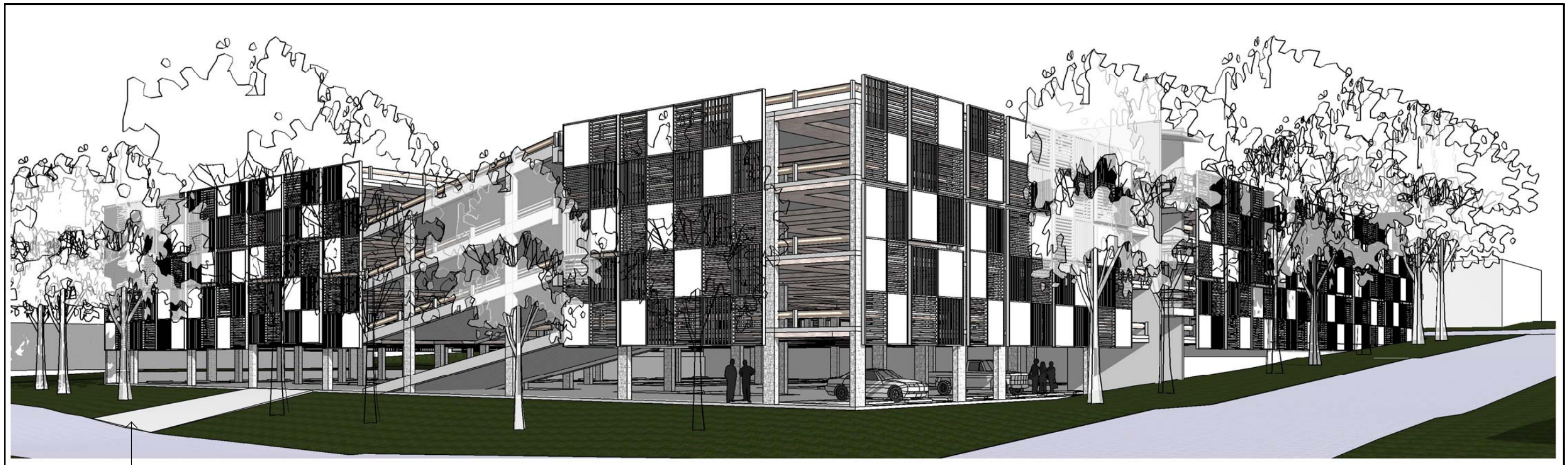


**WEST ELEVATION**  
SCALE 1 : 250



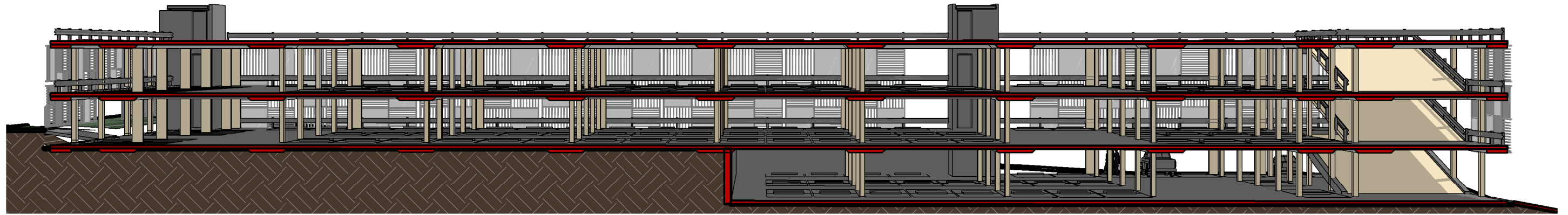
**3D View - Berry St Entry**

SCALE

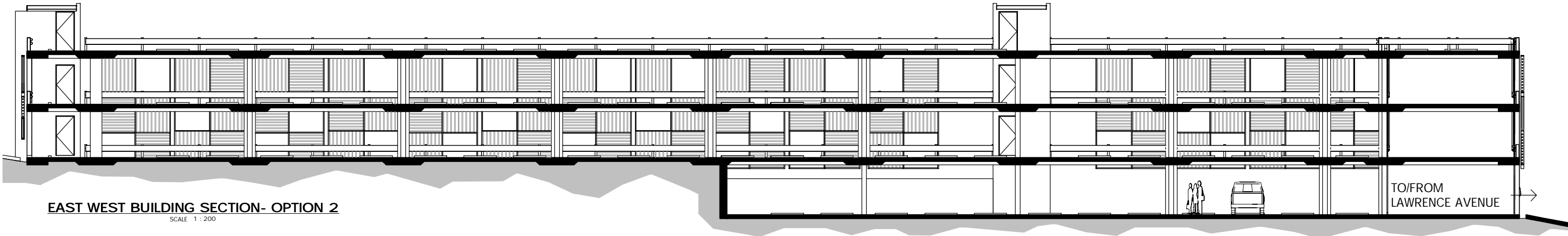


**3D View - Corner Lawrence & Worrigee St**

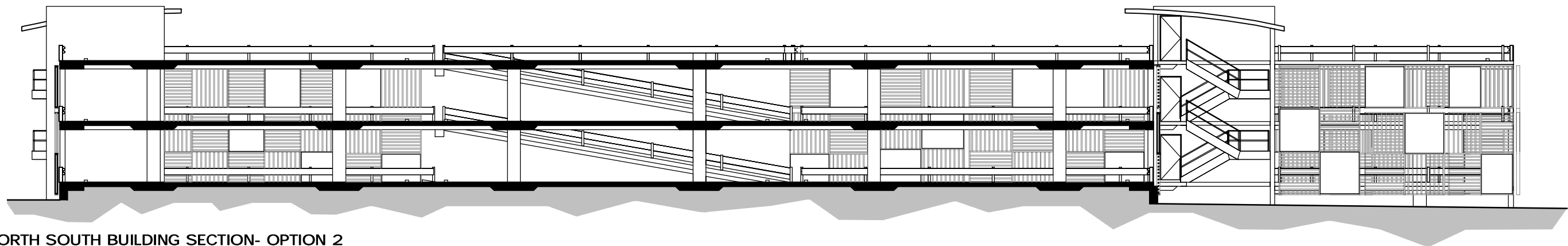
SCALE



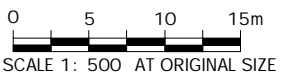
3D SECTION OPTION 2  
SCALE



EAST WEST BUILDING SECTION- OPTION 2  
SCALE 1 : 200



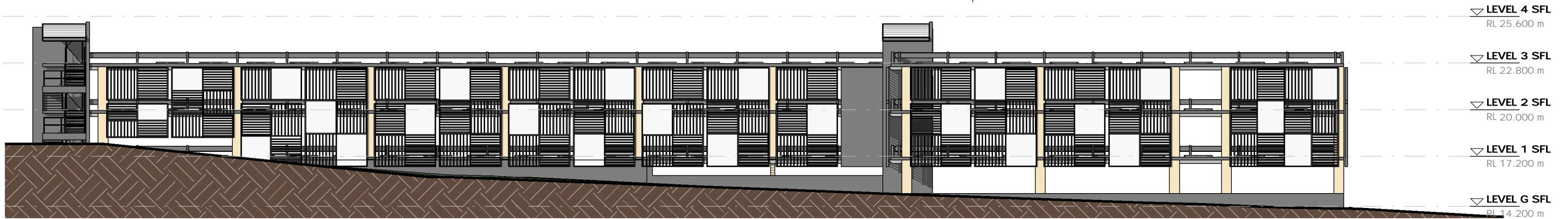
NORTH SOUTH BUILDING SECTION- OPTION 2  
SCALE 1 : 200





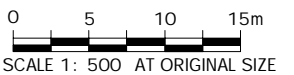
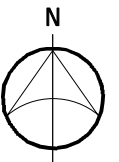
**NORTH ELEVATION**

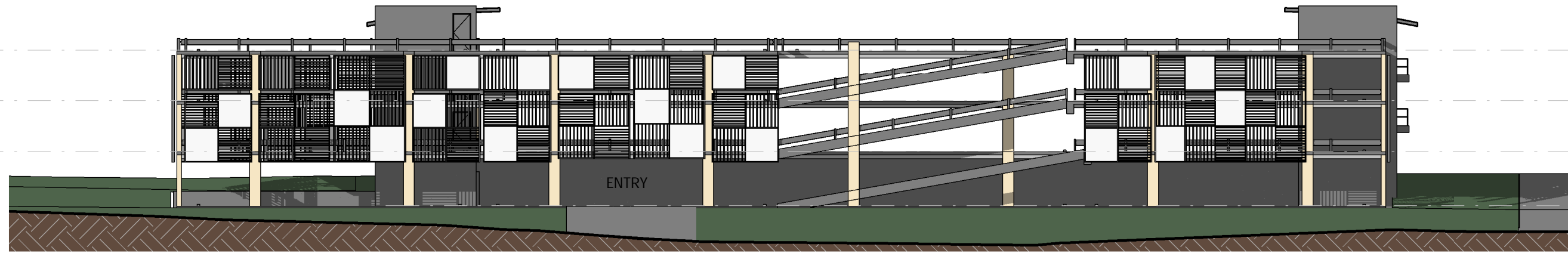
SCALE 1 : 250



**SOUTH ELEVATION**

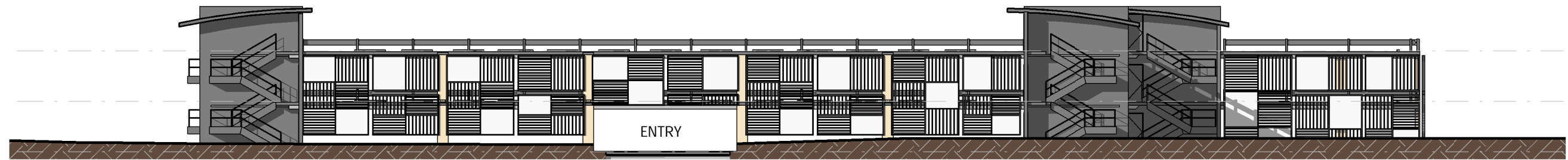
SCALE 1 : 250





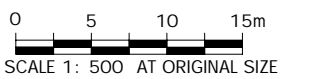
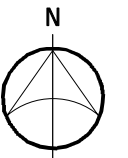
- ▽ LEVEL 3 SFL  
RL 22.800 m
- ▽ LEVEL 2 SFL  
RL 20.000 m
- ▽ LEVEL 1 SFL  
RL 17.200 m
- ▽ LEVEL G SFL  
RL 14.200 m

**EAST ELEVATION**  
SCALE 1 : 250

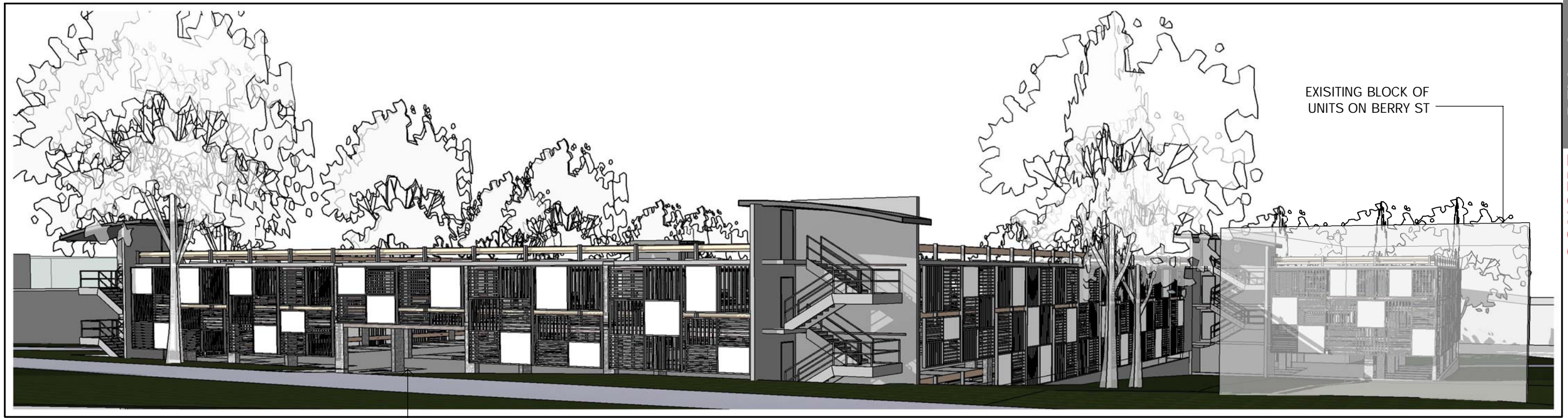


- ▽ LEVEL 3 SFL  
RL 22.800 m
- ▽ LEVEL 2 SFL  
RL 20.000 m
- ▽ LEVEL 1 SFL  
RL 17.200 m

**WEST ELEVATION**  
SCALE 1 : 250

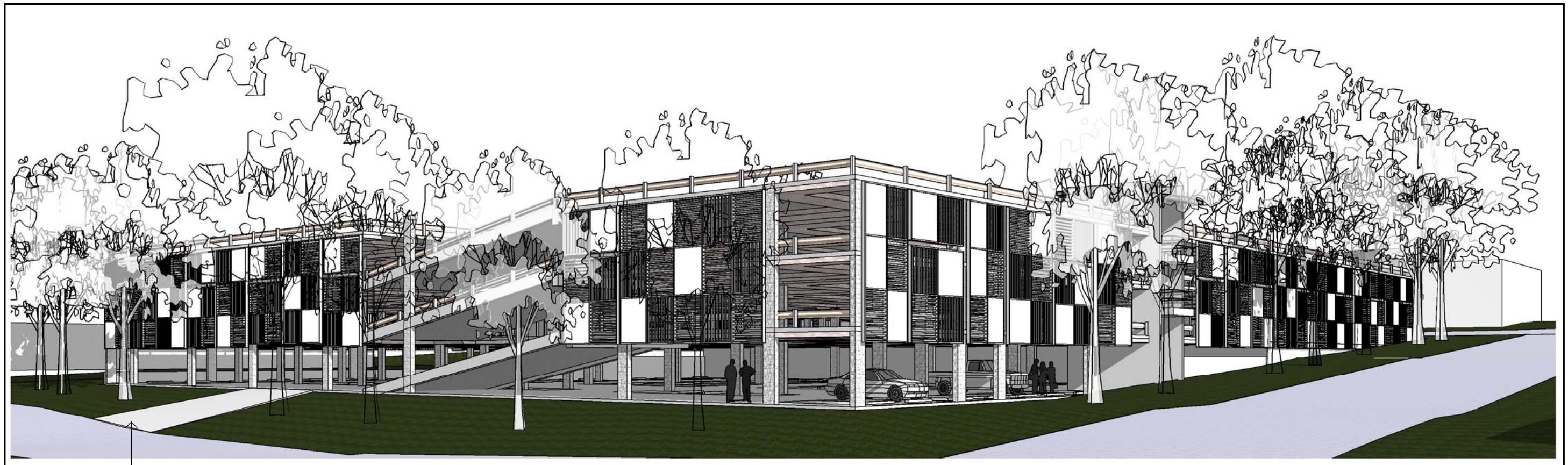






CONCEPT REV - A 06/06/12

3D View - Berry St Entry OP2  
SCALE



3D View - Corner Lawrence & Worrige St OP2  
SCALE