



Shoalhaven
City Council

BREAM BEACH BUSHCARE ACTION PLAN

CONTACT INFORMATION

| | |
|-------------------------|------------------------------------|
| Group Name: | Bream Beach |
| Contact: | Jennifer Compagnoni & Kim Landy |
| Address: | 44 George Street, Redfern NSW 2016 |
| Tel: | 0412 6265653 |
| Email: | kimlandy@bigpond.com |
| Reserve Name: | N/A |
| Reserve No: | BWB622 |
| Land Tenure: | Crown Land TM/CC |
| Comm. Land Type: | N/A |

1. BUSHCARE GROUP GOALS

The goals of the Bushcare Group are:

1. Removal of exotic weeds from foreshore reserve to promote local biodiversity
2. Manage the remaining *Pittosporum undulatum* species on the Bream Beach Crown foreshore reserve to maintain the reserve 's biodiversity.
3. Manage the remaining *Pittosporum undulatum* species around Stoney Creek and the boat ramp to maintain in biodiversity.

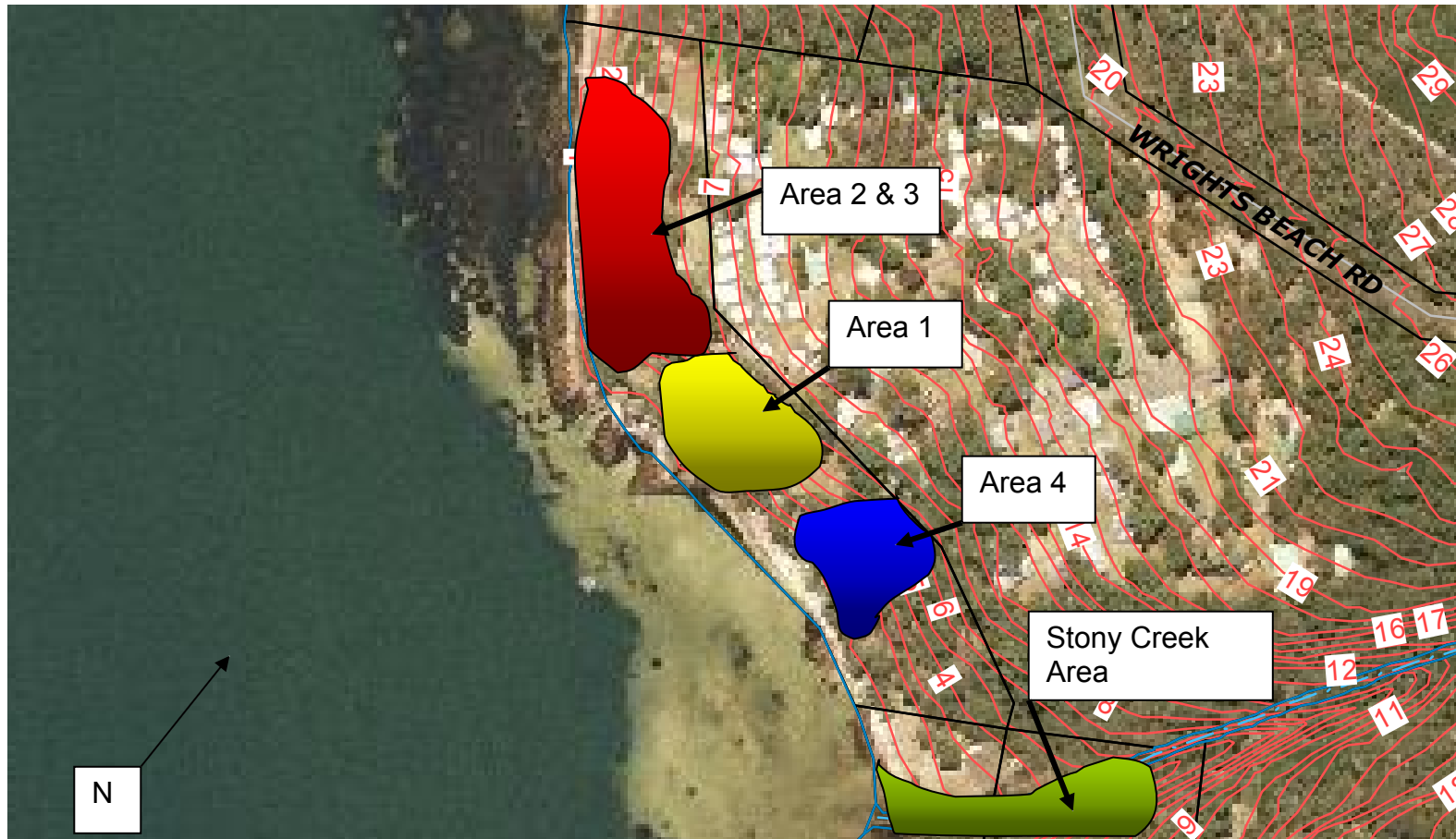
2. SHOALHAVEN BUSHCARE GROUP ACTION PLAN (to be in conjunction with attached site map)

NOTE: Priority should be rated as H = High (within 12 months); M = Medium (1-3 years); L = Low

| GROUP ACTION | PRIORITY | METHOD | TIME |
|-------------------------------------------------------------------------------------------------------------------------------------------------------------------------------------------------------------------------------------------------------------------------------------------------------------------------------------------------------------------------------------------|----------|----------------------------------------------------------------------|------------|
| Area 1- <ul style="list-style-type: none"> • Council to prepare Review of Environmental Factors for the staged control of <i>Pittosporum undulatum</i> on the crown foreshore reserve • Submit the REF to NSW Environment and Climate Change Department for approval • Manage <i>Pittosporum undulatum</i>. followed by monitoring of the regeneration | H | | On - going |
| Area 2-3- <ul style="list-style-type: none"> • Council to prepare Review of Environmental Factors for the staged control of <i>Pittosporum undulatum</i> on the crown foreshore reserve • Submit the REF to NSW Environment and Climate Change Department for approval • Manage <i>Pittosporum undulatum</i>. followed by monitoring of the regeneration | H | | On – going |
| Area 4- spot spray Honeysuckle, Fishbone Fern and Spider Plant. Hand remove weeds around native plants prior to spraying to prevent off-target damage Hand pull Ginger Lily and Crofton weed Senna control | H | Spot spray with 1:75 Glyphosate. Hand remove Cut and paint | On going |
| Stoney Creek and boat ramp- monitor and remove young <i>Pittosporum</i> . | M | | On going |

| GROUP ACTION | PRIORITY | METHOD | TIME |
|------------------------------------------------------------------------------------------------------------------------------------------------------------------------------------------------------------------------------------------------------------------------------------------------------------------------------------------------------------------------------------------------------|----------|--------|------|
| <ul style="list-style-type: none"> • Council to prepare Review of Environmental Factors for the staged control of <i>Pittosporum undulatum</i> on the crown foreshore reserve • Submit the REF to NSW Environment and Climate Change Department for approval • Manage <i>Pittosporum undulatum</i>. followed by monitoring of the regeneration <p>Remove Bamboo</p> | | | |

3. BUSHCARE GROUP ACTION PLAN MAP



4. BUSHCARE GROUP OH&S & EQUIPMENT REQUIREMENTS

| Type of Activity | Yes |
|----------------------------------------------------------------|-----|
| Manual weed control (cut & paint, scrape and paint etc) | √ |
| Chemical control (spraying of herbicides) | √ |
| Planting | √ |
| Minor construction (walking track, fencing, outdoor furniture) | |
| Propagation & seed collection | √ |
| Education (school groups, field days etc) | |
| Other | |

5. COUNCIL SUPPORT

- a. Technical support & administrative support
- b. Materials and equipment and PPE.
- c. Green waste removal
- d. Supply of mulch and tube stock
- e. Supply of chemical.

6. HAS A SITE HAZARD AND RISK ASSESSMENT BEEN COMPLETED FOR THE BUSHCARE SITE?

Yes No

Attach a copy of the site/s risk assessment to the plan.

7. LIST THE PERSONAL PROTECTION EQUIPMENT REQUIRED FOR VOLUNTEERS WHILST WORKING ON THE SITE

| PPE Equipment Required |
|------------------------|
| First Aid Kit |
| Gloves |
| Sunscreen |
| Insect repellent |

8. POSSIBLE FUTURE FUNDING

| Project | Funding source |
|---------|----------------|
| N/A | |

9. PLAN WILL BE REVIEWED APRIL 2013.

The group should review a summary of the Bushcare Policy & Procedures at the time of each annual review

10. PLEASE LIST OTHER LOCAL OR REGIONAL MANAGEMENT PLANS OR STRATEGIES THAT THIS PLAN RELATES TO

| Name of document | Year it was produced | Produced by |
|------------------------------------------|----------------------|-------------------------|
| Shoalhaven Foreshore Reserves Policy | 2005 | Shoalhaven City Council |
| St Georges Basin Estuary Management Plan | December 1998 | Shoalhaven City Council |

11. SUGGESTED SPECIES LIST FOR FUTURE SITE REVEGETATION

| OVERSTOREY TREES | |
|-----------------------------------------------------|-------------------------------------|
| SHRUBS | |
| Botanical | Common |
| <i>Acacia longifolia</i> subsp. <i>longifolia</i> | Sydney Golden Wattle |
| <i>Acacia longifolia</i> spp. <i>sophorae</i> | Coastal Wattle |
| <i>Acacia falcata</i> | Sickle Wattle, Silver-Leaved Wattle |
| <i>Acacia ulicifolia</i> | Prickly Mosses |
| <i>Acacia suaveolens</i> | Sweet Wattle |
| <i>Acacia terminalis</i> | Sunshine Wattle |
| <i>Baeckea imbricata</i> | |
| <i>Correa alba</i> | White Correa |
| <i>Eleocarpus reticulatus</i> | Blueberry Ash |
| <i>Indigofera australis</i> subsp. <i>australis</i> | Austral Indigo |
| <i>Kunzea ambigua</i> | Tick Bush |
| <i>Lambertia formosa</i> | Mountain Devil |
| <i>Leptospermum polygalifolium</i> | Yellow Tea Tree |
| <i>Leptospermum laevigatum</i> | Coastal Tea Tree |
| <i>Pultenaea daphnoides</i> | Bush Pea |
| UNDERSTOREY (grasses, herbs, climbers) | |
| Botanical | Common |
| <i>Dianella longifolia</i> | Blueberry Lily |
| <i>Dianella caerulea</i> | Nodding Blue Lily |
| <i>Dianella congesta</i> | Beach Flax Lily |
| <i>Dianella revoluta</i> | Blueberry Lily |
| <i>Lomandra longifolia</i> | Lomandra |
| <i>Platylobium formosum</i> | Handsome Flat Pea |

| | |
|--------------------------|----------------|
| <i>Poa poiformis</i> | Coastal Poa |
| <i>Poa sieberiana</i> | Snow Grass |
| <i>Themeda australis</i> | Kangaroo Grass |

12. SITE WEED LIST

| Noxious | Other | Control Method |
|--------------|-----------------------|---------------------------------------------------------------------------------------------|
| Blackberry | | Paint and scrape with neat Glyphosate |
| | Bamboo | Cut and paint stumps with neat Glyphosate |
| Crofton Weed | | Spray with round up at ratio of 1:75 Glyphosate/water in Spring |
| | Fishbone Fern | Spray with round up at ratio of 1:75 Glyphosate/water + wetting agent during warmer periods |
| | Ginger Lily | Dig out |
| | Honeysuckle | Hand pull or Spray with Glyphosate at ratio of 1:75 round up/water during warmer periods |
| | Pittosporum undulatum | Cut and paint stumps with neat Glyphosate |
| | Senna pendula | Cut and paint stump with neat Glyphosate or hand pull young plants |
| | Spider plant | Hand dig |

Attachment 1: Group support and skill development needs. This information helps to identify gaps that may exist between what the group require to function effectively and what the group has available. **This focuses on the group, overall, not individual members.**

| <i>Tick one box only</i> | We are absolute beginners – don't know a great deal | We know a bit – enough to get by most of the time | We know quite a lot – and we know when to seek help | There's probably not much more we can learn on this | Comments |
|------------------------------------------------------|------------------------------------------------------------|----------------------------------------------------------|------------------------------------------------------------|------------------------------------------------------------|-----------------|
| OH&S – develop and follow risk assessment | | | | | |
| Develop and/ or monitor Action Plan | | | | | |
| Plant identification – local native plants | | | | | |
| Weed identification & control methods | | | | | |
| Bush regeneration methods | | | | | |
| Seed collection & propagation | | | | | |
| Group planning and decision making | | | | | |
| Managing neighbour relations | | | | | |
| Community education – schools, neighbours etc | | | | | |
| Volunteer/ group member recruitment | | | | | |
| Preparing grant applications | | | | | |

| | |
|-------------------------------------------------------------------------------------|-------------------------------------------------------------------------------------|
| List below the 10 most common plants that are indigenous to the area. | List below the 10 most common plants that are <i>not</i> indigenous to the area. |
| | |
| Can all of the group regular volunteers identify these? YES NO circle one | Can all of the group regular volunteers identify these? YES NO circle one |

Bushcare Group Name **Coordinator Name** **Signature**

Date .../.../....