



## CURRARONG PARKCARE ACTION PLAN

### CONTACT INFORMATION

<b>Group Name:</b>	Currarong Parkcare
<b>Contact:</b>	Peter Raile
<b>Address:</b>	17 Beecroft Parade, Currarong
<b>Tel:</b>	44483073
<b>Email:</b>	praile@bigpond.com
<b>Reserve Name:</b>	Abrahams Bosom Reserve, Beecroft Parade, Dolphin Reserve, Elliott Reserve, Rock Pool Reserve, Warrain Reserve, Walton Way Reserve
<b>Reserve No:</b>	CCR279, CCR391, CCR394, CCR395, CCR435
<b>Land Tenure:</b>	Crown & Council
<b>Comm. Land Type:</b>	Community Land, Parks and Sportsfield

### 1. PARKCARE GROUP GOALS

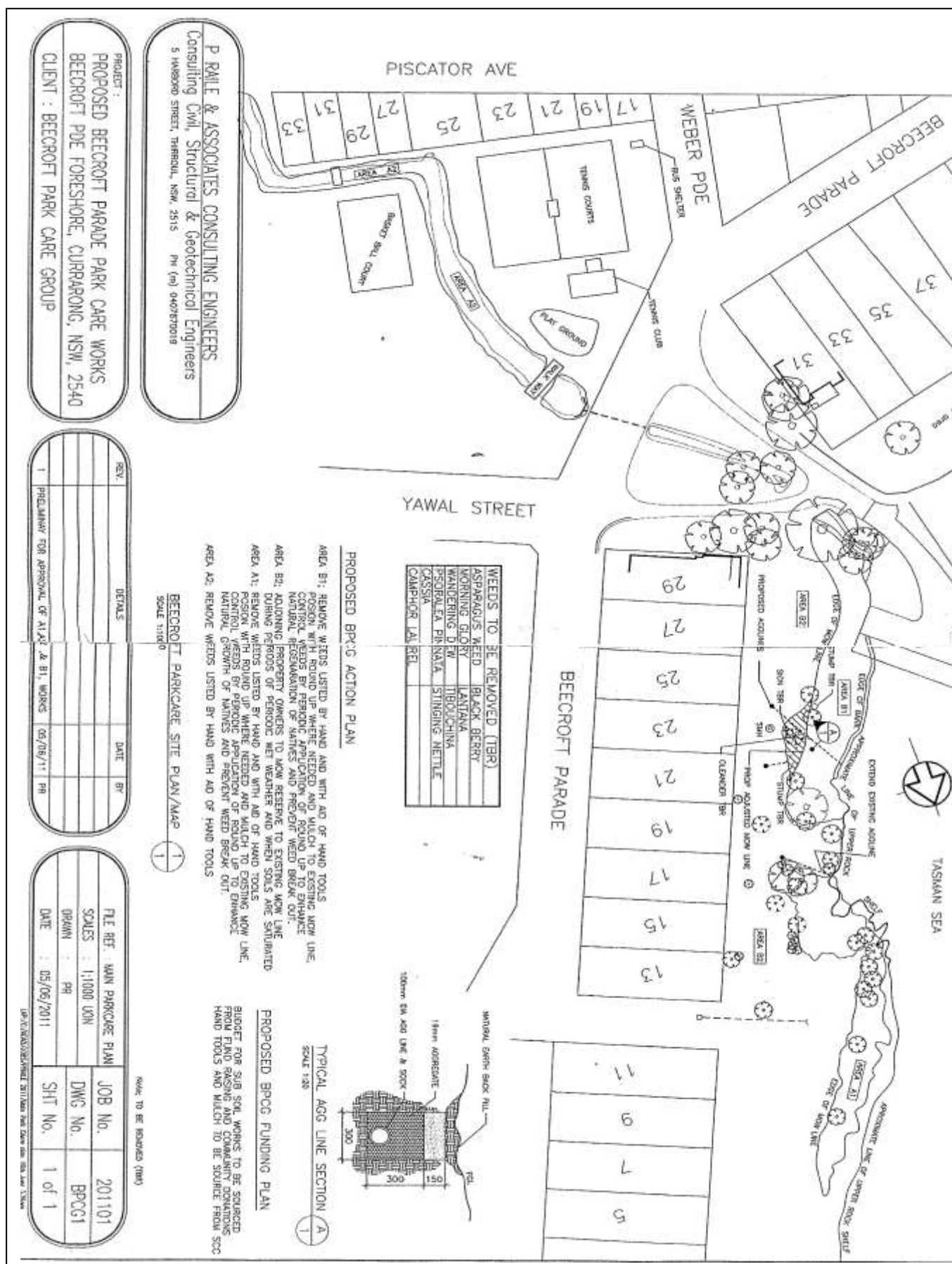
To maintain the visual integrity and enhance the physical amenity of reserves in Currarong Village

**2. SHOALHAVEN PARKCARE GROUP ACTIVITIES TABLE (to be in conjunction with attached site map)**

**NOTE: Priority should be rated as H = High (within 12 months); M = Medium (1-3 years); L = Low**

<b>GROUP ACTION – Attachment BPCG1</b>	<b>PRIORITY</b>	<b>METHOD</b>	<b>TIME</b>
<b>Beecroft Parade(Areas - A1,A2,B2) Elliott Reserve (A2)</b>			
Remove weeds areas A1,A2,B1	H	Hand and hand tools	Ongoing
Remove exotic species - Oleander, Tibouchina, Hedera helix			
Install agricultural drainage lines on reserve at 21 & 23 Beecroft Parade	H	Hand and hand tools	1 yrs
Maintain Grass by mowing to existing mow lines Areas B2	H	Council inspected & approved mowers and brushcutters	Ongoing
Herbicide weed control to area B1 to allow native plant regeneration	H	Small hand held spray applicator	Ongoing
Mulch herbicide areas and hand weeded areas	H	Hand and hand tools	Ongoing
Maintain minor parks infrastructure (paint/repair, graffiti removal etc)	M	Hand and hand tools	Ongoing
<b>GROUP ACTION – Rock Pool Reserve, Dolphin Point, Warrain Beach, Abrahams Bosom Beach, Walton Way</b>	<b>PRIORITY</b>	<b>METHOD</b>	<b>TIME</b>
Herbicide control weeds in Walton Way regeneration area	M	Small hand held spray applicator	Ongoing
Maintain grass and brushcut weeds in all area. Mulch as necessary in herbicide controlled and regeneration areas	M	Hand and hand tools	Ongoing
Install & replace bollards as required	M	Hand and hand tools	Ongoing
Maintain minor parks infrastructure (paint/repair, graffiti removal etc)	M	Hand and hand tools	Ongoing

### 3. PARKCARE GROUP ACTION PLAN MAP (1)



REV

REV	DETAILS	DATE	BY
1	PRELIMINARY FOR APPROVAL OF A1, A2 & B1, WORKS	05/05/11	PR

FILE REF: MAIN PARKCARE PLAN

SCALE: 1:1000 LGON

DWG No. BPGC1

DATE: 05/05/2011

JOB No. 201101

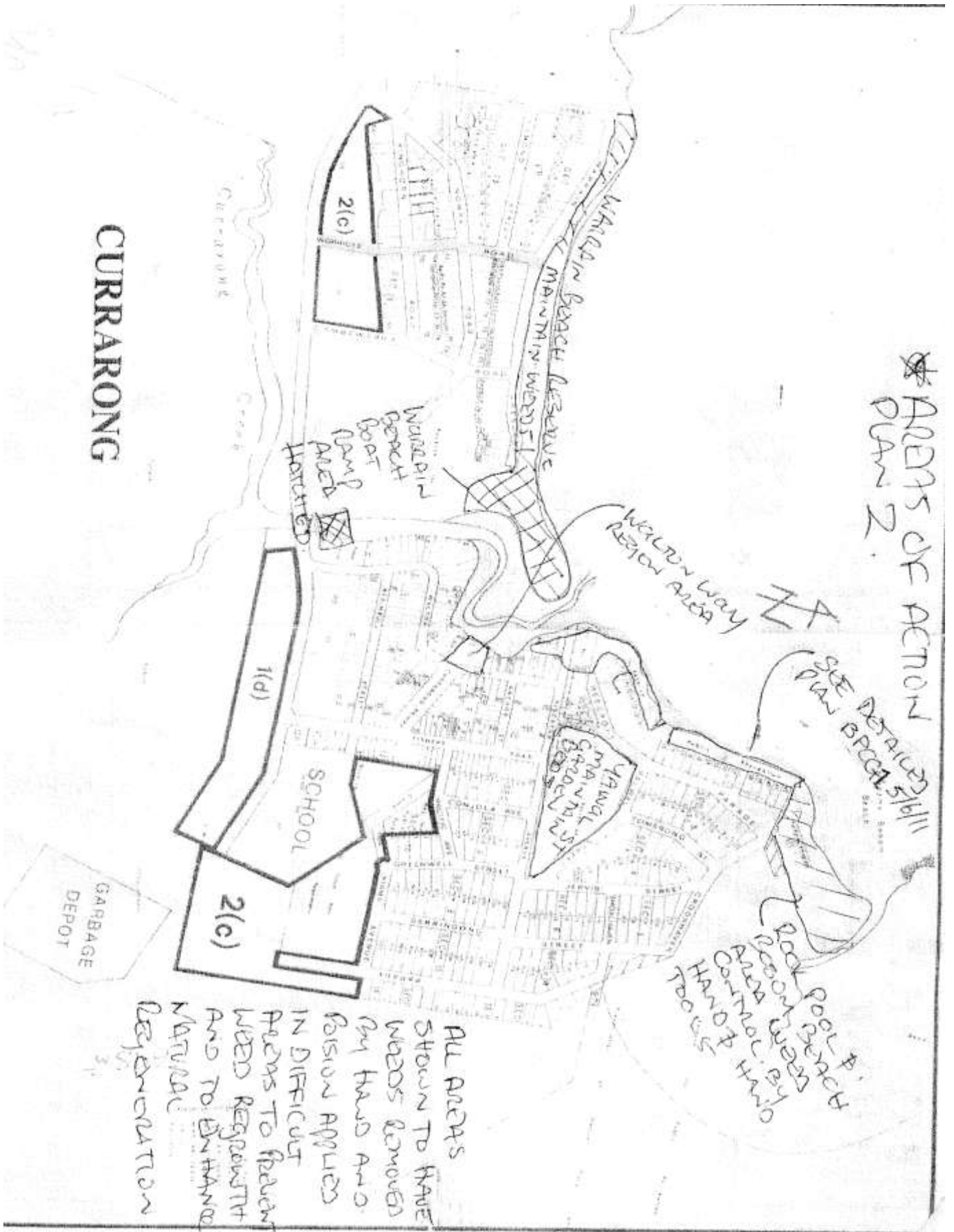
DWG No. BPGC1

SHT No. 1 of 1

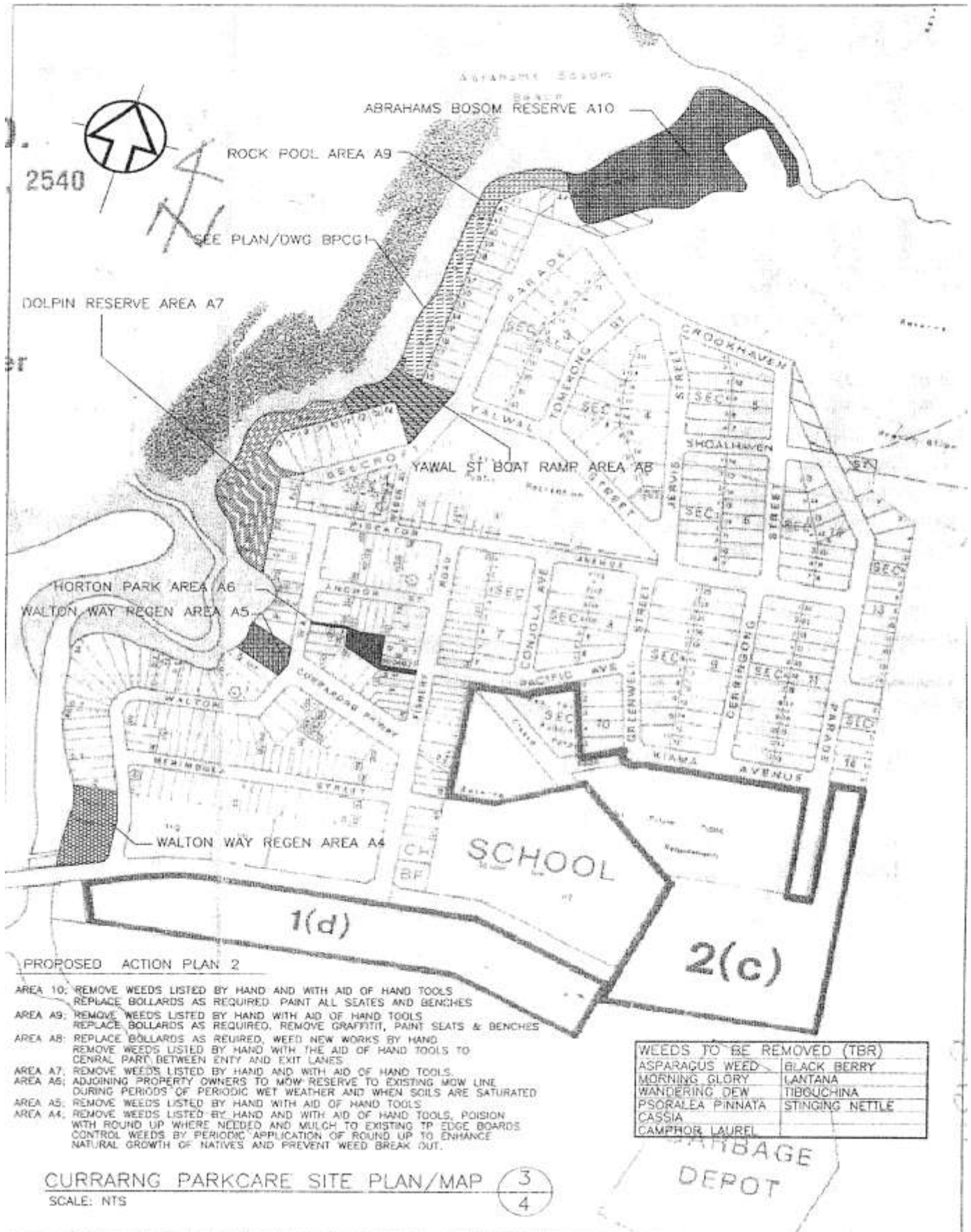
MAKE TO BE REMOVED (TERR)

UP/CI/INDOOR/SHIELD BATTER FACE DRAIN OVER 500 LPM 150MM

MAP (2)



# Map (3)



**PROPOSED ACTION PLAN 2**

- AREA 10: REMOVE WEEDS LISTED BY HAND AND WITH AID OF HAND TOOLS. REPLACE BOLLARDS AS REQUIRED. PAINT ALL SEATES AND BENCHES
- AREA A9: REMOVE WEEDS LISTED BY HAND WITH AID OF HAND TOOLS. REPLACE BOLLARDS AS REQUIRED. REMOVE GRAFFITI, PAINT SEATS & BENCHES
- AREA A8: REPLACE BOLLARDS AS REQUIRED, WEED NEW WORKS BY HAND. REMOVE WEEDS LISTED BY HAND WITH THE AID OF HAND TOOLS TO CENTRAL PART BETWEEN ENTRY AND EXIT LANES.
- AREA A7: REMOVE WEEDS LISTED BY HAND AND WITH AID OF HAND TOOLS.
- AREA A6: ADJOINING PROPERTY OWNERS TO MOW RESERVE TO EXISTING MOW LINE DURING PERIODS OF PERIODIC WET WEATHER AND WHEN SOILS ARE SATURATED
- AREA A5: REMOVE WEEDS LISTED BY HAND WITH AID OF HAND TOOLS
- AREA A4: REMOVE WEEDS LISTED BY HAND AND WITH AID OF HAND TOOLS. POISON WITH ROUND UP WHERE NEEDED AND MULCH TO EXISTING TP EDGE BOARDS. CONTROL WEEDS BY PERIODIC APPLICATION OF ROUND UP TO ENHANCE NATURAL GROWTH OF NATIVES AND PREVENT WEED BREAK OUT.

WEEDS TO BE REMOVED (TBR)	
ASPARAGUS WEED	BLACK BERRY
MORNING GLORY	LANTANA
WANDERING DEW	TIBOUCHINA
PSORALEA PINNATA	STINGING NETTLE
CASSIA	
CAMPHOR LAUREL	

CURRARONG PARKCARE SITE PLAN/MAP  
SCALE: NTS

3  
4

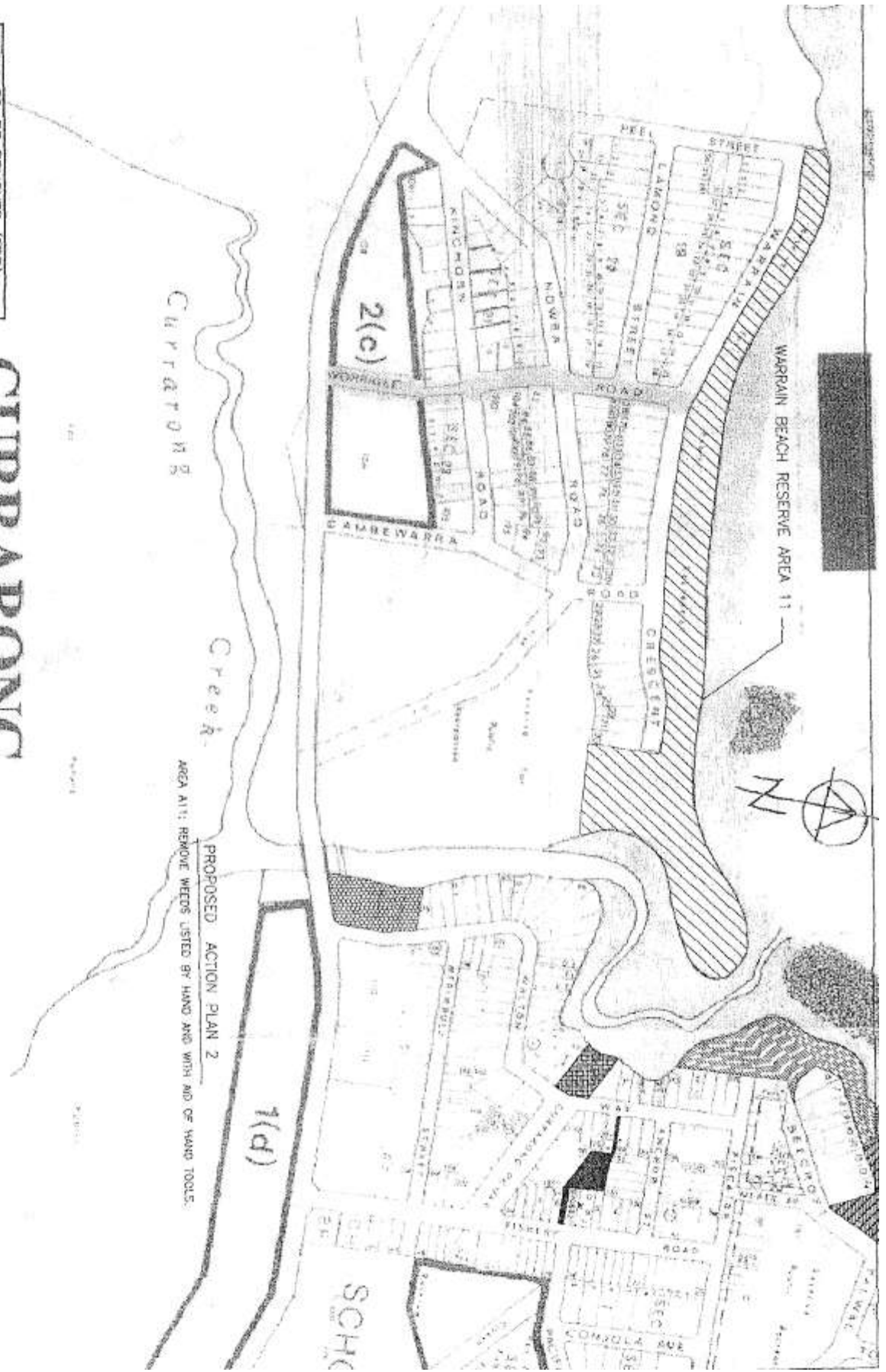
Map (4)

WEEDS TO BE REMOVED (TBR)	
ASPARAGUS WEED	BLACK BERRY
MORNING GLORY	LAITIANA
WANDERING DEW	TIBOUCHINA
PSORALEA PINNATA	STINGING NETTLE
CASSIA	
CAMPHOR LAUREL	

# CURRARONG

CURRARONG PARKCARE SITE PLAN/MAP  
SCALE: MTS

4  
4



PROPOSED ACTION PLAN 2  
AREA A11: REMOVE WEEDS LISTED BY HAND AND WITH AID OF WARD TOOLS.

#### 4. PARKCARE GROUP OH&S & EQUIPMENT REQUIREMENTS

Type of Activity	Yes	SWMS name included
Manual Weed Control	√	SWMSNR040
Chemical Weed control Using Backpack and Smaller Units	√	SWMSNR040
Operate & Maintain Mowers	√	S7 SBS 02
Landscape Construction and Maintenance	√	SWMS01571
Mowing and vegetation	√	
Parks Furnishings and Playground Equipment Maintenance	√	SWMS01662
Roadside and Park Litter Collection	√	SWMS01940

#### 5. COUNCIL SUPPORT

- a) Technical advice and support
- b) Tools and First Aid Kit
- c) Materials /Plants (within limit of budget)
- d) Training support

Council staff will identify weed species, inspect motorised equipment. Council will provide much and herbicide.

#### 6. HAS A SITE HAZARD AND RISK ASSESSMENT BEEN COMPLETED FOR THE PARKCARE SITE?

Yes

#### 7. LIST THE PERSONAL PROTECTION EQUIPMENT REQUIRED FOR VOLUNTEERS WHILST WORKING ON THE SITE

PPE Equipment Required	Date issued
Gloves	
Sunscreen	
Earmuffs	
Safety glasses	
Safety Vests	

## 8. POSSIBLE FUTURE FUNDING

Project	Funding source
Install drainage lines	Parkcare budget

## 9. PLAN WILL BE REVIEWED EVERY THREE YEARS

Next review due:

1/12/2014

The group should review a summary of the Parkcare/Bushcare Policy & Procedures at the time of each annual review

## 10. PLEASE LIST OTHER LOCAL OR REGIONAL MANAGEMENT PLANS OR STRATEGIES THAT THIS PLAN RELATES TO

Name of document	Year it was produced	Produced by
Generic Plans Of Management Parks	2005	SCC
Generic Plans Of Management Natural Areas	2005	SCC
Foreshore Reserves Policy	2005	SCC

## 11. RECOMMENDED PLANTING/REVEGETATION SPECIES LIST

OVERSTOREY TREES	
Botanical	Common
<i>No trees to be planted</i>	
SHRUBS	
Botanical	Common
No shrubs to be planted	
UNDERSTOREY (grasses, herbs, climbers)	
Botanical	Common
No planting to be undertaken	



## 12. SITE WEED LIST

Noxious	Environmental	Control Method
	Asparagus fern	By hand/hand tools
	Camphour laurel	By hand/hand tools
	Cassia spp.	By hand/hand tools
	Ipomoea indica	By hand/hand tools
	Psoralea pinnata	By hand/hand tools
	Tradescantia	By hand/hand tools
	Stinging nettle	By hand/hand tools
Blackberry		By hand/hand tools
Lantana		By hand/hand tools

## 13. ADDITIONAL NOTES

The Parkcare Group will not undertake vegetation works in Area 10, Abrahams Bosom Reserve and Area 11, Warrain Beach as these are Bushcare sites.

An on site meeting is required with the Parks Officer prior to works being undertaken in A1, A2, A4, A5, A6, A7 & A9.

Tree vandalism sign is to stay in place until further notice

**Parkcare Group Name** .....

**Coordinator Name** .....

**Signature** .....

**Date** ..../.../...