



## TREVENAR RESERVE PARKCARE ACTION PLAN

### CONTACT INFORMATION

**Group Name:** Trevenar Reserve Parkcare Group  
**Contact:** Glen Elliott  
**Address:** Parks Officer **Tel:**44293488  
**Email:** [elliottg@shoalhaven.nsw.gov.au](mailto:elliottg@shoalhaven.nsw.gov.au)  
**Reserve Name:** Len Trevenar Reserve **Reserve No:** BSU883  
**Land Tenure:** Shoalhaven City Council  
**Comm. Land Type:** Community Park

### 1. PARKCARE GROUP GOALS

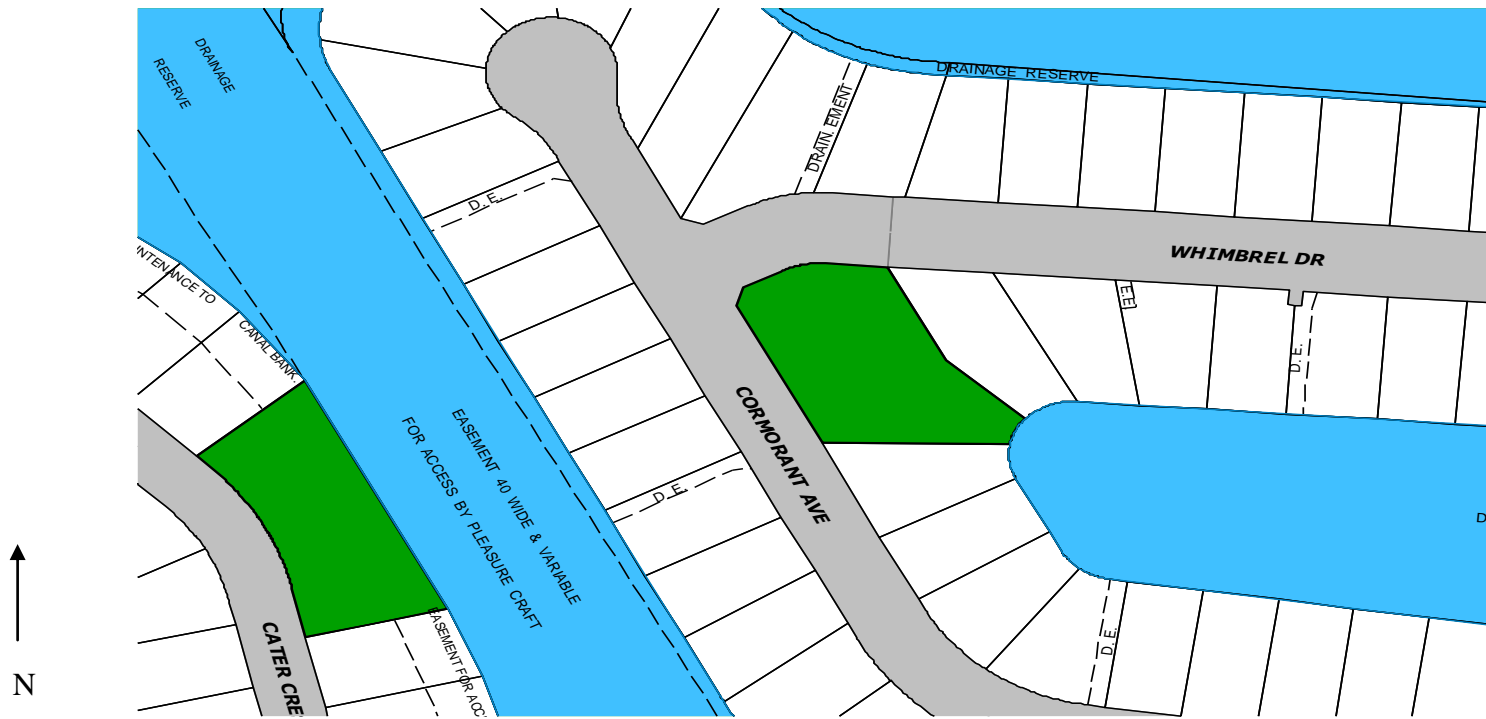
The aims of the Trevenar Reserve Parkcare Group are:  
  
To maintain the visual amenity of Len Trevenar Reserve

**2. PARKCARE GROUP ACTION PLAN (to be in conjunction with attached site map)**

**NOTE: Priority should be rated as H = High (within 12 months); M = Medium (1-3 years); L = Low**

<b>GROUP ACTION</b>	<b>Priority</b>	<b>Method</b>	<b>Time</b>
1. Stockpile fallen branches	H	1. Hand	ongoing
2. Fertilise gardens	M	1. Hand spread	ongoing
3. Paint parks infrastructure	M	1. Hand tools	ongoing

**3. PARKCARE GROUP ACTION PLAN MAP**



**4. PARKCARE GROUP OH&S & EQUIPMENT REQUIREMENTS**

Type of Activity	Yes
Landscaped Area Maintenance	SWMS271
Park Furnishings and Play Equipment Maintenance	SWMS277

**5. COUNCIL SUPPORT**

All materials supplied, horticultural expertise and advice.

**6. HAS A SITE HAZARD AND RISK ASSESSMENT BEEN COMPLETED FOR THE PARKCARE SITE?**

Yes

**7. LIST THE PERSONAL PROTECTION EQUIPMENT REQUIRED FOR VOLUNTEERS WHILST WORKING ON THE SITE**

Gloves, Sunscreen, Gloves, Sunscreen, Vests, Insect Repellent, Masks, Earmuffs, Eye Protection

**8. POSSIBLE FUTURE FUNDING**

<b>Project</b>	<b>Funding source</b>

**9. PLAN WILL BE REVIEWED EVERY THREE YEARS – NEXT REVIEW DUE: 01/06/13**

**10. PLEASE LIST OTHER LOCAL OR REGIONAL MANAGEMENT PLANS OR STRATEGIES THAT THIS PLAN RELATES TO.**

<b>Name of document</b>	<b>Year it was produced</b>	<b>Produced by</b>
Generic Plans Of Management Parks	2001	SCC

**11. ASSESSED AS PER THE BUSHCARE/PARKCARE POLICY & PROCEDURES (POL09/78)**

Minor consultation