



## BASIN WALKING TRACK BUSHCARE ACTION PLAN

### CONTACT INFORMATION

<b>Group Name:</b>	Basin Walking Track Bushcare Group
<b>Contact:</b>	Ian Taffs
<b>Address:</b>	18 Clifton St, Sanctuary Point, NSW 2540
<b>Phone:</b>	4443 3133
<b>Email:</b>	
<b>Reserve Name:</b>	Basin Foreshore Reserve
<b>Reserve Number:</b>	BSP614 & Crown Reserve No. R89771
<b>Land Tenure:</b>	Crown Reserve/Council is Reserve Trustee
<b>Comm. Land Type:</b>	Foreshore

### 1. BUSHCARE GROUP GOALS

- a) Continue to provide support to and work with Council to maintain and promote the Basin Foreshore Walking Track.
- b) Continue to regenerate degraded areas of foreshore bushland by encouraging natural regenerate of local species through weed removal, working from healthy areas to more degraded areas.
- c) Educate residents bordering the foreshore reserve of the impact of dumping garden waste and growing exotic garden plants which can introduce and spread into native vegetation.
- d) Continue to work with staff and students of Sanctuary Point Public School with foreshore regeneration such seed collection, propagation and planting.
- e) Work with Council, and in consultation with local residents, to retain isolated large shade trees along the foreshore into small vegetation islands to plan for the replacement of old dying/diseased trees .

**2. SHOALHAVEN BUSHCARE GROUP ACTION PLAN** - To be in conjunction with attached site map.

NOTE: priority should be rated as H = High (within 12 months); M = Medium (1-3 years); L = Low

GROUP ACTION	PRIORITY	METHOD	TIMING
<p><b>SITE 1A</b>  <b>Wool Lane Site:</b> Primary weeding of Cape Ivy, Honey suckle, Asparagus fern, etc.</p> <p><b>Anson Creek:</b> Removal of Coastal Morning Glory, African Daisy, Montbretia, Kikuyu and maintain existing shrub plantings. Plant She Oaks on creek bank.</p>	M	<p>A variety of methods for control of weeds can be used depending on the site from Spot spraying to manual weed control. Any spraying of larger areas should be followed up by re-vegetation. This should be done in consultation with Council's Bushcare Support Worker or Bushcare Coordinator. The collection of native seeds from these areas should also be encouraged for the purpose of propagation to use in other areas of the reserve.</p>	On going

GROUP ACTION	PRIORITY	METHOD	TIMING
<p><b>Site 1 Fossil Point:</b></p> <p>1. Weed Asparagus fern, Blackberry, Daisy, Coastal Morning Glory. Control various exotic grasses invading native weeping frass. Hand weeds Paspalum, Pigeon Grass, Kikuyu and Buffalo. Plant She oaks, shrubs and herbs to shade out exotic grasses.</p> <p>2. Bushcare Group and SCC to coordinate small patch burns of areas of Kikuyu grass to stimulate regenerate of native grasses.</p> <p><b>Asparagus Point:</b> Weeds Asparagus fern, Daisy, Succulents, Mother of Millions, Freesias, Fishbone Fern, Blackberry, Montbretia etc. Weed Mutton wood, regenerate area on burnt slope west side.</p> <p>Install bench seat at Fossil Point</p>	<p>1. H 2. H</p>	<p>The following methods will be used:</p> <p>a) Identification of the most invasive exotic garden plants affecting the reserve and the production of a brochure outlining these plants and suggested native alternatives.</p> <p>b) Identify the problem areas and have the boundary surveyed so as to determine where weed control can be undertaken.</p> <p>c) Direct consultation with adjacent property owners to assist with garden weed replacement. This should be done with Council's Bushcare Support Worker or Bushcare Coordinator.</p>	<p>1-2years &amp; ongoing.</p>

GROUP ACTION	PRIORITY	METHOD	TIMING
<p><b>Site 2:</b> Weed shoreline and consolidate isolated trees into vegetation islands to ensure ongoing next generation of large trees, shrubs and groundcovers to maintain shade and reduce foreshore erosion.</p>	M	<p>In these areas the following methods will be used:</p> <ul style="list-style-type: none"> <li>a) On site meeting with SCC Bushcare Coordinator and Parks Officer to determine what trees will be consolidated and where</li> <li>b) Consultation with adjoining residents</li> <li>c) Bushcare Group and Council to map isolated trees on reserve using GPS and to ID vegetation islands</li> <li>d) Council to spray agreed areas, mulch and plant out</li> </ul>	2-3 years for revegetation of islands.
<p><b>Site 3:</b> Weeding of Asparagus fern, Crassula, Plectranthus, Freesias, Senna. Plant shrubs and herbs.</p>	H	Hand weed or spot spray, plant at densities of 2 per square metre.	On-going.

GROUP ACTION	PRIORITY	METHOD	TIMING
<p><b>Site 3-4:</b> Weed shoreline and two walkways to Walmer Ave: 65 Walmer walkway- weed Asparagus fern and control spread of Coral trees. Next to 77 Walmer walkway: spot spray and treat Honey suckle, Montbretia, Blackberry, Freesias. Revegetate natural drainage lines with low growing sedges and rushes.</p> <p>Install small low boardwalk over wet drainage areas to allow for all weather access for walkers.</p>	H	<p>a) Spot spray or hand weed. Consult with residents and Bushcare Coordinator, Parks Officer and Roads/Drainage Engineer for revegetation. of drains</p> <p>b) Bushcare Group and Council to identify wet areas and source funds for the construction of small raised boardwalks. Seek assistance from the Work for the Dole or Green Corps and/or Community Service Orders personel</p>	On going & 1-2 years for boardwalk.
<p><b>Site 4-6:</b> Weed shoreline. Weed Asparagus fern Under spotted gums near Paradise Beach Road.</p>	H	Hand weed or spot spray.	On-going.
<p><b>Site 6-7:</b> Weed Asparagus fern, Senna, Nightshade, Inkweed, Blackberry etc. Hand weed exotic grasses invading native vegetation. Maintain plantings along Clifton Creek. Plant She Oaks, shrubs and herbs.</p>	M	Hand weed or spot spray. Weed around plantings and replace as needed. Plant with endemic species at densities of 2 per square metre.	On-going Autumn for re plant.
<p><b>Site 7-8 Paradise Beach Reserve:</b> Weed fenced foreshore areas and along drains. Weed 181/183 Walmer Ave reserve for Senna, Blue passion flower, Asparagus fern, Coreopsis, spray Montbretia if required. Remove wire from fence and install 600mm bollards around vegetation Island on foreshore.</p>	H	Hand weed or spot spray as needed. Council to remove fence and install bollards.	On-going 2010 for fence.

GROUP ACTION	PRIORITY	METHOD	TIMING
<p><b>Site 8-9:</b> Weed regeneration/revegetation enclosures. Plant Lomandra, rushes and herbs where required. Weed and plant along Milson St drain with adjoining resident (Bushcare member).</p>	H	<p>c) Hand weed or spot spray, replace plants as required. Consult with residents and Bushcare Coordinator, Parks Officer and Roads/Drainage Engineer for revegetation of drains.</p>	<p>On-going, Autumn for reveg.</p>
<p><b>Site 9-10:</b> Maintenance of revegetation/regeneration enclosures and pathway. Plant Lomandra, rushes and herbs where required spray edge of invading buffalo grass in rushes/sand areas along the shoreline. Maintain walking track as required, including improving drainage under the track.</p> <p>Install additional bollards near salt marsh vegetation to protect from unauthorised mowing by residents.</p>	H	<p>Hand weed or spot spray. Replace plants as needed. Group to report any track maintenance required.</p>	<p>On-going 2010 for bollards.</p>
<p><b>Site 10-11:</b> Weed Mother of millions, Madeira vine, Crassula, jasmine. Maintain level area at 243 Walmer Ave. Plant more shrubs and herbs.</p>	H	<p>Hand weed or spot spray. Remove propagules from site. Plant using endemic species at densities of 2 per square metre.</p>	<p>On-going, Autumn for replant.</p>
<p><b>Site 11-12:</b> Weed Climbing groundsel African daisy, Small succulent, Blackberry, Fishbone fern, Paspalum, Asparagus fern.</p>	H	<p>Hand weed or spot spray.</p>	<p>On-going.</p>

GROUP ACTION	PRIORITY	METHOD	TIMING
<p><b>Site 13 Macleans Point:</b> Hand remove exotic grasses under declining She oaks. Control invading exotic grasses in native weeping grass areas. Continue the regenerate of native groundcover herbs and She oaks. Weed Cobblers peg, Fleabane, Paddy's Lucerne, Asparagus fern, Bridal creeper, Senna. Plant more shrubs and herbs. Council to maintain elevated boardwalk.</p>	H	Hand weed or spot spray. Bushcare to re-plant areas in consultation with Council's Bushcare Coordinator.	On-going, Autumn for replant.
<p><b>Site 14-15:</b> Periodically spot-spray Turkey Rhubarb on upper and lower foreshore reserve. Control of Fishbone fern and dwarf bamboo. Spray and treat Honeysuckle. Treat Blackberry. Weed Asparagus fern, Crassula, Montbretia, Climbing groundsel. Control invasive exotic grasses manually. Plant shrubs and herbs where required and appropriate.</p>	H	Hand weed or spot spray.	On-going, Autumn for replant
<p><b>Site 15-16:</b> Weed Senna, Honeysuckle, Agapanthus, Asparagus fern, Crassula, Lantana, Coreopsis, Blackberry, Spider plant</p>	M	Hand weed or spot spray.	On-going.
<p><b>Site 17:</b> Weed Honeysuckle, Paspalum, Fishbone fern, Black Eye Susan, Blackberry, and Asparagus fern. Manually control exotic grasses in planted areas. Control pennywort. Prepare costing for larger footbridge over drain.</p>	M	Hand weed or spot spray.	On-going 2010 for replacement of footbridge.

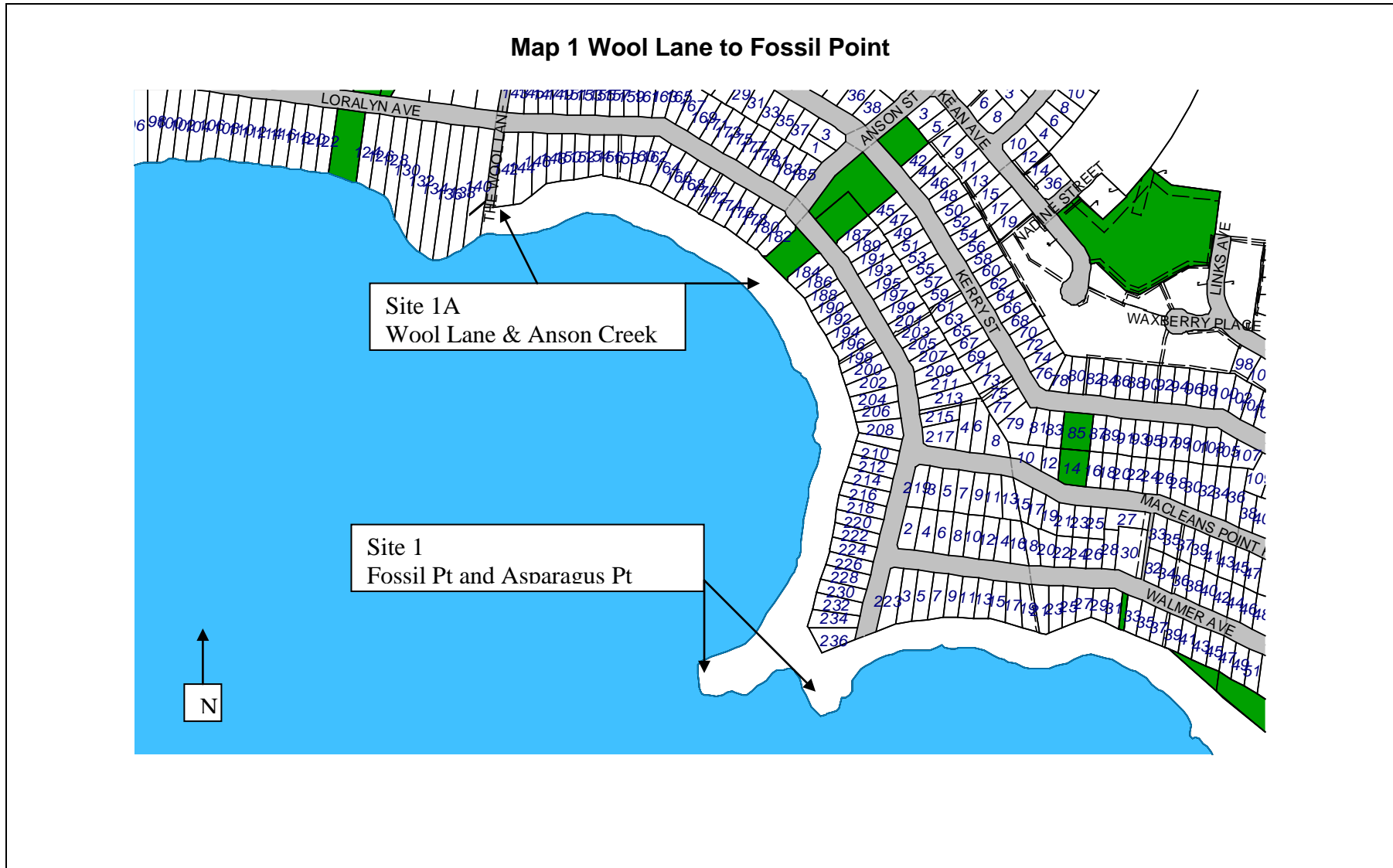
GROUP ACTION	PRIORITY	METHOD	TIMING
<p><b>Site 18 (3 Marie Street):</b> Boundary survey needed. Control Montbretia by hand pulling/digging. Replant with Lomandra. Remove Agapanthus and Spider plant. Spot-spray Turkey Rhubarb. Control spread of Climbing groundsel and Montbretia. Spot spray Ivy and Periwinkle. Weed Sollya, Fishbone fern, Formosan lily, Honeysuckle, Daisy, Senna, etc.</p>	H	Hand weed or spot spray.	On-going.
<p><b>Site 19 Attunga Hill:</b> Weed Sollya, Asparagus fern, Montbretia, Senna. Check regeneration of 5 Attunga Ave-where reserve was illegally cleared.</p>	M	Hand weed or spot spray.	On-going.
<p><b>Site 20 Irene St Pump Station:</b> Weed Honeysuckle, Morning Glory, Montbretia. Control spread of Climbing groundsel on slope. Maintain Lomandra plantings. Check slopes for Mother of Millions.</p>	H	Hand weed or spot spray.	On-going.
<p><b>Site 21-22:</b> As requested by resident, plant more Lomandra and shrubs on slope below 126 Greville Ave where Climbing groundsel was sprayed by SCC. Weed sprayed Montbretia, Senna, Climbing Groundsel, Honeysuckle, Asparagus fern. Weed bushfire regeneration area.</p>	M	Hand weed or spot spray.	On-going.
<p><b>Site 22-25:</b> Weed Blackberry, Fishbone fern, Paspalum, Senna, Formosan lily, Asparagus fern and spray Montbretias areas. Spray grass edge where it is overgrowing walking track.</p>	H	Hand weed or spot spray.	On-going.



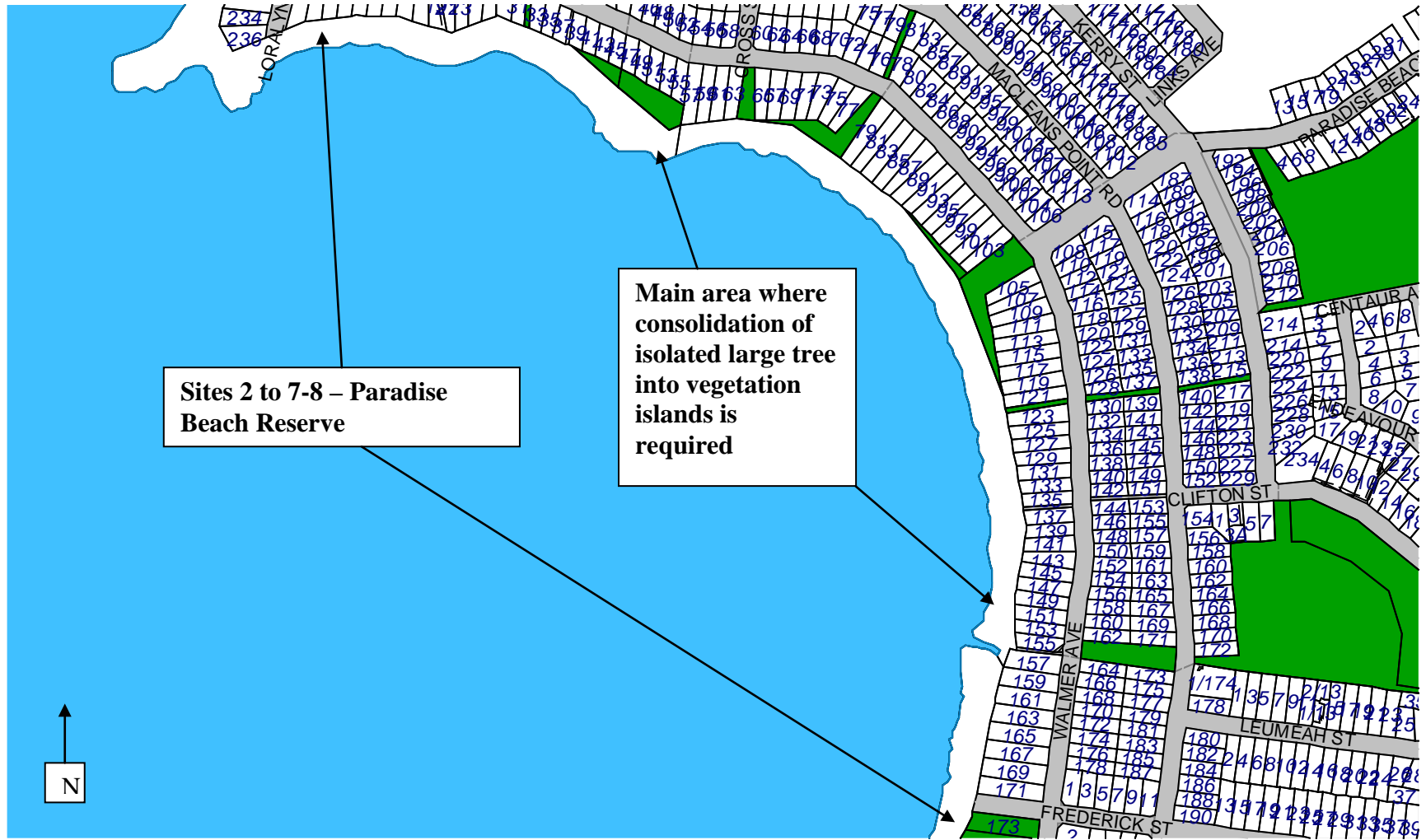
GROUP ACTION	PRIORITY	METHOD	TIMING
<b>Site 26:</b> Weed Asparagus fern, Senna and treat Blackberry. Council to survey reserve boundary.	H	Hand weed smaller infestations of Asparagus and Blackberry. Cut and paint Senna or spot spray larger infestations of Asparagus fern or Blackberry. Council to undertake boundary survey prior to any weed control being undertaken.	Spring Summer for spraying. Survey as required.
<b>All sites:</b> Where desirable, spot-spray large Lomandras to kill smothering exotic grasses. Plant Lomandra, native grasses, Dianella and herbs where required after weed removal or spraying.	M		

GROUP ACTION	PRIORITY	METHOD	TIMING
<p><b>Education</b></p> <p>Bushcare Group to work with Bushcare Support Worker and Bushcare Coordinator to seek funding for three pronged education projects as follows:</p> <p>a) Raise awareness of the negative impact of invasive exotic plants, dumping garden clippings and waste into the reserve, clearing native vegetation, building illegal assets on the reserve or illegally mowing sensitive areas of vegetation within the guidelines of Council Foreshore Reserve Policy.</p> <p>b) Bushcare Group and Council to work with the Sanctuary Point Public School to assist with seed collection, plant and planting on the reserve.</p> <p>c) Bushcare Group and Council to invite public on guided walks to highlight the areas flora and fauna and encourage new members to join the Bushcare Group.</p>	H	Council Bushcare Support Workers and Bushcare Coordinator to work with the Bushcare Group to develop an education program, including production of an educational resource kit for schools and guided walks.	On-going.

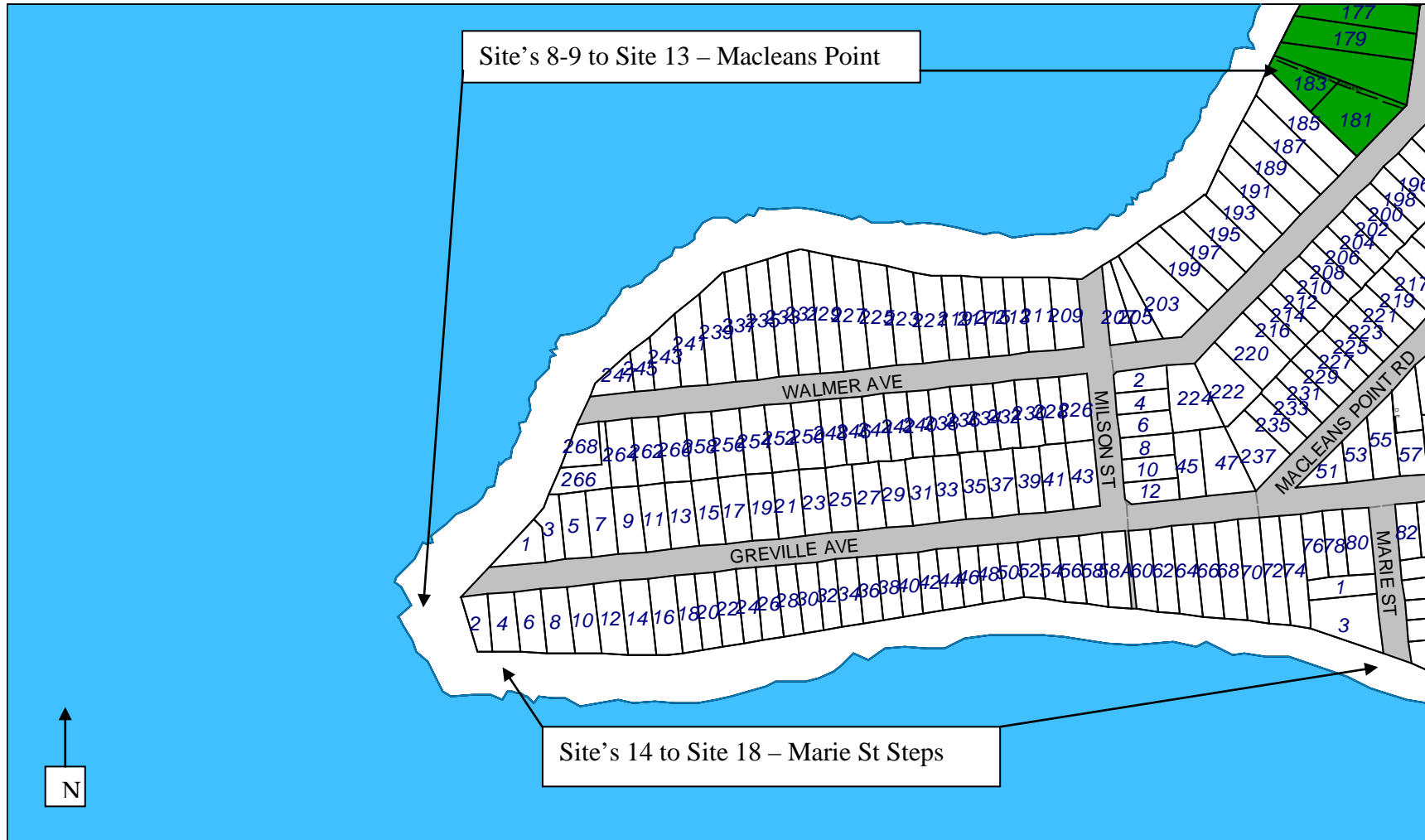
### 3. BUSHCARE GROUP ACTION PLAN MAP



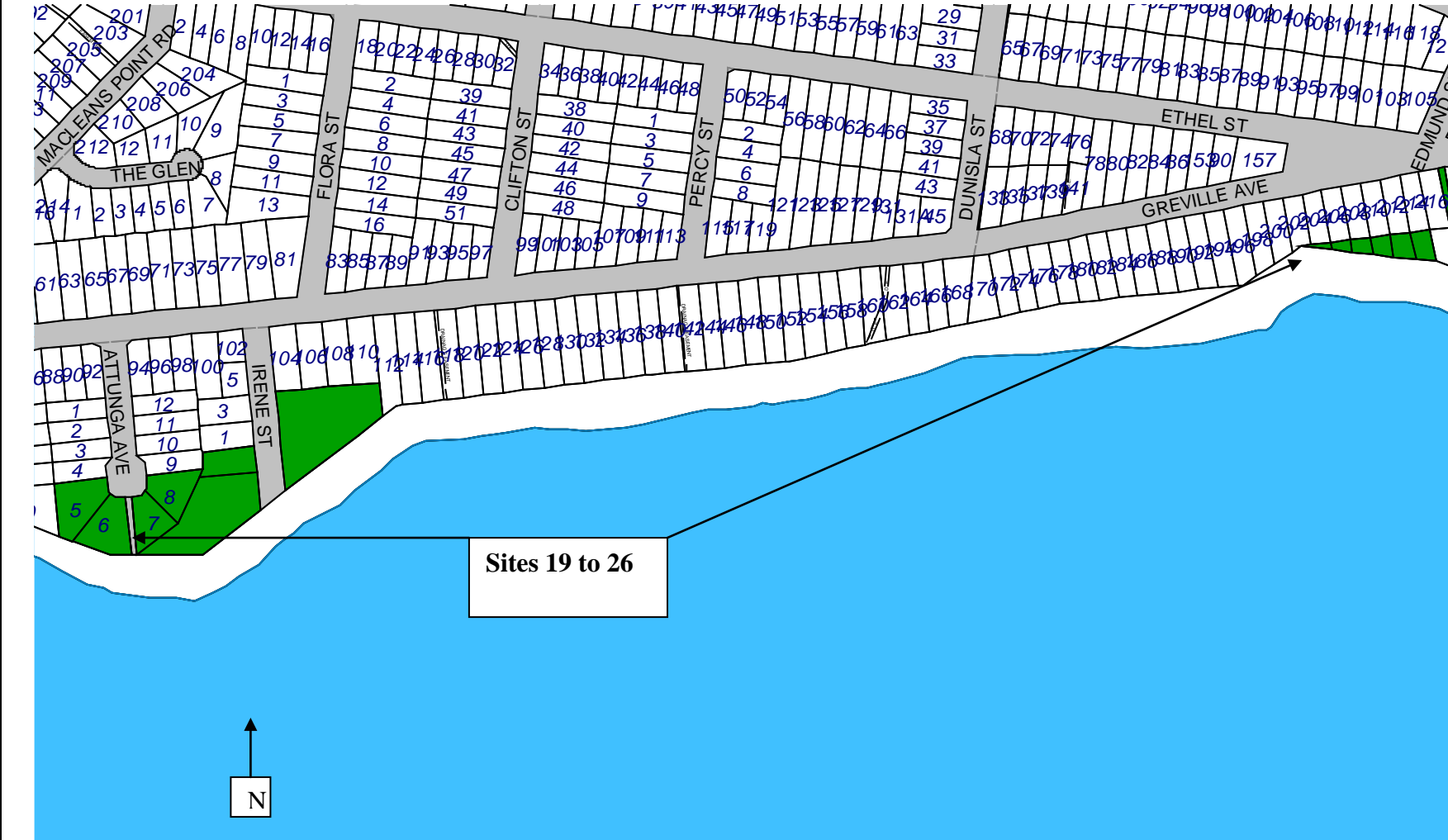
Map 2 – Site 2 to Paradise Beach Reserve



### Map 3 – Site 9 to Site 18 – Marie St



**Map 4 – Site 18 to Site 26**



#### 4. BUSHCARE GROUP OH&S AND EQUIPMENT REQUIREMENTS

TYPE OF ACTIVITY	✓	SWMS name included
Manual weed control (cut & paint, scrape & paint etc.)	✓	SWMS NR060
Chemical control (spraying of herbicides)	✓	SWMS NR040
Planting	✓	
Minor construction (walking track, fencing, outdoor furniture)	✓	
Propagation & seed collection	✓	
Education (school groups, field days etc.)	✓	NA
Other		

#### 5. COUNCIL SUPPORT

- a. Provision Tools, Equipment, PPE and Chemical
- b. Provision of Bushcare Support Workers for 6 sessions over 12 months
- c. Assistance with all aspects of walking track maintenance as well as other Council assets on the reserve
- d. Provision of mulch and plants within budget capacity
- e. Green waste tipping fees of up to \$24 per month
- f. Assistance with technical advice

#### 6. HAS A SITE HAZARD AND RISK ASSESSMENT BEEN COMPLETED FOR THE BUSHCARE SITE?

Yes ✓

Attach a copy of the site/s risk assessment to the plan.

#### 7. LIST THE PERSONAL PROTECTION EQUIPMENT (PPE) REQUIRED FOR VOLUNTEERS WHILST WORKING ON THE SITE

PPE EQUIPMENT REQUIRED	DATE ISSUED
First Aid Kit	2006
Gloves	2008
Sunscreen	2008
Hat	Bring own
Covered shoes	Bring own

Insect repellent	2008
------------------	------

**8. POSSIBLE FUTURE FUNDING**

PROJECT		FUNDING SOURCE			
Foreshore Program	Education	Southern Authority	Rivers	Catchment	Management

**9. PLAN WILL BE REVIEWED EVERY THREE YEARS – NEXT REVIEW DUE: APRIL 2013.**

Note: The group should review a summary of the Bushcare Policy & Procedures at the time of each annual review

**10. LIST OTHER LOCAL/REGIONAL MANAGEMENT PLANS OR STRATEGIES THAT THIS PLAN RELATES TO:**

DOCUMENT NAME	YEAR PRODUCED	PRODUCED BY
Foreshore Reserves Policy	2005	Shoalhaven City Council
Generic Community Land Plan of Management	2001	Shoalhaven City Council
St George Basin Estuary Management	1998	Shoalhaven City Council
St Georges Basin Flood Study	2001	Shoalhaven City Council
Shoalhaven Walking Track Strategy	2010	Shoalhaven City Council

**11. SUGGESTED SPECIES LIST FOR FUTURE SITE REVEGETATION**

OVERSTOREY TREES	
BOTANICAL NAME	COMMON NAME
Casuarina glauca	She Oak
Myoporum acuminatum	Boobiolla



<b>SHRUBS</b>	
<b>BOTANICAL NAME</b>	<b>COMMON NAME</b>
Breynia oblongifolia	Dwarf Apple
Correa reflexa	Native Fushia
Dodonaea triquetra	Common Hop Bush
Goodenia ovata	Hop Goodenia
Kunzea ambigua	Tick Bush
Myoporum boninense	Boobialla
Notelaea spp.	Mock Olive
Omalanthus populifolius	Bleeding Heart
Pittosporum revolutum	Rough Pittosporum
Pultenaea daphnoides	Bush Pea
Westringia fruticosa	Native Rosemary
<b>UNDERSTOREY (GRASSES, HERBS, CLIMBERS)</b>	
<b>BOTANICAL NAME</b>	<b>COMMON NAME</b>
Carex appressa	Tall sedge
Dianella caerulea	Nodding Blue Lily
Gahnia clarkei	Tall saw sedge
Hibbertia scandens	Golden Guinea Flower
Isolepis nodosa	Knobby Club Rush
Juncus kraussii	Dune slack rush / matting rush
Lomandra longifolia	Spiky Matt Rush
Plectranthus parviflorus	Native Coleus / Cockspur Flower

## 12. SITE WEED LIST

<b>NOXIOUS</b>	<b>OTHER</b>	<b>CONTROL METHOD</b>
Blackberry		Scrape and paint or Spray
	Bridal Creeper	Hand remove (make sure all tubers are removed)
	Honesuckle	Scrape and paint or spray
	Montbretia	Hand remove (make sure bulbs are removed)
	Senna (cassia)	Hand pull small plants or cut and paint
	Senecio temoides	Hand remove or spray
	Turkey Rhubarb	Scrape 'n paint or spray

**ATTACHMENT 1 - GROUP SUPPORT AND SKILL DEVELOPMENT NEEDS.** This information helps to identify gaps that may exist between what the group require to function effectively and what the group has available. **This focuses on the group, overall, not individual members.**

<i>Tick one box only</i>	<b>We are absolute beginners</b> - don't know a great deal	<b>We know a bit</b> - enough to get by most of the time	<b>We know quite a lot</b> - and we know when to seek help	There's probably not much more we can learn on this	<b>Comments</b>
<b>OH&amp;S</b> - develop and follow risk assessment					
<b>Develop and/or monitor Action Plan</b>					
<b>Plant identification</b> -local native plants					
<b>Weed identification and control methods</b>					
<b>Bush regenerate methods</b>					
<b>Seed collection and propagation</b>					
<b>Group planning and decision making</b>					
<b>Managing neighbour relations</b>					
<b>Community education</b> - schools, neighbours, etc.					
<b>Volunteer/group member recruitment</b>					
<b>Preparing grant applications</b>					

<p>List below the 10 most common plants that are indigenous to the area:</p> <ol style="list-style-type: none"> <li>1.</li> <li>2.</li> <li>3.</li> <li>4.</li> <li>5.</li> <li>6.</li> <li>7.</li> <li>8.</li> <li>9.</li> <li>10.</li> </ol>	<p>List below the 10 most common plants that are <i>not</i> indigenous to the area:</p> <ol style="list-style-type: none"> <li>1.</li> <li>2.</li> <li>3.</li> <li>4.</li> <li>5.</li> <li>6.</li> <li>7.</li> <li>8.</li> <li>9.</li> <li>10.</li> </ol>
<p>Can all of the regular group volunteers identify these?  Yes <input type="checkbox"/>                      No <input type="checkbox"/></p>	<p>Can all of the regular group volunteers identify these?  Yes <input type="checkbox"/>                      No <input type="checkbox"/></p>

**BUSHCARE GROUP NAME: BASIN WALKING TRACK    COORDINATOR NAME: IAN TAFFS.....**  
**SIGNATURE: .....    DATE:...../...../.....**