

Tomerong Community Forum

PO Box 1100,
Tomerong NSW 2540

www.tomerong.com

email; tomerongforum@hotmail.com

Date; 30th June 2013

Ref; Community Meeting re Electoral Boundary 29/06/2013

To All Attendees,

Firstly and foremost I would like to thank you sincerely for attending the community meeting.

As stated the attending councillors will be raising the issue at the extraordinary council meeting on Tuesday, to lobby support from Council over a range of issues concerning the proposed electoral boundary change.

Here are some of the concerns about the proposed boundary changes that you raised at the meeting. [Some are about Tomerong specifically; others are concerns for the whole area]

- It will divide the village unity, the village and its 500 mail recipients covered by the postal boundary need to be in one electorate to maintain the social and economic sustainability of the village and environs.
- It will divide and effect the school catchment.
- It will cause concerns with policing issues.
- It will divide the representations of local members to community issues especially related to above.
- It will cause the halving of our major employment centres namely Albatross / South Nowra and raise concerns re the University at West Nowra.
- People who live in the proposed new Kiama electorate will vote absentee in their own local community.
- It will create a loss of cultural affinity in Tomerong who is extremely closely aligned to the Bay& Basin [Jervis Bay and St Georges Basin] communities, who have a long history of working together on many issues at both state and local govt levels.
- For further information regarding this issue see www.redistribution.nsw.gov.au

I have attached the objection form as a separate attachment if required.

[2]

Please send your objections in before the closing date of 17th July and urge your local members to assist us to keep us all united.

If any assistance is required please do not hesitate to contact the Tomerong Community Forum at tomerongforum@hotmail.com and remember we meet at the hall on the 2nd Monday of the month at 7:30 pm.

A copy of this letter is being sent to

1. Shelley Hancock Member for South Coast
2. Gareth Ward Member for Kiama
3. Jo Gash Mayor Shoalhaven City Council [Attendee at meeting]
4. All Shoalhaven City Councillors [Councillors Patricia White & Alan Baptist from Ward 3 in attendance]
5. Ann Sudmalis Candidate for Federal seat of Gilmore [Attendee at meeting]

Kind Regards and Many Thanks

Peter Allison

Chairperson

Tomerong Community Forum

ADDENDUM REPORT OF GENERAL MANAGER**ORDINARY MEETING****FRIDAY, 21 JUNE 2013****FINANCE AND CORPORATE SERVICES****1. Proposed Changes to State Electoral Boundaries****File 14560E****PURPOSE:** Delivery Program Activity: 4.2.1.3

To notify Council of the proposed changes to the State Electoral Boundaries that are occurring within the Shoalhaven City Council area.

This matter is presented as an Addendum report as the proposed State Electoral Boundaries proposal went on public exhibition on Monday 17 June and any submission needs to be with the NSW Electoral Commission by 17 July 2013, before the next Council meeting.

Submitted for Council's consideration.

OPTIONS

1. Council may present a submission on the proposed boundary adjustment
2. As the proposed boundaries only affect the internal electoral boundaries within the City, no submission on the proposed State Electoral Boundaries be made.

DETAILS

Advice has been received from the NSW Electoral Commission alerting Council of proposed changes to the State Electoral Boundaries. This is necessary due to a shift in population which has resulted in a variation of more than 10% between the highest and lowest State Electoral Districts.

The role of Council in the process is to make the maps available for inspection in the Council offices. Those maps were placed on the Council Notice Board on 17 June. Advertising is coordinated through the NSW Electoral Commission.

In summary, the report proposal provides that robust enrolment trends in the South Coast district and relative declines in the Illawarra region have resulted in it becoming necessary for the Kiama District to cross the Shoalhaven River to gain the South West Nowra region from the South Coast District. The proposed adjustment will affect those 3947 residents who reside west of the Princes Highway from the Shoalhaven River to slightly north of Tomerong, and residents in and around the Falls Road and parts of Jervis Bay Road areas. Tomerong remains in the South Coast Electorate.

The proposed new area of the Kiama Electorate will incorporate the area west of the Princes Highway to Currumbene Creek. The eastern boundary of the electorate then follows the western side of Currumbene Creek. The boundary then extends south west from the southern side of Currumbene Creek, extending along the rear boundaries on properties located on the western side of Knoll Parade to Jervis Bay Road. It then extends along Pine Forest Road toward the Princes Highway via Yerunda Road and Hawken Road. The southern boundary of the Kiama electorate then extends along Turpentine Road across to Deans Gap Road to Yalwal Road and from a point on Yalwal Road through Danjera Creek and through the Morton National Park to Braidwood Road to the City Boundary with Palerang Shire Council.

The plans showing the proposed boundary changes are included in the attachments.

Kiama loses part of the Robertson area to the Goulburn district.

These changes will result in the Kiama electorate comprising of 52,294 electors, being .090% below the quota and the South Coast Electorate comprising of 51,208 electors, 2.96% below the quota.

Council is entitled to present a submission to the proposed boundary change should it so desire. As the boundary adjustment is within the City of Shoalhaven, it is submitted that there is no adverse impacts arising from the proposal.

A copy of the maps have been provided to the Community Consultative Bodies in the affected area in order for them to present a submission to the NSW Electoral Commission if they consider it warranted.

FINANCIAL IMPLICATIONS:


There are no financial implications that arise from this report

COMMUNITY ENGAGEMENT:

The Parliamentary Electorates and Elections Act requires Council to participate in this process by making the proposed maps available for inspection in the Council offices. The NSW Electoral Commission is responsible for advertising as well as media releases.

P.J Dun
DIRECTOR FINANCE & CORPORATE SERVICES

R.D Pigg
GENERAL MANAGER



STATE OF NEW SOUTH WALES

MAP OF THE PROPOSED ELECTORAL DISTRICT OF

KIAMA

as determined by the Electoral Districts Commissioners,
pursuant to the Parliamentary Electorates and Elections Act, 1912
Constitution Act, 1902

0

3.5

7

10.5

14

Kilometres

Further information, including copies of this map,
may be obtained at: www.redistribution.nsw.gov.au

PROPOSED ELECTORAL DISTRICTS

PUBLISHED ON 17 JUNE 2013

SUGGESTIONS OR OBJECTIONS

Objections may be lodged via:-

The web	www.redistribution.nsw.gov.au	No later than midnight 17 July 2013
Fax	(02) 92905949	No later than midnight 17 July 2013
Post	GPO Box 832 Sydney NSW 2001	No later than midnight 17 July 2013
In person	at the Office of the Electoral Districts Commissioners c/o NSW Electoral Commission Level 25, 201 Kent St Sydney	No later than 5pm 17 July 2013

2004 Redistribution Electoral District names and boundaries
(as Determined -s14 of the Parliamentary Electorates and Elections Act)

2013 Redistribution Electoral District -
Proposed names and boundaries

Local Government Area names and boundaries
(as at June 2013)

KIAMA

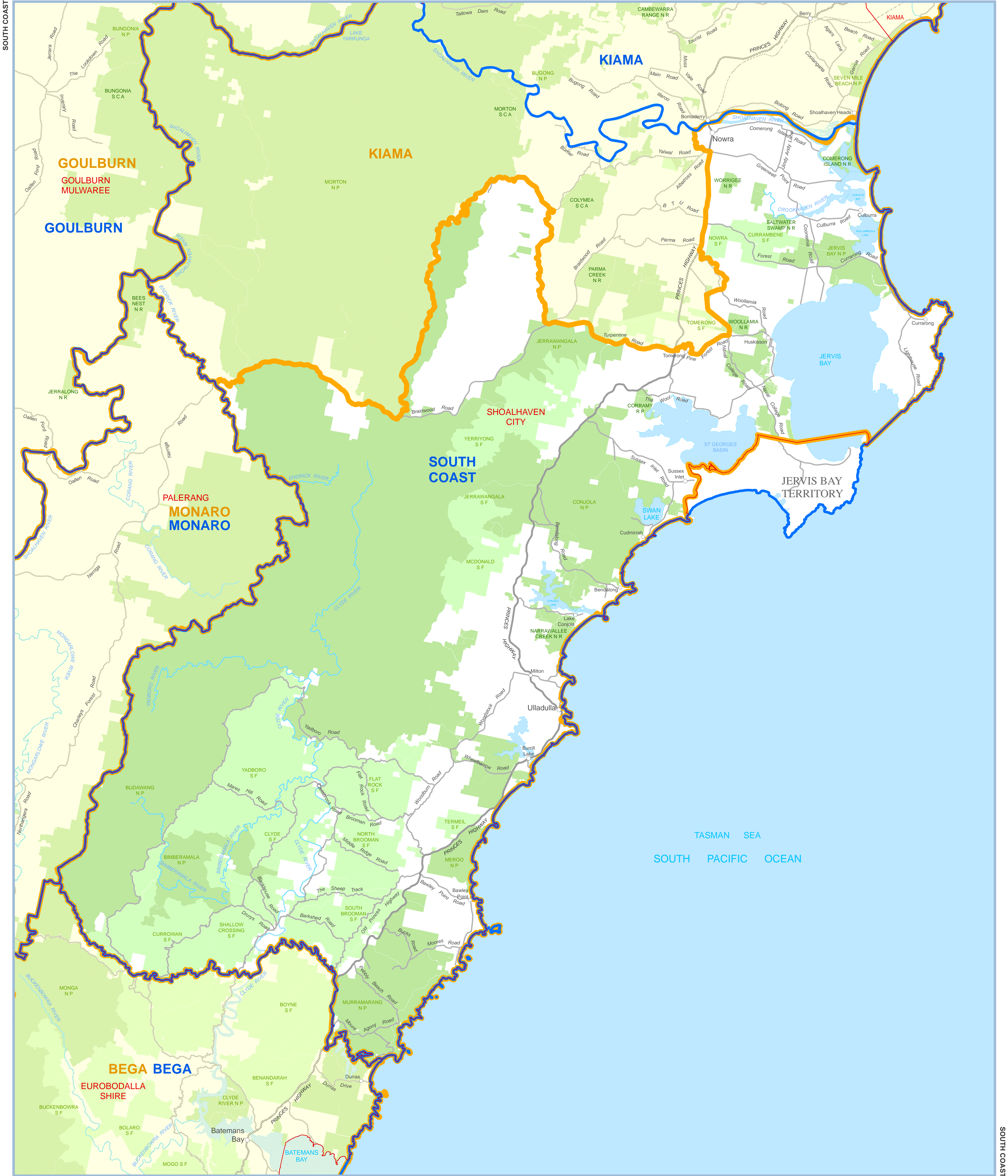
KIAMA

KIAMA

© Land and Property Information (a division of the Department of Finance and Services) 2013
© NSW Electoral Commission 2013

Disclaimer: This map has been generated by various sources and is provided for information purposes only. Land and Property Information (LPI), a division of the Department of Finance and Services and NSW Electoral Commission (NSWEC) do not warrant or represent that the information is free from errors or omission, or that it is exhaustive. LPI and NSWEC give no warranty in relation to the information. LPI and NSWEC accept no liability for loss, damage, or costs that you may incur relating to any use or reliance upon the information in this map.





2004 Redistribution Electoral District names and boundaries
(as Determined -s14 of the Parliamentary Electorates and Elections Act)

2013 Redistribution Electoral District -
Proposed names and boundaries

Local Government Area names and boundaries
(as at June 2013)

© Land and Property Information (a division of the Department of Finance and Services) 2013
© NSW Electoral Commission 2013

Disclaimer: This map has been generated by various sources and is provided for information purposes only. Land and Property Information (LPI), a division of the Department of Finance and Services and NSW Electoral Commission (NSWEC) do not warrant or represent that the information is free from errors or omission, or that it is exhaustive. LPI and NSWEC give no warranty in relation to the information. LPI and NSWEC accept no liability for loss, damage, or costs that you may incur relating to any use or reliance upon the information in this map.

KIAMA
KIAMA
KIAMA

NSW
STATE OF NEW SOUTH WALES
MAP OF THE PROPOSED ELECTORAL DISTRICT OF
SOUTH COAST
as determined by the Electoral Districts Commissioners,
pursuant to the Parliamentary Electorates and Elections Act, 1912
Constitution Act, 1902

0 7 14 21 28
Kilometres

Further information, including copies of this map,
may be obtained at: www.redistribution.nsw.gov.au

PROPOSED ELECTORAL DISTRICTS
PUBLISHED ON 17 JUNE 2013

SUGGESTIONS OR OBJECTIONS

Submissions may be lodged via:-
The web www.redistribution.nsw.gov.au No later than midnight 17 July 2013
Fax (02) 92905949 No later than midnight 17 July 2013
Post GPO Box 832 Sydney NSW 2001 No later than midnight 17 July 2013
In person at the Office of the Electoral Districts Commissioners
c/o NSW Electoral Commission
Level 25, 201 Kent St Sydney No later than 5pm 17 July 2013

