

<p style="text-align: center;"><b>Shoalhaven Council</b> <b>Vegetation Vandalism Survey</b> <b>July 2013</b></p>
--

- Q1. Are you aware of the recent vegetation vandalism on the sand dunes along Collingwood Beach?**
- ☐ Yes
  - ☐ No
- Q2. What importance do you place on the native vegetation, including trees, growing on the sand dunes at Collingwood Beach?**
- ☐ Very important
  - ☐ Important
  - ☐ Somewhat important
  - ☐ Not very important
  - ☐ Not at all important
- Q3. How supportive are you of Council's need to address the issue of vegetation vandalism on public land?'**
- ☐ Completely supportive
  - ☐ Supportive
  - ☐ Somewhat supportive
  - ☐ Not very supportive
  - ☐ Not at all supportive
- Q4. Considering that the prosecution/fine option isn't effective, which of the following do you think would be effective in reducing vegetation vandalism? (MR)**
- ☐ Large mesh banner
  - ☐ Large metal sign
  - ☐ Reward for information leading to a successful prosecution
  - ☐ Cameras
  - ☐ Other (please specify)\_\_\_\_\_
  - ☐ None of the above
- Q5. How supportive are you of Council implementing the 3 month trial and using a large banner on the sand dune to deter vegetation vandalism?**
- ☐ Completely supportive
  - ☐ Supportive
  - ☐ Somewhat supportive
  - ☐ Not very supportive
  - ☐ Not at all supportive
- Q6. Thinking about the use of a large banner on the sand dune, how likely do you believe it will be in deterring future acts of vegetation vandalism in the area?**
- ☐ Very likely
  - ☐ Likely
  - ☐ Somewhat likely
  - ☐ Not very likely
  - ☐ Not at all likely

**Why do you say that?** .....

**Q7. Thinking about the use of a large banner on the sand dunes to deter vegetation vandalism, how will it impact on your enjoyment of the area?**

- ☐ Positive impact
- ☐ Neutral
- ☐ Negative impact

**Why do you say that?** .....

**Q8. Thinking about beach users (residents and visitors), how important is the dune vegetation in providing screening from overlooking houses?**

- ☐ Very important
- ☐ Important
- ☐ Somewhat important
- ☐ Not very important
- ☐ Not at all important

**Q9. Which category do you belong too?**

- ☐ Full time resident
- ☐ Part time resident
- ☐ Visitor/Tourist

**Q10. Age:**

- ☐ 16-21
- ☐ 22-29
- ☐ 30-39
- ☐ 40-49
- ☐ 50-64
- ☐ 65+

**Q11. Gender**

- ☐ Male
- ☐ Female

*That is the end of the survey. Thank you for your time.*

## Vegetation Vandalism study - August 2013

House with a view      House without a view      Public pathway

### Q1. Are you aware of the recent vegetation vandalism on the sand dunes along Collingwood Beach?

Count	20	37	76
Total	100%	100%	100%
Yes	55%	76%	82%
No	45%	24%	18%

### Q2. What importance do you place on the native vegetation, including trees, growing on the sand dunes at Collingwood Beach?

Mean ratings 1 = not at all important, 5 = very important

Count	20	37	76
Total	100%	100%	100%
Very important	55%	57%	76%
Important	5%	43%	17%
Somewhat important	35%	0%	4%
Not very important	5%	0%	0%
Not at all important	0%	0%	3%
T2Box	60%	100%	93%
Overall mean rating (n = 133)	4.54		

### Q3. How supportive are you of Council's need to address the issue of vegetation vandalism on public land?

Mean ratings 1 = not at all supportive, 5 = completely supportive

Count	20	37	76
Total	100%	100%	100%
Completely supportive	35%	46%	74%
Supportive	30%	46%	17%
Somewhat supportive	25%	5%	1%
Not very supportive	5%	3%	1%
Not at all supportive	5%	0%	7%
T2Box	65%	92%	91%
Overall mean rating (n = 133)	4.36		

### Q4. Considering that the prosecution/fine option isn't effective, which of the following do you think would be effective in reducing vegetation vandalism?

Count	20	37	76
Total	100%	100%	100%

Large metal sign	20%	14%	16%
Cameras	20%	38%	34%
Reward for information leading	25%	51%	41%
Large mesh banner	10%	35%	34%
Other	45%	8%	30%
None of the above	15%	5%	8%

**Q5. How supportive are you of Council implementing the 3 month trial and using a large banner on the sand dune to deter vegetation vandalism?**

Mean ratings 1 = not at all supportive, 5 = completely supportive

Count	20	37	76
Total	100%	100%	100%
Completely supportive	10%	41%	45%
Supportive	20%	14%	18%
Somewhat supportive	5%	19%	13%
Not very supportive	10%	14%	11%
Not at all supportive	55%	14%	13%
T2Box	30%	54%	63%
Overall mean rating (n = 133)	3.44		

**Q6. Thinking about the use of a large banner on the sand dune, how likely do you believe it will be in deterring future acts of vegetation vandalism in the area?**

Mean ratings 1 = not at all likely, 5 = very likely

Count	20	37	76
Total	100%	100%	100%
Very likely	0%	14%	14%
Likely	15%	16%	16%
Somewhat likely	15%	19%	36%
Not very likely	15%	30%	16%
Not at all likely	55%	22%	18%
T2Box	15%	30%	30%
Overall mean rating (n = 133)	2.71		

**Q7a. Thinking about the use of a large banner on the sand dunes to deter vegetation vandalism, how will it impact on your enjoyment of the area?**

Count	20	37	76
Total	100%	100%	100%
Positive impact	15%	11%	22%
Neutral	30%	49%	45%
Negative impact	55%	41%	33%

**Q8. Thinking about beach users (residents and visitors), how important is the dune vegetation in providing screening from overlooking houses?**

*Mean ratings 1 = not at all important, 5 = very important*

Count	20	37	76
Total	100%	100%	100%
Very important	5%	14%	37%
Important	5%	30%	21%
Somewhat important	5%	16%	14%
Not very important	25%	30%	13%
Not at all important	60%	11%	14%
T2Box	10%	43%	58%
Overall mean rating (n = 133)	3.12		

**Q9. Which category do you belong to?**

Count	20	37	76
Total	100%	100%	100%
Full time resident	45%	86%	67%
Part time resident	25%	8%	13%
Visitor/Tourist	30%	5%	20%

**Q10. Age:**

Count	20	37	76
Total	100%	100%	100%
16-21	5%	3%	4%
22-29	0%	0%	7%
30-39	15%	11%	5%
40-49	40%	11%	14%
50-64	25%	19%	43%
65+	15%	57%	26%

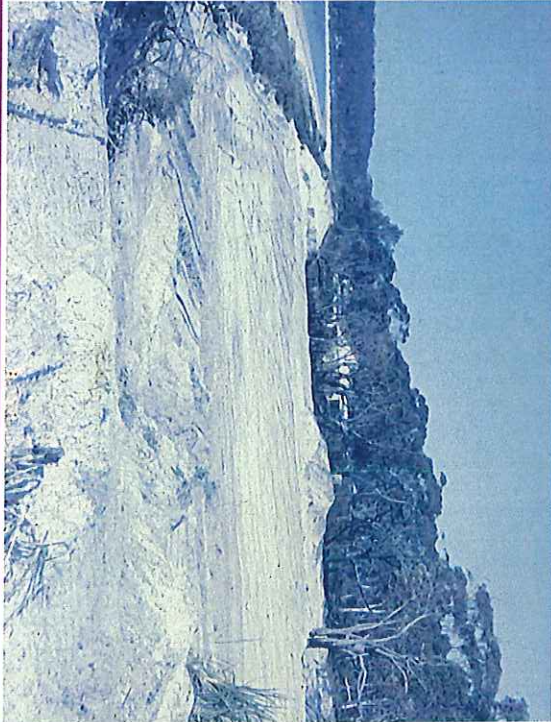
**Q11. Gender**

Count	20	37	76
Total	100%	100%	100%
Male	50%	46%	46%
Female	50%	54%	54%

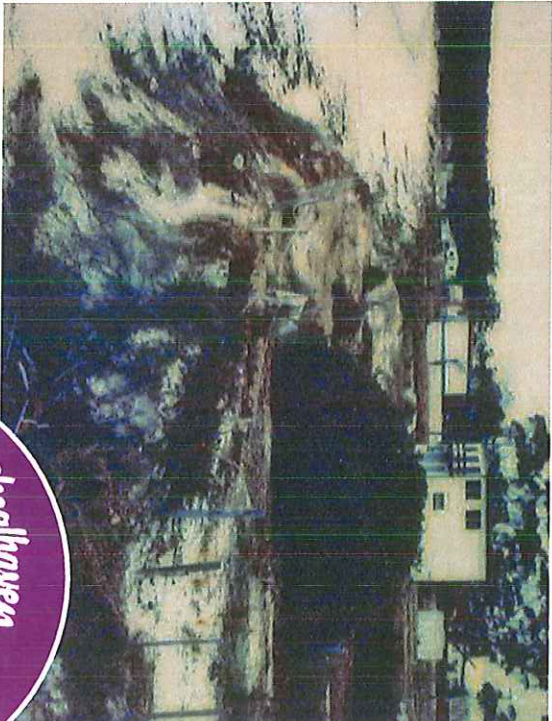
# WORKING TOGETHER – PRESERVING OUR DUNES – PROTECTING COMMUNITIES AND ASSETS



1966 PRE DEVELOPMENT



DURING DEVELOPMENT



1974 - POST STORM