



BASIN BUSHCARE ACTION PLAN – WIRRACOO WALK

Document Number: D12/124001 • **Adopted:** • **Minute Number:** • **File:** 26280E •
Produced By: Planning & Development Services • **Review Date:**

CONTACT INFORMATION

Group Name:	Basin Bushcare
Contact:	Norm Webb
Reserve Name:	Lady Denman Heritage Complex and Wirracoo Walk
Reserve Number:	BHU603
Land Tenure:	Crown Land Trust Manager/Care & Control

1. BUSHCARE GROUP GOALS

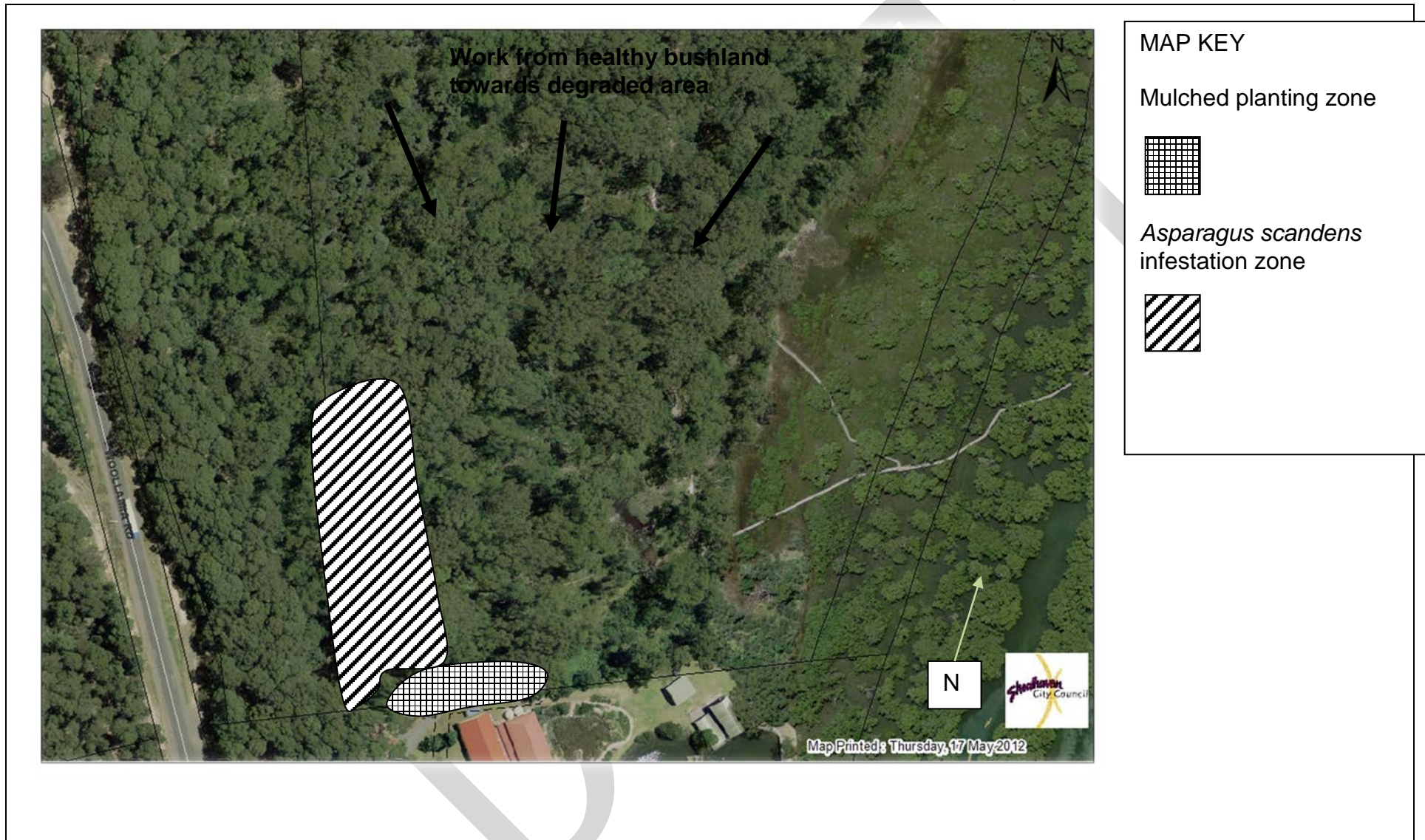
<p>Aim</p> <p>Improve the biodiversity and the passive recreation opportunities of the Wirracoo Walk and Lady Denmen Crown Land reserves.</p> <p>Objectives:</p> <ol style="list-style-type: none">1. Improve the Wirracoo Walking Track as per the Shoalhaven Walking Track Strategy.2. Strategic control and removal of key invasive weed species.

2. SHOALHAVEN BUSHCARE GROUP ACTIVITIES TABLE (to be in conjunction with attached site map)
NOTE: Priority should be rated as H = High (within 12 months); M = Medium (1-3 years); L = Low

GROUP ACTION (these should relate to your project description)	PRIORITY	METHOD	TIME
Seek support and approval from the NSW Land and Property Management Authority to undertake bush regeneration, weed control and track upgrade works on Crown Land Lot 7300 DP1128666	H	Bushcare Coordinator to seek approval from NSW LPMA	2012
<p>Continue to undertake control of key weed species based on threat to the reserve's biodiversity and the ability of weed to spread further within the region. Target weed control works should be in following priority order:</p> <ol style="list-style-type: none"> 1. Lantana (<i>Lantana camara</i>) 2. Winter Senna (<i>Senna pendula</i> sp. <i>Pendula</i>) 3. Bitou Bush (<i>Chrysanthemoides rotunda</i> spp <i>monilifera</i>) 4. Asparagus Fern (<i>Asparagus scandens</i>) 5. Crofton Weed (<i>Ageratina adenophora</i>) 	H	<p>Undertake weed control as follows</p> <ol style="list-style-type: none"> 1. Cut and paint and apply 50/50 glyphosate/water onto cut stump 2. As per 1 although small plants can be hand pulled 3. As per 1 & 2 4. Larger infestations can be sprayed using Metsulfon Methyl at recommendation rates, smaller isolated infestations should be dug out ensuring the crown is removed. 5. Spot spray using glyphosate at 2% dilution rates 	On going
Create a mulched buffer revegetation zone on the boundary of	M	Heavily mulch area and plant with	2012 - 13

GROUP ACTION (these should relate to your project description)	PRIORITY	METHOD	TIME
the southern end of the Wirracoo Walk area, Lady Denman Heritage Complex, using species from the plans suggested revegetation list.		robust native species as per recommended species in plan	
Seek financial assistance to upgrade the Wirracoo Walk infrastructure (see appendix 1 for walking track location)	L	Bushcare Coordinator to apply for funding	As the opportunity arises

3. BUSHCARE GROUP ACTION PLAN MAP



4. BUSHCARE GROUP WHS & EQUIPMENT REQUIREMENTS

Type of Activity	Yes	SWMS name included
Manual weed control (cut & paint, scrape and paint etc)	√	SWMSNR040 Weed Control Activities
Chemical control (spraying of herbicides)	√	SWMSNR040 Weed Control Activities
Planting	√	SWMSNR030 Planting, Propagation and Seed Collection
Minor construction (walking track, fencing, outdoor furniture)		
Propagation & seed collection		
Education (school groups, field days etc)		
Other		

5. COUNCIL SUPPORT

- a. Technical advice and support
- b. Provision of PPE equipment
- c. Supply tools, herbicide and materials within the constraints of budget
- d. Administration support
- e. Assistance with grant application, administration and management.
- f. Graphic design and printing assistance
- g. Assistance with facilitation and negotiation with third parties

6. HAS A SITE HAZARD AND RISK ASSESSMENT BEEN COMPLETED FOR THE BUSHCARE SITE?

Yes

7. LIST THE PERSONAL PROTECTION EQUIPMENT REQUIRED FOR VOLUNTEERS WHILST WORKING ON THE SITE

PPE Equipment Required	Date issued
First Aid Kit	2010
Gloves	2010
Sunscreen	2010
Insect repellent	2010

8. POSSIBLE FUTURE FUNDING

Project	Funding source
Assistance with weed control and walking track upgrade	NSW Land and Property Management Authority or Shoalhaven Tourism Grant

9. PLEASE LIST OTHER LOCAL OR REGIONAL MANAGEMENT PLANS OR STRATEGIES THAT THIS PLAN RELATES TO

Name of document	Year it was produced	Produced by
Shoalhaven Walking Track Strategy	Draft as of 1/6/2012	Shoalhaven City Council

10. RECOMMENDED PLANTING/REVEGETATION SPECIES LIST

SHRUBS	
Botanical	Common
<i>Acacia floribunda</i>	Sally Wattle
<i>Acacia longifolia spp longifolia</i>	Coastal Wattle
<i>Acacia suaveolens</i>	Sweet Scented Wattle
<i>Acacia ulicifolia</i>	Prickly Moses
<i>Acmena smithii</i>	Lilly Pilly
<i>Allocasuarina littoralis</i>	Forest She Oak
<i>Casuarina glauca</i>	Swamp She Oak
<i>Clerodendrum tomentosum</i>	Hairy Clerodendrum
<i>Hibbertia saligna</i>	Tall Guinea Flower
<i>Leptospermum polygalifolium</i>	Lemon Scented Tea Tree
<i>Melaleuca ericifolia</i>	Swamp Paperbark
<i>Monotoca eliptica</i>	Tree Broom Heath
<i>Notelea longifolia</i>	Mock Olive
<i>Pittosporum spinescens</i>	Orange Boxthorn
<i>Pittosporum undulatum</i>	Sweet Pittosporum
UNDERSTOREY (grasses, herbs, climbers)	
Botanical	Common
<i>Billardaria scandens</i>	Apple Dumplings
<i>Clematis aristata</i>	Old Mans Beard
<i>Dianella caerulea</i>	Flax Lily
<i>Gahnia sieberana</i>	Saw Sedge
<i>Geranium solanderi</i>	Creeping Geranium
<i>Glycine clandestinum</i>	Slender Love Creeper
<i>Hardenbergia violaceae</i>	False Sarsaparilla
<i>Hibbertia scandens</i>	Guinea Flower
<i>Isolepis nodosa</i>	Swamp Rush
<i>Juncus kraussii</i>	Native Rush
<i>Kennedia prostrata</i>	Dusky Coral Pea
<i>Kennedia rubicunda</i>	Running Postman
<i>Lomandra longifolia</i>	Spiny Matt Rush
<i>Microlaena stipoides</i>	Weeping Grass

11. SITE WEED LIST (See attached Bush Regeneration Information Sheets for details)

Noxious	Environmental	Control Method
Asparagus asparagoides (Bridal Veil Creeper)		Crown out underground growing parts and remove from site. With larger infestation it is more effective to release the biological control agent which is a rust fungus
Rubus fruticosus (Blackberry)		Scrape and paint canes during flower or fruit, larger infestations can be sprayed

		with a selective herbicide
Senecio madagascariensis (Fireweed)		Hand pull and remove seed from site
Ligustrum sinense (Small Leafed Privet)		Larger plants should be cut and painted smaller plants can be hand pulled
Chrisanthemoides monulifera subsp rotunda (Bitou Bush)		Larger plants should be cut and painted smaller plants can be hand pulled – large infestation should be sprayed with a non selective herbicide
	Asparagus aethiopicus (Asparagus Fern)	Crown out underground growing parts and remove from site - larger infestations can be sprayed with a selective herbicide
	Asparagus plumosus (Climbing Asparagus)	Crown out underground growing parts and remove from site - larger infestations can be sprayed with a selective herbicide
	Senna pendula (Cassia)	Larger plants should be cut and painted smaller plants can be hand pulled
	Passiflora edulis (Passionfruit)	Hand pull vines and leave on site
	Lonicera japonica (Honeysuckle)	Scrape and paint or spot spray larger infestations with a non-selective herbicide such as Roundup
	Solanum nigrum (Blackberry Nightshade)	Hand pull
	Stenotaphrum secundatum (Buffalo Grass)	Spot spray in winter using low dilution rates of a non-selective herbicide
	Sporobolus africanus (Parramatta Grass)	Spot spray before plant set seeds using 10 – 15ml per 1litre of water of glyphosate
	Paspalum dilatatum (Paspalum)	Spot spray plant with non selective herbicide at recommended rates of 1ml per 100ml
	Setaria incrassata (Pigeon Grass)	Spot spray plant with non selective herbicide at recommended rates of 1ml per 100ml
	Erharta erecta (Erharta)	Spot spray plant with non selective herbicide at recommended rates of 1ml per 100ml
	Axonopus fissifolius (Carpet Grass)	Spot spray plant with non selective herbicide at recommended rates of 1ml per 100ml

	Cynodon dactylon (Couch Grass)	Smaller infestations can be dug out by hand but be sure to remove all the rhizomes, larger areas can be spot sprayed with a non selective herbicide or covered in black plastic to solarise the infestation
	Sida rhombifolia (Paddys Lucern)	Hand pull smaller infestation of spot spray with a non-selective herbicide and mulch area heavily
	Physallis peruvian (Cape Gooseberry)	Hand pull and remove seed pods
	Aster subulatus (Aster)	Hand pull and remove seed from site
	Gnaphthium luteo album (Cudweed)	Hand pull and remove seed from site
	Conzya bonariensis (Fleabane)	Hand pull and remove seed from site
	Verbena bonariensis (Purple Top)	Hand pull and remove seed from site
	Phoenix canariensis (Phoenix Palm)	Dig out and remove from site
	Citrus jambhirii (Bush Lemon)	Cut and paint large tree

12. BUSHCARE SITE SPECIES LIST

OVERSTOREY TREES	
Botanical	Common
<i>Corymbia maculata</i>	Spotted Gum
<i>Eucalyptus botyiodes</i>	Southern Mahogany
<i>Eucalyptus pilularis</i>	Blackbutt
<i>Eucalyptus robusta</i>	Swamp Mahogany
SHRUBS	
Botanical	Common
<i>Acacia floribunda</i>	Sally Wattle
<i>Acacia longifolia spp longifolia</i>	Coastal Wattle
<i>Acacia mearnsii</i>	Black Wattle
<i>Acacia suaveolens</i>	Sweet Scented Wattle
<i>Acacia ulicifolia</i>	Prickly Moses
<i>Acmena smithii</i>	Lilly Pilly
<i>Allocasuarina littoralis</i>	Forest She Oak
<i>Avecinia marina</i>	Grey Mangrove
<i>Banksia integrifolia</i>	Coastal Banksia

<i>Banksia serrata</i>	Old Man Banksia
<i>Breynia oblongifolia</i>	Breynia
<i>Bursaria spinosa</i>	Black Thorn
<i>Casuarina glauca</i>	Swamp She Oak
<i>Clerodendrum tomentosum</i>	Hairy Clerodendrum
<i>Exocarpus cupressiformis</i>	Cherry Ballart
<i>Hibbertia saligna</i>	Tall Guinea Flower
<i>Leptospermum polygalifolium</i>	Lemon Scented Tea Tree
<i>Leucopogon juniperinus</i>	Coastal Beard - Heath
<i>Livistona australis</i>	Cabbage Tree Palm
<i>Melaleuca ericifolia</i>	Swamp Paperbark
<i>Monotoca eliptica</i>	Tree Broom Heath
<i>Notelea longifolia</i>	Mock Olive
<i>Pittosporum spinescens</i>	Orange Boxthorn
<i>Pittosporum undulatum</i>	Sweet Pittosporum
<i>Platyscaea lanceolata</i>	Carrot Tops
UNDERSTOREY (grasses, herbs, orchids)	
Botanical	Common
<i>Baumea juncea</i>	N/A
<i>Caladenia picta</i>	Painted Fingers
<i>Commelina cyanea</i>	Scurvy Weed
<i>Dianella caerulea</i>	Flax Lily
<i>Dicondra repens</i>	Kidney Weed
<i>Econopogon caespitosus</i>	Echidna Grass
<i>Entelasia stricta</i>	Right Angle Grass
<i>Eragrostis brownii</i>	Browns Lovegrass
<i>Gahnia sieberana</i>	Saw Sedge
<i>Geranium solanderi</i>	Creeping Geranium
<i>Gonocarpus teucrioides</i>	Raspwort
<i>Helechrysum elatum</i>	Everlasting Daisy
<i>Hypolepis muelleri</i>	Harsh Ground Fern
<i>Imperata cylindrica</i>	Blady Grass
<i>Isolepis nodosa</i>	Swamp Rush
<i>Juncus kraussii</i>	Native Rush
<i>Lomandra longifolia</i>	Spiny Matt Rush
<i>Microlaena stipoides</i>	Weeping Grass
<i>Opercularia aspera</i>	Stink Weed
<i>Oplismenus imbecillis</i>	Basket Grass
<i>Plectranthus parviflorus</i>	Native Cockspur
<i>Poa affinis</i>	N/A
<i>Pteridium esculentum</i>	Bracken Fern
<i>Pterostylis obtusa</i>	Blue Tongue Greenhood
<i>Samolus repens</i>	Creeping Brookweed
<i>Sarcornia quinqueflora</i>	Glasswort
<i>Schelhamera undulata</i>	Lilac Lily
<i>Senecio linearifolius</i>	Fireweed Groundsel
<i>Sporobolus virginicus</i>	Sand Couch
<i>Tetragonia tetraganoides</i>	Warrigal Spinach
<i>Zoysia macrantha</i>	Water Couch

UNDERSTOREY (vines & climbers)	
Botanical	Common
<i>Billardaria scandens</i>	Apple Dumplings
<i>Clematis aristata</i>	Old Mans Beard
<i>Glycine clandestinum</i>	Slender Love Creeper
<i>Hardenbergia violaceae</i>	False Sarsaparilla
<i>Hibbertia scandens</i>	Guinea Flower
<i>Kennedia prostrata</i>	Dusky Coral Pea
<i>Kennedia rubicunda</i>	Running Postman
<i>Parsonsia straminea</i>	Silk Pod Vine
<i>Stephania japonica</i>	Snake Vine

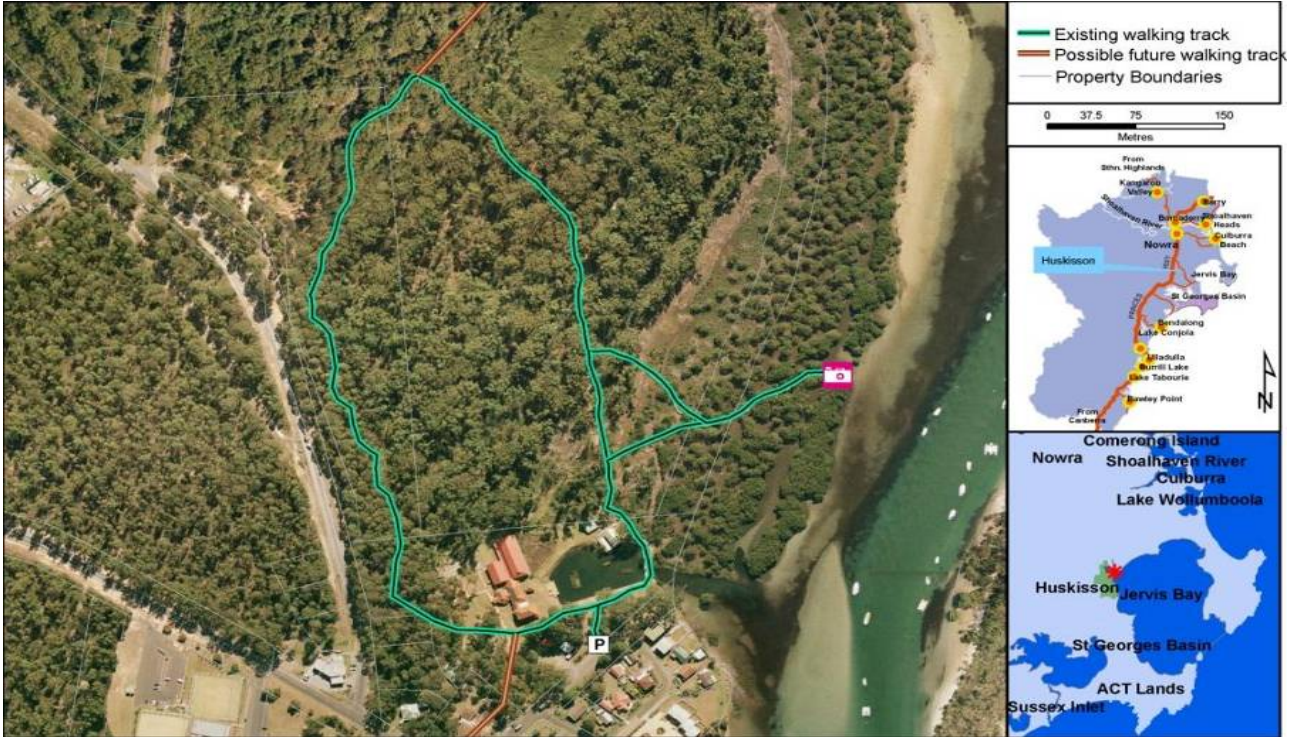
Bushcare Group Name:

Coordinator Name:

Signature:

Date: / /

Appendix 1 – Wirracoo Walking Track location (Shoalhaven Walking Track Strategy)



DRAFT



DEPOT BEACH BUSHCARE ACTION PLAN

Document Number: D12/123515 • **Adopted:** • **Minute Number:** • **File:** 26281E •
Produced By: Planning & Development Services • **Review Date:**

CONTACT INFORMATION

Group Name:	Depot Beach Bushcare Group
Contact:	Leonie Kestel
Reserve Name:	Depot Beach
Land Tenure:	NPWS & SCC Road Reserve

1. BUSHCARE GROUP GOALS

The goals of the Bushcare Group plan are:

1. To restore the endemic vegetation types and local biodiversity of the forest of Depot Beach
2. To bring the number of weeds mentioned in the following pages down to a more manageable level to ensure on-going maintenance activities can be effective and maintained.
3. Promote a sense of caring and ownership of the surrounding bushland.
4. Raise the awareness of residents in the village of the negative impact on the local biodiversity of invasive plants, especially common ornamental garden plants that can be invasive in local bushland.

GROUP ACTION	PRIORITY	METHOD	TIME
		e) Hand Pull Mother of Millions seedlings and more mature plants, being careful not to disturb any intact plantlets that mature plants may be carrying 2. Plant in niches where weeds have been removed/controlled 3. BG, SCC and NPWS to source funds to prepare an REF for Sweet Daphnae control program	
Zone 2 1. Undertake control of following weed species: a. <i>Polygala myrtifolia</i> (<i>Butterfly Bush</i>) b. <i>Conzya albida</i> (<i>Fleabane</i>) 2. Revegetate areas left bare by weed control.	M	Use the following weed control methods: 1a. Remove Butterfly Bush seedlings by hand. Cut and paint mature plants with undiluted glyphosate 1b. Hand pull Fleabane and bag to remove off site 2. Plant in niches where weeds have been removed/controlled	2012 - 2015
Zone 3 • Undertake control of the following weed species:	H	Use the following weed control methods:	2012 - 2015

GROUP ACTION	PRIORITY	METHOD	TIME
<ul style="list-style-type: none"> ○ Euphorbia paralias (Sea Spurge) <ul style="list-style-type: none"> a. <i>Conzya albida</i> (Fleabane) 		<ul style="list-style-type: none"> ● Hand-pull Sea Spurge plants and leave on site. Ensure that gloves are worn at all times due to toxic latex sap and avoid eye contact 	
<p>Zone 4</p> <ul style="list-style-type: none"> ● Undertake control of the following weed species: <ul style="list-style-type: none"> ○ <i>Bryophyllum delagoense</i> (Mother of Millions) <ul style="list-style-type: none"> a. <i>Asparagus asparagiodes</i> (Ground Asparagus) ○ <i>Chlorophytum comosum</i> (Spider Plant) 	M	<p>Use the following weed control methods:</p> <ul style="list-style-type: none"> ● Hand Pull Mother of Millions seedlings and more mature plants, being careful not to disturb any intact plantlets that mature plants may be carrying <ul style="list-style-type: none"> a. Dig and remove Ground Asparagus and all trace of plant including rhizomes ● Hand dig out Spider Plant and remove from site 	2012 - 2015
<p>Zone 5</p> <p>Undertake control of the following weed species:</p> <ul style="list-style-type: none"> a. <i>Bryophyllum delagoense</i> (Mother of Millions) b. <i>Senna pendula</i> var. <i>Pendula</i> (Winter senna) c. <i>Aloe</i> spp. 	H	<p>Use the following weed control methods:</p> <ul style="list-style-type: none"> ● Hand Pull Mother of Millions seedlings and more mature plants, being careful not to disturb any intact plantlets that mature plants may be carrying ● Smaller <i>Aloe</i> spp. can be dug 	2012 & on-going

GROUP ACTION	PRIORITY	METHOD	TIME
		out and removed off site <ul style="list-style-type: none"> • Hand pull small Senna and cut and paint larger plants with 1:3 ratio glyphosate and water. 	
Undertake re-vegetation of areas opened up by weed control using species endemic to the Marramarang National Park using species from this plan suggested re-vegetation species list (ensure all current views/vistas are not impacted on from re-vegetation activities).	M	Use species from suggested revegetation list in plan	On-going
Partner with NSW National Parks & Wildlife Service, Murramarang Progress Association, Shoalhaven Council and Milton Rural Landcare Nursery to implement a “Invasive garden weed replacement” program by which local residents can swap known invasive garden plants with non-invasive plants as an alternative.	M	The Garden swap program undertake following steps: <ul style="list-style-type: none"> • Apply for grant funding to assist with program • Distribute flyer advertising the “replacement program” along “Grow Me Instead” booklet • Distribute plants to residents as required • Bushcare Group to offer advise locally 	2014 -15

3. DEPOT BEACH BUSHCARE GROUP ACTION PLAN MAP



4. BUSHCARE GROUP WHS & EQUIPMENT REQUIREMENTS

Type of Activity	Yes	SWMS name included
Manual weed control (cut & paint, scrape and paint etc)	√	SWMSNR040 Weed Control Activities
Chemical control (spraying of herbicides)	√	SWMSNR040 Weed Control Activities
Planting	√	SWMSNR030 Planting, Propagation and Seed Collection
Propagation & seed collection		
Education (school groups, field days etc)		
Other		

5. COUNCIL SUPPORT

- a. Technical advice and support
- b. Provision of PPE equipment
- c. Supply tools, herbicide and materials within the constraints of budget
- d. Administration support
- e. Assistance with grant application, administration and management.
- f. Graphic design and printing assistance
- g. Assistance with facilitation and negotiation with third parties

6. HAS A SITE HAZARD AND RISK ASSESSMENT BEEN COMPLETED FOR THE BUSHCARE SITE?

Yes

7. LIST THE PERSONAL PROTECTION EQUIPMENT REQUIRED FOR VOLUNTEERS WHILST WORKING ON THE SITE

PPE Equipment Required	Date issued
First Aid Kit	2012
Gloves	2012
Sunscreen	2012
Insect repellent	2012

8. POSSIBLE FUTURE FUNDING

Project	Funding source
Assistance with weed control	Shoalhaven City Council and Office of Environment and Heritage
<i>Pittosporum undulatum</i> REF	SRCMA/SCC

9. PLEASE LIST OTHER LOCAL OR REGIONAL MANAGEMENT PLANS OR STRATEGIES THAT THIS PLAN RELATES TO

Name of document	Year it was produced	Produced by
Shoalhaven Foreshore Reserve Policy	2004	Shoalhaven City Council
Murramarang NP, Brush Island, Belowla Island and Tollgate Islands Nature Reserves – Plan of Management	2002	NSW National Parks and Wildlife Service

10. RECOMMENDED PLANTING/REVEGETATION SPECIES LIST

OVERSTOREY TREES	
Botanical	Common
<i>Banksia integrifolia subsp. integrifolia</i>	Coastal Banksia
<i>Casuarina glauca</i>	Swamp Oak
<i>Corymbia maculata</i>	Spotted Gum
<i>Eucalyptus botryoides</i>	Bangalay
SHRUBS	
Botanical	Common
<i>Acacia floribunda</i>	White Sally
<i>Acacia longifolia</i>	Sydney Golden Wattle
<i>Correa alba</i>	White Correa
<i>Crinum pedunculatum</i>	Swamp Lily
<i>Dodonaea triquetra</i>	Large leaf Hop
<i>Ficus coronata</i>	Creek Sandpaper Fig
<i>Lomandra longifolia</i>	Spiny Matt-Rush
<i>Melaleuca hypericifolia</i>	Hillock bush
<i>Persoonia linearis</i>	Narrow leaved Geebung
<i>Pittosporum revolutum</i>	Rough Fruit Pittosporum
<i>Pultenaea daphnoides</i>	Bush Pea
<i>Westringia fruticosa</i>	Native Rosemary
UNDERSTOREY (grasses, herbs, climbers)	
Botanical	Common
<i>Acacia terminalis</i>	Sunshine Wattle
<i>Atriplex cinerea</i>	Grey Saltbush
<i>Carpobrotus glaucescens</i>	Native Pigface
<i>Commelina cyanea</i>	Scurvy Weed
<i>Dianella Species</i>	Blue Flax-lily
<i>Dianella spp.</i>	Native Flax
<i>Doodia aspera</i>	Prickly Rasp Fern
<i>Gompholobium latifolium</i>	Golden Glory Pea
<i>Goodenia ovata Hop Goodenia</i>	Goodenia ovata Hop Goodenia
<i>Hardenbergia violacea</i>	Native Sarsaparilla
<i>Hardenbergia violacea</i>	False Sarsaparilla
<i>Hibbertia aspera</i>	Twining Guinea Flower
<i>Hibbertia diffusa</i>	Prostrate Guinea Flower
<i>Hibbertia diffusa</i>	Prostrate Guinea Flower
<i>Hibbertia scandens</i>	Snake Vine
<i>Hibbertia scandens</i>	Climbing Guinea Flower
<i>Kennedia rubicunda</i>	Running Postman
<i>Lomandra filiformis subsp. filiformis</i>	
<i>Macrozamia communis</i>	Burrawang
<i>Pandorea pandorana</i>	Wonga Wonga Vine
<i>Poa labillardieri</i>	Poa Tussock
<i>Prostanthera violacea</i>	

<i>Scaevola aemula</i>	Purple Fan Flower
<i>Scaevola ramosissima</i>	Purple Fan Flower

11. SITE WEED LIST (See attached Bush Regenerators Information Sheets for further details)

Noxious	Environmental	Control Method
	Agapanthus Sp (Agapanthus)	Cut seed heads off and bag and dig out crown of the plants
	Agave Sp (Agave)	Dig out plants crown and remove from site
	Asparagus aethiopicus (Asparagus Fern)	Crown out individual plants and remove crowns from site
	Bidens pilosa (Cobblers Pegs)	Remove seed head and spot spray with a non-selective herbicide
	Bryophyllum delagoense (Mother of Millions)	Carefully hand remove all plant matter from site larger infestations can be sprayed with a selective herbicide.
	Chlorophytum comosum (Spider Plant)	Crown out plants and remove from site or spot spray larger infestations
	Erythrina X sykesii (Coral Tree)	Cut and paint smaller plants or drill and inject with 100% glyphosate
	Gomphocarpus fruticosus (Narrow Leaf Cotton Bush)	Hand pull or spot spray
	Hedychium gardnerianum (Ginger Lily)	Dig out underground growing parts and remove from site
	Ipomea carica (Coastal morning glory)	Scrape and paint and remove larger biomass from site
	Lonicera japonica (Japanese Honeysuckle)	Scrape and paint smaller infestations or spot spray larger infestations with a non selective herbicide such as glyphosate
	Nephrolepis cordifolia (Fishbone Fern)	Dig out underground growing parts and remove from site or spot spray with a selective herbicide
	Polygala myrtifolia (Myrtle Leaf Milkwort)	Cut and paint larger plants and remove from site, smaller plants can be hand removed
	Senna pendula spp. pendula (Cassia)	Cut and paint larger plants or hand pull smaller plants
	Sollya heterophylla (Bluebell Creeper)	Spot spray with a non selective herbicide
	Vinka major (Perriwinkle)	Spot spray with a selective herbicide
	Watsonia bulbifera (Watsonia)	Cut off ripe seed bulbils and bag and remove from site, spot spray plants or hand

		pull smaller one ensure all off underground corms are removed as they easily dislodge and can remain in soil profile
--	--	--

12. BUSHCARE SITE SPECIES LIST

OVERSTOREY TREES	
Botanical	Common
<i>Acacia mabelliae</i>	Mabel's Wattle
<i>Corymbia maculata</i>	Spotted Gum
<i>Eucalyptus botryoides</i>	Southern Mahogany
<i>Eucalyptus sieberi</i>	Silver Top Ash
SHRUBS	
Botanical	Common
<i>Acacia longifolia</i> spp. <i>longifolia</i>	Sydney Golden Wattle
<i>Acmena smithii</i>	Lilly Pilly
<i>Allcoasuarina paludosa</i>	She Oak
<i>Banksia integrifolia</i>	Coastal Banksia
<i>Breynia oblongifolia</i>	Breynia
<i>Cassine australis</i>	Red Fruited Olive Plum
<i>Cassinia aculeata</i>	Dog Wood
<i>Eleocarpus reticulatus</i>	Blueberry Ash
<i>Eupomatia laurina</i>	Bolwarra
<i>Ficus coronata</i>	Sandpaper Fig
<i>Hibbertia aspera</i>	Guinea Flower
<i>Leptospermum polygalifolium</i>	Lemon Scented Tea Tree
<i>Leucopogon juniperinus</i>	Prickly Beard-Heath
<i>Melaleuca armillaris</i>	Bracelet Honey-Myrtle
<i>Melaleuca hypericifolia</i>	Hillock Bush
<i>Myoporum insulare</i>	Coastal Boobialla
<i>Notolea longifolia</i>	Mock Olive
<i>Pittosporum revolutum</i>	Rough Fruited Pittosporum
<i>Pittosporum undulatum</i>	Sweet Pittosporum
<i>Synoum glandulosum</i>	Bastard Rosewood
<i>Westringia fruticosa</i>	Coastal Rosemary
UNDERSTOREY (grasses, herbs, orchids)	
Botanical	Common
<i>Acaena novae zelandiae</i>	Biddy Biddy
<i>Carex appressa</i>	Tall Sedge
<i>Centella asiatica</i>	Centella
<i>Dicondra repens</i>	Kidney Weed
<i>Gahnia sp</i>	Sword Grass
<i>Imperata cylindrica</i>	Blady Grass
<i>Isolepis nodosa</i>	Knobbly Rush
<i>Lepidosperma laterale</i>	Lepidosperma
<i>Lomandra longifolia</i>	Spiny Matt Rush
<i>Microlaena stipoides</i>	Weeping Grass
<i>Rubus parvifolius</i>	Native Raspberry

<i>Sigesbeckia orientallis</i>	Indian Weed
UNDERSTOREY (vines & climbers)	
Botanical	Common
<i>Cissus antarctica</i>	Kangaroo Grape
<i>Cissus Hypoglauca</i>	Water Vine
<i>Clematis aristata</i>	Old Mans Beard
<i>Eustrephis latifolius</i>	Wombat Berry
<i>Hibbertia scandens</i>	Guinea Flower
<i>Kennedia rubicunda</i>	Running Postman
<i>Tylophora barbata</i>	Tylophora

Bushcare Group Name:

Coordinator Name:

Signature:

Date: /..... /.....