



## FARRANT AVENUE BUSHCARE ACTION PLAN

**Document Number:** D12/112773 • **Adopted:** • **Minute Number:** • **File:** 26279E •  
**Produced By:** Planning & Development Services • **Review Date:**

### CONTACT INFORMATION

<b>Group Name:</b>	Farrant Avenue Bushcare Group
<b>Reserve Name:</b>	East Crescent & Culburra Beach Surf Club
<b>Reserve Number:</b>	CCU388
<b>Land Tenure:</b>	Crown Land TM/CC

### 1. BUSHCARE GROUP GOALS

**Aim:**

Improve the biodiversity of the dune vegetation at Warrain Beach at Culburra by undertaking a community bush regeneration project focusing on the dunes surrounding the Culburra Beach Surf Life Saving Club

**Objectives:**

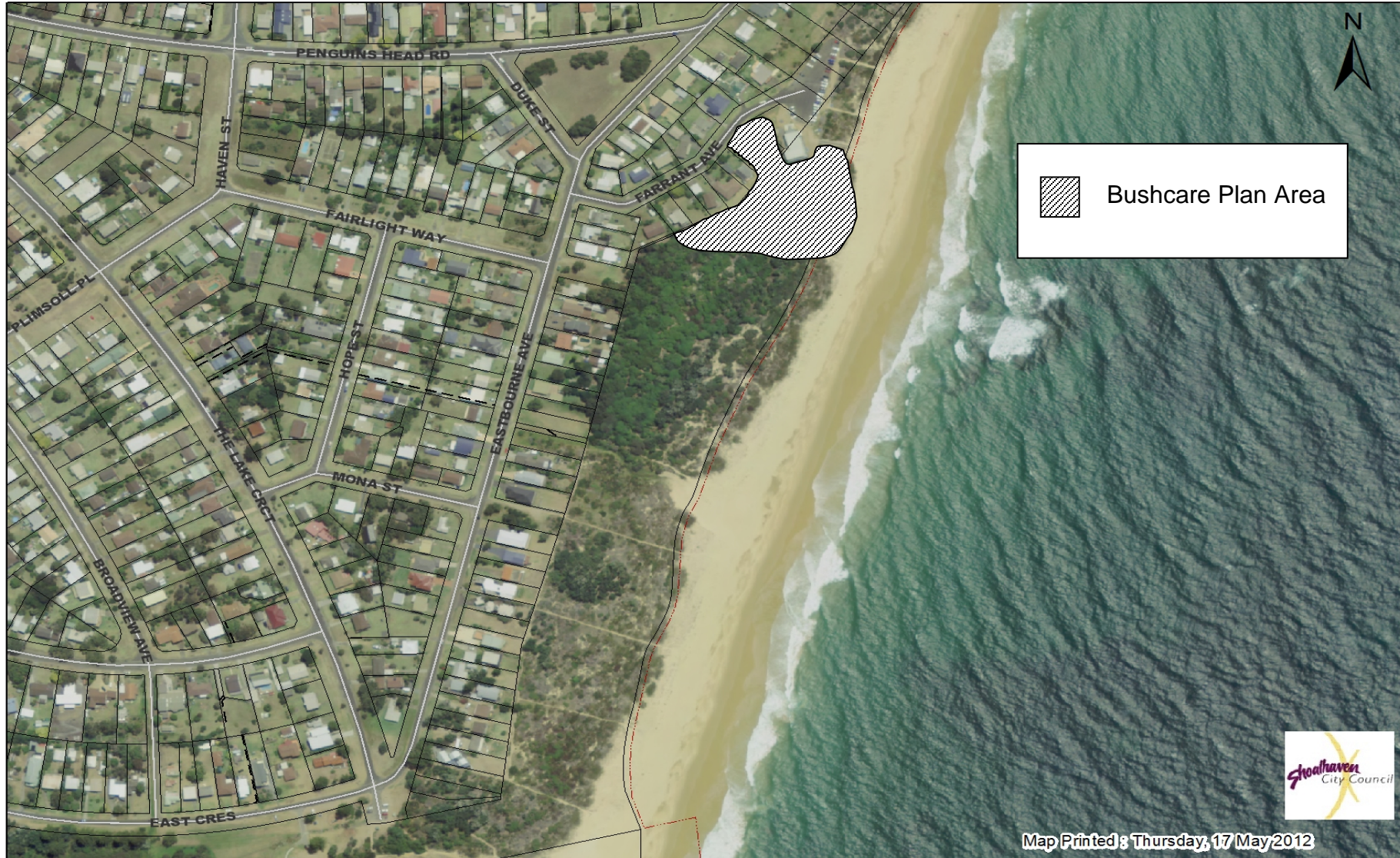
1. Staged control and removal of noxious and environmental weeds on the dunes to promote regeneration of the remnant vegetation.
2. Rehabilitate the dune vegetation on the western side of the surf club following the renovations.
3. Raise community awareness of the importance of protecting the remnant dune vegetation.

**2. SHOALHAVEN BUSHCARE GROUP ACTIVITIES TABLE (to be in conjunction with attached site map)**  
**NOTE: Priority should be rated as H = High (within 12 months); M = Medium (1-3 years); L = Low**

GROUP ACTION	PRIORITY	METHOD	TIME
<p>Areas 1 to 7</p> <ol style="list-style-type: none"> <li>1. Maintain revegetation site previously cleared and planted in 2003. Storm damage to older mature <i>Banksia intergrifolia</i> and some re-mergence of Lantana where the initial <i>Acacia spp.</i> have died, also some encroaching of <i>Pittosporum undulatum</i> in new open areas. Propose to progressively hand weed, with Council permission, where possible and control grass edge.</li> <li>2. Existing walking track, hand weeding predominantly Bitou Bush, Asparagus Fern and removal <i>Pittosporum undulatum</i> seedlings.</li> <li>3. Existing pruned area, continue hand weeding predominantly Bitou Bush and continue planting bare areas with low growing dune species such as Pigface and Lomandra.</li> <li>4. Secondary revegetation area, contain the grass edge, hand weed and continue to extend local species into adjacent garden.</li> <li>5. Residential grass edge, progressively cutback and define edge with fallen and driftwood timber to define mowing edge, revegetate adjacent banks with low growing native coastal species.</li> <li>6. Surf Club Extension Area (see attachments 1 &amp; 2) – The dune immediately west of the club is in very poor condition and requires landscaping and rehabilitation. This project needs to be jointly undertaken by Council, the Bushcare</li> </ol>	<ol style="list-style-type: none"> <li>1. H</li> <li>2. M</li> <li>3. L</li> <li>4. M</li> <li>5. M</li> <li>6. H</li> </ol>	<ol style="list-style-type: none"> <li>1. Cut and paint and hand pulling</li> <li>2. Hand removal</li> <li>3. Hand removal</li> <li>4. Spot spray grass edges with 1:100 glyphosate</li> <li>5. Spot spray grass edges with 1:100 glyphosate</li> </ol>	<p>On going</p>

GROUP ACTION	PRIORITY	METHOD	TIME
<p>Group and Surf Club as follows:</p> <ul style="list-style-type: none"> <li>a. Clarify boundaries of sub-division of Lots 21 &amp; 22 DP206466 in order to ascertain the extent of rehabilitation and revegetation works in relation to Surf Club and boundary of Lot 21</li> <li>b. Hold site meeting with Council, Bushcare Group and Surf Club to agree on a plan and contributions</li> <li>c. Prepare Landscape plan for site rehabilitation</li> <li>d. Seek funding to carry out plan</li> <li>e. Bushcare Group and surf club to maintain area</li> </ul> <p>7. Dune woodland beyond Bushcare zone, storm damage to some older mature <i>Banksia intergrifolia</i> due to borer from previous lopping, increasing <i>Pittosporum undulatum</i> seedlings in this area.</p>	<p>7. L</p>	<p>7. Replacement planting as required and hand pulling of seedlings</p>	

3. FARRANT AVE BUSHCARE GROUP ACTION PLAN MAP 1 – SITE AFFECTED BY PLAN



**FARRANT AVE BUSHCARE GROUP SITE MAP 2 – ZONE 1 DETAILS**



DRAFT

**4. BUSHCARE GROUP WHS EQUIPMENT REQUIREMENTS**

Type of Activity	Yes	SWMS name included
Manual weed control (cut and paint, scrape and paint etc)	√	SWMSNR040 Weed Control Activities
Chemical control (spraying of herbicides)	√	SWMSNR040 Weed Control Activities
Planting	√	SMSNR030 Planting Propagation & Seed
Minor construction (walking track, fencing, outdoor furniture)		
Propagation and seed collection		
Education (school groups, field days etc)		
Other		

**5. COUNCIL SUPPORT**

- a. Technical advice and support
- b. Provision of PPE equipment
- c. Supply tools, herbicide, plants, guards, stakes, water crystals and materials within the constraints of budget
- d. Administration support
- e. Assistance with grant application, administration and management.
- f. Supply of water cart for watering plants
- g. Graphic design and printing assistance
- h. Assistance with facilitation and negotiation with

**6. HAS A SITE HAZARD AND RISK ASSESSMENT BEEN COMPLETED FOR THE BUSHCARE SITE?**

Yes

**7. LIST THE PERSONAL PROTECTION EQUIPMENT REQUIRED FOR VOLUNTEERS WHILST WORKING ON THE SITE**

<b>PPE Equipment Required</b>	<b>Date issued</b>
First Aid Kit	Not as yet
Gloves	Not as yet
Sunscreen	Not as yet
Insect repellent	Not as yet

**8. POSSIBLE FUTURE FUNDING**

<b>Project</b>	<b>Funding source</b>
Regeneration of Warrain Beach Littoral Rainforest pockets	SRCMA or Community Action Grants

**9. PLEASE LIST OTHER LOCAL OR REGIONAL MANAGEMENT PLANS OR STRATEGIES THAT THIS PLAN RELATES TO**

<b>Name of document</b>	<b>Year it was produced</b>	<b>Produced by</b>
Shoalhaven Natural Areas – Generic Community Land Plan of Management	2001	Shoalhaven City Council
Shoalhaven Foreshore Reserves Policy	2004	Shoalhaven City Council
Shoalhaven Coastal Zone – Plan of Management	2012	Shoalhaven City Council

**10. RECOMMENDED PLANTING/REVEGETATION SPECIES LIST**

<b>OVERSTOREY TREES (To be planted only in areas where vegetation vandalism has occurred)</b>	
<b>Botanical</b>	<b>Common</b>
<i>Acmena smithii</i>	Lillypilly
<i>Banksia integrifolia</i>	Coastal Banksia
<i>Eucalyptus botrioides</i>	Bangalay
<b>SHRUBS</b>	
<b>Botanical</b>	<b>Common</b>
<i>Correa alba</i>	White Correa
<i>Leptospermum levegatum</i>	Coastal Tea tree
<i>Myoporum insulare</i>	Coastal Boobialla
<b>UNDERSTOREY (grasses, herbs, climbers)</b>	
<b>Botanical</b>	<b>Common</b>
<i>Carpobrotus glaucescens</i>	Pig Face
<i>Commelina cyanea</i>	Commelina
<i>Dianella caurelea</i>	Blue Flax Lily
<i>Hibbertia scandens</i>	Guinea Flower
<i>Isolepis nodosa</i>	Club Rush
<i>Lomandra longifolia</i>	Spiny Mat Rush
<i>Microlaena stipoides</i>	Weeping Grass
<i>Plectranthus parviflorus</i>	Cockspur
<i>Rhagodia candolleana</i>	Salt Bush
<i>Themeda australis</i>	Kangaroo Grass

**11. SITE WEED LIST (See attached bush regenerators information sheets for more details)**

<b>Noxious</b>	<b>Environmental</b>	<b>Control Method</b>
Lantana camara (Lantana)		Cut and paint larger plants or hand pull smaller plants or spray with a non-selective herbicide
Chrysanthemoides monulifera subsp rotunda (Bitou Bush)		Cut and paint larger plants or hand pull smaller plants or spray with a non-selective herbicide
Senecio madagascariensis (Fireweed)		Hand pull small isolated plants and remove from site or spot spray larger infestations with a selective herbicide during winter
	Asparagus aethiopicus (Asparagus Fern)	Dig out underground growing parts (rhizome) and remove from site. Larger infestations can be sprayed with a selective herbicide
	Senna pendula (Cassia)	Cut and paint larger plants or hand pull smaller plants



	Ochna serrata (Mickey Mouse Bush)	Cut and paint larger plants or hand pull smaller plants
	Bryophyllum pinnatum (Resurrection Plant)	Spray larger infestations with a selective herbicide. Smaller infestations can be hand pulled insuring that all plant material is removed from site
	Hydrocotyle bonariensis(Kurnell Curse)	Can be sprayed with a selective herbicide
	Acacia saligna (Western Australian Wattle)	Larger trees should be drilled and injected and left in situ. Younger plants should be cut and painted
	Hedychium gardeneranium (Ginger Lily)	Dig out all rhizomes and remove from site
	Verbena bonariensis (Purple Top)	Hand pull plants
	Conyza bonariensis (Fleabane)	Hand pull plants
	Nasturtium tropaeolum (Nasturtium)	Spray larger infestations with a non-selective herbicide. Smaller infestations can be hand pulled
	Lagunaria pattersonia (Norfolk Island Hibiscus)	Larger trees should be drilled and injected and left in situ. Younger plants should be cut and painted
	Erharta erecta (Erharta)	Spray with a non-selective herbicide ensuring that follow up spraying is undertaken
	Stenotaphrum secundatum (Buffallo Grass)	Spray with 1% dilution rate of a non-selective herbicide such as glyphosate during winter
	Sporobolis africanis (Parramatta Grass)	Individual plants can be hand pulled. Larger infestation should be sprayed with a non-selective herbicide at recommended rates
	Paspalum dilatatum (Paspalum)	Spray with a non-selective herbicide ensuring that follow up spraying is undertaken
	Cynodon dactylon (Couch)	Spray larger infestations with a non-selective herbicide. Smaller infestations can be hand pulled
	Crassula multicava (Shade Crassula)	Smaller infestations can be dug out and removed. Larger ones should be sprayed with a non-selective herbicide plus wetting agent

**12. BUSHCARE SITE SPECIES LIST**

<b>OVERSTOREY TREES</b>	
<b>Botanical</b>	<b>Common</b>
<i>Acacia obtusifolia</i>	Wattle
<i>Acmena smithii</i>	Lillypilly
<i>Banksia integrifolia</i>	Coastal Banksia
<i>Casuarina glauca</i>	Swamp She Oak
<i>Eucalyptus botrioides</i>	Bangalay
<i>Pittosporum undulatum</i>	Sweet Pittosporum
<b>SHRUBS</b>	
<b>Botanical</b>	<b>Common</b>
<i>Correa alba</i>	White Correa
<i>Leptospermum levegatum</i>	Coastal Tea tree
<i>Leucopogon parvifloris</i>	Pigeon Berry Ash
<i>Monotoca eliptica</i>	Broom Heath
<i>Myoporum insulare</i>	Coastal Boobiella
<b>UNDERSTOREY (grasses, herbs, climbers)</b>	
<b>Botanical</b>	<b>Common</b>
<i>Carpobrotus glaucescens</i>	Pig Face
<i>Commelina cyanea</i>	Commelina
<i>Dianella caurelea</i>	Blue Flax Lily
<i>Imperata cylindrica</i>	Blady Grass
<i>Isolepis nodosa</i>	Club Rush
<i>Lomandra longifolia</i>	Spiny Mat Rush
<i>Microlaena stipoides</i>	Weeping Grass
<i>Plectranthus parviflorus</i>	Cockspur
<i>Rhagodia candolleana</i>	Salt Bush
<i>Rubus parviflorus</i>	Native Raspberry
<i>Sonchus megalocarpus</i>	Beach Sow Thistle
<i>Themeda australis</i>	Kangaroo Grass
<i>Typha orientalis</i>	Bullrush
<b>UNDERSTOREY (vines &amp; climbers)</b>	
<b>Botanical</b>	<b>Common</b>
<i>Glycine clandestina</i>	Slender Love Creeper
<i>Hibbertia scandens</i>	Guinea Flower

**Bushcare Group Name:**.....

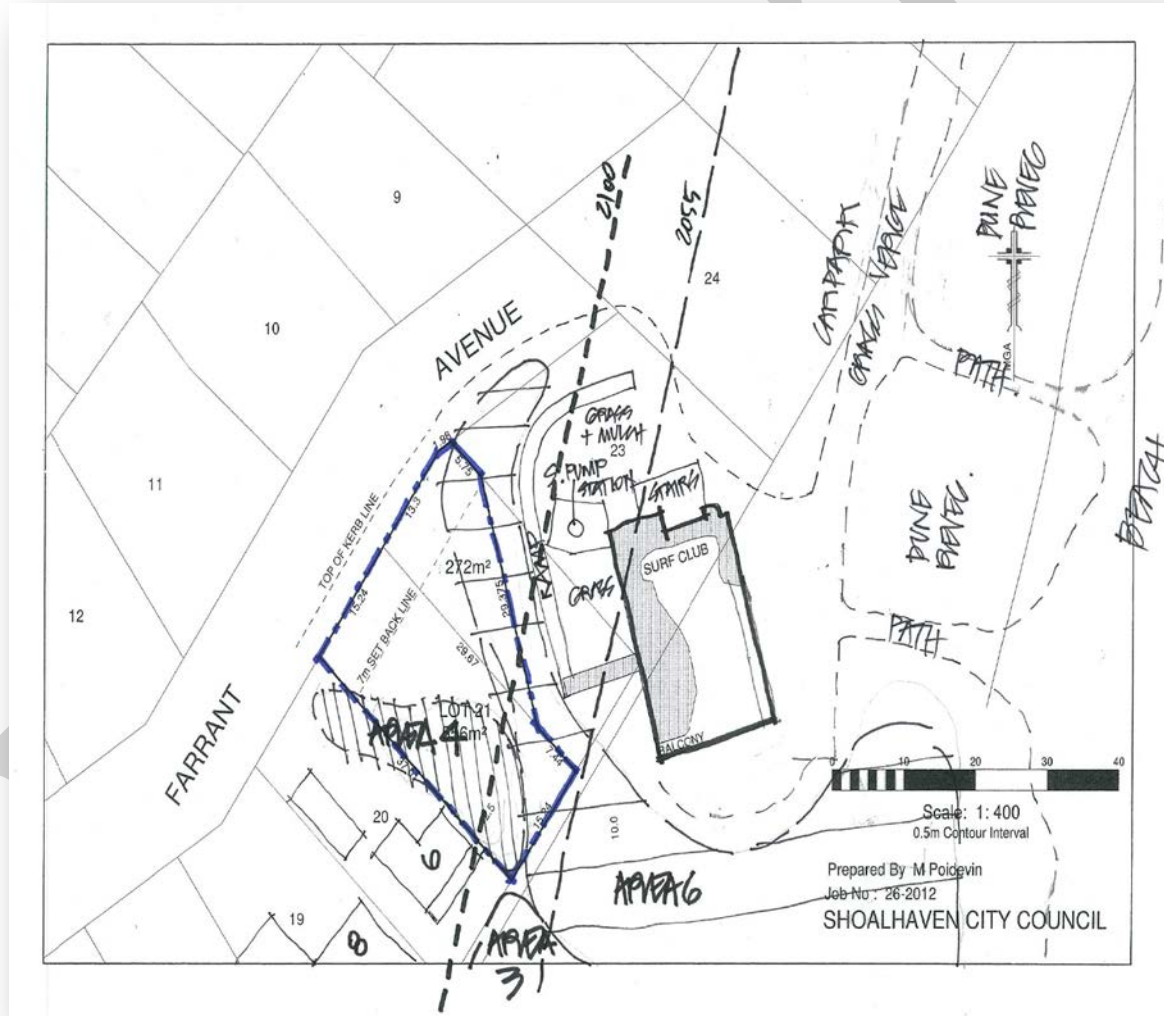
**Coordinator Name:** .....

**Signature:** .....

**Date:** ...../...../.....

DRAFT

Attachment 1: Details of Lot 21 & Culburra Surf Life Saving Club Area



Attachment 2: Photo of dune area to the west of Culburra Surf Life Saving Club identified for rehabilitation



DRAFT



## ILLOWRA WETLAND & RAINFOREST (BOLONG RD) BUSHCARE ACTION PLAN

**Document Number:** D12/127790 • **Adopted:** • **Minute Number:** • **File:** 26279E •  
**Produced By:** Planning & Development Services • **Review Date:**

### CONTACT INFORMATION

<b>Group Name:</b>	Illowra Wetland & Rainforest (Bolong Rd) Bushcare Group		
<b>Contact:</b>	Darryl Roth		
<b>Reserve Name:</b>	Illowra Wetland		
<b>Reserve Number:</b>	NBO116		
<b>Land Tenure:</b>	SCC	<b>Comm. Land Type:</b>	Natural Area -Bushland

### 1. BUSHCARE GROUP GOALS

<p>Aim:</p> <p>To maintain and restore the biodiversity of the Illowra Wetlands, including maintaining the previous revegetation site surrounding the wetlands.</p> <p>Objectives:</p> <ol style="list-style-type: none"><li>1. Undertake noxious and environmental weed control as per the Property Vegetation Plan (PVP).</li><li>2. Maintain the existing revegetation sites.</li><li>3. No removal of dead or fallen timber as per the PVP.</li></ol>
---

**2. SHOALHAVEN BUSHCARE GROUP ACTIVITIES TABLE (See PVP attached map for details)**  
**NOTE: Priority should be rated as H = High (within 12 months); M = Medium (1-3 years); L = Low**

<b>GROUP ACTION (these should relate to your project description)</b>	<b>PRIORITY</b>	<b>METHOD</b>	<b>TIME</b>
<p>Zone 4n Wetland and Revegetation Area</p> <p>1. Assist Council with the follow control and monitoring of the following weed species:</p> <ul style="list-style-type: none"> <li>i. Acer nugundo (Maple)</li> <li>ii. Lonicera japonica (Japanese Honeysuckle)</li> <li>iii. Tradescantia fluminensis (Trad)</li> <li>iv. Rubus fruticosus (Blackberry)</li> </ul> <p>2. Mowing under existing revegetation areas to maintain walking trails.</p>	H	Hand removal, cut and paint and spot spraying with registered herbicide	On going
<p>Zones 4a, 4i, 4e and 4j Eastern and Northern sections</p> <p>1. Assist Council with follow up control of noxious and environmental weeds of the following weed species:</p> <ul style="list-style-type: none"> <li>i) Ochna serrata (Mickey Mouse Plant)</li> <li>ii) Nephrolpsis cordifolia (Fishbone Fern)</li> <li>iii) Tradescantia fluminensis (Trad)</li> <li>iv) Ligustrum sinense (Small Leaf Privet)</li> <li>v) Ligustrum lucidum (Large Leaf Privet)</li> <li>vi) Senna pendula (Cassialpomea indica (Morning Glory)</li> <li>vii) Pennisetum clandestinum (Kiuyu)</li> </ul>	H	Hand removal, cut and paint and spot spraying with registered herbicide	On going



<b>GROUP ACTION (these should relate to your project description)</b>	<b>PRIORITY</b>	<b>METHOD</b>	<b>TIME</b>
viii) Crassula sp ix) Lantana camara (Lantana) x) Cinnamomum camphora (Camphor Laurel)  2. Assist Council with revegetation following weed control using species from this plan suggested revegetation list.			

DRAFT

### 3. ILLOWRA WETLAND & RAINFOREST (BOLONG RD) BUSHCARE GROUP ACTION PLAN MAP



**4. BUSHCARE GROUP WHS & EQUIPMENT REQUIREMENTS**

Type of Activity	Yes	SWMS name included
Manual weed control (cut & paint, scrape and paint etc)	√	SWMSNR040 Weed Control Activities
Chemical control (spraying of herbicides)	√	SWMSNR040 Weed Control Activities
Planting	√	SWMSNR030 Planting, Propagation and Seed Collection
Minor construction (walking track, fencing, outdoor furniture)		
Propagation & seed collection		
Education (school groups, field days etc)		
Other		

**5. COUNCIL SUPPORT** Technical advice and support

- b. Tools and first Aid kit
- c. Materials/Plants (within limit of budget)
- d. Training support
- e. Assistance with weed control and planting
- f. Provision of a Bushcare signage on site

**6. HAS A SITE HAZARD AND RISK ASSESSMENT BEEN COMPLETED FOR THE BUSHCARE SITE?**

Yes

**7. LIST THE PERSONAL PROTECTION EQUIPMENT REQUIRED FOR VOLUNTEERS WHILST WORKING ON THE SITE**

PPE Equipment Required	Date issued
First Aid Kit	To be issued
Gloves	To be issued
Sunscreen	To be issued
Insect repellent	To be issued

**8. POSSIBLE FUTURE FUNDING**

<b>Project</b>	<b>Funding source</b>
Assistance with regeneration works	Community Action Grants

**9. PLEASE LIST OTHER LOCAL OR REGIONAL MANAGEMENT PLANS OR STRATEGIES THAT THIS PLAN RELATES TO**

<b>Name of document</b>	<b>Year it was produced</b>	<b>Produced by</b>
Generic Community Land – Plan of Management – Natural Areas	2001	Shoalhaven City Council
Property Vegetation Plan – Bernie Regan Sporting Complex	2009	Southern Rivers Catchment Management Authority
Catchment Action Plan	2005	Southern Rivers Catchment Management Authority

**10. RECOMMENDED PLANTING/REVEGETATION SPECIES LIST**

<b>OVERSTOREY TREES</b>	
<b>Botanical</b>	<b>Common</b>
<i>Acacia binervata</i>	Two Veined Hickory
<i>Acmena smithii</i>	Lilly Pilli
<i>Alphitonia excelsa</i>	Red Ash
<i>Cryptocarya gluacescens</i>	Jackwood
<i>Eucalyptus saligna</i>	Sydney Blue Gum
<i>Ficus rubiginosa</i>	Port Jackson Fig
<i>Glochidion ferdinandi</i>	Cheese Tree
<i>Livistonea australis</i>	Bangalow palm
<i>Melaleuca styphelioides</i>	Prickly Paperbark
<i>Syncarpia glomulifera</i>	Turpentine
<i>Toona ciliata</i>	Red Cedar
<b>SHRUBS</b>	
<b>Botanical</b>	<b>Common</b>
<i>Acacia binervata</i> *	Two Veined Hickory Wattle
<i>Callicoma serratifolia</i> *	Callicoma
<i>Cassine australis</i>	Orange Fruited Olive Plum
<i>Ceratopetalum apetalum</i> *	Coachwood
<i>Clerodendrum tomentosum</i>	Hairy Clerodendrum
<i>Eupomatia laurina</i> *	Bollwarra
<i>Ficus coronata</i>	Sand Paper Fig
<i>Glochidion ferdinandi</i>	Cheese Tree
<i>Melaleuca armillaris</i> *	Paperbark
<i>Persoonia linearis</i>	Geebung
<i>Pittosporum revolutum</i>	Rough Fruited Pittosporum
<i>Podocarpus elatus</i> *	Plum Pine
<i>Polyscias elegans</i> *	Celerywood
<i>Psychotria loniceroides</i> *	Hairy Psychotria
<i>Stenocarpus sinuatus</i> *	Firewheel Tree
<i>Syzigium oleosum</i> *	Blue Lillypilly
<i>Trema aspera</i>	Native Peach
<i>Tristaniopsis laurina</i> *	Water Gum
<b>UNDERSTOREY (grasses, herbs, climbers)</b>	
<b>Botanical</b>	<b>Common</b>
<i>Dianella caerulea</i>	Flax Lily
<i>Kennedia rubicunda</i>	Running Post Man
<i>Lomandra longifolia</i>	Matt Rush
<i>Microlaena stipoides</i>	Weeping Grass

**11. SITE WEED LIST (See attached bush regeneration information sheets for details)**

<b>Noxious</b>	<b>Environmental</b>	<b>Control Method</b>
Lantana camara (Lantana)		Cut and paint larger plants or hand pull smaller plants
Ligustrum lucidum (Broad Leaf Privet)		Cut and paint larger plants or hand pull smaller plants
Ligustrum sinense (Small Leaf Privet)		Cut and paint larger plants or hand pull smaller plants
Rubus fruticosus (Blackberry)		Paint and scrape isolated canes or treat with a selective herbicide for larger infestations
Senecio madagascariensis (Fireweed)		Hand pull small isolated plants and remove from site or spot spray larger infestations with a selective herbicide during winter
	Acetosa saggitata (Turkey Rhubarb)	Spot spray infestations with a non-selective herbicide and remove and bag any ripe seed
	Agapanthus africanus (Agapanthus)	Cut and remove seed heads and hand remove plants
	Anredera cordifolia (Madiera Vine)	Smaller infestations can be dug out by hand and all plant material removed site (including aerial tubers). Larger infestations can be treated by spraying with a selective herbicide but must ensure that follow control is done
	Araujia hortorum (Moth Vine)	Hand pull plants and leave on site. Bag any fruit and remove
	Asparagus aethiopicus (Asparagus Fern)	Dig out underground growing parts (rhizome) and remove from site. Larger infestations can be sprayed with a selective herbicide
	Bidens pilosa (Cobblers Pegs)	Remove seed heads and hand pull isolated plants or spot spray larger infestations with a non selective herbicide
	Cinnamomum camphora (Camphor Laurel)	Cut and paint larger plants or hand pull smaller plants
	Erharta erecta (Erharta grass)	Spot spray infestations with a non-selective herbicide
	Imomea indica (Morning Glory)	Scrape and paint stems and remove all plant biomass from site
	Leonotis leonurus (Lions Tail)	Cut and paint larger plants or hand pull smaller plants
	Lonicera japonica (Japanese)	Spot spray infestations with a non-selective herbicide and remove

	Honeysuckle)	and bag any ripe seed
	Ochna serrulata (Mickey Mouse Plant)	Cut and paint all plants except very small ones
	Onopordum acanthium (Scotch Thistle)	Spot spray infestations with a non-selective herbicide
	Pennisetum clandestinum (Kikuyu)	Spot spray infestations with a non-selective herbicide
	Phytolacca octandra (Ink Weed)	Hand pull plants and remove from site
	Ricinus communis (Castor Oil Plant)	Hand pull small isolated plants and remove from site or spot spray larger infestations with a non selective herbicide
	Senna pendula (Winter Senna)	Cut and paint larger plants or hand pull smaller plants
	Solanum mauritanium (Wild Tobacco)	Cut and paint larger plants or hand pull smaller plants
	Solanum nigrum (Blackberry Nightshade)	Remove seed heads and hand pull isolated plants or spot spray larger infestations with a non selective herbicide
	Thunbergia alata (Black Eyed Susan Vine)	Spot spray infestations with a non-selective herbicide
	Tradescantia fluminescens (Wandering Jew)	Roll and rake smaller infestations and remove all plants material, larger infestations can be treated using a selective herbicide or solarisation by covering with black plastic
	Vinca Major (Blue periwinkle)	Spot spray infestations with a non-selective herbicide + wetting agent

## 12. BUSHCARE SITE SPECIES LIST

<b>OVERSTOREY TREES</b>	
<b>Botanical</b>	<b>Common</b>
<i>Acacia paramattensis</i>	Black Wattle
<i>Acmena smithii</i>	Lilly Pilly
<i>Corymbia maculata</i>	Spotted Gum
<i>Eucalyptus Pilularis</i>	Blackbutt
<i>Eucalyptus robusta</i>	Swamp Mahogany
<i>Ficus rubiginosa</i>	Port Jackson Fig
<i>Glochidion ferdinandi</i>	Cheese Tree

<i>Livistonea australis</i> *	Bangalow Palm
<i>Melaleuca styphelioides</i> *	Prickly Paperbark
<i>Syncarpia glomulifera</i>	Turpentine
<i>Toona ciliata</i> *	Red Cedar
<b>SHRUBS</b>	
<b>Botanical</b>	<b>Common</b>
<i>Acacia binervata</i> *	Two Veined Hickory Wattle
<i>Acacia longifolia</i> *	Coast Wattle
<i>Banksia integrifolia</i> *	Coastal Banksia
<i>Banksia robur</i> *	Swamp Banksia
<i>Breynia oblongifolia</i>	Breynia
<i>Callicoma serratifolia</i> *	Callicoma
<i>Cassine australis</i>	Orange Fruited Olive Plum
<i>Casuarina glauca</i>	Swamp She Oak
<i>Ceratopetalum apetalum</i> *	Coachwood
<i>Clerodendrum tomentosum</i>	Hairy Clerodendrum
<i>Eupomatia laurina</i> *	Bollwarra
<i>Ficus coronata</i>	Sand Paper Fig
<i>Glochidion ferdinandi</i>	Cheese Tree
<i>Melaleuca armillaris</i> *	Paperbark
<i>Notolea longifolia</i>	Mock Olive
<i>Omalanthus popuifolius</i>	Bleeding Heart
<i>Pennantia cunninghamii</i> *	Brown Beech
<i>Persoonia linearis</i>	Geebung
<i>Pittosporum revolutum</i>	Rough Fruited Pittosporum
<i>Pittosporum undulatum</i>	Sweet Pittosporum
<i>Podocarpus elatus</i> *	Plum Pine
<i>Polyscias elegans</i> *	Celerywood
<i>Psychotria loniceroides</i> *	Hairy Psychotria
<i>Stenocarpus sinuatus</i> *	Firewheel Tree
<i>Syzigium oleosum</i> *	Blue Lillypilly
<i>Trema aspera</i>	Native Peach
<i>Tristaniopsis laurina</i> *	Water Gum
<i>Wilkea huegeliana</i> *	Tetra Beech
<b>UNDERSTOREY (grasses, herbs, orchids)</b>	
<b>Botanical</b>	<b>Common</b>
<i>Dianella caerulea</i>	Flax Lily
<i>Entelasia stricta</i>	Right Angled Grass
<i>Gahnia sp</i>	Saw Sedge
<i>Geranium solanderi</i>	Native Geranium
<i>Lomandra longifolia</i>	Matt Rush
<i>Microlaena stipoides</i>	Weeping Grass
<i>Oplismenus imbecillis</i>	Basket Grass
<i>Persicaria sp</i>	Knotweed
<i>Sedge Sp</i>	
<b>UNDERSTOREY (vines &amp; climbers)</b>	
<b>Botanical</b>	<b>Common</b>
<i>Kennedia rubicunda</i>	Running Post Man



<i>Pandorea pandorana</i>	Sweet Native Jasmine
<i>Parsonsia straminea</i>	Silk Pod

**Bushcare Group Name:** .....

**Coordinator Name:** .....

**Signature:** .....

**Date:** ..... / .....

DRAFT



## LOWER MULGEN CREEK BUSHCARE ACTION PLAN

**Document Number:** D13/200334 • **Adopted:** • **Minute Number:** • **File:** 26279E •  
**Produced By:** Planning & Development Services • **Review Date:**

### CONTACT INFORMATION

<b>Group Name:</b>	Lower Mulgen Creek Bushcare Group
<b>Contact:</b>	Allan and Brenda Sloane
<b>Address:</b>	2 Centennial Court, Bomaderry
<b>Telephone:</b>	4421 5910
<b>Email:</b>	absloane@bigpond.net.a
<b>Reserve Name:</b>	Mulgen Creek
<b>Reserve Number:</b>	NBO113
<b>Land Tenure:</b>	SCC
	<b>Comm. Land Type:</b> Natural Area - Bushland

### 1. BUSHCARE GROUP GOALS.

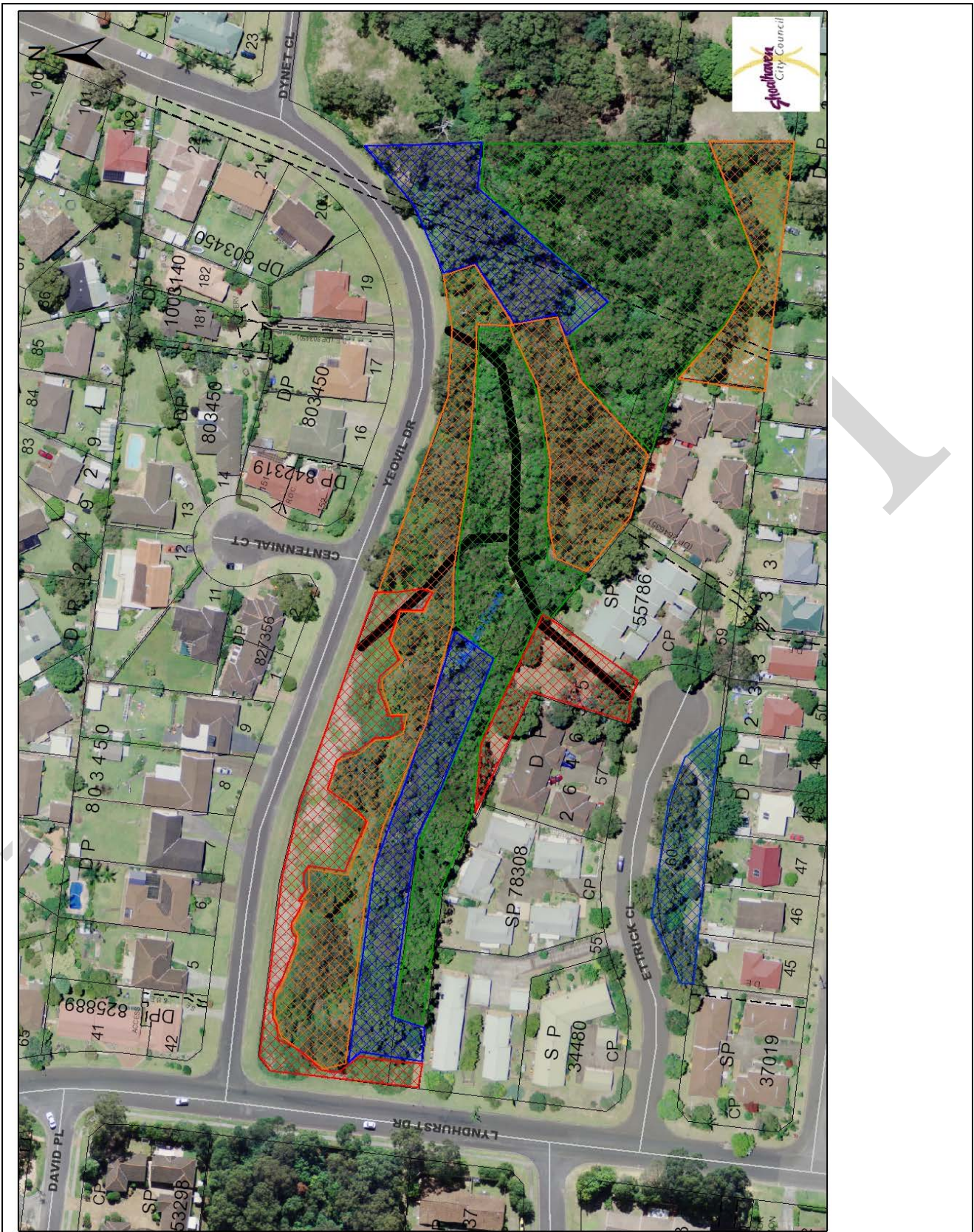
The goal of the Lower Mulgen Creek Bushcare Group is to restore the degraded vegetation along the lower section of Mulgen Creek (downstream of Lyndhurst Ave) to improve the biodiversity of the remnant native vegetation. The group also would like to restore a sense of pride in the local neighbourhood through the work of this project.

**2. SHOALHAVEN BUSHCARE GROUP ACTIVITIES TABLE (to be in conjunction with attached site map)**  
**NOTE: Priority should be rated as H = High (within 12 months); M = Medium (1-3 years); L = Low**

<b>GROUP ACTION (these should relate to your project description)</b>	<b>PRIORITY</b>	<b>METHOD</b>	<b>TIME</b>
Seek funding through Council and other agencies for assistance in undertaking Bushcare activities	H	Identify needs and apply for grants with Council advice and assistance	On – Going
Motivation, awareness of reserve values and work risks, and development of skills for volunteers and neighbours	H	Onsite training in ecology, botany, recording fauna, bush regeneration techniques, digital art & graphic design, construction techniques and risk assessment	2013 and On-going
Design and print a flyer promoting reserve values and Bushcare activities and inviting group membership	H	Work with Council on developing leaflet and distribute to neighbours and community generally	2013
Undertake Lantana control along Northern boundary in red zone, between Yeovil Drive and creek vegetation and undertake buffer planting with pioneer and longer lived species	H	<ul style="list-style-type: none"> <li>• Council and CSO teams to spray and manually control Lantana leaving dead canes on the ground</li> <li>• Bushcare Group to plant buffer areas</li> </ul>	2013 - 14
Mulch out the road reserve and plant out the southern side of road verge with street trees		<ul style="list-style-type: none"> <li>• Council to spray road verge and mulch</li> <li>• Bushcare Group to plant street trees</li> <li>• Bushcare group and Council to maintain</li> </ul>	2013-14 On- going
Commence bush regeneration action in green and blue coded area in Southern, Eastern and Western sections of the reserve according to identified priority sites (see map)	H	<ul style="list-style-type: none"> <li>• Weed control activities to target priority weed species according to impact on biodiversity and according their ability to spread as follows:                             <ul style="list-style-type: none"> <li>○ Lantana</li> <li>○ Small and Large Leaf Privet</li> <li>○ Moth Vine</li> <li>○ Japanese Honeysuckle</li> <li>○ Morning Glory</li> </ul> </li> </ul>	2014 - 16

<b>GROUP ACTION (these should relate to your project description)</b>	<b>PRIORITY</b>	<b>METHOD</b>	<b>TIME</b>
		o Passionfruit	
Undertake follow up maintenance weed control in blue and green coded areas and maintain the buffer plantings on the North – Western boundary of the reserve	H	Watering, mulching, hand weeding and replanting as a long-term undertaking	On-going
Move into the remaining orange coded areas, areas of poor condition, when the weed control and regeneration works in the green and blue zones are stable and only requiring minimal maintenance - Access if any revegetation is required	M	Access progress before moving in next stage	2017 On-going
Move into remaining the red coded areas, very poor condition when all other areas in the reserve have stabilised and only minimal maintenance is required. Need to access revegetation/re-fabrication works as required in these very poor condition bushland areas	L	Access progress before moving into the next stage	2020 On-going
Upgrade walking track system	L	Improve track surface and creek crossing. Mow and maintain section of track through weedy area on Yeovil Drive side	As required
Remove rubbish	H	Hand removal. Council to transport rubbish to tip	On-going

**3. LOWER MULGEN CREEK BUSHCARE GROUP ACTION PLAN MAP – Condition of Bushland Mapping -** (see Tables 1 and 2 for colour code interpretation)



**TABLE 1: Condition of Bushland Colour Code**

COLOUR CODE	CONDITION OF BUSHLAND	DESCRIPTION	INTERVENTION REQUIRED
GREEN	GOOD	Virtually weed free – healthy native community (0-10% weed)	1. Minimal
BLUE	FAIR	Minor infestation of weeds (10-30%weed)	2. Low
ORANGE	POOR	Severely infested – regeneration of native species being suppressed (30-70% weed)	3. Medium
RED	VERY POOR	Bushland replaced by exotic species OR only mature specimens of highest stratum remain – no seedlings or saplings due to infestation by exotics (70-100% weed)	4. Medium or High

**TABLE 2: Degree of Intervention Required**

LEVEL OF INTERVENTION	DESCRIPTION
Minimal (Green) Level 1	Resilience high. Removal of scattered weed & prevention of future impacts may be required
Low (Blue) Level 2	Resilience high to medium. Removal of scattered weed and active management of impacts required
Medium (Orange) Level 3	Resilience impaired but existent. Removal of weeds and removal of impacts required
High (Red) Level 4	Resilience low or seriously limited – may need reconstruction, fabrication or reinstatement to approximate the original ecosystem

**4. BUSHCARE GROUP WHS & EQUIPMENT REQUIREMENTS**

Type of Activity	Yes	SWMS name included
Manual weed control (cut & paint, scrape and paint etc)	√	SWMS1127
Chemical control (spraying of herbicides)	√	SWMS1127
Planting	√	SWMS997
Minor construction (walking track, fencing, outdoor furniture)		
Propagation & seed collection	√	SWMS997
Education (school groups, field days etc)	√	
Other		

**5. COUNCIL SUPPORT**

- Provide plants, mulch, tools, chemicals, spraying equipment, water trailer and other equipment and materials as required and agreed to;
- Supply chemical bottles and pouches for secateurs;
- Assist with design and printing of leaflet;
- Assist with training activities;
- Assist with seeking grants;
- Provide initial risk assessment awareness session

**6. HAS A SITE HAZARD AND RISK ASSESSMENT BEEN COMPLETED FOR THE BUSHCARE SITE?**

Yes            √            No           

**7. LIST THE PERSONAL PROTECTION EQUIPMENT REQUIRED FOR VOLUNTEERS WHILST WORKING ON THE SITE**

PPE Equipment Required	Date issued
First Aid Kit	August 2013
Gloves	August 2013
Sunscreen	August 2013
Insect repellent	August 2013

**8. POSSIBLE FUTURE FUNDING**

Project	Funding source
Assistance with primary weed control from bush regeneration contractors	State or Federal Grants

**9. PLAN WILL BE REVIEWED EVERY THREE YEARS**

Next review due:

...../...../.....

**10. PLEASE LIST OTHER LOCAL OR REGIONAL MANAGEMENT PLANS OR STRATEGIES THAT THIS PLAN RELATES TO**

Name of document	Year it was produced	Produced by
Generic Community Plan of Management – Natural Areas	2001	Shoalhaven City Council
Mulgen Creek Bushcare Group Action Plan	2008	Mulgen Creek Bushcare Group



**11. RECOMMENDED PLANTING/REVEGETATION SPECIES LIST**

<b>OVERSTOREY TREES</b>	
<b>Botanical</b>	<b>Common</b>
<i>Eucalyptus globoidea</i>	White Stringybark
<i>Eucalyptus piperita</i>	Sydney Peppermint
<i>Eucalyptus sclerophylla</i>	Hard-leaved Scribbly Gum
<i>Eucalyptus imitans</i>	Yalwal Stringybark
<i>Eucalyptus obliqua?</i>	Messmate
<i>Corymbia gummifera</i>	Red Bloodwood
<i>Glochidion ferdinandi</i>	Cheese Tree
<i>Acacia elata</i>	Cedar Wattle
<i>Acacia binervata</i>	Two-veined Wattle
<i>Acacia mearnsii</i>	Black Wattle
<i>Melia azedarach</i>	White Cedar
<i>Allocasuarina littoralis</i>	Black She-oak
<i>Pittosporum undulatum</i>	Sweet Pittosporum
<i>Brachychiton acerifolius</i>	Illawarra Flame
<i>Ficus rubiginosa</i>	Port Jackson Fig
<b>SHRUBS</b>	
<b>Botanical</b>	<b>Common</b>
<i>Leptospermum polygalifolium</i>	Yellow Teatree
<i>Ceratopetalum gummifera</i>	Christmas Tree
<i>Pittosporum revolutum</i>	Rough-fruited Pittosporum
<i>Melaleuca linearifolia</i>	Snow in Summer
<i>Breynia oblongifolia</i>	Coffee Bush
<i>Cyathea cooperi</i>	Rough Tree Fern
<i>Daviesia acicularis</i>	Bitter Pea
<i>Dodonaea triquetra</i>	Common Hop Bush
<i>Platylobium formosum</i>	Handsome Flat Pea
<i>Goodenia ovata</i>	Sticky-leaved Goodenia
<i>Pimelia linifolia</i>	Slender Rice Flower
<i>Asplenium australasicum</i>	Birds Nest Fern
<i>Acacia suaveolens</i>	Sweet-scented Wattle
<i>Acacia terminalis</i>	Sunshine Wattle
<i>Lambertia Formosa</i>	Mountain Devil
<i>Persoonia levis</i>	Broad-leaved Geebung
<i>Lomatia silaifolia</i>	Crinkle Bush
<i>Hakea salicifolia</i>	Willow-leaved Hakea
<i>Hibbertia dentata</i>	Twining Guinea Flower
<i>Omalanthus populifolius</i>	Native Poplar
<b>UNDERSTOREY (grasses, herbs, climbers)</b>	
<b>Botanical</b>	<b>Common</b>
<i>Themeda australis</i>	Kangaroo Grass
<i>Lomandra longifolia</i>	Spiny-headed Mat Rush
<i>Lomandra confertifolia</i>	Mat Rush
<i>Dianella caerulea</i>	Blue Flax Lily
<i>Smilax glycyphylla</i>	Native sarsaparilla
<i>Pandorea pandorana</i>	Wonga-Wonga Vine
<i>Ghania siebriana</i>	Sword Sedge

**12. SITE WEED LIST**

Noxious	Environmental	Control Method
Crofton Weed	Broadleaf Dock	
Lantana	Camphor Laurel	
Mist Flower	Coriopsis	
Large-leaved Privet	Couch	
Small-leaved Privet	Fishbone Fern	
	Indian Hawthorn	
	Japanese Honeysuckle	
	Morning Glory	
	Moth Vine	
	Ochna	
	Paddys Lucerne	
	Passionfruit	
	<i>Senna pendula</i> var. <i>glabrata</i> - Cassia	
	Morning Glory	
	Moth Vine	
	Star Jasmine	
	Stinking Roger	
	Tree of Heaven	
	White Veldt Daisy	
	Star Jasmine	

### 13. BUSHCARE SITE SPECIES LIST

OVERSTOREY TREES	
Botanical	Common
<i>Eucalyptus globoidea</i>	White Stringybark
<i>Eucalyptus piperita</i>	Sydney Peppermint
<i>Eucalyptus sclerophylla</i>	Hard-leaved Scribbly Gum
<i>Corymbia gummifera</i>	Red Bloodwood
<i>Glochidion ferdinandi</i>	Cheese Tree
<i>Acacia elata</i>	Cedar Wattle
<i>Acacia binervata</i>	Two-veined Wattle
<i>Acacia mearnsii</i>	Black Wattle
<i>Melia azedarach</i>	White Cedar
<i>Allocasuarina littoralis</i>	Black She-oak
<i>Pittosporum undulatum</i>	Sweet Pittosporum
<i>Brachychiton acerifolius</i>	Illawarra Flame
SHRUBS	
Botanical	Common
<i>Leptospermum polygalifolium</i>	Yellow Teatree
<i>Ceratopetalum gummifera</i>	Christmas Tree
<i>Pittosporum revolutum</i>	Rough-fruited Pittosporum
<i>Melaleuca lineariifolia</i>	Snow in Summer
<i>Breynia oblongifolia</i>	Coffee Bush
<i>Cyathea cooperi</i>	Rough Tree Fern

<i>Daviesia acicularis</i>	Bitter Pea
<i>Dodonaea triquetra</i>	Common Hop Bush
<i>Platylobium formosum</i>	Hansome Flat Pea
<i>Goodenia ovata</i>	Sticky-leaved Goodenia
<i>Macrozamia communis</i>	Burrawang
<i>Pimelia linifolia</i>	Slender Rice Flower
<i>Asplenium australasicum</i>	Birds Nest Fern
<i>Acacia suaveolens</i>	Sweet-scented Wattle
<i>Acacia terminalis</i>	Sunshine Wattle
<i>Lambertia Formosa</i>	Mountain Devil
<i>Persoonia levis</i>	Broad-leaved Geebung
<i>Lomatia silaifolia</i>	Crinkle Bush
<i>Xanthorrhoea resinifera</i>	Grass Tree
<i>Hakea salicifolia</i>	Willow-leaved Hakea
<b>UNDERSTOREY (grasses, herbs, orchids)</b>	
<b>Botanical</b>	<b>Common</b>
<i>Themeda australis</i>	Kangaroo Grass
<i>Imperata cylindrica var. major</i>	Bladey Grass
<i>Lomandra longifolia</i>	Spiny-headed Mat Rush
<i>Lomandra confertifolia</i>	Mat Rush
<i>Dianella caerulea</i>	Blue Flax Lily
<b>UNDERSTOREY (vines &amp; climbers)</b>	
<b>Botanical</b>	<b>Common</b>
<i>Glycine clandestina</i>	Love Vine
<i>Cassytha glabella</i>	Slender Devils Twine
<i>Smilax glycyphylla</i>	Native sarsaparilla
<i>Wahlenbergia gracilis</i>	Native Bluebell
<i>Desmodium variens</i>	

**Bushcare Group Name:** Lower Mulgen Creek Bushcare Group

**Coordinator Name** ALLAN SHOANE

**Signature** Shoane

**Date** 28.1.13