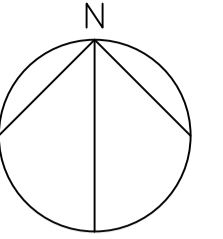


HUSKISSON - VOYAGER PARK ANZAC & HMAS VOYAGER MEMORIAL

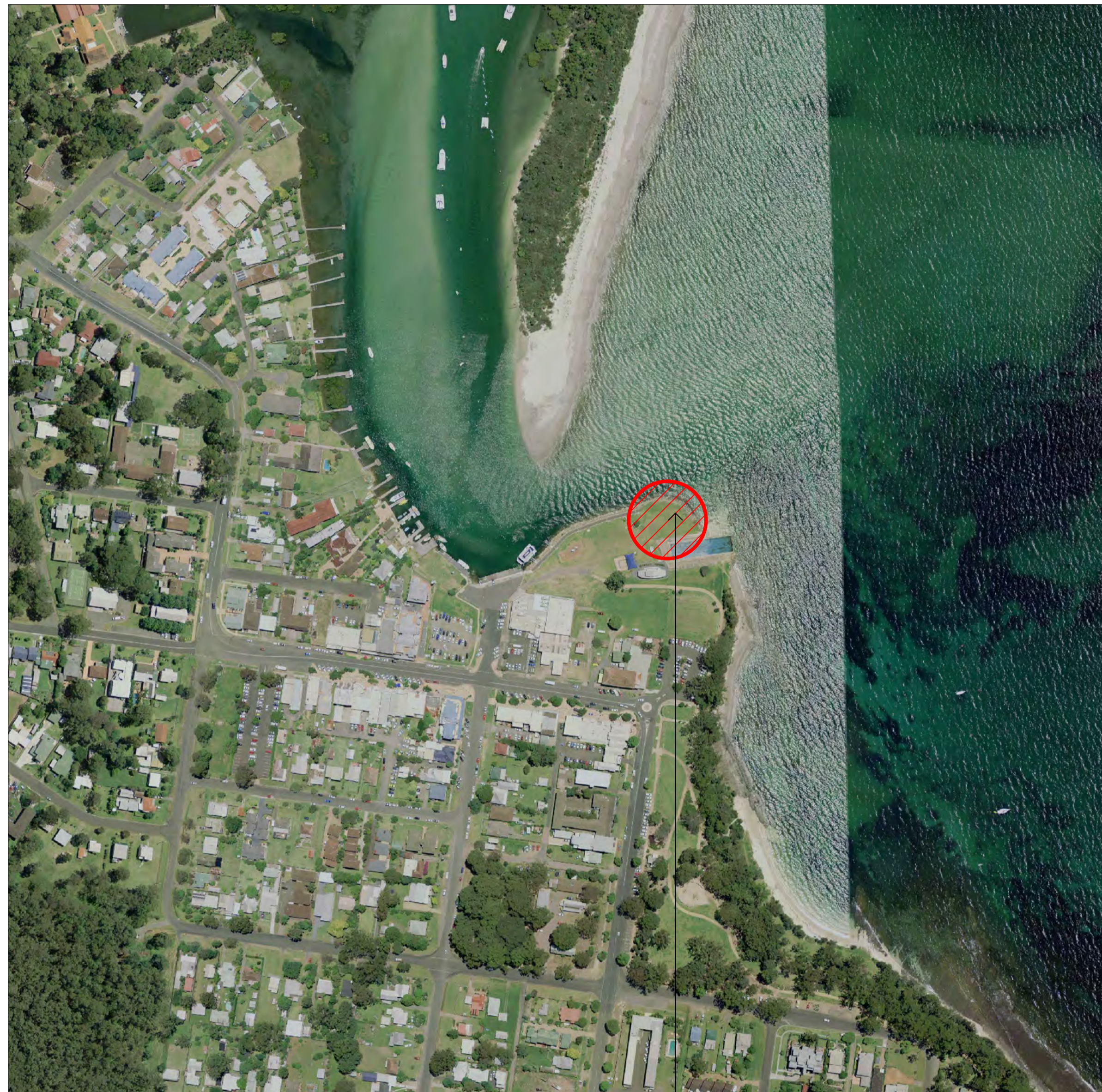
CONSTRUCTION DOCUMENTATION



4523 SHEET NO. DRAWING LIST

SHEET NO.	DRAWING TITLE
70	Title Sheet & Locality Plan
71	Site Plan & Extent of Work
72	Survey Plan
73	Demolition Plan
74	Layout Plan & Finishes Plan
75	NOT USED
76	Elevations / Sections
77	Details - Walls, Seat & Ramp Sections
78	Details - Walls, Stair & Ramp Sections
79	Details - Engraving Remembrance Court Plan
80	Details - Engraving Walls Elevations - Sheet 01
81	Details - Engraving Walls Elevations - Sheet 02
82	Details - Engraving Walls Elevations - Sheet 03
83	Details - Engraving Walls Elevations - Sheet 04
84	Details - Lighting

LOCALITY PLAN



NTS

AREA OF WORKS

ABBREVIATIONS LEGEND

DRAWINGS ARE TO BE READ IN CONJUNCTION WITH SCHEDULE OF FINISHES AND ABBREVIATIONS.

APPROX	APPROXIMATE
ASP*	ASPHALT PATHWAY
B	BOLLARD
BDY	BOUNDARY
BLK*	CONCRETE BLOCK
BOK	BOTTOM OF KERB
BWK	BRICKWORK
CJ	CONTROL JOINT
CL	CENTERLINE
COL	COLUMN
CON*	CONCRETE
CONC	CONCRETE SURFACE
CONC/RW	CONCRETE RETAINING WALL
COS	CHECK ON SITE
DIM	DIMENSION
DR	DRAINAGE PIT
E	ELECTRICAL UNDERGROUND
EL/PIT	ELECTRICAL PIT
EJ	EXPANSION JOINT
ES	EDGE OF SEAL
EQ	EQUAL
EX	EXISTING
F*	FLAGPOLE
FL	FINISHED LEVEL
FLD	FLOOD LIGHT
GAR	GARDEN
GP	GRADED PIT
GRA*	GRAVEL
L	LIGHT POLE
L*	UP LIGHT
L-P*	LIGHT POLE
NOM	NOMINAL
NTS	NOT TO SCALE
PAV	PAVED AREA
PF*	PAINT FINISH
REV	REVTMENT WALL
RL	RELATIVE LEVEL
S	SEAT
S*	SEATING FURNITURE
SAND/WALLS	SANDSTONE RETAINING WALL
SIM	SIMILAR
SMH	SEWER MAN HOLE
SOP	SET OUT POINT
SS	STAINLESS STEEL
ST*	STONE CLADDING
STN	SURVEY CONTROL STATION
TIM/ST	TIMBER WITH STEEL INSERT
TBC	TO BE CONFIRMED
TOB	TOB OF BANK
TOK	TOP OF KERB
TOW	TOP OF WALL
TYP	TYPICAL
UA	UNEQUAL ANGLE
UNO	UNLESS NOTED OTHERWISE

NOTE: * REFERS TO NUMBERS E.G. 1,2 FOLLOWING AN ABBREVIATION DENOTES A PARTICULAR TYPE OF ITEM.
FOR EXPLANATION OF ITEM TYPES, REFER TO SPECIFICATION AND SCHEDULE OF FINISHES / ABBREVIATIONS

DESIGNED BY OTHERS:

STRUCTURAL / CIVIL	
REFER TO SIMON PUNNETT & ASSOCIATES DOCUMENTATION	
880 / C01	Construction Plan
880 / C02	Set-out Plan
880 / C03	Alignment No1 Cross Sections
880 / C04	Sediment & Erosion Control Plan
880 / S01	Structural Construction Notes
880 / S02	Slab & Footing Plan & Sections
880 / S03	Sections

ELECTRICAL

REFER TO 'ELECTRICAL TECHNOLOGY SERVICES' SECTION OF SHOALHAVEN CITY COUNCIL DOCUMENTATION

Drawing List to be provided

TERMS & CONDITIONS FOR SUPPLY OF ELECTRONIC DATA

The data provided may have been prepared by us, or wholly, or in part by third parties on behalf of Project Delivery SCC, and although we use our best endeavours to ensure no inaccuracies or defects exist in the physical media, data or software, we make no representations or warranties of any kind to its merchantability or fitness for a particular purpose.
These drawings do not represent 'as-built' drawings, and therefore Project Delivery SCC do not warrant the integrity of the data or accuracy or quality of any information contained within the data. Therefore, all responsibility relating to the use of such information is entirely that of the user.
If you have altered the data in any way, you will ensure that the Project Delivery SCC title block and registered trademark is removed from the data before re-issue.

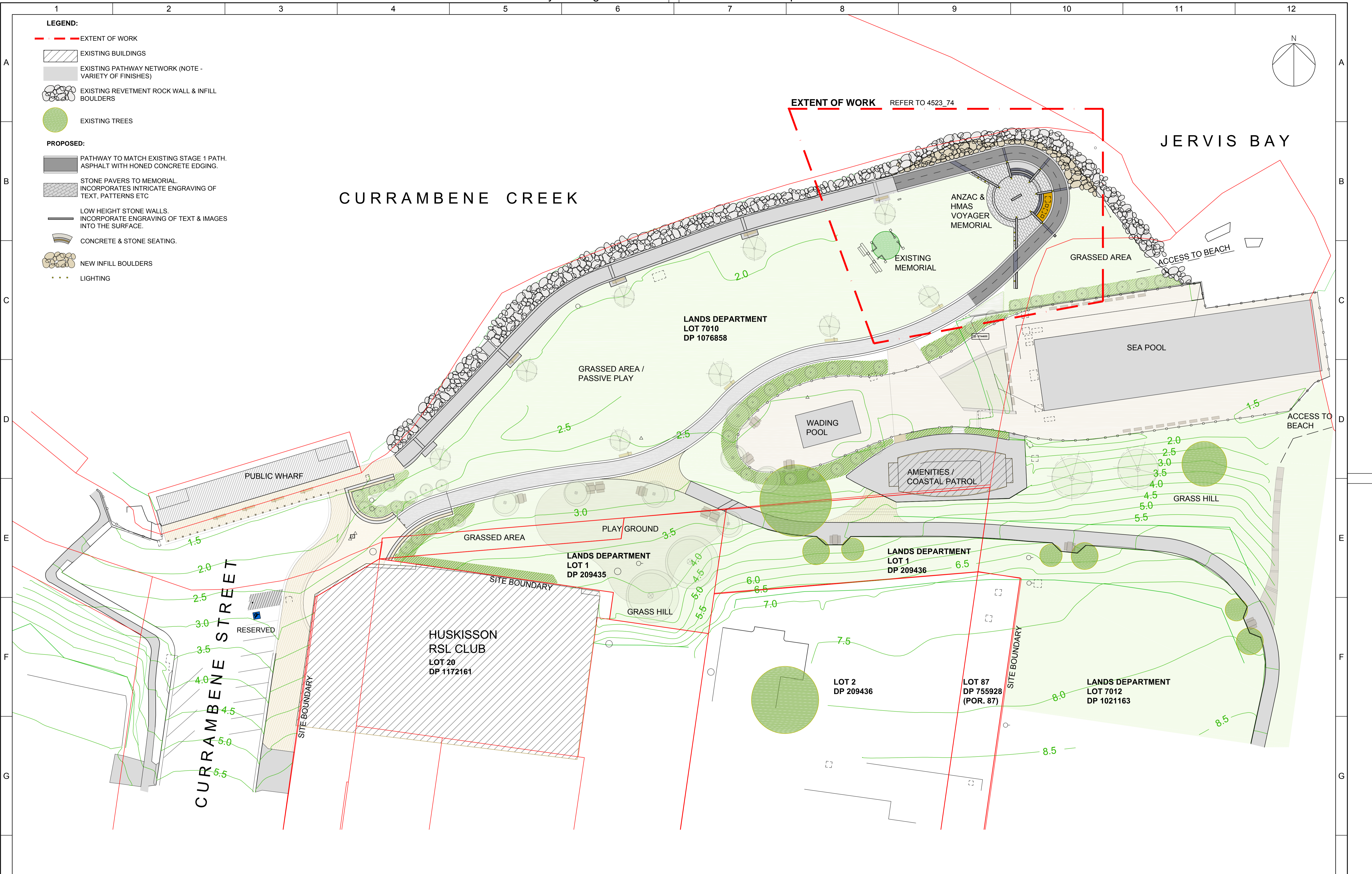
DESIGNED: K. BARRIE	19/06/13	SURVEYED: K. ZAMMIT / E.VENHUIZEN	AMENDMENTS	
DRAWN: K. BARRIE	25/07/13	FIELD BOOK:	01 FOR CLIENT REVIEW	30/08/13
CHECKED: R. HOLMES	28/08/13	ORIGIN OF LEVELS:		
APPROVED: R. HOLMES	28/08/13	DATUM: AHD		
DRAWING FILE: 4523_70.dwg		CIVILCAD FILE:		




CITY OF SHOALHAVEN

Huskisson - Currambene Street
Voyager Park - Anzac & HMAS Voyager Memorial
Title Sheet & Locality Plan

SCALE: NTS Do not scale off drawings. Confirm all dimensions on site prior to start of construction.	DIRECTOR ASSETS & WORKS: _____	DATE: _____
NOTE: This drawing, design and the copyright therein are the property of Shoalhaven City Council. It has been produced by the Assets & Works - Project Delivery Section and must not be used, reproduced or copied wholly or in part without the permission of the Project Delivery Manager.	- PLAN REFERENCE - 4523_70	



DESIGNED: K. BARRIE 19/06/13	SURVEYED: K. ZAMMIT / E.VENHUIZEN 25/07/13	AMENDMENTS 01 FOR CLIENT REVIEW 30/08/13		 <p>CITY OF SHOALHAVEN Huskisson - Currambene Street Voyager Park - Anzac & HMAS Voyager Memorial Master Plan & Extent of Work</p>	SCALE: 1:300 for A1 size plot, 1:600 for A3 size plot Do not scale off drawings. Confirm all dimensions on site prior to start of construction.	DIRECTOR ASSETS & WORKS: _____	DATE: _____
CHECKED: R. HOLMES 28/08/13	ORIGIN OF LEVELS:				NOTE: This drawing, design and the copyright therein are the property of Shoalhaven City Council. It has been produced by the Assets & Works - Project Delivery Section and must not be used, reproduced or copied wholly or in part without the permission of the Project Delivery Manager.	<p align="center">- PLAN REFERENCE - 4523_71</p>	
APPROVED: R. HOLMES 28/08/13	DATUM: AHD						
DRAWING FILE: 4523_70.dwg	CIVILCAD FILE:						

**SITE SURVEY
EXISTING ELEMENTS LEGEND:**

- 2+13 SPOT LEVELS
- ASP ASPHALT PATHWAY
- B BOLLARD
- CONC CONCRETE SURFACE
- CONC/RW CONCRETE RETAINING WALL
- DR DRAINAGE PIT
- E - ELECTRICAL UNDERGROUND
- EL/PIT ELECTRICAL PIT
- ES EDGE OF SEAL
- FENCE
- FLD FLOOD LIGHTS
- L LIGHT POLE
- PAV PAVED AREA
- S SEAT
- SAND/WALL SANDSTONE WALL
- SITE BOUNDARY
- SMH SEWER MAN HOLE
- STN SURVEY CONTROL STATION
- TIM/ST TIMBER & STEEL WITHIN PATHWAY
- TREE
- TOK TOP OF KERB
- TOB TOP OF BANK
- W - WATER (UNDERGROUND)

NOTE:
SPOT LEVELS ARE MEASURED IN METRES.
SERVICES ARE INDICATIVE ONLY. POSITIONS ARE BASED ON SURFACE INDICATORS LOCATED DURING FIELD SURVEY.
CONFIRMATION OF THE EXACT POSITION SHOULD BE MADE TO THE RELEVANT AUTHORITIES PRIOR TO ANY EXCAVATION WORK. OTHER SERVICES MAY EXIST WHICH ARE NOT SHOWN.

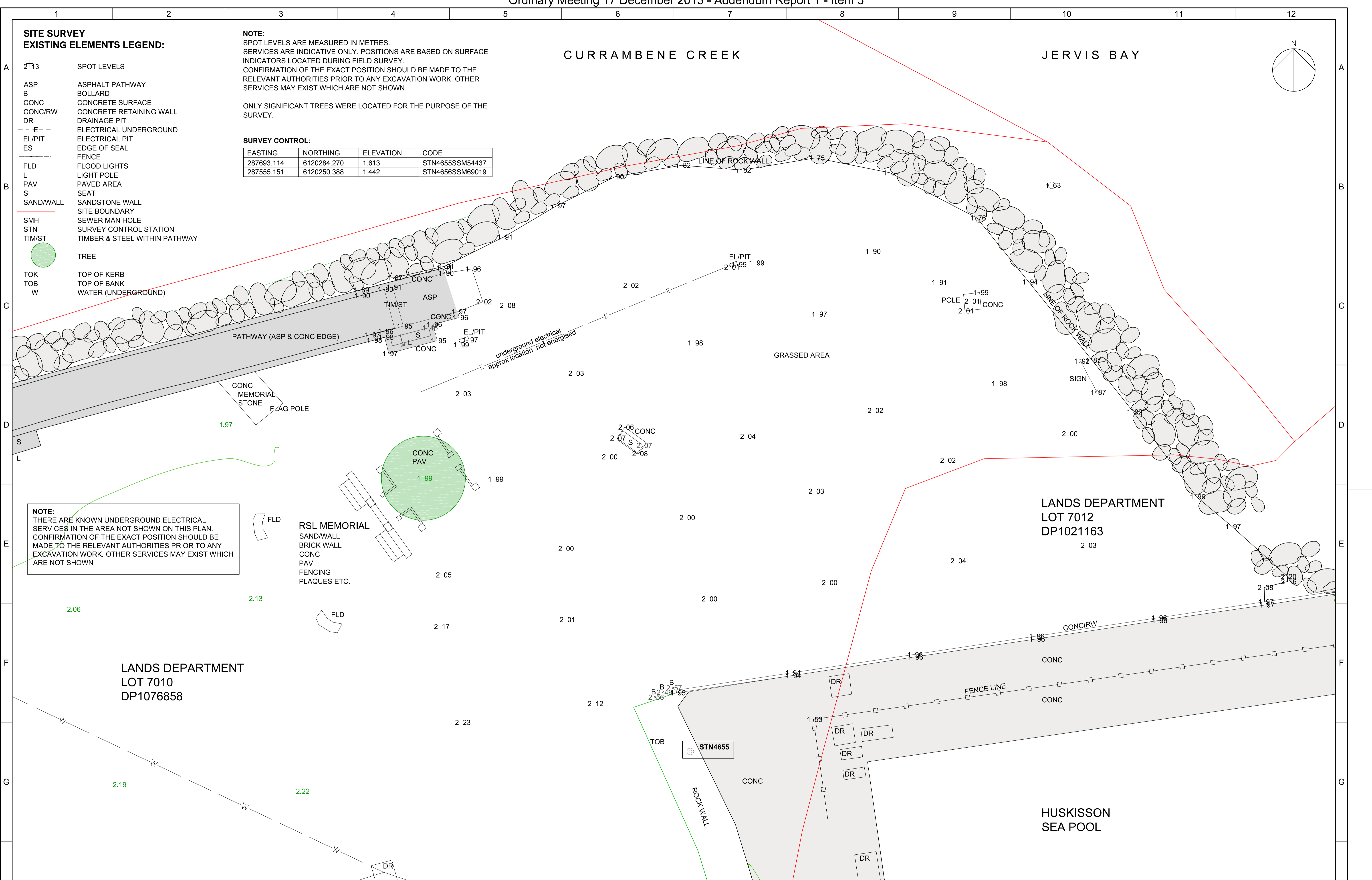
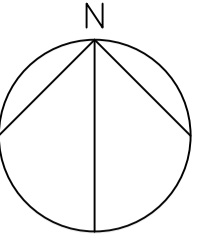
ONLY SIGNIFICANT TREES WERE LOCATED FOR THE PURPOSE OF THE SURVEY.

SURVEY CONTROL:

EASTING	NORTHING	ELEVATION	CODE
287693.114	6120284.270	1.613	STN4655SSM54437
287555.151	6120250.388	1.442	STN4656SSM69019

CURRAMBENE CREEK

JERVIS BAY



NOTE:
THERE ARE KNOWN UNDERGROUND ELECTRICAL SERVICES IN THE AREA NOT SHOWN ON THIS PLAN. CONFIRMATION OF THE EXACT POSITION SHOULD BE MADE TO THE RELEVANT AUTHORITIES PRIOR TO ANY EXCAVATION WORK. OTHER SERVICES MAY EXIST WHICH ARE NOT SHOWN

RSL MEMORIAL
SAND/WALL
BRICK WALL
CONC PAV
FENCING
PLAQUES ETC.

**LANDS DEPARTMENT
LOT 7012
DP1021163**

**LANDS DEPARTMENT
LOT 7010
DP1076858**

**HUSKISSON
SEA POOL**

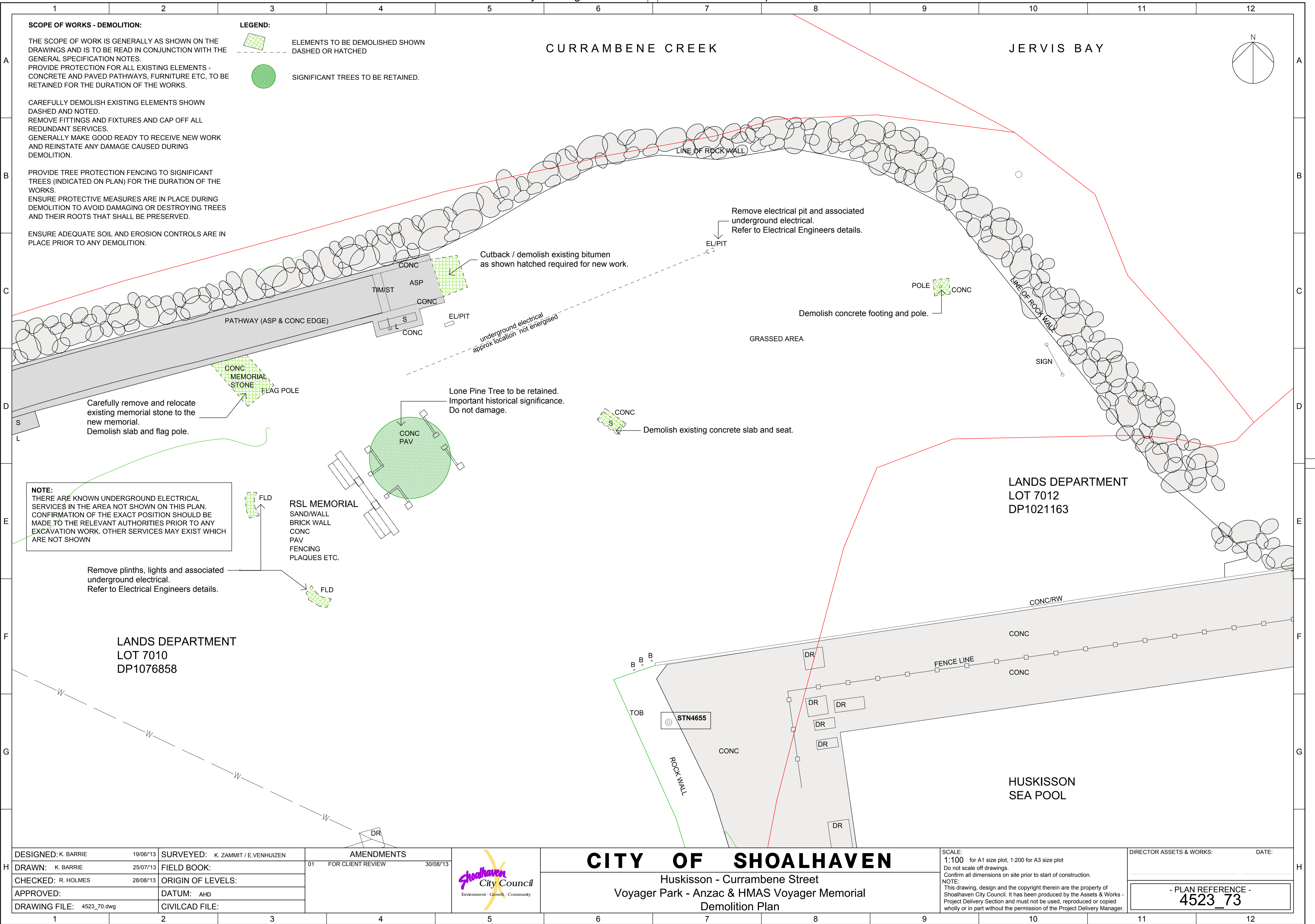
DESIGNED: K. BARRIE	19/06/13	SURVEYED: K. ZAMMIT / E.VENHUIZEN	AMENDMENTS
DRAWN: K. BARRIE	25/07/13	FIELD BOOK:	01 FOR CLIENT REVIEW 30/08/13
CHECKED: R. HOLMES	28/08/13	ORIGIN OF LEVELS:	
APPROVED: R. HOLMES	28/08/13	DATUM: AHD	
DRAWING FILE: 4523_70.dwg		CIVILCAD FILE:	



CITY OF SHOALHAVEN
Huskisson - Currambene Street
Voyager Park - Anzac & HMAS Voyager Memorial
Survey Plan

SCALE:
1:100 for A1 size plot, 1:200 for A3 size plot
Do not scale off drawings.
Confirm all dimensions on site prior to start of construction.
NOTE:
This drawing, design and the copyright therein are the property of Shoalhaven City Council. It has been produced by the Assets & Works - Project Delivery Section and must not be used, reproduced or copied wholly or in part without the permission of the Project Delivery Manager.

DIRECTOR ASSETS & WORKS: DATE:
**- PLAN REFERENCE -
4523_72**



SCOPE OF WORKS - DEMOLITION:

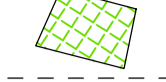
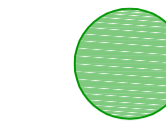
THE SCOPE OF WORK IS GENERALLY AS SHOWN ON THE DRAWINGS AND IS TO BE READ IN CONJUNCTION WITH THE GENERAL SPECIFICATION NOTES.
 PROVIDE PROTECTION FOR ALL EXISTING ELEMENTS - CONCRETE AND PAVED PATHWAYS, FURNITURE ETC., TO BE RETAINED FOR THE DURATION OF THE WORKS.

CAREFULLY DEMOLISH EXISTING ELEMENTS SHOWN DASHED AND NOTED.
 REMOVE FITTINGS AND FIXTURES AND CAP OFF ALL REDUNDANT SERVICES.
 GENERALLY MAKE GOOD READY TO RECEIVE NEW WORK AND REINSTATE ANY DAMAGE CAUSED DURING DEMOLITION.

PROVIDE TREE PROTECTION FENCING TO SIGNIFICANT TREES (INDICATED ON PLAN) FOR THE DURATION OF THE WORKS.
 ENSURE PROTECTIVE MEASURES ARE IN PLACE DURING DEMOLITION TO AVOID DAMAGING OR DESTROYING TREES AND THEIR ROOTS THAT SHALL BE PRESERVED.

ENSURE ADEQUATE SOIL AND EROSION CONTROLS ARE IN PLACE PRIOR TO ANY DEMOLITION.

LEGEND:

-  ELEMENTS TO BE DEMOLISHED SHOWN DASHED OR HATCHED
-  SIGNIFICANT TREES TO BE RETAINED.

NOTE:
 THERE ARE KNOWN UNDERGROUND ELECTRICAL SERVICES IN THE AREA NOT SHOWN ON THIS PLAN. CONFIRMATION OF THE EXACT POSITION SHOULD BE MADE TO THE RELEVANT AUTHORITIES PRIOR TO ANY EXCAVATION WORK. OTHER SERVICES MAY EXIST WHICH ARE NOT SHOWN

LANDS DEPARTMENT
 LOT 7010
 DP1076858

LANDS DEPARTMENT
 LOT 7012
 DP1021163

HUSKISSON
 SEA POOL

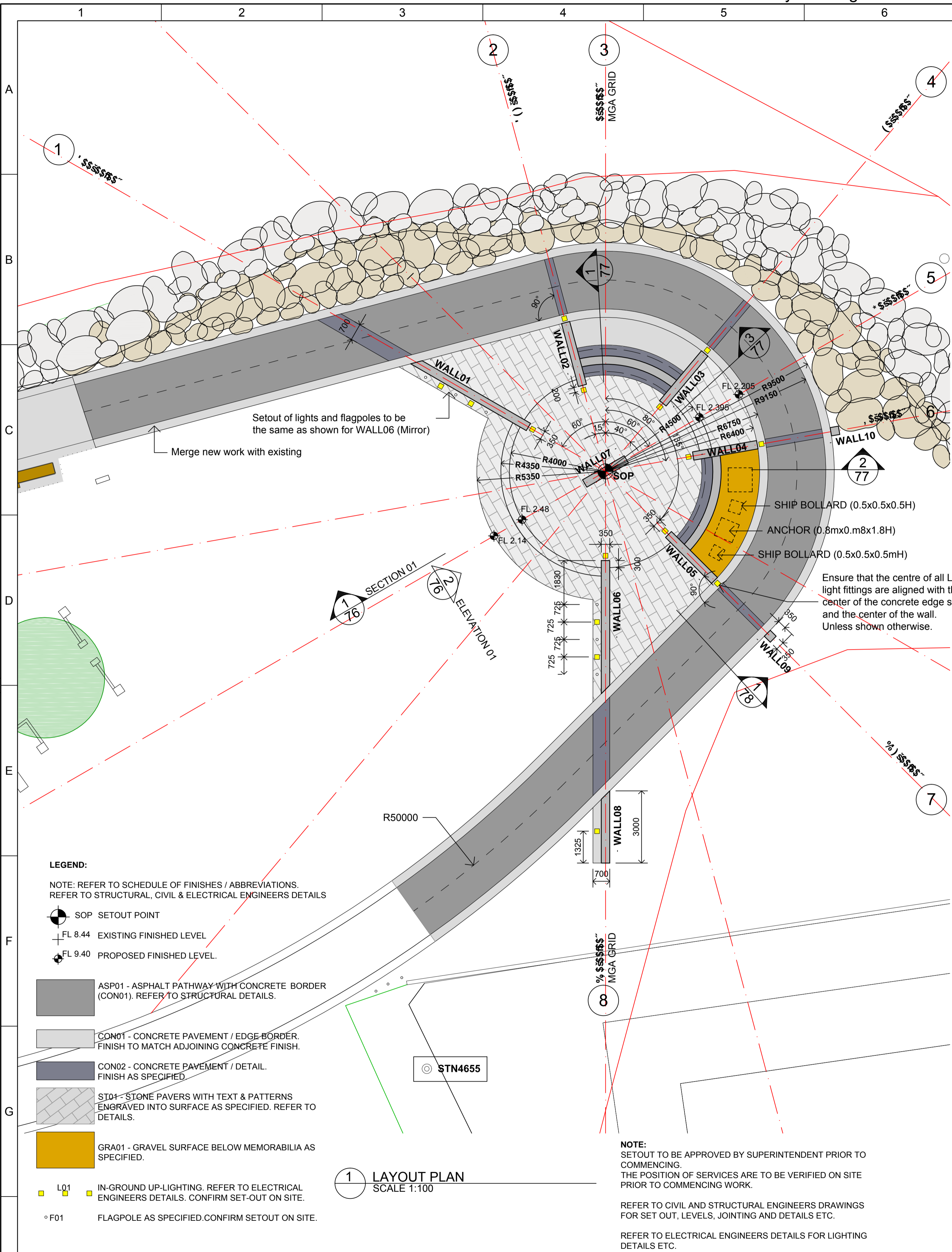
DESIGNED: K. BARRIE	19/06/13	SURVEYED: K. ZAMMIT / E.VENHUIZEN	AMENDMENTS	
DRAWN: K. BARRIE	25/07/13	FIELD BOOK:	01 FOR CLIENT REVIEW	30/08/13
CHECKED: R. HOLMES	28/08/13	ORIGIN OF LEVELS:		
APPROVED:		DATUM: AHD		
DRAWING FILE: 4523_70.dwg		CIVILCAD FILE:		



CITY OF SHOALHAVEN
 Huskisson - Currambene Street
 Voyager Park - Anzac & HMAS Voyager Memorial
 Demolition Plan

SCALE:
 1:100 for A1 size plot, 1:200 for A3 size plot
 Do not scale off drawings.
 Confirm all dimensions on site prior to start of construction.
 NOTE:
 This drawing, design and the copyright therein are the property of Shoalhaven City Council. It has been produced by the Assets & Works - Project Delivery Section and must not be used, reproduced or copied wholly or in part without the permission of the Project Delivery Manager.

DIRECTOR ASSETS & WORKS: _____ DATE: _____
- PLAN REFERENCE -
4523_73



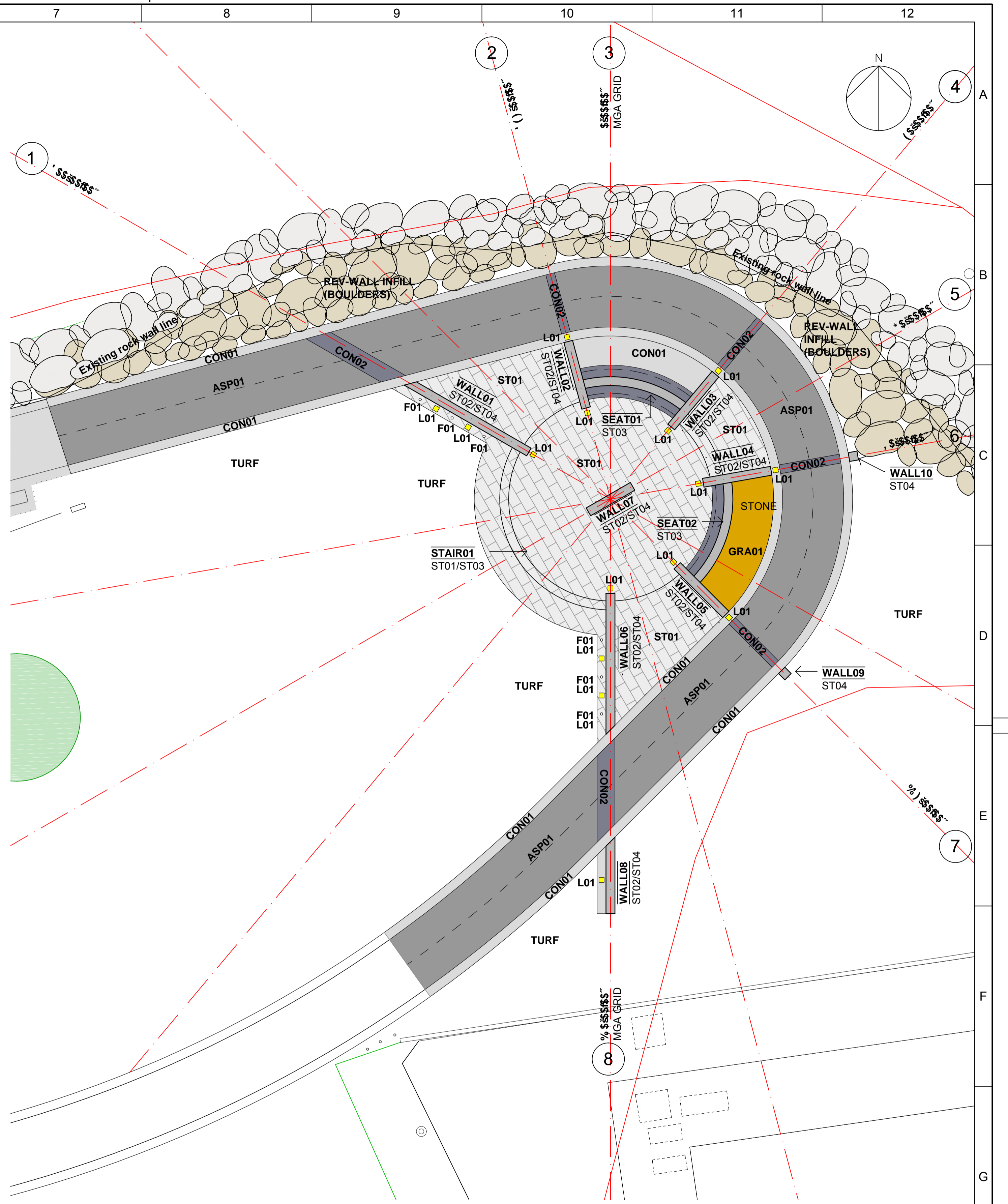
1 LAYOUT PLAN
SCALE 1:100

- LEGEND:**
- NOTE: REFER TO SCHEDULE OF FINISHES / ABBREVIATIONS.
REFER TO STRUCTURAL, CIVIL & ELECTRICAL ENGINEERS DETAILS
- SOP SETOUT POINT
 - FL 8.44 EXISTING FINISHED LEVEL
 - FL 9.40 PROPOSED FINISHED LEVEL
 - ASP01 - ASPHALT PATHWAY WITH CONCRETE BORDER (CON01). REFER TO STRUCTURAL DETAILS.
 - CON01 - CONCRETE PAVEMENT / EDGE BORDER. FINISH TO MATCH ADJOINING CONCRETE FINISH.
 - CON02 - CONCRETE PAVEMENT / DETAIL. FINISH AS SPECIFIED.
 - ST01 - STONE PAVERS WITH TEXT & PATTERNS ENGRAVED INTO SURFACE AS SPECIFIED. REFER TO DETAILS.
 - GRA01 - GRAVEL SURFACE BELOW MEMORABILIA AS SPECIFIED.
 - L01 IN-GROUND UP-LIGHTING. REFER TO ELECTRICAL ENGINEERS DETAILS. CONFIRM SET-OUT ON SITE.
 - F01 FLAGPOLE AS SPECIFIED. CONFIRM SETOUT ON SITE.

NOTE:
SETOUT TO BE APPROVED BY SUPERINTENDENT PRIOR TO COMMENCING.
THE POSITION OF SERVICES ARE TO BE VERIFIED ON SITE PRIOR TO COMMENCING WORK.

REFER TO CIVIL AND STRUCTURAL ENGINEERS DRAWINGS FOR SET OUT, LEVELS, JOINTING AND DETAILS ETC.

REFER TO ELECTRICAL ENGINEERS DETAILS FOR LIGHTING DETAILS ETC.



1 FINISHES PLAN
SCALE 1:100

DESIGNED: K. BARRIE 19/06/13	SURVEYED: K. ZAMMIT / E.VENHUIZEN 25/07/13	AMENDMENTS 01 FOR CLIENT REVIEW 30/08/13
DRAWN: K. BARRIE	FIELD BOOK:	
CHECKED: R. HOLMES 28/08/13	ORIGIN OF LEVELS:	
APPROVED: R. HOLMES 28/08/13	DATUM: AHD	
DRAWING FILE: 4523_70.dwg	CIVILCAD FILE:	



CITY OF SHOALHAVEN

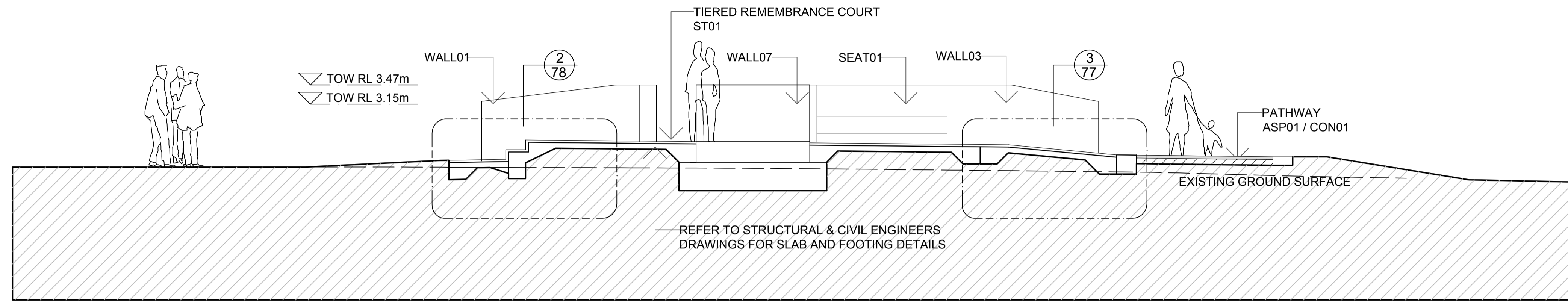
Huskisson - Currambene Street
Voyager Park - Anzac & HMAS Voyager Memorial
Layout Plan & Finishes Plan

SCALE:
1:100 for A1 size plot, 1:200 for A3 size plot
Do not scale off drawings.
Confirm all dimensions on site prior to start of construction.

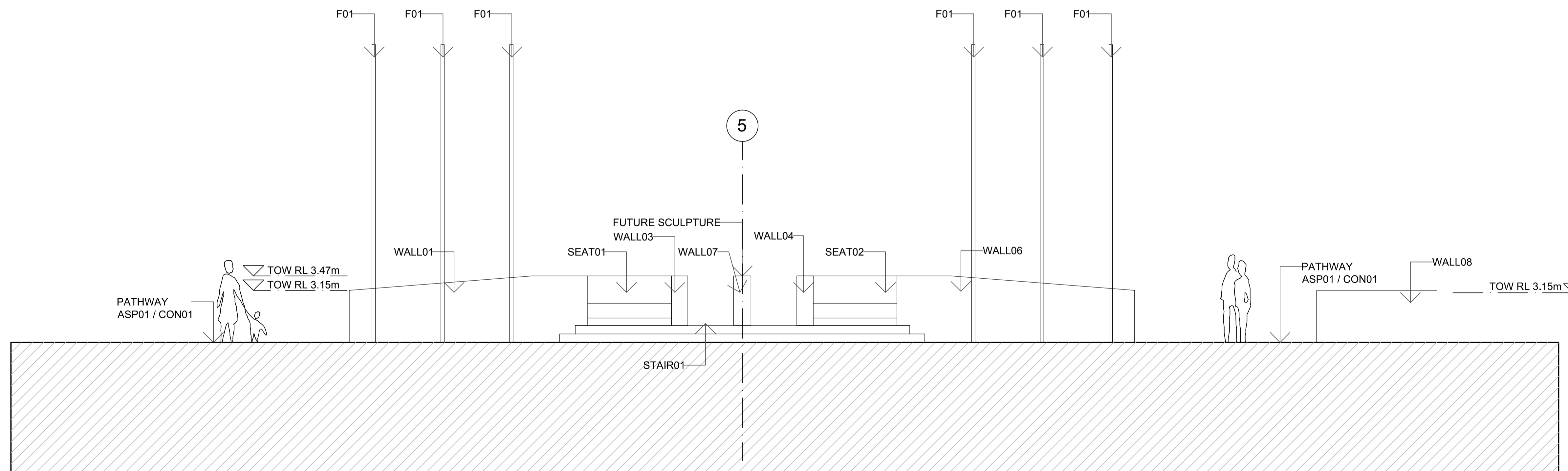
NOTE:
This drawing, design and the copyright therein are the property of Shoalhaven City Council. It has been produced by the Assets & Works - Project Delivery Section and must not be used, reproduced or copied wholly or in part without the permission of the Project Delivery Manager.

DIRECTOR ASSETS & WORKS:	DATE:
- PLAN REFERENCE - 4523_74	

NOTES:
 REFER TO STRUCTURAL & CIVIL ENGINEERS DOCUMENTATION.
 REFER TO ELECTRICAL ENGINEERS DOCUMENTATION.
 REFER TO SCHEDULE OF FINISHES AND ABBREVIATIONS.



1 CROSS SECTION 01
 SCALE 1:50



2 ELEVATION 01
 SCALE 1:50

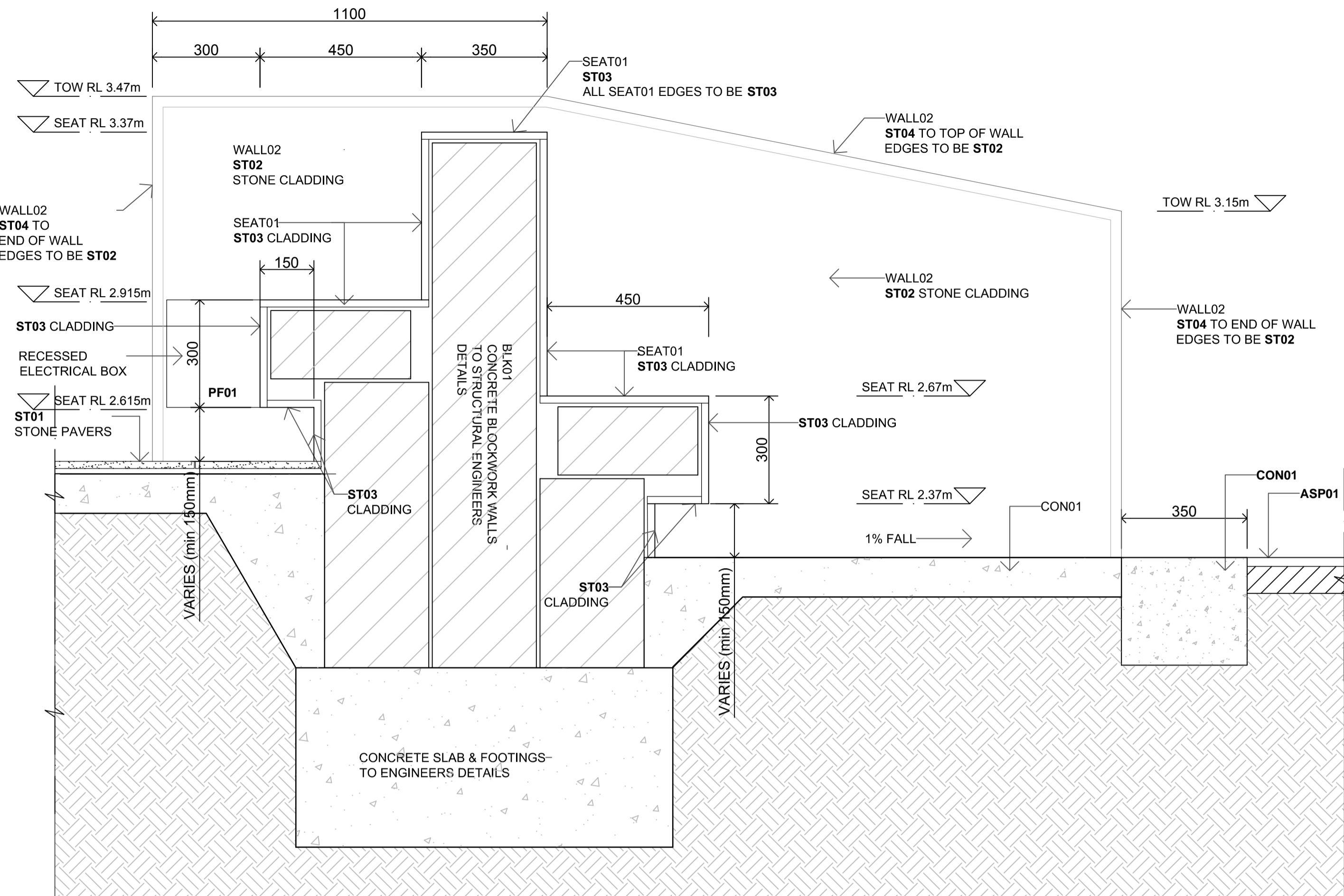
DESIGNED: K. BARRIE	19/06/13	SURVEYED: K. ZAMMIT / E.VENHUIZEN	AMENDMENTS	
DRAWN: K. BARRIE	25/07/13	FIELD BOOK:	01 FOR CLIENT REVIEW	30/08/13
CHECKED: R. HOLMES	28/08/13	ORIGIN OF LEVELS:		
APPROVED: R. HOLMES	28/08/13	DATUM: AHD		
DRAWING FILE: 4523_70.dwg		CIVILCAD FILE:		



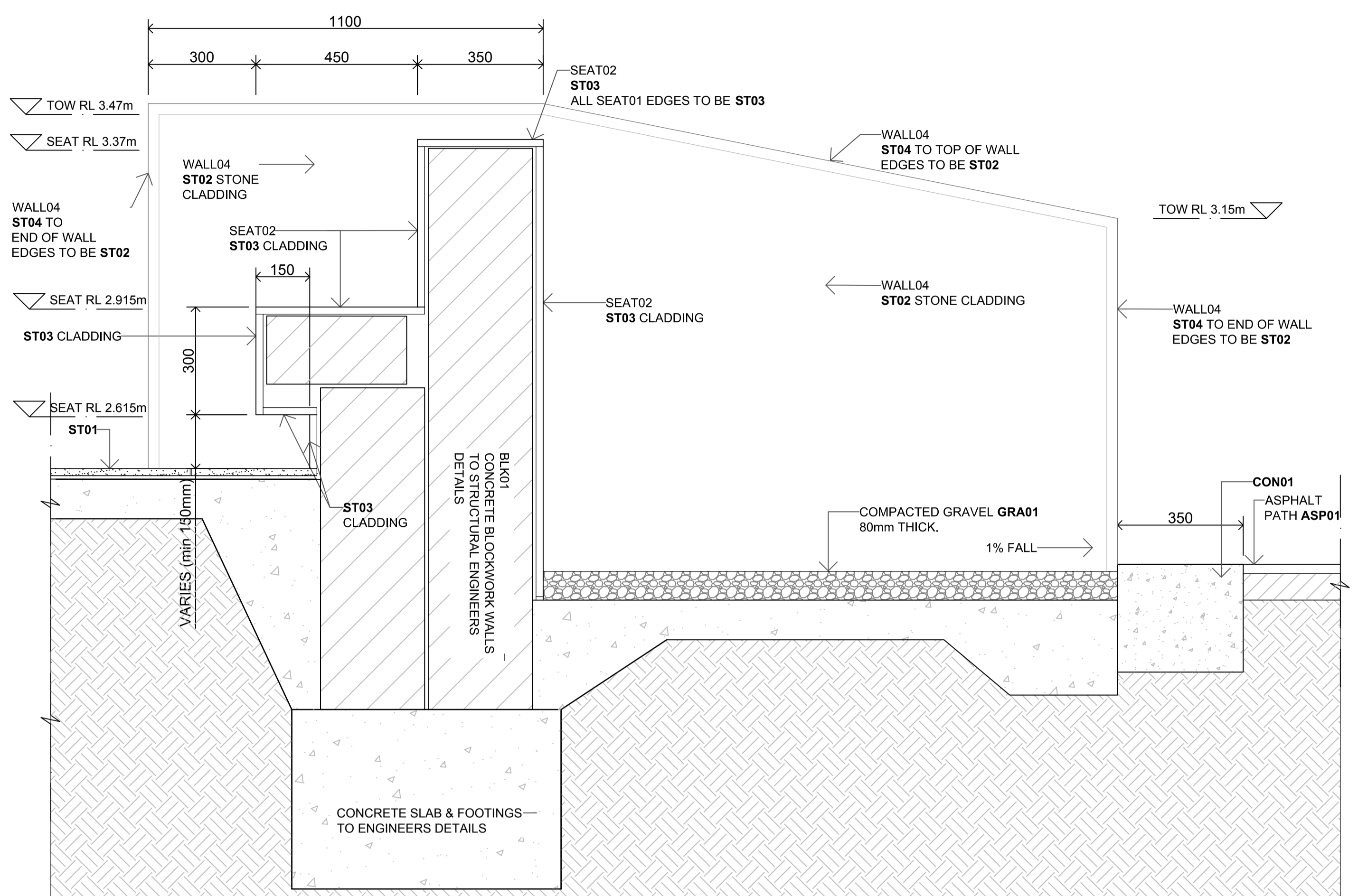
CITY OF SHOALHAVEN
 Huskisson - Currumbene Street
 Voyager Park - Anzac & HMAS Voyager Memorial
 Elevations & Sections

SCALE:
 1:50 for A1 size plot, 1:100 for A3 size plot
 Do not scale off drawings.
 Confirm all dimensions on site prior to start of construction.
 NOTE:
 This drawing, design and the copyright therein are the property of Shoalhaven City Council. It has been produced by the Assets & Works - Project Delivery Section and must not be used, reproduced or copied wholly or in part without the permission of the Project Delivery Manager.

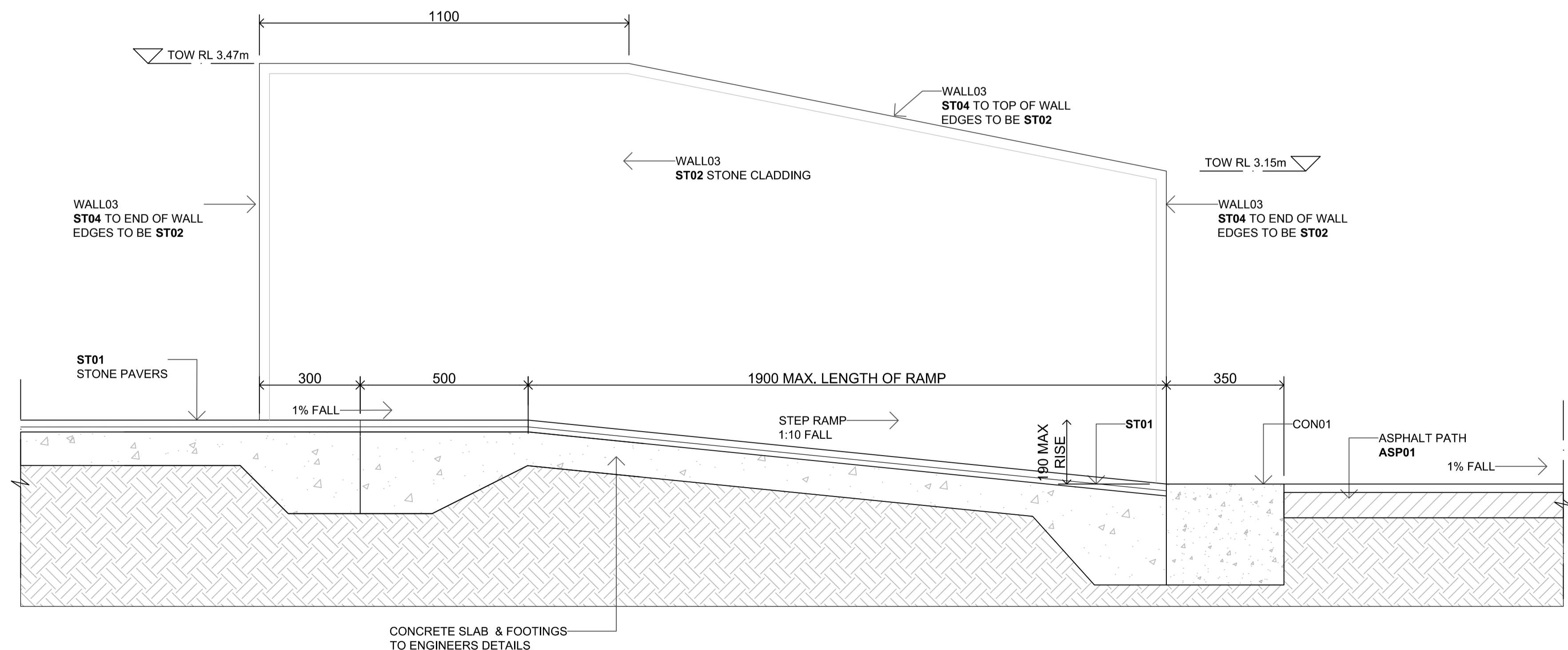
DIRECTOR ASSETS & WORKS: _____ DATE: _____
- PLAN REFERENCE -
4523_76



1 SEAT01 SECTION
SCALE 1:10



2 SEAT02 SECTION
SCALE 1:10



3 RAMP SECTION 01
SCALE 1:10

NOTES:
REFER TO STRUCTURAL & CIVIL ENGINEERS DOCUMENTATION.
REFER TO ELECTRICAL ENGINEERS DOCUMENTATION.
REFER TO SCHEDULE OF FINISHES AND ABBREVIATIONS.

NOTE:
FINISH PATHS (CONCRETE AND PAVED) FLUSH WITH ADJOINING SURFACES UNLESS DETAILED OTHERWISE.
PROVIDE CONSTRUCTION & CONTROL JOINTS AS INDICATED ON STRUCTURAL PLANS.
CROSS FALLS & SPOT HEIGHTS AS INDICATED ON CIVIL ENGINEERS DETAILS.
MAKE GOOD TO ALL DISTURBED AREAS

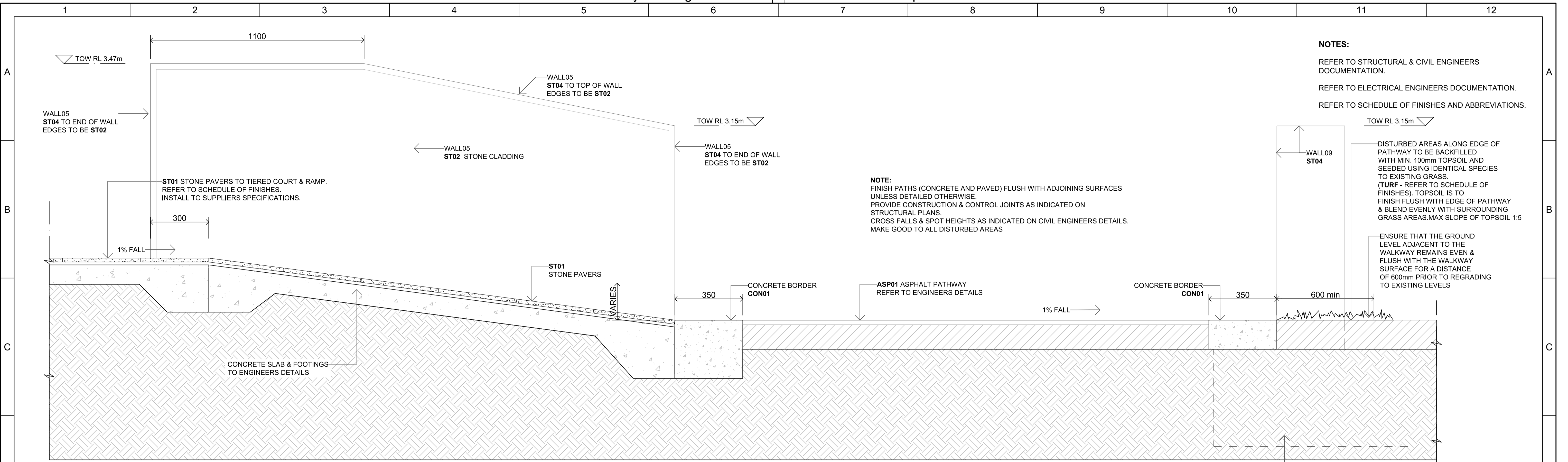
DESIGNED: K. BARRIE	19/06/13	SURVEYED: K. ZAMMIT / E.VENHUIZEN	AMENDMENTS
DRAWN: K. BARRIE	25/07/13	FIELD BOOK:	01 FOR CLIENT REVIEW 30/08/13
CHECKED: R. HOLMES	28/08/13	ORIGIN OF LEVELS:	
APPROVED: R. HOLMES	28/08/13	DATUM: AHD	
DRAWING FILE: 4523_70.dwg		CIVILCAD FILE:	



CITY OF SHOALHAVEN
Huskisson - Currumbene Street
Voyager Park - Anzac & HMAS Voyager Memorial
Details - Wall, Seat and Ramp Sections

SCALE:
1:10 for A1 size plot, 1:20 for A3 size plot
Do not scale off drawings.
Confirm all dimensions on site prior to start of construction.
NOTE:
This drawing, design and the copyright therein are the property of Shoalhaven City Council. It has been produced by the Assets & Works - Project Delivery Section and must not be used, reproduced or copied wholly or in part without the permission of the Project Delivery Manager.

DIRECTOR ASSETS & WORKS: DATE:
- PLAN REFERENCE -
4523_77

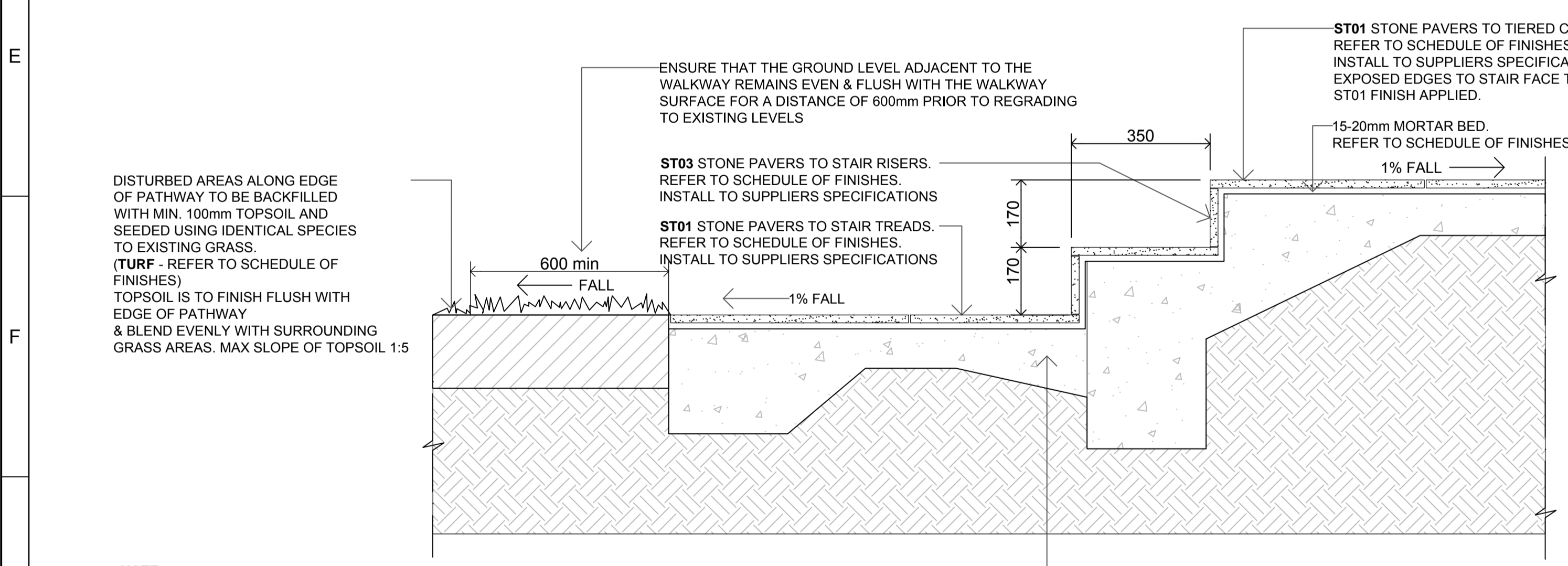


NOTES:
 REFER TO STRUCTURAL & CIVIL ENGINEERS DOCUMENTATION.
 REFER TO ELECTRICAL ENGINEERS DOCUMENTATION.
 REFER TO SCHEDULE OF FINISHES AND ABBREVIATIONS.

NOTE:
 FINISH PATHS (CONCRETE AND PAVED) FLUSH WITH ADJOINING SURFACES UNLESS DETAILED OTHERWISE.
 PROVIDE CONSTRUCTION & CONTROL JOINTS AS INDICATED ON STRUCTURAL PLANS.
 CROSS FALLS & SPOT HEIGHTS AS INDICATED ON CIVIL ENGINEERS DETAILS.
 MAKE GOOD TO ALL DISTURBED AREAS


DISTURBED AREAS ALONG EDGE OF PATHWAY TO BE BACKFILLED WITH MIN. 100mm TOPSOIL AND SEEDED USING IDENTICAL SPECIES TO EXISTING GRASS.
 (TURF - REFER TO SCHEDULE OF FINISHES). TOPSOIL IS TO FINISH FLUSH WITH EDGE OF PATHWAY & BLEND EVENLY WITH SURROUNDING GRASS AREAS. MAX SLOPE OF TOPSOIL 1:5
 ENSURE THAT THE GROUND LEVEL ADJACENT TO THE WALKWAY REMAINS EVEN & FLUSH WITH THE WALKWAY SURFACE FOR A DISTANCE OF 600mm PRIOR TO REGRADING TO EXISTING LEVELS

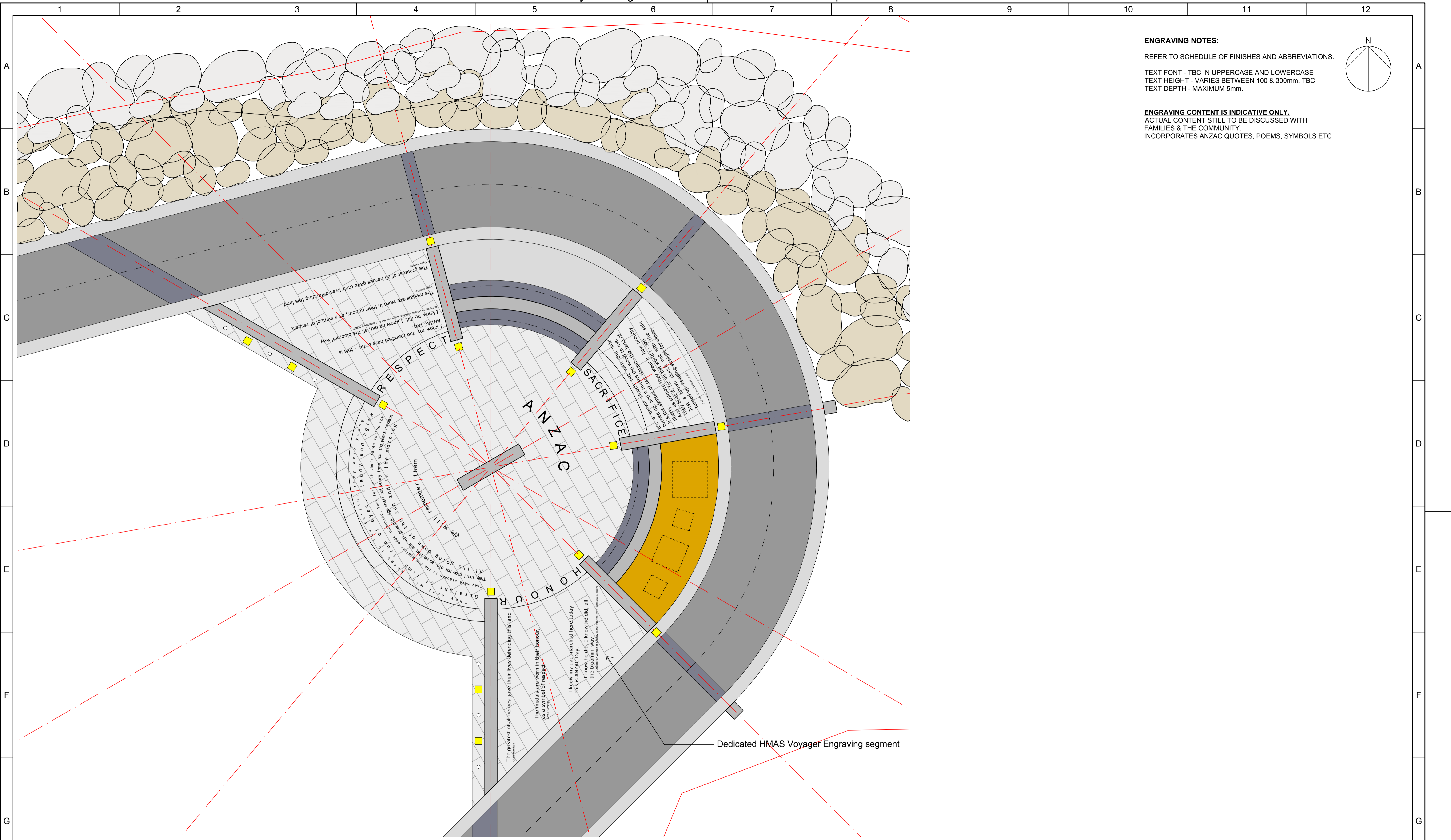
1 RAMP SECTION 02
 SCALE 1:10



NOTE:
 ST01 PAVER SHOULD BE FULLY ADHERED TO THE CONCRETE SLAB.
 NO MOISTURE SHOULD BE RETAINED BENEATH PAVER.
 INSTALL TO MANUFACTURERS DETAILS.
 REFER TO SCHEDULE OF FINISHES FOR ADDITIONAL INFORMATION

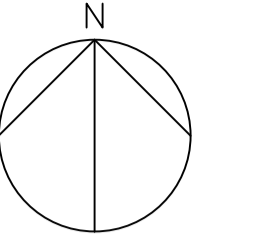
2 STAIR 01 SECTION
 SCALE 1:10

DESIGNED: K. BARRIE 19/06/13	SURVEYED: K. ZAMMIT / E.VENHUIZEN 25/07/13	AMENDMENTS 01 FOR CLIENT REVIEW 30/08/13			<p>CITY OF SHOALHAVEN Huskisson - Currumbene Street Voyager Park - Anzac & HMAS Voyager Memorial Details - Wall, Stair & Ramp Sections</p>	SCALE: 1:100 for A1 size plot, 1:200 for A3 size plot Do not scale off drawings. Confirm all dimensions on site prior to start of construction.	DIRECTOR ASSETS & WORKS: _____ DATE: _____
DRAWN: K. BARRIE 25/07/13	FIELD BOOK: _____					<p>- PLAN REFERENCE - 4523_78</p>	
CHECKED: R. HOLMES 28/08/13	ORIGIN OF LEVELS: _____						
APPROVED: R. HOLMES 28/08/13	DATUM: AHD						
DRAWING FILE: 4523_70.dwg	CIVILCAD FILE: _____						



ENGRAVING NOTES:
 REFER TO SCHEDULE OF FINISHES AND ABBREVIATIONS.
 TEXT FONT - TBC IN UPPERCASE AND LOWERCASE
 TEXT HEIGHT - VARIES BETWEEN 100 & 300mm. TBC
 TEXT DEPTH - MAXIMUM 5mm.

ENGRAVING CONTENT IS INDICATIVE ONLY.
 ACTUAL CONTENT STILL TO BE DISCUSSED WITH
 FAMILIES & THE COMMUNITY.
 INCORPORATES ANZAC QUOTES, POEMS, SYMBOLS ETC



1 ENGRAVING PLAN (ST01)
 SCALE 1:50

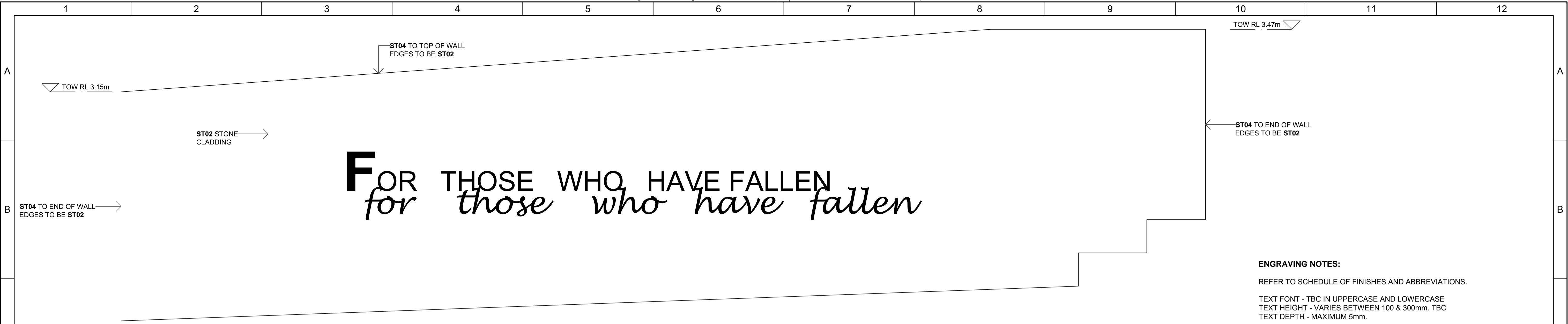
DESIGNED: K. BARRIE	19/06/13	SURVEYED: K. ZAMMIT / E.VENHUIZEN	AMENDMENTS
DRAWN: K. BARRIE	25/07/13	FIELD BOOK:	01 FOR CLIENT REVIEW 30/08/13
CHECKED: R. HOLMES	28/08/13	ORIGIN OF LEVELS:	
APPROVED: R. HOLMES	28/08/13	DATUM: AHD	
DRAWING FILE: 4523_70.dwg		CIVILCAD FILE:	



CITY OF SHOALHAVEN
 Huskisson - Currumbene Street
 Voyager Park - Anzac & HMAS Voyager Memorial
 Details - Engraving Remembrance Court Plan

SCALE:
 1:50 for A1 size plot, 1:100 for A3 size plot
 Do not scale off drawings.
 Confirm all dimensions on site prior to start of construction.
 NOTE:
 This drawing, design and the copyright therein are the property of Shoalhaven City Council. It has been produced by the Assets & Works - Project Delivery Section and must not be used, reproduced or copied wholly or in part without the permission of the Project Delivery Manager.

DIRECTOR ASSETS & WORKS:	DATE:
- PLAN REFERENCE - 4523_79	



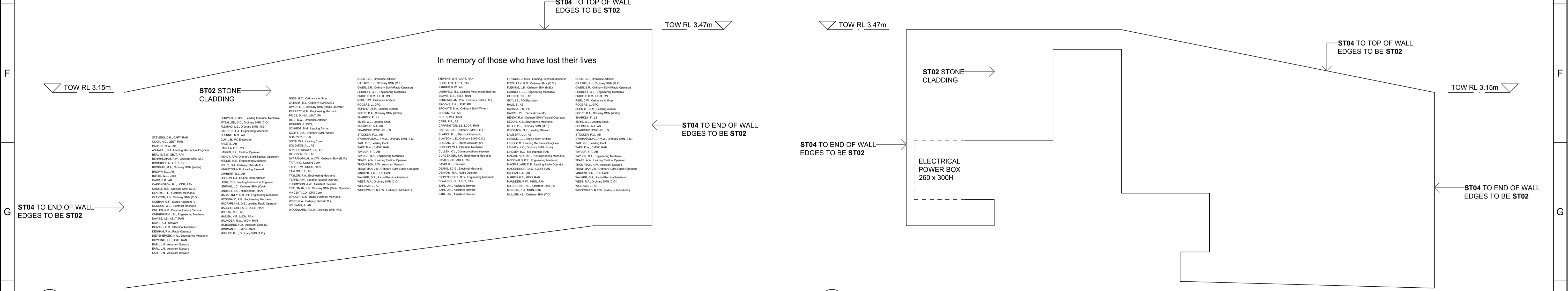
1 WALL01 ELEVATION-A (South West) SCALE 1:10

ENGRAVING NOTES:
 REFER TO SCHEDULE OF FINISHES AND ABBREVIATIONS.
 TEXT FONT - TBC IN UPPERCASE AND LOWERCASE
 TEXT HEIGHT - VARIES BETWEEN 100 & 300mm. TBC
 TEXT DEPTH - MAXIMUM 5mm.

ENGRAVING CONTENT IS INDICATIVE ONLY.
 ACTUAL CONTENT STILL TO BE DISCUSSED WITH FAMILIES & THE COMMUNITY.
 INCORPORATES ANZAC QUOTES, POEMS, SYMBOLS ETC



2 WALL01 ELEVATION-B (North East) - Dedicated ANZAC Wall SCALE 1:10

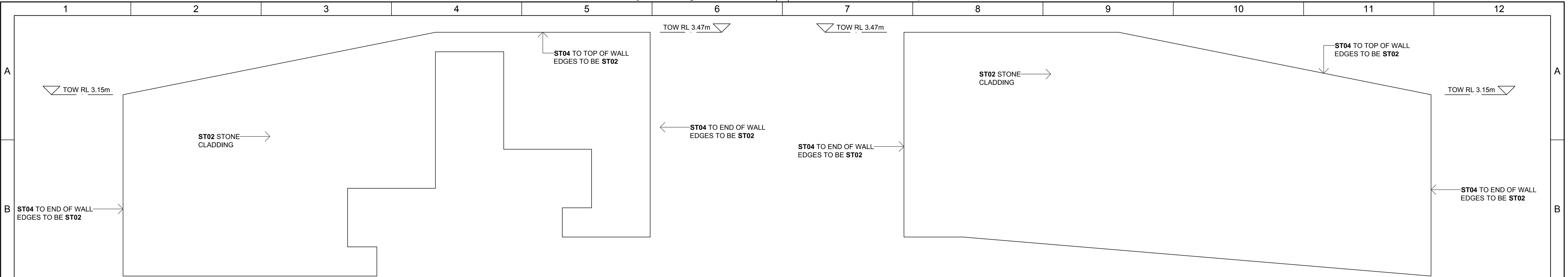


3 WALL02 ELEVATION-A (South West - Ramp side) - Dedicated ANZAC Wall SCALE 1:10

4 WALL02 ELEVATION-B (North East - Seat01 side) SCALE 1:10

DESIGNED: K. BARRIE 19/06/13	SURVEYED: K. ZAMMIT / E. VENHUIZEN 25/07/13	AMENDMENTS 01 FOR CLIENT REVIEW 30/08/13	<p>CITY OF SHOALHAVEN Huskisson - Currumbene Street Voyager Park - Anzac & HMAS Voyager Memorial Details - Wall Engraving Elevations - Sheet 01</p>	SCALE: 1:10 for A1 size plot, 1:20 for A3 size plot Do not scale off drawings. Confirm all dimensions on site prior to start of construction. NOTE: This drawing, design and the copyright therein are the property of Shoalhaven City Council. It has been produced by the Assets & Works - Project Delivery Section and must not be used, reproduced or copied wholly or in part without the permission of the Project Delivery Manager.	DIRECTOR ASSETS & WORKS: _____ DATE: _____
DRAWN: K. BARRIE 25/07/13	FIELD BOOK:				
CHECKED: R. HOLMES 28/08/13	ORIGIN OF LEVELS:				
APPROVED: R. HOLMES 28/08/13	DATUM: AHD				
DRAWING FILE: 4523_70.dwg	CIVILCAD FILE:				

- PLAN REFERENCE - 4523_80

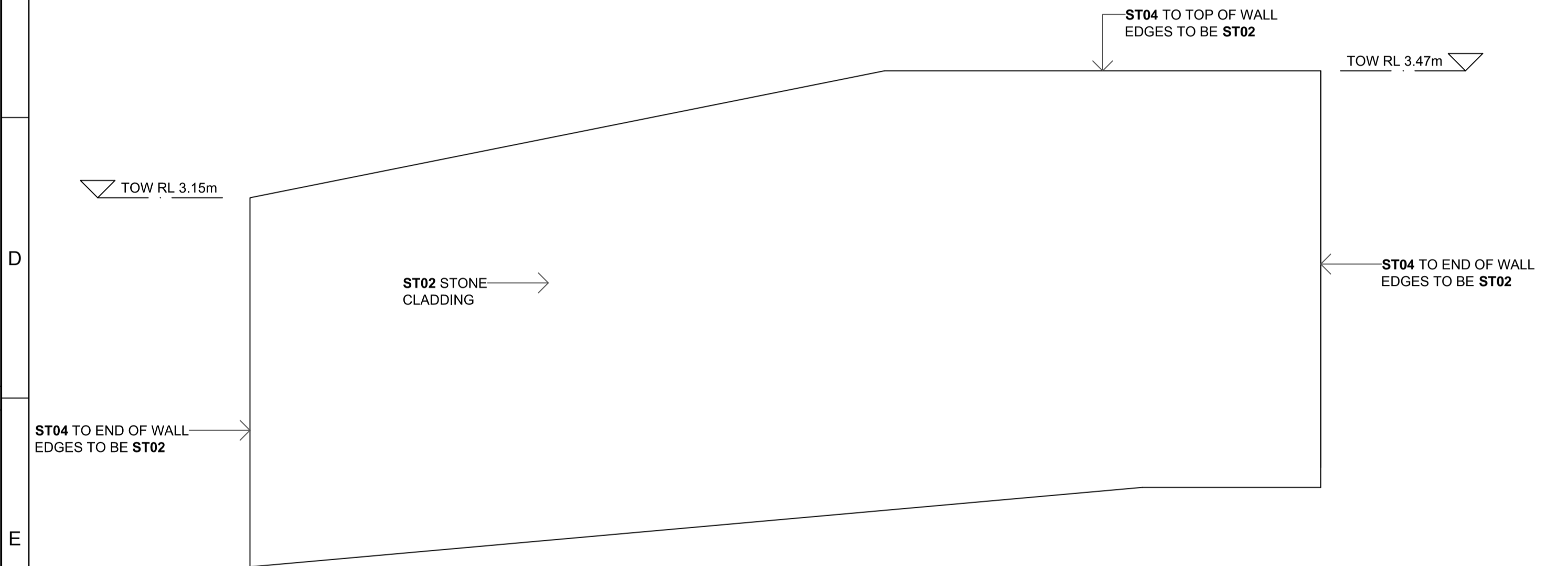


1 WALL03 ELEVATION-A (North West - Seat Side)
SCALE 1:10

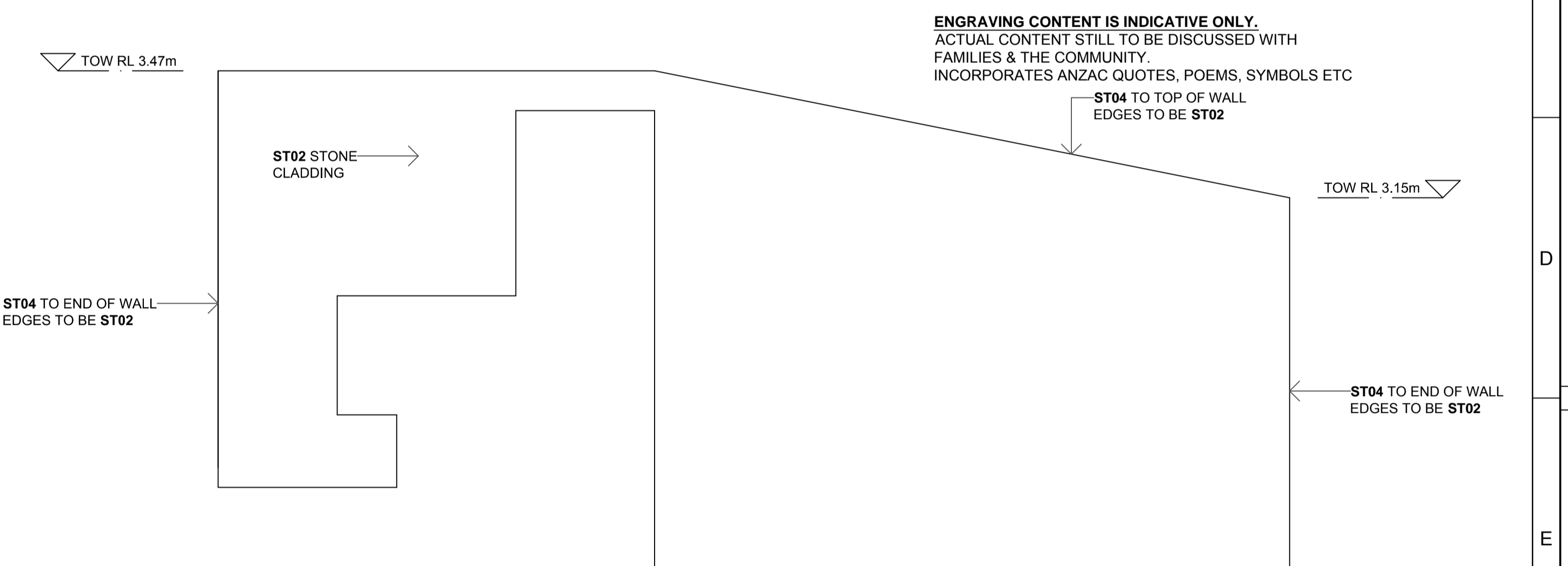
2 WALL03 ELEVATION-B (South East - Ramp Side)
SCALE 1:10

ENGRAVING NOTES:
REFER TO SCHEDULE OF FINISHES AND ABBREVIATIONS.
TEXT FONT - TBC IN UPPERCASE AND LOWERCASE
TEXT HEIGHT - VARIES BETWEEN 100 & 300mm. TBC
TEXT DEPTH - MAXIMUM 5mm.

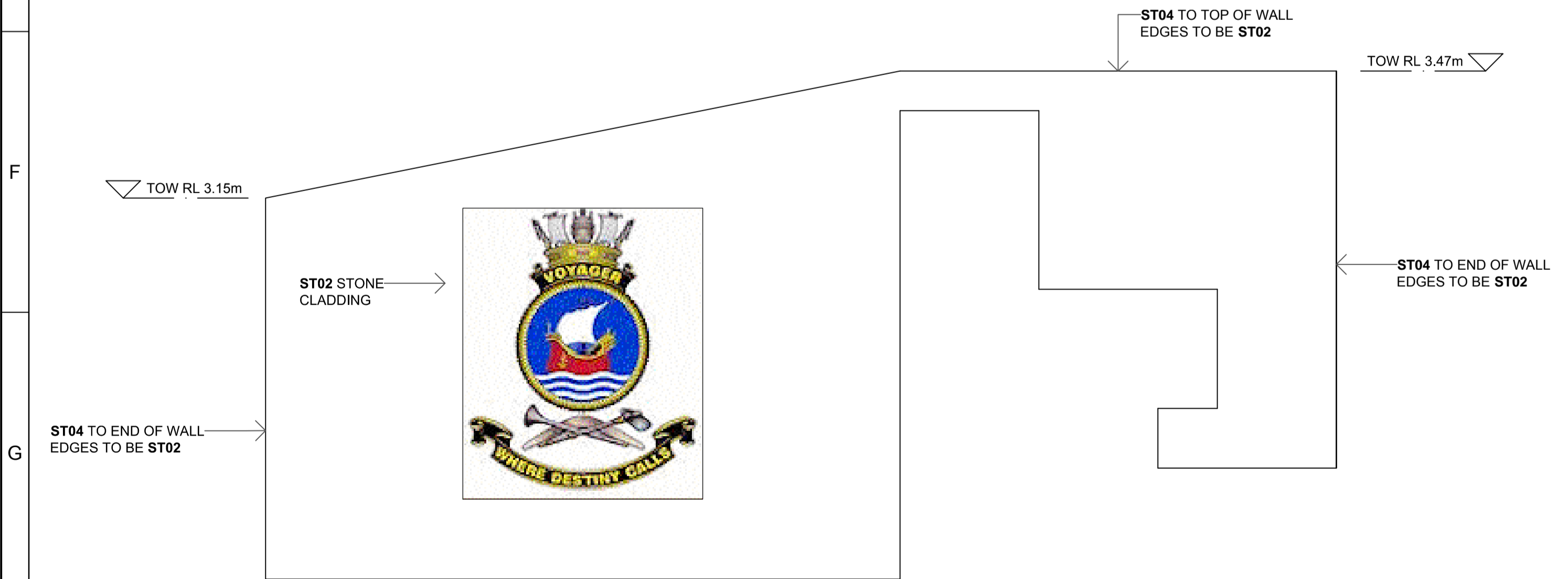
ENGRAVING CONTENT IS INDICATIVE ONLY.
ACTUAL CONTENT STILL TO BE DISCUSSED WITH
FAMILIES & THE COMMUNITY.
INCORPORATES ANZAC QUOTES, POEMS, SYMBOLS ETC



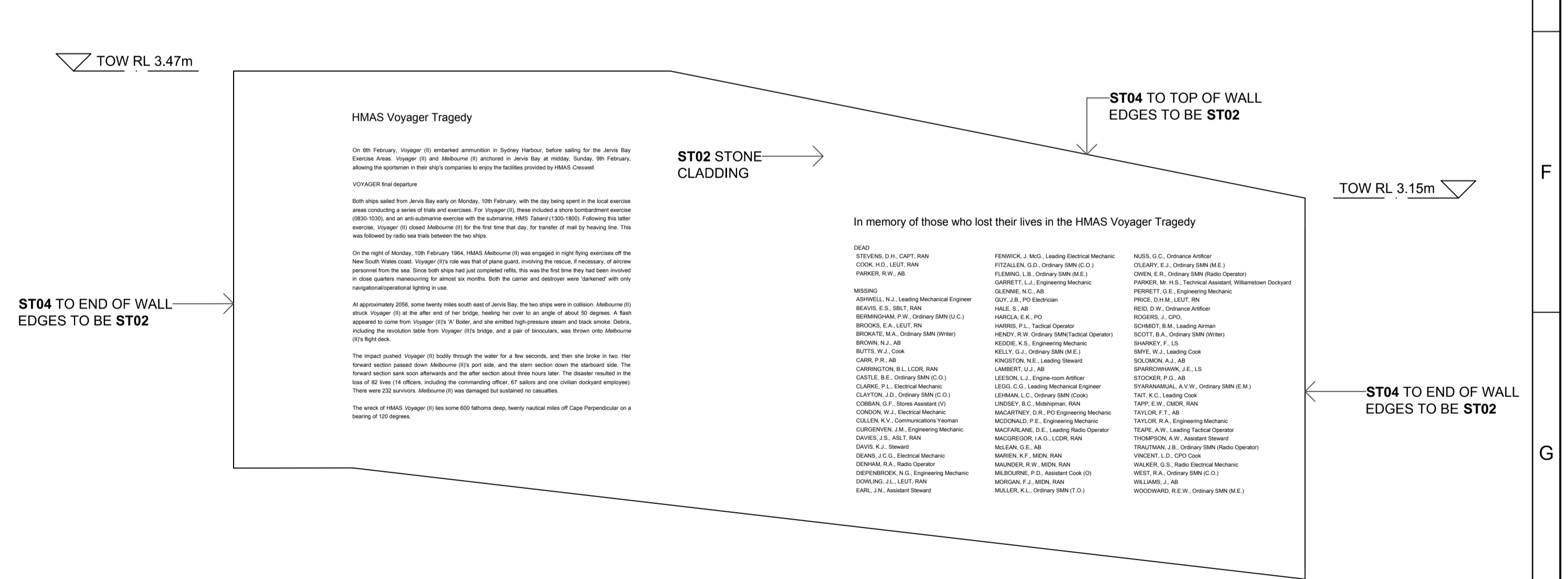
3 WALL04 ELEVATION-A (North - Ramp Side)
SCALE 1:10



4 WALL04 ELEVATION-B (South - Seat Side)
SCALE 1:10



5 WALL05 ELEVATION-A (North East - Seat Side) - Dedicated HMAS Voyager Wall
SCALE 1:10



6 WALL05 ELEVATION-B (South West - Ramp Side) - Dedicated HMAS Voyager Wall
SCALE 1:10

DESIGNED: K. BARRIE	19/06/13	SURVEYED: K. ZAMMIT / E.VENHUIZEN	AMENDMENTS
DRAWN: K. BARRIE	25/07/13	FIELD BOOK:	01 FOR CLIENT REVIEW 30/08/13
CHECKED: R. HOLMES	28/08/13	ORIGIN OF LEVELS:	
APPROVED: R. HOLMES	28/08/13	DATUM: AHD	
DRAWING FILE: 4523_70.dwg		CIVILCAD FILE:	

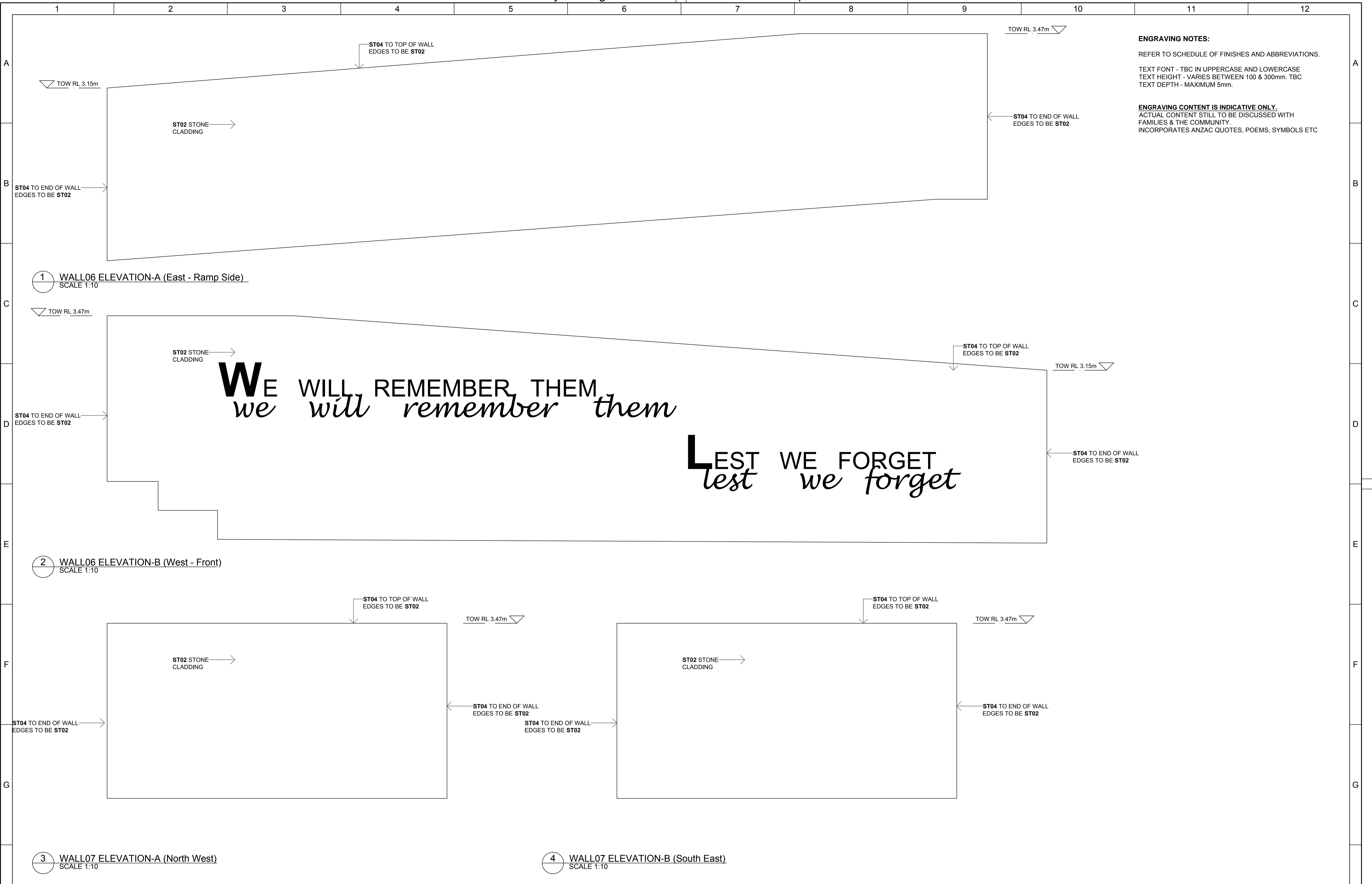



CITY OF SHOALHAVEN
Huskisson - Currumbene Street
Voyager Park - Anzac & HMAS Voyager Memorial
Details - Wall Engraving Elevations - Sheet 02

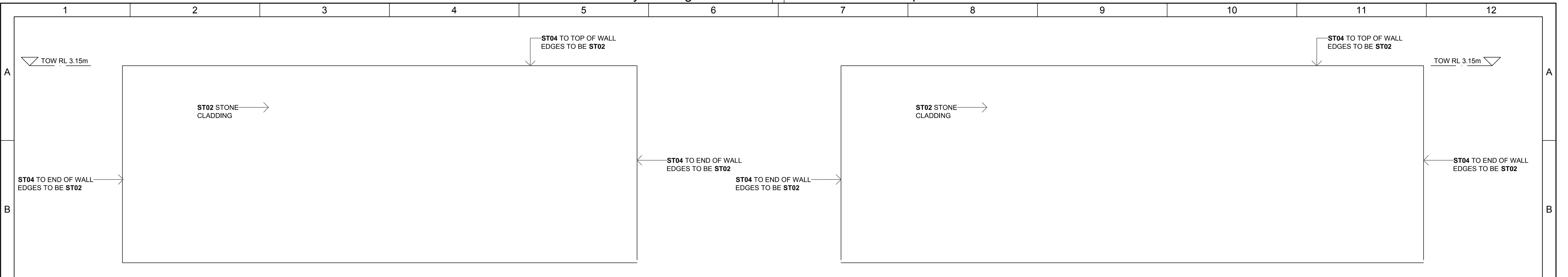
SCALE:
1:10 for A1 size plot, 1:20 for A3 size plot
Do not scale off drawings.
Confirm all dimensions on site prior to start of construction.
NOTE:
This drawing, design and the copyright therein are the property of Shoalhaven City Council. It has been produced by the Assets & Works - Project Delivery Section and must not be used, reproduced or copied wholly or in part without the permission of the Project Delivery Manager.

DIRECTOR ASSETS & WORKS: _____ DATE: _____

- PLAN REFERENCE -
4523_81



DESIGNED: K. BARRIE 19/06/13	SURVEYED: K. ZAMMIT / E.VENHUIZEN 25/07/13	AMENDMENTS		 <p>CITY OF SHOALHAVEN Huskisson - Currambene Street Voyager Park - Anzac & HMAS Voyager Memorial Details - Wall Engraving Elevations - Sheet 03</p>	SCALE: 1:100 for A1 size plot, 1:200 for A3 size plot Do not scale off drawings. Confirm all dimensions on site prior to start of construction.	DIRECTOR ASSETS & WORKS: _____ DATE: _____
DRAWN: K. BARRIE	FIELD BOOK:	01	FOR CLIENT REVIEW		30/08/13	<p>- PLAN REFERENCE - 4523_82</p>
CHECKED: R. HOLMES	ORIGIN OF LEVELS:					
APPROVED: R. HOLMES	DATUM: AHD					
DRAWING FILE: 4523_70.dwg	CIVILCAD FILE:					

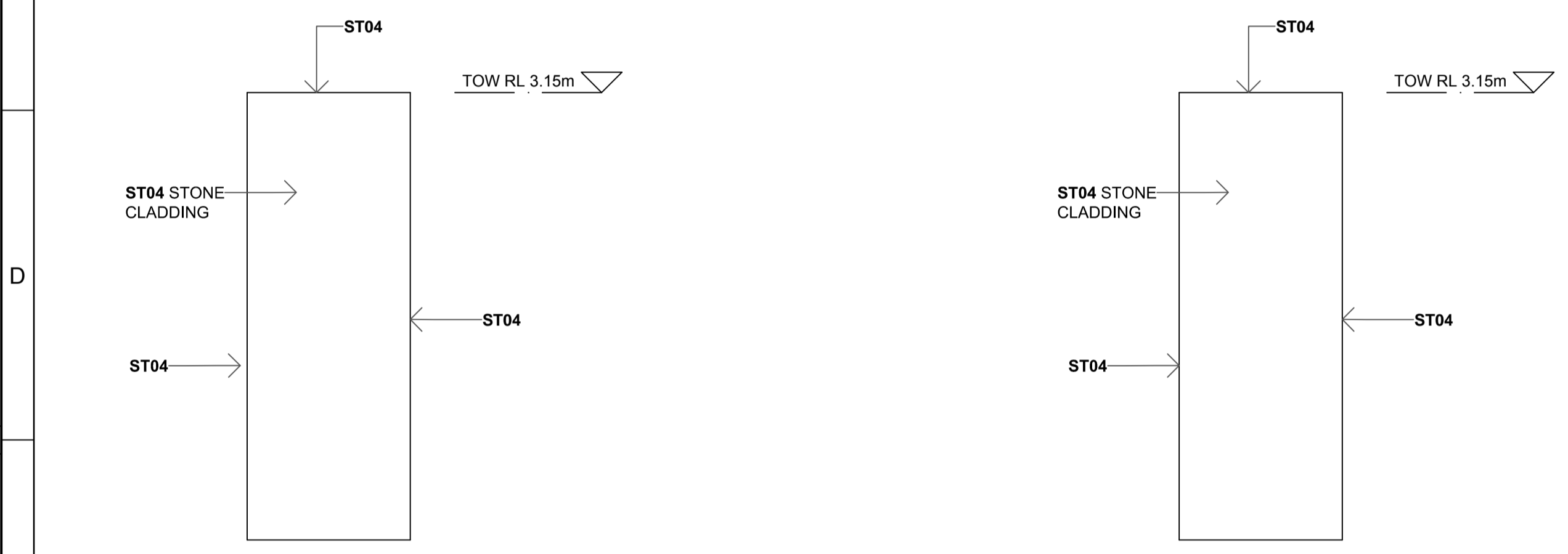


1 WALL08 ELEVATION-A (West)
SCALE 1:10

2 WALL08 ELEVATION-B (East)
SCALE 1:10


ENGRAVING NOTES:
REFER TO SCHEDULE OF FINISHES AND ABBREVIATIONS.
TEXT FONT - TBC IN UPPERCASE AND LOWERCASE
TEXT HEIGHT - VARIES BETWEEN 100 & 300mm. TBC
TEXT DEPTH - MAXIMUM 5mm.

ENGRAVING CONTENT IS INDICATIVE ONLY.
ACTUAL CONTENT STILL TO BE DISCUSSED WITH
FAMILIES & THE COMMUNITY.
INCORPORATES ANZAC QUOTES, POEMS, SYMBOLS ETC



3 WALL09/10 ELEVATION-A (North East)
SCALE 1:10

4 WALL09/10 ELEVATION-B (South West)
SCALE 1:10

DESIGNED: K. BARRIE 19/06/13	SURVEYED: K. ZAMMIT / E.VENHUIZEN 25/07/13	AMENDMENTS		 <p>CITY OF SHOALHAVEN Huskisson - Currambene Street Voyager Park - Anzac & HMAS Voyager Memorial Details - Wall Engraving Elevations - Sheet 04</p>	SCALE: 1:100 for A1 size plot, 1:200 for A3 size plot Do not scale off drawings. Confirm all dimensions on site prior to start of construction. NOTE: This drawing, design and the copyright therein are the property of Shoalhaven City Council. It has been produced by the Assets & Works - Project Delivery Section and must not be used, reproduced or copied wholly or in part without the permission of the Project Delivery Manager.	DIRECTOR ASSETS & WORKS: _____ DATE: _____
DRAWN: K. BARRIE 25/07/13	FIELD BOOK:	01	FOR CLIENT REVIEW		30/08/13	<p align="center">- PLAN REFERENCE - 4523_83</p>
CHECKED: R. HOLMES 28/08/13	ORIGIN OF LEVELS:					
APPROVED: R. HOLMES 28/08/13	DATUM: AHD					
DRAWING FILE: 4523_70.dwg	CIVILCAD FILE:					