



## BROUGHTON VALE PARKCARE ACTION PLAN

**Document Number:** D13/102540 • **Adopted:** 8/10/2013 • **Minute Number:** d13/261029 •  
**File:** 37850e • **Produced By:** Assets & Works Group • **Review Date:** 30/6/2016

### CONTACT INFORMATION

<b>Group Name:</b>	Broughton Vale Parkcare Group
<b>Contact:</b>	Adam Little
<b>Address:</b>	350 Broughton Vale Rd C/- PO Box 35 Berry NSW
<b>Telephone:</b>	0427 775 856
<b>Email:</b>	adam@sunninghillpark.com.au
<b>Reserve Name:</b>	Broughton Vale Reserve
<b>Reserve Number:</b>	NBR002
<b>Land Tenure:</b>	Shoalhaven City Council <b>Comm. Land Type:</b> Natural Area

### 1. PARKCARE GROUP GOALS

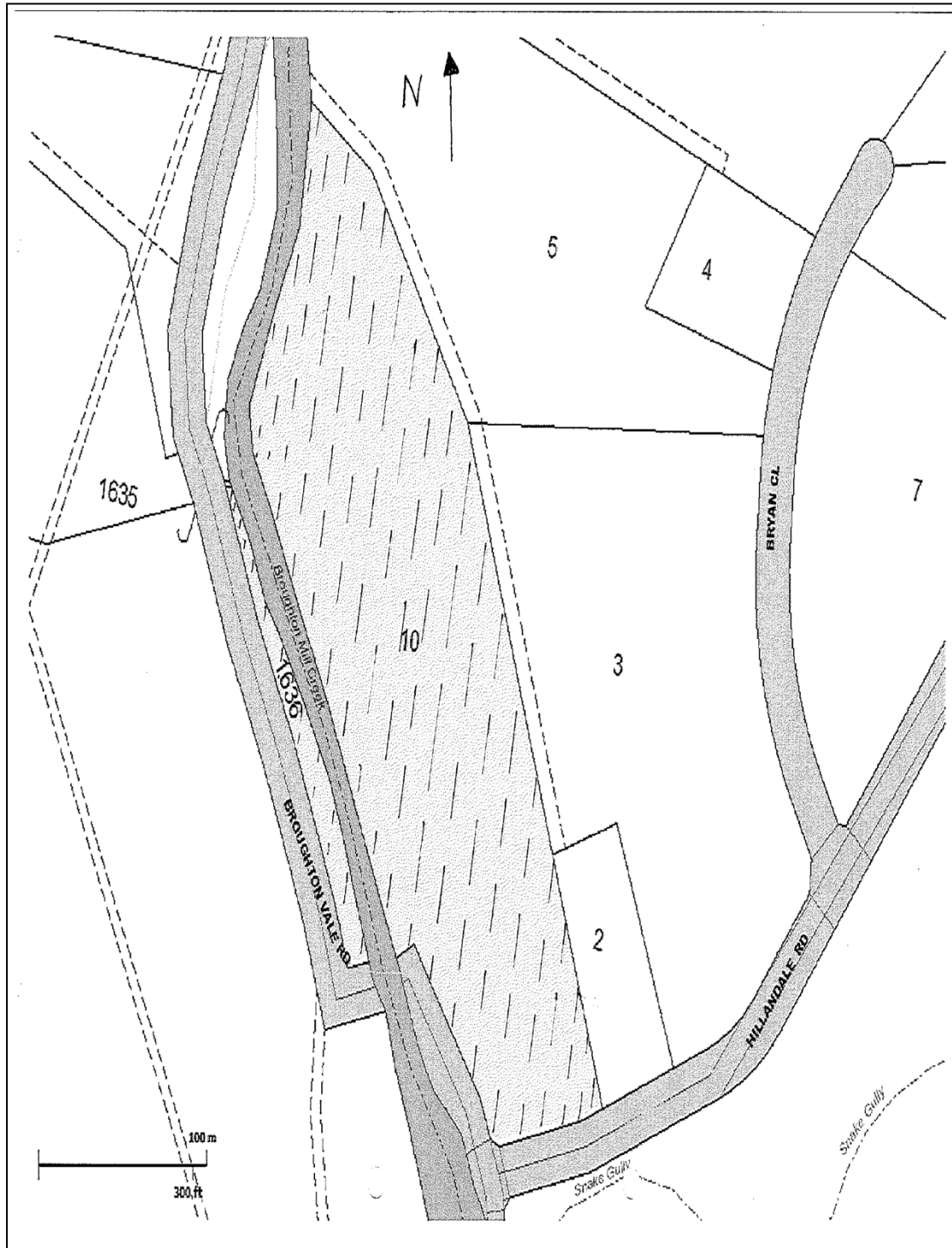
Mow and maintain Broughton Vale Reserve and creek bank to supplement Council reserves maintenance schedules.
--

**2. SHOALHAVEN PARKCARE GROUP ACTIVITIES TABLE (to be in conjunction with attached site map)**

**NOTE: Priority should be rated as H = High (within 12 months); M = Medium (1-3 years); L = Low**

<b>GROUP ACTION</b>	<b>PRIORITY</b>	<b>METHOD</b>	<b>TIME</b>
Slash broad acre to control fireweed	H	Tractor	Ongoing
Remove 2 strand wire fence	H	By hand	1 year
Plant trees to supplement previously approved regeneration area along creek bank	H	By hand	Ongoing
Maintain and mulch around planted trees for noxious weed control	H	By hand	Ongoing

### 3. PARKCARE GROUP ACTION PLAN MAP



#### 4. PARKCARE GROUP WHS & EQUIPMENT REQUIREMENTS

Type of Activity	Yes	SWMS name included
Landscape Construction & Maintenance	Yes	01571
Operate maintain Ride On mower/Tractor	Yes	SWMS725
Weed Control Activities	Yes	NR060

#### 5. COUNCIL SUPPORT

Council will provide

- PPE
- Horticultural materials

#### 6. HAS A SITE HAZARD AND RISK ASSESSMENT BEEN COMPLETED FOR THE PARKCARE SITE?

Yes

#### 7. LIST THE PERSONAL PROTECTION EQUIPMENT REQUIRED FOR VOLUNTEERS WHILST WORKING ON THE SITE

PPE Equipment Required	Date issued
First Aid Kit	To be provided on plan approval
Gloves	To be provided on plan approval
Sunscreen	To be provided on plan approval
Insect repellent	To be provided on plan approval

#### 8. POSSIBLE FUTURE FUNDING

Project	Funding source
No future projects nominated	

#### 9. PLAN WILL BE REVIEWED EVERY THREE YEARS - 2016

#### 10. PLEASE LIST OTHER LOCAL OR REGIONAL MANAGEMENT PLANS OR STRATEGIES THAT THIS PLAN RELATES TO

<b>Name of document</b>	<b>Year it was produced</b>	<b>Produced by</b>
Generic Community land Plan of Management – Natural Area	2013	Strategic Planning & Infrastructure Groups

## 11. RECOMMENDED PLANTING/REVEGETATION SPECIES LIST

<b>OVERSTOREY TREES</b>	
<b>Botanical</b>	<b>Common</b>
Acacia binervata	Two-Veined Hickory
Acmena smithii	Lilly Pilly
Allocasuarina littoralis	Black Sheoak
Angophora floribunda	Rough-Barked Apple
Brachychiton acerifolius	Illawarra Flame Tree
Casuarina cunninghamiana	River Oak
Ceratopetalum apetalum	Coachwood
Ehretia acuminata	Ehretia
Eucalyptus punctata subsp. punctata	Grey Gum
Eucalyptus agglomerata	Blue-leaved Stringybark
Eucalyptus botryoides	Bangalay
Eucalyptus saligna	Sydney Blue Gum
Glochidion ferdinandi	Cheese Tree
Podocarpus elatus	Illawarra Plum
Syncarpia glomulifera	Turpentine
Toona ciliata	Red Cedar
Tristaniopsis laurina	Water Gum

## 12. SITE WEED LIST

<b>Noxious</b>	<b>Environmental</b>	<b>Control Method</b>
	Fireweed	By Slasher
	Lantana	By hand
	Scotch Thistle	By hand

**Parkcare Group Name:** Broughton Vale Parkcare Group

**Coordinator Name:** Adam Little

**Signature:** .....

**Date:** ...../...../.....