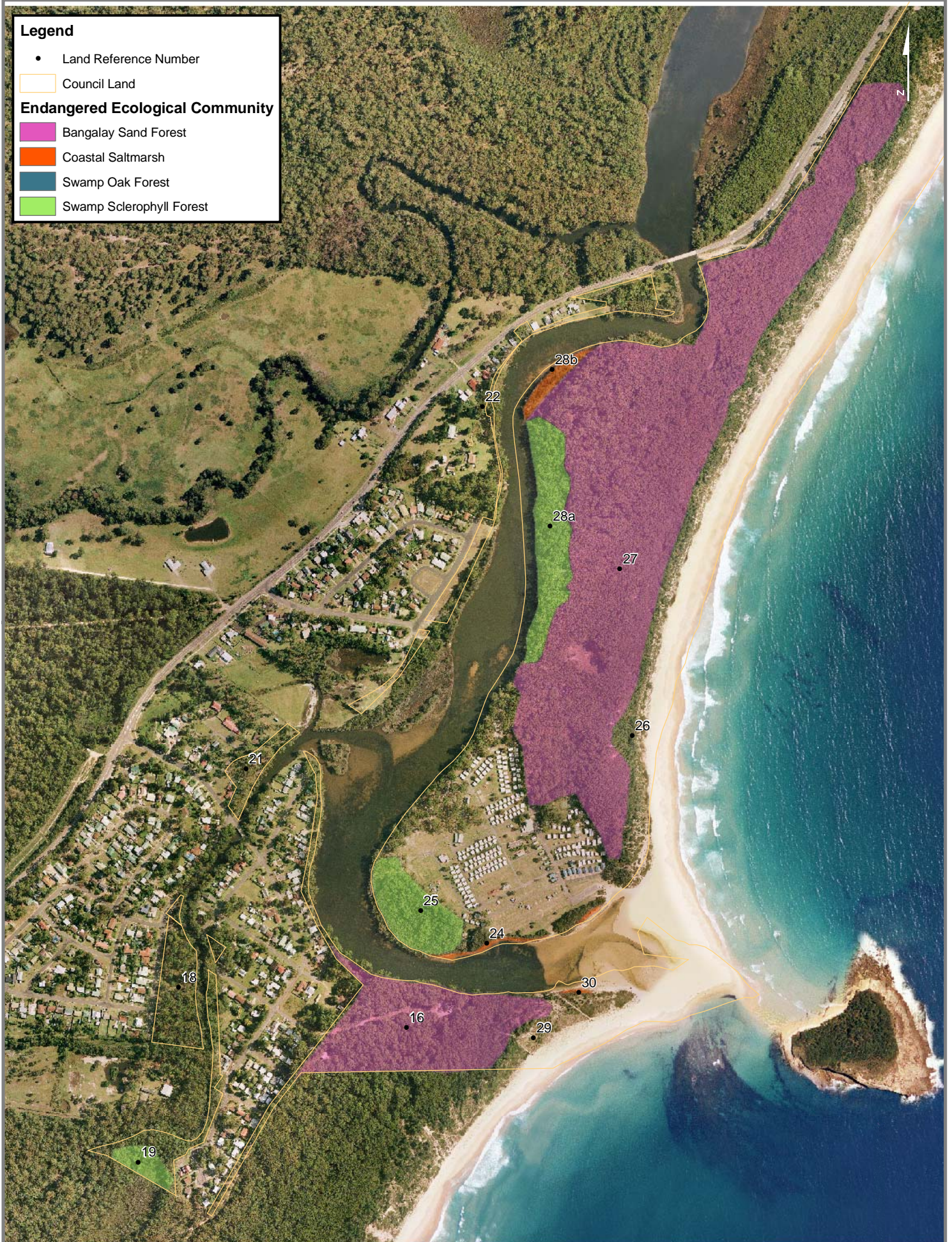


**Legend**

- Land Reference Number
- Council Land
- Endangered Ecological Community**
- Bangalay Sand Forest
- Coastal Saltmarsh
- Swamp Oak Forest
- Swamp Sclerophyll Forest



C:\GIS\AHA Ecology\2507 EEC Mapping Shoalhaven Jan 7, 2008

Figure 7

EEC Mapping of Council Lands  
Tabourie Lake



LAKE TABOURIE				
Land Number	Vegetation Community	Description	Broad Condition / Value	Threat
TL-27	<b>Bangalay Sand Forest - EEC</b>	This vegetation community extends throughout much of the NE between Tabourie Creek and the ocean. Dominant canopy species are Bangalay, Old-man Banksia and Sweet Pittosporum with Lomandra, Tree Broom-heath, Snake Vine in the understorey.	<b>Good condition.</b> Large relatively intact forest although with numerous access tracks throughout.	Tracks and Trampling.
TL-28a,25	<b>Swamp Sclerophyll Forest - EEC</b>	Area bordering Tabourie Creek adjacent to the Bangalay Forest and at the southern end of the caravan park are dominated by Bangalay and Swamp oak with a dense cover of Snake Vine and Tall Saw -sedge in the understorey.	<b>Fair condition.</b> Edge effects apparent especially in the areas adjacent to the caravan park.	Weed invasion along edges.
TL-28b,24,30	<b>Coastal Saltmarsh - EEC</b>	This community occurs in a small section in the NW and also along the southern boundary of the northern Council reserve. Dominated by Sea Rush and Baumea juncea grading into Swamp Oak.	<b>Fair condition.</b> High traffic areas around the caravan park are more degraded.	Trampling.
TL-26	Coastal Scrub	Occurs on the seaward side of the frontal dune. Comprises Coast Banksia, Coastal Rosemary and Lomandra.	<b>Fair condition.</b> Relatively intact and provides protection to the frontal dune.	Weed invasion along edges.
TL-16	<b>Bangalay Sand Forest - EEC</b>	Extensive stand S of the inlet. Dominated by Bangalay, Blackbutt and Coast Banksia with Coastal Wattle and Lomandra dominating the understorey. Quite open in sections. <b>Endangered species, Tangled Bedstraw (Galium australe) recorded on this land.</b>	<b>Good condition.</b> Relatively intact and provides good dune protection and fauna habitat.	Edge effects of urbanisation.
TL-19	<b>Swamp Sclerophyll Forest - EEC</b>	Dense stand dominated by Bangalay, Black She-oak, Gahnia, Common Bracken, Dusky Coral Pea and Dianella with Blackbutt and Tick Bush on the edges.	<b>Fair condition.</b> Impacts evident from adjacent urbanisation.	Urbanisation.
TL-29	Coastal Scrub	Occurs on the seaward side of the frontal dune. Comprises Coast Banksia, Coastal Rosemary and Lomandra.	<b>Fair condition.</b> Relatively intact and provides protection to the frontal dune.	Tracks
TL-18,21,22	Modified	Narrow strips and grassed area spreading northwards along the western side of Tabourie Creek.	<b>Very poor condition.</b> Narrow strip with absent understorey.	Further degradation through urbanisation.
TL-30	<b>Coastal Saltmarsh - EEC</b>	Located on the south side of the inlet. Dominated by Sea Rush, Isolepis unundates, Swamp Oak, Hydrocotyle bonariensis.	<b>Fair condition.</b> Relatively intact.	Trampling as it is a popular recreation area.