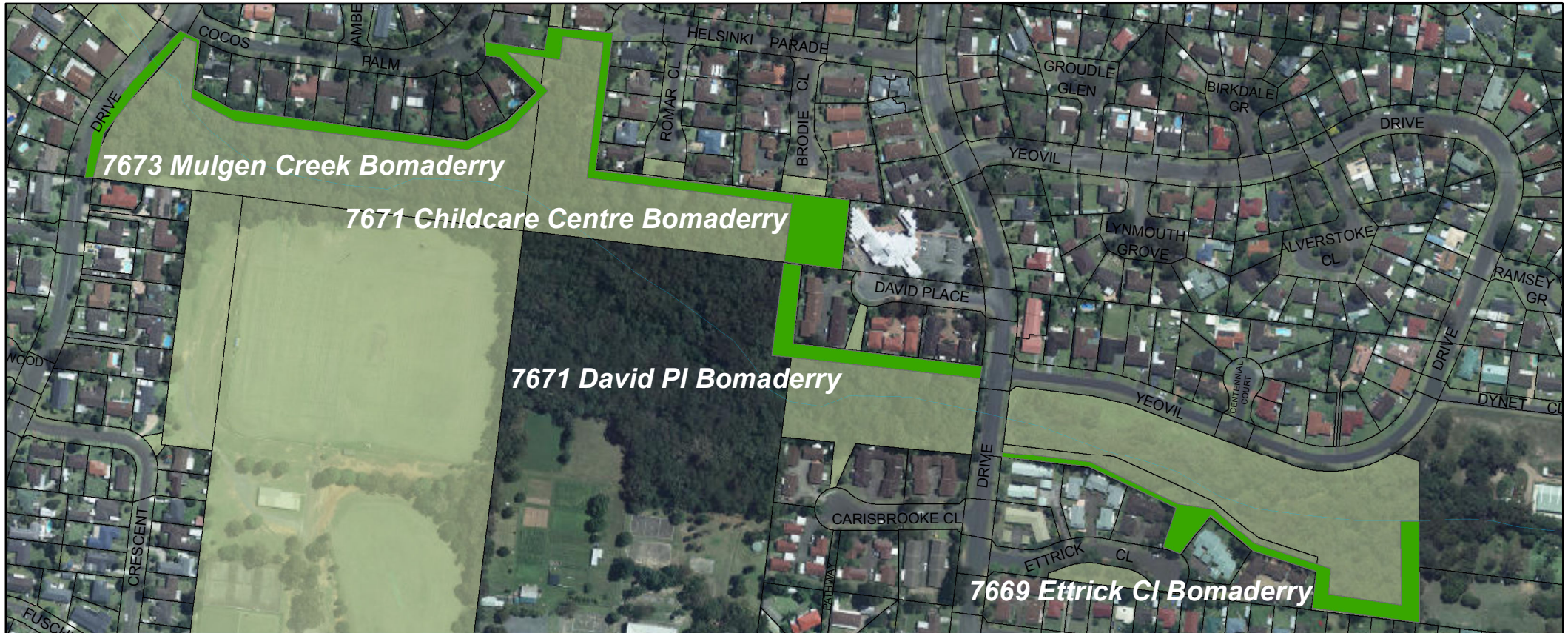


# BOMADERRY - Mulgen Creek



## Maintenance Instructions

7673: Generally, slash/mow 6-10m (variable) along the northern boundary of the Reserve.

7671: This is a special area that is mown/slashed 20m off the rear of the Child Care Centre. Another section of this APZ crosses the Dept of Education land at the rear of David PI then along the boundary with properties in David Place.

7669: A narrow strip is maintained along the Reserve boundary on the southern side of Mulgen Creek; the APZ then widens out at the eastern section of the Reserve.

## Risk Level - BFRMP

