

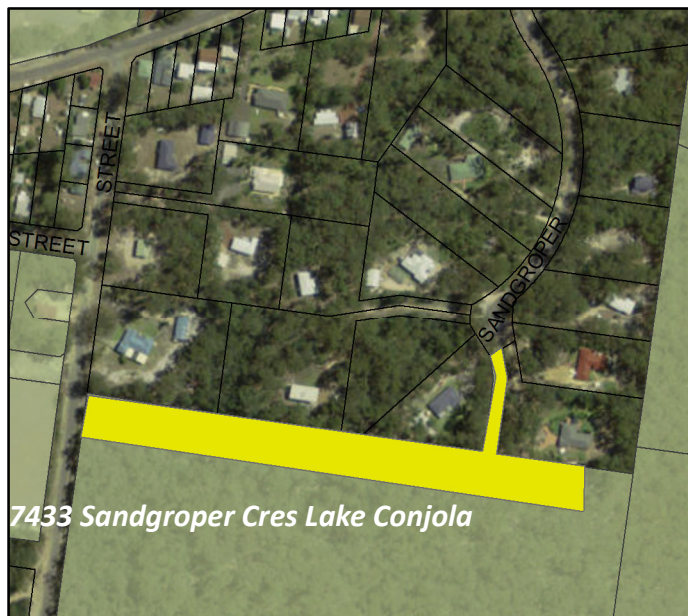
LAKE CONJOLA & CONJOLA PARK

Maintenance Instructions

7436: Inspect & Maintain all road verges on the bushland side of Sandra, Havilland & Stewart Sts.

7434: Inspect & Maintain a 10m wide break at the rear of properties from 19 Conley Ave to beside 37 Aney St.

7433: Slash 20m off private property boundaries from Thorne St entrance to beside 17 Sandgroper Cres including the access way to Sandgroper Cres.



Risk Level - BFRMP

- Very High
- High
- Medium
- Low
- Not included in BFRMP
- Not Assessed in BFRMP
- Council Managed Properties
- Waterways
- Cadastre

N



Date: 17/06/2014

