



## HOWELL FAULKS PARK PARKCARE ACTION PLAN

**Document Number:** D14/80608 • **Adopted:** 14/10/2014 • **Minute Number:** D14/268911  
• **File:** 37850E • **Produced By:** Assets and Works Group • **Review Date:** 14/10/2017

### CONTACT INFORMATION

<b>Group Name:</b>	Howell Faulks Park Parkcare Group
<b>Contact:</b>	Donna Jones
<b>Address:</b>	44 Tannery Road
<b>Telephone:</b>	44460919
<b>Email:</b>	scottdonnajones@bigpond.com
<b>Reserve Name:</b>	Howell Faulks Park
<b>Reserve Number:</b>	NCA045
<b>Land Tenure:</b> SCC	<b>Comm. Land Type:</b> Community Park

### 1. PARKCARE GROUP GOALS

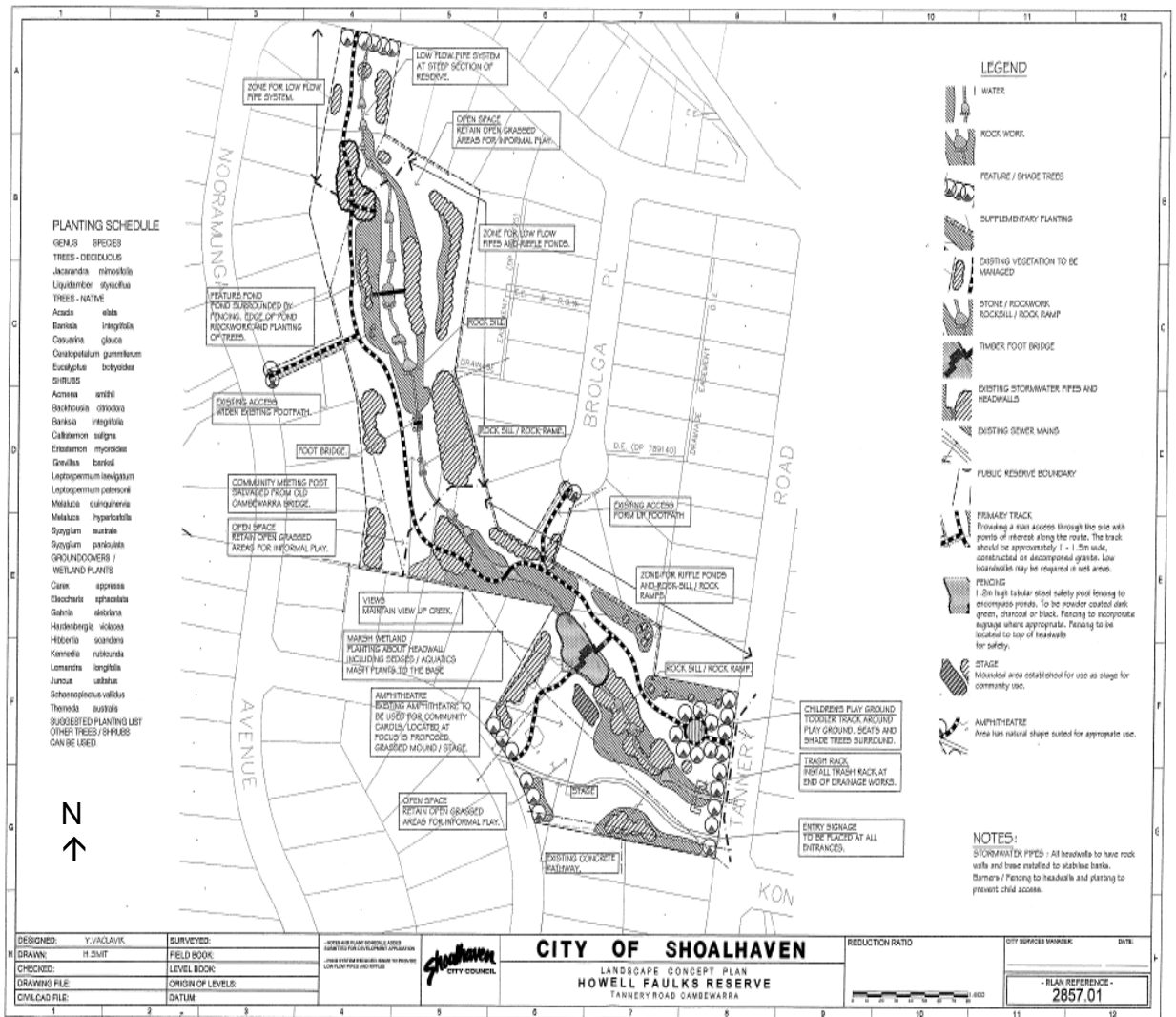
To enhance Howell Faulks Park by adding infrastructure, maintaining and planting garden beds and trees. Cleaning infrastructure

**2. SHOALHAVEN PARKCARE GROUP ACTIVITIES TABLE (to be in conjunction with attached site map)**

**NOTE: Priority should be rated as H = High (within 12 months); M = Medium (1-3 years); L = Low**

<b>GROUP ACTION</b>	<b>PRIORITY</b>	<b>METHOD</b>	<b>TIME</b>
Construct pathways through reserve, install seating and clear drainage swales as per landscape plan	H	Hand Tools & Contractor Machinery	1-3 yrs
Mulch garden beds, replace dead trees	M	Hand tools	1-3yrs
Paint infrastructure, clean BBQ	M	Hand tools	Ongoing

### 3. PARKCARE GROUP ACTION PLAN MAP



#### 4. PARKCARE GROUP WHS & EQUIPMENT REQUIREMENTS

Type of Activity	SWMS name included
Landscape Construction & Maintenance	SWMS1200
Park Furnishings & Play Equipment Maintenance	SWMS1201
Walking Track & Fence Construction & Maintenance	SWMS1205
Operating Whipper Snipper	SWMS1286
Roadside & Park Litter Collection	SWMS1172
Operate & Maintain Ride On Mower / Tractor	SWMS1133

#### 5. COUNCIL SUPPORT

- Provision of building materials and paints as budget permits.
- Provision of landscape materials including plants and mulch as budget permits.
- Disposal of waste costs as necessary

#### 6. HAS A SITE HAZARD AND RISK ASSESSMENT BEEN COMPLETED FOR THE PARKCARE SITE?

Yes

#### 7. LIST THE PERSONAL PROTECTION EQUIPMENT REQUIRED FOR VOLUNTEERS WHILST WORKING ON THE SITE

PPE Equipment Required	Date issued
Gloves	As required
Sunscreen	As required
Insect repellent	As required

## 8. POSSIBLE FUTURE FUNDING

<b>Project</b>	<b>Funding source</b>
Continue the construction of the concrete pathway up to Nooramunga Drive	Grants, Parkcare & Passive Recreation Budgets

## 9. PLAN WILL BE REVIEWED EVERY THREE YEARS

## 10. PLEASE LIST OTHER LOCAL OR REGIONAL MANAGEMENT PLANS OR STRATEGIES THAT THIS PLAN RELATES TO

<b>Name of document</b>	<b>Year it was produced</b>	<b>Produced by</b>
Generis Plans Of Management - Parks	2001	SCC
Generic Plans Of Management – Natural Areas	2001	SCC
Howell Faulks Reserve Landscape Concept Plan	2007	SCC

## 11. RECOMMENDED PLANTING/REVEGETATION SPECIES LIST

<b>OVERSTOREY TREES</b>	
<b>Botanical</b>	<b>Common</b>
Acacia elata	Cedar Wattle
Banksia integrifolia	Coast Banksia
Casuarina glauca	Swamp Oak
Ceratopetalum gummiferum	Christmas Bush
Eucalyptus botryoides	Bangalay
Jacaranda mimosifolia	Jacaranda
Liquidambar styraciflua	Liquidambar
Tristaniopsis laurina	Watergum
<b>SHRUBS</b>	
<b>Botanical</b>	<b>Common</b>
Acmena smithii	Lillypilly
Backhousia citriodora	Lemon Myrtle
Callistemon saligna	Willow Bottlebrush
Eriostemon myoporoides	Boobiella
Grevillea banksii	Red Silky Oak
Leptospermum laevigatum	Coastal Tea Tree
Leptospermum petersonii	Lemon Scented Tea Tree
Melaleuca hypericifolia	Hillock Bush
Melaleuca quinquinervia	Broad Leaf Paperbark
Syzygium australe	Scrub Cherry
Syzygium paniculatum	Magenta Cherry
<b>UNDERSTOREY (grasses, herbs, climbers)</b>	
<b>Botanical</b>	<b>Common</b>
Carex appressa	Tall Sedge
Eleocharis sphacelata	Spike Rush
Gahnia sieberiana	Saw-Sedge
Hardenbergia violacea	Native Sarsaparilla
Hibbertia scandens	Snake Vine
Juncus usitatus	Common Rush
Kennedia rubicunda	Dusky Coral Pea
Lomandra longifolia	Mat Rush
Schoenoplectus validus	River Club Rush
Themeda australis	Kangaroo Grass

**Parkcare Group Name:**.....

**Coordinator Name:**.....

**Signature:** .....

**Date:** ...../...../.....