



BARFLEUR BEACH, PLANTATION POINT & STUART KING RESERVE BUSHCARE ACTION PLAN – REVIEW 2015

Document Number: D15/259829 • **Adopted:** 24/5/2016 • **Minute Number:** 16.388 •
File: 26280E • **Produced By:** Planning & Development Services Group • **Review**
Date: 24/5/2019

CONTACT INFORMATION

Group Name:	Vincentia Bushcare
Contact:	Barbara Liddle
Address:	
Telephone:	
Email:	
Reserve Name:	Barfleure Beach, Plantation Point, Stuart King Reserve and Blenheim Beach
Reserve Number:	BVI507, BVI623, BVI503 & BVI615
Land Tenure:	SCC, Crown TM & NSW Dept of Planning
Comm. Land Type:	Natural Area

1. BUSHCARE GROUP GOALS

<p>This Bushcare group plan covers the foreshore reserves known as Barfleure Beach, Plantation Point, Nelson Beach, Stuart King Reserve and Blenheim Beach. The main goal of the Bushcare Group Action Plan is to maintain and improve biodiversity of these reserves whilst raising public awareness of their ecological values. The main issues that this Bushcare plan aims to address are as follows:</p> <ol style="list-style-type: none">1. Maintain and improve a healthy native vegetation buffer along the foreshore of all foreshore reserves.2. Educate & Raise awareness in the local community of the important role and value of a healthy foreshore vegetation buffer for both biodiversity and protection of assets from coastal erosion.3. Control pest animals and plants to improve the health and biodiversity of the foreshore reserves.
--

2. **BUSHCARE GROUP ACHEIVEMENTS TO DATE – (What successes has your Bushcare Group achieved in relation to your achieving the goals and actions in your current Bushcare Group Action Plan and what lessons or new skills/knowledge have you learnt from these achievements?)**

Successes/Goals/Actions achieved to date	Lessons learnt
<p>Area 1 - Barfleur Beach – Plantation Point Reserve Bushcare Group successes to date are as follows:</p> <ol style="list-style-type: none"> 1. Design, production and installation of 4 interpretive signs aimed at raising awareness of Jervis Bay’s biodiversity and environmental values. 2. Regeneration and weed control of 37,785 square metres of natural area foreshore reserves. 3. Assisting with landscaping/planting off the shared pathway around Barfleur Beach, Plantation Point and Nelson Beach. 	<p>Area 1 - Barfleur Beach – Plantation Point Reserve The Bushcare Group learnt the value of secondary/follow up weed control and coordinating weed control works with other agencies at this site. They have also assisted Council’s Landscape Architect with some soft landscaping around the constructed shared pathway.</p>
<p>Area 2 - Stuart King Reserve & Blenheim Beach Bushcare Group successes to date are as follows:</p> <ol style="list-style-type: none"> 1. Regeneration and weed control of 148,978 square metres of natural area foreshore reserves. 2. Maintenance of 2 kilometres of White Sands Walking Track. 	<p>Area 2 - Stuart King Reserve & Blenheim Beach The Bushcare Group have had some difficulties with dumping of garden waste at the back of Stuart King Reserve and have tried some face to face awareness raising exercises - which has been found to be somewhat successful .</p>

3. **SHOALHAVEN BUSHCARE GROUP ACTIVITIES TABLE (to be in conjunction with attached site map)**
NOTE: Priority should be rated as H = High (within 12 months); M = Medium (1-3 years); L = Low

GROUP ACTION (these should relate to your project description)	PRIORITY	METHOD	TIME
<p>Area 1 - Barfleur Beach – Plantation Point Reserve</p> <p>CURRENT AND EXISTING ACTIONS</p> <ol style="list-style-type: none"> 1. Manage, maintain and restore existing perimeter remnant vegetation buffer by undertaking pest plant and animal control in cooperation with Shoalhaven Council, Crown Lands, NSW Local Land Services and surrounding landholders (as per action A1.8 of the Plantation Point Plan of Management – Landscape Plan 2012. 2. Protect and reinforce dune vegetation to help protect the dune from erosion as per action A 1.9 of the Plantation Point Plan of Management – Landscape Plan 2012. 3. On-going secondary control of noxious and environmental weeds across the area targeting the following weed species: <ol style="list-style-type: none"> a. <i>Bryophyllum</i> species(Mother of Millions) b. <i>Asparagus aethiopicus</i> (Asparagus Fern) c. <i>Senna pendula ssp. pendula</i> (Cassia) d. <i>Crocosmia x crocosmiiflora</i> (Montbretia) 	<ol style="list-style-type: none"> 1. H 2. H 3. H 	<ol style="list-style-type: none"> 1. Work with Council NSW LLS to undertake shooting program of rabbits on the reserve 2. Weed control and planting as required 3. Combination of manual and chemical control as per best practise control techniques for each weed species 	<ol style="list-style-type: none"> 1. As needed 2. As needed 3. As needed

GROUP ACTION (these should relate to your project description)	PRIORITY	METHOD	TIME
<ul style="list-style-type: none"> e. <i>Stenotaphrum secundatum</i> (Buffalo Grass) f. <i>Ehrharta erecta</i> (Panic Veldt Grass) g. <i>Chrysanthemoides monilifera</i> (Bitou Bush) h. <i>Lilium formosanum</i> (Formosan Lily) i. <i>Yucca aloifolia</i> (Dagger Plant) j. <i>Other garden escapee weeds as required</i> <p>4. Undertake supplementary planting as required using species from the suggested revegetation list in section 12.</p>	4. M	4. Seed collection, propagation of local species to plant out as required	4. As needed
<p>NEW ACTIONS</p> <ul style="list-style-type: none"> 1. Seek assistance from Shoalhaven Council in reinstating the pre-existing perimeter fencing that used to act as a physical barrier between the open maintained sections of the reserve and surrounding buffer remnant vegetation. 2. Undertake weed control on the boundary of the fenced off area to prevent weed encroachment on the cliff top areas at Nelson beach. 3. Replacement and supplementary planting in fenced off areas at Nelson Beach using plant species that have a mature height of no more than 1 metre. 4. As per the Plantation Point Landscape Master Plan, mulch isolated Bangalay Gum trees in area 2 of Plantation Point Reserve and plant out area to link up isolated trees and improve the trees health. 	<p>1. M</p> <p>2. M</p> <p>3. L</p>	<p>NEW ACTIONS</p> <ul style="list-style-type: none"> 1. Seek funding assistance from Council for materials and seek support for Work for the Dole or similar labour market program to construct the fence 2. Spray encroaching weeds with 1/200 dilution rate of Glyphosate 3. Replacement planting as required 4. Spray, mulch and plant with understory plant species 	<p>1. 2016</p> <p>2. On-going</p> <p>3. As needed</p> <p>4. 2016-17</p>

GROUP ACTION (these should relate to your project description)	PRIORITY	METHOD	TIME
<p>Area 2 - Stuart King Reserve & Blenheim Beach</p> <p>CURRENT AND EXISTING ACTIONS</p> <ol style="list-style-type: none"> 1. On-going secondary control of noxious and environmental weeds across the area targeting the following weed species: <ol style="list-style-type: none"> a. <i>Lonicera japonica</i> (Japanese Honeysuckle) b. <i>Asparagus aethiopicus</i> (Asparagus Fern) c. <i>Crocasmia x crocosmiiflora</i> (Montbretia) d. <i>Stenotaphrum secundatum</i> (Buffalo Grass) e. <i>Andropogon virginicus</i> – <i>Whisky Grass</i> f. <i>Eragrostis curvula</i> (<i>African Love Grass</i>) g. <i>Sporobolus africanus</i> – (<i>Parramatta Grass</i>) h. <i>Paspalum dilatatum</i> - (<i>Paspalum Grass</i>) i. <i>Senna pendula spp pendula</i> (<i>Cassia</i>) j. <i>Lilium formosanum</i> (<i>Formosan Lily</i>) k. <i>Sollya heterophylla</i> (<i>Western Australia Blue Bell Creeper</i>) l. Garden escapee weeds as required 2. Undertake supplementary planting as required using species from this plans suggested revegetation list in section 12. 3. Assist Council with on-going pruning of overhanging vegetation along the White Sands Walk to improve public safety. 	<ol style="list-style-type: none"> 1. H 2. M 3. M 	<ol style="list-style-type: none"> 1. Combination of manual and chemical control as per best practise control techniques for each weed species 2. Planting as required 3. Only prune back to track edge to reduce risk to the public (only use hand held saw any 	<ol style="list-style-type: none"> 1. As needed 2. As needed 3. As needed

GROUP ACTION (these should relate to your project description)	PRIORITY	METHOD	TIME
<p>NEW ACTIONS</p> <ol style="list-style-type: none"> 1. Close down informal walking track access points from Elizabeth Drive to Blenheim Beach in cooperation with NSW Department of Planning and Environment as per map 4b) in this plan 2. Work with Council Asset and Works Division to close vehicle access to Captain St road to prevent on-going dumping of rubbish and illegal camping (see map 4b and appendix 1 of this plan) 3. Work with Shoalhaven Council reinstate fencing at the Western end of the reserve on the boundary of the bush and Asset Protection Zone (see map in appendix 8) 4. Council to write to residents backing onto the Stuart King Reserve to inform them that the removal/cutting of vegetation to create private access tracks is illegal 5. Shoalhaven Council to install reserve signage on the access track from APZ to White Sand Walk at the rear of 232 Elizabeth Drive 	<p>1. M</p> <p>2. H</p> <p>3. L</p> <p>4. M</p>	<p>larger fallen trees or debris is to be done by Council staff)</p> <p>NEW ACTIONS</p> <ol style="list-style-type: none"> 1. Install fencing and lay fallen debris across closed tracks and install signage 2. Work with Council to have a lockable steel gate installed at the entrance to Captains St off Elizabeth Drive 3. Council to fund fence construction and Bushcare Group to maintain 4. Shoalhaven Bushcare Coordinator to organise 	<p>1. 2016/17</p> <p>2. 2016/17</p> <p>3. 2018</p> <p>4. 2016</p> <p>5. 2016</p>

4. VINCENTIA BUSHCARE GROUP ACTION PLAN MAP – AREA 1 BARFLEUR BEACH, PLANTATION PT & NELSON BEACH



4a) BUSHCARE GROUP ACTION PLAN MAP – AREA 2 - STUART KING RESERVE & BLENHEIM BEACH

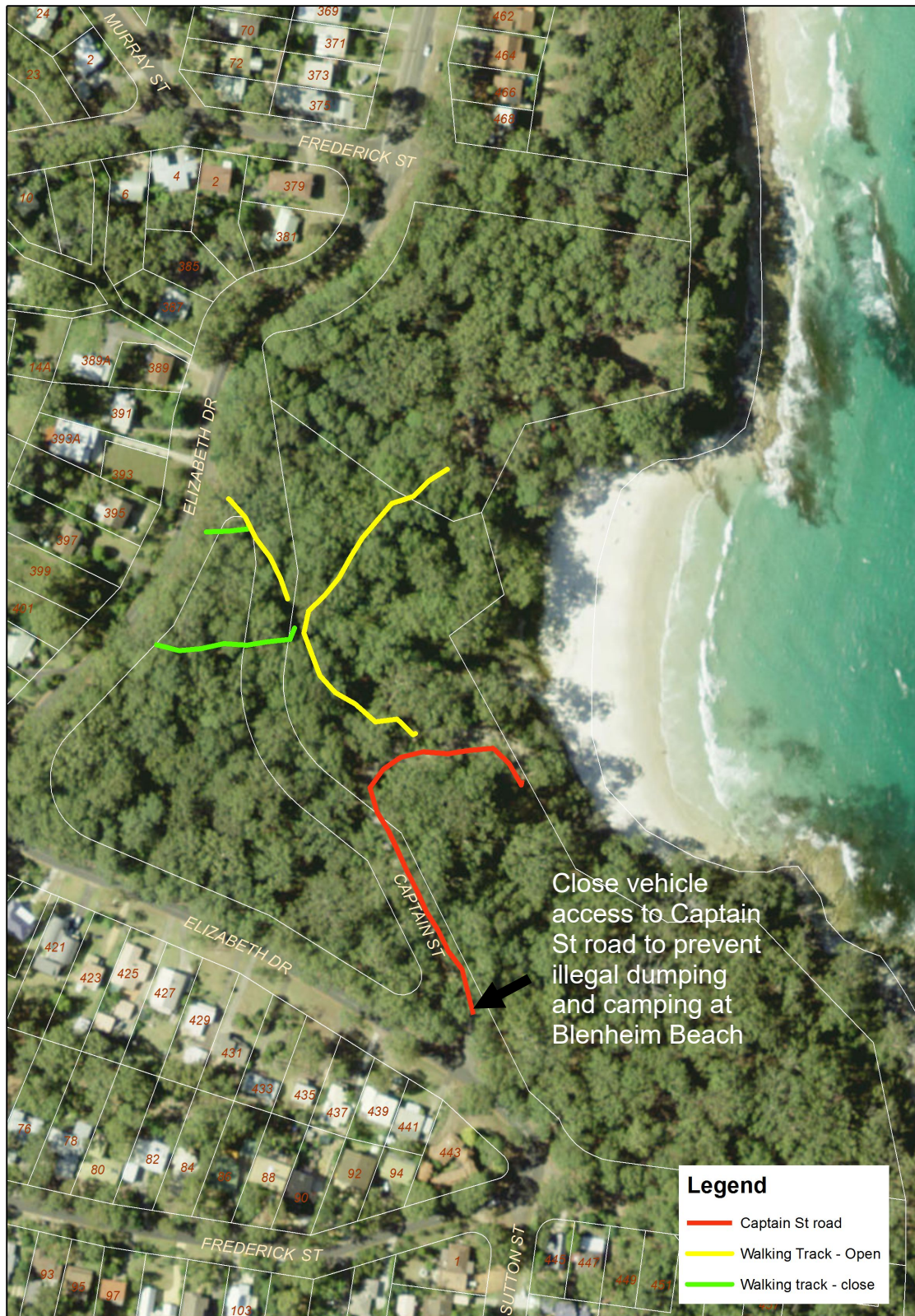


0 220 440 880 1,320 m

Map Printed : Friday, September 18, 2015

Vincnetia Bushcare Site - Stuart King Reserve & Blenheim I

4b) BLENHIEM BEACH TRACK AND ROAD CONSOLIDATION MAP



5. BUSHCARE GROUP WHS & EQUIPMENT REQUIREMENTS

Type of Activity	Yes	SWMS name included
Manual weed control (cut & paint, scrape and paint etc.)	√	SWMS1276
Chemical control (spraying of herbicides)	√	SWMS1276
Planting	√	SWMS1265
Minor construction (walking track, fencing, outdoor furniture)	√	SWMS1200
Propagation & seed collection	√	SWMS1265
Education (school groups, field days etc.)	NA	
Other		

6. COUNCIL SUPPORT

Shoalhaven Council will provide the following support:

- Technical advice and training;
- Tools and equipment;
- Grant application and management support;
- Printing;
- One Bushcare Support Trainer to assist the group on site for 3 hours per month;
- Plants; and
- Herbicides.

7. HAS A SITE HAZARD AND RISK ASSESSMENT BEEN COMPLETED FOR THE BUSHCARE SITE?

Yes No

8. LIST THE PERSONAL PROTECTION EQUIPMENT REQUIRED FOR VOLUNTEERS WHILST WORKING ON THE SITE

PPE Equipment Required	Date issued
First Aid Kit	2015
Gloves	2015
Sunscreen	2015
Insect repellent	2015

9. POSSIBLE FUTURE FUNDING

Project	Funding source
Pest plant and animal control and construction of perimeter fence at Plantation Point Reserve	SCC & Various

10. PLAN WILL BE REVIEWED EVERY THREE YEARS

Next review due:

.....24...../.....May.../...2019.....

11. PLEASE LIST OTHER LOCAL OR REGIONAL MANAGEMENT PLANS OR STRATEGIES THAT THIS PLAN RELATES TO

Name of document	Year it was produced	Produced by
Jervis Bay Regional Environment Plan	1996	NSW Planning
Foreshore Reserve Policy	2013	Shoalhaven City Council
Generic Community Land Plan of Management - Natural Areas	2001	Shoalhaven City Council 1996

12. BUSHCARE SITE RECOMMENDED PLANTING/REVEGETATION SPECIES LIST

*These species will not be planted in areas on the reserve where there is an existing ocean view

OVERSTOREY TREES	
Botanical	Common
<i>Angophora floribunda</i>	Rough Barked Apple
<i>Banksia integrifolia</i> *	Coastal Banksia
<i>Casuarina glauca</i> *	Swamp Oak
<i>Corymbia gummifera</i> *	Red Bloodwood
<i>Corymbia maculata</i> *	Spotted Gum
<i>Eucalyptus botryoides</i> *	Bangalay Gum
<i>Eucalyptus pilularis</i> *	Blackbutt
<i>Eucalyptus racemosa</i> *	Snappy Gum
<i>Leptospermum laevigatum</i> *	Coastal Tea Tree

SHRUBS	
Botanical	Common
<i>Acacia longifolia</i> ssp. <i>longifolia</i>	Sydney Golden Wattle
<i>Acacia longifolia</i> ssp. <i>sophorae</i>	Coastal Wattle
<i>Banksia spinulosa</i>	Hairpin Banksia
<i>Correa alba</i>	White Correa
<i>Dillwynia retorta</i>	
<i>Elaeocarpus reticulatus</i>	Blueberry Ash
<i>Grevillea macleayana</i>	Jervis Bay Grevillea
<i>Lambertia formosa</i>	Mountain Devil
<i>Melaleuca hypericifolia</i>	Hillock Bush
<i>Myoporum boninense</i>	Boobiolla
<i>Pultenaea daphnoides</i>	Large Leaf Bush Pea
<i>Rhagodia candolleana</i>	Sea Berry
<i>Westringia fruticosa</i>	Coastal Rosemary
UNDERSTOREY (grasses, herbs, climbers)	
Botanical	Common
<i>Carpobrotus glaucescens</i>	Pigface
<i>Crocea saligna</i>	Crocea
<i>Dianella caerulea</i> var. <i>caerulea</i>	Blue Flax Lily
<i>Dianella caerulea</i> var. <i>protensa</i>	Flax Lily
<i>Dianella congesta</i>	Coastal Flax Lily
<i>Gahnia clarkei</i>	Sword Sedge
<i>Gahnia melanocarpa</i>	Sword Sedge
<i>Gahnia sieberiana</i>	Sword Sedge
<i>Hardenbergia violacea</i>	Purple Coral Pea
<i>Hibbertia aspera</i> subsp. <i>aspera</i>	Guinea Flower
<i>Hibbertia dentata</i>	Trailing Guinea Flower
<i>Hibbertia scandens</i>	Guinea Flower
<i>Kennedia rubicunda</i>	Dusky Coral Pea
<i>Lomandra longifolia</i>	Spiny Matt Rush
<i>Lomandra filiformis</i>	Matt Rush
<i>Lomatia ilicifolia</i>	Native Holly
<i>Poa labillardieri</i>	Tussock
<i>Spinifex sericeus</i>	Hairy Spinifex
<i>Sporobolus virginicus</i>	Sand Couch
<i>Tetragonia tetragonioides</i>	Warrigal Greens
<i>Themeda australis</i>	Kangaroo Grass

13. BUSHCARE SITE WEED LIST (The following weeds have been recorded on the site)

Noxious	Environmental	Control Method
<i>Eragrostis curvula</i> (African Love Grass) <i>Class 4</i> <i>Noxious Weed</i>		Manual or chemical control

<i>Chrysanthemoides monilifera</i> (Bitou Bush) Class 4 Noxious Weed		Manual or chemical control
	<i>Andropogon virginicus</i> (Whisky Grass)	Manual or chemical control
	<i>Bryophyllum delagoense</i> (Mother of Millions)	Had pull plants and remove from site
	<i>Lilium formosanum</i> (Formosan Lily)	Cut and drip neat Glyphosate on stem
	<i>Pennisetum clandestinum</i> (Kikuyu Grass)	Manual or chemical control using 1:200 rate of glyphosate:water – spray in cooler months
	<i>Senna pendula</i> (Cassia)	Cut and paint with 1/3 Glyphosate
	<i>Stenotaphrum secundatum</i> (Buffalo Grass)	Manual or chemical control using 1:200 rate of glyphosate:water – spray in cooler months
	<i>Tradescantia fluminensis</i> (Wandering Jew)	Need to manually remove and bag all vegetative matter

14. BARFLEUR BEACH & PLANTATION POINT BUSHCARE SITE SPECIES LIST (The following species have been recorded on the site, these species lists were collated using a 50 metres vegetation transect for location details of these transects see appendix)

OVERSTOREY TREES	
Botanical	Common
<i>Angophora floribunda</i>	Rough Barked Apple
<i>Banksia integrifolia</i>	Coastal Banksia
<i>Casuarina glauca</i>	Swamp Oak
<i>Corymbia gummifera</i>	Red Bloodwood
<i>Corymbia maculata</i>	Spotted Gum
<i>Eucalyptus botryoides</i>	Bangalay Gum
<i>Eucalyptus racemosa</i>	Snappy Gum
<i>Leptospermum laevigatum</i>	Coast Teatree
SHRUBS	
Botanical	Common
<i>Acacia longifolia ssp. longifolia</i>	Sydney Golden Wattle
<i>Acacia longifolia ssp. sophorae</i>	Coastal Wattle
<i>Elaeocarpus reticulatus</i>	Blueberry Ash
<i>Leucopogon parviflorus</i>	Coastal Beard-heath

<i>Myoporum acuminatum</i>	Mangrove Boobialla
<i>Myoporum boninense</i>	Boobialla
<i>Notelaea longifolia</i>	Large Mock-olive
<i>Pittosporum undulatum</i>	Native Daphne
<i>Rhagodia candolleana</i>	Sea Berry
<i>Westringia fruticosa</i>	Coastal Rosemary
UNDERSTOREY (grasses, herbs, orchids)	
Botanical	Common
<i>Ammophila arenaria*</i>	Marram Grass
<i>Cakile maritima</i>	Sea Rocket
<i>Carpobrotus glaucescens</i>	Pigface
<i>Centella asiatica</i>	Indian Pennywort
<i>Crowea saligna</i>	Crowea
<i>Dianella caerulea var. caerulea</i>	Blue Fax Lily
<i>Dichondra repens</i>	Kidney Weed
<i>Ficinia nodosa</i>	Knobby Club-Rush
<i>Geranium homeanum</i>	
<i>Geranium solanderi var. solanderi</i>	Australian Cransbill
<i>Lomandra longifolia</i>	Spiny Matt Rush
<i>Pelargonium australe</i>	Native Storksbill
<i>Plectranthus parviflorus</i>	Cockspur Flower
<i>Pteridium esculentum</i>	Bracken Fern
<i>Pultenaea daphnoides</i>	Large-leaf Bush Pea
<i>Senecio linearifolius</i>	Fireweed Groundsel
<i>Spinifex sericeus</i>	Hairy Spinifex
<i>Sporobolus virginicus</i>	Sand Couch
<i>Tetragonia tetragonioides</i>	Warrigal Greens
<i>Themeda australis</i>	Kangaroo Grass
UNDERSTOREY (vines & climbers)	
Botanical	Common
<i>Billardiera scandens</i>	Hairy Apple Berry
<i>Clematis aristata</i>	Old Man's Beard
<i>Eustrephus latifolius</i>	Wombat Berry
<i>Glycine microphylla</i>	Small Leaf Love Creeper
<i>Glycine tabacina</i>	Love Creeper
<i>Hardenbergia violacea</i>	Purple Coral Pea
<i>Hibbertia dentata</i>	Trailing Guinea Flower
<i>Kennedia rubicunda</i>	Dusky Coral Pea
<i>Parsonsia straminea</i>	Common Silkpod Vine
<i>Smilax glycyphylla</i>	Sweet Sarsaparilla

15. STUART KING RESERVE BUSHCARE SITE SPECIES LIST (The following species have been recorded on the site, these species lists were collated using a 50 metres vegetation transect for location details of these transects see appendix)

OVERSTOREY TREES	
Botanical	Common
<i>Banksia integrifolia</i>	Coastal Banksia
<i>Corymbia gummifera</i>	Red Bloodwood
<i>Eucalyptus agglomerata</i>	Blue Leaf Stringybark
<i>Eucalyptus sclerophylla</i>	Scribbly Gum
SHRUBS	
Botanical	Common
<i>Acacia binervata</i>	Two Veined Hickory
<i>Acacia longifolia ssp. longifolia</i>	Sydney Golden Wattle
<i>Acacia suaveolens</i>	Sweet Wattle
<i>Allocasuarina littoralis</i>	Black She Oak
<i>Asplenium flabellifolium</i>	Necklace Fern
<i>Banksia serrata</i>	Saw Tooth Banksia
<i>Banksia spinulosa</i>	Hairpin Banksia
<i>Homalanthus populifolius</i>	Bleeding Heart
UNDERSTOREY (grasses, herbs, orchids)	
Botanical	Common
<i>Adiantum aethiopicum</i>	Common Maidenhair Fern
<i>Carex appressa</i>	Tall Sedge
<i>Caustis flexuosa</i>	Curly Wire Grass
<i>Daviesia ulicifolia</i>	Gorse Bitter Pea
<i>Dianella caerulea var. caerulea</i>	Blue Flax Lily
<i>Dianella caerulea var. protensa</i>	Flax Lily
<i>Dianella congesta</i>	Coastal Flax Lily
<i>Dillwynia retorta</i>	
<i>Eleocharis reticulatus</i>	Blueberry Ash
<i>Gahnia clarkei</i>	Sword Sedge
<i>Grevillea macleayana</i>	Jervis Bay Grevillea
<i>Hakea salicifolia</i>	Willow Leaf Hakea
<i>Hibbertia aspera sub.aspera</i>	Guinea Flower
<i>Lambertia formosa</i>	Mountain Devil
<i>Leptospermum laevigatum</i>	Coast Teatree
<i>Leptospermum polyanthum</i>	Slender Teatree
<i>Leucopogon juniperinus</i>	Prickly Bearded Heath
<i>Leucopogon lanceolatus</i>	
<i>Leucopogon parviflorus</i>	Coastal Beard-heath
<i>Lindsaea microphylla</i>	Lacy Wedge-Fern
<i>Lomandra longifolia</i>	Spiny Matt Rush
<i>Lomandra filiformis ssp. coriacea</i>	
<i>Lomatia ilicifolia</i>	Native Holly
<i>Lomatia myricoides</i>	Mountain Beech

<i>Microlaena stipoides</i>	Weeping Grass
<i>Melaleuca hypericifolia</i>	Hillock Bush
<i>Pittosporum undulatum</i>	Native Daphne
<i>Poa labillardieri</i>	Tussock
<i>Pratia purpurascens</i>	Whiteroot
<i>Pteridium esculentum</i>	Bracken Fern
<i>Pultanaea daphnoides</i>	Large Leaf Bush Pea
<i>Santalum obtusifolium</i>	Sandalwood
<i>Themeda australis</i>	Kangaroo Grass
<i>Westringia fruticosa</i>	Coastal Rosemary
<i>Zieria smithii</i>	Sandfly Zieria
UNDERSTOREY (vines & climbers)	
Botanical	Common
<i>Hardenbergia violacea</i>	Purple Coral Pea
<i>Podolobium ilicifolium</i>	Prickly Shaggy Pea
<i>Smilax glycyphylla</i>	Sweet Sarsaparilla
<i>Clematis aristata</i>	Old Man's Beard

Bushcare Group Name:

Coordinator Name:.....

Signature:

Date:/...../.....

Appendix 1 – Photo Captain St turning circle at Blenheim Beach where there is an on-going problem with rubbish dumping and illegal camping



Appendix 2 – Location of locked steel at the intersection of Captain St & Elizabeth St



Appendix 3 – Asset Protection Zone at the rear of Stuart King Reserve



Appendix 4 – White Sand Walking Track at Stuart King Reserve



Appendix 5 – Stuart King Reserve – Vincentia



Appendix 6 – 50 metre Vegetation Transect location – Barfleure Beach



Appendix 6 – 50 metre vegetation transect location – Stuart King Reserve



Appendix 7 – Location of proposed perimeter fencing at Plantation Point



Appendix 8 – Stuart King Reserve – APZ & Bushland boundary fence location map



Appendix 9 – Map showing locations of consolidated vegetation Island proposed for mulching and understory planting



Appendix 10 – Photo showing proposed location of consolidated vegetation island at Plantation Point Reserve

