



## ULLADULLA - CONJOLA ST RESERVE BUSHCARE ACTION PLAN

**Document Number:** D15/67084 • **Adopted:** 08/09/2015 • **Minute Number:** D15/266338 •  
**File:** 26281E • **Produced By:** Planning & Development Services Group • **Review Date:**  
08/09/18

### CONTACT INFORMATION

<b>Group Name:</b>	Ulladulla – North Head
<b>Contact:</b>	Peter Lloyd
<b>Address:</b>	57 Leo Drive, Narrawallee
<b>Telephone:</b>	(02) 4454 2082
<b>Reserve Name:</b>	Conjola St
<b>Reserve Number:</b>	SUL941
<b>Land Tenure:</b>	Crown Land CCM
<b>Community Land Type:</b>	Park/Natural Area

### 1. BUSHCARE GROUP GOALS

The goals of the Ulladulla – Conjola St Reserve Bushcare Group are as follows:

1. Maintain and improve the reserve's biodiversity by encouraging native forbs, herbs, grasses and other ground covers to regenerate.
2. Staged control/removal of invasive weed species at a rate commensurate with native vegetation regeneration and establishment.
3. Reduce the amount of gully and sheet erosion currently occurring in the reserve due to storm water management and cyclic maintenance regimes.
4. Raise awareness in the local neighbourhood of the environmental values of the reserve via direct face to face contact and production and distribution of information on the local ecology of the reserve.

2. **SHOALHAVEN BUSHCARE GROUP ACTIVITIES TABLE** (to be in conjunction with attached site map)  
**NOTE: Priority should be rated as H = High (within 12 months); M = Medium (1-3 years); L = Low**

GROUP ACTION (these should relate to your project description)	PRIORITY	METHOD	TIME
<b>Improving biodiversity and reduce erosion on the Conjola St Reserve</b>			
<p><b>Regeneration Actions:</b></p> <ol style="list-style-type: none"> <li>1. Identify native vegetation regeneration islands that already have existing diversity of understory native vegetation in which cyclic mowing can be removed (see map) to encourage regeneration of native groundcover species and reduce sheet erosion.</li> <li>2. Map these regeneration areas (see Bushcare Action Plan map page 3) and undertake regeneration in a staged approach.</li> <li>3. Start an initial trial of the regeneration areas 1 &amp; 2 (as per map) and create no mow areas to encourage regeneration of native flora (see methods for details).</li> <li>4. Monitor the trial regeneration sites with a view to undertaking the same actions in regeneration areas 3, 4 and 5.</li> </ol>	H	<ol style="list-style-type: none"> <li>1. Council staff and Bushcare Group to identify proposed regeneration islands.</li> <li>2. Council staff to map regeneration areas.</li> <li>3. Meet with Council staff to agree on regeneration areas as per map starting with areas 1 &amp; 2:               <ol style="list-style-type: none"> <li>a. Removal of cyclic mowing from the area to encourage ground cover growth;</li> <li>b. Add thick layer of mulch around the perimeter of the regeneration area;</li> <li>c. Spray perimeter of</li> </ol> </li> </ol>	2 to 5 years and On-going

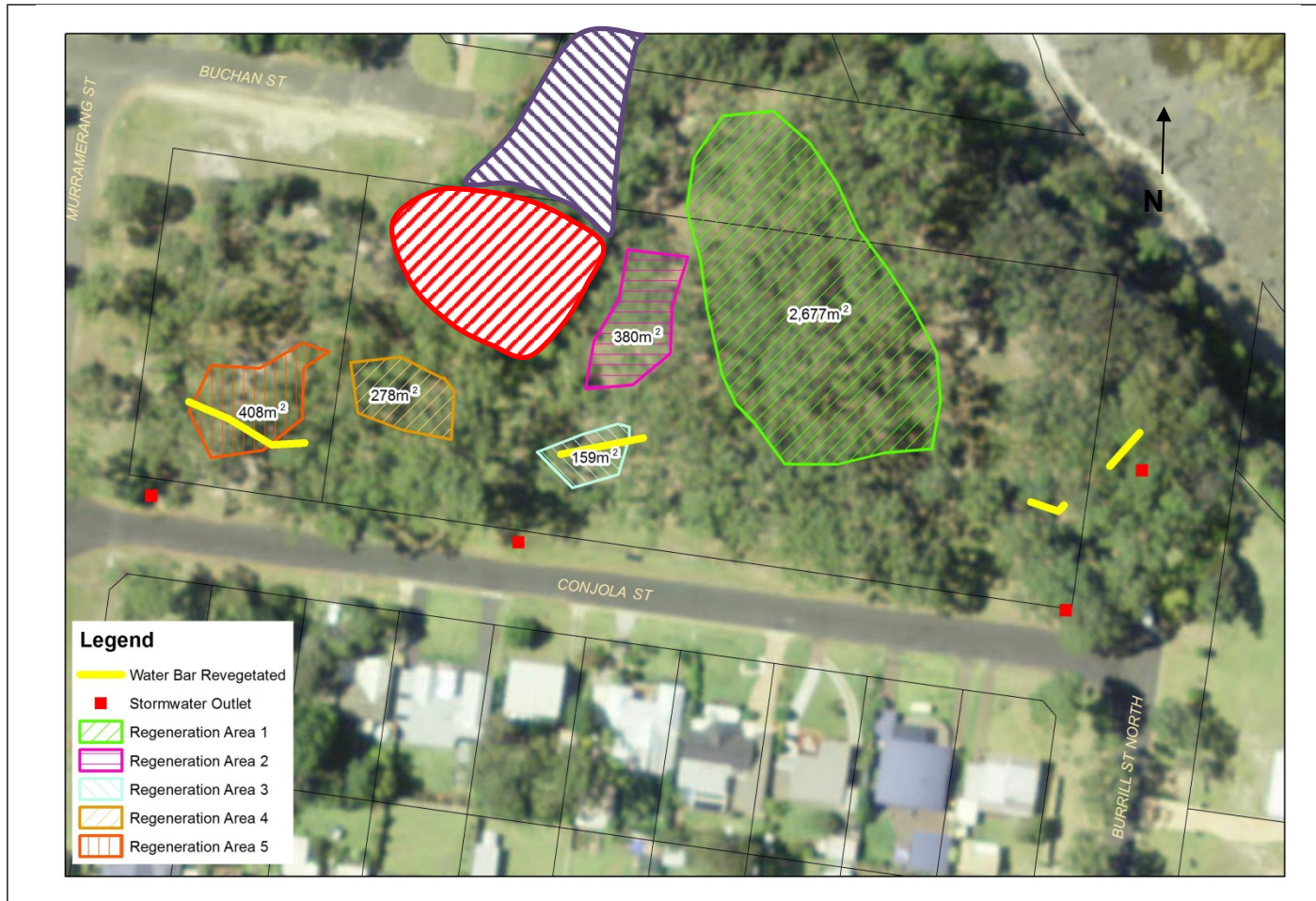
GROUP ACTION (these should relate to your project description)	PRIORITY	METHOD	TIME
		<p>mulch to prevent exotic grasses from colonizing;</p> <p>d. Install bollards at each corner of the regeneration area to give a visual indication that the area is a regeneration zone;</p> <p>e. Monitor and control annual weeds within the regeneration area;</p> <p>f. Monitor and control perennial weeds in the regeneration area.</p>	
<p><b>Erosion Control Actions:</b></p> <ol style="list-style-type: none"> <li>1. Shoalhaven Council to widen and create a swale drainage area between regeneration areas 3 &amp; 4 to reduce the storm water erosion</li> <li>2. Council to use excess soil from drainage works to create 200mm-300mm high water bar to slow the movement of storm water across the reserve and reduce sheet erosion and loss of top soil (see plan map</li> </ol>	H	<p>*See Bushcare Plan map for water bar locations and attached water bar specifications for constructions specifications</p> <p>* See plans suggested revegetation species list</p>	1 to 2 years and On – going

GROUP ACTION (these should relate to your project description)	PRIORITY	METHOD	TIME
<p>for water bar locations and appendix 1for water bar construction specifications)</p> <p>3. Bushcare Group to mulch and plant low growing native grasses into the water bars and maintain</p>			
<p><b>Area A (as per map)</b> – Upper section of large storm water gully in the north – west section of the reserve - this area is heavily impacted by storm water erosion and nutrient loading. This has led to an increase in weed cover and density of weeds such as Kahili Ginger Lily, Japanese Honey Suckle, Winter Senna and Monbretia. There are still remnants of native vegetation in the core of the area with the dominant species being <i>Eucalyptus pilularis</i>, <i>Corymbia gummifera</i>, <i>Banksia integrifolia</i> and <i>Banksia serrata</i>. The dominant mid and understory native species is <i>Lomandra longifolia</i>, <i>Pittosporum undulatum</i> and <i>Gahnia spp.</i> The Honeysuckle is dominating the area and the Bushcare Group will undertake the following actions:</p> <ol style="list-style-type: none"> <li>1. Bushcare Group to work from healthy areas to more degraded areas.</li> <li>2. Seek assistance from a labour market program such as “The Green Army” to remove/control Winter Senna and Kahili Ginger Lily.</li> <li>3. Bushcare Group to undertake a follow-up maintenance,</li> </ol>	M	<p>Area A</p> <p>Work from healthy less degraded areas towards more degraded targeting the following weed species:</p> <ol style="list-style-type: none"> <li>1. Hand removal of Japanese Honeysuckle using paint and scrape.</li> <li>2. Selective cut and paint of Senna/Cassia.</li> <li>3. Spot spraying of exotic</li> </ol>	On-going

<b>GROUP ACTION (these should relate to your project description)</b>	<b>PRIORITY</b>	<b>METHOD</b>	<b>TIME</b>
working from healthy areas to degraded areas.		grasses using low dilution rates of glyphosate 1:200 ratio.	
<p><b>Area B (as per map)</b> - Lower section of storm water gully adjacent to Area A in the north – west section of the reserve – this section has greater native plant diversity then Area A, particularly in the understory. The actions for Area B are as follows:</p> <ol style="list-style-type: none"> <li>1. Control/remove Coastal Morning Glory and undertake follow up control.</li> <li>2. Control/removal of Winter Senna, Asparagus Fern and Indian Hawthorn working from poor areas to good.</li> </ol>	L	<p>Area B Work from healthy less degraded areas towards more degraded targeting the following weed species:</p> <ol style="list-style-type: none"> <li>1. Spray out larger infestations of Morning Glory and paint scrape smaller infestations with Vigilant.</li> <li>2. Crown out Asparagus Fern or spot spray larger infestations with Metsulfuron Methyl.</li> <li>3. Cut and paint Senna/Cassia.</li> <li>4. Cut and paint Indian Hawthorn.</li> </ol>	On - going
<p>Bushcare Group to undertake weed control of smaller vegetation island at the bases of larger Eucalypts as follows:</p> <ol style="list-style-type: none"> <li>1. Remove/control weeds.</li> </ol>		<ol style="list-style-type: none"> <li>1. Spray vegetation island edges with 1:200 glyphosate to reduce competition from exotic grasses.</li> <li>2. Hand removal of weeds where practical.</li> </ol>	On-going

<b>GROUP ACTION (these should relate to your project description)</b>	<b>PRIORITY</b>	<b>METHOD</b>	<b>TIME</b>
<b>Public awareness raising of reserve environmental values</b>			
Actions: 1. Door knock and invite local residents to join the Bushcare Group. 2. Door knock and distribute brochure/factsheet on the ecology of the reserve.	M	1. Council to assist with the production of information for distribution to residents. 2. Bushcare Group to door knock and distribute information.	1 year

### 3. BUSHCARE GROUP ACTION PLAN MAP



Storm Water Gully – Area A



Storm Water Gully – Area B



#### 4. BUSHCARE GROUP WHS & EQUIPMENT REQUIREMENTS

Type of Activity	Yes	SWMS name included
Manual weed control (cut and paint, scrape and paint etc.)	√	SWMSNR030
Chemical control (spraying of herbicides)	√	SWMSNR030
Planting	√	SWMSNR040
Minor construction (walking track, fencing, outdoor furniture)		
Propagation & seed collection	√	SWMSNR040
Education (school groups, field days etc.)	√	
Other		

#### 5. COUNCIL SUPPORT

Council to provide the following support:

- Supply of mulch and plants
- Drainage works
- Installation of bollards
- Technical advice and assistance
- Provision of mulch
- Tools and equipment
- Grant application and management support
- Printing
- One Bushcare Support Trainer to assist the group on site for 4 hours per month
- Herbicide

#### 6. HAS A SITE HAZARD AND RISK ASSESSMENT BEEN COMPLETED FOR THE BUSHCARE SITE?

Yes                      √                      No



**7. LIST THE PERSONAL PROTECTION EQUIPMENT REQUIRED FOR VOLUNTEERS WHILST WORKING ON THE SITE**

<b>PPE Equipment Required</b>	<b>Date issued</b>
First Aid Kit	Nov 2014
Gloves	Nov 2014
Sunscreen	Nov 2014
Insect repellent	Nov 2014

**8. POSSIBLE FUTURE FUNDING**

<b>Project</b>	<b>Funding source</b>
N/A	N/A

**9. PLAN WILL BE REVIEWED EVERY THREE YEARS**

**Next review due:**

8 September 2018

**10. PLEASE LIST OTHER LOCAL OR REGIONAL MANAGEMENT PLANS OR STRATEGIES THAT THIS PLAN RELATES TO**

<b>Name of document</b>	<b>Year it was produced</b>	<b>Produced by</b>
Foreshores Reserve Policy	2005	Shoalhaven City Council
Generic Community Land PoM - Parks	2001	Shoalhaven City Council
Coastal Zone Plan of Management	2012	Shoalhaven City Council

## 11. BUSHCARE SITE RECOMMENDED PLANTING/REVEGETATION SPECIES LIST

<b>UNDERSTOREY (grasses, herbs, climbers)</b>	
<b>Botanical</b>	<b>Common</b>
<i>Dianella caerulea</i>	Native Flax Lily
<i>Gahnia sp</i>	Sword Grass
<i>Hardenbergia violacea</i>	Happy Wonderer
<i>Hibbertia aspera</i>	Rough Guinea Flower
<i>Hibbertia scandens</i>	Native Guinea Flower
<i>Kennedia prostrata</i>	Running Postman
<i>Kennedia rubicunda</i>	Dusky Coral Pea
<i>Lomandra longifolia</i>	Spiny Matt Rush
<i>Themeda triandra</i>	Kangaroo Grass

## 12. BUSHCARE SITE WEED LIST (The following weeds have been recorded on the site)

<b>Noxious</b>	<b>Environmental</b>
<b>Blackberry</b>	
	<b>Coastal Morning Glory</b>
	<b>Cassia</b>
	<b>Honeysuckle</b>
	<b>Formosan Lily</b>
	<b>Ginger Lily</b>
	<b>Agapanthus</b>
	<b>Montbretia</b>
	<b>Indian Hawthorn</b>
	<b>Asparagus Fern</b>
	<b>Giant Paspalum</b>
	<b>Buffalo Grass</b>

## 13. BUSHCARE SITE SPECIES LIST (The following species have been recorded on the site)

<b>OVERSTOREY TREES</b>	
<b>Botanical</b>	<b>Common</b>
<i>Banksia integrifolia</i>	Coastal Banksia
<i>Banksia serrata</i>	Old Man Banksia
<i>Corymbia gummifera</i>	Bloodwood

<i>Eucalyptus Pilularis</i>	Blackbutt
<i>Syncarpia glomulifera</i>	Turpentine
<b>SHRUBS</b>	
<b>Botanical</b>	<b>Common</b>
<i>Acacia longifolia</i>	Sydney Golden Wattle
<i>Acacia myrtifolia</i>	Myrtle Wattle
<i>Acacia suaveolens</i>	Sweet Scented Wattle
<i>Acacia ulicifolia</i>	Prickly Mosses
<i>Allocasuarina littoralis</i>	Black She Oak
<i>Banksia spinulosa</i>	Hairpin Banksia
<i>Breynia oblongifolia</i>	Native Privet
<i>Dodonaea triquetra</i>	Native Hops
<i>Persoonia levis</i>	Geebung
<i>Pittosporum undulatum</i>	Sweet pittosporum
<i>Platysace lanceolata</i>	Shrubby Platysace
<i>Podolobium ilicifolium</i>	Prickly Shaggy Pea
<i>Pultenaea daphnoides</i>	Large Bush Pea
<i>Ziera smithii</i>	Sandfly Zieria
<b>UNDERSTOREY (grasses, herbs, orchids)</b>	
<b>Botanical</b>	<b>Common</b>
<i>Dianella caerulea</i>	Native Blue Flax Lily
<i>Dipodium punctatum</i>	Hyacinth Orchid
<i>Entolasia stricta</i>	Wiry Panic Grass
<i>Eragrostis brownii</i>	Browns Love Grass
<i>Gahnia sp</i>	Sword Grass
<i>Imperata cylindrica</i>	Blady Grass
<i>Lomandra longifolia</i>	Spiny Matt Rush
<i>Pteridium esculentum</i>	Common Bracken
<i>Themeda triandra</i>	Kangaroo Grass
<b>UNDERSTOREY (vines &amp; climbers)</b>	
<b>Botanical</b>	<b>Common</b>
<i>Billardiera scandens</i>	Apple Dumpling
<i>Eustrephus latifolius</i>	Wombat Berry
<i>Hardenbergia violacea</i>	Happy Wonderer
<i>Hibbertia aspera</i>	Rough Guinea Flower
<i>Hibbertia scandens</i>	Native Guinea Flower
<i>Kennedia prostrata</i>	Running Postman
<i>Kennedia rubicunda</i>	Dusky Coral Pea
<i>Smilax glyciphylla</i>	Sweet Sarsaparilla

**Bushcare Group Name:** .....

**Coordinator Name:**.....

**Signature:** .....

**Date:** ...../...../.....

## Appendix 1: Conjola St Reserve Water Bar Construction Specifications

