



THE FRONTLINE NEWS

Coastal Management in Shoalhaven

Shoalhaven
City Council

Welcome to the second edition of the Frontline News

Issue 1 can be viewed [here](#) on Council's website.

If you wish to continue receiving this newsletter, please send your request to council@shoalhaven.nsw.gov.au

Whilst we would prefer to use email, we are also happy to post it to you.

Important announcements made at the 23rd NSW Coastal Conference held in Ulladulla.

At the conference dinner on November 13, 2014 the NSW Environment and Heritage Minister, the Hon Rob Stokes MP (left), announced stage two of the NSW Government's coastal reforms.



The Hon Rob Stokes. Photo by Lisa Hardwick

They consist of three key elements:

1. A new Coastal Management Act to replace the current legislation, the Coastal Protection Act of 1979.
2. New arrangements to better support council decision making including a new coastal management manual, a decision support framework and improved technical advice
3. More sustainable arrangements for funding and financing coastal management activities.

Shoalhaven wins environmental awards

In Issue 1 of Frontline News reference was made to The South Coast Regional Sea-Level Rise Planning & Policy Framework. The document was developed in conjunction with Eurobodalla Shire Council, to provide both Councils with more specific information about sea level rise projections for the south coast. It was on public exhibition from 1.8.14 to 12.9.14 and in November it was the 2014 joint winner of the Climate Change Action category at the Local Government NSW Excellence in the Environment Awards.

It was also highly commended at the 2015 Australian Coastal Councils Conference awards.



The Hon Rob Stokes presents the award to Isabelle Ghetti (Manager Natural Resources & Floodplain Unit) SCC, Norm Lenehan (Coastal & Flood Management Planner) Eurobodalla Shire Council and Terry Bailey (Chief Executive) Office Environment & Heritage. See over. Photo by Eventpix.

New Citywide Coastal Engagement project

We'll keep you posted about this citywide project which will unfold during the year. There'll be plenty of opportunities to participate and learn more about our coast.



Aboriginal elder Noel Butler speaking to NSW Coastal Conference delegates during the Mollymook field trip

What are Council's new sea level rise projections?

The short answer is an expected rise of 10 cm by 2030, 23 cm by 2050 and 36 cm by 2100 from today's sea level.

A brief explanation of the figures can be viewed [here](#).

Why did Council have to adopt its own sea level rise projections?

Under current NSW Government legislation, Council needs to consider the future impacts of climate change in its decision making and, of course, sea level rise is an important component of climate change.

Back in 2009, the NSW Government provided the projections and Councils had to consider, as a minimum, 40cm sea level rise by 2050 and 90cm rise by 2100.

Then In 2012, the State Government withdrew these benchmarks and offered assistance to coastal councils to adopt their own, regional sea level rise projections, based on the best available scientific evidence.

SCC formed a partnership with Eurobodalla Shire Council, secured funding from the NSW Government and engaged Whitehead & Associates to prepare the [South Coast Regional Sea Level Rise Planning & Policy Framework](#) (The Report) which includes findings of the Intergovernmental Panel on Climate Change (IPCC).

Following public exhibition, new sea level rise projections were adopted by Council, however the implementation framework in The Report was not adopted.

Council reached its decision using part of The Report together with submissions received from the Nongovernmental Panel on Climate Change (NIPCC) and a local civil engineer.

Some coastal facts

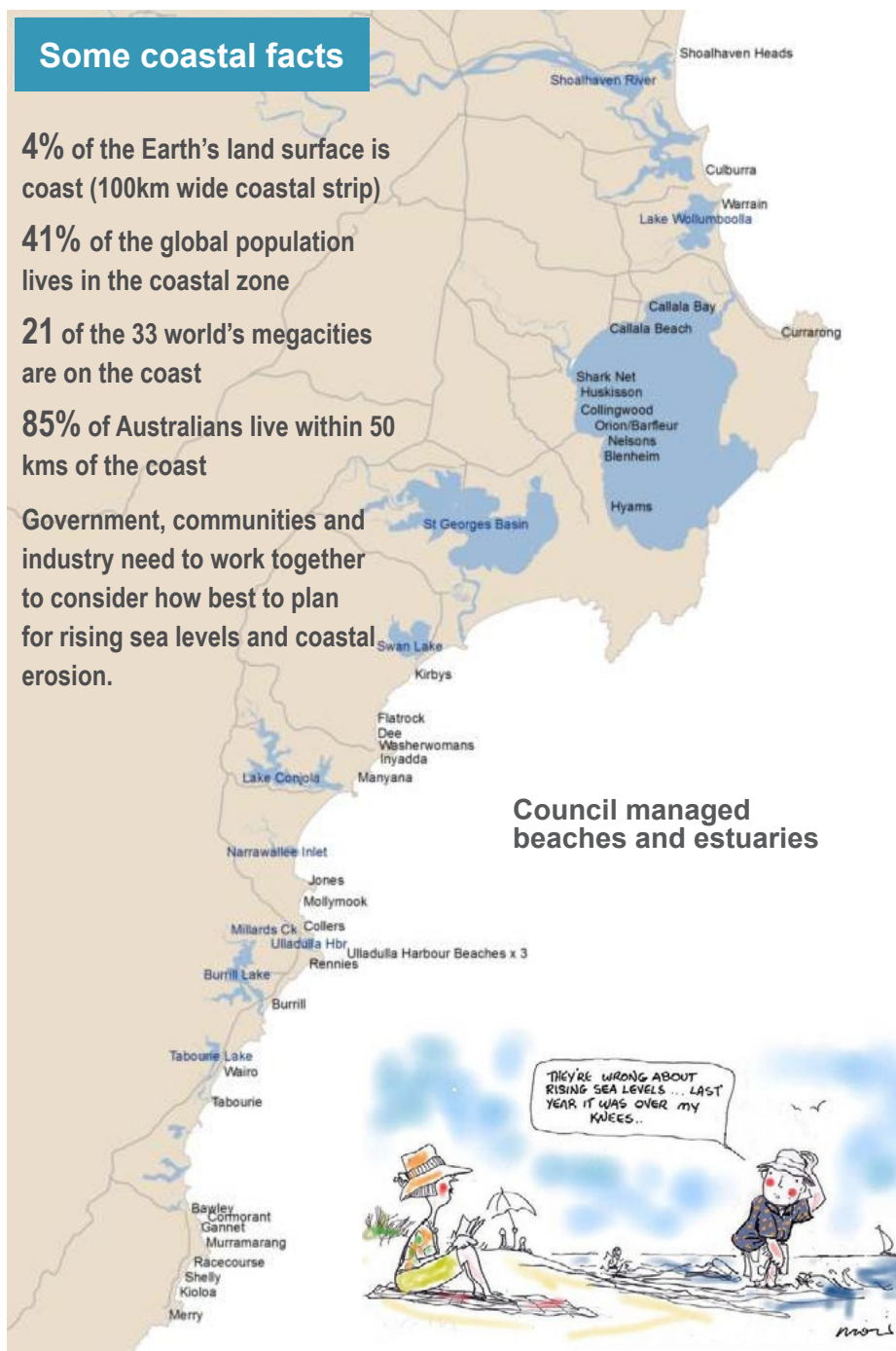
4% of the Earth's land surface is coast (100km wide coastal strip)

41% of the global population lives in the coastal zone

21 of the 33 world's megacities are on the coast

85% of Australians live within 50 kms of the coast

Government, communities and industry need to work together to consider how best to plan for rising sea levels and coastal erosion.



Council managed beaches and estuaries



Our Coast

165 kilometres from Shoalhaven Heads to North Durras; the longest of any local government area in NSW.

109 beaches; **42** managed by SCC

14 major estuaries / lakes; **9** managed by SCC - Shoalhaven River, Lake Wollumboola, St Georges Basin, Swan Lake, Lake Conjola, Narrawallee Inlet, Ulladulla Harbour/Millards Creek, Burrill Lake, Tabourie Lake. Management plans exist for each of these waterways.

9 primary beaches where public and private assets are at immediate risk from erosion: Shoalhaven Heads, Warrain, Callala Bay beach, Culburra, Currarong, Narrawallee, Collingwood, Mollymook & Callala.

Coastal erosion remediation option plans will be developed for these nine beaches.

A draft generic emergency plan has been prepared for all council managed beaches and site specific emergency plans exist for the most vulnerable beaches.

All this and more will be discussed during the citywide engagement process this year.

