



CURRAMBENE CREEK BUSHCARE ACTION PLAN

Document Number: D15/67075 • **Adopted:** 08/09/2015 • **Minute Number:** D15/266338 •
File: 26280E • **Produced By:** Planning & Development Services Group • **Review Date:**
08/09/18

CONTACT INFORMATION

Group Name:	Woollamia – Huskisson Bushcare Group
Contact:	Roger Hart
Address:	33 Edendale Street, Woollamia
Telephone:	0438491761
Email:	dodger@shoal.net.au
Reserve Name:	Currumbene Creek Crown Foreshore Reserve
Reserve Number:	BWO610
Land Tenure:	Crown CCM
Comm. Land Type:	Natural Area

1. BUSHCARE GROUP GOALS

The goal of the Currumbene Creek Bushcare Action Plan are as follows:

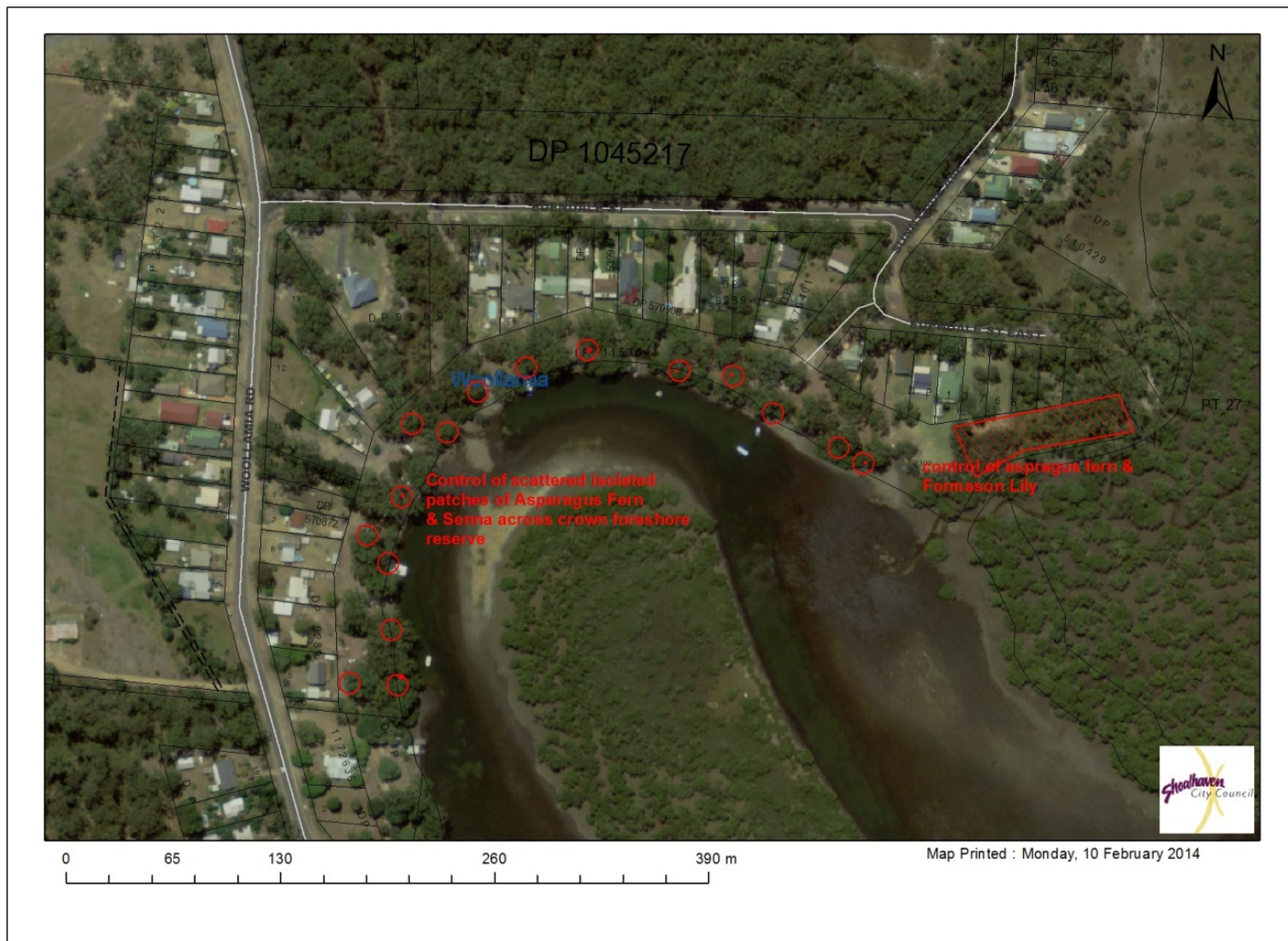
1. To improve the long term health and biodiversity of the foreshore reserve (see plan's map for location details).

2. SHOALHAVEN BUSHCARE GROUP ACTIVITIES TABLE (to be in conjunction with attached site map)

NOTE: Priority should be rated as H = High (within 12 months); M = Medium (1-3 years); L = Low

GROUP ACTION (these should relate to your project description)	PRIORITY	METHOD	TIME
<p>Weed Control Control environmental weeds as follows:</p> <ol style="list-style-type: none"> 1. <i>Lantana camara</i> (Lantana) 2. <i>Asparagus asparagoides</i> (Ground Asprargus) 3. <i>Senna pedula spp pendula</i> (Cassia) 4. <i>Lilium formosanum</i> (Taiwan Lily) 5. <i>Bryophyllum delagoense</i> (Mother of Millions) 6. <i>Ipomea cairica</i> (Mile a Minute) 7. <i>Dipogon lignosus</i> (Dolichos Pea) 8. <i>Lonicera japonica</i> (Japanese Honeysuckle) 9. <i>Nephrolepis cordifolia</i> (Fishbone Fern) 10. <i>Passiflora edulis</i> (Passion Fruit) 11. <i>Agapanthus praecox spp. orientalis</i> (Agapanthus) 12. <i>Bromeliad</i> and other succulents 13. <i>Opuntia species</i> (Prickly Pear) 14. <i>Chlorophytum comosum</i> (Spider Plant) 	H	Combination of manual removal, cut and paint, scrape and paint and some spot spraying using recommend herbicide.	All year
<p>Planting</p> <ol style="list-style-type: none"> 1. Revegetation using species from the list in the Bushcare Plan on page 7 of the document. This will be done where weeds have been controlled/removed. 2. Propagation and/or transplanting of Grey Mangrove to protect the bank. 	M	Planting as required.	Autumn & winter

3. BUSHCARE GROUP ACTION PLAN MAP A (Weed control)



4. BUSHCARE GROUP WHS & EQUIPMENT REQUIREMENTS

Type of Activity	Yes	SWMS name included
Manual weed control (cut and paint, scrape and paint etc.)	√	SWMSNR040
Chemical control (spraying of herbicides)	√	SWMSNR040
Planting	√	SWMSNR030
Minor construction (walking track, fencing, outdoor furniture)	√	SWMSNR020
Propagation & seed collection		
Education (school groups, field days etc.)		
Other		

5. COUNCIL SUPPORT

Council will provide the following:

- Assistance with spraying and weed control
- Provision of tools, equipment
- Provision of plants, stakes, guards etc.
- Provision of chemical
- Training and technical assistance
- First Aid
- Assistance with grant applications and management
- Personal Protective Equipment (PPE)

6. HAS A SITE HAZARD AND RISK ASSESSMENT BEEN COMPLETED FOR THE BUSHCARE SITE?

Yes √ No

7. LIST THE PERSONAL PROTECTION EQUIPMENT REQUIRED FOR VOLUNTEERS WHILST WORKING ON THE SITE

PPE Equipment Required	Date issued
First Aid Kit	April 2015
Gloves	April 2015
Sunscreen	April 2015
Insect repellent	April 2015

8. POSSIBLE FUTURE FUNDING

Project	Funding source
Assistance with weed control and revegetation component – including mangroves	Various

9. PLAN WILL BE REVIEWED EVERY THREE YEARS

Next review due:

8 September 2018

10. PLEASE LIST OTHER LOCAL OR REGIONAL MANAGEMENT PLANS OR STRATEGIES THAT THIS PLAN RELATES TO

Name of document	Year it was produced	Produced by
SCC Foreshore Reserves Policy	2004	Strategic Planning and Infrastructure group

11. BUSHCARE SITE RECOMMENDED PLANTING/REVEGETATION SPECIES LIST

SHRUBS	
Botanical	Common
<i>Acacia longifolia</i> spp <i>longifolia</i>	Sydney Golden Wattle
<i>Eleocarpus reticulatus</i>	Blueberry Ash
<i>Leucopogon lanceolatus</i>	Lace Bearded-Heath
UNDERSTOREY (grasses, herbs, climbers)	
Botanical	Common
<i>Dianella caerulea</i>	Blue Flax Lily
<i>Garnia clarkei</i>	Sword Grass
<i>Hardenbergia violocae</i>	Happy Wanderer
<i>Hibbertia scandens</i>	Native Guinea Flower
<i>Isolepis nodosa</i>	Knobbly Rush
<i>Kennedia rubicunda</i>	Dusky Coral Pea
<i>Lomandra longifolia</i>	Matt rush
<i>Rubus parviflorous</i>	Native Raspberry
<i>Themeda australis</i>	Kangaroo Grass

12. BUSHCARE SITE WEED LIST (The following weeds have been recorded on the site)

Noxious	Environmental	Control Method
Lantana		Cut and paint
	Asparagus Fern	Chemical control or manually remove
	Honeysuckle	Scrape and paint
	Taiwan Lily	Cut and drip
	Spider Plant	Manually remove
	Mother of millions	Chemical or Manually Remove
	Bromeliad spp	Manually remove
	Other cacti and succulents eg jade plant	Manually remove or cut and paint
	Cassia	Cut and paint
	Agapanthus	Dig out
	Fishbone Fern	Chemical or manual removal
	Dilochos Pea	Chemical control
	Prickly Pear	Manually remove
	Passionfruit	Manually remove
	Mile a Minute	Chemical control

13. BUSHCARE SITE SPECIES LIST (The following species have been recorded on the site)

OVERSTOREY TREES	
Botanical	Common
<i>Avicennia marina</i>	Grey Mangrove
<i>Banksia integrifolia</i>	Coast banksia
<i>Banksia serrata</i>	Old man banksia
<i>Casuarina gluaca</i>	Swamp oak
<i>Corymbia gummifera</i>	Bloodwood
<i>Eucalyptus botryoides</i>	Bangalay
<i>Eucalyptus pilularis</i>	Blackbutt
SHRUBS	
Botanical	Common
<i>Acacia longifolia</i> spp. <i>longifolia</i>	Sydney Golden Wattle
<i>Acacia parramattensis</i>	Parramatta Green Wattle
<i>Acacia ulicifolia</i>	Prickly Mosses
<i>Breynia oblongifolia</i>	Native Privet
<i>Leucopogon lanceolatus</i>	Lace Bearded-Heath
<i>Melaleuca ericifolia</i>	Swamp Paperbark
<i>Monotoca elliptica</i>	Pigeonberry Ash
<i>Notalea oblongifolia</i>	Mock Olive
<i>Pittosporum undulatum</i>	Sweet Pittosporum
<i>Santalanum obtusifolium</i>	Sandlewood
UNDERSTOREY (grasses, herbs, orchids)	
Botanical	Common
<i>Baumea juncea</i>	Jointed Twig Rush
<i>Dianella caerulea</i>	Blue Flax Lily
<i>Entolasia stricta</i>	
<i>Garnia clarkei</i>	Sword Grass
<i>Geranium homearum</i>	Northern Cransbill
<i>Hydrocotyle peduncularis</i>	
<i>Isolepis nodosa</i>	Knobbly Rush
<i>Lomandra longifolia</i>	Matt rush
<i>Macrozamia communis</i>	Burrawang
<i>Microleana stipoides</i>	Weeping Grass
<i>Oplismenus aemulus</i>	Basket Grass
<i>Phragmites australis</i>	Native Reed
<i>Pimelia ligustrina</i>	Tall Rice Flower
<i>Pteridium esculentum</i>	Bracken fern
<i>Rubus parviflorous</i>	Native Raspberry
<i>Tetragonia tetragonoides</i>	Warrigal Green
UNDERSTOREY (vines & climbers)	

Botanical	Common
<i>Billarderia scandens</i>	Apple Dumpling
<i>Cassytha glabella</i>	Slender Devils Twine
<i>Commelina cyanea</i>	Scurvy Weed
<i>Eustrephus latifolous</i>	Wombat Berry
<i>Geitonoplesium cymosum</i>	Scrambling Lily
<i>Glycine microphylla</i>	Love Creeper
<i>Hardernbergia violacea</i>	Happy Wanderer
<i>Hibbertia scandens</i>	Native Guinea Flower
<i>Kennedia rubicunda</i>	Dusky Coral Pea

Bushcare Group Name: Huskisson Woollamia Bushcare Group

Coordinator Name: Roger Hart

Signature:

Date:/...../.....