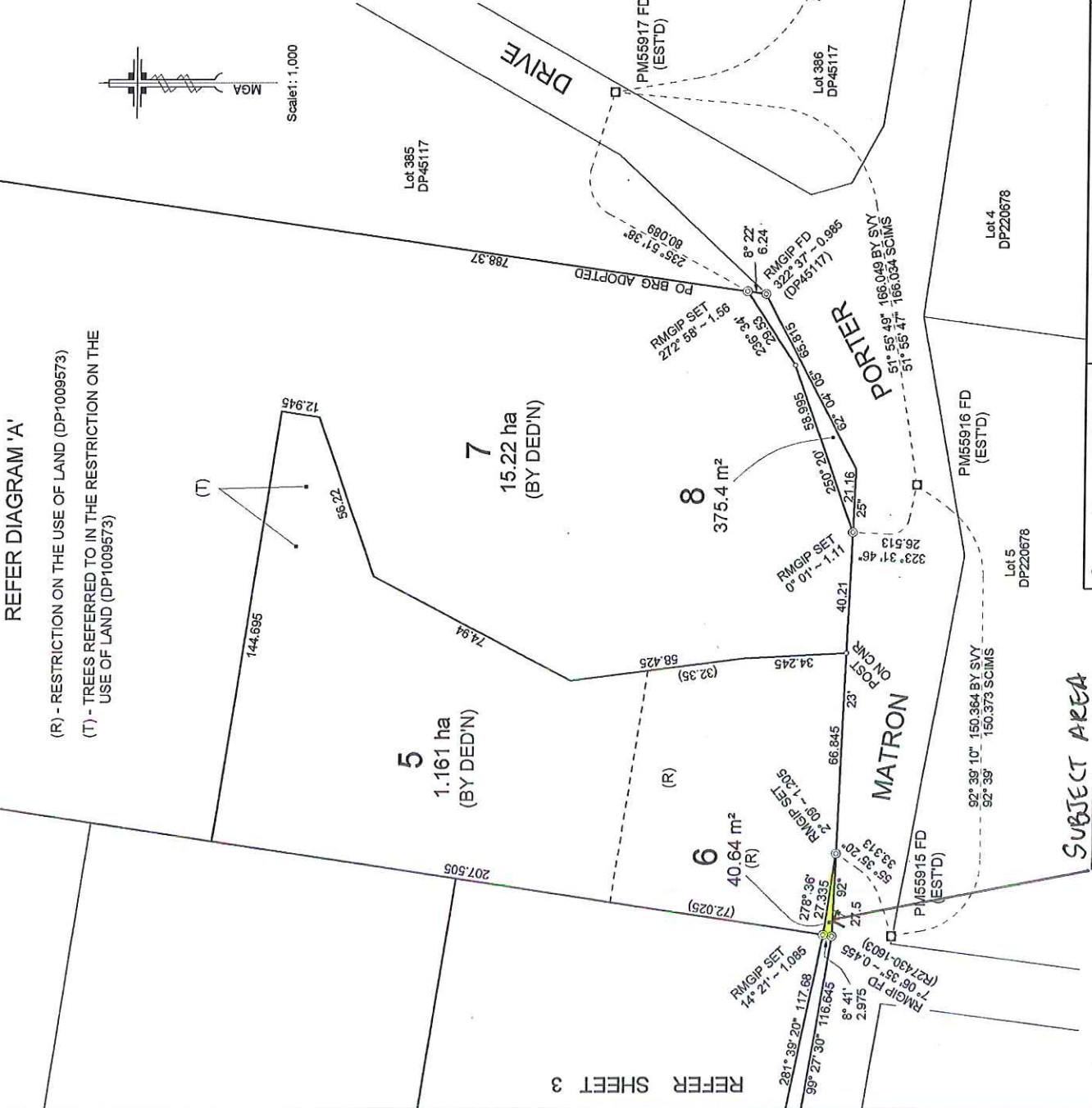
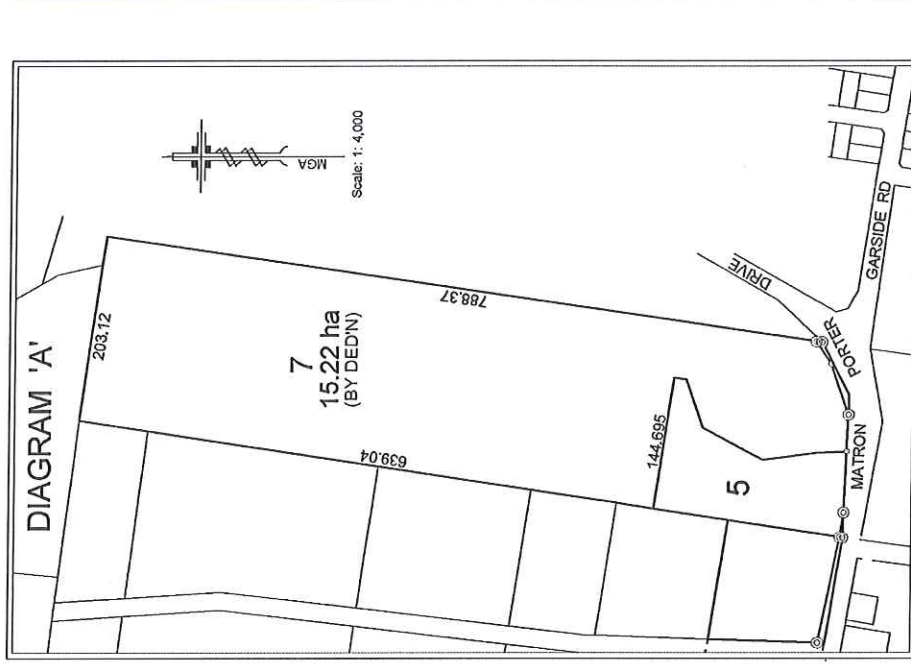




REFER DIAGRAM 'A'

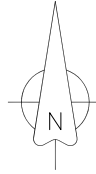
- (R) - RESTRICTION ON THE USE OF LAND (DP1009573)
- (T) - TREES REFERRED TO IN THE RESTRICTION ON THE USE OF LAND (DP1009573)



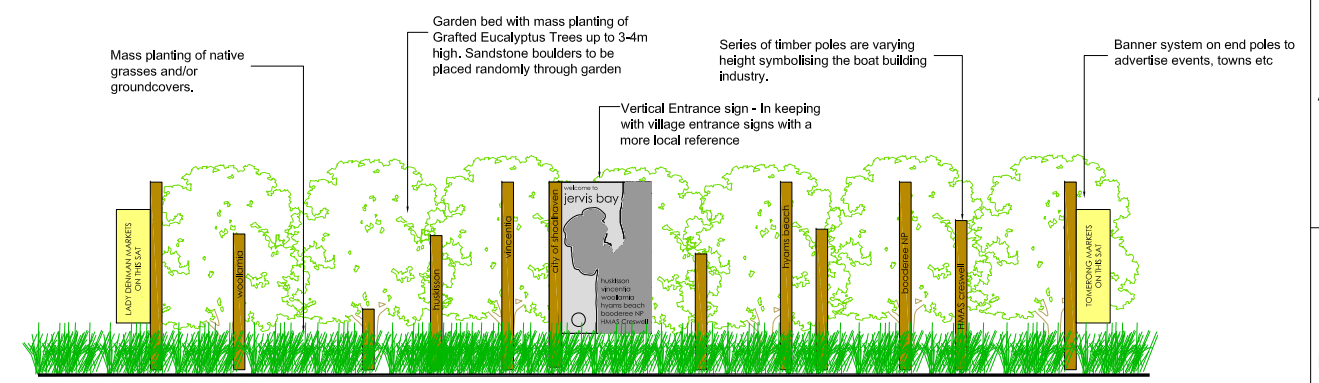
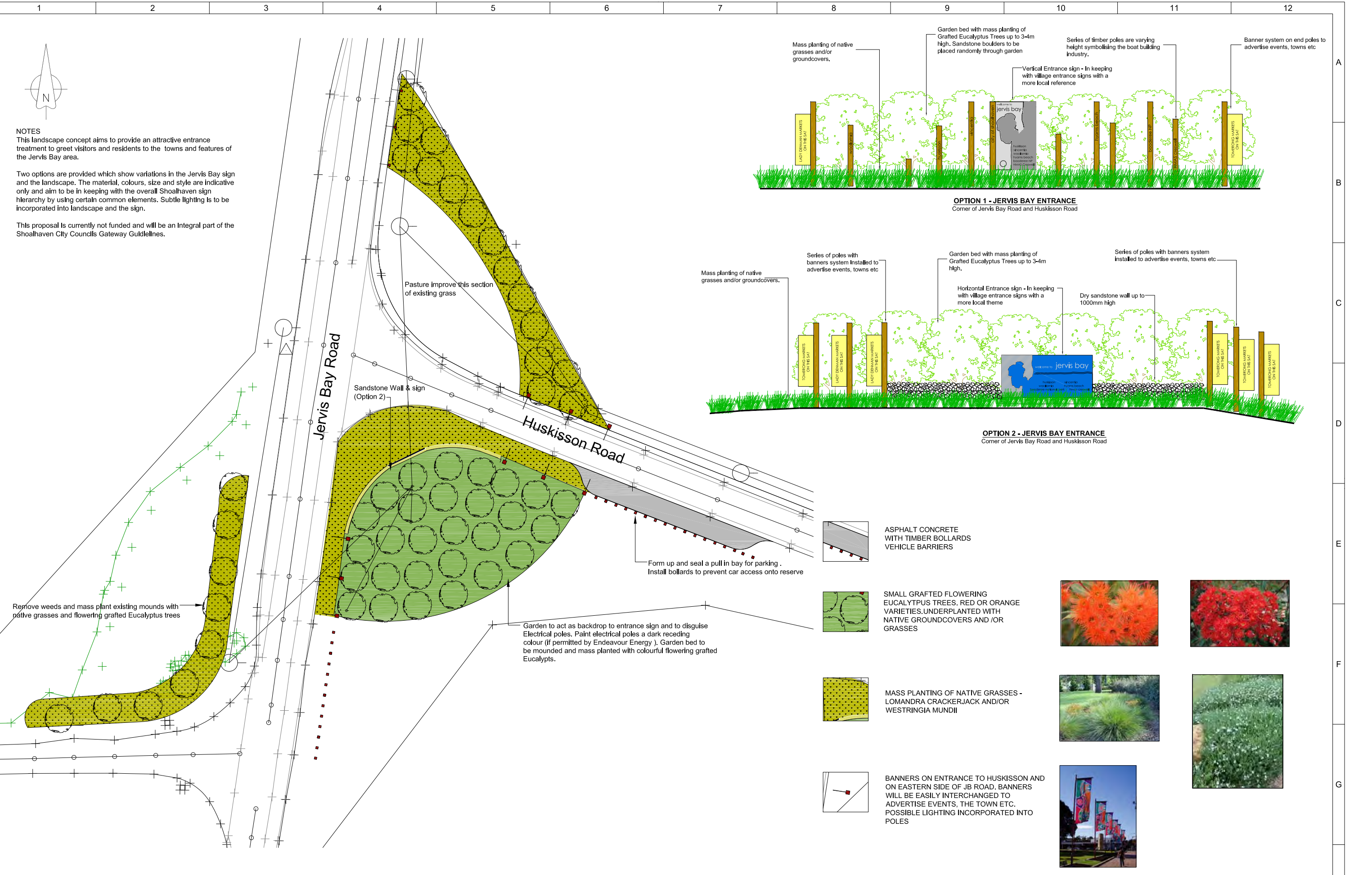
REFER SHEET 3

SUBJECT AREA

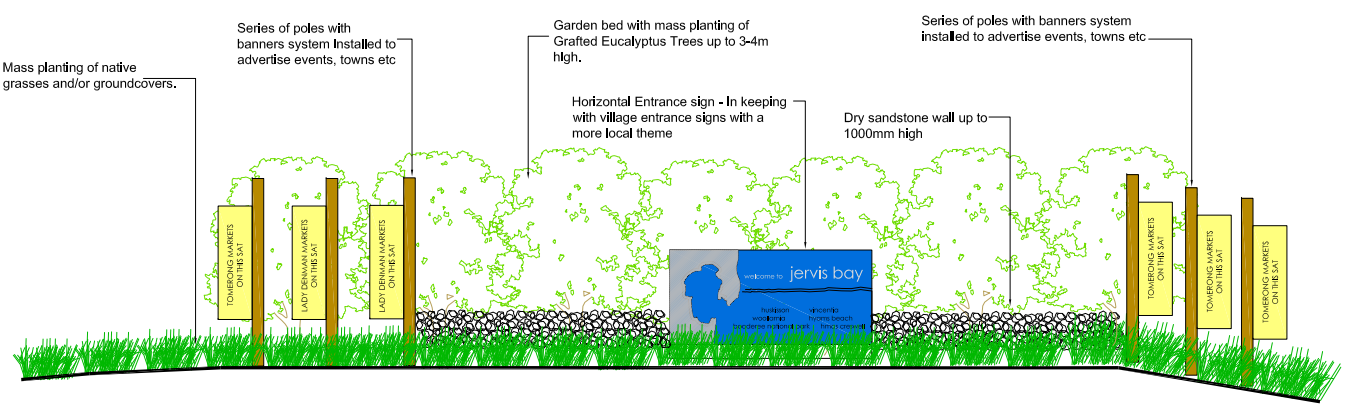
Surveyor: MICHAEL G POIDEVIN Date of Survey: 13 OCT 2015 Surveyor's Ref: 70-2015	Registered	DP
PLAN OF LAND TO BE ACQUIRED UNDER THE ROADS ACT 1993., AFFECTING LOT 12 IN DP807589, LOT 21 IN DP1174684, LOTS 1 AND 2 IN DP1009573	LGA: SHOALHAVEN Locality: MILTON Subdivision No: Lengths are in metres. Reduction Ratio 1: 3,500	



NOTES
 This landscape concept aims to provide an attractive entrance treatment to greet visitors and residents to the towns and features of the Jervis Bay area.
 Two options are provided which show variations in the Jervis Bay sign and the landscape. The material, colours, size and style are indicative only and aim to be in keeping with the overall Shoalhaven sign hierarchy by using certain common elements. Subtle lighting is to be incorporated into landscape and the sign.
 This proposal is currently not funded and will be an integral part of the Shoalhaven City Councils Gateway Guidelines.



OPTION 1 - JERVIS BAY ENTRANCE
 Corner of Jervis Bay Road and Huskisson Road



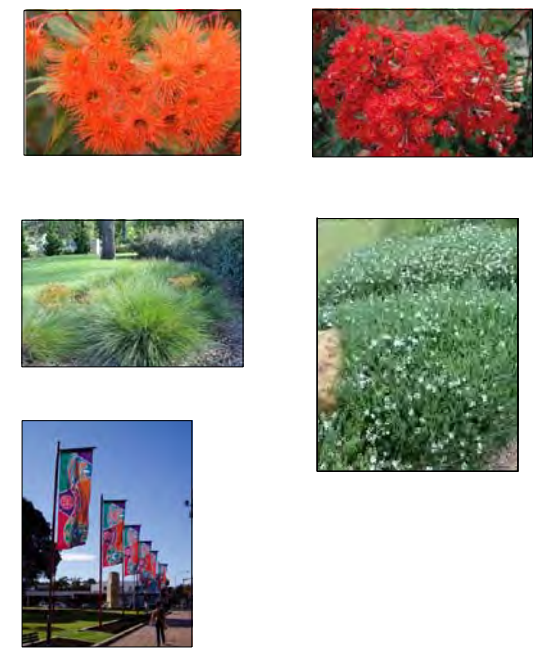
OPTION 2 - JERVIS BAY ENTRANCE
 Corner of Jervis Bay Road and Huskisson Road

ASPHALT CONCRETE WITH TIMBER BOLLARDS VEHICLE BARRIERS

SMALL GRAFTED FLOWERING EUCALYPTUS TREES, RED OR ORANGE VARIETIES, UNDERPLANTED WITH NATIVE GROUNDCOVERS AND /OR GRASSES

MASS PLANTING OF NATIVE GRASSES - LOMANDRA CRACKERJACK AND/OR WESTRINGIA MUNDII

BANNERS ON ENTRANCE TO HUSKISSON AND ON EASTERN SIDE OF JB ROAD. BANNERS WILL BE EASILY INTERCHANGED TO ADVERTISE EVENTS, THE TOWN ETC. POSSIBLE LIGHTING INCORPORATED INTO POLES



DESIGNED: K. Murray	Oct 2013	SURVEYED: K. Zammit
DRAWN: K. Murray	Oct 2013	FIELD BOOK:
CHECKED:		ORIGIN OF LEVELS:
APPROVED:		DATUM: AHD
DRAWING FILE: 4985_18.dwg		CIVILCAD FILE:

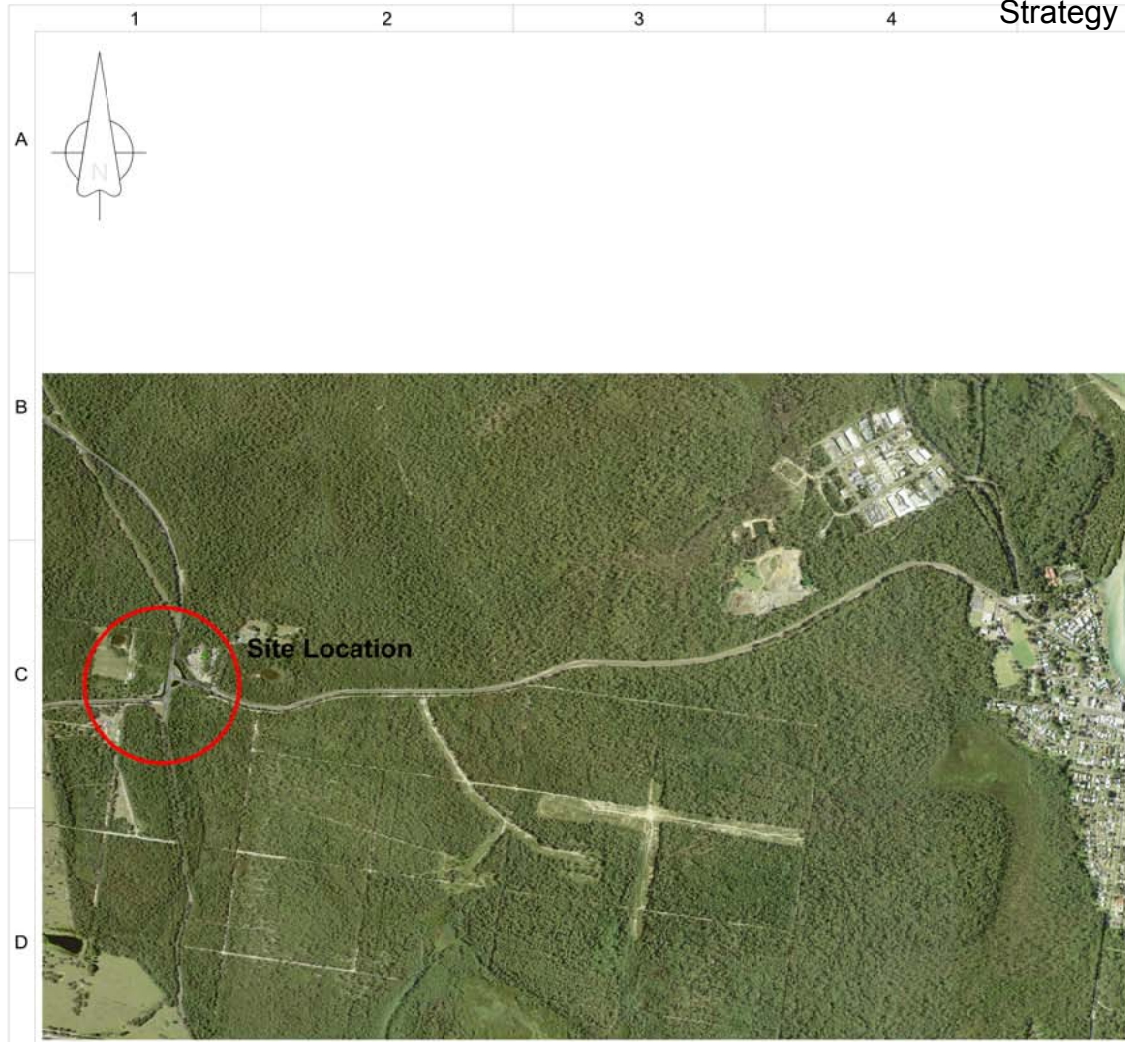
AMENDMENTS



CITY OF SHOALHAVEN
 Jervis Bay Entrance
 Corner of Jervis Bay Road and Huskisson Road
 Concept Plan

SCALE: 1:2000 for A1 size plot, 1:4000 for A3 size plot
 Do not scale off drawings.
 Confirm all dimensions on site prior to start of construction.
 NOTE: This drawing, design and the copyright therein are the property of Shoalhaven City Council. It has been produced by the Assets & Works - Project Delivery Section and must not be used, reproduced or copied wholly or in part without the permission of the Project Delivery Manager.

DIRECTOR OF ASSETS & WORKS: DATE:
Draft Copy Only
 - PLAN REFERENCE -
5263.01



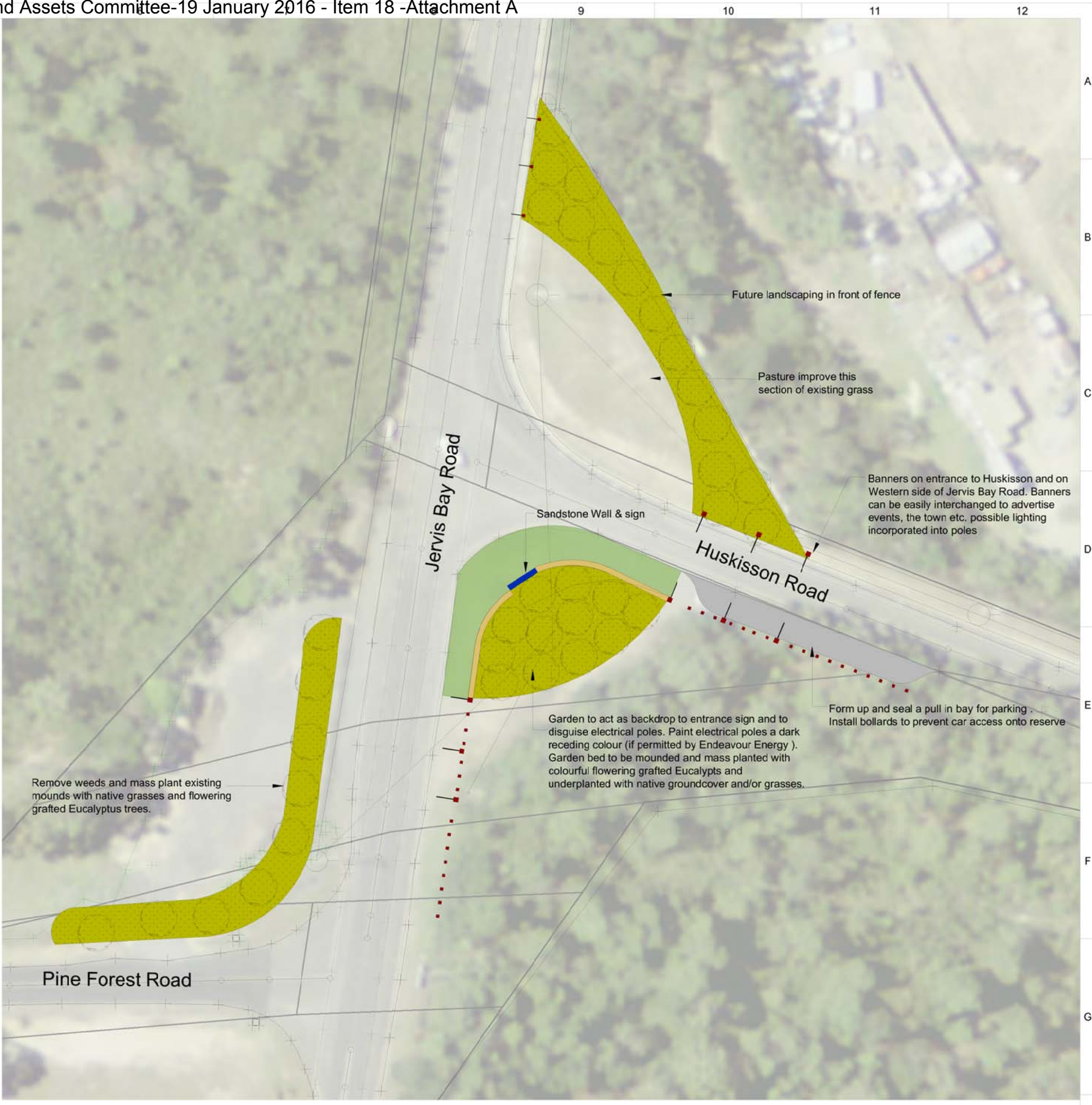
LOCATION PLAN

NOTES

This landscape concept aims to provide an attractive entrance treatment to greet visitors and residents to the towns and features of the Jervis Bay area.

The material, colours, size and style are indicative only and aim to be in keeping with the overall Shoalhaven sign hierarchy by using certain common elements. Subtle lighting is to be incorporated into landscape and the sign.

This proposal is currently not funded and will be an integral part of the Shoalhaven City Councils Gateway Guidelines.



DESIGNED: K. Murray	Oct 2013	SURVEYED: K. Zammit	AMENDMENTS
DRAWN: K. Murray	Oct 2013	FIELD BOOK:	
CHECKED:		ORIGIN OF LEVELS:	
APPROVED:		DATUM: AHD	
DRAWING FILE: 4985_18.dwg		CIVILCAD FILE:	



CITY OF SHOALHAVEN
 Jervis Bay Entrance
 Corner of Jervis Bay Road and Huskisson Road
 Concept Plan

SCALE: 1:2000 for A1 size plot, 1:4000 for A3 size plot
 Do not scale off drawings.
 Confirm all dimensions on site prior to start of construction.
 NOTE: This drawing, design and the copyright therein are the property of Shoalhaven City Council. It has been produced by the Assets & Works - Project Delivery Section and must not be used, reproduced or copied wholly or in part without the permission of the Project Delivery Manager.

DIRECTOR OF ASSETS & WORKS: DATE:
Draft Copy Only
 - PLAN REFERENCE -
5263.03