

SHOALHAVEN CITY COUNCIL

SHOALHAVEN ARTS BOARD

to be held on Thursday 11 August, 2016
commencing at 1.00pm

City Administrative Centre
Bridge Road
NOWRA NSW 2541

26 July, 2016

Dear Member

NOTICE OF MEETING

You are hereby invited to attend the meeting of the Shoalhaven Arts Board to be held on **Thursday 11 August, 2016** commencing at **1.00pm** in the City Administrative Centre, Bridge Road Nowra, in Jervis Bay Room 1&3 for consideration of the following business.

Yours faithfully

R D Pigg
General Manager

Please note that refreshments will not be supplied at this meeting

BUSINESS OF MEETING

1. Apologies
2. Minutes of the Previous Meeting
3. Declarations of Interest
4. Presentation – Wayne Prior – Sea Change Closing Ceremony
5. Report – Corporate and Community Services
6. Addendum Reports
7. General Business
 - Verbal Update – Library Services
 - Verbal Update – Shoalhaven Entertainment Centre
 - Verbal Update – Arts & Culture

MEMBERSHIP – Quorum (4)

Clr Baptist - Chairperson
Clr Kearney
Clr Robertson
Robert Swieca
Merilynn Weiss

Troy Lenihan
Alison Chiam
Warwick Keen
Ian Grant

Cell Phones:

Council's Code of Meeting Practice states "All cell phones are to be turned off for the duration of the meeting".

Council recognises the value and place of creative expression, cultural facilities, and innovative arts activities and embraces a strategic direction to facilitate progressive cultural development across the city.

Purpose

- a) To develop strategy and policy both for the Shoalhaven City Council as well as in alignment with the Region.
- b) To develop and implement policy, planning and promotion for the broad arts within existing resources and using co-opted panel of peers for professional advice. They include:
 - Visual Arts
 - Heritage and Museum Sector
 - Literature
 - Performing Arts
 - Audience development

Delegated Authority

- Make recommendation on the arts to Council
- Appoint suitable representatives to fill casual vacancies on a set term basis
- Inform and recommend policy for arts related funding programs, and where required by Council, vote on related matters
- To establish a peer panel of professionals, experts and practitioners across art forms, heritage and cultural platforms to be co-opted as needed for input and advice to the Shoalhaven Arts Board
- To establish a Shoalhaven Arts Foundation:
 - To support the development and enrichment of broad arts across the Shoalhaven including visual, heritage, literature & performing arts
 - To ensure that the Foundation in its governance, membership and charter are independent/ and at arms-length from Council yet which needs to work in concert with the Shoalhaven Arts Board and the Council and the community needs
 - To fundraise and develop a sustainable principal investment to generate ongoing grant funds

Relevant staff will work collaboratively with the Shoalhaven Arts Board to:

- Develop and implement activities to achieve objectives in line with the Shoalhaven Arts Board recommendations, the Council's policies and corporate plan

MINUTES OF THE SHOALHAVEN ARTS BOARD MEETING HELD ON WEDNESDAY 22 JUNE 2016 IN THE JERVIS BAY MEETING ROOMS 1 & 3, CITY ADMINISTRATIVE CENTRE, NOWRA COMMENCING AT 1.06PM

The following members were present:

Clr Baptist
Clr Robertson
Clr Kearney – arrived 1.21pm
Ian Grant
Warwick Keen
Alison Chiam
Merilynn Weiss

Others Present:

Jane Lewis – Community and Culture Manager
Bronwyn Coulston – Unit Manager, Arts and Culture
Sarah Taylor – Library Services Manager
Stephen Donnelly – Manager Shoalhaven Entertainment Centre

Apologies: Troy Lenihan

1. Minutes of Previous Meeting

MOTION: Moved: Warwick Keen / Second: Alison Chiam

RESOLVED that the minutes from the meeting of the Shoalhaven Arts Board of Wednesday 16 March 2016 and Thursday 12 May 2016 be confirmed.

CARRIED

CORPORATE AND COMMUNITY SERVICES

2. Defunding of National Exhibition Touring Support (NETS) File 2123E

The Arts Centre Manager provided a verbal update in relation to this report.

The defunding of the NETS will have significant impact on the Shoalhaven and some exhibitions are on hold as funding is now uncertain.

It was noted that there is a National Campaign for the funding and Cards of support for can be obtained from the SEC, signed and sent to any federal politician to be encouraged to support reinstating funding for the arts.

MOTION: Moved: Ian Grant / Second: Merilynn Weiss

RESOLVED, in accordance with the Committee's delegated authority from Council, that the Shoalhaven Arts Board write to the Federal Minister for the Arts and the Federal Member for Gilmore and Shadow Minister for the Arts expressing concern and request the Federal Government reinstate NETS funding through Australia Council immediately.

CARRIED

3. Verbal Updates

Clr Kearney arrived 1.21pm

SEC Manager

The SEC Manager provided a verbal update and the following points were raised:

- The new Nowra VIC (in the Entertainment Centre) is being refitted and the services of the VIC will operational by Wednesday 29 June 2016
- The SEC restructure has been forwarded to the General Manager for approval and will be provide additional resources if approved
- 24season shows booked for next year
- Combined customer service for the visitor information centre and ticket sales
- Additions to the SEC will include mobile brochure stands and a concierge desk under the stairs
- The SEC box office will trade 7 days per week provided through the Visitor Information Services. The café will also be open 10am-2pm on weekends with seasonal changes to hours of operation
- The hearing loop system is installed in the Studio and Auditorium and we will consider a personal hearing loop if recommended as part of the access review. No funding is available yet.
- Will be trying to increase community engagement by negotiating with partners including schools and community groups to encourage them to utilise the space.

Library Services Manager

The Library Services Manager provided a verbal update and the following points were raised:

- Continually engaging with the community and running regular programming at all three main branches, such as Rhyme time, Storytime, Writing Groups, Tech Help
- 3D printers have been purchased and a program has begun with East Nowra Public School to engage with students. The two printers will be moved between branches and customers can use them to print out their 3D projects.
- Milton Library is open an additional day per week on Monday – this is through a joint program with the community for volunteers to run this additional day. Library staff are providing training and are liaising with the community.
- The Nowra Library has been recarpeted throughout the building
- Local Heritage – ongoing project to digitise local heritage images for the historical collection – up to 300+ images digitised so far and the aim is ultimately to have these available on Libraries Australia website. Also working on the future of the Local Heritage Collection – what formats/mediums to use for preservation that will ensure best storage, access and longevity of collection.
- The Flood Boat is currently stored at the depot in Ulladulla and Council has applied for a grant from the National Maritime Museum for its refurbishment. Once the

refurbishment is complete it is proposed to be housed at the Nowra Aquatic Park – additional grant applications will be needed to provide funding for its housing

- A new floor plan is in the making for the Nowra Library – this next financial year additional moveable shelving will be purchased to allow for the space to be reconfigured depending on the changing needs of the library and community.

Arts and Culture Manager

The Arts and Culture Manager provided a verbal update and the following points were raised:

- There was an announcement on ABC radio regarding ACOvirtual and a package will go online and TV
- Have received several bookings from schools for ACO Virtual and the program has been well received
- The Club Grants Category 3 was not successful for the Environmental Control System
- The Regional Capital NSW Grant cannot be applied for in 2016 because it requires matched funding
- A Grant application has been submitted for the Collection Management System
- Application also submitted for project funding for a 2017 Community Collaborative Exhibition
- 2017 exhibitions schedule is underway and highlights are:
 - Now Contemporary Art Prize
 - Garry Grearly Photography
 - Jacqui Dean Photography
 - Sue Paull – established Gatehouse Gallery at Long Bay Jail
- From 1 July 2016 will move back to standard staffing hours
- Will continue to grow the public programs and awareness for all public programs
- The ability to pay for public programs online has been established

Cirs Baptist and Robertson

Cirs Baptist and Robertson provided a verbal update of a recent meeting.

We held a meeting with Frank Howarth who is currently the President of Museums Australia to seek assistance for our Arts Foundation and revenue streams. The discussion also covered exploring the structure of the foundation and gifts received and ways of recognition in order for the foundation to run significantly well.

Frank also runs a consulting business and is available to provide services at a cost. He will aim to submit a proposal and quote for the August meeting.

MOTION:

Moved: Alison Chiam / Second: Ian Grant

RESOLVED that the Shoalhaven Arts Board support in principle that 3 meetings be held with Frank Howarth for the following purposes:

1. With Stakeholders to see what the foundation would and could do (Vision and Strategy)
2. With Key staff and the members of the Arts Board to look at the mechanics
3. With the Mayor, General Manager and Councillors to make sure they are on board with the vision and strategies that the SAB want to progress with.

CARRIED

GENERAL BUSINESS

4. Additional Item – Arwon Monument

Clr Baptist advised that Linda Klarfeld a Sculptor has been in touch in relation to the proposed monument for Arwon and Dimestre

5. Additional Item – Sea Change Closing Ceremony

Alison Chiam provided a verbal report on the recent Sea Change Closing Ceremony

Alison advised that Craig Walsh was the visual artist who created the display for the Sea Change Closing Ceremony. He used music, visual artist and projection to tell a story about the local indigenous area.

MOTION: Moved: Alison Chiam / Second: Warwick Keen

RESOLVED that the Shoalhaven Arts Board invite Wayne and Diana to give a presentation to the next Arts Board Meeting.

CARRIED

There being no further business, the meeting concluded, the time being 2.01pm.

Clr Baptist
CHAIRPERSON

SHOALHAVEN ARTS BOARD

THURSDAY, 11 AUGUST 2016

CORPORATE AND COMMUNITY SERVICES

1. **Grant Program - 2016/17**

File 53032E

SECTION MANAGER: Jane Lewis

PURPOSE:

To set the Shoalhaven Arts Board Grant Program for Financial Year 2016/17.

RECOMMENDED, in accordance with the Committee's delegated authority from Council, that the \$20,000 Shoalhaven Arts Board Grants Program be structured as follows:

- a) **Program 1 – Two (2) Grants of up to \$5,000 be offered on a theme to be decided at the meeting**
- b) **Program 2 – One (1) grant of up to \$10,000 be offered for the development of a public artwork with a theme to be decided at the meeting**

OPTIONS

1. Adopt the resolution following discussion on themes (preferred option)
2. The Shoalhaven Arts Board advice on an alternate resolution

DETAILS

In the 2015/16 Financial Year the Arts Board adopted a new approach to the awarding of grants and successfully funded three major and ambitious projects that will continue to contribute to the social and artistic life within the Shoalhaven. These grants were:

- a) A \$5,000 grant to See Change for their collaboration with artist Craig Walsh and the production of the closing ceremony artwork for the 2016 festival
- b) A \$5,000 grant to artist Clayton Campion for his collaboration with the Jervis Bay Maritime Museum and the production of an artwork to be sited near Moona Moona Creek
- c) A \$10,000 grant to artist Elyssa Sykes-Smith for the development of a piece of public art that will be sited at the Shoalhaven Entertainment Centre

To ensure that the grant program is successfully carried out in the 2016/17 Financial Year, the Arts Board need to consider and make a determination on the focus for this years

program to enable the grants to be advertised. A decision on the focus / theme will enable the grants program to be advertised in September, allow the Arts Board Grants Sub Committee to consider the submissions and make a recommendation to a future meeting of the Arts Board ensuring that all money allocated to the grants is fully expended prior to the end of the Financial Year.

The grant program will be announced in September and two workshops will be held for interested applicants. Applications will close mid / late October with a report on the grant applications submitted to the Arts Board in November, following consideration by the Arts Board Grants Subcommittee.

FINANCIAL IMPLICATIONS:

Funding of \$20,000 is allocated in Financial Year 2016/17 to support the Shoalhaven Arts Board Grants Program.

COMMUNITY ENGAGEMENT:

The Arts Board Grant program will be advertised in the following ways:

- Public Notice
- On Council's Website and Facebook sites
- On the Arts Centre Website and Facebook sites
- Via E-Newsletters distributed through Arts, Libraries, SEC, Economic Development and Tourism
- Media Release

In addition staff will prepare and offer a workshop open to individuals and organisations who are interested in learning more about the grants program and how to go about making a submission.

2. Shoalhaven Arts Board Art Acquisition Sub-Committee

File 2123E

SECTION MANAGER: Jane Lewis

PURPOSE:

To advise the Shoalhaven Arts Board members on the recommendations of the Shoalhaven Arts Board Art Acquisitions Sub-Committee regarding additions to the collection through donation and purchase.

RECOMMENDED, in accordance with the Committee's delegated authority from Council, that:

- a) **The three (3) donations from Phillip Cooper be accepted into the City Art Collection and that a letter thanking and accepting the works be sent to Mr Cooper**

-
- b) That the work **Bundanon** by **Randall Sinnamon** be purchased for the **Regional Gallery Collection**
 - c) That the work **Quasi Dependence** by **Elyssa Sykes-Smith** be hired for a period of **18 months (including the 6 months it has already been on show for)**

OPTIONS

- 1. Adopt the Recommendation as printed
- 2. The Shoalhaven Arts Board provide an alternate resolution

DETAILS

1. Offer of Donation by Phillip Cooper



Shoalhaven River (with Pulpit Rock)



Greenwell Point Wharf c.2000



Currarong c.1995

Background: Phillip Cooper has lived on the South Coast and around the Shoalhaven for much of his life, working as a painter in a number of places and running a small gallery in Bomaderry and Berry for a considerable period. Through art classes he organised, many artists who are now well respected in the Shoalhaven, learnt a range of skills and developed art networks. These works are highly reflective of the environment within the Shoalhaven. The City Art Collection currently has one other work by Phillip Cooper 'End of the line – Bomaderry' valued at \$1,200.

The proposed donations meet the criteria of the Shoalhaven City Council Art Collection (POL14/23) under section 3.1.6 under the following considerations:

- Local Significance
- Historical and/or cultural value
- Cost and/or value for money

Recommended for inclusion in the Shoalhaven City Art Collection.

2. Offer to purchase by Elyssa Sykes Smith

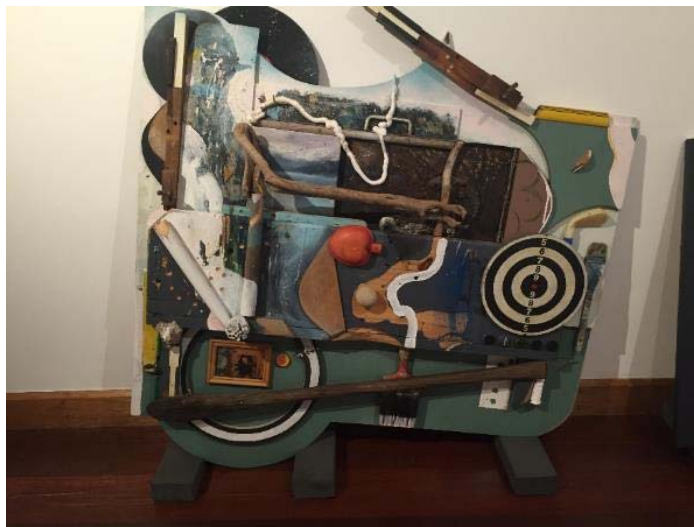


Sculptural Work – Wood and Metal

Background: Elyssa Sykes-Smith is a young Bomaderry based artist who is an emerging talent in the sculptural world. She has received significant recognition through entries in Sculptures by the sea, Sculptures at Scenic world and private commissions. Elyssa created Quasi Dependence as a site specific installation for the Shoalhaven Arts Centre as part of the Ta DA exhibition. The work is a significant draw card for the arts centre, and has rapidly become part of the growing outdoor gallery in Nowra.

The work was offered for purchase outright or hire. The Art Acquisition Sub-Committee feel that hiring the work is a better option at this stage, as public art tends to date, require significant maintenance and lose its appeal over time. By hiring the work for a limited amount of time initially the Arts Board and Art Acquisition Sub-Committee can assess how the work continues to add to the Shoalhaven City Arts Centre and the collection and what level of maintenance or repair is required long-term.

3. Consideration for purchase – Randall Sinnamon



Bundanon – Mixed Media \$2,800

Background: Randall Sinnamon is a local artist of note who has recently held a very successful solo show at the Shoalhaven City Arts Centre. He has exhibited internationally, and locally working across a wide range of media and forms. He is highly engaged in the local community, working as art educator with the South Coast Correctional Centre, a strong supporter of See Change and other festivals and activities in the region.

The work for consideration is from his recent show Assemblages and is a very clear response by an artist to his geographic location, his sources of inspiration and his acknowledgement of artistic legacy.

The inclusion of the work in the Regional Gallery Collection meets the criteria of the Acquisition and Collection Management Policy under section 3.1.6 under the following considerations:

- Significance of the Artist
- Advantageous opportunity
- Local Significance

FINANCIAL IMPLICATIONS:

The purchase of Randall's work will reduce the art acquisition fund by \$2,800. The 2016/17 allocation for purchase of art works is \$6,100, and there is a further Art Reserve with \$34,500 available for art work purchases. The acquisition of this work will have a minor financial implication within the insurance premiums, but as the current valuation is comparatively low the work will not add significantly to the overall value of the collection. The work will be added to the regular schedule of valuation and conservation review and might require expenditure in future years to conserve / maintain the work as per collection management standards.

Hiring the work by Elyssa Sykes-Smith will come under operational expenditure for the Arts Centre and have no financial impact on the Arts Reserve. The cost of hire will be \$3,600 and will be funded through the Arts Projects budget.

While this cost was unfunded in budget estimates, the exhibitions scheduled for the 2016-17FY are lower cost than previous years, due to being sourced locally and working with emerging artists, and as such this additional expenditure is able to be absorbed by the operational funds.

There is no financial implication to accepting the donation by Phillip Cooper. The works are of minimal value and will not add to the overall insurance premiums and any conservation or preservation activities that are required in future years will be costed as part of the overall collection management principles.

COMMUNITY ENGAGEMENT:

The Shoalhaven City Arts Centre provides a broad range of local and nationally significant exhibitions to showcase a cross section of artwork and media. It is important that our collection reflects the range of artists and art work produced within the Shoalhaven, and also provides an aspirational element to inspire artists and community members.

3. Legislative Council Enquiry into Museums and Galleries

File 2123E

SECTION MANAGER: Jane Lewis

PURPOSE:

To inform the Shoalhaven Arts Board of the Legislative Council inquiry into museums and galleries in NSW, including the Terms of Reference and submission dates.

RECOMMENDED, in accordance with the Committee's delegated authority from Council, that the Shoalhaven Arts Board develop a submission that responds to those elements of the Terms of Reference that are relevant.

OPTIONS

1. Adopt the Recommendation as printed
2. The Shoalhaven Arts Board provide an alternate resolution

DETAILS

On the 24th June 2016 it was announced that the General Purpose Standing Committee No. 4 will inquire into NSW Government Policy, Funding and Support for the state's cultural institutions including museum and gallery buildings and heritage collection.

It was acknowledged by the Committee Chair, the Hon Robert Borsak MLC, that museums and galleries play a vital part in attracting cultural tourism and strengthening the economy and cultural landscape of NSW.

The Terms of Reference for the inquiry include:

- Considering the performance and effectiveness of NSW government policy, funding and support for museums and galleries, museum and gallery buildings and heritage collections, including volunteer managed museums and museums managed by councils
- Opportunities to revitalise the structure, reach and impact of museums and galleries, and their research and collecting priorities
- Access to the collections of the Museum of Applied Arts and Sciences, the Australian Museum and any other state collections held in trust for the people of NSW and programs that promote physical and online access
- The development and transparency of advice to the government on priorities for NSW museums and galleries
- The impact of efficiency dividends on the budgets of museums and galleries over the last 10 years, and funding levels compared to other states
- The economic impact of museums and galleries on cultural tourism and their role in supporting the visitor economy in Sydney and regional NSW

This inquiry provides an opportunity for Shoalhaven Arts Board to make a submission on behalf of Council. Submissions are due 14th August and are made through the Parliamentary website. Responses and recommendations for the submission will be collated immediately and formatted for the Chair of the Board to sign off prior to submission.

FINANCIAL IMPLICATIONS:

Shoalhaven City Arts Centre receives no ongoing funding from Arts NSW or other agencies of the NSW Government and has a sporadic history of receiving grant funding.

In 2016/17 the Arts Centre has applied for funding from Arts NSW for a project valued at \$12,000 and will be applying for funding from Museums and Galleries NSW for projects totalling almost \$20,000.

The requirement for matched funding in the Arts NSW Regional Capital fund will prevent us for applying for any funding in that stream in 2016/17.

The current process for applying for annual funding, which supports operational and staffing budgets is restricted to those organisations that have achieved at least 3 project grants in 3 of the last 5 years. With the current competition for project funding, and the sporadic grant history of Shoalhaven City Arts Centre we will not be eligible for this type of funding for at least 3 years. A small Regional capital grant was received in 2013 for a project in 2014, with no funding achieved through Arts NSW in 2015. We have a project application in for 2017 and will develop further projects that are eligible for funding in 2018.

COMMUNITY ENGAGEMENT:

Financial and professional support from Arts NSW and the NSW government is essential for the continued growth and development of the Shoalhaven City Arts Centre.

Additional funding and priorities set by the NSW Government through their Arts funding programs, projects and programs enable a greater reach into the community to be developed and delivered. The funding of the SCAC by Shoalhaven City Council supports operational costs and maintenance of services, however a growth or increase in funding is restricted by the many other funding priorities that Council are faced with.

Arts NSW funding and Government devolved funding programs will provide opportunities for SCAC to continue to engage community members and offer a varied and interesting program of exhibitions and events subject to SCAC being in a position to meet contributory funding criteria.

4. Rebranding of the Shoalhaven City Arts Centre - Discussion Paper File 2123E

SECTION MANAGER: Jane Lewis

PURPOSE:

To commence discussions and explore possibilities for the renaming and rebranding of the Shoalhaven City Arts Centre.

RECOMMENDED

To be developed at the meeting and added as appropriate.

DETAILS

The Shoalhaven City Arts Centre was established in 2004 and joined the Regional and Public Galleries network in 2010. The commonly accepted name is *Shoalhaven City Arts Centre* and the formal name on some branding is *Shoalhaven City Arts Centre & Regional Gallery*.

The Shoalhaven City Arts Centre Strategic Plan 2020 identified the need to clarify the role, position and brand and consider a change in name to clarify the facility's identify.

The Strategic plan identified that some brand confusion exists with the 2020 Strategic Plan referring to the *Shoalhaven Regional Gallery*. This confusion over the name and purpose hinders the brand of the gallery and it's the reputation of the facility as it grows regionally, and creates difficulty with community members and visitors to easily identify who we are, where we are placed and what we do.

It is proposed that a new brand and name for the gallery is considered, a name that clearly identifies what we are (Regional Gallery / Art Gallery) and where we are located. The current trend throughout the Regional Gallery network is that the place name of the gallery takes precedence for easy identification of location. Examples include; Mosman Art Gallery, Goulburn Art Regional Gallery, Lismore Regional Gallery, Bathurst Regional Art Gallery, Wollongong City Gallery etc.

FINANCIAL IMPLICATIONS:

A renaming and rebranding of the Arts Centre will have budget implications, however a progressive role out would enable impact on the operation budgets to be managed. Funding for this would be sourced through both existing budget resources and budget bids in the 2017/18 onwards.

The largest area of expenditure would be signage – building and directional, costs associated with the re-branding design process and changes to website.

Any change of name and branding would be progressively added to new marketing and printed materials, social media and other items as replacement / update falls due.

Craig Milburn
DIRECTOR CORPORATE & COMMUNITY SERVICES

ADDENDUM REPORT 1

SHOALHAVEN ARTS BOARD

THURSDAY, 11 AUGUST 2016

CORPORATE AND COMMUNITY SERVICES

1. Shoalhaven Arts Board Art Acquisition Sub-Committee

File 2123E

SECTION MANAGER: Jane Lewis

PURPOSE:

To advise the Shoalhaven Arts Board members on the recommendations of the Shoalhaven Arts Board Art Acquisitions Sub-Committee regarding additions to the collection through donation and purchase.

RECOMMENDED, in accordance with the Committee's delegated authority from Council, that:

- a) The work *The Baron Falls* by Louis Frank, c. 1884 be accepted as a donation into the Regional Gallery Collection.

OPTIONS

1. Adopt the Recommendation as printed
2. The Shoalhaven Arts Board provide an alternate resolution

DETAILS

1. Offer of Donation by Hazel and Austen Seccombe



The Barron Falls, St Pauls Creek, Nowra. Louis Frank 1884, oil on canvas. 1030x740mm framed.

Background: This work was presented to Edwin Seccombe during his term as Mayor of Nowra (1887-1890). Edwin Seccombe was also the owner of the Milton Hotel, now Heritage Bakery. The work was then passed down through the generations, and now due to imminent move by the current owner (Edwin's grandson) into a retirement village, the work is being offered as a donation.

The proposed donations meet the criteria of the Shoalhaven City Council Art Collection (POL14/23) under section 3.1.6 under the following considerations:

- Local Significance
- Historical and/or cultural value
- Cost and/or value for money

FINANCIAL IMPLICATIONS:

There is no cost for the acquisition of this work, as it is a donation directly to Council. However there may be some costs involved in transporting the work from its current location in Narrabri to Nowra, and as the work is unsighted there may be some need for conservation and cleaning work to occur prior to display.

There is no current valuation of the work, however other works by Louis Frank have sold at auction for amounts between \$1,000 and \$14,000. Valuation of this work would be important for assessing the impact on insurance premiums, however this cost, along with conservation and preservation are part of the overall collection management budgets and operating expenditure of the Arts Centre.

COMMUNITY ENGAGEMENT:

The Shoalhaven City Arts Centre provides a broad range of local and nationally significant exhibitions to showcase a cross section of artwork and media. It is important that our collection reflects the range of artists and art work produced within the Shoalhaven, and also provides an aspirational element to inspire artists and community members. This work with a strong provenance linking it to the history of Nowra and the local area has strong community engagement potential.

Craig Milburn
DIRECTOR CORPORATE & COMMUNITY SERVICES