

Floodplain Risk Management Study

FIGURES

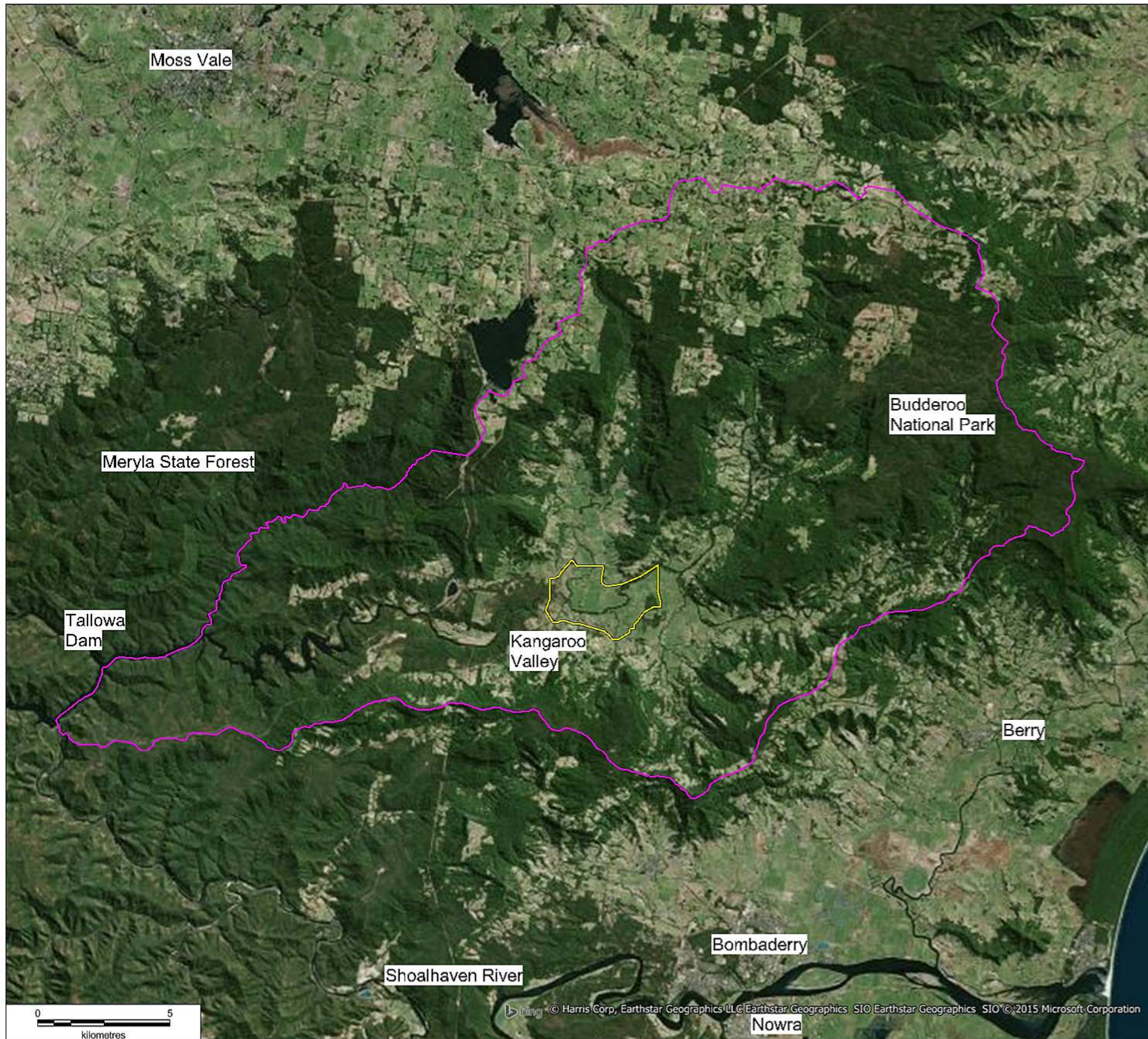




Figure 2-1

Catchment Area

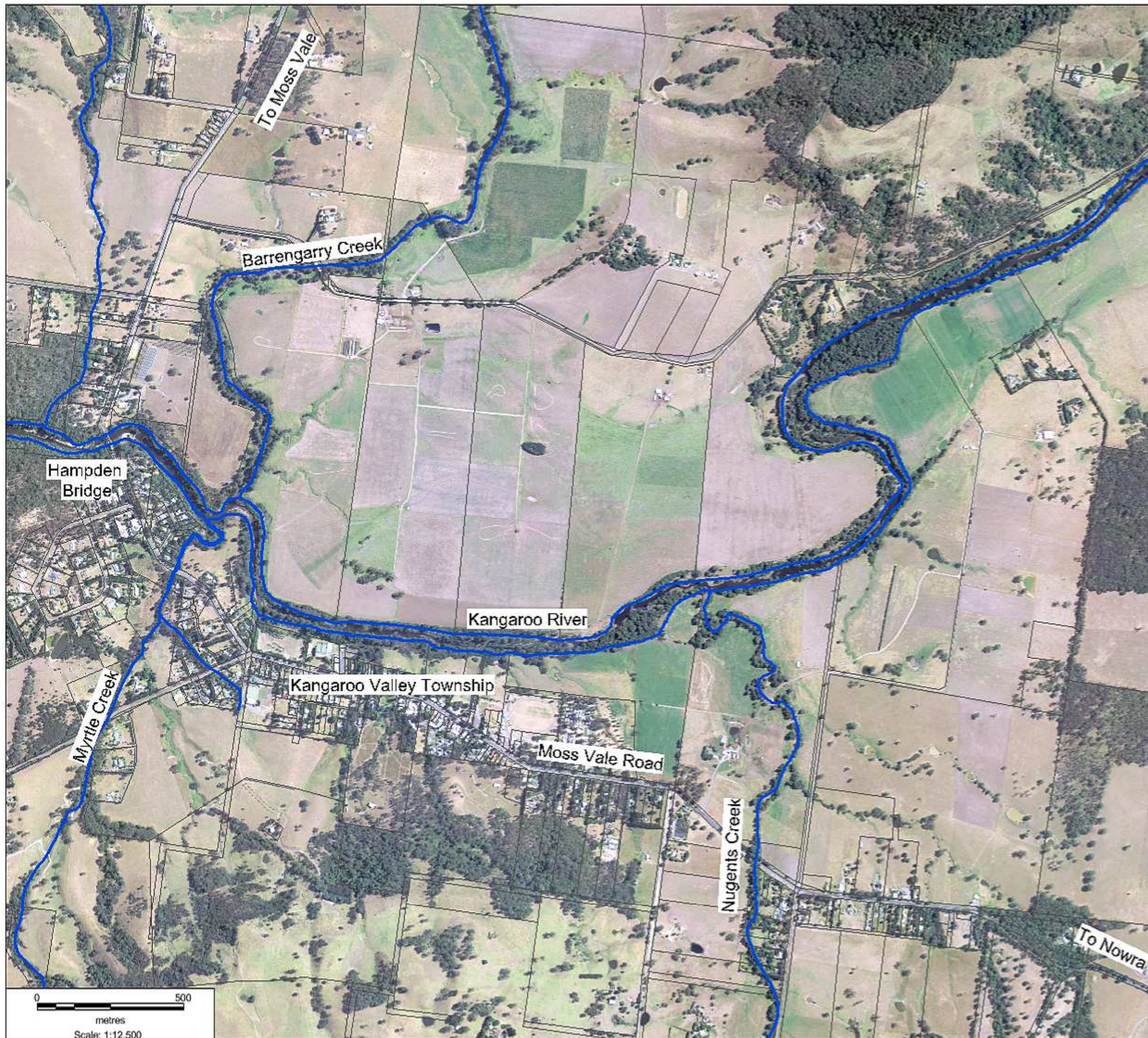
Kangaroo Valley FRMSP

-  Catchment Area
-  Study Area



Map Produced by Cardno NSW/ACT Pty Ltd
 Date: 10 / 08 / 2014
 Project: Kangaroo Valley FRMSP
 Coordinate System: MGA Zone 56

Figure 2-2
Study Area Features
Kangaroo Valley FRMSP



□ Cadastre
— Waterways



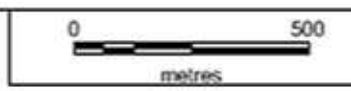
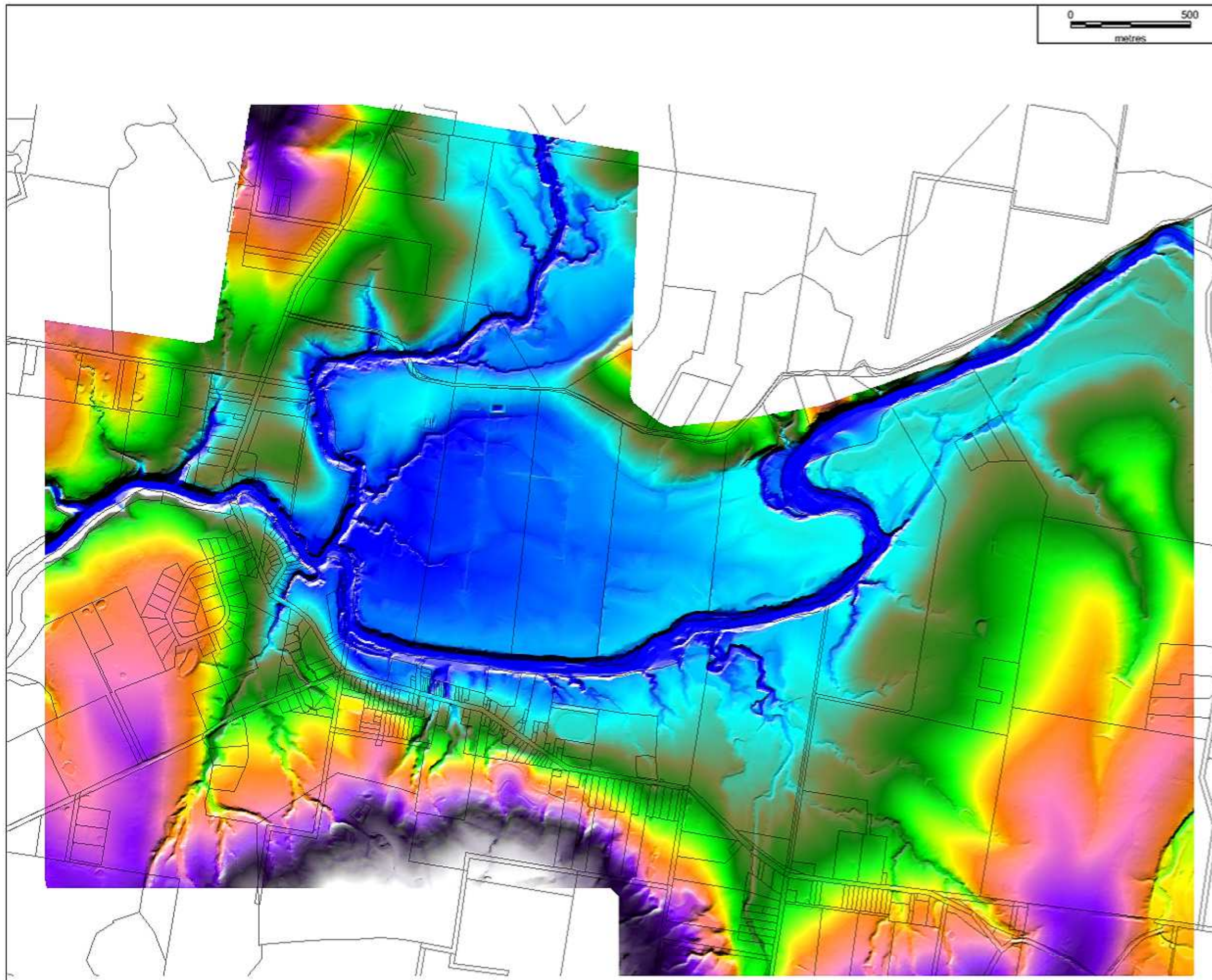


Figure 3-1

Terrain Elevation

Kangaroo Valley FRMSP

 Cadastre

Elevation (mAHd)



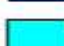
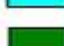

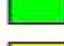






-  60
-  65
-  70
-  75
-  80
-  85
-  90
-  95
-  100
-  105
-  110
-  115





Figure 3-2

Drainage Data

Kangaroo Valley FRMSP






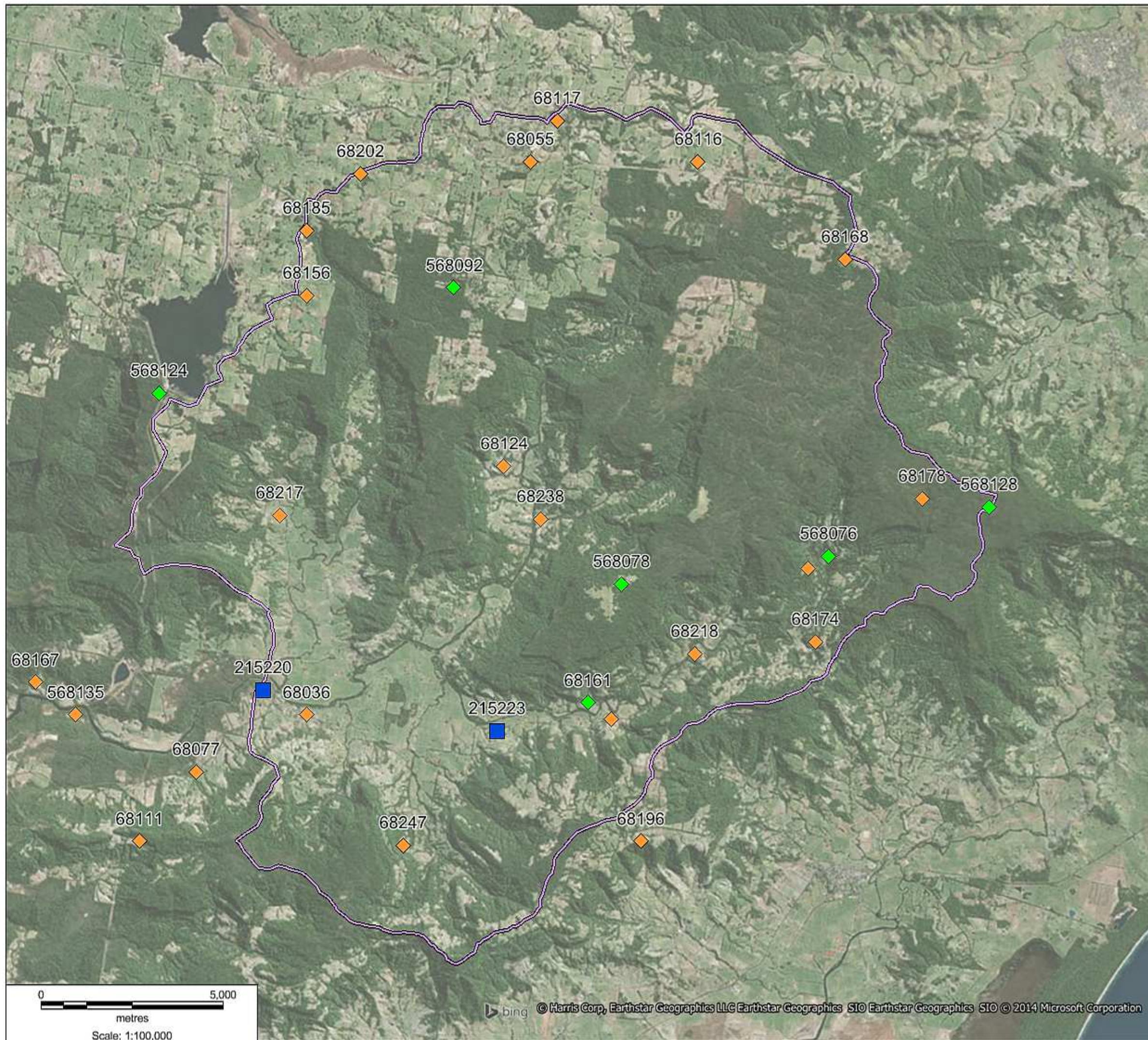
-  Cadastre
-  Pipes
-  Open Drains
-  Culverts (Surveyed)
-  Pits







Figure 3-3

Gauge Locations

Kangaroo Valley FRMSP



-  Catchment Area
-  Flow Station
-  Daily Rainfall Station
-  Pluviograph Station



Map Produced by Cardno NSW/ACT Pty Ltd
Date: 10 / 08 / 2014
Project: Kangaroo Valley FRMSP
Coordinate System: MGA Zone 56

Figure 5-1

1% AEP True Flood Hazard

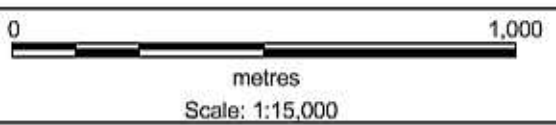
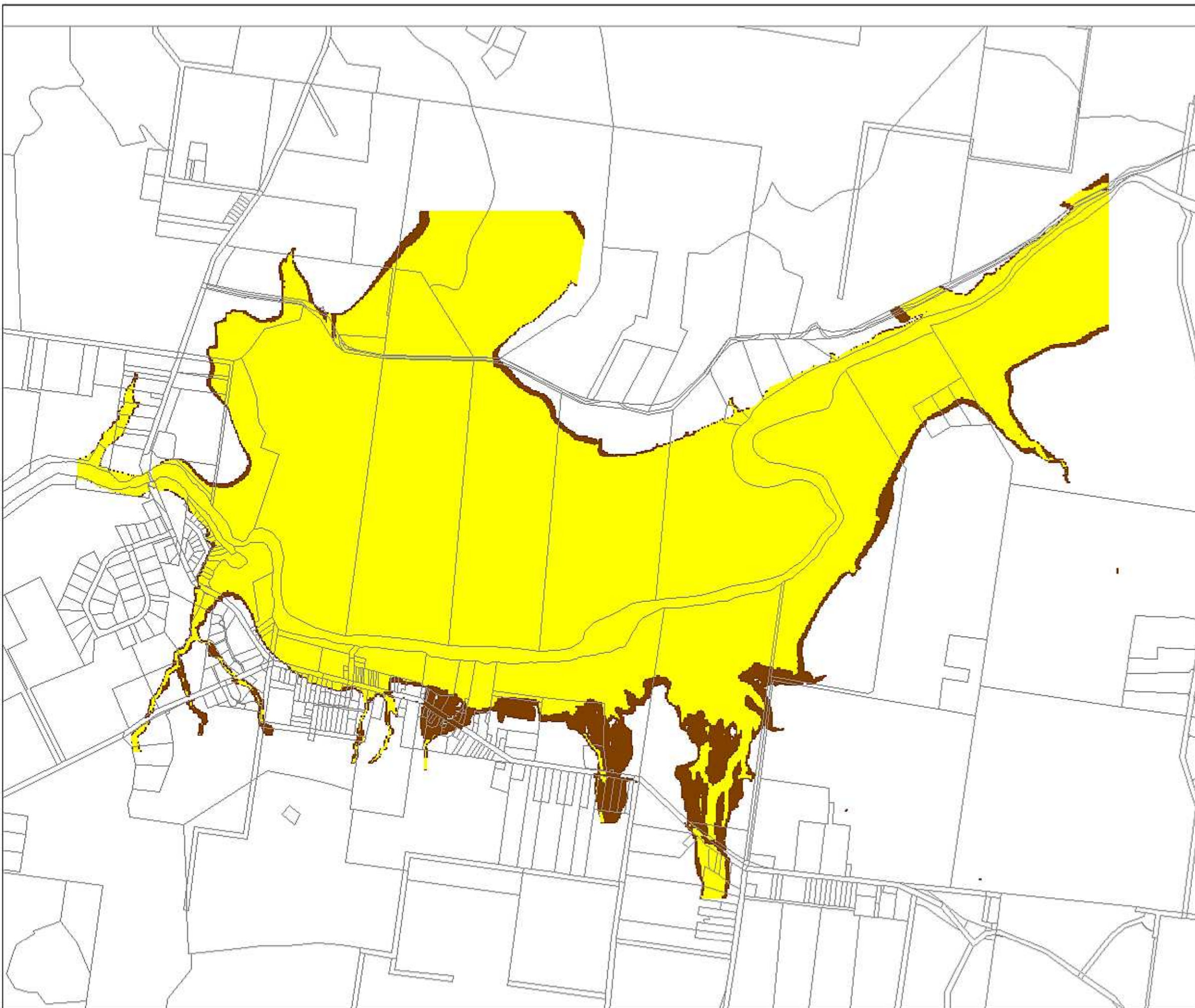
Kangaroo Valley FRMSP

Cadastre

Flood Hazard

High

Low

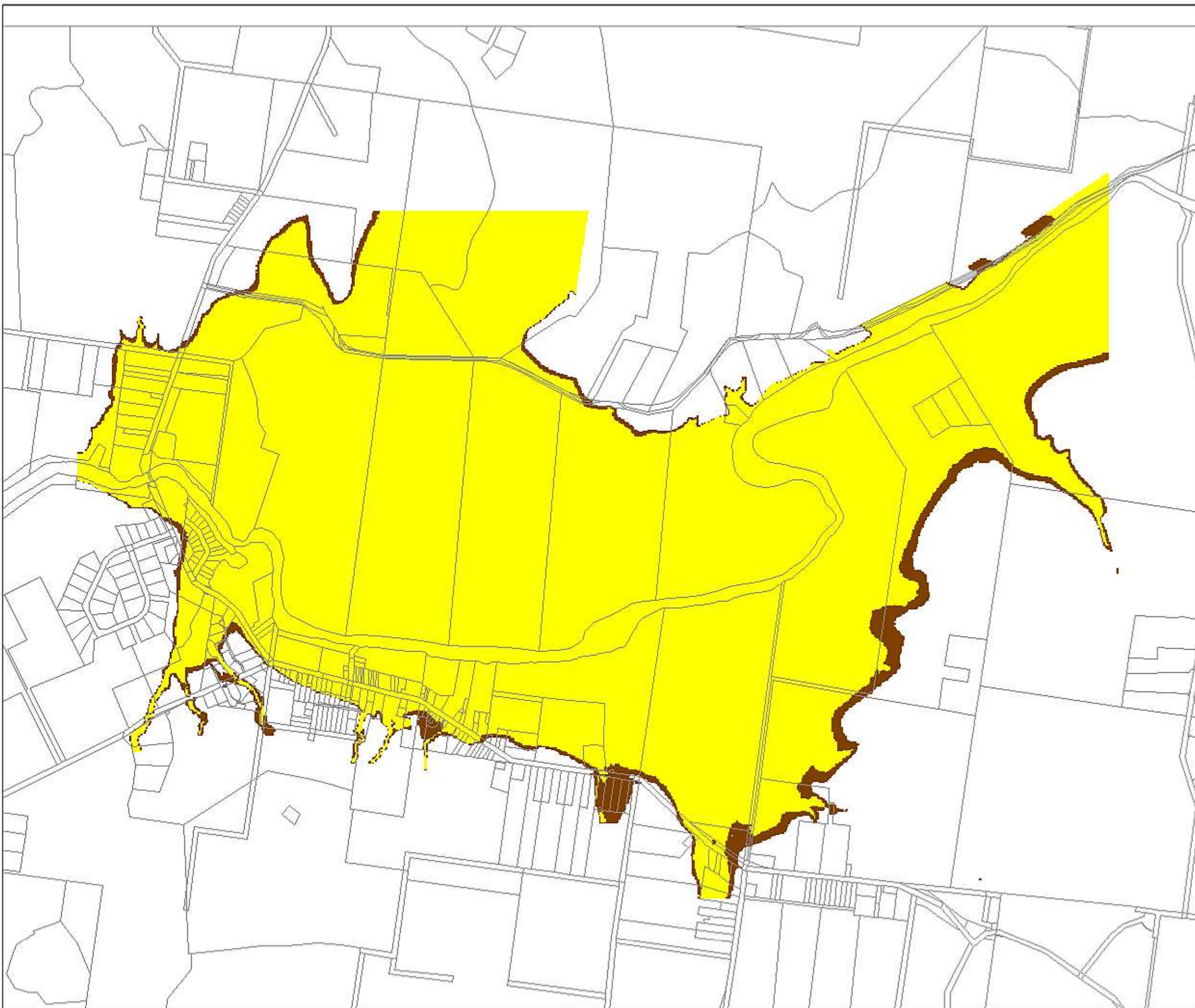



Map Produced by Cardno NSW/ACT Pty Ltd
Date: 16 / 09 / 2013
Project: Kangaroo Valley FRMSP
Coordinate System: MGA Zone 56

Figure 5-2

PMF True Flood Hazard

Kangaroo Valley FRMSP

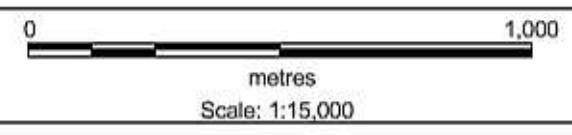


 Cadastre

Flood Hazard

 High

 Low

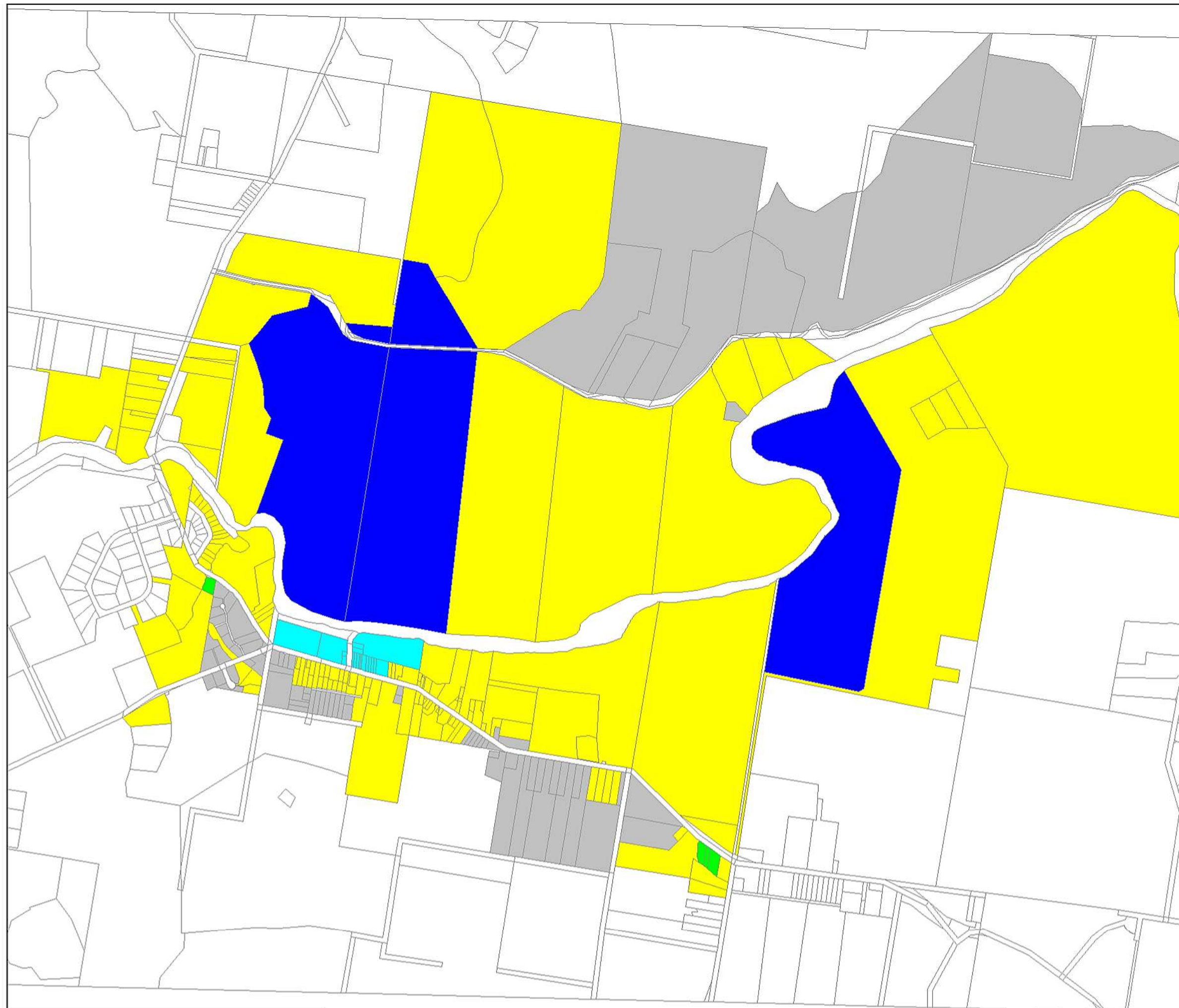








Map Produced by Cardno NSW/ACT Pty Ltd
Date: 16 / 09 / 2013
Project: Kangaroo Valley FRMSP
Coordinate System: MGA Zone 56

Figure 5-3

Emergency Response
Classification - 100yr

Kangaroo Valley FRMSP



-  Cadastre
-  Low Flood Island
-  Low Trapped Perimeter
-  Overland Escape Route
-  Rising Road Access
-  Indirectly Affected Area



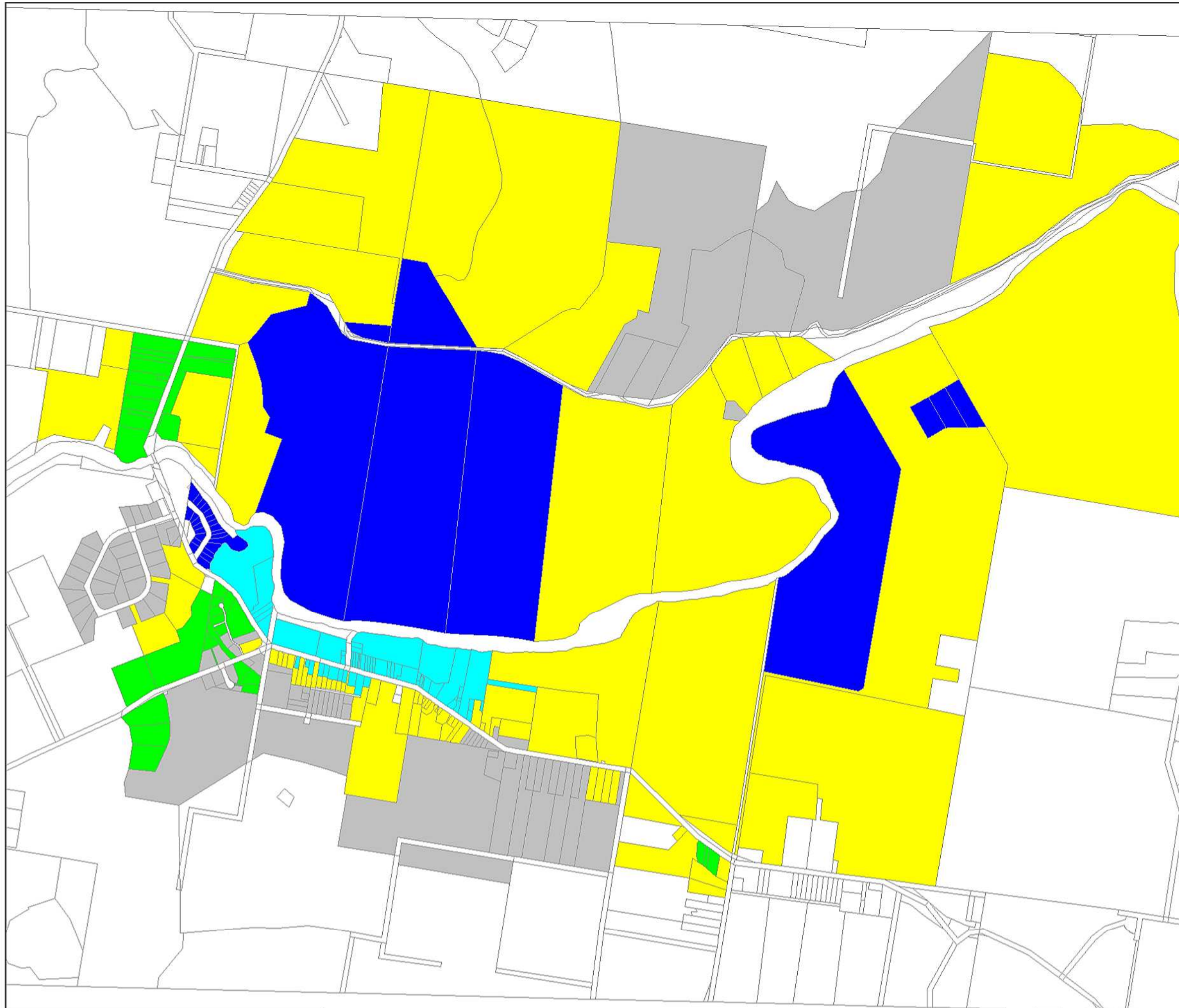
Map Produced by Cardno NSWACT Pty Ltd
Date: 21 / 09 / 2013
Project: Kangaroo Valley FRMSP
Coordinate System: MGA Zone 56

0 1,000
metres
Scale: 1:15,010

Figure 5-4

Emergency Response
Classification - PMF

Kangaroo Valley FRMSP



- Cadastre
- Low Flood Island
- Low Trapped Perimeter
- Overland Escape Route
- Rising Road Access
- Indirectly Affected Area



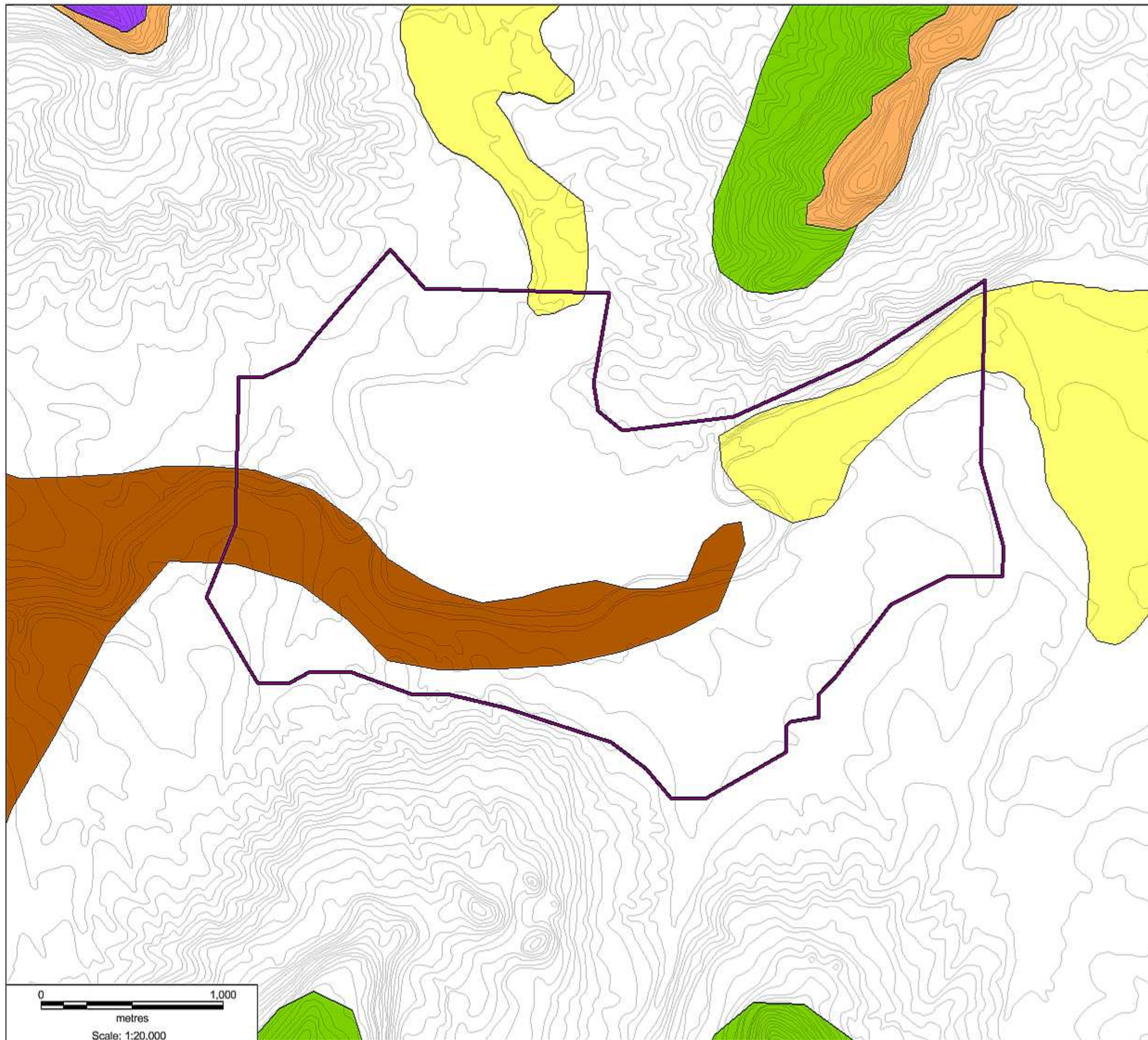
Map Produced by Cardno NSWACT Pty Ltd
Date: 21 / 09 / 2015
Project: Kangaroo Valley FRMSP
Coordinate System: MGA Zone 56

0 1,000
metres
Scale: 1:15,010

Figure 8-1

Geology

Kangaroo Valley FRMSP



- Contours (10m)
- Shoalhaven Group
- Alluvium
- Nowra Sandstone
- Broughton Formation
- Illawarra Coal Measures
- Hawkesbury Sandstone
- Study Area

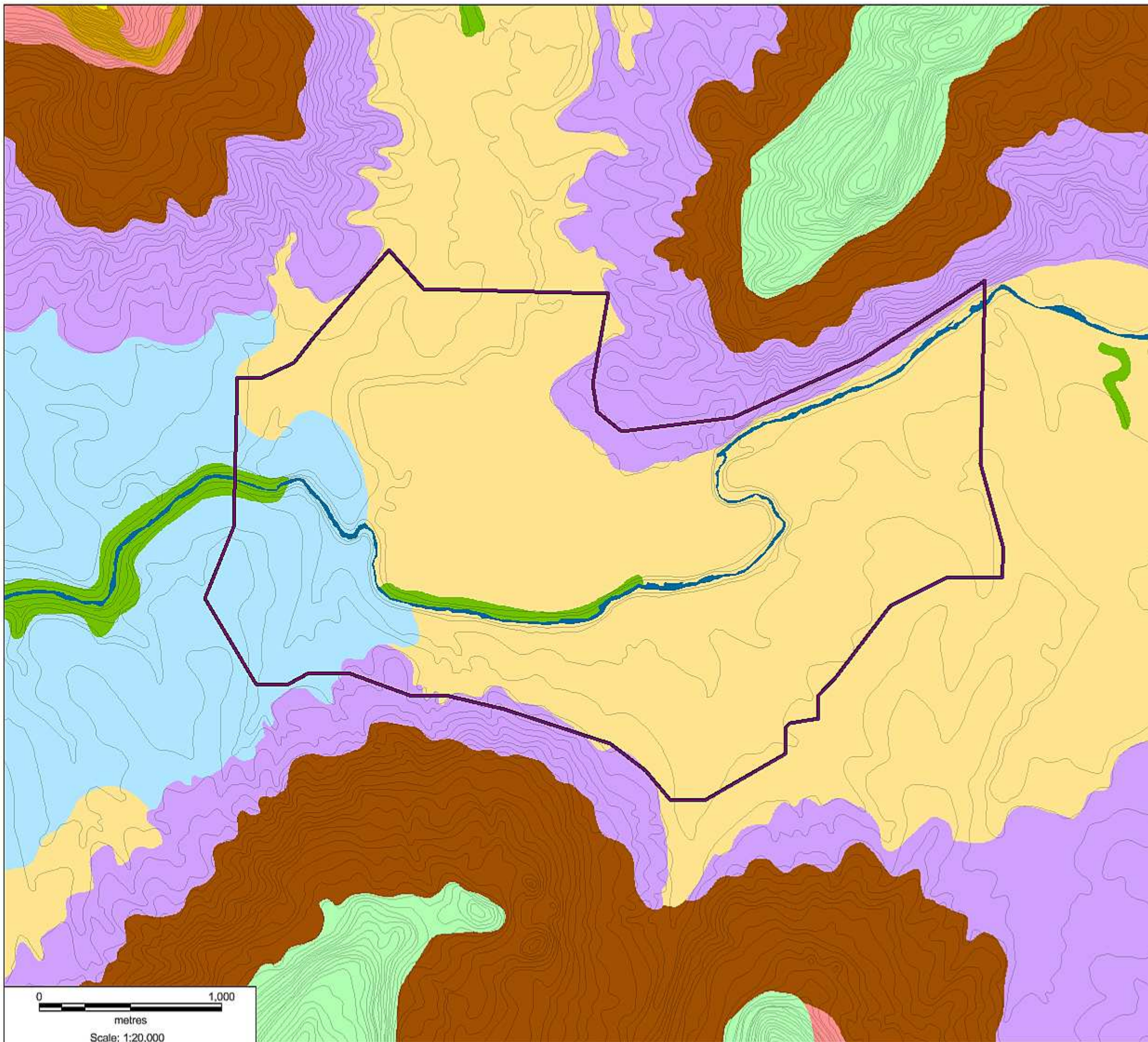


Map Produced by Cardno NSW/ACT Pty Ltd
Date: 10 / 08 / 2014
Project: Kangaroo Valley FRMSP
Coordinate System: MGA Zone 56

Figure 8-2

Soil Landscape

Kangaroo Valley FRMSP



- Contours (10m)
- Ellerslie
- Barrengarry
- Wattamolla Road
- Cambewarra
- Warragamba
- Hawkesbury
- Nowra
- Illawarra Escarpment
- Pulpit Rock
- Water
- Study Area

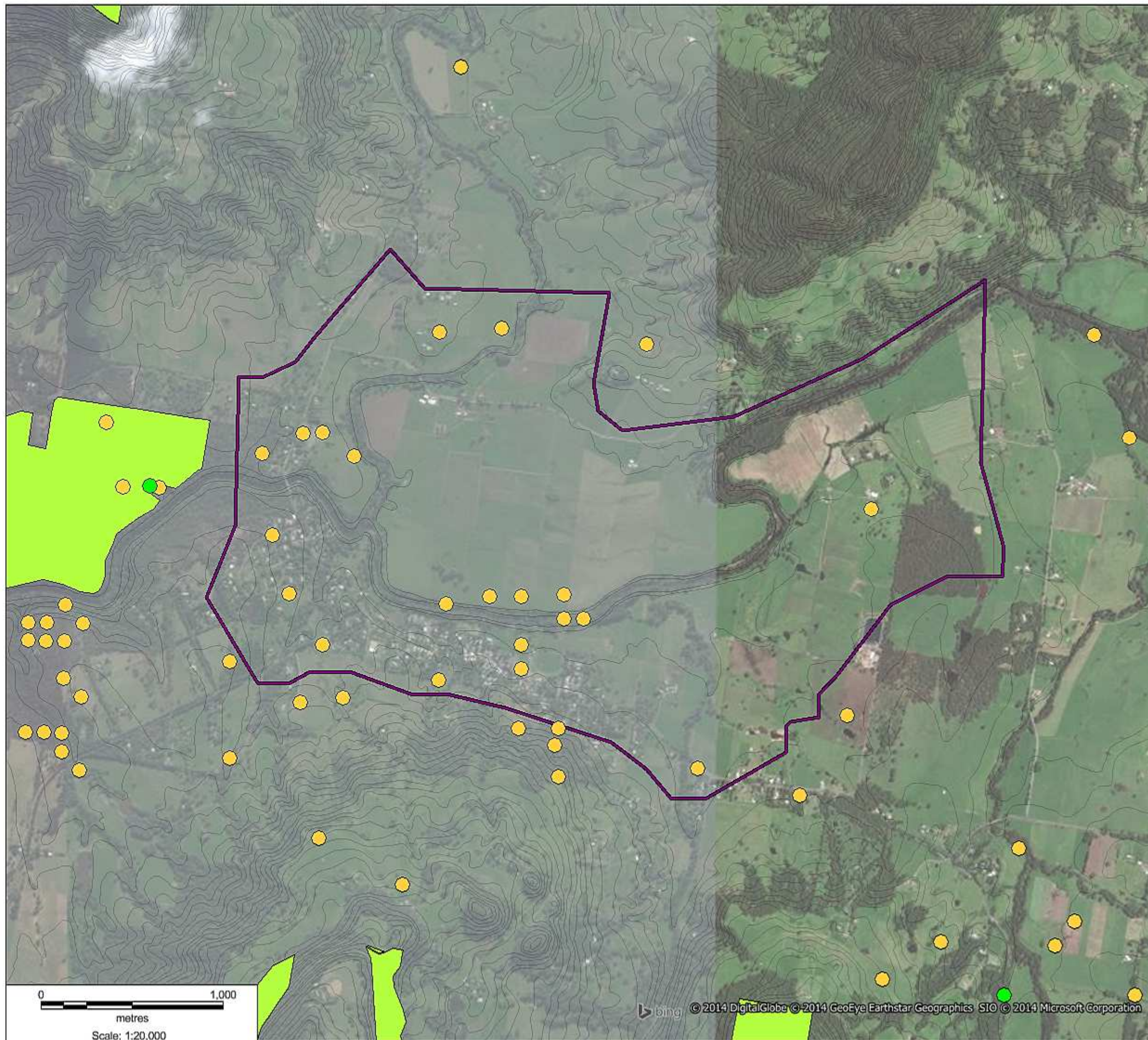


Map Produced by Cardno NSW/ACT Pty Ltd
Date: 10 / 08 / 2014
Project: Kangaroo Valley FRMSP
Coordinate System: MGA Zone 56

Figure 8-3

Flora and Fauna

Kangaroo Valley FRMSP



- Contours (10m)
- Fauna Records
- Flora Records
- NPWS Reserve
- Study Area



0 1,000
metres
Scale: 1:20,000

bing © 2014 DigitalGlobe © 2014 GeoEye Earthstar Geographics SIO © 2014 Microsoft Corporation

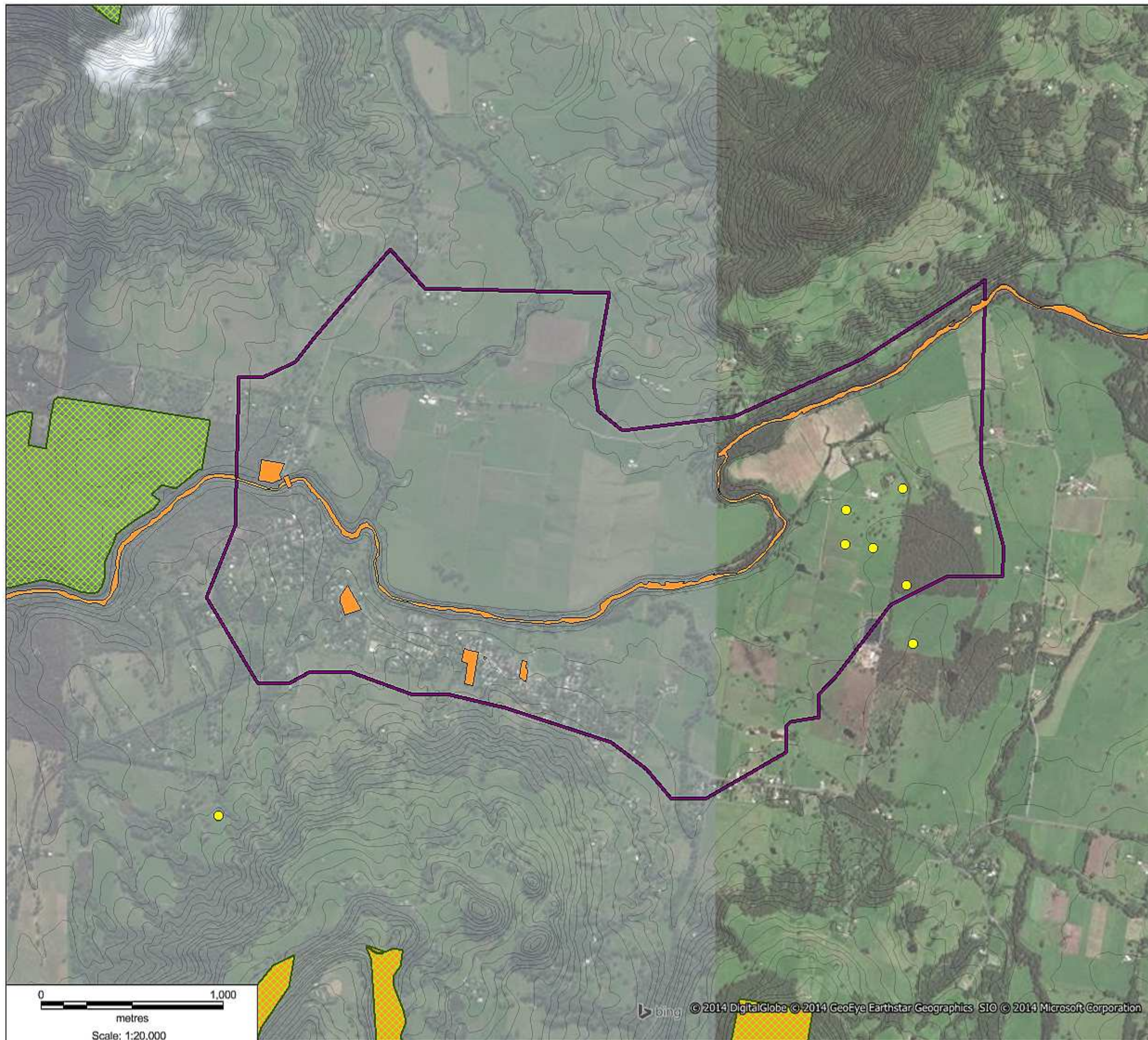
Map Produced by Cardno NSW/ACT Pty Ltd
Date: 10 / 08 / 2014
Project: Kangaroo Valley FRMSP
Coordinate System: MGA Zone 56

Figure 8-4

Heritage

Kangaroo Valley FRMSP

- Contours (10m)
- Aboriginal Heritage
- Non-Aboriginal Heritage
- ▨ NPWS Reserve
- ▭ Study Area

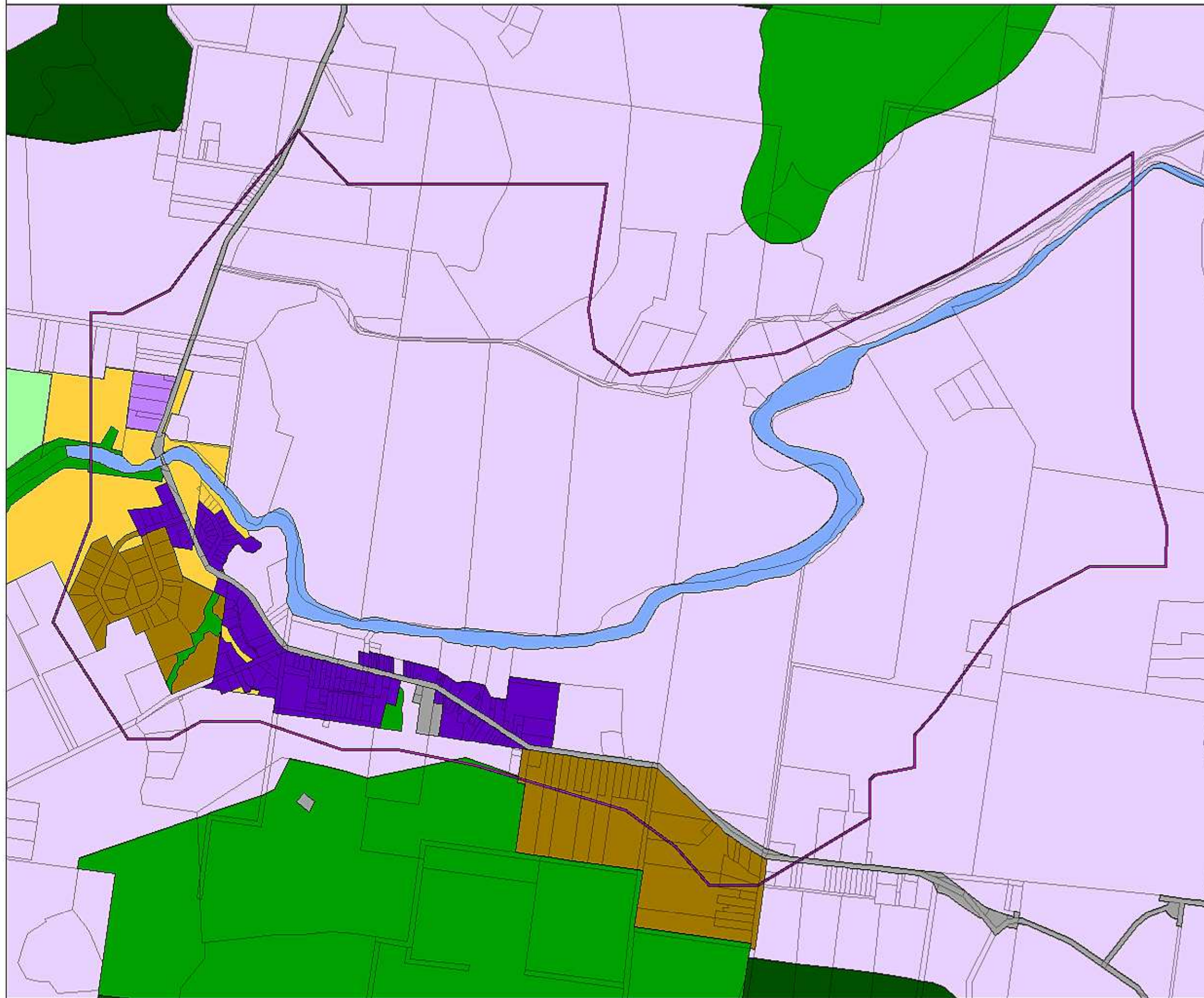














Map Produced by Cardno NSW/ACT Pty Ltd
Date: 10 / 08 / 2014
Project: Kangaroo Valley FRMSP
Coordinate System: MGA Zone 56

Figure 9-1

Catchment Land Use Zones

Kangaroo Valley FRMSP



-  Cadastre
-  Study Area
-  E1 National Parks
-  E2 Env. Conservation
-  E3 Env. Management
-  R5 Large Lot Residential
-  RE1 Public Recreation
-  RU1 Primary Production
-  RU2 Rural Landscape
-  RU5 Village
-  SP2 Special Infrastructure
-  W1 Natural Waterways



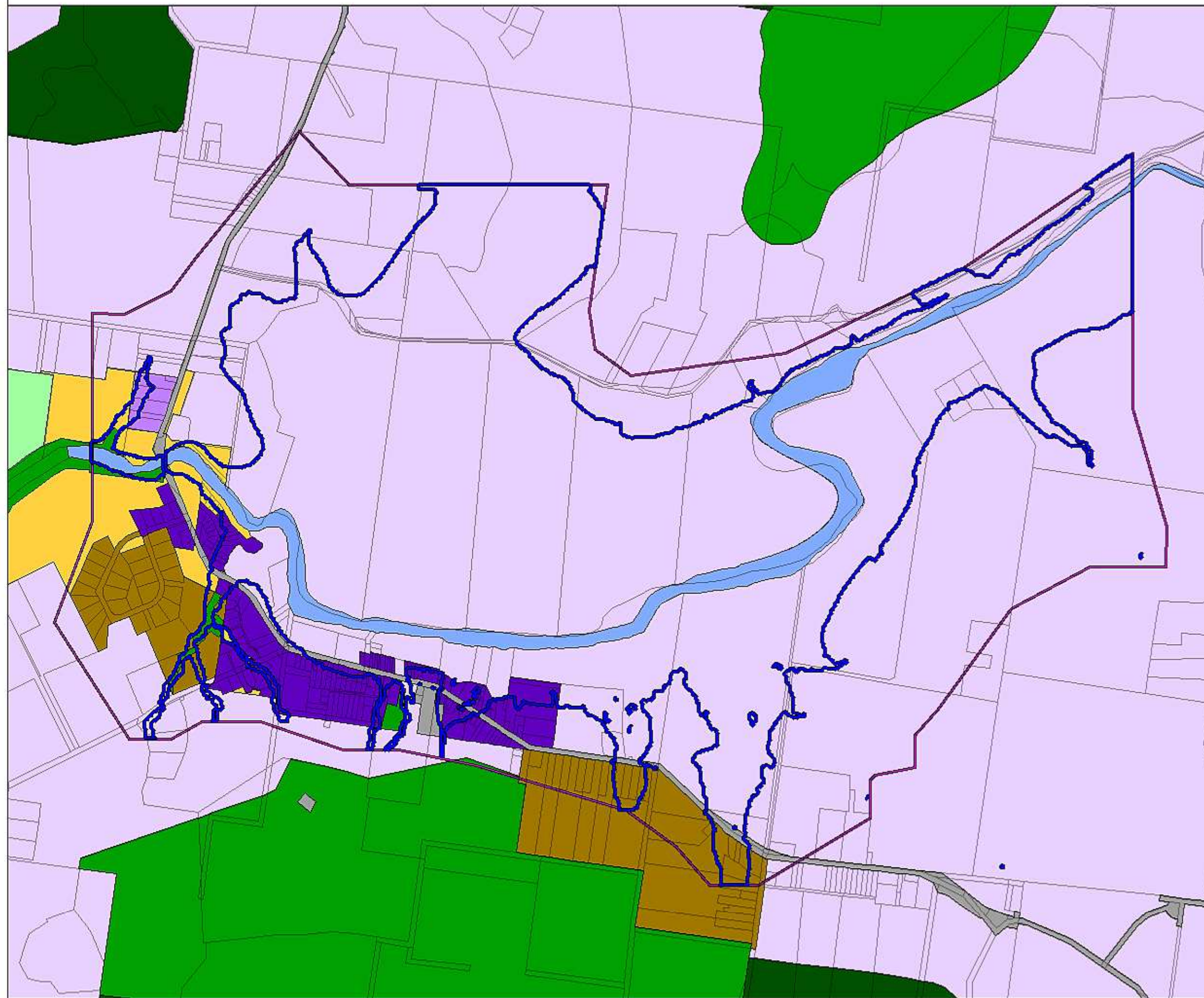
0 1,000
metres
Scale: 1:15,000

Map Produced by Cardno NSW/ACT Pty Ltd
Date: 10 / 08 / 2014
Project: Kangaroo Valley FRMSP
Coordinate System: MGA Zone 56

Figure 9-2

Land Use Zones
Affected by Flooding

Kangaroo Valley FRMSP



- Cadastre
- Study Area
- E1 National Parks
- E2 Env. Conservation
- E3 Env. Management
- R5 Large Lot Residential
- RE1 Public Recreation
- RU1 Primary Production
- RU2 Rural Landscape
- RU5 Village
- SP2 Special Infrastructure
- W1 Natural Waterways
- 1% AEP Extent



0 1,000
metres
Scale: 1:15,000

Map Produced by Cardno NSW/ACT Pty Ltd
Date: 10 / 08 / 2014
Project: Kangaroo Valley FRMSP
Coordinate System: MGA Zone 56