

SHOALHAVEN CITY COUNCIL

BUSINESS & EMPLOYMENT DEVELOPMENT COMMITTEE

to be held on Monday 15 February 2016
commencing at 4.00pm

City Administrative Centre
Bridge Road
NOWRA NSW 2541

9 February 2016

Dear Member

NOTICE OF MEETING

You are hereby requested to attend a meeting of the Business and Employment Development Committee to be held on **Monday 15 February 2016** commencing at **4.00pm** in the City Administrative Centre, Bridge Road, Nowra in Jervis Bay Rooms 1 & 3 for consideration of the following business.

R D Pigg
General Manager

Please note that refreshments will not be supplied at this meeting

BUSINESS OF MEETING

1. Apologies
2. Minutes of Previous Meeting
3. Declarations of Interest
4. Report of the General Manager
 Planning and Development Services
5. Community Agenda Items
6. Addendum Reports
7. General Business

MEMBERSHIP – Quorum (6)

John Lamont - Chairperson
Clr Gash – Mayor
All Councillors
General Manager or nominee
Gareth Ward MP (or nominee Tony Emery)
Shelley Hancock MP (or nominee)
Ann Sudmalis (or nominee John Anderson)
Robbie Collins – University of Wollongong
Megan Cleary – NSW Trade & Investment
Tim Montgomery – Unions Shoalhaven
David Goodman – SBC
Jacob Williams – Youth Advisory Committee

Angela Byron – Secondary Schools
Arthur Rorris – South Coast Labour Council
Fiona Hatcher – RDAFSC
Col Waller – Community Member
Chris Warren – Community Member
Gerry Moore – Habitat Personnel
Youth Advisory Committee - TBA
Paul Goodwin – NSW TAFE
Lexie Meyer – Community Representative
Anthony Body – Premiers Dept (observer)
Catherine Shields – Shoalhaven Tourism
Advisory Group

Cell Phones: Council's Code of Meeting Practice states that "All cell phones are to be turned off for the duration of the meeting".

Purpose:

- To assist in the implementation of the Economic Development Strategy and monitor and report on performance.
- Support the expansion of industry activities within the Shoalhaven, across all sectors.
- Encourage the location of new industries in the region which will lead to an increase in the number of employment opportunities for the residents of the region
- Grow the socio economic base of the Shoalhaven.
- Examine and review employment development strategies and report on initiatives to carry their strategies forward.

**MINUTES OF THE BUSINESS AND EMPLOYMENT DEVELOPMENT COMMITTEE MEETING
HELD ON THURSDAY 26 NOVEMBER 2015 IN COMMITTEE ROOMS 1, 2 & 3, CITY
ADMINISTRATIVE CENTRE, BRIDGE ROAD, NOWRA COMMENCING AT 4.04PM.**

The following members were present:

John Lamont – Chairperson
Clr Baptist – left 5.06pm
Clr Tribe
Clr Kitchener
Clr Kearny
Clr White
Russ Pigg – General Manager
Paul Goodwin
Megan Cleary
Colin Waller
Tony Emery
Brendan Goddard – left 5.04pm
Robbie Collins
Lexie Meyer

Others Present:

Tim Fletcher – Director Planning and Development
Greg Pullen – Economic Development Manager
Marianne Jones – Economic Development Officer
Cathy Bern – Development Services Manager
Michael Tyler – NBN Co.

Apologies:

Apologies were received from Angela Byron, Clr Gash, David Goodman, Donna Payne, Fiona Hatcher, Clr Wells

1. Minutes of Previous Meeting

MOTION:

Moved: Clr Tribe / Second: Clr White

RESOLVED that the Minutes of the meeting of the Business and Employment Development Committee, held on Thursday 27 August 2015, be confirmed.

Note: That Colin Waller was an apology for the last meeting.

Note: The Committee welcomed the new members being:

- Colin Waller – Shoalhaven Heads Chamber of Commerce
- Brendan Goddard – Shoalhaven Business Chamber
- Tony Emery – Gareth Ward MP

Business arising from Previous Minutes:

Greg Pullen advised that in relation to the RMS truck stop – a meeting is to be held in Wollongong on 1/12/15 at the Adina Hotel, all Committee members are welcome to attend. There has been a request to delay the meeting pending briefing papers.

The establishment of the Shoal Hub has been opened in the Arts Centre.

The Rates review for CBD businesses – 1st meeting has been held with KPMG and 5 community members from various business chambers last Tuesday – to set the scope of the issues brought up by the community.

GENERAL MANAGER

2. NBN Co update File 44602E

Note: Michael Tyler provided a presentation to the Committee.

MOTION: Moved: by consent

RESOLVED that the report by NBN Co be received for information.

CARRIED

3. Shoalhaven Business Chamber File 36320E, 38821E

Brought forward

MOTION: Moved: Megan Cleary / Second: Tony Emery

RESOLVED that the report from the Shoalhaven Business Chamber be received for information.

CARRIED

Note: Brendan Goddard updated the Committee and advised that in relation to the Business Chamber they are promoting more unity between the Committee and Businesses, better communication, the new members are bringing expert knowledge to the Chamber.

4. NSW State Priorities File 38821E

MOTION: Moved: Clr Kearney / Second: Clr Baptist

RESOLVED that the report on NSW State Priorities be received for information.

CARRIED

Note: Megan Cleary updated the Committee and advised that the NSW Premiers and State Priorities have been released and are publicly available on the website. Handouts were provided to the members present.

5. School to Work Transition Programs File 9809E

MOTION: Moved: Lexie Meyer / Second: Clr Kearney

RESOLVED that the report on the School to Work Transition Programs be received for information.

CARRIED

The Committee thanked Robbie, Marianne and Greg, Lilianna Hutchinson from the Youth Advisory Committee, Russ Pigg and the Councillors who attended on the day. John Lamont will send a report which will be distributed with the Minutes.

Robbie Collins advised that the Shoalhaven Campus will be holding a Year 10 Careers Expo and the schools can decide whether to bring the year 11 and 12 students.

Note: Brendan Goddard and Clr Baptist left the meeting.

6. Shop Shoalhaven - a Pop Up Shop Project File 39962E

Note: Brendan Goddard and Clr Baptist were absent from the meeting.

MOTION: Moved: Robbie Collins / Second: Clr Kearney

RESOLVED that the report on Shop Shoalhaven be received for information.

CARRIED

7. Economic Development Manager - USA Business Development Report File 48687E/2

MOTION: Moved: Tony Emery / Second: Paul Goodwin

RESOLVED that the Economic Development Manager's report on the business development trip to the USA in October 2015 be received for information.

CARRIED

8. Blue BioTech Shoalhaven File 48687E/2

Dr Pia Winberg and Greg Pullen provided a presentation in relation to Bio Marine 2015, processes and products from trip to USA conferences.

MOTION: Moved: Clr Kearney / Second: Robbie Collins

RESOLVED that the report on Blue BioTech Shoalhaven be received for information.

CARRIED

PLANNING AND DEVELOPMENT

9. Development not Commenced in the Shoalhaven - Update File 38821E

MOTION: Moved: Tony Emery / Second: Paul Goodwin

RESOLVED that the report of the General Manager (Planning & Development Services) regarding the update on development not commenced in the Shoalhaven be received for information.

CARRIED

GENERAL MANAGER

10. TAFE Update File 38821E

MOTION: Moved: Robbie Collins / Second: Tony Emery

RESOLVED that the TAFE Update report be received for information.

CARRIED

Note: Paul Goodwin provided an update to the committee:

- Enrolment fees from last year have increased as a result of the IPART report.
- The mindset towards TAFE is changing.
- A change to the funding model has been introduced, including transitional funding from the Government.
- For 2015 there has been a 45% reduction in enrolments and also a decline in participation.
- Looking forward, they are trying to change the mindset of operation with new partnerships, delivering training for Defence and partner with Community Services.

ADDENDUM REPORT 1 – CORPORATE AND COMMUNITY SERVICES / GENERAL MANAGER

11. Renewal of the Committee File 38821E

MOTION: Moved: Consent

RESOLVED that the Committee receive the report for information.

CARRIED

GENERAL BUSINESS

12. Additional Item – UOW – Shoalhaven Campus – Graduation File 38821E

Robbie Collins advised that the UOW Shoalhaven Campus Graduation will be held on 3rd May 2016.

There being no further business, the meeting concluded, the time being 6.11pm.

John Lamont
CHAIRPERSON

REPORT OF GENERAL MANAGER
BUSINESS AND EMPLOYMENT DEVELOPMENT COMMITTEE
MONDAY, 15 FEBRUARY 2016

GENERAL MANAGER

1. ShoalHub

File 38821E

SECTION MANAGER: Greg Pullen

PURPOSE:

To provide an update on the operation of the ShoalHub.

RECOMMENDED that the report on the ShoalHub be received for information.

OPTIONS

1. The recommendation be accepted as written.
2. An alternative recommendation be proposed.

DETAILS

ShoalHub is a creative environment for business professionals to encourage idea generation and innovation within a culturally inspiring setting. John Lamont, will provide a verbal report on the outcomes of the ShoalHub which operates from within the Shoalhaven Arts Centre and was the subject of a report to the Committee in August 2015 regarding its launch.

The Shoalhub comprises:

- 4 Hot Desks, including printer, copier and associated office equipment
- Meeting Room for up to 40 people
- Meeting room can be used for collaborative work, networking and workshops.
- Court yard for informal meetings and networking
- Kitchen Area for Tea Coffee etc
- Easy access to CBD and parking
- Provide income to the Arts Centre
- Become a general focal point for small business to meet

FINANCIAL IMPLICATIONS:

The ShoalHub is a community initiative that has received a financial contribution from the Economic Development Office. The Shoalhaven Arts Centre is providing in-kind support through the provision of office space.

COMMUNITY ENGAGEMENT:

This report is to provide the Committee with an update on the ShoalHub.

2. Shop Shoalhaven - a Pop Up Shop Project

File 50010E, 39962E

SECTION MANAGER: Greg Pullen

PURPOSE:

This is to reacquaint the committee on the purpose behind the Shop Shoalhaven project.

RECOMMENDED that the report on Shop Shoalhaven be received for information.

OPTIONS

1. The recommendation be accepted as written.
2. An alternative recommendation be proposed.

DETAILS

The aim of the Shop Shoalhaven project was to develop a pop up shop project in the Shoalhaven that would be administered by local landlords and other interested parties.

The concept behind the project is to enliven areas by filling empty shop spaces with some sort of enterprise/activity. Local landlords and real estate agents such as Peter Russell, Glenn Rowan and Bob White have been pivotal to the roll out of this project in the Shoalhaven.

Currently there are no retail spaces available for this project. Both Peter Russell and Glenn Rowan have filled their retail spaces with commercial tenants. An excellent outcome.

The most recent Shop Shoalhaven project was located at 90 Worrigea Street Nowra. The space was licenced to Gallery Envelope. Gallery Envelope is a not-for-profit gallery in Nowra providing space for artists to exhibit their works. Due to the nature of the licence, a pop up licensee must vacate the premises within 6 months or commit to a commercial lease. Gallery Envelope has since vacated these premises and the premises are now rented out on a commercial basis to another party.

There will always be a rotation of tenants and shops. Some businesses need to grow or downsize, others are not viable at a particular location or rental expenditure. Shops vacant for a long period of time can influence both shoppers and business operators into thinking that the economy is slow and not performing. Tenants are always free to decide to whom they wish to pay rent to and how much. If this negotiation falls through, people move on, look elsewhere or seek other alternatives.

Council sees a vibrant commercial sector as reflective of the economic activity in the area. Trends will change, spending patterns will vary over time, these all add to the mix and the traditional commercial retail strip is changing. Shopping is now becoming an experience rather than just a necessity. As communities get more (or less) disposable income then the retail & service sectors need to change but the single economic truth still remains that the level of available disposable income to be spent does not grow dramatically unless there is a major change in the wealth generation chain, ie the sectors that “MAKE” things and add value into this particular economy. Sectors that bring income in from outside the area such as manufacturing, agriculture, tourism (a different sort of “make”), govt sector employment... are all keys to how a retail & service sector performs.

Those “value-adding” home based businesses can add to the local economy in a greater way by “coming out”, establishing a shopfront presence, testing the water and seeing if there is sufficient trade to pay all the bills, including rents. This is the philosophy behind Shop Shoalhaven to develop the next generation of retailers – in the creative arts, in personal services, in recreational services, in hospitality, in homewares.....

The question is, are these pop-up ventures looking to be able to pay rent at some stage in the future? This is what the Shop Shoalhaven is about, nurturing new longer term commercially viable businesses.

If a “business” chooses not to make money, then so be it, but they should not rely on landlords and Council to prop them up. Be commercial, charge commission, work out an affordable rental offer and see if a landlord will accept it?

Shop Shoalhaven is an economic development program rather than a community support activity and the ultimate goal of Shop Shoalhaven is to have all vacant spaces leased on a commercial basis. There still are a number of vacant retail spaces within Nowra. However these spaces are owned by landlords who do not wish to participate in Shop Shoalhaven which is their prerogative.

Shop Shoalhaven has been set up in such a way as that it can be activated at any point in time meaning that any landlord can participate should they so desire.

FINANCIAL IMPLICATIONS:

There are no financial implications for Council.

COMMUNITY ENGAGEMENT:

This report to the Shoalhaven Business & Employment Development Committee is part of the community consultative process and its purpose is to inform.

SECTION MANAGER: Greg Pullen

PURPOSE:

To report on the activities of the Shoalhaven Business Chamber operations under the Memorandum of Understanding with Council regarding the Shoalhaven Business Awards and a business development program.

To consider the continuation of this agreement.

RECOMMENDED that the Business and Employment Development Committee recommend that Council:

- a) **enters into a new Memorandum of Understanding with the Shoalhaven Business Chamber for the three financial years being 2016/2017, 2017/2018 and 2018/2019**
 - i) **for the delivery of the Shoalhaven Business Awards and**
 - ii) **a business events/training program.**
- b) **allocate \$40,000 in the Economic Development budget for each financial year for the duration of the Memorandum of Understanding.**

OPTIONS

- 1. The recommendation be accepted as written.
- 2. An alternative recommendation be proposed.

DETAILS

The Shoalhaven Business Awards have been held annually commencing in 1985. The awards are a celebration of our local businesses and their contribution to the economy of the Shoalhaven. Originally the Shoalhaven Business Awards were organised by the Economic Development Office of Shoalhaven City Council.

In 2010, the Shoalhaven Business Chamber (SBC) applied to Council to deliver the annual Shoalhaven Business Awards and a Shoalhaven on Show Business Expo. The SBC noted that these activities are important community events that recognise business development, business achievement and business prosperity within the Shoalhaven region.

Council agreed to this proposal and the SBC have been delivering successful annual high quality Shoalhaven Business Awards since 2010.

The Current MoU which covers this relationship between Shoalhaven City Council and the Shoalhaven Business Chamber expires at the end of June 2016.

In early 2016 the Shoalhaven Business Chamber approached the Economic Development Office to review, revise and renew the Memorandum of Understanding. The revision of the Memorandum of Understanding formalises the arrangement for the financial years of 2016/2017, 2017/2018 and 2018/2019.

In previous MoU's with the SBC a key deliverable was to hold a Shoalhaven on Show expo. The aim of the Expo was to provide local business with an opportunity to promote their goods and services to the wider public. The Expo was also intended to provide an opportunity for business networking. Shoalhaven on Show Business Expo was held for a number of years and then evolved, with Councils agreement, into a business development seminar – Energise Shoalhaven.

As part of the latest review it was agreed between the SBC and Council that the larger events were not as successful as originally planned and that it did not fulfil local business needs. Instead, the SBC intends to run a number of smaller targeted events throughout the year that will support and educate local businesses and provide a number of networking opportunities. These events are open to all businesses registered in the Shoalhaven and are not for the exclusive attendance of SBC members.

Events include, but are not limited to, training courses either accredited or non-accredited and/or networking opportunities such as *Women in Business* quarterly luncheons, *Lunch and Learn* series, *Business Breakfast Bites*. SBC and Economic Development Office will monitor the success or otherwise of these events and the event/training schedule will be adjusted as needed. This is to ensure that both the SBC and Economic Development Office are open and responsive to changes in the economic climate and to the needs of Shoalhaven businesses.

Contained within the MoU are a number of key deliverables by the SBC being to:

- I. Manage and organise the Shoalhaven Business Awards in or around August/September each calendar year so that:
 - i. Council is given recognition commensurate with being a major sponsor of the Awards.
 - ii. The Awards will be held annually at the Shoalhaven Entertainment Centre.
 - iii. Sponsors and Nominees will be recognised in an eight to ten page feature in the local print media in both Nowra and Ulladulla.
 - iv. Sponsors and Nominees will be recognised at the Awards presentation night.
 - v. Council is given a report at the completion of the Awards outlining the process, deliverables and outcomes.
- II. Organise a series of Business Development/support events during each year to support and educate businesses in the Shoalhaven. The events, as submitted by SBC, will include, without limitation:
 - i. To establish a Women in Business networking group in the Shoalhaven. It is proposed that the group hold quarterly lunches with guest speakers on topics more specific to women in business.
 - ii. To establish and run a "Lunch and Learn" series, where SBC will organise 6 lunches each year hosted by a profession (ie Accountants, Solicitors, Bankers, Insurance

Brokers) that provides a workshop style session on various business related topics that will assist members in their day to day business operations.

- iii. To establish a “Business Breakfast Bites” series, where the SBC will organise and host 6 breakfasts each year, where a speaker will provide educational information around business assistance and advice. This could include State and Federal Government agency updates, information from Council, or specific sponsored events. This will allow members to stay connected with what is happening and also provides them with an opportunity to network and share business tips and strategies.

These arrangements are satisfactory to both the Shoalhaven Business Chamber and the Economic Development Office and tick key deliverables by both organisations.

FINANCIAL IMPLICATIONS:

The funding will be administered via the Economic Development Office of Council. The annual amount provided for within Council’s budget will be as follows:

Shoalhaven Business Awards	\$23,000 (GST exclusive)
Business development/support events	\$17,000 (GST exclusive)

This represent an annual increase of \$5,000 over the allocation under the previous MoU.

COMMUNITY ENGAGEMENT:

This report to the Shoalhaven Business & Employment Development Committee is part of the community consultative process and its purpose is to inform.

4. National Stronger Regions

File 49858E

SECTION MANAGER: Greg Pullen

PURPOSE:

To update the Committee on the outcomes of Round 2 funding and the guidelines for the upcoming Round 3

RECOMMENDED that the report on National Stronger Regions be received for information.

OPTIONS

1. The recommendation be accepted as written.
2. An alternative recommendation be proposed.

DETAILS

The National Stronger Regions Fund (NSRF) is an Australian Government program commenced in 2015 and provides funding of \$1 billion over 5 years to fund priority infrastructure in regional communities.

Grants must be between \$20,000 and \$10 million and grants must be matched in cash on a dollar for dollar basis. This partner funding must be confirmed at the time of lodging the application. Applications without confirmed partner funding are automatically rejected from the assessment process.

Local government and incorporated not-for-profit organisations are eligible to apply.

In Round 1 the Commonwealth contributed \$212,253,603 in funding toward projects totaling \$642,010,425. There were no projects in the Shoalhaven that received funding.

In Round 2 the Commonwealth contributed \$293,434,371 in funding toward projects totaling \$841,925,861. There were two successful applications from the Shoalhaven.

Motorcycling NSW will receive \$9,532,500 toward a total project cost of \$19,065,000. The Shoalhaven Motorsports Complex project is to develop an integrated facility that enables diverse motorsports uses (both cars and motorcycles), as well as a range of community based sporting and other events, all connected to a dedicated business and industry park that supports the facility and leverage's further job opportunities.

Shoalhaven City Council, in partnership with the University of Wollongong, will receive \$1,229,554 in funding toward the construction of a mental health facility (total project cost \$2,459,110). The Shoalhaven City Council and University's \$2.45m "MIND the GaP" facility will be a purpose designed building where education, translational research and service provision can intersect through collaborations with Lifeline, Coordinaire, Illawarra Shoalhaven Health District and Noah's Shoalhaven.

Round 3 of the NSRF opened for applications on Friday 15 January 2016 and closes 5pm on Tuesday 15 March 2016.

More information about the NSRF can be found here
<http://investment.infrastructure.gov.au/funding/NSRF/>

RDA Far South Coast is able to provide advice about the NSRF to potential applicants.

FINANCIAL IMPLICATIONS:

The "MIND the GaP" project will be fully funded by the University of Wollongong and the NSRF. Shoalhaven City Council will provide minimal administration support in the form of communication with the Commonwealth – progress reports and project acquittal.

COMMUNITY ENGAGEMENT:

This report to the Shoalhaven Business & Employment Development Committee is part of the community consultative process and its purpose is to inform.

SECTION MANAGER: Greg Pullen.

PURPOSE:

To update the Committee on some of the major infrastructure projects for which Council has obtained Grant funding.

RECOMMENDED that the report by the Economic Development Manager on Major Infrastructure Projects be received for information.

OPTIONS

1. The recommendation be accepted as written.
2. An alternative recommendation be proposed.

DETAILS

Several road projects of interest to the Committee are currently under delivery and others are under consideration by government agencies. A brief update on each will follow:

Flinders Rd intersection realignment

The relocation of the intersection of Flinders Rd and the Princes Hwy at Sth Nowra was funded under the Restart Illawarra initiative administered through Infrastructure NSW.

Work has commenced on the project in late 2015 with the road formation and sub-base material having been formed. The workcrews moved away from the site to another Council project pending relocation of some utility services (now completed) and gaining final design approvals for the connection into the roundabout at Browns Rd.

Works are scheduled to recommence on the project in May and be completed in the second half of the year.

Flinders Rd upgrade

The upgrading of the South Nowra Heavy Vehicle Freight Corridor - Flinders Rd between Albatross Rd and the bridge over Nowra Creek has been funded through three grant programs:

- Australian Government's Heavy Vehicle Safety Productivity Program
- NSW Fixing Country Roads
- Black Spot Funding

The road project, in conjunction with intersection upgrades at Albatross Rd, Norfolk Ave, Cumberland Ave, Angus Ave and Bellevue St is well advanced at the design stage and work tender packages will be released in the next quarter of 2016, if not before. Physical works should commence before June at the Albatross Rd intersection where a major reconfiguration will occur.

It is expected that the construction program will take 12 months.

Realignment of Naval College Rd

The funding was recently announced under the Australian Government's Bridges Renewal Program to replace bridges over Duck Creek on Naval College Rd.

This project will allow the replacement of an aged timber bridge with a concrete one and the opportunity will be taken to undertake some realignment of the road at the same time.

This work will occur during the 2016/17 financial year.

AATP Taxiway

As part of a project to upgrade the utility supply and subdivision infrastructure to the Albatross Aviation Technology Park, an extension to the taxiway within the AATP was also part of the funding package under the NSW Regional Industries Infrastructure Fund (now defunct).

Two sites fronting onto the extended taxiway are now in the process of being sold, so this work will be constructed during mid 2016.

Recently submitted Grant Applications

Two projects have been recently submitted to government in support of industry need and economic development.

Last mile access to Willinga Park

An application has been submitted under the NSW Fixing Country Roads program to join with the developer of the Willinga Park Equestrian Centre at Bawley Point for the upgrade and widening of Forster Rd.

This project essentially assists in the upgrade of a dirt road which forms the "last mile" for access to a major recreation/tourist facility at Bawley Point. The complex will host a variety of equestrian events as well as horse breeding activities which generate many heavy vehicle movements especially over concentrated periods of the calendar.

The project is not large but fitted the criteria of the program and had a good benefit/cost ratio.

Upgrading Nerriga Rd and Oallen Ford Rd

The Economic Development Office has been assisting Goulburn-Mulwaree Council with applications to NSW Fixing Country Roads and the Australian Government's Heavy Vehicle Safety Productivity Program for the upgrading of:

- Nerriga Rd from Nerriga to the intersection of Oallen Ford Rd including upgrades to the crossing of:
 - Bindi Brook
 - Nadgengutta Creek
- The intersection of Nerriga Rd and Oallen Ford Rd
- Oallen Ford Rd from intersection of Nerriga Rd to intersection of Sandy Point Rd including upgrades to:
 - Nadgigomar Creek

As part of the project, the crossings of Corang Creek and Ningee Nimble Creek will be assessed and form separate applications under the Bridge Renewal programs of both the NSW and Federal governments.

Shoalhaven Council is providing in kind support for this project and will not be required to submit any financial contribution.

The basis for this current major applications by GMC is to upgrade the roads to allow the removal of the current 15t limitation on Oallen Ford Rd. With the opening of the Oallen Ford Bridge over the Shoalhaven River the 5t limitation was removed and so this forms the next step of the upgrade to allow heavy vehicles better access across the Illawarra escarpment.

Support for the project has come from industries in Shoalhaven and the Southern Tablelands areas, community groups and associations, regional politicians and local government

FINANCIAL IMPLICATIONS:

The above works are all enhancements to Council infrastructure which will deliver benefits to industry and economic development. As part of each project Council will be required to make contributions in accordance with the project guidelines or agreement with funding partners.

These funding allocations have been incorporated into Council's budgets.

COMMUNITY ENGAGEMENT:

Where appropriate, local community engagement has been made. With the major projects written letters of support have been obtained.

SECTION MANAGER: Greg Pullen.

PURPOSE:

To update the committee on recent employment land activity and economic trends

RECOMMENDED that the report by the Economic Development Manager on economic trends and employment land activity be received for information.

OPTIONS

1. The recommendation be accepted as written.
2. An alternative recommendation be proposed.

DETAILS

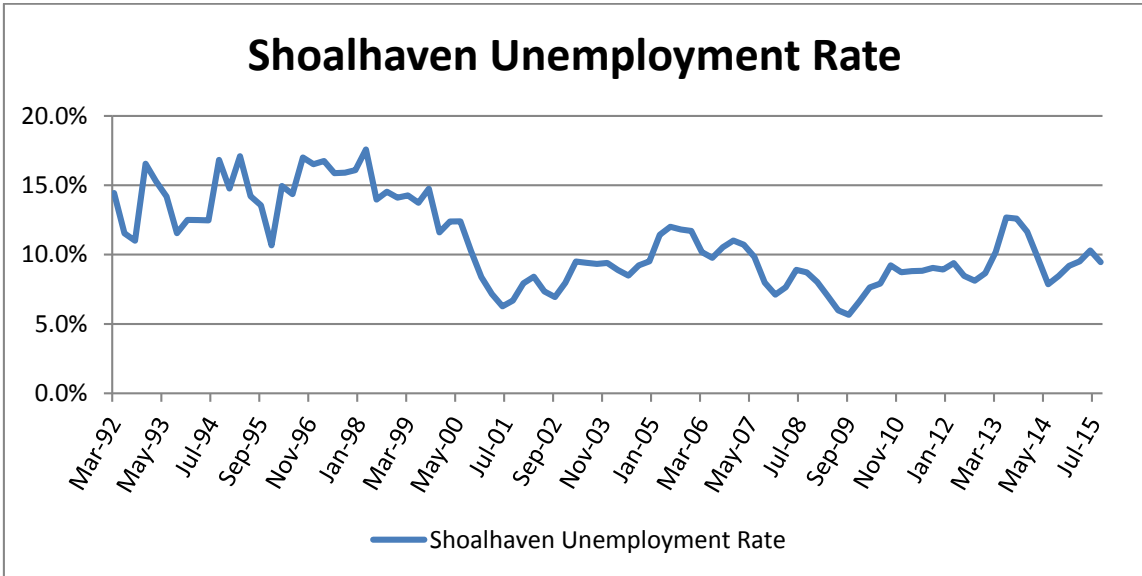
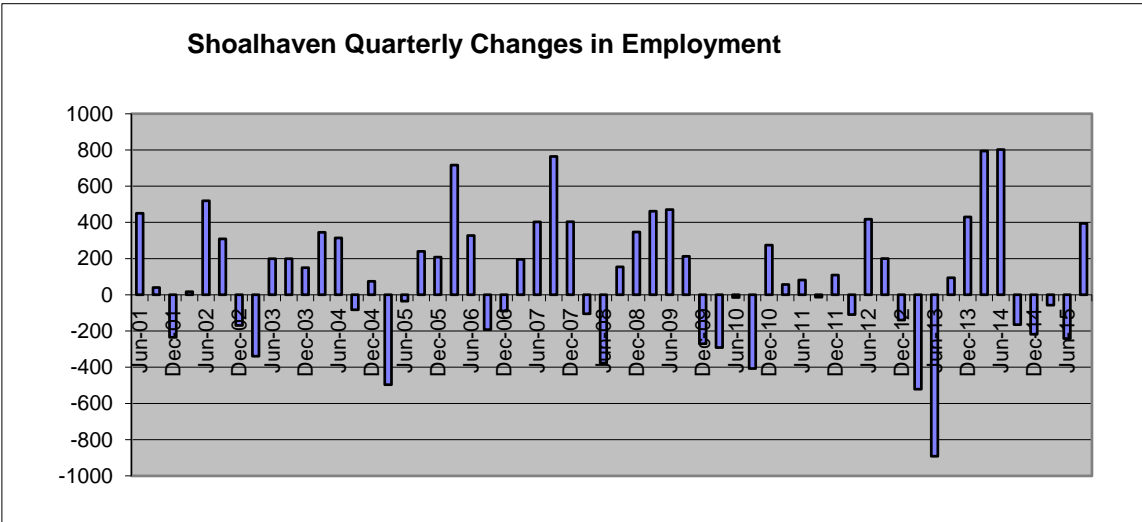
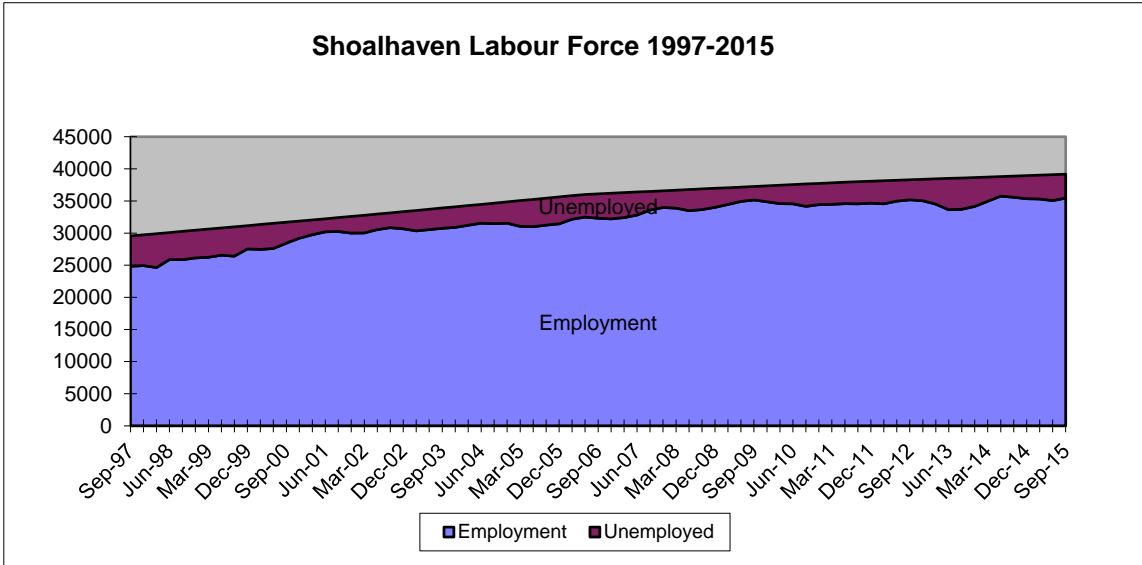
Labour market

With regard to the employment within Shoalhaven the following table shows the latest statistics:

	Sept 1995	Sept 2005	Sept 2015
Employment	24,473	31,246	35,461
Unemployment	3,032	4,186	3,705
Labour Force	24,473	35,432	39,166
Population	75,453	91,642	99,185

Compiled from data from ABS & DEEWR

The unemployment rate for Shoalhaven stood at 9.46% in September 2015 but the growth in jobs over the last decade shows an annual average growth rate of 1.3% which is faster than the rate of growth of the population at 0.8%. Considering that this timespan covers the period of the fallout from the GFC, jobs growth within the City is down but still showing positive growth.



The cyclical nature of the Shoalhaven Labour Market comes about because of a number of factors but primarily, because of the number of international businesses within our economy, the national and global markets. Uncertainty with employers in the public sector is also creating caution within the local labour market and spending patterns generally. The falling Australian Dollar will provide an opportunity for the local manufacturing sector.

The general trend can be best described as conservatively positive, but this rates ahead of most of regional Australia.

Economic Indicators

Since 2013 Council has been monitoring the Gross Regional Product for the Shoalhaven LGA. This calculation by REMPLAN is calculated using the expenditure method.

GRP is the total value of final goods and services produced in the Shoalhaven region over the period of one year. As can be seen from the table, this includes exports but subtracts imports.

GRP Expenditure Method	\$M
Household Consumption	\$4,430.958
Government Consumption	\$1,195.696
Private Gross Fixed Capital Expenditure	\$1,541.915
Public Gross Fixed Capital Expenditure	\$339.250
Gross Regional Expenses	\$7,507.819
plus Regional Exports	\$2,201.061
minus Domestic Imports	-\$4,461.829
minus Overseas Imports	-\$808.499
Gross Regional Product	\$4,438.551
Population	92,812
Per Capita GRP (\$'000)	\$47.823
Per Worker GRP (\$'000)	\$154.395

Over time the GRP will move and Shoalhaven is trending quite positively:

	Shoalhaven GRP
January 2013	\$3.738b
January 2014	\$4.056b (+7.84%)
January 2015	\$4.193b (+3.26%)
January 2016	\$4.439b (+5.54%)

The relative size of economies can be determined by comparing GRP and this is shown below:

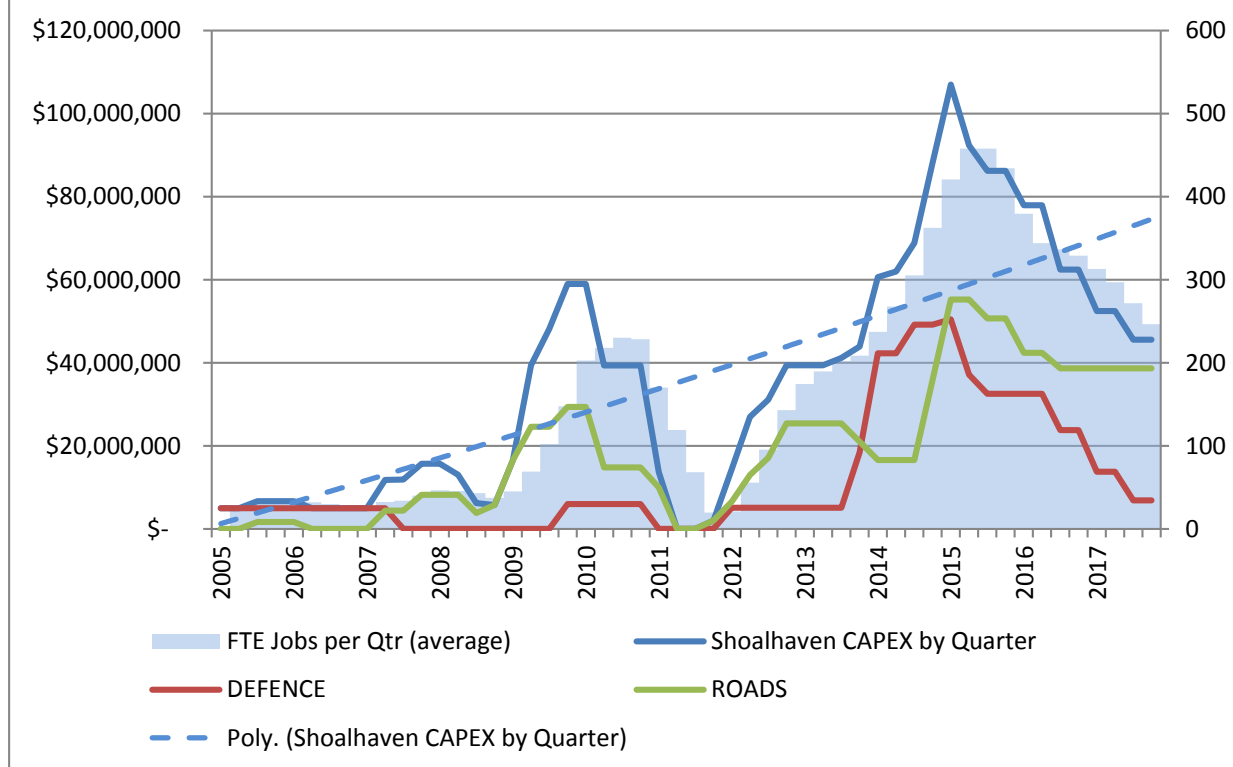
Port Stephens LGA	\$3.826b
Maitland LGA	\$3.625b
Muswellbrook LGA	\$2.441B
Newcastle LGA	\$14.228b
Lake Macquarie LGA	\$8.618b
Hawkesbury LGA	\$3.532b
Blue Mountains LGA	\$2.571b
Wollongong LGA	\$11.392b
Shellharbour LGA	\$2.104b
Kiama LGA	\$0.702b
Shoalhaven LGA	\$4.439b
Bega Valley LGA	\$1.631b

Capital Expenditure

The current major Capital Projects by Government are:

- Princes Highway – Toolijoa –Berry
- Princes Highway – Termeil Bridge
- Shoalhaven River Bridge Ddesign
- HMAS Albatross Stage 3 upgrade
- HMAS Albatross – AIR9000 Ph 7 HATS
- AATP – AIR9000 Ph 8 Seahawk support
- Shoalhaven Medical Precinct planning

SHOALHAVEN - MAJOR GOVERNMENT CAPITAL PROJECTS



Employment Land activity

In recent months the level of enquiries across industry sectors has increased steadily. Land sales have eventuated and DAs are now being assessed. Construction activities on some projects have commenced, but more will occur in upcoming months.

To date the following sales are at contract or settled:

- AATP – 2 lots settled – 1 under construction, 1 occupied; 3 lots in contract
- Flinders Estate – 2 lots settled – 1 occupied, 1 DA approved; 2 lots exchanged
- Huskisson Estate - 2 lot settled – 1 occupied, 1 DA submitted; 1 lot under contract-DA submitted; 1 lots under negotiation

If all of the above are realised and all 7 lots are sold, this will realise to Council in excess of \$4m and require construction of additional stages of subdivision at Huskisson and AATP.

The types of businesses that are purchasing land are:

- Local businesses that have outgrown their rental premises and wish to grow and develop their own premises (2)
- Relocating businesses to Shoalhaven (4)
- Existing Shoalhaven businesses looking to expand operations (6)

Advancement on other major projects have shown some significant progress in recent months with DAs having been approved and projects having moved or will shortly move into the construction phase such as:

- Jervis Bay Aquaculture
- Trinity College, Woollamia
- Manildra expansion
- Vincentia Shopping Centre
- Willinga Park Equestrian Centre at Bawley Pt
- Retail complex at Sth Nowra (Masters?)

FINANCIAL IMPLICATIONS:

The work currently being undertaken by the Economic Development Office is fully funded from Council's operating and capital budgets and other income generated.

The income from land sales will be reinvested into employment property development.

COMMUNITY ENGAGEMENT:

Realistically the contents above give a progressive picture and are not of interest to the community until visible construction can be seen. When developments start coming out of the ground then the media and community commence being interested.

7. Government Assistance Information Breakfast

File 38821e

SECTION MANAGER: Greg Pullen

PURPOSE:

This is to inform the committee about the upcoming Government Business Assistance Information Breakfast.

RECOMMENDED that the report on the Government Assistance Information Breakfast be received for information.

OPTIONS

1. The recommendation be accepted as written.
2. An alternative recommendation be proposed.

DETAILS

The Shoalhaven Business Chamber, in collaboration with the NSW Department of Industry and AusIndustry will be hosting a Government Business Assistance Information Breakfast. Representatives of 13 State and Commonwealth agencies will provide information about programs currently available to assist businesses to start, run and grow.

The breakfast is scheduled for Thursday 18th Feb 2016, commencing at 7am, to be held at Destiny's Restaurant, TAFE Illawarra Nowra Campus, Bomaderry.

Bookings can be made through the Shoalhaven Business Chamber (phone: 44 218 408). Cost is \$15 (including GST) per person.

FINANCIAL IMPLICATIONS:

There are no financial implications for Council.

COMMUNITY ENGAGEMENT:

This report to the Shoalhaven Business & Employment Development Committee is part of the community consultative process and its purpose is to inform.

Russ Pigg
GENERAL MANAGER

REPORT OF GENERAL MANAGER
BUSINESS & EMPLOYMENT DEVELOPMENT COMMITTEE

MONDAY, 15 FEBRUARY 2016

PLANNING AND DEVELOPMENT

8. **Development not Commenced in the Shoalhaven - Update**

File 38821E

SECTION MANAGER: Cathy Bern

PURPOSE:

The purpose of this report is to provide a further update to the Business and Employment Committee on larger development applications in the Shoalhaven Local Government Area (LGA) that have been lodged, approved but not yet physically commenced or that have been physically commenced with minor works only.

RECOMMENDED that the report of the General Manager (Planning & Development Services) regarding the update on development not commenced in the Shoalhaven be received for information.

OPTIONS - N/A

DETAILS

The Business and Employment Committee at its meeting 26 November received a report on approved larger developments in the Shoalhaven LGA that are approved but not yet physically commenced or that have been physically commenced with minor works only (i.e. development consent has been activated).

Attachment "A" provides an update.

The list is alphabetically arranged by way of suburb/locality. The second table lists recent approvals and current significant development applications that are under assessment.

The total value of development is \$567,445,144.

Tim Fletcher
DIRECTOR PLANNING & DEVELOPMENT SERVICES

R.D. Pigg
GENERAL MANAGER

ADDENDUM REPORT OF GENERAL MANAGER
BUSINESS AND EMPLOYMENT DEVELOPMENT COMMITTEE

MONDAY, 15 FEBRUARY 2016

GENERAL MANAGER

1. Information Report - Membership Review Update File 38821E

SECTION MANAGER: Greg Pullen.

PURPOSE:

To advise the current members of the membership review process to date.

RECOMMENDED that the Committee receive the report for information.

OPTIONS

1. That the Committee receive the report for information.
2. The Committee recommends Council undertake other action in relation to the Committee membership.

DETAILS

Council resolved at its Strategy and Assets Committee Meeting held on Tuesday 20 October 2015:

“That, in accordance with the Committee’s delegated authority from Council, that:

- a) Council cap the number of Community members to 15 for each committee;*
- b) All positions on the Committees be declared vacant and expressions of interest be called for members.*
- c) Council write to existing members advising membership is being reviewed and inviting them to submit nominations.”*

As a result of the above resolution, Council wrote to all current members inviting them to reapply and providing an application form for reapplication. .

Council advertised in the local newspapers and radio in an expressions of Interest process conducted from 26 November 2015 to 8 January 2016, from which only 6 applications were received. Council readvertised on Wednesday 20 January 2016 via Council’s website, and radio received a further 4 applications.

A report will be submitted to Council for final determination of the Membership of the Committee based on the ten (10) applications received from expressions of interest.

R.D Pigg
GENERAL MANAGER