



MILTON RAINFOREST BUSHCARE ACTION PLAN REVIEW

Document Number:D16/4798 • **Adopted:**24/05/2016 • **Minute Number:**MIN16.388• **File:** 26281E • **Produced By:** Planning & Development Services Group • **Review Date:**24/05/2019

CONTACT INFORMATION

Group Name:	Milton Rainforest Regeneration Bushcare Group
Contact:	Chris Symons
Address:	P.O. Box 38 Milton 2538
Phone:	4454 1607
Email:	csymons@tpg.com.au
Members:	Chris Symons, Paul & Joan Allen
Reserve Name:	Milton School Rainforest
Reserve Number:	SMI900
Land Tenure:	SCC Public Land
Comm. Land Type:	Community Land - Natural Area/Bushland

1. BUSHCARE GROUP GOALS

Aim:

To enhance the environmental quality of Milton Rainforest through the maintenance and rehabilitation of natural areas.

Goals:

1. Continue maintenance of areas of native vegetation.
2. Creation and care of islands of native vegetation in heavily weed infested areas.
3. Increase native plant population through planting and maintenance.
4. Ensure progress of past works through continued maintenance.
5. Complement and maintain works carried out by other groups through follow up weed removal and maintenance.
6. Apply for grant funding to continue the regeneration of the Milton – Ulladulla Sub Tropical Rainforest and the upgrading of facilities. Work with the Natural Areas Operations Officer to improve/upgrade the Milton Rainforest Track.

2. BUSHCARE GROUP ACHEIVEMENTS TO DATE – (What successes has your Bushcare Group achieved in relation to your achieving the goals and actions in your current Bushcare Group Action Plan and what lessons or new skills/knowledge have you learnt from these achievements?)

Successes/Goals/Actions achieved to date	Lessons learnt
On-going restoration of 6,890 square meters of Ulladulla-Milton Sub Tropical Rainforest that is listed as an Endangered Ecological Community under the NSW Threatened Species Conservation Act 1995	Due to the severity of the degradation to the vegetation the volunteers have had to direct their efforts to those sections of the remnant Milton-Ulladulla Sub Tropical Rainforest that are in better condition.
On-going maintenance and upgrading of the Milton Rainforest Walking Track	There have been some challenges with maintaining aging infrastructure on the walking track. The storm water runoff from the adjoining Milton Public School has been an on-going problem for the Southern sections of the walking track.
Planting of 2000 groundcovers, shrubs and trees around the perimeters of the rainforest to act as a buffer	An incident which resulted in the ground staff from Milton Public School undertaking burn piles on the reserve resulted in a good outcome of getting the school teachers and students involved in several National Tree Day planting days along the Southern section of the reserve.
Working with the Milton Public School to involve teachers and students in educational activities at the reserves, including 2 National Tree Day plantings.	As above

3. **SHOALHAVEN BUSHCARE GROUP ACTIVITIES TABLE (to be in conjunction with attached site map)**
NOTE: Priority should be rated as H = High (within 12 months); M = Medium (1-3 years); L = Low

GROUP ACTION (these should relate to your project description)	PRIORITY	METHOD	TIME
<p>Area 1 – National Tree Planting Revegetation Areas Current and Existing Actions (see plans map for details)</p> <ol style="list-style-type: none"> 1. Maintain current plantings and continue with further plantings as required with the Milton Public School 2. On-going control of environmental and noxious weeds targeting the following priority weeds: <ol style="list-style-type: none"> a. Lantana (<i>Lantana camara</i>) b. Large leaf Privet (<i>Ligustrum lucidum</i>) c. Small leaf Privet (<i>Ligustrum sinense</i>) d. Bridal Veil Creeper (<i>Asparagus asparagoides</i>) e. Turkey Rhubarb (<i>Acetosa sagittata</i>) f. <i>Madeira Vine (Anredera cordifolia)</i> g. Other weed species as required 3. Assist Council with maintenance of the walking track/boardwalk where resources allow <p>New Actions</p> <ol style="list-style-type: none"> 1. Work with Milton Public School to design and produce a brochure for the reserve 	<ol style="list-style-type: none"> 1. H 2. H 3. M 	<ol style="list-style-type: none"> 1. Replacement plantings using revegetation list 2. Manual and chemical control techniques as per best practice control management as per weed species 3. Council to supply materials and technical advice and Bushcare to undertake work 	<ol style="list-style-type: none"> 1. On-going 2. On-going 3. As needed

GROUP ACTION (these should relate to your project description)	PRIORITY	METHOD	TIME
<p>Area 2 - Healthy Rainforest Remnant Area (see plans map for detail) Current and Existing Actions</p> <ol style="list-style-type: none"> 1. On-going control of environmental and noxious weeds targeting the following priority weeds: <ol style="list-style-type: none"> a. Lantana (<i>Lantana camara</i>) b. Large leaf Privet (<i>Ligustrum lucidum</i>) c. Small leaf Privet (<i>Ligustrum sinense</i>) d. Bridal Veil Creeper (<i>Asparagus asparagoides</i>) e. Turkey Rhubarb (<i>Acetosa sagittata</i>) f. <i>Madeira Vine (Anredera cordifolia)</i> g. Other weed species as required 2. Council staff and/or contractors assist the Bushcare Group with weed control/restoration works by treating all climbing <i>Madeira Vine (Anredera cordifolia)</i> in this area 	<ol style="list-style-type: none"> 1. H 2. H 	<ol style="list-style-type: none"> 1. Manual and chemical control techniques as per best practice control management as per weed species 2. Scrape and paint all climbing Maderia Vine with Vigilant® 	<ol style="list-style-type: none"> 1. On-going 2. Spring - Summer
<p>Area 3 – Degraded Weedy Rainforest Remnant (see plans map for details) Current and Existing Actions (<i>The actions in this area are only to be undertaken by staff/contractors if and when external funding is available, it is not the responsibility of the Bushcare Group</i>)</p> <ol style="list-style-type: none"> 1. On-going control of environmental and noxious weeds targeting the following priority weeds: <ol style="list-style-type: none"> a. Lantana (<i>Lantana camara</i>) 	<ol style="list-style-type: none"> 1. H 	<ol style="list-style-type: none"> 1. Manual and chemical control techniques as per best practice control management as per weed species 	<ol style="list-style-type: none"> 1. On-going

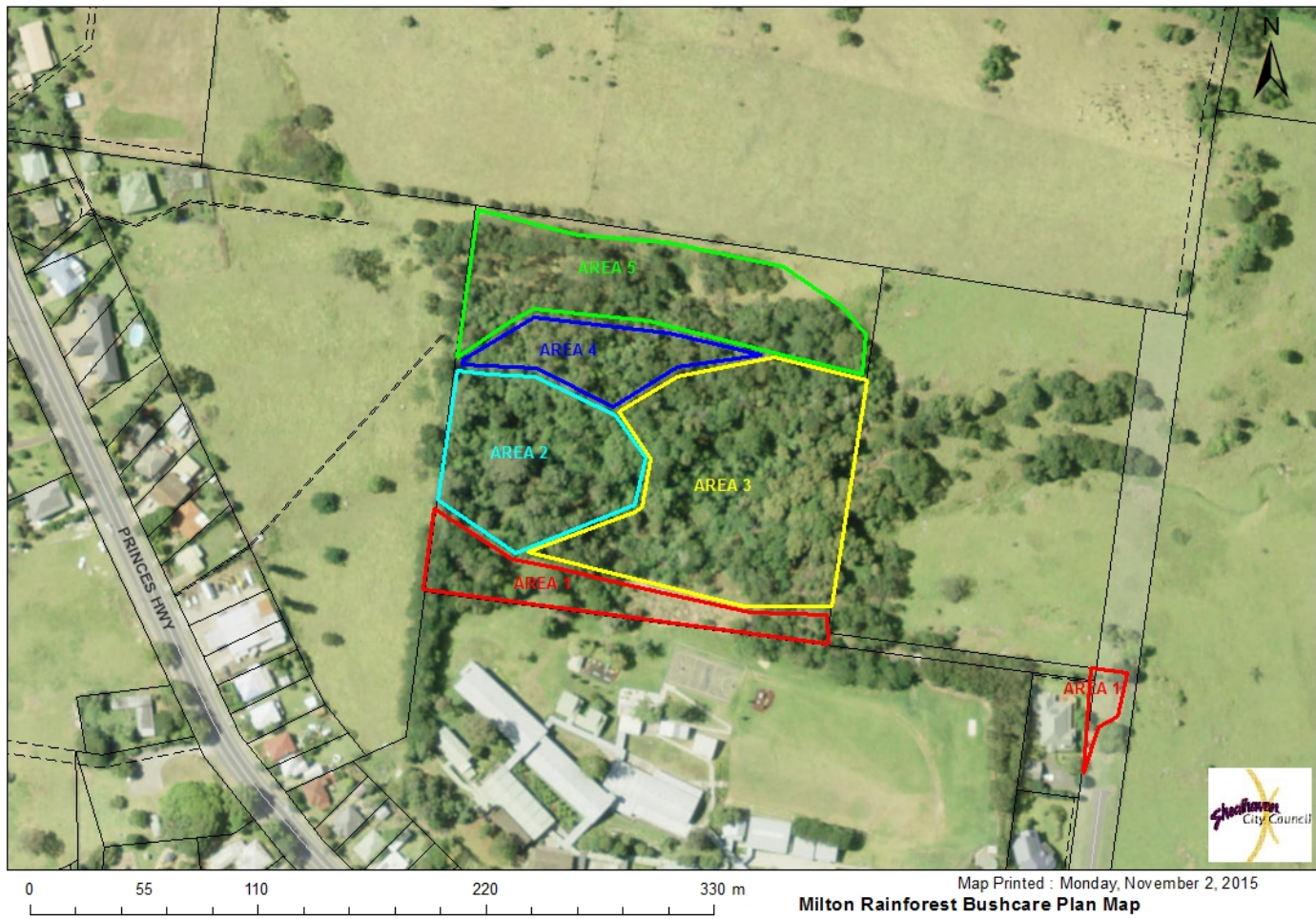
GROUP ACTION (these should relate to your project description)	PRIORITY	METHOD	TIME
<p>b. Large leaf Privet (<i>Ligustrum lucidum</i>) c. Small leaf Privet (<i>Ligustrum sinense</i>) d. Bridal Veil Creeper (<i>Asparagus asparagoides</i>) e. Turkey Rhubarb (<i>Acetosa sagittata</i>) f. <i>Madeira Vine</i> (<i>Anredera cordifolia</i>) g. Other weed species as required h. Council staff and/or contractors assist the Bushcare Group with weed control/restoration works by treating all climbing <i>Madeira Vine</i> (<i>Anredera cordifolia</i>) in this area</p> <p>New Actions</p> <p>1. Bushcare Group and Council staff to establish monitoring areas using transect and quadrats to monitor the changes in vegetation</p>	<p>2. M</p>	<p>2. Council staff to assist the Bushcare Group to establish vegetation management plots and undertake monitoring</p>	<p>2. 2016 - 2018</p>

GROUP ACTION (these should relate to your project description)	PRIORITY	METHOD	TIME
<p>Area 4 - Prayer Wheel Area Current and Existing Actions</p> <ol style="list-style-type: none"> 1. Bushcare Group to continue to undertake noxious and environmental control as required targeting the following priority weed species: <ol style="list-style-type: none"> a. Lantana (<i>Lantana camara</i>) b. Large leaf Privet (<i>Ligustrum lucidum</i>) c. Small leaf Privet (<i>Ligustrum sinense</i>) d. Bridal Veil Creeper (<i>Asparagus asparagoides</i>) e. Turkey Rhubarb (<i>Acetosa sagittata</i>) f. <i>Madeira Vine (Anredera cordifolia)</i> g. Other weed species as required 2. Bushcare Group to undertake supplementary plantings as required. 	<ol style="list-style-type: none"> 1. H 2. M 	<ol style="list-style-type: none"> 1. Manual and chemical control techniques as per best practice control management as per weed species 2. Planting using revegetation list 	<ol style="list-style-type: none"> 1. On-going 2. As needed

GROUP ACTION (these should relate to your project description)	PRIORITY	METHOD	TIME
<p>Area 5 – Northern Revegetation Area (see maps plans for details)</p> <p>Current and Existing Actions</p> <ol style="list-style-type: none"> 1. Bushcare Group to continue with maintenance/revegetation of this area to act as buffer for the rainforest remnant to the South. 2. Council to continue to control Blackberry (<i>Rubus fruticosus</i>) outbreaks under the guidance of the Bushcare Group Coordinator 3. Bushcare Group to continue to undertake noxious and environmental control as required 	<ol style="list-style-type: none"> 1. M 2. H <p style="text-align: center;">H</p>	<ol style="list-style-type: none"> 1. Undertake planting using revegetation list 2. Bushcare Group Coordinator to report Blackberry to Council Bushcare Coordinator for treatment 3. Manual and chemical control techniques as per best practice control management as per weed species 	<ol style="list-style-type: none"> 1. On-going 2. As needed <p>On-going</p>
<p>Walking Track Infrastructure (Whole of the Reserve See map in appendix 2)</p> <p>Current and Existing Actions</p> <ol style="list-style-type: none"> 1. Bushcare Group to assist with smaller maintenance task of maintain the walking track such as: <ol style="list-style-type: none"> a. Topping up track material as required b. Minor drainage improvements c. Minor erosion control d. Minor repairs 	<ol style="list-style-type: none"> 1. M 	<ol style="list-style-type: none"> 1. Council to provide materials and technical advice 	<ol style="list-style-type: none"> 1. As needed

GROUP ACTION (these should relate to your project description)	PRIORITY	METHOD	TIME
2. Shoalhaven Council to undertake upgrades and maintenance, within budgetary constraints, of the walking track such as: <ul style="list-style-type: none"> a. Larger drainage improvements b. Larger erosion control works c. Replacement of infrastructure/assets i.e. footbridge, track surface & building/shelter d. Signage replacement and installation 3. Bushcare Group to report infestations of <i>Rubus fruticosus</i> (Blackberry) infestations across the whole reserve to Council for control under regular maintenance program	2. M 3. M	2. Undertake works as budgetary capacity allows 3. Council Noxious Weeds unit to undertake Blackberry control	2. As needed 3. Annually

4. MILTON RAINFOREST REGENERATION BUSHCARE GROUP ACTION PLAN MAP



5. BUSHCARE GROUP WHS & EQUIPMENT REQUIREMENTS

Type of Activity	Yes	SWMS name included
Manual weed control (cut & paint, scrape and paint etc)	√	SWMS1276
Chemical control (spraying of herbicides)	√	SWMS1276
Planting	√	SWMS1265
Minor construction (walking track, fencing, outdoor furniture)	√	SWMSNR020
Propagation & seed collection		SWMS1265
Education (school groups, field days etc)	√	NA

6. COUNCIL SUPPORT

Shoalhaven Council will provide the following support:

1. Provision Tools, Equipment, PPE and Chemical
2. Provision of Bushcare Field Officer for 11 sessions over 12 months
3. Assistance with all aspects of walking track maintenance as well as other Council assets on the reserve
4. Provision of mulch and plants within budget capacity
5. Free green waste tipping fees of up to \$27 per month Assistance with technical advice
6. Removal of larger debris – Council employ staff to help in the removal of this debris
7. Regular slashing of the walking track up to 1st timber boardwalk

7. HAS A SITE HAZARD AND RISK ASSESSMENT BEEN COMPLETED FOR THE BUSHCARE SITE?

Yes √ No

8. LIST THE PERSONAL PROTECTION EQUIPMENT REQUIRED FOR VOLUNTEERS WHILST WORKING ON THE SITE

PPE Equipment Required	Date issued
First Aid Kit	2015
Gloves	2015
Sunscreen	2015
Insect repellent	2015

9. POSSIBLE FUTURE FUNDING

Project	Funding source
Restoration and weed control in area 3 in the core of the rainforest	Various

10. PLAN WILL BE REVIEWED EVERY THREE YEARS

Next review due:

24/05/2019

11. PLEASE LIST OTHER LOCAL OR REGIONAL MANAGEMENT PLANS OR STRATEGIES THAT THIS PLAN RELATES TO

Name of document	Year it was produced	Produced by
Generic Community Land Plan of Management - Natural Areas	2001	Shoalhaven City Council
South East Local Land Services Strategic Plan	2015	SE Local Land Services

12. BUSHCARE SITE RECOMMENDED PLANTING/REVEGETATION SPECIES LIST

OVERSTOREY TREES	
Botanical	Common
<i>Acmena smithii</i>	Lilly Pilly
<i>Alectryon subcinereus</i>	Native quince
<i>Diospyros australis</i>	Black Plum
<i>Duboisia myoporoides</i>	Corkwood
<i>Ehretia acuminata</i>	Koda
<i>Rapanea variabilis</i>	Muttonwood
<i>Rapanea howittiana</i>	Howits Rapeana
<i>Streblus brunianthus</i>	Whalebone Tree
<i>Toona ciliata</i>	Red Cedar
<i>Acmena smithii</i>	Lilly Pilly
SHRUBS	
Botanical	Common
<i>Acmena smithii</i>	Lilly Pilly
<i>Alectryon subcinereus</i>	Native quince
<i>Diospyros australis</i>	Black Plum
<i>Duboisia myoporoides</i>	Corkwood
<i>Ehretia acuminata</i>	Koda
<i>Rapanea variabilis</i>	Muttonwood
<i>Rapanea howittiana</i>	Howits Rapeana
UNDERSTOREY (grasses, herbs, climbers)	
Botanical	Common
<i>Clematis aristata</i>	Travellers Joy
<i>Entolasia stricta</i>	
<i>Eustrephus latifolius</i>	Wombat Vine
<i>Geitonoplesium cymosum</i>	Scrambling Lily
<i>Glycine tabacina</i>	Brush Glycine
<i>Hibbertia scandens</i>	Guinea Flower
<i>Microleana stipoides</i>	Weeping
<i>Oplismenus imbecillis</i>	Basket Grass
<i>Pandorea pandorana</i>	Wonga Vine

13. BUSHCARE SITE WEED LIST (The following weeds have been recorded on the site)

Noxious	Environmental	Control Method
Blackberry (<i>Rubus fruticosus</i>)		Stem scrape canes and paint on with neat roundup or foliar spray with selective herbicide
<i>Lantana</i> (<i>Lantana camara</i>)		Cut stump application or foliar spray with roundup at ratio 1:100 during peak flowering periods
Large leaf Privet (<i>Ligustrum lucidum</i>)		Cut stump or frill and direct inject
	Bridal Veil Creeper (<i>Asparagus asparagoides</i>)	Release Bridal Creeper rust and spot spray larger infestations with Glyosate at ratio of 1:100
	Erythrina x sykesii (Coral Tree)	Large trees need to be drilled and injected with neat Glyphosate smaller re growth can be treated using the cut stump method
	<i>Madeira Vine</i> (<i>Anredera cordifolia</i>)	Stem scrape isolated patches and bag all aerial tubers remove from site. Larger infestations need to be sprayed with selective
	Wandering Jew (<i>Tradescantia fluminensis</i>)	Hand remove smaller infestation and spray larger infestations with a selective herbicides.
	Turkey Rhubarb (<i>Acetosa sagittata</i>)	Spot spray with glyphosate 360 at 20ml per litre
	Moth Plant (<i>Aruajia sericifera</i>)	Hand pull all plants

**14. AREA 5 BUSHCARE SITE SPECIES LIST – VEGETATION
TRANSECT 1 (The following species have been recorded on the site
see appendix 1 for location details)**

OVERSTOREY TREES	
Botanical	Common
<i>Acacia mearnsii</i>	Black Wattle
<i>Eucalyptus tereticornis</i>	Forest Red Gum
<i>Syncarpia glomulifera</i>	Turnpentine
SHRUBS	
Botanical	Common
<i>allocasuarina torulosa</i>	Forest Oak
<i>Callicoma serratifolia</i>	Black Wattle
<i>Cloaxylon australe</i>	Brittlewood
<i>Hymenanthera dentata</i>	Tree Violet
<i>Pittosporum multiflorum</i>	Orange Thorn
<i>Pittosporum undulatum</i>	Native Daphne
<i>Rapanea howittiana</i>	Turnipwood
<i>Streblus brunonianus</i>	Whale Bone
<i>Toona ciliata</i>	Red Cedar
<i>Trema tomentosa</i>	Native Peach

<i>Tristaniopsis laurina</i>	Water Gum
UNDERSTOREY (grasses, herbs, orchids)	
Botanical	Common
<i>Dichondra repens</i>	Kidney Weed
<i>Oplismenus aemulus</i>	Basket Grass
UNDERSTOREY (vines & climbers)	
Botanical	Common
<i>Clematis aristata</i>	Old Man's Beard
<i>Eustrephus latifolius</i>	Wombat Berry
<i>Morinda jasminoides</i>	Jasmine Morinda
<i>Parsonsia straminea</i>	Silkpod Vine

15. **AREA 3 RAINFOREST GULLY BUSHCARE SITE SPECIES LIST –
VEGETATION TRANSECT 2 (The following species have been
recorded on the site see appendix 1 for location details)**

OVERSTOREY TREES	
Botanical	Common
<i>Acacia mearnsii</i>	Black Wattle
<i>Brachychiton acerifolius</i>	Illawarra Flame Tree
<i>Dendrocnide excelsa</i>	Giant Stinging Tree
<i>Streblus brunonianus</i>	Whale Bone
<i>Syzygium paniculatum</i>	Magenta Cherry
<i>Toona ciliata</i>	Red Cedar
SHRUBS	
Botanical	Common
<i>Acacia maidenii</i>	Maidens Blush
<i>Breynia oblongifolia</i>	Native Coffee
<i>Callicoma serratifolia</i>	Black Wattle
<i>Cloaxylon australe</i>	Brittlewood
<i>Elatostema reticulatum</i>	Rainforest Spinache
<i>Ficus coronata</i>	Sandpaper Fig
<i>Homalanthus populifolius</i>	Bleeding Heart

<i>Hymenanchera dentata</i>	Tree Violet
<i>Melia azedarach</i>	White Cedar
<i>Pittosporum multiflorum</i>	Orange Thorn
<i>Pittosporum revolutum</i>	Rough Fruited Pittosporum
<i>Pittosporum undulatum</i>	Native Daphne
<i>Rapanea howittiana</i>	Turnipwood
<i>Solanum aviculare</i>	Kangaroo Apple
<i>Streblus brunonianus</i>	Whale Bone
<i>Toona ciliata</i>	Red Cedar
<i>Tristaniopsis laurina</i>	Water Gum
UNDERSTOREY (grasses, herbs, orchids)	
Botanical	Common
<i>Doodia aspera</i>	Rasp Fern
<i>Gymnostachys anceps</i>	Settlers Flax
<i>Urtica incisa</i>	Native Stinging Nettle
UNDERSTOREY (vines & climbers)	
Botanical	Common
<i>Aphanopetalum resinosum</i>	Gum Vine
<i>Clematis aristata</i>	Old Man's Beard

<i>Morinda jasminoides</i>	Jasmine Morinda
<i>Passiflora herbertiana</i>	Native Passionfruit
<i>Pandorea pandorana</i>	Wonga Vine
<i>Rubus parviflorus</i>	Native Raspberry
<i>Sarcopetalum harveyanum</i>	Pearl Vine

Appendix 1 – Map showing location of vegetation transects



Appendix 2: Milton Rainforest Walking Track Map (Draft Shoalhaven Walking Track Strategy)

