

## Collingwood Beach Restoration Work

In 1974, strong storms severely eroded Collingwood Beach, damaging already stressed dune vegetation (Figure 3). Following the storms, wave action gradually returned sand to the beach. However, without protective vegetation the sand drifted inland. Apart from the nuisance of sand drifting into private homes and yards and on to roads (Figure 4A), the most serious result was the inability of the sand to reform dunes. This placed private and public land at risk of damage by erosive storms.

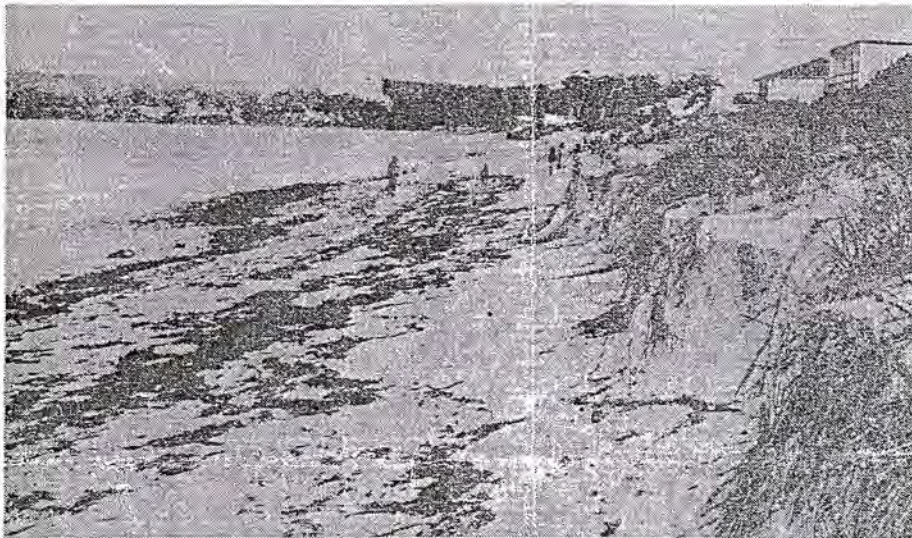


Figure 3: Storm action at the southern end of Collingwood Beach, 1977.

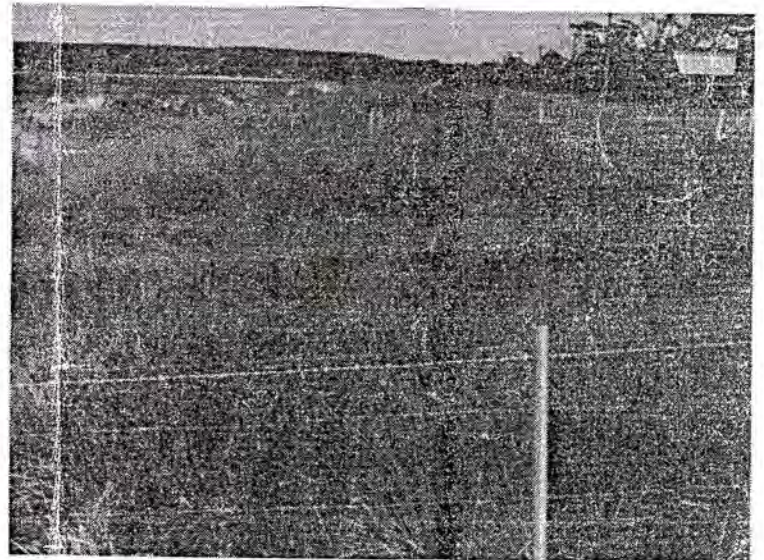
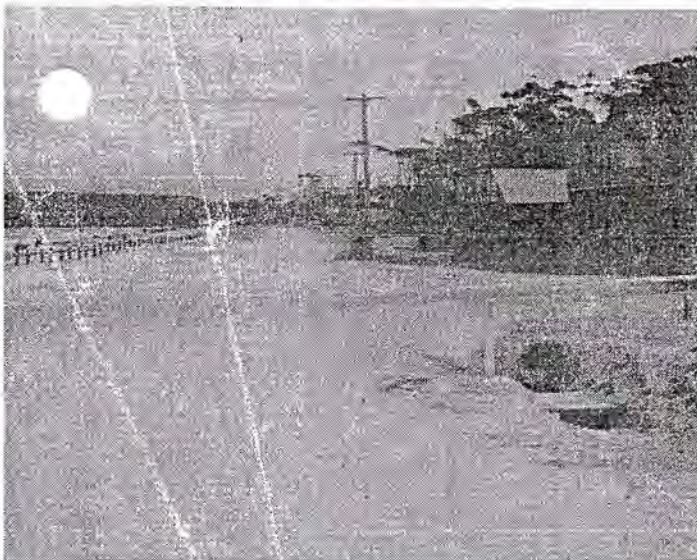


Figure 4A: (Left) Active sand drift in March 1978 along Ilfracombe Avenue.  
Figure 4B: (Right) The same area after completion of restoration works.

In 1978, Shoalhaven Council and the Soil Conservation Service commenced a dune restoration project along the beach. This project involved reforming the dunes, fencing, providing stable access tracks and planting marram and spinifex grasses. The local community assisted with the restoration and follow-up maintenance works, including planting over 2500 trees, replanting grasses and applying fertiliser.

The immediate benefit of the restoration works was that sand drift was controlled and the potential for further sand drift reduced (Figure 4B). The long term benefit was that the beach was restored to a condition where it could and would continue to withstand public usage and natural forces without substantial deterioration.

### **Protecting Our Beaches. We Must Care.**

The cooperation of local residents and beach users is required to maintain stable dunes along Collingwood, Orion and Nelson Beaches. The destruction of the dunes and vegetation which occurred in the past should not be repeated.

There are many ways that you can help look after our beaches.

- \* Leave branches and plants on the dunes instead of cutting, poisoning and burning them. The shrubs now being planted on the dunes and adjoining areas are low growing varieties which will not obstruct people's view.
- \* Do not interfere with fencing and fenced areas and always use provided walkways and access tracks. This will protect vegetation cover in fenced and other areas.
- \* Take notice of all signs on and around beaches.
- \* Collect your rubbish and "Do the Right Thing" for Australia.
- \* Join a Dunecare or Landcare group or form your own group and take an active role in caring for our beaches and surrounding areas.
- \* Report any damage of the dunes and their vegetation to the Ranger.

*This publication has been produced by the Collingwood Beach Dunecare Group, Vincentia Ratepayers and Residents Association Inc. and Department of Conservation and Land Management, Nowra.*

# COLLINGWOOD BEACH DUNE STABILISATION

Sand dune stabilisation work is planned for Collingwood Beach, Vincentia. A series of storm events as well as the unauthorised removal of dunal vegetation have contributed to this beach's degradation.

It is important to ensure that the sand dunes at Collingwood Beach are encouraged to grow and store sand to their best potential.

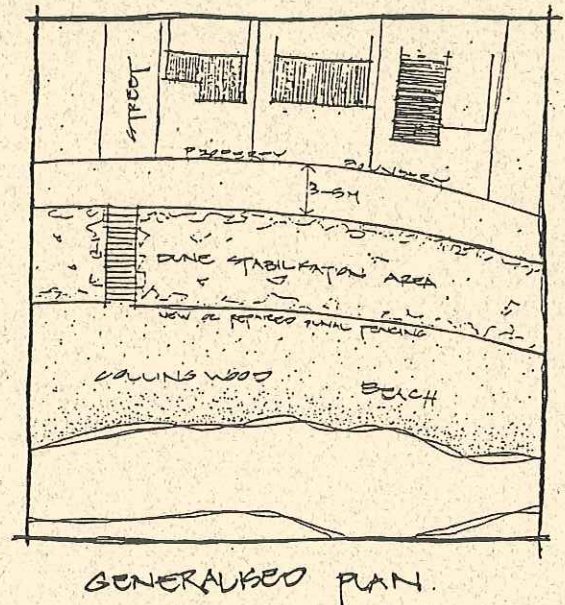
Residents who remember the major storms of 1974/75 will understand the importance of a healthy sand dune system and we hope that all residents will contribute to the success of the current work.

## Planned Work

Proposed work to be carried out by the Department of Land and Water Conservation under contract to Council is:

- dunal protection fence renewal and repair;
- pedestrian beach access renewal and repair;
- foredune shaping and revegetation;
- planting of coastal native vegetation; and
- vegetation enrichment (fertiliser application).

New work will be confined to the beach reserve from Ifracombe Avenue to Susan Street. New fencing will be placed in a similar location to the existing fencing, generally between 3 and 5 metres from the property boundary.



## Your Help is Needed

You can assist by:

1. Using provided beach accessways.
2. Not entering protected dunal areas.
3. Protecting existing vegetation (no pruning or destruction).
4. Encouraging and protecting new revegetation programs.
5. Disposing of garden rubbish and weeds at provided waste depots (not on coastal reserves).
6. Becoming involved in keeping your beach and dunal system clean and tidy.
7. Keeping boats off dunal area.

## Please Note

The Sand Dune Stabilisation Program is independent of the Cycleway Project for Vincentia. The Dune Stabilisation Program was planned several years ago and is now proceeding having received grant funding from the State Government.

## More Information?

Re Dunal Work: Contact David Zerafa or Gary Druett, DLWC,  
Telephone (02) 4423 0122.

Re Cycleway: Contact Gordon Clark, Shoalhaven City Council,  
Telephone (02) 4429 3355.

