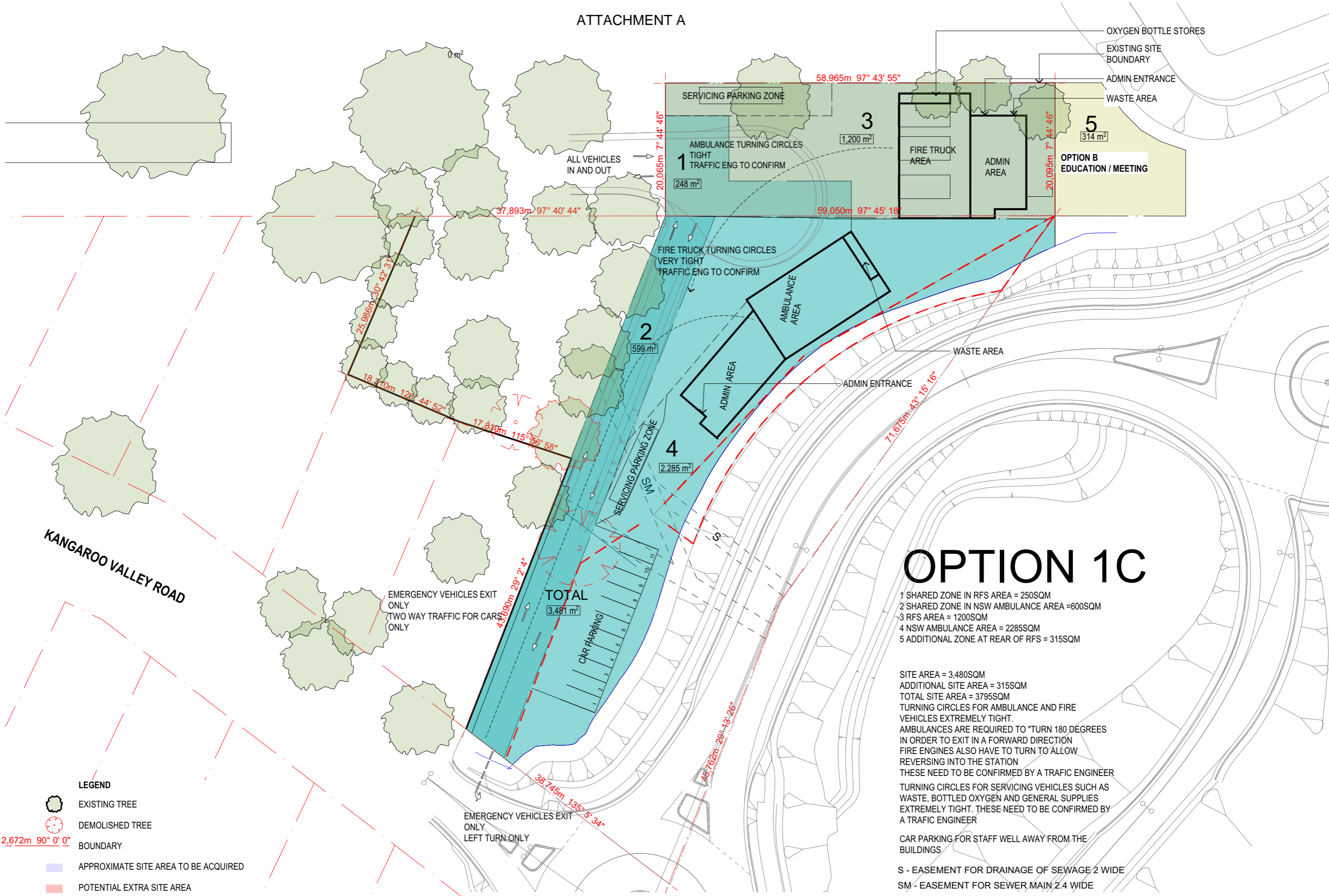


ATTACHMENT A



# OPTION 1C

- 1 SHARED ZONE IN RFS AREA = 250SQM
- 2 SHARED ZONE IN NSW AMBULANCE AREA = 600SQM
- 3 RFS AREA = 1200SQM
- 4 NSW AMBULANCE AREA = 2285SQM
- 5 ADDITIONAL ZONE AT REAR OF RFS = 315SQM

SITE AREA = 3,480SQM  
 ADDITIONAL SITE AREA = 315SQM  
 TOTAL SITE AREA = 3795SQM  
 TURNING CIRCLES FOR AMBULANCE AND FIRE VEHICLES EXTREMELY TIGHT. AMBULANCES ARE REQUIRED TO "TURN 180 DEGREES IN ORDER TO EXIT IN A FORWARD DIRECTION FIRE ENGINES ALSO HAVE TO TURN TO ALLOW REVERSING INTO THE STATION THESE NEED TO BE CONFIRMED BY A TRAFIC ENGINEER  
 TURNING CIRCLES FOR SERVICING VEHICLES SUCH AS WASTE, BOTTLED OXYGEN AND GENERAL SUPPLIES EXTREMELY TIGHT. THESE NEED TO BE CONFIRMED BY A TRAFIC ENGINEER

CAR PARKING FOR STAFF WELL AWAY FROM THE BUILDINGS

S - EASEMENT FOR DRAINAGE OF SEWAGE 2 WIDE  
 SM - EASEMENT FOR SEWER MAIN 2.4 WIDE

- LEGEND**
- EXISTING TREE
  - DEMOLISHED TREE
  - 2,672m 90° 0' 0" BOUNDARY
  - APPROXIMATE SITE AREA TO BE ACQUIRED
  - POTENTIAL EXTRA SITE AREA

