



## BOMADERRY CREEK BUSHCARE ACTION PLAN - 2020

**Document Number:** D17/145896 • **Adopted:** 9/4/20 • **Minute Number:** MIN20.259 • **File:** 26279E • **Produced By:** Planning Environment & Development Services Group • **Review Date:** 9/4/26

### CONTACT INFORMATION

<b>Group Name:</b>	Bomaderry Creek Bushcare Group
<b>Reserve Name:</b>	Bomaderry Creek, Kvanstrom and Glenview St reserves
<b>Reserve No.s:</b>	NBO093; NBO122; NBO112; NNN081; NNN083; NNN085;
<b>Land Tenure:</b>	Shoalhaven City Council (Community Land – Natural Areas). NPWS

### 1. BUSHCARE GROUP AIMS AND OBJECTIVES

**Aims:**

To help improve the condition of bushland within public areas along the Bomaderry Creek corridor

**Objectives:**

Undertake works to improve vegetation by controlling weeds and revegetation of disturbed areas.

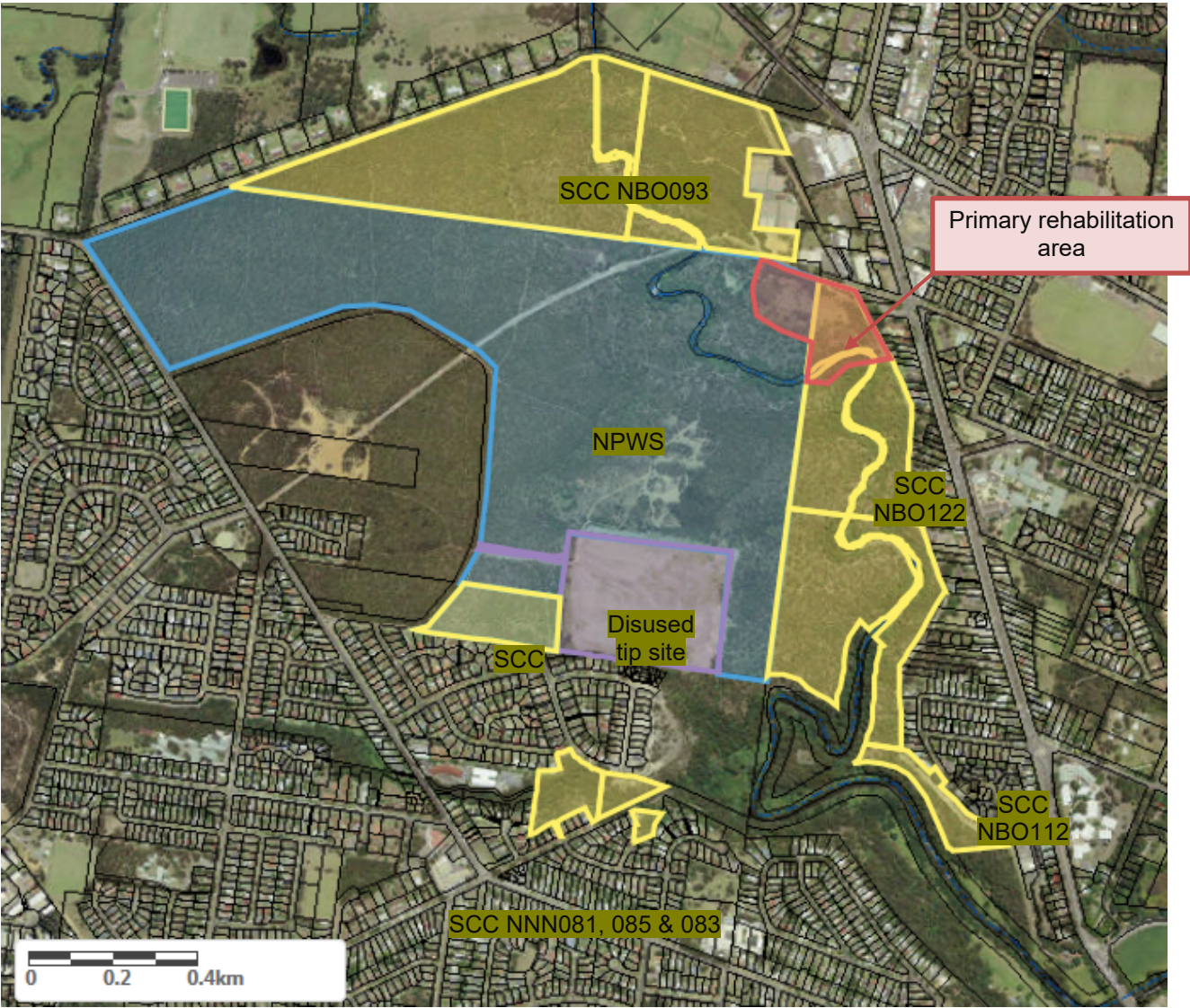
To help record changes in the condition of the reserves

Assist agencies and private property owners along the Bomaderry Creek corridor to better manage the environmental, cultural and recreational resources of the bushland.

## 2. BUSHCARE GROUP ACHIEVEMENTS TO DATE

<b>Successes/Goals/Actions achieved to date</b>	<b>Lessons learnt</b>
Successful summer watering and year-round weeding activities to ensure survival of plantings on old Council spoil site	Need to increase Group membership and long-term/ongoing commitment to field work
Reduced Mother of Millions infestations at and near Bomaderry Zieria sites	Need to make long-term commitment to this eradication program. Bushfire seems to have removed most of this weed in some areas
Enhancement plantings of Bomaderry Zieria achieved	Need to assist agencies with follow-up management of the plantings
Liaison with the Nowra Local Aboriginal Land Council (NLALC) commenced	Liaison with NLALC has proved productive to date
Liaison with private freeholders has commenced	Positive responses have been received so far
Bushland resources assessment has continued	Commitment to this program is essential
Community awareness, communications and training has continued	This has proved most effective through face to face contact with visitors and through schools taking part in educational activities throughout the Bushland

3. BUSHCARE GROUP ACTION PLAN MAP



#### 4. SHOALHAVEN BUSHCARE GROUP ACTIVITIES

Priority rated as H = High (started within 12 months); M = Medium (1-3 years); L = Low

GROUP ACTION	PRIORITY	METHOD	TIME
<p><b>Primary Rehabilitation Area: old Council spoil site</b>  <i>Sites: Parts of Bomaderry Ck. Regional Park and NBO122 (see map above)</i></p>			
<p>1. Rehabilitation of old Council spoil site as a buffer to Zieria sites and general health of the reserve.</p>	H	Weed control	Ongoing
	H	Watering of previous plantings, during prolonged dry periods, until plants become established.	As needed
	H	Undertake additional plantings in adjacent areas.	Annually - autumn and winter
<p>2. Work with Council to reduce littering and illegal camping on the site</p>	H	Approaches may include activities such as fencing and gating, signage and ranger patrols.	Ongoing

**Bomaderry Zieria (*Zieria baeuerlenii*) Species Recovery project support.**

Sites: Bomaderry Ck. Regional Park, NBO093 and NBO122

GROUP ACTION	PRIORITY	METHOD	TIME
1. Mother of Millions eradication at and near Bomaderry Zieria sites.	H	Hand removal and chemical control of weeds.	Ongoing
2. Measuring and reporting success of experimental burning sites and fenced herbivore exclusion sites.	H	Regular monitoring.	Annually
3. Enhancement planting of <i>Zieria baeuerlenii</i>	H	Provide support for the agency working group in meetings and in the field	As requested
4. Bomaderry Creek Bushland fire management	H	Through monitoring, provide information on biodiversity implications of bushfires and trial burning particularly regarding threatened plant species such as <i>Zieria baeuerlenii</i> , <i>Genoplesium bauera</i> , <i>Eucalyptus langleyi</i> and <i>Hibbertia stricta</i> subsp. <i>furculata</i> .	Ongoing

GROUP ACTION	PRIORITY	METHOD	TIME
<b>Secondary sites - North Nowra</b>			
5. Weed control and monitoring reserves NNN081, NNN083, NNN085 (Glen View St. and Jamieson Rd - Mahogany Creek)	L	Undertake monitoring and inform Council of weed infestations. Where possible, assist with control. Monitor illegal vehicle entry.	Ongoing
6. Weed control within Crown Lots 152, 7312, 7313, 7326, 7327	L	Liaise with Nowra Local Aboriginal Land Council (NLALC) to investigate opportunities to partner in monitoring and control of weed infestations.	Ongoing
<b>Secondary sites - Bomaderry</b>			
7. Monitoring of weed infestations and weed control through community land between Bomaderry Creek and the Princes Highway (NBO122 and NBO112)	L	Undertake monitoring and inform Council of weed infestations. Where possible, assist with control.	Ongoing
8. Assist weeding and planting Bomaderry Creek Regional Park	L	In cooperation with NPWS. Manual weed control or herbicide use as per product labels or APVMA permits. Local native plant species to be used in revegetation.	Ongoing
9. Weeding and planting in reserve NBO093 (Old Camellia Garden and adjacent dump sites)	L	Manual weed control or herbicide use as per product labels or APVMA permits. Local native plant species used in revegetation.	Ongoing

GROUP ACTION	PRIORITY	METHOD	TIME
<b><i>Knowledge, Engagement and Promotion</i></b>			
1. Bushland resources assessment	M	Help record the bushland's natural and cultural assets	Ongoing
2. Community awareness, communications and training	M	<p>Maintain Bomaderry Creek Landcare website, Facebook page and email stream.</p> <p>Help distribute walks leaflet and other information material.</p> <p>Work with NPWS on Discovery Program and with TAFE, NLALC, schools, community groups and individuals.</p> <p>Conduct interpretation and training activities.</p>	Ongoing

**5. VOLUNTEER ACTIVITIES RELATED TO THE ACTION:**

New volunteers must be inducted in Shoalhaven City Councils corporate induction process and volunteers must comply with the Volunteer Induction Handbook.

Based on the activities included in this action plan, a new site hazard and risk assessment will be completed. Volunteers are to be inducted on this revised risk assessment with the adoption of this plan. The 'site hazard and risk assessment' is to be revised as need be, for example, upon the identification of a new hazard, or of a new control measure for an existing hazard.

The following activities are managed by Council through the following documents. Volunteers must comply with these standards.

**6. COUNCIL ACTIVITIES RELATED TO THE ACTION PLAN**

- a. Supply tools, herbicide and materials within the constraints of budget
- b. Training and technical advice
- c. Administration support
- d. Assistance with grant applications, administration and management.
- e. Assistance with events
- f. Assistance from Council's Bush Regenerator staff as resources allow
- g. Assistance with sourcing and/or propagating plants

**7. POSSIBLE FUTURE FUNDING APPLICATIONS**

<b>Project</b>
Rehabilitation of various sites plus community education
Weed control on community land between Bomaderry Creek and the Princes Highway.

**8. REVIEW**

This plan will be reviewed in six years but can be reviewed sooner if agreed.



## 9. REGIONAL MANAGEMENT PLANS OR STRATEGIES

<b>Name of document</b>	<b>Year it was produced</b>	<b>Produced by</b>
Plan of Management – Bomaderry Creek Regional Park	October 2016	NSW National Parks & Wildlife Service
Plan of Management – Bomaderry Creek Regional Park	October 2016	NSW National Parks & Wildlife Service
Generic Community Land Plan of Management Natural Areas No.7	2001 – last updated 2016	Shoalhaven City Council
Condition & Management Needs of <i>Zieria baeuerlenii</i>	2014	Terry Barratt for SCC & Australian Conservation Foundation
National Recovery Plan for the Bomaderry Zieria ( <i>Zieria baeuerlenii</i> )	2010	Dept of Environment, Climate Change and Water
Shoalhaven Walking Track Strategy	2010	Shoalhaven City Council
Bomaderry Creek Bushland – Weeds of Crown & Council Land	July 2008	Terry Barratt for Bomaderry Creek Landcare/Bushcare Group
Condition & Management Needs of <i>Zieria baeuerlenii</i>	2007	Terry Barratt
Bomaderry Regional Park Fire Management Strategy	July 2006	Department of Environment Climate Change and Water
Bomaderry Creek Regional Park Weed Management Plan	March 2004	Department of Environment Climate Change and Water

## 10. BUSHCARE SITE WEED LIST

Botanical	Common
<i>Acetosa sagitta</i>	Turkey Rhubarb
<i>Agapanthus orientalis</i>	Agapanthus
<i>Ageratina adenophora</i>	Crofton Weed
<i>Ageratina riparia</i>	Mist Flower
<i>Aloe sp</i>	Aloe
<i>Andropogon virginicus</i>	Whiskey Grass
<i>Anredera cordifolia</i>	Madeira Vine
<i>Araucaria heterophylla</i>	Norfolk Island Pine
<i>Araujia hortorum</i>	Moth Plant
<i>Araujia hortorum</i>	Moth Plant
<i>Arundo donax</i>	Giant Reed
<i>Arundo donax</i>	Giant Reed
<i>Asparagus aethiopicus</i>	Ground asparagus
<i>Asparagus scandens</i>	Climbing asparagus
<i>Bidens pilosa</i>	Cobblers Peg
<i>Bryophyllum delagoense</i>	Mother of Millions
<i>Canna indica</i>	Indian shot
<i>Cerastium glomeratum</i>	Mouse-eared Chickweed
<i>Chlorophytum comosum</i>	Spider Plant
<i>Cinnamomum camphora</i>	Camphor Laurel
<i>Coryza bonariensis</i>	Flaxleaf Fleabane
<i>Coreopsis comosum</i>	Coreopsis
<i>Crassula multicava</i>	Shade crassula
<i>Crocsmia x crocosmiiflora</i>	Montbrecia
<i>Cynodon dactylon</i>	Common couch
<i>Delairea odorata</i>	Cape Ivy
<i>Dipogon lignosus</i>	Dolichos pea
<i>Epidendrum radicans</i>	Crucifix Orchid
<i>Erythrina X sykesii</i>	Coral tree
<i>Fumaria muralis</i>	Wall Fumitory
<i>Gazania rigens</i>	Gazabia
<i>Hedera helix</i>	English Ivy
<i>Hedychium gardnerianum</i>	Ginger Lily
<i>Hydrocotyle bonariensis</i>	Pennywort
<i>Hypochaeris radicata</i>	Flatweed
<i>Ipomoea cairica</i>	Morning glory
<i>Jacaranda mimosifolia</i>	Jacaranda
<i>Jasminum polyanthemum</i>	Jasmine
<i>Lagunaria patersoniae</i>	Norfolk Island Hibiscus
<i>Lantana camara</i>	Lantana
<i>Ligustrum lucidum</i>	Broad-leaved Privet
<i>Ligustrum sinense</i>	Narrow-leaved Privet
<i>Lilium formosanum</i>	Formosan Lily
<i>Lonicera japonica</i>	Japanese Honeysuckle
<i>Monstera deliciosa</i>	Fruit Salad Plant
<i>Morus nigra</i>	Black Mulberry
<i>Nandina domestica</i>	Sacred Bamboo
<i>Nephrolepis cordifolia</i>	Fishbone Fern
<i>Nerium oleander</i>	Oleander
<i>Nicotiana glauca</i>	Tree Tobacco
<i>Ochna serrulata</i>	Mickey Mouse Plant

<b>Botanical</b>	<b>Common</b>
<i>Olea europea subsp. africana</i>	Common Olive
<i>Opuntia vulgaris</i>	Prickly Pear
<i>Osteospermum fruticosum</i>	Shrubby daisybush
<i>Oxalis pes-caprae</i>	Soursob
<i>Paspalum urvillei</i>	Vasey Grass
<i>Passiflora edulis</i>	Passionfruit
<i>Pelargonium spp.</i>	Pelargonium
<i>Pennisetum clandestinum</i>	Kikuyu
<i>Plantago lanceolata</i>	Lambs Tongue
<i>Plectranthus verticillatus</i>	Swedish Ivy
<i>Rubus fruticosus</i>	Blackberry
<i>Schefflera actinophylla</i>	Umbrella Tree
<i>Sedum dendroideum</i>	Stonecrop
<i>Senecio madagacariensis</i>	Fireweed
<i>Senna multiglandulosa</i>	Downy Senna
<i>Senna pendula var. glabrata</i>	Easter Senna
<i>Senna septemtrionalis</i>	Arsenic Bush
<i>Sida rhombifolia</i>	Paddys Lucerne
<i>Sporobolus fertilis</i>	Giant Parramatta Grass
<i>Stenotaphrum secundatum</i>	Buffalo grass
<i>Thunbergia alata</i>	Black-eyed Susan
<i>Tradescantia albiflora</i>	Trad
<i>Tropaeolum majus</i>	Nasturtium
<i>Verbena bonariensis</i>	Purple-top
<i>Vicia sativa subsp. angustifolia</i>	Narrow-leaved Vetch
<i>Vicia sativa subsp. sativa</i>	Common vetch
<i>Wisteria floribunda</i>	Japanese Wisteria

**PLANTS OF BOMADERRY CREEK BUSHLAND - Terry Barratt**

<b>CLASS</b>	<b>FAMILY</b>	<b>BOTANICAL NAME</b>	<b>COMMON NAME</b>
<b>SEEDLESS PLANTS</b>			
<b>Psilopsida (Fork Ferns)</b>	<b>Psilotaceae</b>	<i>Psilotum nudum</i>	<b>Skeleton Fork Fern</b>
<b>Lycopsida</b>	<b>Selaginellaceae</b>	<i>Selaginella uliginosa</i>	
<b>Filicopsida (Ferns)</b>	<b>Adiantaceae</b>	<i>Adiantum aethiopicum</i>	<b>Common Maidenhair Fern</b>
		<i>Adiantum formosum</i>	<b>Giant Maidenhair Fern</b>
		<i>Adiantum hispidulum</i>	<b>Rough Maidenhair</b>
	<b>Aspleniaceae</b>	<i>Asplenium flabellifolium</i>	<b>Necklace Fern</b>
	<b>Blechnaceae</b>	<i>Blechnum ambiguum</i>	<b>Gristle Fern</b>
		<i>Blechnum cartilagineum</i>	<b>Fishbone Water Fern</b>
		<i>Blechnum nudum</i>	<b>Soft Water Fern</b>
		<i>Blechnum minus</i>	<b>Rasp Fern</b>
		<i>Doodia aspera</i>	<b>Common Rasp Fern</b>
		<i>Doodia media</i>	
<b>Cyatheaceae</b>	<i>Cyathea australis</i>	<b>Rough Tree-fern</b>	
<b>Davalliaceae</b>	<i>Davallia pyxidata</i>	<b>Hare's Foot Fern</b>	
	<i>*Nephrolepis cordifolia</i>	<b>Fishbone Fern</b>	
<b>Dennstaedtiaceae</b>	<i>Pteridium esculentum</i>	<b>Bracken</b>	

## PLANTS OF BOMADERRY CREEK BUSHLAND

CLASS	FAMILY	BOTANICAL NAME	COMMON NAME
	Dicksoniaceae	<i>Calochlaena dubia</i>	Common Ground Fern
	Gleicheniaceae	<i>Gleichenia dicarpa</i> <i>Sticherus flabellatus</i>	Bead Fern Umbrella Fern
	Hymenophyllaceae	<i>Hymenophyllum cupressiforme</i>	Filmy Fern
	Lindsaeaceae	<i>Lindsaea linearis</i> <i>Lindsaea microphylla</i>	Screw Fern Lacy Wedge Fern
	Osmundaceae	<i>Todea barbara</i>	King Fern
	Polypodiaceae	<i>Pyrrosia rupestris</i>	Rock Felt-fern
	Pteridaceae	<i>Pteris tremula</i>	Tender Brake
	Schizaeaceae	<i>Schizaea bifida</i>	Comb Fern
	Sinopteridaceae	<i>Cheilanthes sieberi</i> <i>Pellaea falcata</i> var <i>falcata</i>	Rock Fern Sickle Fern
	Thelypteridaceae	<i>Christella dentata</i>	
<b>SEED PLANTS</b>			
Cycadopsida (Cycads)	Zamiaceae	<i>Macrozamia communis</i>	Burrawang

## PLANTS OF BOMADERRY CREEK BUSHLAND

CLASS	FAMILY	BOTANICAL NAME	COMMON NAME
Coniferopsida (Conifers)	Araucariaceae	<i>*Araucaria heterophylla</i>	Norfolk Island Pine
	Cupressaceae	<i>Callitris</i> sp.	Cyprus Pine
Magnoliopsida (Flowering Plants)			
Subclass: Magnoliidae (Dicotyledons)			
	Acanthaceae	<i>Brunoniella pumilio</i> <i>*Thumbergia alata</i> <i>Pseuderanthemum variabile</i>	Dwarf Blue Trumpet Black-eyed Susan Pastel Flower
	Anacardiaceae	<i>*Toxicodendron succedaneum</i>	Rhus Tree
	Anthericeae	<i>*Chlorophytum comosum</i>	Spider Plant
	Apiaceae	<i>Actinotus helianthi</i> <i>Actinotus minor</i> <i>Centella asiatica</i> <i>*Hydrocotyle bonariensis</i> <i>*Hydrocotyle pedicellosa</i> <i>Platysace lanceolata</i> <i>Platysace linearifolia</i>	Flannel Flower Minor Flannel Flower Pennywort Pennywort Shrubby Platysace
	Apocynaceae	<i>*Araujia sericiflora</i> <i>*Gomphocarpus fruticosus</i> <i>Parsonsia straminea</i>	Moth Vine Narrow-leaved Cotton Bush Common Silk Pod

## PLANTS OF BOMADERRY CREEK BUSHLAND

CLASS	FAMILY	BOTANICAL NAME	COMMON NAME
		<i>*Vinca major</i>	Periwinkle
	Araliaceae	<i>*Schefflera actinophylla</i> <i>*Hedera helix</i>	Umbrella Tree English Ivy
	Asclepiadaceae	<i>*Araujia sericifera</i> <i>Marsdenia rostrata</i> <i>Marsdenia suaveolens</i> <i>Tylophora barbata</i>	Moth Vine Common Milk Vine Sweet-scented Milk Vine Bearded Tylophora
	Asteraceae	<i>*Ageratina adenophora</i> <i>*Ageratina riparia</i> <i>*Bidens pilosa</i> <i>*Bidens tripartite</i> <i>Cassinia aculeata</i> <i>*Chrysanthemum coronarium</i> <i>*Cirsium vulgare</i> <i>*Conyza bonariensis</i> <i>*Coreopsis lanceolata</i> <i>*Crassocephalum crepidioides</i> <i>*Delairea odorata</i> <i>Gnaphalium sphaericum</i> <i>Helichrysum elatum</i> <i>*Hypochoeris radicata</i> <i>Lagenifera stipitata</i> <i>Olearia microphylla</i> <i>Olearia tomentosa</i> <i>Olearia viscidula</i>	Crofton Weed Mistflower Cobblers Peg Burr Marigold Cauliflower Bush Summer Chrysanthemum Spear Thistle Flaxleaf Fleabane Coreopsis Thickhead Cape Ivy Cudweed White Paper Daisy Flatweed Blue Bottle Daisy Sticky Daisybush

## PLANTS OF BOMADERRY CREEK BUSHLAND

CLASS	FAMILY	BOTANICAL NAME	COMMON NAME
		<i>*Onopordum acanthium</i>	Scotch Thistle
		<i>*Osteospermum ecklonis</i>	White Veldt Daisy
		<i>Ozothamnus diosmifolius</i>	White Dogwood
		<i>Senecio linearifolius</i>	
		<i>*Senecio madagascariensis</i>	Fireweed
		<i>*Senecio tamoides</i>	Climbing Groundsel
		<i>*Sigesbeckia orientalis</i>	Indian Weed
		<i>*Soliva sessilis</i>	Bindyi
		<i>*Targetes minuta</i>	Stinking Roger
		<i>*Xanthium orientale</i>	Californian Burr
	Balsaminaceae	<i>*Impatiens walleriana</i>	Balsam
	Basellaceae	<i>*Anredera cordifolia</i>	Madeira Vine
	Bignoniaceae	<i>Pandorea pandorana</i>	Wonga Wonga Vine
		<i>*Tarcaranda mimosifolia</i>	Jacaranda
		<i>*Tecoma capensis</i>	Cape Honeysuckle
	Brassicaceae	<i>*Cardamine hirsute</i>	Common Bittercress
	Cactaceae	<i>*Opuntia vulgaris</i>	Prickly Pear
	Campanulaceae	<i>Wahlenbergia gracilis</i>	Native Bluebell
	Caprifoliaceae	<i>*Lonicera japonica</i>	Japanese Honeysuckle
		<i>*Cerastium fomeratum</i>	Mouse-eared Chickweed



## PLANTS OF BOMADERRY CREEK BUSHLAND

CLASS	FAMILY	BOTANICAL NAME	COMMON NAME
	Caryophyllaceae	<i>Stellaria flaccida</i>	Starwort
	Casuarinaceae	<i>Allocasuarina distyla</i> <i>Allocasuarina littoralis</i> <i>Casuarina cunninghamiana</i>	Black Oak River Oak
	Chenopodiaceae	<i>Einardia hastata</i>	Berry Saltbush
	Chloanthaceae	<i>Chloanthes stoechadis</i>	Ice Flower
	Clusiaceae	<i>Hypericum gramineum</i>	Small St John's Wort
	Convolvulaceae	<i>Dichondra repens</i> * <i>Ipomoea purpurea</i> * <i>Ipomoea cairica</i>	Kidney Weed Morning Glory
	Crassulaceae	* <i>Bryophyllum delagoense</i> * <i>Crassula multicava</i> * <i>Crassula sarmentosa</i> <i>Crassula sieberiana</i> * <i>Crassula tetragona</i> * <i>Sedum dendroideum</i>	Mother-of-millions  Australian Stonecrop Stonecrop
	Cucurbitaceae	* <i>Sechium edule</i>	Choko
	Cunoniaceae	<i>Ceratopetalum apetalum</i> <i>Ceratopetalum gummiferum</i>	Coachwood Christmas Bush

## PLANTS OF BOMADERRY CREEK BUSHLAND

CLASS	FAMILY	BOTANICAL NAME	COMMON NAME
	Dilleniaceae	<i>Hibbertia aspera</i>	Guinea Flower
		<i>Hibbertia circumdans</i>	Guinea Flower
		<i>Hibbertia dentata</i>	Twining Guinea Flower
		<i>Hibbertia empetrifolia</i>	Guinea Flower
		<i>Hibbertia monogyna</i>	Guinea Flower
		<i>Hibbertia riparia</i>	Guinea Flower
		<i>Hibbertia scandens</i>	Twining Guinea Flower
		<i>Hibbertia empetrifolia</i>	Guinea Flower
		<i>Hibbertia stricta</i> subsp. <i>furcatula</i> <sup>#3</sup>	Guinea Flower
	Droseraceae	<i>Drosera auriculata</i>	Tall Sundew
		<i>Drosera spathulata</i>	Sundew
		<i>Drosera pigmaea</i>	Sundew
	Ebenaceae	<i>Diospyros australis</i>	Black Plum
	Elaeocarpaceae	<i>Elaeocarpus reticulatus</i>	Blueberry Ash
	Ericaceae - Styphelioideae	<i>Astroloma humisifusum</i>	Native Cranberry
		<i>Brachyloma daphnoides</i>	Daphne Heath
		<i>Epacris microphylla</i>	Coral Heath
		<i>Epacris pulchella</i>	
		<i>Leucopogon attenuatus</i>	
		<i>Leucopogon ericoides</i>	White Beard Heath
		<i>Leucopogon juniperinus</i>	Juniper Beard Heath

## PLANTS OF BOMADERRY CREEK BUSHLAND

CLASS	FAMILY	BOTANICAL NAME	COMMON NAME
		<i>Leucopogon lanceolatus</i>	Lance Beard Heath
		<i>Leucopogon neo-anglicus</i>	
		<i>Lissanthe strigosa</i>	Peach Heath
		<i>Styphelia triflora</i>	Five Corners
	<b>Euphorbiaceae</b>	<i>Amperea xiphioclada</i>	Broome Spurge
		<i>Breynia oblongifolia</i>	Coffee Bush
		<i>Claoxylon australe</i>	Brittlewood
		<i>Glochidion ferdinandi</i>	Cheese Tree
		<i>Micrantheum ericoides</i>	Heath Micrantheum
		<i>Omalthus populifolius</i>	Native Poplar
		<i>Phyllanthus gasstroemii</i>	
		<i>Phyllanthus hirtellus</i>	Thyme Spurge
		<i>Poranthera corymbosa</i>	
		<i>Poranthera microphylla</i>	Small Poranthera
		* <i>Ricinus communis</i>	Castor Oil Plant
	<b>Eupomatiaceae</b>	<i>Eupomatia laurina</i>	Bolwarra
	<b>Fabaceae</b>		
	<b>Subfamily:</b>		
	<b>Caesalpinioideae</b>	* <i>Senna pendula</i> var. <i>glabrata</i>	Cassia
	<b>Subfamily:</b>		
	<b>Faboideae</b>	<i>Aotus ericoides</i>	Common Aotus
		<i>Bossiaea ensata</i>	Egg and Bacon
		<i>Bossiaea heterophylla</i>	Egg and Bacon
		<i>Bossiaea obcordata</i>	Egg and Bacon

## PLANTS OF BOMADERRY CREEK BUSHLAND

CLASS	FAMILY	BOTANICAL NAME	COMMON NAME
		<i>Daviesia acicularis</i>	Bitter Pea
		<i>Daviesia alata</i>	Winged Bitter Pea
		<i>Daviesia ulicifolia</i>	Gorse Bitter Pea
		<i>Dillwynia ramosissima</i>	Bushy Parrot Pea
		* <i>Erythrina x sykesii</i>	Coral Tree
		<i>Glycine clandestina</i>	Twining Glycine
		<i>Glycine tabacina</i>	Variable Glycine
		<i>Gompholobium glabratum</i>	Dainty Wedge Pea
		<i>Gompholobium grandiflorum</i>	Large Wedge Pea
		<i>Gompholobium pinnatum</i>	Pinnate Wedge Pea
		<i>Goodia lotifolia</i>	
		<i>Hardenbergia violacea</i>	Purple Coral Pea
		<i>Hovea linearis</i>	
		<i>Hovea longifolia</i>	Rusty Pods
		<i>Kennedia rubicunda</i>	Dusky Coral Pea
		<i>Mirbelia rubiifolia</i>	Heathland Mirbelia
		<i>Oxylobium cordifolium</i>	Heart-leaved Shaggy Pea
		<i>Phyllota phylloides</i>	Heath Phyllota
		<i>Platylobium formosum</i>	Handsome Flat Pea
		<i>Podolobium illicifolium</i>	Prickly Shaggy Pea
		<i>Pultenaea blakelyi</i>	Blakely's Bush Pea
		<i>Pultenaea daphnoides</i>	Large-leaf Bush Pea
		<i>Pultenaea elliptica</i>	Wreath Bush Pea
		<i>Pultenaea linophylla</i>	Halo Bush Pea
		<i>Pultenaeae villosa</i>	Bush Pea
		<i>Viminaria juncea</i>	Golden Spray
		* <i>Vicia sativa</i> subsp. <i>angustifolia</i>	Narrow-leaved Vetch
		* <i>Vicia sativa</i> subsp. <i>sativa</i>	Common Vetch

## PLANTS OF BOMADERRY CREEK BUSHLAND

CLASS	FAMILY	BOTANICAL NAME	COMMON NAME
		<i>*Wisteria floribunda</i>	Japanese Wisteria
	<b>Subfamily:</b>		
	<b>Mimosoideae</b>	<i>*Acacia baileyana</i>	Cootamundra Wattle
		<i>Acacia binervata</i>	Two-veined Hickory
		<i>Acacia deanei</i>	Green Wattle
		<i>Acacia decurrens</i>	Black Wattle
		<i>Acacia falcata</i>	Sickle Wattle
		<i>Acacia filicifolia</i>	Fern-leaved Wattle
		<i>Acacia floribunda</i>	White Sally
		<i>Acacia irrorata</i>	Green Wattle
		<i>Acacia longifolia</i>	Sydney Golden Wattle
		<i>Acacia mearnsii</i>	Black Wattle
		<i>Acacia myrtifolia</i>	Red Stem Wattle
		<i>*Acacia podalyriifolia</i>	Q/land Silver Wattle
		<i>Acacia suaveolens</i>	Sweet-scented Wattle
		<i>Acacia subtilinervis</i> <sup>□</sup>	Many-veined Wattle
		<i>Acacia terminalis</i>	Sunshine Wattle
		<i>Acacia ulicifolia</i>	Prickly Moses
		<i>*Albizia lophantha</i>	Caped Wattle
	<b>Fumariaceae</b>	<i>*Fumaria muralis</i>	Wall Fumitory
		<i>*Fumaria officinalis</i>	
	<b>Gentianaceae</b>	<i>*Centaurium erythraea</i>	Common Centaury
	<b>Geraniaceae</b>	<i>Geranium potentilloides</i>	Native Geranium

## PLANTS OF BOMADERRY CREEK BUSHLAND

CLASS	FAMILY	BOTANICAL NAME	COMMON NAME
	Goodeniaceae	<i>Dampiera stricta</i> <i>Dampiera scottiana</i> <sup>□</sup> <i>Goodenia paniculata</i> <i>Goodenia hederacea</i> <i>Goodenia heterophylla</i> <i>Scaevola ramosissima</i>	Swamp Goodenia Violet-leaved Goodenia Variable-leaved Goodenia Hairy Fan Flower
	Haloragaceae	<i>Gonocarpus micranthus</i> <i>Gonocarpus tetragynus</i> <i>Gonocarpus teucrioides</i> <i>Haloragis sp</i>	Poverty Raspwort Raspwort
	Lamiaceae	<i>Clerodendrum tomentosum</i> <i>Plectranthus parviflorus</i> * <i>Plectranthus neochilus</i> * <i>Plectranthus verticillatus</i> <i>Prostanthera incana</i> * <i>Salvia sp.</i>	Hairy Clerodendrum Cockspur Flower  Velvet Mintbush
	Lauraceae	<i>Cassytha glabella</i> <i>Cassytha pubescens</i> * <i>Cinnamomum camphora</i> <i>Cryptocaria glaucescens</i> <i>Cryptocaria microneura</i> <i>Endiandra sieberi</i> <i>Litsea reticulata</i>	Slender Devil's Twine Downy Devil's Twine Camphor Laurel Jackwood Murrogun or Brown Jack Hard Corkwood Bolly Gum
	Lentibulariaceae	<i>Utricularia uliginosa</i>	Asian Bladderwort

## PLANTS OF BOMADERRY CREEK BUSHLAND

CLASS	FAMILY	BOTANICAL NAME	COMMON NAME
	Linaceae	<i>*Linum trigynum</i>	French Flax
	Lobeliaceae	<i>Lobelia dentata</i> <i>Pratia purpurascens</i> <i>Isotoma axillaris</i>	Whiteroot Rock Isotoma
	Loganiaceae	<i>Mitrasacme polymorpha</i>	Varied Mitrewort
	Loranthaceae	<i>Amyema congener</i> <i>Dendrophthoe vitellina</i>	Mistletoe Mistletoe
	Malaceae	<i>*Pyracantha angustifolia</i>	Firethorn
	Malvaceae	<i>*Sida rhombifolia</i>	Paddy's Lucerne
	Meliaceae	<i>Synoum glandulosum</i> <i>Toona ciliata</i>	Scentless Rosewood Red Cedar
	Menispermaceae	<i>Stephania japonica</i> var. <i>discolor</i>	Snake Vine
	Monimiaceae	<i>Wilkiea huegeliana</i>	Veiny Wilkiea
	Moraceae	<i>Ficus coronata</i> <i>Ficus rubiginosa</i> <i>Ficus superba</i> var. <i>heneana</i> <i>Malaisia scandens</i> <i>*Morus nigra</i>	Sandpaper Fig Port Jackson Fig Deciduous Fig Burny Vine Black Mulberry

## PLANTS OF BOMADERRY CREEK BUSHLAND

CLASS	FAMILY	BOTANICAL NAME	COMMON NAME
	Myrsinaceae	<i>*Ardisia crenata</i> <i>Myrsine variabilis</i> <i>Myrsine howittiana</i>	Coral Berry Muttonwood Brush Muttonwood
	Myrtaceae	<i>Angophora floribunda</i> <i>Backhousia myrtifolia</i> <i>Baekkea brevifolia</i> <i>Baekkea diosmifolia</i> <i>Callistemon linearis</i> <i>Callistemon rigidus</i> <i>Calytrix tetragona</i> <i>Corymbia gummifera</i> <i>Corymbia maculata</i> <i>Eucalyptus agglomerata</i> <i>Eucalyptus capitellata</i> <i>Eucalyptus consideniana</i> <i>Eucalyptus eugenioides</i> <i>Eucalyptus globoidea</i> <i>Eucalyptus imitans</i> <sup>□</sup> <i>Eucalyptus langleyi</i> <sup>#2 &amp; #5</sup> <i>Eucalyptus paniculata</i> <i>Eucalyptus piperita</i> <i>Eucalyptus punctata</i> <i>Eucalyptus robusta</i> <i>Eucalyptus saligna</i> <i>Eucalyptus saligna x botryoides</i>	Rough-barked Apple Ironwood; Grey Myrtle  Heath Myrtle Narrow-leaved Bottlebrush Stiff Bottlebrush Common Fringe Myrtle Red Bloodwood Spotted Gum Blue-leaved Stringybark Brown Stringybark Yertchuk Thin-leaved Stringybark White Stringybark  Nowra Mallee Grey Ironbark Sydney Peppermint Grey Gum Swamp Mahogany Sydney Blue Gum



## PLANTS OF BOMADERRY CREEK BUSHLAND

CLASS	FAMILY	BOTANICAL NAME	COMMON NAME
		<i>Eucalyptus scias</i>	Large-fruited Red
		subsp. <i>callimastha</i>	Mahogany
		<i>Eucalyptus sclerophylla</i>	Hard-leaved Scribbly Gum
		<i>Kunzea ambigua</i>	White Kunzea
		<i>Kunzea capitata</i>	Pink Buttons
		<i>Leptospermum arachnoides</i>	Spider Teatree
		<i>Leptospermum continentinale</i>	Prickly Teatree
		<i>Leptospermum juniperinum</i>	Prickly Teatree
		<i>Leptospermum polygalifolium</i>	Yellow Teatree
		<i>Leptospermum rotundifolium</i>	
		<i>Leptospermum sejunctum</i> <sup>□</sup>	Nowra Teatree
		<i>Leptospermum parvifolium</i>	
		<i>Leptospermum trinervium</i>	Paperbark Teatree
		<i>Melaleuca ericifolia</i>	Swamp Paperbark
		<i>Melaleuca hypericifolia</i>	Hairy Net Bush
		<i>Melaleuca linariifolia</i>	Snowstorm
		<i>Melaleuca styphelioides</i>	Prickly-leaved Paperbark
		<i>Melaleuca thymifolia</i>	Thyme Honey Myrtle
		<i>Micromyrtus ciliata</i>	
		<i>Rhodamnia rubescens</i>	Scrub Turpentine
		<i>Sanantha pluriflora</i>	Twiggy Heath Myrtle
		<i>Syncarpia glomulifera</i>	Turpentine
		<i>Syzygium smithii</i>	Lilly Pilly
		<i>Tristaniopsis collina</i>	Mountain Water Gum
		<i>Tristaniopsis laurina</i>	Water Gum
	Ochnaceae	* <i>Ochna serrulata</i>	Mickey Mouse Bush

## PLANTS OF BOMADERRY CREEK BUSHLAND

CLASS	FAMILY	BOTANICAL NAME	COMMON NAME
	Oleaceae	<i>*Jasminum polyanthum</i>	Jasmine
		<i>*Ligustrum lucidum</i>	Large-leaved Privet
		<i>*Ligustrum sinense</i>	Small-leaved Privet
		<i>Notelaea longifolia</i>	Large Mock-olive
		<i>Notelaea venosa</i>	Veined Mock-olive
		<i>*Olea europea</i> subsp. <i>africana</i>	Common Olive
	Onagraceae	<i>*Epilobium ciliatum</i>	Willowherb
	Passifloraceae	<i>Passiflora cinnabarina</i>	Crimson Passionflower
		<i>*Passiflora edulis</i>	Common Passionfruit
		<i>Passiflora herbertiana</i> subsp. <i>herbertiana</i>	Native Passionfruit
	Peperomiaceae	<i>Peperomia tetraphylla</i>	
	Phytolaccaceae	<i>*Phytolacca octandra</i>	Ink Weed
	Pittosporaceae	<i>Billardiera scandens</i>	Apple Dumpling
		<i>Bursaria lasiophylla</i> var. <i>atriplicina</i>	Blackthorn
		<i>Pittosporum revolutum</i>	Rough-fruited Pittosporum
		<i>Pittosporum undulatum</i>	Sweet Pittosporum
	Plantaginaceae	<i>*Plantago lanceolata</i>	Lamb's Tongue
	Polygalaceae	<i>Comesperma ericinum</i>	Match Head
		<i>Comesperma volubile</i>	Love Creeper

## PLANTS OF BOMADERRY CREEK BUSHLAND

CLASS	FAMILY	BOTANICAL NAME	COMMON NAME
	Polygonaceae	<i>*Acetosa sagittata</i>	Turkey Rhubarb
		<i>Persicaria hydropiper</i>	Water Pepper
		<i>Persicaria orientalis</i>	Princes Feathers
		<i>Persicaria praetermissa</i>	Smartweed
		<i>Persicaria strigosa</i>	Smartweed
		<i>*Rumex crispus</i>	Curled Dock
		<i>*Rumex pulcher</i>	Fiddle Dock
	Portulacaceae	<i>*Talinum paniculatum</i>	
		<i>Calandrinia pickeringii</i>	
	Primulaceae	<i>*Anagallis arvensis</i>	Scarlet Pimpernel
	Proteaceae	<i>Banksia ericifolia</i>	Heath-leaved Banksia
		<i>Banksia paludosa</i>	Swamp Banksia
		<i>Banksia serrata</i>	Old Man Banksia
		<i>Banksia spinulosa</i>	Spine-leaf Banksia
		<i>Conospermum longifolium</i>	
		subsp. <i>mediale</i>	Long-leaved Cone Seeds
		<i>Conospermum tenuifolium</i>	Cone Seeds
		<i>Grevillea arenaria</i>	
		<i>Grevillea linearifolia</i>	Linear-leaf Grevillea
		<i>*Grevillea robusta</i>	Silky Oak
		<i>Hakea dactyloides</i>	Finger Hakea
		<i>Hakea salicifolia</i>	Willow-leaved Hakea
		<i>Hakea sericea</i>	Needle Bush
		<i>Isopogon anemonifolius</i>	Drumsticks

## PLANTS OF BOMADERRY CREEK BUSHLAND

CLASS	FAMILY	BOTANICAL NAME	COMMON NAME
		<i>Lambertia formosa</i>	Mountain Devil
		<i>Lomatia ilicifolia</i>	Holly Lomatia
		<i>Persoonia levis</i>	Broad-leaved Geebung
		<i>Persoonia linearis</i>	Narrow-leaved Geebung
		<i>Persoonia mollis</i>	Soft-leaved Geebung
		<i>Petrophile pedunculata</i>	Stalked Conesticks
		<i>Petrophile pulchella</i>	Conesticks
		<i>Stenocarpus salignus</i>	Scrub Beefwood
		<i>Telopea speciosissima</i>	Waratah
	Ranunculaceae	<i>Clematis aristata</i>	Travellers Joy
	Rhamnaceae	<i>Alphitonia excelsa</i>	Red Ash
		<i>Pomaderris intermedia</i>	Pomaderris
	Ripogonaceae	<i>Ripogonum album</i>	White Supplejack
	Rosaceae	<i>Rubus hillii</i>	Wild Raspberry
		<i>Rubus parvifolius</i>	Native Raspberry
		* <i>Rubus discolor</i>	Blackberry
	Rubiaceae	<i>Melicope micrococca</i>	White Euodia
		<i>Morinda jasminoides</i>	Sweet Morinda
		<i>Opercularia varia</i>	Variable Stinkweed
		<i>Opercularia aspera</i>	Coarse Stinkweed
		<i>Pomax umbellata</i>	Pomax
		<i>Psychotria loniceroides</i>	Hairy Psychotria

## PLANTS OF BOMADERRY CREEK BUSHLAND

CLASS	FAMILY	BOTANICAL NAME	COMMON NAME
	Rutaceae	<i>Correa reflexa</i> <i>Crowea exalata</i> <i>Phebalium squamulosum</i> subsp. <i>squamulosum</i> <i>Philotheca salsolifolia</i> <i>Zieria bauerleni</i> <sup>#4</sup> <i>Zieria cytisoides</i> <i>Zieria pilosa</i> <i>Zieria smithii</i>	Native Fuchsia  Scaly Phebalium  Bomaderry Zieria Downy Zieria  Sandfly Zieria
	Salicaceae	* <i>Salix babylonica</i>	Weeping Willow
	Santalaceae	<i>Exocarpos cupressiformis</i> <i>Exocarpos strictus</i> <i>Leptomeria acida</i> <i>Santalum obtusifolium</i>	Native Cherry Dwarf Cherry Native Current Sandalwood
	Sapindaceae	<i>Alectryon subcinereus</i> <i>Dodonea triquetra</i> <i>Dodonea viscosa</i>	Wild Quince Long-leaved Hop Bush Giant HopBush
	Sapotaceae	<i>Pouteria australis</i>	Black Apple
	Solanaceae	* <i>Cestrum parqui</i> <i>Duboisia myoporoides</i> * <i>Lycium ferocissimum</i> * <i>Nicotiana glauca</i> * <i>Physalis peruviana</i>	Corkwood African Boxthorn Tree Tobacco Cape Gooseberry

## PLANTS OF BOMADERRY CREEK BUSHLAND

CLASS	FAMILY	BOTANICAL NAME	COMMON NAME
		* <i>Solanum americanum</i>	Glossy Nightshade
		* <i>Solanum pseudocapsicum</i>	Madeira Winter Cherry
		* <i>Solanum nigrum</i>	Blackberry Nightshade
		<i>Solanum prinophyllum</i>	Forest nightshade
	Sterculiaceae	<i>Lasiopetalum ferrugineum</i>	Brown Velvet Bush
		<i>Lasiopetalum parviflorum</i>	
		<i>Rulingia hermanniifolia</i> <sup>□</sup>	Illawarra Flame Tree
		<i>Brachychiton acerifolius</i>	
	Stylidiaceae	<i>Stylidium graminifolium</i>	Grass-leaved Trigger Plant
		<i>Stylidium laricifolium</i>	Tree Trigger Plant
	Thymelaeaceae	<i>Pimelea linifolia</i>	Slender Rice Flower
	Tremandraceae	<i>Tetratheca thymifolia</i>	Pink Bells
	Tropaeolaceae	* <i>Tropaeolum majus</i>	Nasturtium
	Ulmaceae	<i>Trema aspera</i>	Native Peach
	Urticaceae	<i>Dendrocnide excelsa</i>	Giant Stinging Tree
		<i>Urtica incisa</i>	Stinging Nettle
	Verbenaceae	* <i>Lantana camara</i>	Lantana
		* <i>Verbena bonariensis</i>	Purple Top
		* <i>Verbena brasiliensis</i>	

## PLANTS OF BOMADERRY CREEK BUSHLAND

CLASS	FAMILY	BOTANICAL NAME	COMMON NAME
	Violaceae	<i>Hymenanchera dentata</i> <i>Viola hederacea</i>	Tree Violet Ivy-leaved Violet
	Vitaceae	<i>Cayratia clematidea</i> <i>Cissus hypoglauca</i> <i>Cissus antartica</i>	Slender Grape Giant Water Vine Water Vine
	Winteraceae	<i>Tasmannia insipida</i>	Pepper Bush
Subclass: Liliidae (Monocotyledons)	Agavaceae	* <i>Yucca aloifolia</i>	Dwarf Yucca
	Alliaceae	* <i>Agapanthus orientalis</i>	Agapanthus
	Anthericaceae	<i>Caesia parviflora</i> * <i>Chlorophytum comosum</i> <i>Thysanotus tuberosus</i> <i>Laxmannia gracilis</i>	Pale Grass-lily Ribbon Grass Common Fringed Lily
	Aracea	* <i>Colocasia esculenta</i> <i>Gymnostachys anceps</i> * <i>Monstera deliciosa</i>	Taro Settlers Flax Fruit Salad Plant
	Arecaceae	<i>Livistona australis</i>	Cabbage Palm
	Asparagaceae	* <i>Protasparagus aethiopicus</i> * <i>Protasparagus virgatus</i>	Asparagus Fern

## PLANTS OF BOMADERRY CREEK BUSHLAND

CLASS	FAMILY	BOTANICAL NAME	COMMON NAME
	Asphodelaceae	* <i>Aloe saponaria</i>	Soap Aloe
	Cannaceae	* <i>Canna indica</i>	Indian Shot
	Centrolepiadaceae	<i>Centrolepis fascicularis</i>	
	Colchicaceae	<i>Burchardia umbellata</i>	Milkmaids
	Commelinaceae	<i>Commelina cyanea</i> * <i>Tradescantia albiflora</i> * <i>Tradescantia zebrina</i>	Blue-flowered Wandering Jew Wandering Jew or Trad
	Cyperaceae	<i>Caustis flexuosa</i> <i>Chorizandra sphaerocephala</i> <i>Cyathochaeta diandra</i> <i>Cyperus difformis</i> * <i>Cyperus eragrostis</i> <i>Cyperus flavidus</i> <i>Ghania siebriana</i> <i>Lepidosperma elatius</i> <i>Lepidosperma laterale</i> <i>Lipocarpa microcephala</i> <i>Ptilothrix deusta</i> <i>Schoenus melanostachys</i>	Curly Sedge  Sedge Dirty Dora Umbrella Sedge  Sword Sedge  Sword Rush
	Haemodoraceae	<i>Haemodorum corymbosum</i> <i>Haemodorum planifolium</i>	Bloodroot Bloodroot
	Hyacinthaceae	* <i>Ornithogalum longbracteatum</i>	Pregnant Onion



## PLANTS OF BOMADERRY CREEK BUSHLAND

CLASS	FAMILY	BOTANICAL NAME	COMMON NAME
	<b>Iridaceae</b>	<i>*Aristea ecklonii</i> <i>*Crocoshia x crocosmiiflora</i> <i>Patersonia sericea</i> <i>*Watsonia meriana</i>	Montbretia Native Iris Wild Watsonia
	<b>Juncaceae</b>	<i>Juncus</i> sp.	
	<b>Liliaceae</b>	<i>*Lilium formosanum</i>	Formosa Lily
	<b>Lomandraceae</b>	<i>Lomandra confertifolia</i> subsp. <i>rubiginosa</i> <i>Lomandra cylindrica</i> <i>Lomandra filiformis</i> <i>Lomandra glauca</i> <i>Lomandra longifolia</i> <i>Lomandra micrantha</i> <i>Lomandra multiflora</i> <i>Lomandra obliqua</i>	Matt Rush Mat Rush Wattle Mat Rush Pale Mat Rush Spiny-headed Mat Rush Small-flowered Mat Rush Many-flowered Mat Rush Twisted Mat Rush
	<b>Luzuriagaceae</b>	<i>Eustrephus latifolius</i> <i>Geitonoplesium cymosum</i>	Wombat Berry Scrambling Lilly
	<b>Nandinaceae</b>	<i>*Nandina domestica</i>	Sacred Bamboo
	<b>Orchidaceae</b>	<i>Acianthus exertus</i> <i>Acianthus fornicatus</i> <i>Adelopetalum exiguum</i> <sup>□</sup> <i>Caleana major</i>	Mosquito Orchid Pixie Caps Tiny Strand Orchid Flying Duck Orchid

## PLANTS OF BOMADERRY CREEK BUSHLAND

CLASS	FAMILY	BOTANICAL NAME	COMMON NAME
		<i>Calochilus paludosus</i>	Red Beard Orchid
		<i>Cestichis reflexa</i>	Leak Orchid
		<i>Corunastylis apostasioides</i>	Freak Midge Orchid
		<i>Corunastylis densa</i>	Dense Midge Orchid
		<i>Corunastylis filiformis</i>	Glandular Midge Orchid
		<i>Corunastylis fimbriatum</i>	Fringed Midge Orchid
		<i>Corunastylis laminatum</i>	Red Midge Orchid
		<i>Corunastylis woollsii</i>	Dark Midge Orchid
		<i>Corybas aconitiflorus</i>	Spurred Helmet Orchid
		<i>Cryptostylis erecta</i>	Bonnet Orchid
		<i>Cryptostylis subulata</i>	Large Tongue Orchid
		<i>Cymbidium suave</i>	Grassy Boot-lip Orchid
		<i>Diplodium obtusum</i>	Blunt-tongue Greenhood
		<i>Dipodium punctatum</i>	Blotched Hyacinth Orchid
		<i>Dipodium variegatum</i>	Slender Hyacinth Orchid
		<i>Diuris sulphurea</i>	Tiger Orchid
		<i>Dockrillia linguiformis</i>	Thumbnail Orchid
		<i>Dockrillia pugioniformis</i>	Dagger Orchid
		<i>Dockrillia striolata</i>	Yellow Rock Orchid
		* <i>Epidendrum radicans</i>	Crucifix Orchid
		<i>Eriochilus petricola</i>	Parson's Bands
		<i>Genoplesium baueri</i> <sup>#3</sup>	Brittle Midge Orchid
		<i>Glossodia major</i>	Waxlip Orchid
		<i>Oxysepala shepherdii</i> <sup>□</sup>	Wheat-leaf Rope Orchid
		<i>Orthoceras strictum</i>	Horned Orchid
		<i>Plectorrhiza tridentata</i>	Tangle Root Orchid
		<i>Prasophyllum brevilabre</i>	Short-lipped Leek Orchid
		<i>Pterostylis curta</i>	Blunt Greenhood

## PLANTS OF BOMADERRY CREEK BUSHLAND

CLASS	FAMILY	BOTANICAL NAME	COMMON NAME
		<i>Pterostylis nutans</i>	Nodding Greenhood
		<i>Sarcochilus hillii</i>	Myrtle Bells
		<i>Specularantha parviflora</i>	Tiny Greenhood
		<i>Spiranthes australis</i>	Ladies' Tresses
		<i>Thelychiton epiphyticus</i>	Illawarra Rock Orchid
		<i>Thelychiton speciosus</i>	Sydney Rock Orchid
		<i>Thelymitra ixioides</i>	Spotted Sun Orchid
		<i>Thelymitra carnea</i>	Tiny Sun Orchid
	Phormiaceae	<i>Dianella caerulea</i>	Flax Lily
	Poaceae	* <i>Andropogon virginicus</i>	Whisky Grass
		<i>Anisopogon avenaceus</i>	Oat Spear Grass
		<i>Aristida ramosa</i>	Three-awned Spear Grass
		<i>Aristida vagans</i>	Three-awned Spear Grass
		* <i>Arundo donax</i>	Giant Reed
		<i>Austrostipa</i> spp. 1 & 2	Spear Grass
		<i>Austrodanthonia tenuior</i>	Wallaby Grass
		* <i>Axonopus affinis</i>	Narrow-leaved Carpet Grass
		* <i>Bambusa</i> sp.	Bamboo
		* <i>Chloris gayana</i>	Rhodes Grass
		* <i>Cortaderia selloana</i>	Pampas Grass
		<i>Cymbopogon refractus</i>	Barb-wire Grass
		* <i>Cynodon dactylon</i>	Common Couch
		<i>Danthonia</i> sp.	Wallaby Grass
		<i>Dichelachne micrantha</i>	Short-hair Plume Grass
		<i>Digitaria parviflora</i>	Small-flowered Finger Grass
		<i>Echinopogon caespitosus</i>	Tufted Hedgehog Grass
		<i>Entolasia marginata</i>	Spreading Panic

## PLANTS OF BOMADERRY CREEK BUSHLAND

CLASS	FAMILY	BOTANICAL NAME	COMMON NAME
		<i>Entolasia stricta</i>	Wiry Panic
		<i>Eragrostis benthamii</i>	Bentham's Love Grass
		<i>Eragrostis brownii</i>	Brown's Love Grass
		* <i>Eragrostis curvula</i>	African Love Grass
		<i>Eragrostis leptostachya</i>	Paddock Love Grass
		<i>Imperata cylindrica var major</i>	Bladey Grass
		* <i>Melinis repens</i>	Natal Red Grass
		<i>Microlaena stipoides</i>	Weeping Grass
		<i>Oplismenus aemulus</i>	Basket Grass
		<i>Oplismenus imbecillis</i>	Pademelon Weeping Grass
		* <i>Paspalum dilatatum</i>	Paspalum
		* <i>Paspalum urvillei</i>	Vasey Grass
		* <i>Pennisetum clandestinum</i>	Kykuyu Grass
		* <i>Setaria gracilis</i>	Slender Pigeon Grass
		* <i>Sporobolus africanus</i>	Parramatta Grass
		* <i>Sporobolus fertilis</i>	Giant Parramatta Grass
		* <i>Sporobolus indicus</i>	
		* <i>Stenotaphrum secundatum</i>	Buffalo
		<i>Stipa</i> sp.	Spear Grass
		<i>Tetrarrhena juncea</i>	Wiry Rice Grass
		<i>Themeda australis</i>	Kangaroo Grass
	Restionaceae	<i>Empodisma minus</i>	
		<i>Leptocarpus tenax</i>	
		<i>Lepyrodia scariosa</i>	Scale Rush
		<i>Lepyrodia anarthria</i>	
	Ripogonaceae	<i>Ripogonum album</i>	White Supplejack

## PLANTS OF BOMADERRY CREEK BUSHLAND

CLASS	FAMILY	BOTANICAL NAME	COMMON NAME
	Smilacaceae	<i>Smilax australis</i> <i>Smilax glyciphylla</i>	Sarsaparilla Thornless Sarsaparilla
	Typhaceae	<i>Typha orientalis</i>	Broad-leaved Cumbungi
	Uvulariaceae	<i>Schelhammera undulata</i>	
	Xanthorrhoeaceae	<i>Xanthorrhoea resinifera</i>	Grass Tree
	Xyridaceae	<i>Xyris juncea</i> <i>Xyris complanata</i>	
	Zingiberaceae	* <i>Hedychium gardnerianum</i>	Ginger Lily

## BRYOPHYTES (Mosses)

*Hypnodendron vitiense*  
*Polytrichum juniperinum*  
*Racomitrium crispulum* var. *crispulum*

## LICHENS

Coral Lichen  
*Cladia retipora*  
*Cladonia chlorophaea*

## FUNGI

Agarics (fungi with gills)

*Aminita xanthocephala*  
*Paxillus infundibuliformis*

## PLANTS OF BOMADERRY CREEK BUSHLAND

CLASS	FAMILY	BOTANICAL NAME	COMMON NAME
-------	--------	----------------	-------------

Clavarias (coral fungi)*Clavaria amoena*Polypores (fungi with pores)*Pycnoporus coccineus*Phalloids (Stinkhorns)*Aseroe rubra*

Starfish Fungus

SUMMARY

Vascular plants: 549 species in 141 families (132 weed species – 24%)

Mosses: 3 species

Lichens: 2 species

Fungi: 5 species

\* Introduced Species

□ Botanically significant species

#1 Vulnerable Species (NSW Threatened Species Conservation (TSC) Act)

#2 Vulnerable Species (NSW TSC Act &amp; Aust. Environmental Protection &amp; Biodiversity Conservation (EPBC) Act)

#3 Endangered Species (NSW TSC)

#4 Endangered Species (NSW TSC Act and Aust. EPBC Act)

#5 Endangered Population in Bomaderry Creek Bushland (NSW TSC Act)