



**BAWLEY POINT KIOLOA COMMUNITY ASSOCIATION GRAFFITI
PARKCARE ACTION PLAN**

Document Number: D17/113992 • **Adopted:** 21/8/2018 • **Minute Number:** MIN18.629 •
File: 37850e • **Produced By:** Assets & Works Group • **Review Date:** 21/8/2021

CONTACT INFORMATION

Group Name:	Bawley Point Kioloa Community Association Graffiti Group
Contact:	Margaret Hamon
Tel:	4457 1129 / 0417 372 946
Email:	marghamon2@bigpond.com
Reserve Name:	All reserves in Bawley Point Kioloa
Location:	Bawley Point Kioloa
Reserve No:	BSU924
Land Tenure	Crown & Council

1. PARKCARE GROUP GOALS

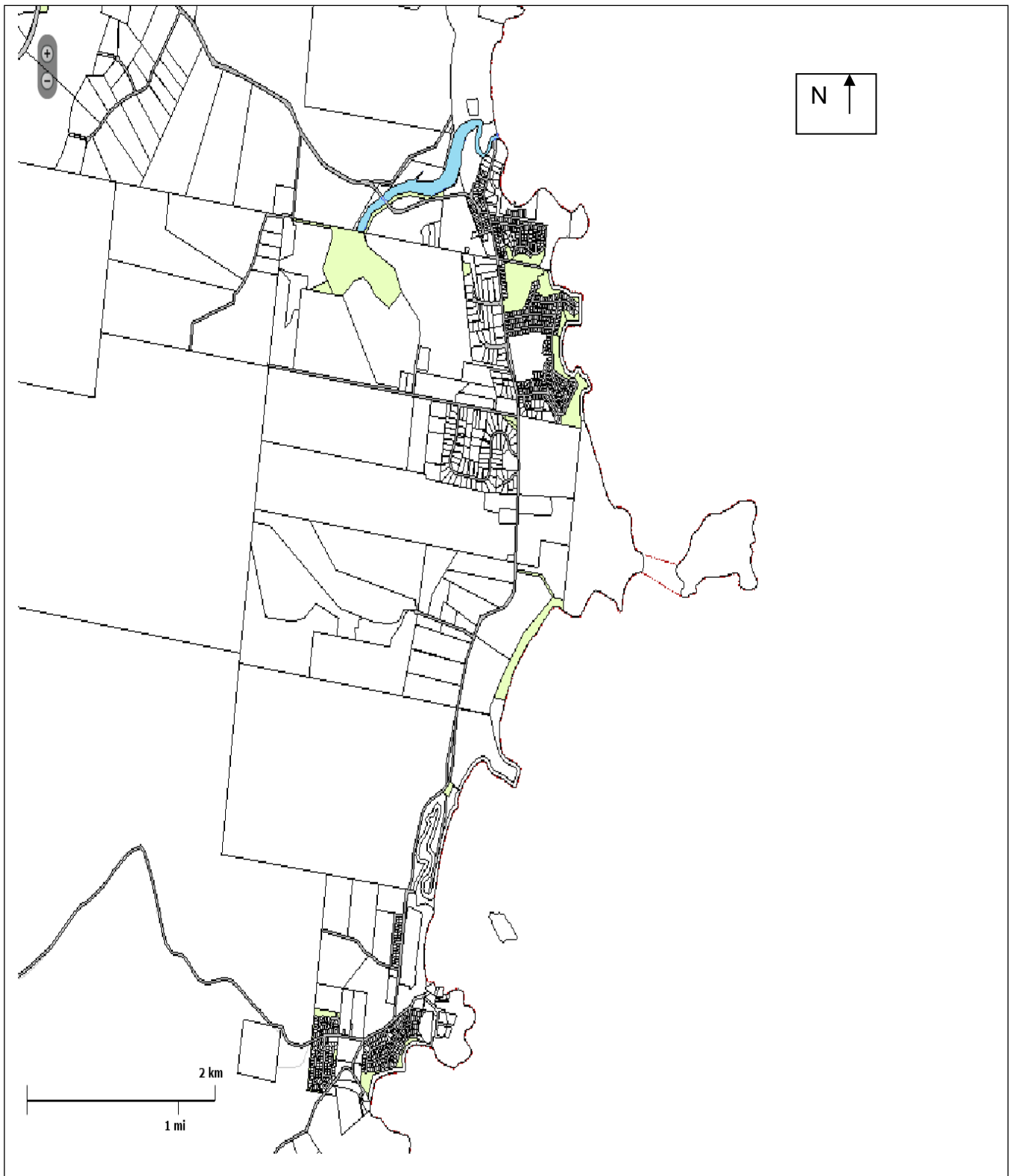
To remove and or cover graffiti in all reserves in the Bawley Point Kioloa area.

**2. SHOALHAVEN PARKCARE GROUP ACTIVITIES TABLE (to be in conjunction
with attached site map)**

**NOTE: Priority should be rated as H = High (within 12 months); M = Medium
(1-3 years); L = Low**

GROUP ACTION	PRIORITY	METHOD	TIME
Remove and / or cover graffiti in all reserves	H	By hand, with graffiti removal products and pressure washer Painting with brushes and rollers	Ongoing

3. PARKCARE GROUP ACTION PLAN MAP



4. PARKCARE GROUP WHS & EQUIPMENT REQUIREMENTS

Type of Activity	Yes	SWMS name included
Footpath & Furnishings Cleaning	✓	SWMS1258
Park Furnishings and Play Equipment Maintenance	✓	SWMS1263

5. COUNCIL SUPPORT

Paints
Brushes
Rollers
Materials used for graffiti removal
Rubber gloves

6. HAS A SITE HAZARD AND RISK ASSESSMENT BEEN COMPLETED FOR THE PARKCARE SITES?

Yes

7. LIST THE PERSONAL PROTECTION EQUIPMENT REQUIRED FOR VOLUNTEERS WHILST WORKING ON THE SITE

PPE Equipment Required	Date issued
Safety Vests	As required
Gloves	As required
Sunscreen	As required
Insect repellent	As required
Safety Glasses	As required
Workers hats	As required

8. POSSIBLE FUTURE FUNDING

Project	Funding source
Nil	Nil

9. PLAN WILL BE REVIEWED EVERY THREE YEARS

10. PLEASE LIST OTHER LOCAL OR REGIONAL MANAGEMENT PLANS OR STRATEGIES THAT THIS PLAN RELATES TO

Name of document	Year it was produced	Produced by
Graffiti Policy	2013	Assets & Works
Draft Graffiti Management Plan	2013	Assets & Works

Parkcare Group Name: Bawley Point Kioloa Community Association Graffiti Group

Coordinator Name: Margaret Hamon

Signature:

Date:/...../.....