

Our Community's Plan for the Future

Leading the City's planning hierarchy, the Community Strategic Plan identifies the community's main priorities and expectations for the future and ways to achieve these goals.

What should be the future direction of Council? What are the community's key priorities and how would you like your rates to be spent? These are questions that Council is currently asking our community as part of the review of our key planning document - the Community Strategic Plan.

We are seeking your involvement in the creation of this plan and encourage you to head to our *Get Involved* page getinvolved.shoalhaven.nsw.gov.au to have your say on the future of the Shoalhaven.



Major achievements in 2016

Council completed a large number of projects across the City last year, including:

- Remediating Porters Creek Dam wall
- Constructing the new State Emergency Services (SES) shed and extending the Emergency Operations Centre
- Receiving a record level of grant funding (\$37M)
- Remaining a strong stand-alone Council
- Improving the South Nowra Freight Corridor at Flinders Road
- Dredging Sussex inlet, Lake Conjola and Currambene Creek for improved navigation
- Completing the Orion Beach around the Bay walk
- Revitalising waterfront areas and waterways in the Shoalhaven River, Crookhaven, Jervis Bay, Sanctuary Point and Sussex Inlet
- Extending Albatross Aviation Technology Park and taxiway
- Upgrading Turpentine Road
- Advancing the planning phase for the Resource Recovery Park for future waste management
- Revitalising Nowra CBD on Kinghorne Street and completing Stage 2 of Jellybean Park
- Starting construction on REMS Stage 1B - the biggest public works project undertaken by Council.



shoalhaven.nsw.gov.au  

council@shoalhaven.nsw.gov.au
Bridge Rd, Nowra NSW 2541 02 4429 3111
Deering St, Ulladulla NSW 2539 02 4429 8999

Address all correspondence to

The General Manager,
PO Box 42, Nowra NSW 2541 Australia
DX5323 Nowra Fax 02 4422 1816

Shoalhaven
City Council

Neighbourhood News

Summer 2017



Your rates, *everybody's* future



Your Council working for you

Get Involved

Council encourages our community to get involved with activities, engagements, decisions and events. Participate actively through:

Council Website

shoalhaven.nsw.gov.au

Learn more about Council's operations, projects, strategies, plans, latest news or pay your rates and Shoalhaven Water bills online.

Get Involved Community Portal

getinvolved.shoalhaven.nsw.gov.au

Participate in comments, polls and keep updated on major projects.

In Your Neighbourhood eNewsletter

Keep updated with a weekly email newsletter and find out more about Council decisions, information, projects and initiatives. Subscribe on the bottom of the home page at shoalhaven.nsw.gov.au

Council Facebook

[facebook.com/shoalhavencitycouncil](https://www.facebook.com/shoalhavencitycouncil)

Updated daily with news, interesting facts, events and projects.

Community Consultative Bodies (CCBs)

CCBs are town based community groups that provide their communities with information, focus on improvements and projects in their town. For a list of CCBs, visit shoalhaven.nsw.gov.au/My-Community/Residents-groups

Committees and Reference Groups

There are a number of committees and reference groups that you could join. Contact Council on T: 4429 3111

Enquiries

Send all your enquiries to council@shoalhaven.nsw.gov.au or contact T: 4429 3111

Helpful tools

Development Application Tracker

Are you interested in a Development Application (DA) in your area? Development application tracking allows you to track the progress of applications from lodgement through to determination.

shoalhaven.nsw.gov.au/Planning-and-Building/Development-application-tracking



Report an issue through Snap Send Solve

A free iPhone or Android App that lets you report issues and provide feedback to Council. The App determines your current Council area using your smartphone's GPS location. Capture and report issues easily including litter, damaged roads or footpaths, parking issues, street cleaning, trees and general requests. Download the App from shoalhaven.nsw.gov.au/My-Property/Reporting-a-Problem

Free eBooks and magazines

Shoalhaven Libraries offers free eBooks and audio books available to download at shoalhavenlibraries.com.au/I-Want-To/eBooks-Magazines

Get to know your Council

Shoalhaven City Council is made up of a Mayor and twelve Councillors. We introduced the newly elected Council in the last edition of the newsletter.

Your Councillors work on behalf of the Shoalhaven community to guide the development of local policies, set service standards and priorities, and monitor the performance of Council.

What is the role of a Councillor?

Councillors have a number of different roles, including acting as representatives, legislators, decision makers, strategists, mediators and financial overseers. Often, Councillors are required to perform many of these roles at the same time, which can be compared to wearing multiple hats at once.

For example, if Council has to decide on a particular planning matter, a Councillor may need to meet with residents who are concerned about the application (wearing their representative hat). They may also have to chair a consultation meeting about the application (mediator hat), and then sit as a member of the responsible authority or committee to make a decision according to the details of the application and whether it meets Council's planning requirements (judicial and administrative hats).

Given their many roles, it can be a challenge for Councillors to balance the diverse interests of their constituents (the residents who voted them in) with the best interests of the City as a whole.

As your local representatives, Councillors are your advocate for your community's priorities, projects and plans.

Contact a Councillor

shoalhaven.nsw.gov.au/My-Council/Councillors-Mayor



Your Council... Supporting you everyday...

From the moment you wake up and turn the tap on, to your journey to work, the library or school, until well after the street lights turn on at night, most of your daily activities involve the use of Council services and facilities.

Providing water



Rubbish removal



Development applications

Protecting our environment



Protecting our
pets and wildlife

Heritage

Bushcare



Animal shelter

Emergency service
management



Communication

Swimming pools

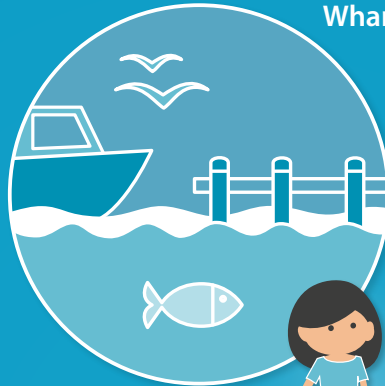
Safety

Bike paths

Town planning



Boat ramps



Wharfs



Playgrounds

Sporting fields



Health and fitness centres

Attractions

Visitor
information



Facilities

Beach access



Road safety

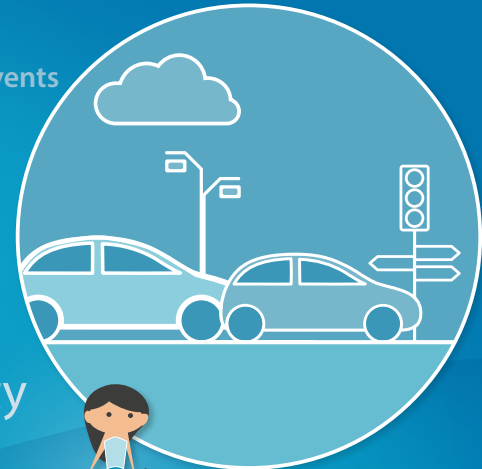
Community services

Recreation

Bridges, culverts and causeways

Roads and footpaths

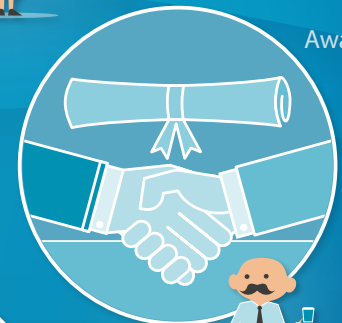
Events



Creating jobs

Business development

Advocacy



Awards

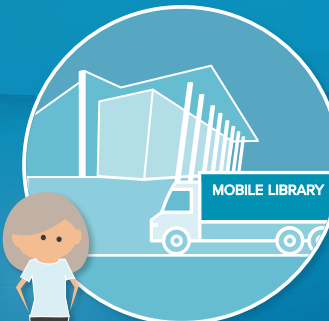
Libraries

Education programs

Arts

Culture

Entertainment



Community halls



...there's a lot we do to make the Shoalhaven a great place to live.