

Winter 2018 Edition



Bill Piggott leading a walk across Moyean Hill during Seniors' Week

In this issue ...

- Greetings
- Beating Around the
- Bush The Autumn that was
- Citizen Science - NatureMapr
- Safety
- What's On?
- Tree Planting at Riversdale
- Albatross - A Film by Chris Jordan - Huskisson Picture Theatre
- National Tree Day
- Weed Talk - Wintery weeds
- Boil the Billy

Greetings

Welcome to the first edition of Bushcare Links for 2018. Apologies for the long wait!

Well, winter is here and we've finally had some rain. It's great to see planting happening across a range of Bushcare sites and the recent rain is just what the doctor ordered.

Since starting in the role as Shoalhaven City Council's Bushcare Coordinator, I've been trying to get out to see as many sites as possible and meet volunteers. With over 60 Bushcare Groups throughout the City of Shoalhaven, this is taking some time! Quite a few of the groups have now taken the time to show me around and discuss various issues and success stories. This is really helpful, so thank you to all those groups and their coordinators.

I've been consistently impressed with the great improvements Bushcare volunteers are making. Included in this newsletter is a 'Beating around the Bush' – a photo gallery of just a snippet of the enormous amount of work being done across the region by volunteers. As always, a massive 'Thank You' to all the volunteers!

Along with the normal running of the Bushcare Program, some of the things that are happening at the moment include updating the Bushcare Policy and finalising some of the Bushcare Action Plans that had been reviewed last year. Four revised plans have recently been endorsed: Broughton Vale, Callala Boat Ramp Reserve, Tallyann Point (Basin View) and Mia Way (Culburra).

For those Bush-carers I haven't met – I hope to catch up soon!

Cheers

Pete Swanson
Bushcare Coordinator

Beating around the bush ...

(Please send in your photo for the next edition!)



There was a good turn out for the launch of Bangalee Bushcare Group's website:

<https://www.bangaleebushcare.org>



Members of Hyams Beach Bushcare Group - on a rainy day!



The opening of Callala Creek boardwalk was well attended



Ross working with the Lower Mulgen Creek Group



The Grotto gang have a well deserved high tea



Bangalee Bushcare Group's Len White where lantana once was



Frances from Mollymook Bushcare Group showing how to look after the tools



Narrawallee Bushcare Group having a well deserved cuppa



Some of the Mollymook group with weed bags and a baby!



Hyams Beach group checking recent plantings - doing very well considering the spring and summer that was



Bill Piggott led a walk across Moyean Hill during Senior's Week



Vincentia High students planting out an area at Heritage Estates

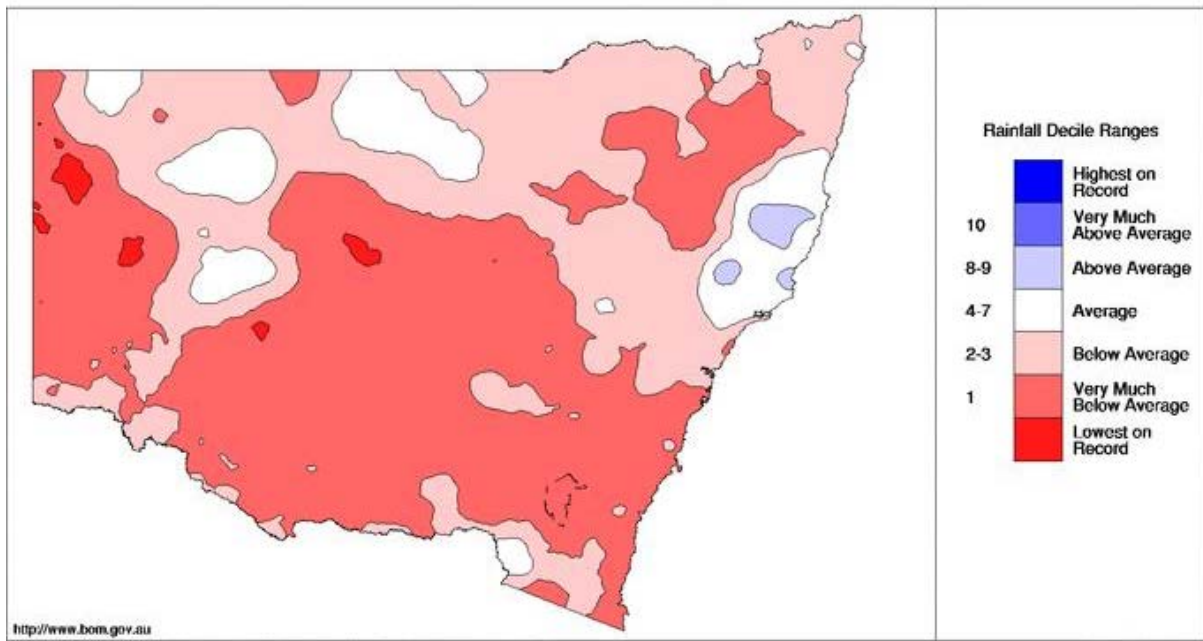
The Autumn that was

No surprises, the Shoalhaven, like a lot of NSW, was hotter and drier than normal over autumn.

These maps from the Bureau of Meteorology show a comparison of autumn's weather to the long-term record. White shows areas that the weather was similar to average and the other colours show that conditions were either above or below the average.

New South Wales Rainfall Deciles 1 March to 31 May 2018

Distribution Based on Gridded Data
Australian Bureau of Meteorology

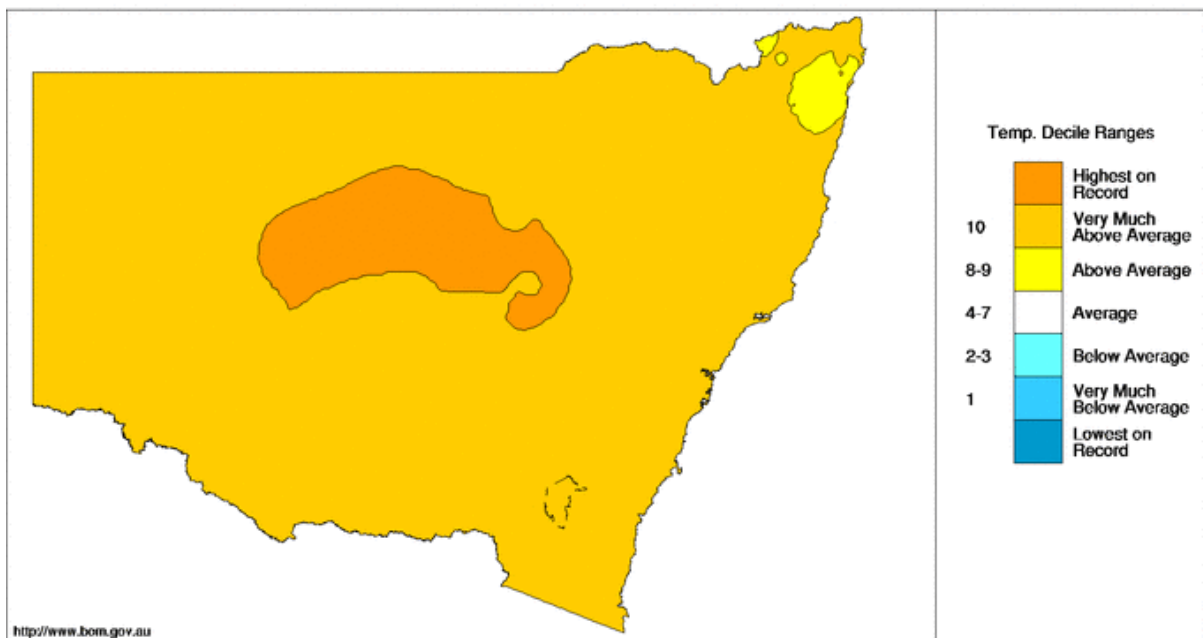


© Commonwealth of Australia 2018, Australian Bureau of Meteorology ID code: AWAP

Issued: 03/06/2018

Mean Temperature Deciles 1 March to 31 May 2018

Distribution Based on Gridded Data
Australian Bureau of Meteorology



© Commonwealth of Australia 2018, Australian Bureau of Meteorology ID code: AWAP

Issued: 05/06/2018



Citizen Science - NatureMap

Citizen science is helping to build our knowledge of wildlife living in our area.

The Atlas of Life Budawang Coast, covering Shoalhaven and Eurobodalla, has now launched a database of biodiversity for our region. The Atlas allows everyone to spend time in nature and record sightings of specimens of interest. A team of expert moderators identify or verify sightings of locally occurring wildlife and these are then uploaded to the national database, Atlas of Living Australia.

Sightings of species are recorded either from camera shots uploaded on your computer or via the Naturemapr app and your tablet or smartphone. You can record anything of interest.....plants, animals, birds, bugs, fungi, reptiles, the marine and freshwater environments, spiders, worms, fossils, tree hollows...

The Atlas also allows people to register sightings of weeds and feral animals and through doing this informs local natural resource managers in the management of these.

The Atlas is a tool that allows everybody in the community to learn about ecology and biodiversity. As it develops, we will be able to monitor changes in the natural environment over time. One project underway in the Atlas is mapping Glossy Black Cockatoos.

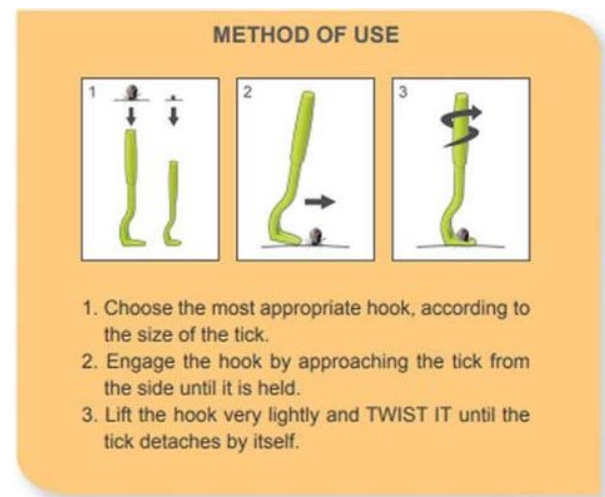
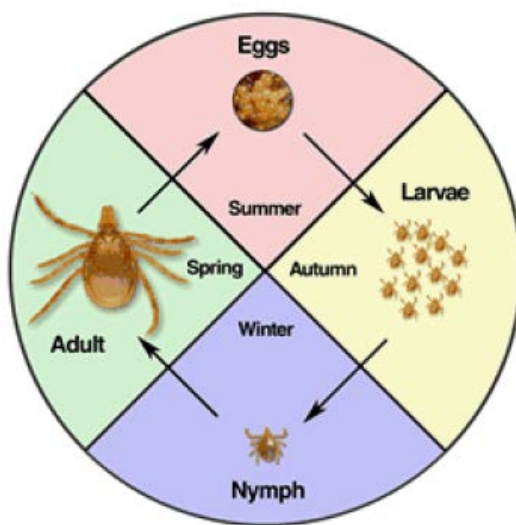
We encourage you to register and contribute to the Atlas. If you are passionate about local wildlife – please join us and contribute your knowledge to inform others.

We have plans to hold an information and training session in Nowra on 5 July - check our website <https://atlas-budawangcoast.naturemapr.org/> for details and to register.

Please contact budawangcoast@gmail.com or call Fiona Stewart on 0408110574



Ticks - There were two tick-bite incidents reported during May. No matter what time of year, please ensure that you wear suitable clothes, apply repellent and check yourselves after working. Please report any bites that result in significant symptoms or a visit to the doctor. NSW health have developed a [Tick Alert](#), which contains good information on the life cycle of ticks, reducing the likelihood of being bitten, how to remove them and the problems they can cause.



Tick Twisters are Council's preferred method for tick removal and are available to Bushcare groups on request

What's On

Sunday 17 June - Tree Planting at Riversdale



RIVERSDALE
170 RIVERSDALE ROAD, ILLAROO
9.30AM WORKING BEE
BRING A PLATE FOR LUNCH
1PM FINISH
SHOALHAVEN LANDCARE WILL
PROVIDE BBQ LUNCH

ALL WELCOME
TO REGISTER FOR WORKING BEE:
WWW.BUNDANON.COM.AU/SUPPORT-US
SEE:
[HTTPS://BUNDANON.COM.AU/RESEARCH-AND-PROJECTS/STUTTERING-FROG-PROJECT/](https://BUNDANON.COM.AU/RESEARCH-AND-PROJECTS/STUTTERING-FROG-PROJECT/)

 Shoalhaven
Landcare

BUNDANON TRUST

 NSW
GOVERNMENT

 NSW
Environmental
Trust

Thursday 28 June - "Albatross"

Shoalhaven
Transition inc



Presents **"Albatross"** at the Huskisson Picture Theatre

Thursday 28th June at 6.30 pm

Guest Speaker Anthony Hill from Plastic Pollution Solutions

Will run a Q&A after the film

Entry by donation



A Film by Chris Jordan

In the heart of the world's
greatest ocean, a story is
taking place that may
change the way you see
everything

You will witness their
dancing, their singing,
their beauty and grace and
be invited into the most
Intimate
aspects of their lives

Friday 27 July and Sunday 29 July - National Tree Day



Weed Talk - Wintery

Weeds

For weeds, the colder temperatures will mean most plant species will slow down their growth with the cold temperatures. This often means that chemical treatment may not be as effective.

You may notice some annual plants start growing. One example is *Watsonia*, a weed which grows from corms and bulbils (or cormils) with foliage appearing during the winter.

Flowering stems are produced in spring. Leaves and stems die off in late summer and autumn.

Watsonia is an erect perennial herb forming large clumps with strap-like leaves, slender reddish flowering stems 0.5 to 2m high, pink, orange or red flowers. Leaves are 20 to 80cm long, 2 to 5cm wide, light green, rigid, upright and shaped like the blade of a sword.

Wild *Watsonia* is mainly a weed of moist sites but can flourish in well-drained areas. The plant produces large numbers of bulbils, enabling it to become a very successful weed, forming dense stands that exclude native vegetation. Plants that develop from bulbils do not flower in the first year but produce their first corm, flowering in their second or third years. Corms and bulbils can remain dormant in the soil for a considerable period. It has been reported that only about 30% of the corms produce above-ground parts each year.

No viable seed is produced in this species. Small infestations can be controlled by digging out and removing corms before the new bulbils form. Chemical control can be done by wiping leaves with a glyphosate product or spraying between flowering and seed set.

Always apply herbicides as per labels or Australian Pesticides and Veterinary Medicines off-label permits and Shoalhaven City Council's Volunteer Induction Handbook.

If you need help identifying a plant contact your Bushcare Field Officer or Coordinator.



Wild Watsonia or Bulbil Watsonia



Corm (underground) and Bulbils (flowering stem)



Watsonia meriana (L.) Miller var. bulbilifera

Boil the Billy



Boil the billy is a segment devoted to the stories and tid-bits to share about what you have seen, discovered or heard lately at your Bushcare site. Please send in any interesting stories or pictures you may have for the next edition.

Remember reading about nesting boxes being installed within the Bangalay Sand Forest on the shores of Lake Wollumboola? Well, recently Nick and Frances checked the boxes, filming them using a camera on a pole. They found a Brown Antechinus in the bat box, a Common Ringtail Possum in a bird box, and a claw and whiskers of an unidentified animal in a bird box – suspected to be a brushtail possum. This is all very interesting and Frances and Rick are considering how to improve the layout of the nest boxes and are involving the local public school.



Brown Antechinus



Ringtail Possum

Bushcare Links is a quarterly newsletter of the Shoalhaven Bushcare Program which aims to support and inspire ecological restoration by community Bushcare Groups across the Shoalhaven LGA.

If you have something you would like to share, or have any inquiries on the content of this issue, you can email the Shoalhaven Bushcare Coordinator on bushcare@shoalhaven.nsw.gov.au

The deadline for the next edition is 5pm - 31 August 2018

environmental services

SHOALHAVEN CITY COUNCIL



© Shoalhaven City Council

[Preferences](#) | [Unsubscribe](#)

