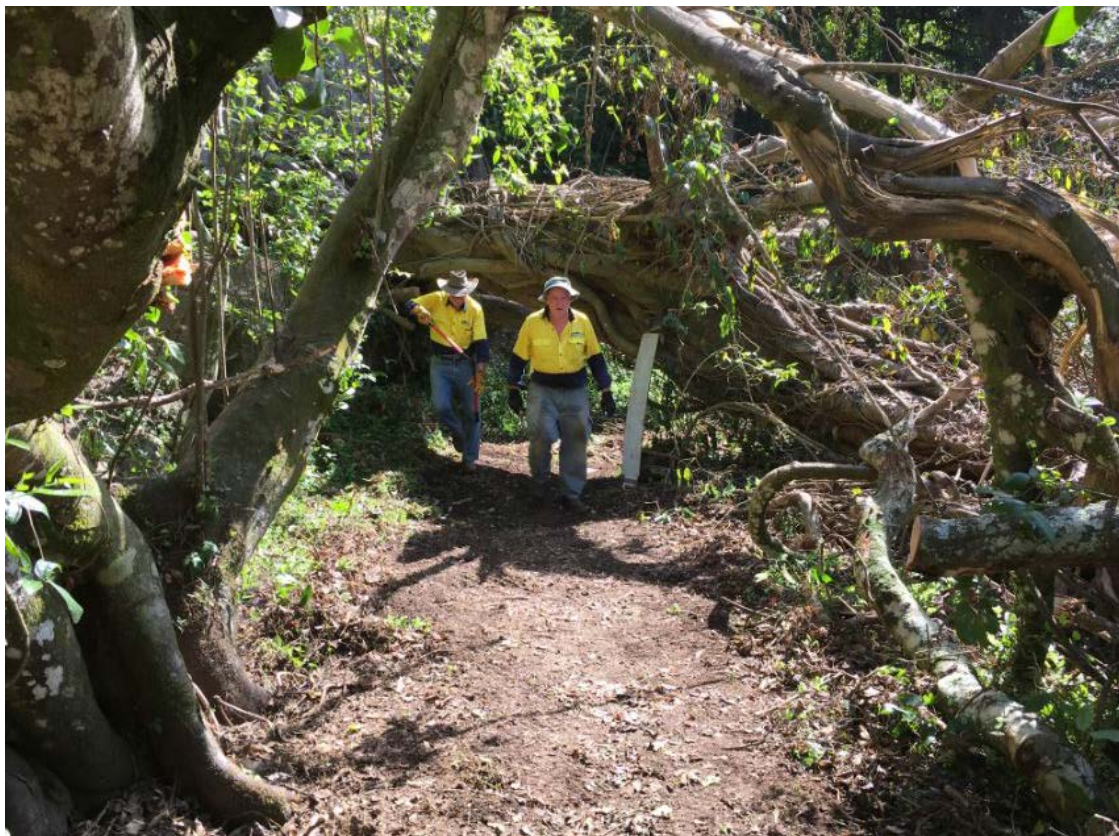


Summer 2019 Edition



Ron and Geoff retreat from fallen fig - The Grotto Bushcare Group

In this issue ...

- Greetings
- Beating Around the Bush
- Frogbit
- Bomaderry Zieria
- Safety
- The summer that was
- Weed Talk - Madeira vine
- Pile Burning
- What's On?

Greetings

Hello again to everyone involved in or interested in Shoalhaven Bushcare. I hope everyone is enjoying the cooler weather.

Thanks to everyone who came along to the Bushcare/Parkcare Christmas picnic, held at Narrawallee at the end of last year. It was well attended and great to see everyone there, including a few new faces.

Congratulations go to Ron Carberry, who has been successful in securing a permanent position with Council as a Ganger - Bush Regenerator. Ron's colleague, Ed Farrell, has been successful in securing a position with NSW National Parks, so Council's loss is NPWS gain! We are currently working to fill Ed's position.

As far as the program goes, Council's Bushcare Representative Group has been reviewing the Bushcare procedures following last year's policy review. A workshop was held with the Bushcare Representative Group in December which will provide good direction. Camp Quality and The Grotto Bushcare Group Action Plans have been recently reviewed for Council's consideration. The next Bushcare Group Action Plans to be reviewed are Millards Creek, Bomaderry Creek and Basin Bushcare.

Thanks to the Bushcare Group Coordinators who have recently sent in their working bee sheets.

Hope you enjoy this edition. Remember, if you're keen, any photos or articles will be gratefully received for our next newsletter! Thanks go to work experience student Joel Clifton, who produced the article on Madeira Vine.

Cheers

Pete Swanson
Bushcare Coordinator

Beating around the bush ...

(Please send in your photo for the next edition!)



Bomaderry Creek revegetation recovering after the fire



Christmas Picnic - Narrawallee Foreshore Reserve



Phillip, Kevin and Jim planning tree planting at Broughton Vale



Ron takes on fallen fig at the Grotto North Nowra

Chris with booming vegetation at Milton Rainforest



In search of Bomaderry Zieria



Jenny and Tony at Currarong



Ron and Geoff retreat from fallen fig

Frogbit

The aquatic weed Frogbit (*Limnobium laevigatum*) was last year found in Bomaderry. Frogbit is a floating freshwater plant from Central and South America that can rapidly invade and smother waterways. Plants can form into large mats of

runners and adult plants can develop very quickly. Juvenile plants have a great capacity for distribution in that they are small and can be easily and quickly carried along by water currents.

Plants float on the water surface and have smooth, rounded, fleshy green leaves up to 4cm across, with sponge-like sections on their undersides.

New occurrences are subject to an immediate eradication response. Please report any suspected occurrences of Frogbit to Council's Biosecurity Unit on 4429 3833.



Close up of Frogbit

Frogbit



Frogbit can cover water surfaces

Bomaderry Zieria follow-up

As previously reported, a major fire burnt through much of Bomaderry Creek Regional Park in August last year. This fire burnt all but two of the Bomaderry Zieria 'genets' (a genet being a group of genetically identical plants). The good news is

that with the rain received in spring and early summer, many of the plants have re-grown. Terry Barrett, who has been keeping a close eye on these plants, reports that all but two of the genets have re-sprouted and appear healthy. We will continue to work with OEH to monitor the population.

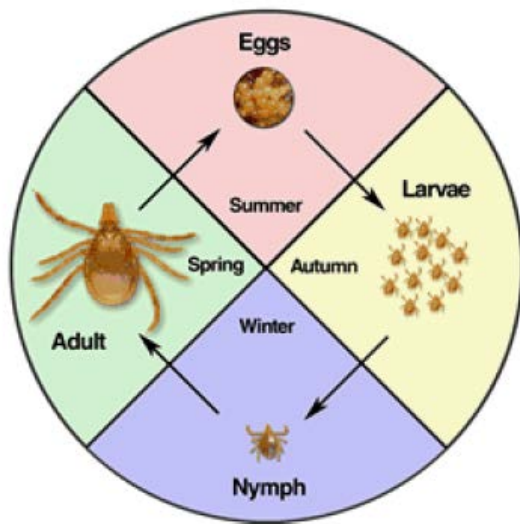


Bomaderry Zieria re-sprouting



Autumn is here, which means that larval stage of the tick occurs. The larvae is around 1mm and light brown in colour when not full of blood. This is followed in winter by the 'nymph' stage (around 2mm and pale brown). The larval and nymph stages can be treated by applying permethrin cream (e.g. scabies cream).

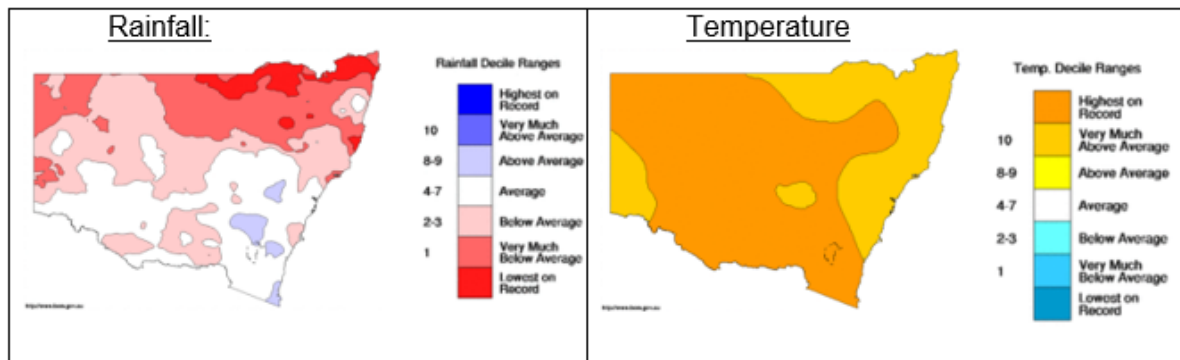
Please can Coordinators email Bushcare@shoalhaven.nsw.gov.au if your group needs anything to meet safety requirements.



The tick life cycle

The Summer that was

Summer rainfall has been generally average or below in the Shoalhaven. The data also shows that it was a hot one – ‘very much above average’ for most of the Shoalhaven. This follows a spring with rainfall about average or a little above and with temperatures that were higher than usual.



These maps from the Bureau of Meteorology show a comparison of winter's weather to the long-term record. White shows areas that the weather was about average and the other colours show that conditions were either above or below the long-term average.

Weed Talk - Madeira Vine

Madiera Vine - *Anredera cordifolia*

The Latin word 'cordifolia' refers to the heart-shaped leaves of the madeira vine.



Madeira Vine is a fast growing native to South America. It entwines itself around shrubs and trees and can reach heights of up to 30 metres.

Madeira Vine is a twining vine, with wide, fleshy, heart-shaped leaves that are 2 to 15cm long, and fragrant, cream-coloured flower spikes up to 30cm long. These spikes resemble a lamb's tail, hence the alternate common name 'lamb's tail'.

Madeira Vine spreads mainly via large numbers of specialised aerial tubers produced along the stems (bulbils). If fragments end up in waterways, they are easily transported downstream. The vine also spreads vegetatively by creeping underground stems (rhizomes) and tuberous roots.

Successful control of Madeira Vine requires all the tubers and bulbils to be removed or killed. Control activities require regular follow-up for many years. Single control activities can cause disturbance that results in vigorous regrowth and can lead to worse infestation levels unless dedicated follow-up occurs. Cut/paint and spraying are typically used, depending on the situation*.



Madeira Vine tubers

Madeira Vine - Anredera cordifolia

Physical removal of Madeira Vine is difficult because of the bulbils but may be practical at smaller or immature infestation sites or as follow-up.

Tubers, bulbils and vegetative material must be disposed of appropriately, as they will readily regrow. Cutting and pulling the vines from the canopy should be avoided as it results in a shower of viable bulbils. If this is necessary (where there is extreme stress on host plant), tarpaulins can be used to collect bulbils.

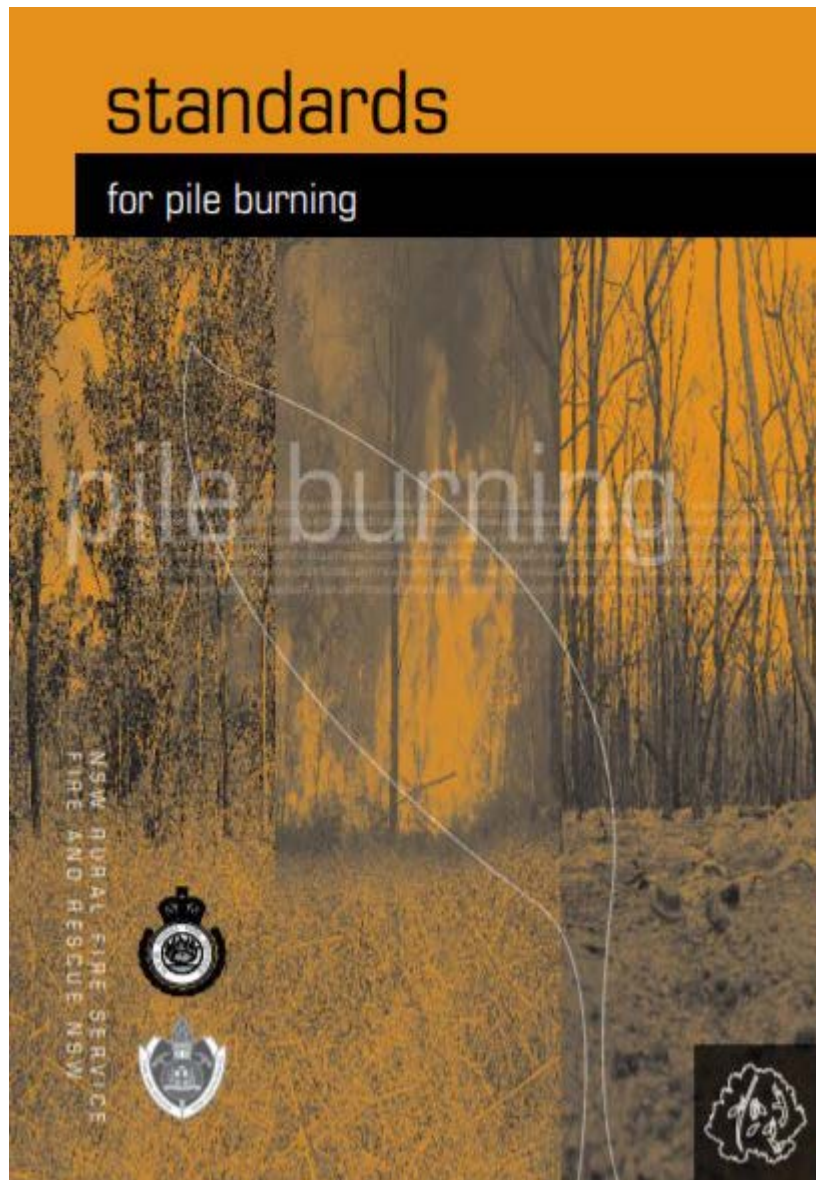
The South American beetle *Plectoncha correntina* was released in 2011/12 as a potential biological control for Madeira Vine, with Bomaderry as one of the release sites, however its impact has been limited.

*For chemical (and non-chemical options, see DPI's NSW Weed Control Handbook.



Madeira Vine can smother other vegetation

Pile Purning



Some groups do some pile burning during autumn and winter, outside of the Bush Fire Danger Period. While it is generally encouraged to mulch dead material across a site, pile burning can occasionally be a useful technique. For example, where there is a lot of dry coarse material like lantana removed, it can be piled and burnt to encourage natural regeneration or make space for revegetation.

There are a lot of rules when doing a pile burn on a Bushcare site! Please contact Pete Swanson if you are considering pile burning and also have a look at the RFS requirements: [RFS Standards for Pile Burning](#)

What's On

10 May Shane Howard headlines charity show for at-risk kids

The former frontman of iconic Australian band Goanna is coming to Coolangatta Estate at Shoalhaven Heads to help raise much-needed funds for a local farm that is dedicated to helping disadvantaged and at-risk young people.

The Shane Howard Trio will be playing at Coolangatta Estate on Friday, 10 May to support A Taste of Paradise – Tim and Andy Francis' permaculture and organic farm between Berry and Gerringong that has helped hundreds of young people from disadvantaged backgrounds.

Tickets and more information available online at www.southcoasttickets.com.au. Dinner and show packages can be booked by emailing karina@seyffers.com.au.



PROCEEDS TO A TASTE OF PARADISE FARM
www.atasteofparadise.org.au

Accommodation available.
To make a booking contact
Coolangatta@shoalhaven.net.au

5 June 2019 – World Environment Expo

The Shoalhaven Environmental Expo 2019 will be held on World Environment Day, 5th June 2019 at the Shoalhaven Entertainment Centre. The Shoalhaven Environmental Expo promises to be a day of entertainment, involvement and discovery.

Expo 2019 will showcase local initiatives, community partnerships and Council programs to embrace and encourage sustainable environmental practices.

<https://shoalhaven.nsw.gov.au/Environment/Waste-and-recycling/Environmental-Expo>

[The ReImagine Sculpture Project 2019](#) is an exciting new aspect of the Expo 2019.

Artists and sculptors will address the theme of ReIMAGINE with 80% of the materials used in the works to be sourced from materials presented for disposal, reuse or recycling at council-owned waste facilities. Shoalhaven City Council is excited to announce that a rigorous application process attracted an inspired group of local artists, 20 of whom have been invited to participate and submit works in May 2019.

The ReIMAGINE Sculpture Project 2019 Exhibition will be held from 27 May to 7 June 2019 at the Shoalhaven Entertainment Centre.

For more information, please email ReIMAGINE@shoalhaven.nsw.gov.au or phone Monica Willis, Waste Services Project Officer on 0468 936 511



Bushcare Links is a quarterly newsletter of the Shoalhaven Bushcare Program which aims to support and inspire ecological restoration by community Bushcare Groups across the Shoalhaven LGA.

If you have something you would like to share, or have any inquiries on the content of this issue, you can email the Shoalhaven Bushcare Coordinator on bushcare@shoalhaven.nsw.gov.au



© Shoalhaven City Council



[Preferences](#) | [Unsubscribe](#)