

**BAWLEY POINT KIOLOA COMMUNITY ASSOCIATION GRAFFITI
PARKCARE ACTION PLAN**

Document Number: D22/320173 • **Approved:** 10/1/2023
Approval Document Number: D22/511955 • **File:** 31954E
Produced By: City Services • **Review Date:** 10/1/2029

RESERVE INFORMATION

Group Name:	Bawley Point Kioloa Community Association Graffiti Parkcare Group
Reserve Name:	All reserves (inc road reserves) in Bawley Point and Kioloa
Location:	Bawley Point and Kioloa
Land Tenure	Freehold / Crown

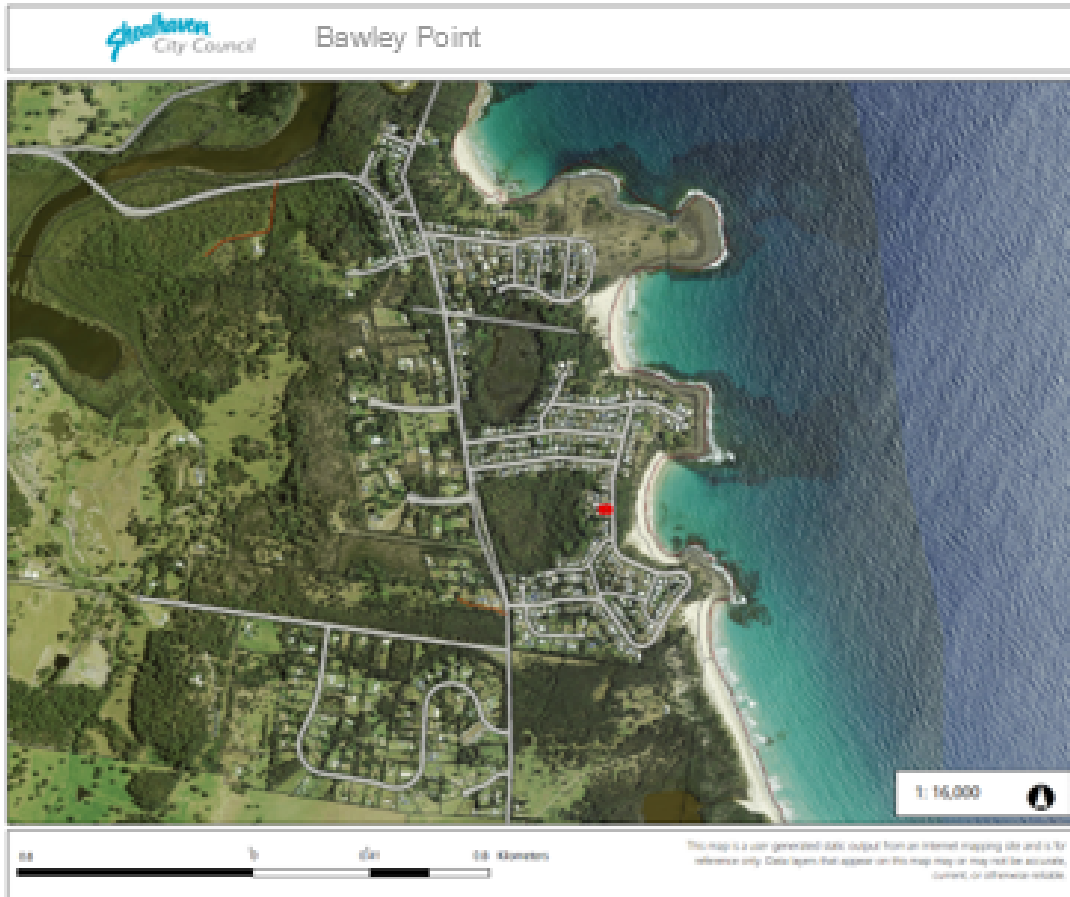
1. PARKCARE GROUP GOALS

To remove and or cover graffiti in all reserves in the Bawley Point Kioloa area.
--

2. SHOALHAVEN PARKCARE GROUP ACTIVITIES TABLE

GROUP ACTION	PRIORITY	METHOD	TIMING
Remove and / or cover graffiti in all Council owned or managed reserves including road reserves in accordance with Council policies and procedures as detailed in this plan	H	By hand, with graffiti removal products and pressure washer Painting with brushes and rollers	Ongoing

3. PARKCARE GROUP ACTION PLAN MAP



4. PARKCARE GROUP WHS DOCUMENTS

Type of Activity	WHS Document Name	Document No.
Painting over graffiti or using graffiti products to remove	Operational Risk Assessment	FM22/16
Relevant SDS for graffiti product	As per SDS on purchasing	N/A

WHS Document Name	Document No.
Workplace Inspection Checklist	D13/177520
Incident Reporting, Investigation and Corrective Action	PRD22/123
Bushcare/Parkcare Policy	POL22/29
Bushcare/Parkcare Procedure	PRD22/208
Contractor & Volunteer Management	PRD22/122
Personal Protective Equipment (PPE)	PRD21/68
Work Health & Safety Policy	POL20/12
Risk Management	PRD22/22

WHS Incident Documents	Document No.
Incident Note – No Injury	P21.F02 – Sample
Incident Report – Injury	P21.F01 – Sample
Hazard & Incident Note – No Injury	P21.F03 – Sample

5. COUNCIL SUPPORT

Supply of materials for removal of graffiti

6. HAS A SITE HAZARD AND RISK ASSESSMENT BEEN COMPLETED FOR THE PARKCARE SITE?

Risk assessments are completed daily as part of the Site Recording Group Sheet & Site Specific Risk Assessment Form.

7. LIST THE PERSONAL PROTECTION EQUIPMENT REQUIRED FOR VOLUNTEERS WHILST WORKING ON THE SITE

PPE Equipment Required	Date issued
First Aid Kit	As Required

Gloves	As Required
Sunscreen	As Required
Insect repellent	As Required
Safety glasses	As Required

8. POSSIBLE FUTURE FUNDING

Project	Funding source
Nil	

9. REVIEW

This plan will be reviewed six years from its approval but can be reviewed sooner if agreed.

The group should review a summary of the Parkcare Policy & Procedures at the time of each annual review.

10. LOCAL OR REGIONAL MANAGEMENT PLANS OR STRATEGIES THAT THIS PLAN RELATES TO

Name of document	Year it was produced	Produced by
Graffiti Management Policy (POL22/108)	2022	Shoalhaven City Council
Graffiti Act 2008	2008	New South Wales Government

All works undertaken pursuant to this action plan are to be to the satisfaction of the Open Spaces Assets Coordinator

Parkcare Group Name: Bawley Point Kioloa Community Association Graffiti Parkcare Group

Coordinator Name Margaret Hamon

Signature

Date / ...