



NAME BUSHCARE ACTION PLAN REVIEW

Document Number: D16/12505 • Adopted: 24/05/2016 • Minute Number: MIN16.388 •
File: 26279E • Produced By: Planning & Development Services Group • Review
Date: 24/05/2019

CONTACT INFORMATION

Group Name: Moeyan Hill Bushcare Group
Contact: David Kraus
Address: 53 Houston Place, Berry
Telephone:
Email: david.kraus@iinet.net.au
Reserve Name: Moeyan Hill
Reserve Number: NCO002
Land Tenure: Shoalhaven City Council **Comm. Land Type:** Natural Area – Bushland

1. BUSHCARE GROUP GOALS

The aim of the Moeyan Will Bushcare Site action is as follows:

1. Maintain and improve the reserve's biodiversity
2. Protect the conservation values of the reserve
3. Regenerate and undertake weed control that will achieve the above two aims
4. Work in line with the objectives and recommendations of the draft Moeyan Hill Vegetation Management Plan 1998
5. Foster further community stewardship and involvement in the Bushcare group, management and use of the reserve.
6. Acknowledge the Moeyan Hill Reserve landscape connectivity values, as part of the Berry Landscape Conservation Area, as per the Register of the N.S.W National Trust.
7. Inclusion of the Moeyan Hill reserve into the Berry Corridor activities.

2. BUSHCARE GROUP ACHEIVEMENTS TO DATE – (What successes has your Bushcare Group achieved in relation to your achieving the goals and actions in your current Bushcare Group Action Plan and what lessons or new skills/knowledge have you learnt from these achievements?)

Successes/Goals/Actions achieved to date	Lessons learnt
Regeneration and control of environmental and noxious weeds across 32 hectares of remnant native vegetation at Moeyan Hill Reserve	The Moeyan Hill Bushcare Group has not been able to achieve this action without entering into partnerships with other organisations and government bodies, via the sourcing of grant funds and cooperation of adjacent landholders.
Regeneration of 43,491 square metres of Illawarra Sub Tropical Rainforest, which is listed as an Endangered Ecological Community under the NSW Threatened Species Conservation Act 1995	As these vegetation types are located on richer alluvial soils and in moisture micro-climatesthe rate of secondary weed invasion has been high and Council and the Bushcare Group have needed to be vigilant with their follow up weed control.
On-going involvement of adjoining private landholders in the activities of the Moeyan Hill Bushcare Group. This has built on the capacity of these landholders to undertake bush regeneration projects on their properties by way of increasing their skills and knowledge.	The involvement of adjoining landholders directly in the Moeyan Hill Bushcare Group has increased the local community's awareness of local biodiversity values and provided landholders with a local social network to meet other landholders and improve social capital.
The success of the regeneration project at the Moeyan Hill has also inspired adjoining property owners to start bush regeneration project on their own land. Because they can see the visible change in the bushland condition within the Moeyan Hill reserve.	It has also improved new landholders knowledge and skills in pest animals and plant management and bush regeneration on their properties.
The Bushcare Group has lead 5 senior's walks, since 2009, through the Moeyan Hill reserve, which has broadened the awareness locally of the reserves environmental values.	Raised the local profile of the work the Moeyan Hill Bushcare Group.
Establishment and on-going monitoring of the bush regeneration project	The on-going monitoring project has been fairly spasmodic over the last 10 years since the project started. More effort and resources need to be allocated to train Bushcare volunteers to undertake monitoring.
Successfully awarded \$28,000 grant from Southern Rivers CMA	NA

3. SHOALHAVEN BUSHCARE GROUP ACTIVITIES TABLE (to be in conjunction with attached site map)
 NOTE: Priority should be rated as H = High (within 12 months); M = Medium (1-3 years); L = Low

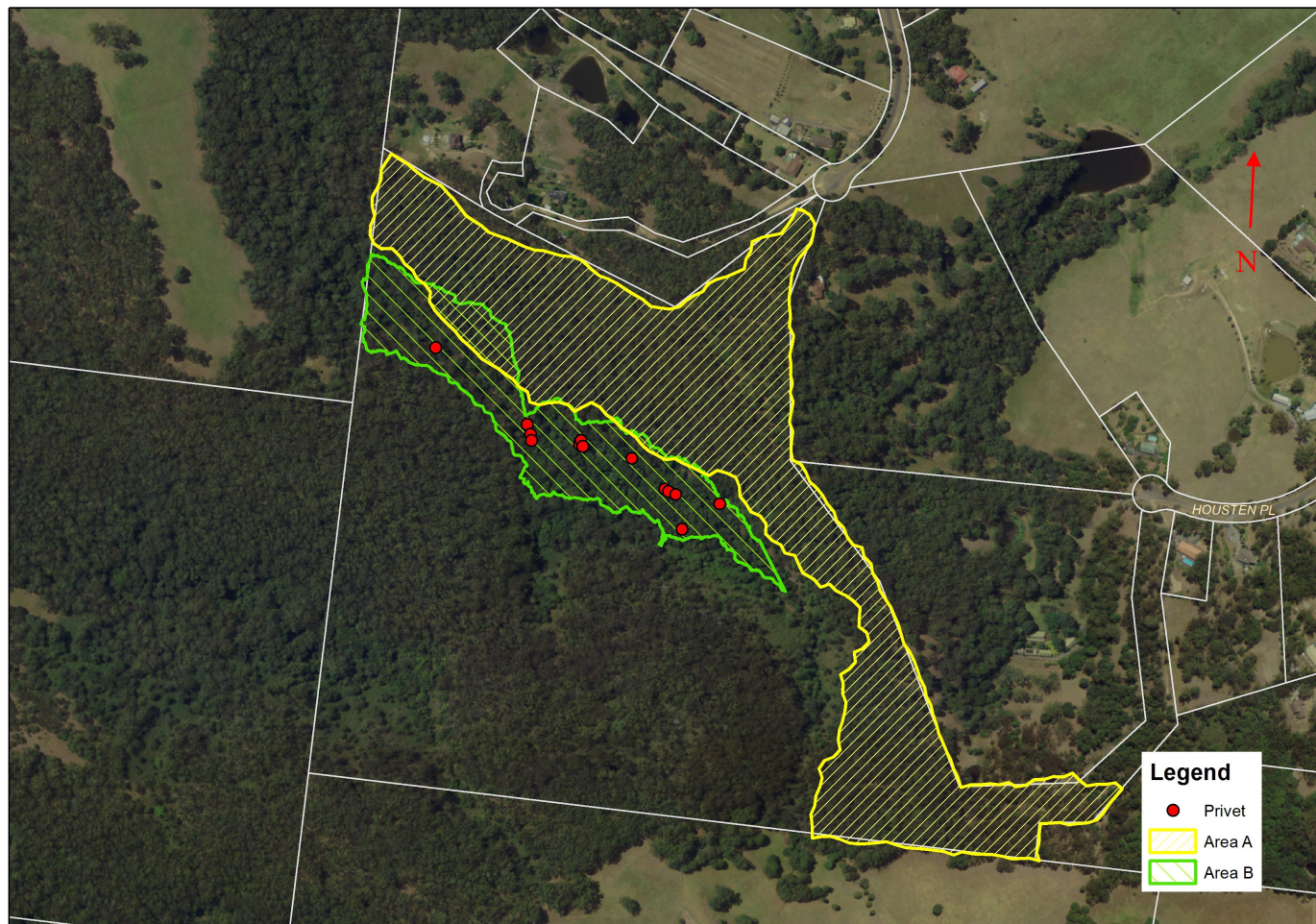
GROUP ACTION (these should relate to your project description)	PRIORITY	METHOD	TIME
Area A (See plans map for details)			
Existing and Current Actions			
1. Bushcare Group and Council to continue the on-going control of noxious and environmental pest plants across the area, focusing on the following priority weed species: <ul style="list-style-type: none"> a. <i>Lantana camara</i> (Lantana) b. <i>Delairea odorata</i> (Cape Ivy) c. <i>Solanum maritimum</i> (Wild Tree Tobacco) d. <i>Lilium formosum</i> (Formosan Lily) e. <i>Asparagus aethiopicus</i> (Asparagus Fern) f. <i>Passiflora edulis</i> (Passion fruit) g. <i>Passiflora mollissima</i> (Banana Passionfruit) h. <i>Ipomea cairica</i> (Mil-a-Minute) i. <i>Sporobolus africanus</i> (Parramatta Grass) 	1. H	1. Undertake a combination control techniques ranging from manual hand control, cut and paint/scrape and paint in areas of light density weed cover. In areas with higher density weed cover chemical control will be required such as Splatter Gun or high volume spray (such as the old quarry)	1. As required
2. Continue to undertake monitoring on the established quadrats to obtain quantitative data to measure the changes in vegetation composition and measure success of the regeneration project.	2. H	2. Council staff to assist Bushcare Group with monitoring	2. Once a year
3. Continue to undertake guided walks through the reserve with interested groups and/or individuals		3. Bushcare Group to organise through Berry Landcare and local media	3. As required
New Actions			
1. Regenerate the old quarry site in the North-Western	1. M	1. Council to undertake initial	1. 2016

GROUP ACTION (these should relate to your project description)	PRIORITY	METHOD	TIME
<p>part of area A via undertaking the following:</p> <ol style="list-style-type: none"> a. Spray the remaining <i>Lantana camara</i> using the Splatter Gun technique b. Once the primary weed control has taken effect crush down the dead Lantana canes to mulch the area c. Undertake revegetation of the quarry using locally sourced seed propagules d. Undertake follow up maintenance weed control e. Establish a 20m x 20m quadrat for undertaking monitoring to assess the success <ol style="list-style-type: none"> 2. Undertake seed collection within the reserve to provide local seed source for future revegetation project within the Berry Corridors Conservation Area. 3. Council to provide training to volunteers in vegetation monitoring so that the Bushcare Group can continue monitoring the regeneration success. 4. Explore the possibilities of installing motion sensor camera to monitor wildlife numbers and behaviours in the reserve 	<p>2. M</p> <p>3. H</p> <p>4. L</p>	<p>spraying of Lantana and Bushcare Group to break down canes and revegetate using plans suggested revegetation list</p> <p>2. Work with Berry Landcare and the Berry Public School Prop House to collect and propagate collected seed. Insure the NSW Florabank Guidelines are followed when undertaking collecting</p> <p>3. Council and Bushcare Group to organise a bush regeneration monitoring field day</p> <p>4. Work with GER “Whose Living on My Land” project and Berry Landcare to coordinate the installation and training in sensor motion cameras</p>	<p>2. 2016 to 2019</p> <p>3. 2016</p> <p>4. 2016 to 2025</p>
<p>Area B (See plans map for details)</p> <p>Existing and Current Actions</p> <ol style="list-style-type: none"> 1. Bushcare Group and Council to continue with the on- 	<p>1. H</p>	<p>Existing and Current Actions</p> <ol style="list-style-type: none"> 1. Use a combination of 	<p>1. As</p>

GROUP ACTION (these should relate to your project description)	PRIORITY	METHOD	TIME
<p>going control of noxious and environmental pest plants, focusing on the following priority weed species:</p> <ol style="list-style-type: none"> a. <i>Lantana camara</i> (Lantana) b. <i>Ligustrum lucidum</i> (Large Leaf Privet) c. <i>Senna pendula</i> spp. <i>glabrata</i> (Cassia) d. <i>Solanum maritimum</i> (Wild Tree Tabacco) e. <i>Zantedeschia aethiopica</i> (Arum Lily) f. <i>Delairea odorata</i> (Cape Ivy) <p>2. Re-establish the 20m x 20m quadrat vegetation monitoring plot and continue to undertake monitoring to provide quantitative data to measure the success of the regeneration project</p>	2. H	<p>manual chemical control such as hand pulling, cut and paint and drill and inject depending on weed distribution and density. Some areas may require spot spraying with herbicide</p> <p>2. Shoalhaven Bushcare Coordinator to assist Bushcare Group to re-establish quadrat and provide training in monitoring.</p>	<p>required</p> <p>2. 2016</p>
<p>New Actions</p> <ol style="list-style-type: none"> 1. Undertake seed collection within the reserve to provide local seed source for future revegetation project within the Berry Corridors Conservation Area. 2. Council to provide training to volunteers in vegetation monitoring so that the Bushcare Group can continue to monitoring the regeneration success. 3. Explore the possibilities of installing motion sensor camera to monitor wildlife numbers and behaviours in the reserve 	<p>1. M</p> <p>2. H</p> <p>3. L</p>	<p>New Actions</p> <ol style="list-style-type: none"> 1. Work with Berry Landcare and the Berry Public School Prop House to collect and propagate collected seed. Insure the NSW Florabank Guidelines are followed when undertaking collecting 2. Council and Bushcare Group to organise a bush regeneration monitoring field day 3. Work with GER "Whose Living on My Land" project and Berry Landcare to coordinate the installation and training in 	<p>1. 2016 – 2019</p> <p>2. As required</p> <p>3. 2016 - 2025</p>

GROUP ACTION (these should relate to your project description)	PRIORITY	METHOD	TIME
		sensor motion cameras	
<p>Partnerships with surround Landholders and others</p> <p>New Actions</p> <ol style="list-style-type: none"> 1. Work with Berry Landcare and other partners in the NSW Environmental Trust – Berry Corridors Stepping Stone Bush Connect grant funded project to undertake pest animal and plant control on Moeyan Hill reserve as part of a cooperative approach biodiversity conservation across the Berry Corridors project area. 2. Hold a field-day in cooperation with Berry Landcare to demonstrate the bush regeneration techniques used and results at Moeyan Hill reserve. 	<ol style="list-style-type: none"> 1. H 2. M 	<ol style="list-style-type: none"> 1. Ensure Council staff and Bushcare Group members are part of the project's working party. 2. Council, Bushcare Group and Berry Landcare to coordinate 	<ol style="list-style-type: none"> 1. 2016 to 2025 2. 2016 /17

4. BUSHCARE GROUP ACTION PLAN MAP



5. BUSHCARE GROUP WHS & EQUIPMENT REQUIREMENTS

Type of Activity	Yes	SWMS name included
Manual weed control (cut & paint, scrape and paint etc)	√	SWMS1276
Chemical control (spraying of herbicides)	√	SWMS1276
Planting	√	SWMS1265
Minor construction (walking track, fencing, outdoor furniture)		
Propagation & seed collection	√	SWMS1265
Education (school groups, field days etc)	√	NA
Other		

6. COUNCIL SUPPORT

Council provide the following support:

- Provision Tools, Equipment, PPE and Chemical
- Provision of Bushcare Field Officer for 11 sessions over 12 months
- Provision of mulch and plants within budget capacity
- Free green waste tipping fees of up to \$27 per month Assistance with technical advice
- Removal of larger debris – Council employ staff to help in the removal of this debris
- Assistance with the provision with technical advice and training for monitoring
- Provision of 2 x staff for 4 days to assist with pest animal and plant control

7. HAS A SITE HAZARD AND RISK ASSESSMENT BEEN COMPLETED FOR THE BUSHCARE SITE?

Yes √ No

8. LIST THE PERSONAL PROTECTION EQUIPMENT REQUIRED FOR VOLUNTEERS WHILST WORKING ON THE SITE

PPE Equipment Required	Date issued
First Aid Kit	Requires update
Gloves	Requires update

Sunscreen	Requires update
Insect repellent	Requires update

9. POSSIBLE FUTURE FUNDING

Project	Funding source
Partnership project to extend the bush regeneration project across tenure and into other areas of the Moeyan Hill Reserve	Various

10. PLAN WILL BE REVIEWED EVERY THREE YEARS

Next review due:

24/05/2019

11. PLEASE LIST OTHER LOCAL OR REGIONAL MANAGEMENT PLANS OR STRATEGIES THAT THIS PLAN RELATES TO

Name of document	Year it was produced	Produced by
Generic Plan of Management for Community Land – Natural Areas	2001	Shoalhaven City Council
Moeyan Hill Remnant Vegetation Management Plan	1998	Shoalhaven City Council
South East Local Land Services Strategic Plan	2016	South East Local Land Services

12. BUSHCARE SITE RECOMMENDED PLANTING/REVEGETATION SPECIES LIST

OVERSTOREY TREES	
Botanical	Common
<i>Acacia mearnsii</i>	Black Wattle
<i>Acmena smithii</i>	Lilli Pilli
<i>Alphitonia excelsa</i>	Red Ash
<i>Angophora floribunda</i>	Rough-barked Angophora
<i>Baloghia inophylla</i>	Brush Bloodwood
<i>Brachychiton acerifolius</i>	Illawarra Flame Tree
<i>Brachychiton populneus</i>	Kurrajong
<i>Callistemon salignus</i>	Willow Bottlebrush
<i>Cassine australis</i>	Red Fruited Olive Plumb
<i>Corymbia maculata</i>	Spotted Gum
<i>Dendrocnide excelsa</i>	Giant Stinging Tree
<i>Doryphora sassafras</i>	Sassafras
<i>Ehretia acuminata</i>	Koda
<i>Eucalyptus botryoides</i>	Bangalay Gum
<i>Eucalyptus paniculata</i>	Grey Ironbark
<i>Eucalyptus pilularis</i>	Blackbutt
<i>Eucalyptus saligna</i>	Sydney Blue Gum
<i>Eucalyptus tereticornis</i>	Forest Red Gum
<i>Ficus obliqua</i>	Small Leaf Fig
<i>Melaleuca styphelioides</i>	Prickly Paperbark
<i>Melia azedarach</i>	White Cedar
<i>Syncarpia glomulifera</i>	Turpentine
<i>Syzigium australe</i>	Magenta Lily
<i>Toona australis</i>	Red Cedar
SHRUBS	
Botanical	Common
<i>Acacia binervata</i>	Two Veined Hickory
<i>Acacia maidenii</i>	Maidens Blush
<i>Acronychia oblongifolia</i>	Native Citrus
<i>Backhousia myrtifolia</i>	Grey Myrtle
<i>Breynia oblongifolia</i>	Native Breynia
<i>Callistemon salignus</i>	Pink Tips
<i>Claoxylon australe</i>	Brittlewood
<i>Clerodendrum tomentosum</i>	Hairy Clerodendrum
<i>Diospyros australis</i>	Black Plumb
<i>Indigofera australis</i>	Indigofera
<i>Melaleuca styphelioides</i>	Prickly Paperbark
<i>Myoporum acuminatum</i>	Mangrove Boobialla
<i>Notalea longifolia</i>	Mock Olive
<i>Rapanea variabilis</i>	Muttonwood
<i>Santalum obtusifolium</i>	Sandlewood
<i>Zieria smithii</i>	Sandfly Zieria
<i>Cryptocarya glaucescens</i>	Jackwood
<i>Cryptocarya microneura</i>	Murrogum

<i>Diploglottis australis</i>	Native Tamarind
<i>Elaeocarpus kirtonii</i>	White Quondong
<i>Eupomatia laurina</i>	Native Guava
<i>Ficus coronata</i>	Sandpaper Fig
<i>Glochidion ferdinandi</i>	Cheese Tree
<i>Guioa semiglauca</i>	Guoia
<i>Livistona australis</i>	Cabbage Palm Tree
<i>Pisonia umbellifera</i>	Birdlime Tree
<i>Rhodamnia rubescens</i>	Scrub Terpentine
<i>Streblus brunonianus</i>	Whalebone Tree
<i>Synoum glandulosum</i>	Bastard Rosewood
<i>Alectryon subcerinus</i>	Wild Quince
<i>Diospyros pentamera</i>	<i>Myrtle Ebony</i>
<i>Melicope micrococca</i>	Melicope
<i>Notelaea venosa</i>	Mock Olive
<i>Homalanthus populifolius</i>	Bleeding Heart
<i>Ozothamnus diosmifolius</i>	Paper Daisy
<i>Olearia viscidula</i>	Daisy Bush
<i>Persoonia linearis</i>	Narrow Leaf Geebung
<i>Pittosporum revolutum</i>	Rough Fruited Pittosporum
<i>Pittosporum undulatum</i>	Sweet Pittosporum
UNDERSTOREY (grasses, herbs, climbers)	
Botanical	Common
<i>Dichondra repens</i>	Kidney Weed
<i>Imperata cylindrica</i>	Blady grass
<i>Leucopogon juniperinus</i>	Prickly Bearded Heath
<i>Lomandra longifolia</i>	Spiny-headed Matt-rush
<i>Microlaena stipoides</i>	Weeping Grass
<i>Oplismenus aemulus</i>	Australian Basket Grass
<i>Oplismenus imbecillis</i>	Creeping Beard Grass
<i>Pittosporum multiflorum</i>	Orange Thorn
<i>Poa labillardierei</i>	Tussock Grass
<i>Clematis glycinoides</i>	Old Man's Beard
<i>Glycine microphylla</i>	Love Creeper
<i>Kennedia rubicunda</i>	Dusky Coral Pea
<i>Marsdenia rostrata</i>	Milk Vine
<i>Pandorea pandorana</i>	Wonga Wonga Vine
<i>Aphanopetalum resinsum</i>	Gum Vine
<i>Sarcopetalum harveyanum</i>	Pearl Vine
<i>Stephania japonica</i>	Snake Vine

13. BUSHCARE SITE WEED LIST (The following weeds have been recorded on the site)

Noxious	Environmental	Control Method
<i>Lantana camara</i> (Lantana)		Chemical or manual control
<i>Sporobolus africanus</i> (Parramatta Grass)		Chemical or manual control
	<i>Araujia sericifera</i> (Moth Vine)	Manual control (hand pull)
	<i>Asparagus aethiopicus</i> (Asparagus Fern)	Chemical or manual control
	<i>Cinnamomum camphora</i> (Camphor laurel)	Chemical or manual control
	<i>Delairea odorata</i> (Cape Ivy)	Chemical or manual control
	<i>Grevillea robusta</i> (Silky Oak)	Chemical or manual control
	<i>Ipomea cairica</i> (Mil-a-Minute)	Chemical or manual control
	<i>Ligustrum lucidum</i> (Large Leaf Privet)	Chemical or manual control
	<i>Lilium formosanum</i> (Formosan Lily)	Chemical or manual control
	<i>Ligustrum sinense</i> (Small Leaf Privet)	Chemical or manual control
	<i>Passiflora edulis</i> (Passion fruit)	Chemical or manual control
	<i>Passiflora mollissima</i> (Banana Passionfruit)	Chemical or manual control
	<i>Senna pendula</i> <i>spp. glabrata</i> (Cassia)	Chemical or manual control
	<i>Solanum maritimum</i> (Wild Tree Tabacco)	Chemical or manual control
	<i>Zantedeschia aethiopica</i> (Arum Lily)	Chemical or manual control

**14. BUSHCARE SITE SPECIES LIST VEGETATION TRANSECT 1 –
RIDGE NEXT TO FIRE TRAIL (The following species have been
recorded on the site using a randomly selected 50 metre transect)**

OVERSTOREY TREES	
Botanical	Common
<i>Alphitonia excelsa</i>	Red Ash
<i>Angophora floribunda</i>	Rough-barked Angophora
<i>Eucalyptus bosistoana</i>	Coast Grey Box
<i>Eucalyptus paniculata</i>	Grey Ironbark
<i>Eucalyptus pilularis</i>	Blackbutt
<i>Eucalyptus quadrangulata</i>	White-Topped Box
<i>Eucalyptus saligna x botryoides</i>	
<i>Syncarpia glomulifera</i>	Turpentine
SHRUBS	
Botanical	Common
<i>Acacia binervata</i>	Two Veined Hickory
<i>Acacia maidenii</i>	Maidens Blush
<i>Acacia mearnsii</i>	Black Wattle
<i>Brachychiton populensis</i>	Kurrajong
<i>Acronychia oblongifolia</i>	Native Citrus
<i>Backhousia myrtifolia</i>	Grey Myrtle
<i>Breynia oblongifolia</i>	Native Breynia
<i>Callistemon salignus</i>	Pink Tips
<i>Claoxylon australe</i>	Brittlewood
<i>Clerodendrum tomentosum</i>	Hairy Clerodendrum
<i>Diospyros australis</i>	Black Plumb
<i>Exocarpus cupressiformis</i>	Ballard Cherry
<i>Indigofera australis</i>	Indigofera
<i>Persoonia longifolia</i>	Narrow Leaf Geebung
<i>Melaleuca styphelioides</i>	Prickly Paperbark
<i>Melia azedarach</i>	White Cedar
<i>Myoporum acuminatum</i>	Mangrove Boobialla
<i>Notelaea longifolia</i>	Mock Olive
<i>Notelaea venosa</i>	Mock Olive
<i>Olearia viscidula</i>	Daisy Bushes
<i>Ozothamnus diosmifolius</i>	Daisy Bush
<i>Persoonia linearis</i>	Narrow Leaf Geebung
<i>Pittosporum revolutum</i>	Rough Fruited Pittosporum
<i>Pittosporum undulatum</i>	Native Daphne
<i>Rapanea variabilis</i>	Muttonwood
<i>Santalum obtusifolium</i>	Sandlewood
<i>Trema aspera</i>	Native Peach
<i>Zieria smithii</i>	Sandfly Zieria
UNDERSTOREY (grasses, herbs, orchids)	
Botanical	Common

<i>Cynodon dactylon</i>	Common Couch
<i>Dichelachne rara</i>	Plume Grass
<i>Dichondra repens</i>	Kidney Weed
<i>Imperata cylindrica</i>	Blady grass
<i>Leucopogon juniperinus</i>	Prickly Bearded Heath
<i>Lomandra longifolia</i>	Spiny-headed Matt-rush
<i>Microlaena stipoides</i>	Weeping Grass
<i>Oplismenus aemulus</i>	Australian Basket Grass
<i>Oplismenus imbecillis</i>	Creeping Beard Grass
<i>Pittosporum multiflorum</i>	Orange Thorn
<i>Poa labillardierei</i>	Tussock Grass
UNDERSTOREY (vines & climbers)	
Botanical	Common
<i>Clematis glycinoides</i>	Old Man's Beard
<i>Desmodium varians</i>	Slender Tick-Trefoil
<i>Eustrephus latifolius</i>	Wombat Berry
<i>Geitnoplesium cymosum</i>	Scrambling Lily
<i>Glycine microphylla</i>	Love Creeper
<i>Kennedia rubicunda</i>	Dusky Coral Pea
<i>Marsdenia rostrata</i>	Milk Vine
<i>Pandorea pandorana</i>	Wonga Wonga Vine
<i>Passiflora herbertiana</i>	Native Passionfruit
<i>Tylophora barbata</i>	Forest Bind Weed

**15. BUSHCARE SITE SPECIES LIST VEGETATION TRANSECT 2 –
RAINFOREST GULLY (The following species have been recorded
on the site using a randomly selected 50 metre transect)**

OVERSTOREY TREES	
Botanical	Common
<i>Alphitonia excelsa</i>	Red Ash
<i>Callistemon salignus</i>	Pink Tips
<i>Cassine australis</i>	Red Fruited Olive Plum
<i>Dendrocnide excelsa</i>	Giant Stinging Tree
<i>Eucalyptus pilularis</i>	Blackbutt
<i>Eucalyptus saligna x botryoides</i>	
<i>Melaleuca styphelioides</i>	Prickly Paperbark
SHRUBS	
Botanical	Common
<i>Acacia mearnsii</i>	Black Wattle
<i>Acmena smithii</i>	Lilli Pilli
<i>Acronychia oblongifolia</i>	Native Citrus
<i>Brachychiton acerifolius</i>	Illawarra Flame Tree
<i>Breynia oblongifolia</i>	Native Coffee Bush
<i>Claoxylon australe</i>	Brittlewood
<i>Clerodendrum tomentosum</i>	Hairy Clerodendrum
<i>Cryptocarya glaucescens</i>	Jackwood
<i>Cryptocarya microneura</i>	Murrogum
<i>Diospyros pentamera</i>	Myrtle Ebony
<i>Diospyros australis</i>	Black Plumb
<i>Diploglottis australis</i>	Native Tamarind
<i>Elaeocarpus kirtonii</i>	White Quondong
<i>Eupomatia laurina</i>	Native Guava
<i>Ficus coronata</i>	Sandpaper Fig
<i>Ficus obliqua</i>	Small Leaf Fig
<i>Glochidion ferdinandi</i>	Cheese Tree
<i>Guioa semiglauca</i>	Guoia
<i>Livistona australis</i>	Cabbage Palm Tree
<i>Melia azedarach</i>	White Cedar
<i>Melicope micrococca</i>	Melicope
<i>Notelaea longifolia</i>	Mock Olive
<i>Polyscias murrayi</i>	Pencil Cedar
<i>Pisonia umbellifera</i>	Birdlime Tree
<i>Psychotria loniceroides</i>	Hairy Psychotria
<i>Rhodamnia rubescens</i>	Scrub Terpentine
<i>Streblus brunonianus</i>	Whalebone Tree
<i>Stenocarpus salignus</i>	Scrub Beefwood
<i>Synoum glandulosum</i>	Bastard Rosewood
<i>Toona ciliata</i>	Red Cedar
<i>Wilkiea huegeliana</i>	Veiny Wilkiea

UNDERSTOREY (grasses, herbs, orchids)	
Botanical	Common
<i>Adiantum aethiopicum</i>	Maiden Hair Fern
<i>Adiantum formosum</i>	Giant Maiden Hair
<i>Blechnum cartilagineum</i>	Gristle Fern
<i>Blechnum nutens</i>	Gristle Fern
<i>Doodia aspera</i>	Rasp Fern
<i>Gymnostachys anceps</i>	Settlers Flax
<i>Hypolepis muelleri</i>	Harsh Ground Fern
<i>Oplismenus aemulus</i>	Australian Basket Grass
<i>Pittosporum multiflorum</i>	Orange Thorn
<i>Plectranthus parviflorus</i>	Cockspur Flower
<i>Polia crispata</i>	Polia
UNDERSTOREY (vines & climbers)	
Botanical	Common
<i>Aphanopetalum resinosum</i>	Gum Vine
<i>Marsdenia rostrata</i>	Milk Vine
<i>Parsonsia straminea</i>	Monkey Rope Vine
<i>Sarcopetalum harveyanum</i>	Pearl Vine
<i>Stephania japonica</i>	Snake Vine
<i>Tylophora barbata</i>	Forest Bindweed

Appendix 1 – Map showing locations of 50 metres vegetation transects

