



LOWER MULGEN CREEK BUSHCARE ACTION PLAN

Document Number: D13/200334 • **Adopted:** 24 September 2013 • **Minute Number:** MIN13.990 • **File:** 26279E • **Produced By:** Planning & Development Services Group • **Review Date:** 24 September 2016

Group Name:	Lower Mulgen Creek Bushcare Group	
Reserve Name:	Mulgen Creek	
Reserve Number:	NBO113	
Land Tenure:	SCC	Comm. Land Type: Natural Area - Bushland

1. BUSHCARE GROUP GOALS

The goal of the Lower Mulgen Creek Bushcare Group is to restore the degraded vegetation along the lower section of Mulgen Creek (downstream of Lyndhurst Ave) to improve the biodiversity of the remnant native vegetation. The group also would like to restore a sense of pride in the local neighbourhood through the work of this project.

2. SHOALHAVEN BUSHCARE GROUP ACTIVITIES TABLE (to be in conjunction with attached site map)

NOTE: Priority should be rated as H = High (within 12 months); M = Medium (1-3 years); L = Low

GROUP ACTION (these should relate to your project description)	PRIORITY	METHOD	TIME
Seek funding through Council and other agencies for assistance in undertaking Bushcare activities	H	Identify needs and apply for grants with Council advice and assistance	On – Going
Motivation, awareness of reserve values and work risks, and development of skills for volunteers and neighbours	H	Onsite training in ecology, botany, recording fauna, bush regeneration techniques, digital art & graphic design, construction techniques and risk assessment	2013 and On-going
Design and print a flyer promoting reserve values and Bushcare activities and inviting group membership	H	Work with Council on developing leaflet and distribute to neighbours and community generally	2013
Undertake Lantana control along Northern boundary in red zone, between Yeovil Drive and creek vegetation and undertake buffer planting with pioneer and longer lived species	H	<ul style="list-style-type: none"> • Council and CSO teams to spray and manually control Lantana leaving dead canes on the ground • Bushcare Group to plant buffer areas 	2013 - 14
Mulch out the road reserve and plant out the southern side of road verge with street trees		<ul style="list-style-type: none"> • Council to spray road verge and mulch • Bushcare Group to plant street trees • Bushcare group and Council to maintain 	2013-14 On- going
Commence bush regeneration action in green and blue coded area in Southern, Eastern and Western sections of the reserve according to identified priority sites (see map)	H	<ul style="list-style-type: none"> • Weed control activities to target priority weed species according to impact on biodiversity and according their ability to spread as follows: <ul style="list-style-type: none"> ○ Lantana ○ Small and Large Leaf Privet ○ Moth Vine ○ Japanese Honeysuckle ○ Morning Glory 	2014 - 16

GROUP ACTION (these should relate to your project description)	PRIORITY	METHOD	TIME
		○ Passionfruit	
Undertake follow up maintenance weed control in blue and green coded areas and maintain the buffer plantings on the North – Western boundary of the reserve	H	Watering, mulching, hand weeding and replanting as a long-term undertaking	On-going
Move into the remaining orange coded areas, areas of poor condition, when the weed control and regeneration works in the green and blue zones are stable and only requiring minimal maintenance - Access if any revegetation is required	M	Access progress before moving in next stage	2017 On-going
Move into remaining the red coded areas, very poor condition when all other areas in the reserve have stabilised and only minimal maintenance is required. Need to access revegetation/re-fabrication works as required in these very poor condition bushland areas	L	Access progress before moving into the next stage	2020 On-going
Upgrade walking track system	L	Improve track surface and creek crossing. Mow and maintain section of track through weedy area on Yeovil Drive side	As required
Remove rubbish	H	Hand removal. Council to transport rubbish to tip	On-going

3. LOWER MULGEN CREEK BUSHCARE GROUP ACTION PLAN MAP – Condition of Bushland Mapping - (see Tables 1 and 2 for colour code interpretation)

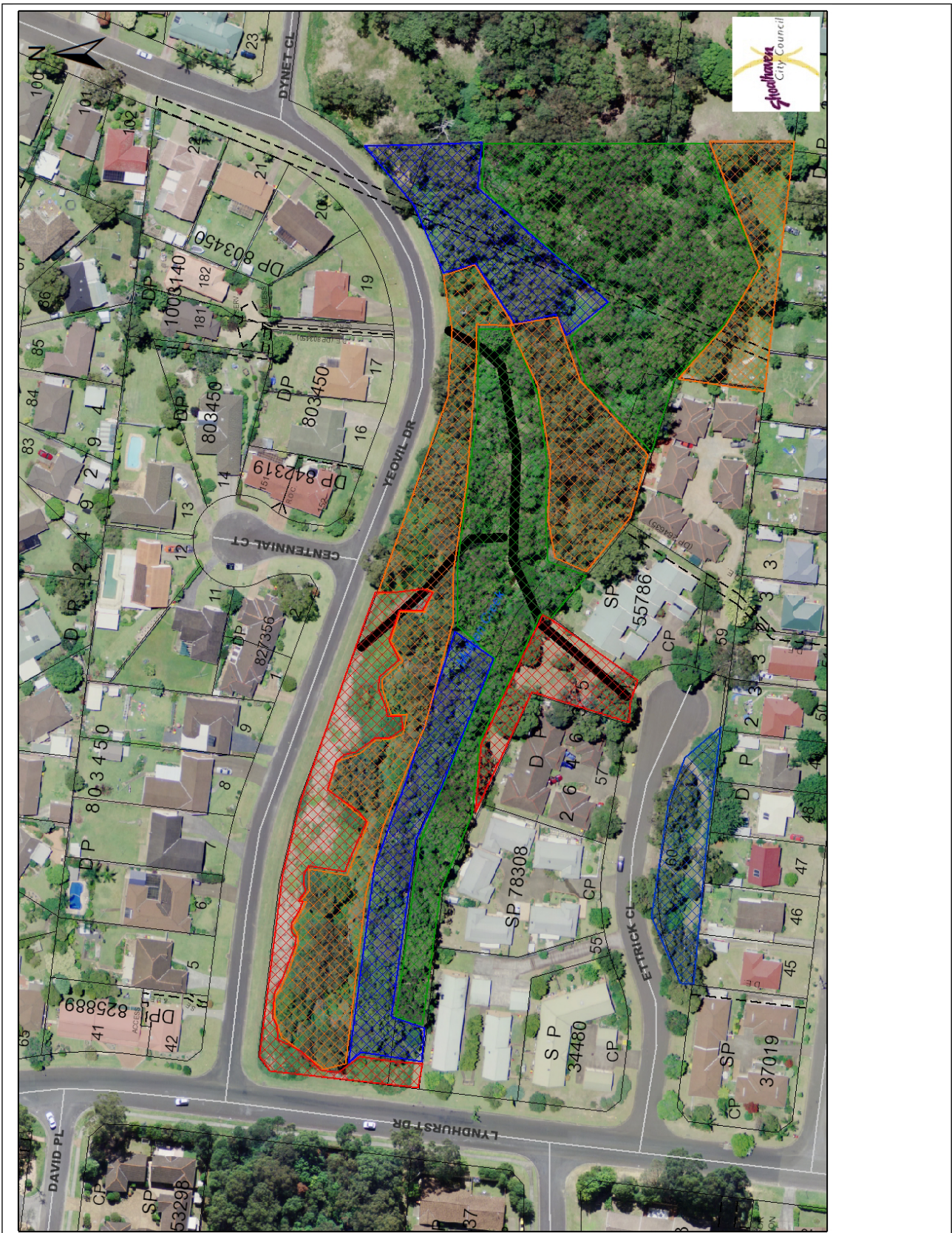


TABLE 1: Condition of Bushland Colour Code

COLOUR CODE	CONDITION OF BUSHLAND	DESCRIPTION	INTERVENTION REQUIRED
GREEN	GOOD	Virtually weed free – healthy native community (0-10% weed)	1. Minimal
BLUE	FAIR	Minor infestation of weeds (10-30%weed)	2. Low
ORANGE	POOR	Severely infested – regeneration of native species being suppressed (30-70% weed)	3. Medium
RED	VERY POOR	Bushland replaced by exotic species OR only mature specimens of highest stratum remain – no seedlings or saplings due to infestation by exotics (70-100% weed)	4. Medium or High

TABLE 2: Degree of Intervention Required

LEVEL OF INTERVENTION	DESCRIPTION
Minimal (Green) Level 1	Resilience high. Removal of scattered weed & prevention of future impacts may be required
Low (Blue) Level 2	Resilience high to medium. Removal of scattered weed and active management of impacts required
Medium (Orange) Level 3	Resilience impaired but existent. Removal of weeds and removal of impacts required
High (Red) Level 4	Resilience low or seriously limited – may need reconstruction, fabrication or reinstatement to approximate the original ecosystem

4. BUSHCARE GROUP WHS & EQUIPMENT REQUIREMENTS

Type of Activity	Yes	SWMS name included
Manual weed control (cut & paint, scrape and paint etc)	√	SWMS1127
Chemical control (spraying of herbicides)	√	SWMS1127
Planting	√	SWMS997
Minor construction (walking track, fencing, outdoor furniture)		
Propagation & seed collection	√	SWMS997
Education (school groups, field days etc)	√	
Other		

5. COUNCIL SUPPORT

Provide plants, mulch, tools, chemicals, spraying equipment, water trailer and other equipment and materials as required and agreed to;

- Supply chemical bottles and pouches for secateurs;
- Assist with design and printing of leaflet;
- Assist with training activities;
- Assist with seeking grants;
- Provide initial risk assessment awareness session

6. HAS A SITE HAZARD AND RISK ASSESSMENT BEEN COMPLETED FOR THE BUSHCARE SITE?

Yes √ No

7. LIST THE PERSONAL PROTECTION EQUIPMENT REQUIRED FOR VOLUNTEERS WHILST WORKING ON THE SITE

PPE Equipment Required	Date issued
First Aid Kit	August 2013
Gloves	August 2013
Sunscreen	August 2013
Insect repellent	August 2013

8. POSSIBLE FUTURE FUNDING

Project	Funding source
Assistance with primary weed control from bush regeneration contractors	State or Federal Grants

9. PLAN WILL BE REVIEWED EVERY THREE YEARS

Next review due:

...../...../.....

10. PLEASE LIST OTHER LOCAL OR REGIONAL MANAGEMENT PLANS OR STRATEGIES THAT THIS PLAN RELATES TO

Name of document	Year it was produced	Produced by
Generic Community Plan of Management – Natural Areas	2001	Shoalhaven City Council
Mulgen Creek Bushcare Group Action Plan	2008	Mulgen Creek Bushcare Group

11. RECOMMENDED PLANTING/REVEGETATION SPECIES LIST

OVERSTOREY TREES	
Botanical	Common
<i>Eucalyptus globoidea</i>	White Stringybark
<i>Eucalyptus piperita</i>	Sydney Peppermint
<i>Eucalyptus sclerophylla</i>	Hard-leaved Scribbly Gum
<i>Eucalyptus imitans</i>	Yalwal Stringybark
<i>Eucalyptus obliqua?</i>	Messmate
<i>Corymbia gummifera</i>	Red Bloodwood
<i>Glochidion ferdinandi</i>	Cheese Tree
<i>Acacia elata</i>	Cedar Wattle
<i>Acacia binervata</i>	Two-veined Wattle
<i>Acacia mearnsii</i>	Black Wattle
<i>Melia azedarach</i>	White Cedar
<i>Allocasuarina littoralis</i>	Black She-oak
<i>Pittosporum undulatum</i>	Sweet Pittosporum
<i>Brachychiton acerifolius</i>	Illawarra Flame
<i>Ficus rubiginosa</i>	Port Jackson Fig
SHRUBS	
Botanical	Common
<i>Leptospermum polygalifolium</i>	Yellow Teatree
<i>Ceratopetalum gummifera</i>	Christmas Tree
<i>Pittosporum revolutum</i>	Rough-fruited Pittosporum
<i>Melaleuca linearifolia</i>	Snow in Summer
<i>Breynia oblongifolia</i>	Coffee Bush
<i>Cyathea cooperi</i>	Rough Tree Fern
<i>Daviesia acicularis</i>	Bitter Pea
<i>Dodonaea triquetra</i>	Common Hop Bush
<i>Platylobium formosum</i>	Handsome Flat Pea
<i>Goodenia ovata</i>	Sticky-leaved Goodenia
<i>Pimelia linifolia</i>	Slender Rice Flower
<i>Asplenium australasicum</i>	Birds Nest Fern
<i>Acacia suaveolens</i>	Sweet-scented Wattle
<i>Acacia terminalis</i>	Sunshine Wattle
<i>Lambertia Formosa</i>	Mountain Devil
<i>Persoonia levis</i>	Broad-leaved Geebung
<i>Lomatia silaifolia</i>	Crinkle Bush
<i>Hakea salicifolia</i>	Willow-leaved Hakea
<i>Hibbertia dentata</i>	Twining Guinea Flower
<i>Omalanthus populifolius</i>	Native Poplar
UNDERSTOREY (grasses, herbs, climbers)	
Botanical	Common
<i>Themeda australis</i>	Kangaroo Grass
<i>Lomandra longifolia</i>	Spiny-headed Mat Rush
<i>Lomandra confertifolia</i>	Mat Rush
<i>Dianella caerulea</i>	Blue Flax Lily
<i>Smilax glycyphylla</i>	Native sarsaparilla
<i>Pandorea pandorana</i>	Wonga-Wonga Vine
<i>Ghania siebriana</i>	Sword Sedge

12. SITE WEED LIST

Noxious	Environmental	Control Method
Crofton Weed	Broadleaf Dock	
Lantana	Camphor Laurel	
Mist Flower	Coriopsis	
Large-leaved Privet	Couch	
Small-leaved Privet	Fishbone Fern	
	Indian Hawthorn	
	Japanese Honeysuckle	
	Morning Glory	
	Moth Vine	
	Ochna	
	Paddys Lucerne	
	Passionfruit	
	<i>Senna pendula</i> var. <i>glabrata</i> - Cassia	
	Morning Glory	
	Moth Vine	
	Star Jasmine	
	Stinking Roger	
	Tree of Heaven	
	White Veldt Daisy	
	Star Jasmine	

13. BUSHCARE SITE SPECIES LIST

OVERSTOREY TREES	
Botanical	Common
<i>Eucalyptus globoidea</i>	White Stringybark
<i>Eucalyptus piperita</i>	Sydney Peppermint
<i>Eucalyptus sclerophylla</i>	Hard-leaved Scribbly Gum
<i>Corymbia gummifera</i>	Red Bloodwood
<i>Glochidion ferdinandi</i>	Cheese Tree
<i>Acacia elata</i>	Cedar Wattle
<i>Acacia binervata</i>	Two-veined Wattle
<i>Acacia mearnsii</i>	Black Wattle
<i>Melia azedarach</i>	White Cedar
<i>Allocasuarina littoralis</i>	Black She-oak
<i>Pittosporum undulatum</i>	Sweet Pittosporum
<i>Brachychiton acerifolius</i>	Illawarra Flame
SHRUBS	
Botanical	Common
<i>Leptospermum polygalifolium</i>	Yellow Teatree
<i>Ceratopetalum gummifera</i>	Christmas Tree
<i>Pittosporum revolutum</i>	Rough-fruited Pittosporum
<i>Melaleuca lineariifolia</i>	Snow in Summer
<i>Breynia oblongifolia</i>	Coffee Bush
<i>Cyathea cooperi</i>	Rough Tree Fern

<i>Daviesia acicularis</i>	Bitter Pea
<i>Dodonaea triquetra</i>	Common Hop Bush
<i>Platylobium formosum</i>	Hansome Flat Pea
<i>Goodenia ovata</i>	Sticky-leaved Goodenia
<i>Macrozamia communis</i>	Burrawang
<i>Pimelia linifolia</i>	Slender Rice Flower
<i>Asplenium australasicum</i>	Birds Nest Fern
<i>Acacia suaveolens</i>	Sweet-scented Wattle
<i>Acacia terminalis</i>	Sunshine Wattle
<i>Lambertia Formosa</i>	Mountain Devil
<i>Persoonia levis</i>	Broad-leaved Geebung
<i>Lomatia silaifolia</i>	Crinkle Bush
<i>Xanthorrhoea resinifera</i>	Grass Tree
<i>Hakea salicifolia</i>	Willow-leaved Hakea
UNDERSTOREY (grasses, herbs, orchids)	
Botanical	Common
<i>Themeda australis</i>	Kangaroo Grass
<i>Imperata cylindrica</i> var. <i>major</i>	Bladey Grass
<i>Lomandra longifolia</i>	Spiny-headed Mat Rush
<i>Lomandra confertifolia</i>	Mat Rush
<i>Dianella caerulea</i>	Blue Flax Lily
UNDERSTOREY (vines & climbers)	
Botanical	Common
<i>Glycine clandestina</i>	Love Vine
<i>Cassytha glabella</i>	Slender Devils Twine
<i>Smilax glycyphylla</i>	Native sarsaparilla
<i>Wahlenbergia gracilis</i>	Native Bluebell
<i>Desmodium variens</i>	

Bushcare Group Name: Lower Mulgen Creek Bushcare Group

Coordinator Name ALLAN SHOANE

Signature Shoane

Date 28.1.13

