



**Shoalhaven**  
City Council

## MT COOLANGATTA BUSHCARE ACTION PLAN

<b>Group Name:</b>	Mt Coolangatta Bushcare Group
<b>Reserve Name:</b>	Mt Coolangatta (western side)
<b>Reserve No:</b>	NCO168
<b>Land Tenure:</b>	SCC
<b>Comm. Land Type:</b>	Natural Area - Bushland
<b>Land Zone: ZONING:</b>	7(f1) ENVIRONMENT PROTECTION (COASTAL)

### 1. BUSHCARE GROUP GOALS

<p>The goals of the Mt Coolangatta Bushcare Group are as follows:</p> <ol style="list-style-type: none"><li>1. To regenerate the native vegetation on the Mt Coolangatta Reserve</li><li>2. To strategically remove weeds and encourage regeneration of the native flora.</li><li>3. Map and assist Council to maintain the walking tracks system.</li></ol>
--

**2. SHOALHAVEN BUSHCARE GROUP ACTION PLAN (to be in conjunction with attached site map)**

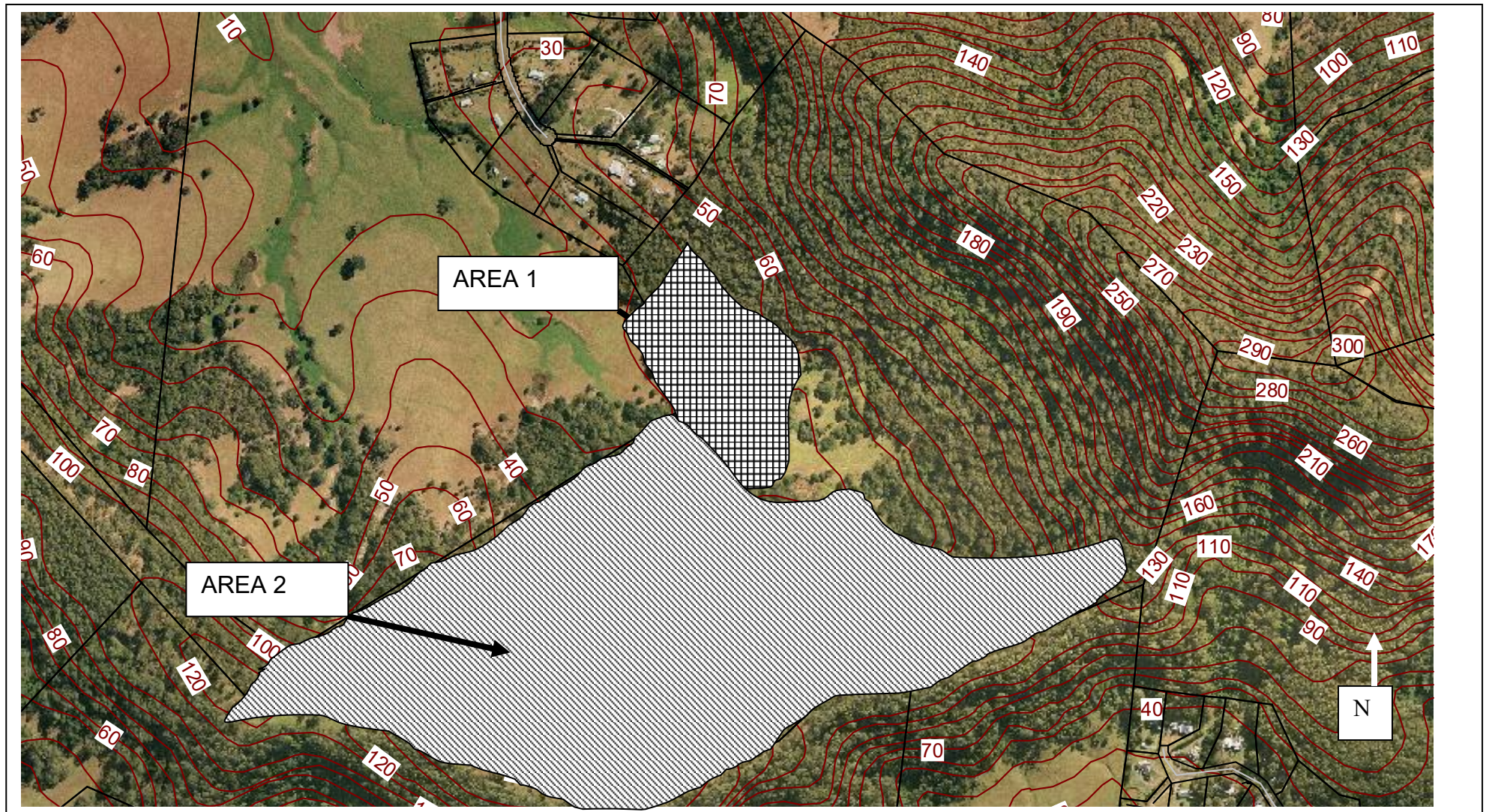
**NOTE: Priority should be rated as H = High (within 12 months); M = Medium (1-3 years); L = Low**

GROUP ACTION	PRIORITY	METHOD	TIME
<p><b>AREA 1 – DIRECTLY BEHIND 81 &amp; 82 ROXBOURGH RD</b></p> <p>This area will be broken up into five separate management areas. The action for each are as follows:</p> <ol style="list-style-type: none"> <li>1. Area 1a – Back of property to Wallaby Track (Turpentine – Ironbark - Blackbutt Forest)               <ol style="list-style-type: none"> <li>a. Manually cut and paint all Lantana in site.</li> <li>b. Leave dead canes to mulch on the ground.</li> </ol> </li> <li>2. Area 1b – Wallaby Track to 1<sup>st</sup> Gully (Turpentine – Ironbark - Blackbutt Forest)               <ol style="list-style-type: none"> <li>a. Manually cut and paint all Lantana in site.</li> <li>b. Leave dead canes to mulch on the ground.</li> </ol> </li> <li>3. Area 1c - 1st Gully to 2<sup>nd</sup> Gully (Turpentine – Ironbark - Blackbutt Forest)               <ol style="list-style-type: none"> <li>a. Manually cut and paint all Lantana where there is low to medium densities.</li> <li>b. Leave dead canes to mulch on the ground.</li> <li>c. Splatter gun areas that have high density of Lantana that are over 1.5 metres high.</li> <li>d. In summer splatter gun areas that have high density of Lantana that are over 1.5 metres high.</li> </ol> </li> </ol>	<p><b>H</b></p>	<ol style="list-style-type: none"> <li>1. Peg out section and Council to assist with species lists</li> <li>2. Cut and paint using 50:50 Glyphosate and water</li> <li>3. Follow “Using Herbicides on Lantana, guide to best management practices” manual</li> </ol>	<ol style="list-style-type: none"> <li>1. Autumn 2010</li> <li>2. On going</li> <li>3. Summer</li> <li>4. On going</li> <li>5. On going</li> </ol>

GROUP ACTION	PRIORITY	METHOD	TIME
<p><b>AREA 1 CONT.</b></p> <p>4. Area 1d – 2<sup>nd</sup> Gully to main trail (Spotted Gum – Iron Bark – Blackbutt Forest)</p> <ol style="list-style-type: none"> <li>a. Manually cut and paint all Lantana where there is low to medium densities.</li> <li>b. Leave dead canes to mulch on the ground.</li> <li>c. In summer splatter gun areas that have high density of Lantana that are over 1.5 metres high.</li> </ol> <p>5. Area 1e – Main trail to open grassed area</p> <ol style="list-style-type: none"> <li>a. In winter months manually cut transect through the area approx. 20 metres apart.</li> </ol>		<ol style="list-style-type: none"> <li>4. Follow Support workers advice</li> <li>5. Follow up weed control.</li> </ol>	<ol style="list-style-type: none"> <li>1. 2010 - 2011</li> </ol>
<p><b>AREA 2 – WALKING TRACKS AND SCC FUNDING SITE</b></p> <ol style="list-style-type: none"> <li>1. Map and GPS all walking trails on reserve</li> <li>2. Work with Council to prioritise walking trails to keep open and to close.</li> <li>3. Maintain walking tracks by slashing grass and splatter gunning track edges to keep Lantana back.</li> <li>4. Assist with the monitoring of the SRCMA Bush Incentives Project.</li> </ol>	<b>M</b>	<ol style="list-style-type: none"> <li>1. Council to assist with GPS mapping and</li> <li>2. Feed into Council’s “Walking Track Strategy”</li> <li>3. Follow “Using Herbicides on Lantana, guide to best management practices” manual</li> <li>4. Council to assist those interested in monitoring</li> </ol>	<ol style="list-style-type: none"> <li>1. Winter 2010</li> <li>2. On going</li> <li>3. Summer</li> <li>4. Over next 4 years</li> </ol>

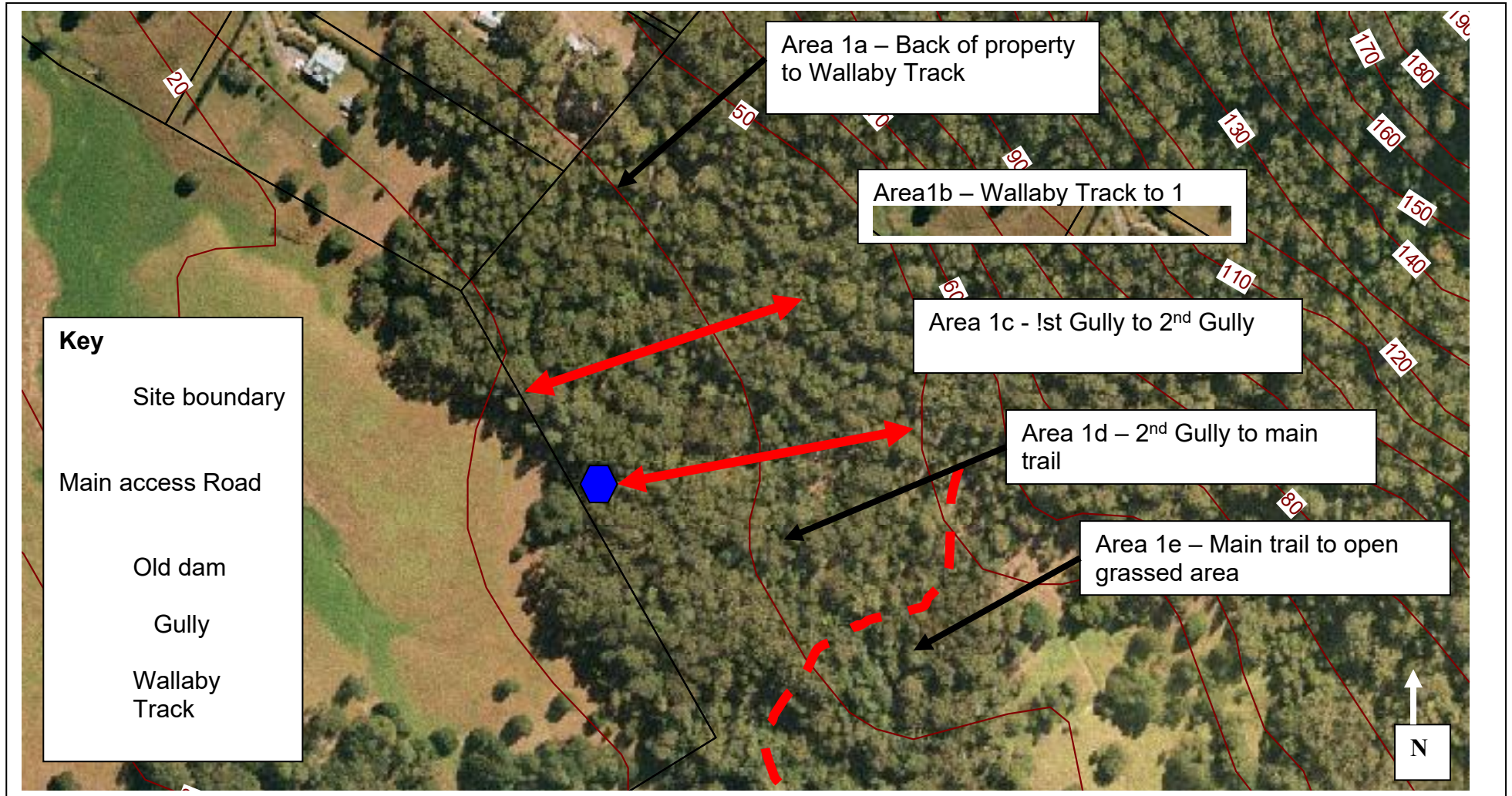
GROUP ACTION	PRIORITY	METHOD	TIME
<p><b>AREA 2 – ECOLOGICAL BURN</b></p> <ol style="list-style-type: none"> <li>1. Bushcare Coordinator to consult with Councils Fire Mitigation officer to submit proposal to the Shoalhaven Bushfire Committee for an ecological burn of a 5.7 hectare section of site 2 for an ecological burn following large scale weed control.</li> <li>2. Council to prepare Review of Environmental Factors for proposed burn.</li> <li>3. Liaise with Rural Fire Service and the local brigade captain to prepare burn plan and logistics.</li> </ol>	<b>H</b>	As per actions	<ol style="list-style-type: none"> <li>1. Autumn 2010</li> <li>2. 2010</li> <li>3. 2010</li> <li>4. 2010/11</li> </ol>
<p><b>ABORIGINAL CULTURAL ISSUES</b></p> <ol style="list-style-type: none"> <li>1. Undertake Aboriginal Cultural Sites Awareness training offered by the Department of Environment and Climate Change.</li> <li>2. Encourage aboriginal participation in the Bushcare Group</li> </ol>	<b>H</b>	<ol style="list-style-type: none"> <li>1. Council to organise training and inform group of dates</li> <li>2. Approach Aboriginal organisations with invitation to join group</li> </ol>	<ol style="list-style-type: none"> <li>1. Winter 2010</li> <li>2. On going</li> </ol>

### 3. BUSHCARE GROUP ACTION PLAN MAP



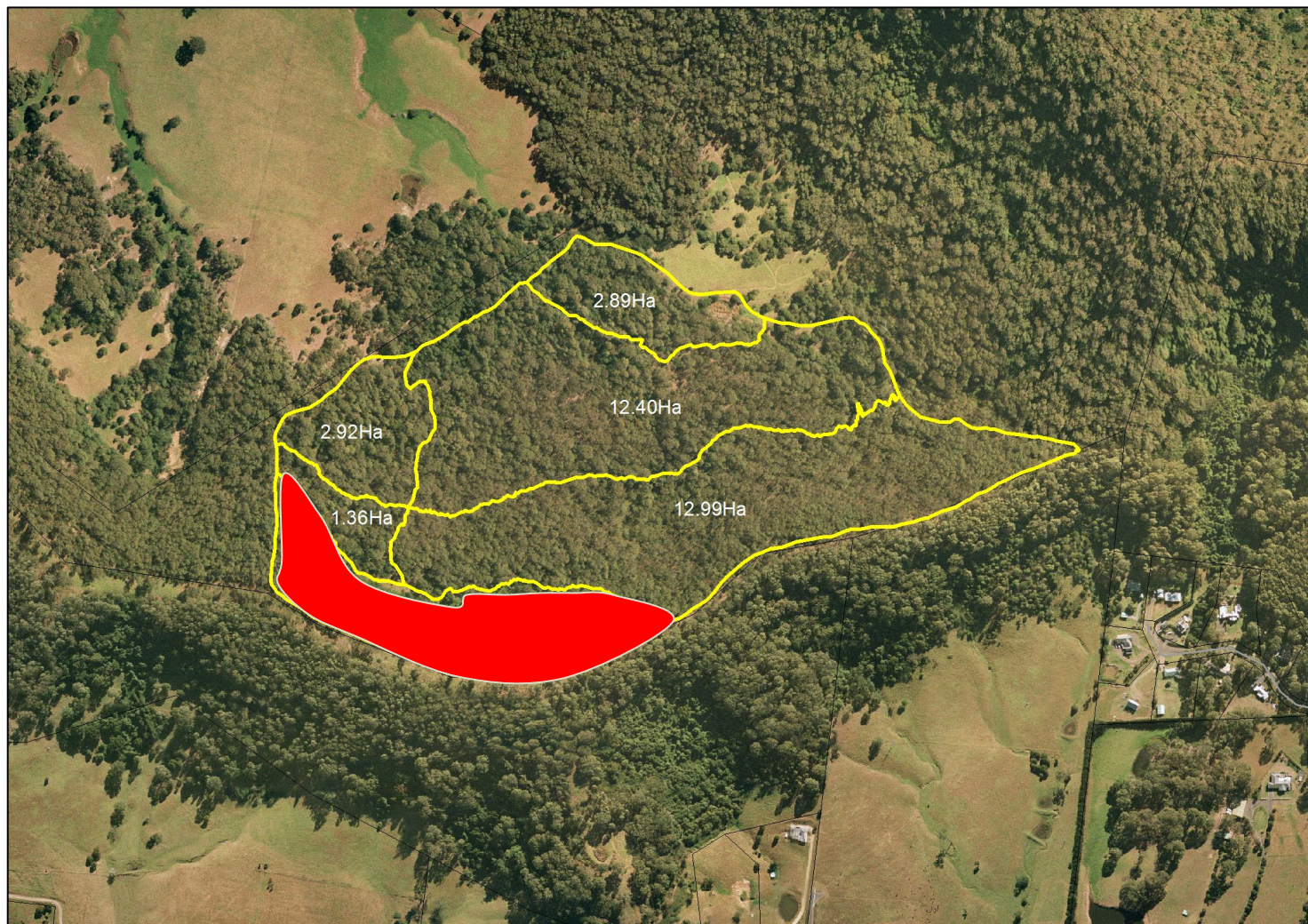



# BUSHCARE GROUP ACTION PLAN MAP – AREA 1 DETAILS





# MAP SHOWING PROPOSED ECOLOGICAL BURN AREA



 Proposed  
burn area  
5.7 Ha

#### 4. BUSHCARE GROUP OH&S & EQUIPMENT REQUIREMENTS

Type of Activity	Council to do	Bushcare group to do
Supply of all tools and PPE equipment	√	
Supply of chemical	√	
Loan of Splatter Gun	√	
Site Risk Assessment	√	√
Loan of reserve access key	√	
Manual weed control		√
Chemical weed control	√	√
Provision of maps	√	
Assistance with monitoring of SRCMA site		√
Provision of Aboriginal Cultural Site Awareness Training	√	
Undertake Aboriginal Cultural Site Awareness Training		√

#### 5. COUNCIL SUPPORT

- a. Provision of tools, herbicide and PPE equipment
- b. Provision of plants guards, stakes etc to the value of \$400/year
- c. Assistance with larger areas of Lantana control
- d. Provision of on site Bushcare Support Worker for 6 working bees over 12 months
- e. Assistance with pile burns as needed

#### 6. HAS A SITE HAZARD AND RISK ASSESSMENT BEEN COMPLETED FOR THE BUSHCARE SITE?

Yes     √

Attach a copy of the site/s risk assessment to the plan.

#### 7. LIST THE PERSONAL PROTECTION EQUIPMENT REQUIRED FOR VOLUNTEERS WHILST WORKING ON THE SITE

PPE Equipment Required
First Aid Kit
Gloves
Sunscreen
Insect repellent



## 8. FUTURE FUNDING

<b>Project</b>	<b>Funding source</b>
On going funding will be sort by both the Bushcare Group and Council as land owners to undertake further weed control and regeneration works on Mt Coolangatta	Southern Rivers Catchment Management Authority, NSW Environmental Trust

## 9. PLAN REVEIW– next review due: APRIL 2013

The group should review a summary of the Bushcare Policy & Procedures at the time of each annual review

## 10. PLEASE LIST OTHER LOCAL OR REGIONAL MANAGEMENT PLANS OR STRATEGIES THAT THIS PLAN RELATES TO

<b>Name of document</b>	<b>Year it was produced</b>	<b>Produced by</b>
Generic Community Land Plan of Management - Natural Areas	2001	Shoalhaven City Council
Southern Rivers Catchment Management Authority – Catchment Action Plan	2006	Southern Rivers Catchment Management Authority

## 11. SUGGESTED SPECIES LIST FOR FUTURE SITE REVEGETATION

## 12. SITE WEED LIST

<b>Noxious</b>	<b>Other</b>	<b>Control Method</b>
Lantana camara		Cut and paint with 50% Glyphospate
	Bidens pilosa	Hand Pull or spot spray

**ATTACHMENT: Group support and skill development needs.** This information helps to identify gaps that may exist between what the group require to function effectively and what the group has available. **This focuses on the group, overall, not individual members.**

<i>Tick one box only</i>	<b>We are absolute beginners – don't know a great deal</b>	<b>We know a bit – enough to get by most of the time</b>	<b>We know quite a lot – and we know when to seek help</b>	<b>There's probably not much more we can learn on this</b>	<b>Comments</b>
<b>OH&amp;S – develop and follow risk assessment</b>					
<b>Develop and/ or monitor Action Plan</b>					
<b>Plant identification – local native plants</b>					
<b>Weed identification &amp; control methods</b>					
<b>Bush regeneration methods</b>					
<b>Seed collection &amp; propagation</b>					
<b>Group planning and decision making</b>					
<b>Managing neighbour relations</b>					
<b>Community education – schools, neighbours etc</b>					
<b>Volunteer/ group member recruitment</b>					
<b>Preparing grant applications</b>					

List below the 10 most common plants that are indigenous to the area.	List below the 10 most common plants that are <i>not</i> indigenous to the area.
Can all of the group regular volunteers identify these? <b>YES NO</b> circle one	Can all of the group regular volunteers identify these? <b>YES NO</b> circle one

**Bushcare Group Name** ..... **Coordinator Name** ..... **Signature** ..... **Date**