



Shoalhaven
City Council

LAKE TABOURIE BUSHCARE ACTION PLAN – REVIEW (2015)

Document Number: D15/169736 - **Adopted:** 08/09/2015 **Minute:** D15/266338
File: 26281E - **Produced By:** Planning & Development Services - **Review Date:**
8 September 2018

Group Name:	Lake Tabourie Bushcare Group
Reserve Name:	River Road Reserve
Reserve Number:	SLT862 and SLT917 / SLT861 Dermal Road Reserve, 862, 864 River Road Reserve, 866, 867 Prices Highway Reserve, 868, 917
Land Tenure:	Crown Trust Managed and Council
Comm. Land Type:	Natural Area and Park

1. BUSHCARE GROUP GOALS

<p>The aim of the Lake Tabourie Bushcare Group is to enhance the environmental quality and improve the biodiversity of Lake Tabourie through the maintenance and rehabilitation of natural areas on and surrounding the lake.</p>

2. BUSHCARE GROUP ACHEIVEMENTS TO DATE – (What successes has your Bushcare Group achieved in relation to your achieving the goals and actions in your current Bushcare Group Action Plan and what lessons or new skills/knowledge have you learnt from these achievements?)

Successes/Goals/Actions achieved to date	Lessons learnt
<p>Site 1 – Portland Way Reserve Primary control of Asparagus Fern and Buffalo Grass on natural areas of foreshore remnant vegetation.</p>	Follow up! Follow Up! Follow Up! For success
<p>Site 3 / Oak Avenue and Short Street Primary and secondary control of noxious and environmental weeds along foreshore area.</p>	Follow up! Follow Up! Follow Up! For success
<p>Crown land – Surrounding Holiday Haven Caravan Park Primary control of noxious and environmental weeds and replacement of exotic invasive garden plants with non-invasive native plants.</p>	Follow up! Follow Up! Follow Up! For success
<p>Site 4 / Sth River Road Reserve Noxious and environmental weed control and removal of mowing and illegal vehicles though installation of timber bollards and rocks on degraded areas to allow regeneration of existing remnant vegetation.</p>	Follow up! Follow Up! Follow Up! For success
<p>Site 5 – Tabourie Lake Foreshore/Beach Dunes and Car – park Area Noxious and environmental weed control across 14.3 hectares of remnant vegetation on beach dunes and Crampton Island, including Bangalay Sand Forest EEC.</p>	Follow up! Follow Up! Follow Up! For success
<p>Site 6 Eastern side of Saltwater Creek adjacent to Dermal St & Beach St Primary and secondary weed control of 2 hectares of remnant vegetation on the Eastern side of Saltwater Creek.</p>	Follow up! Follow Up! Follow Up! For success

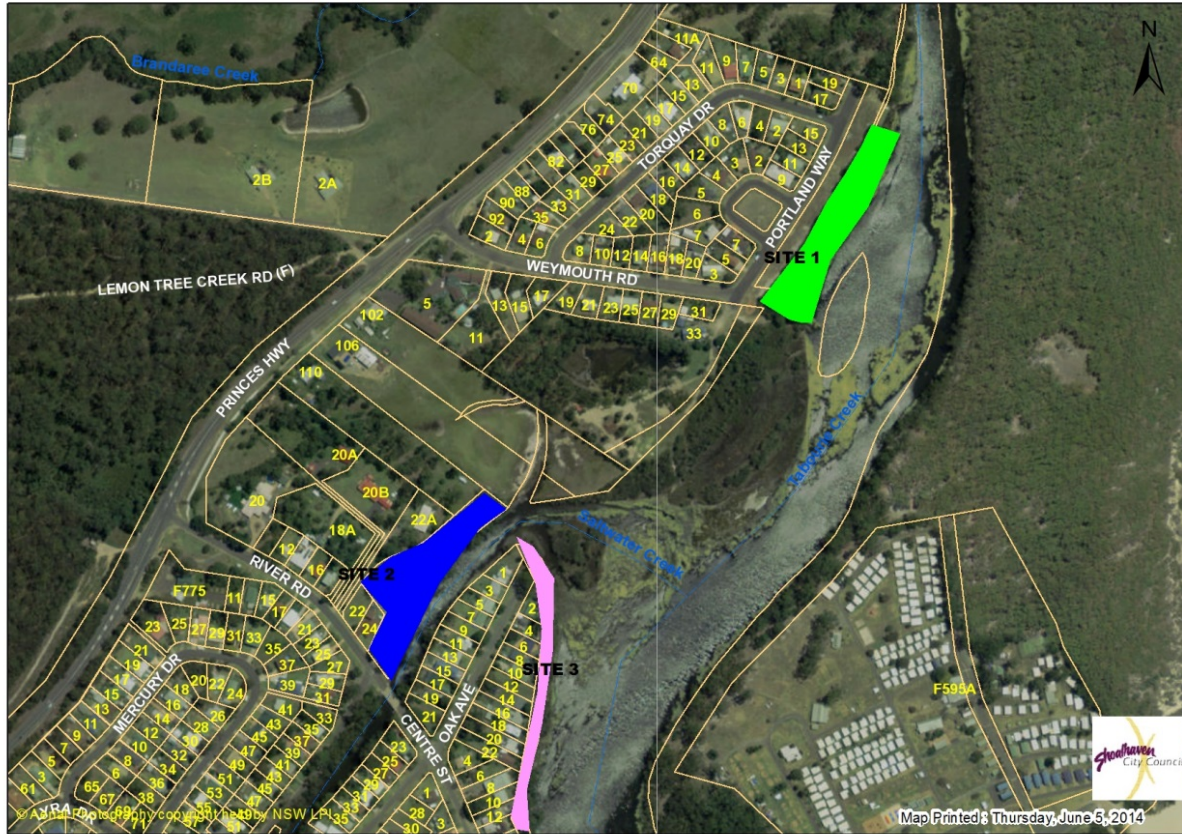
3. SHOALHAVEN BUSHCARE GROUP ACTION PLAN - To be in conjunction with attached site map.

NOTE: priority should be rated as H = High (within 12 months); M = Medium (1-3 years); L = Low

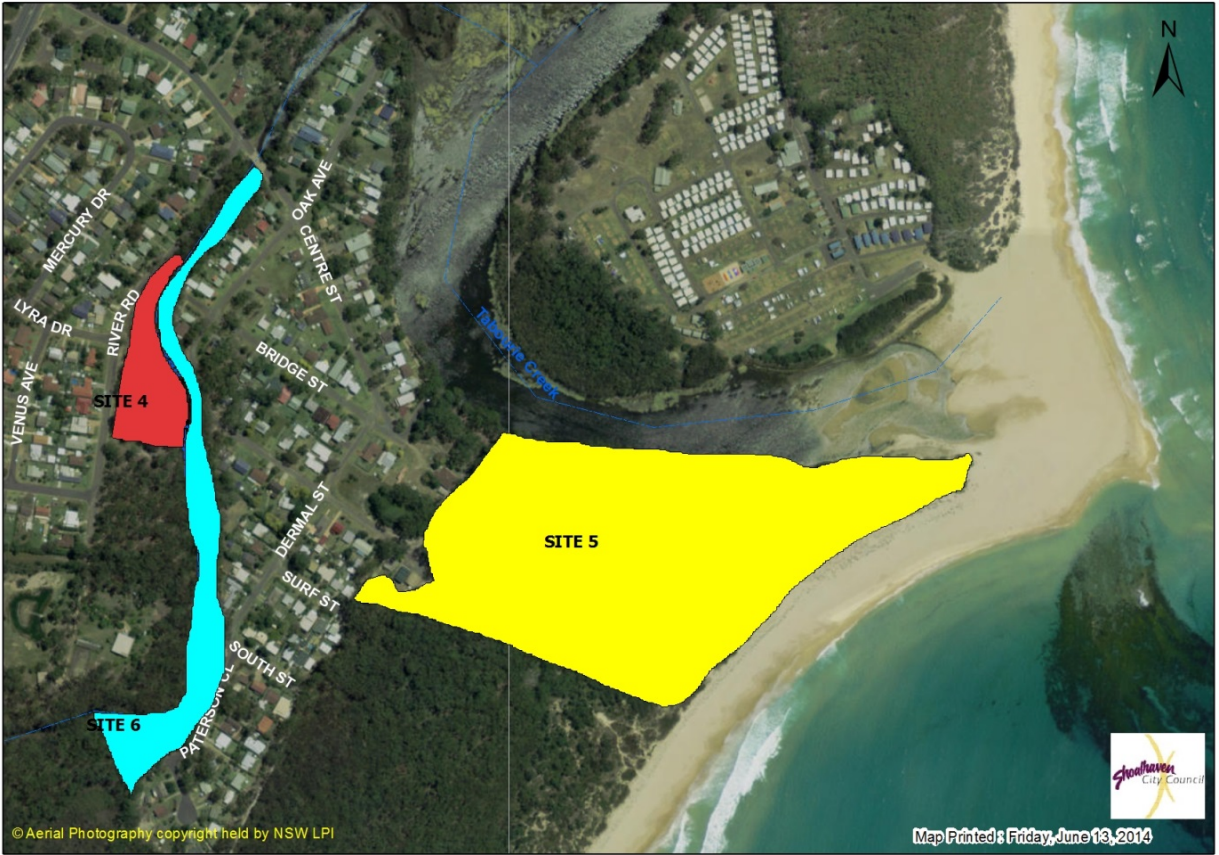
GROUP ACTION (these should relate to your project description)	PRIORITY	METHOD	TIME
<p>Site 1 – Portland Way Reserve CURRENT & EXISTING ACTIONS</p> <ol style="list-style-type: none"> 1. On-going control of <i>Asparagus aethiopicus</i> (Asparagus Fern); 2. On-going strategic control of <i>Stenotaphrum secundatum</i> (Buffalo Grass) in bushland/natural area in the reserve where it is smothering native ground covers and reducing diversity; and 3. Assist with any revegetation efforts and maintenance of the canoe launching facility at the northern end of the reserve. 	<p>H</p> <p>H</p> <p>M</p>	<ul style="list-style-type: none"> • Crown removal or spot spray • Spot spray with 1:200 glyphosate in winter • Planting as required 	<ul style="list-style-type: none"> • On going • Winter • As required
<p>Site 2 - Nth River Road Reserve NEW ACTIONS</p> <ol style="list-style-type: none"> 1. Installation of timber bollards along the immediate bank of Saltwater Creek to reduce the mowing to 3 metres from the bank to allow for foreshore vegetation to regenerate; 2. Consult with the adjoining property owner to replace planted exotics with local native alternative species; 3. Remove planted exotic vegetation and replace with local native species of the same form, shape and growth habit (see suggested revegetation list section 11); and 4. On-going control of exotic grasses and other weeds across the reserve. 	<p>M</p> <p>L</p> <p>L</p> <p>H</p>	<ul style="list-style-type: none"> • SCC to install bollards • SCC to consult with adjoining landholders • Bushcare Group to remove and plant as required • Spot spray and manual removal 	<ul style="list-style-type: none"> • 2016 • 2015 • 2016 • On going

<p>Site 4 / Sth River Road Reserve CURRENT & EXISTING ACTIONS 1. Manage population of <i>Pittosporum undulatum</i> to maintain biodiversity. 2. Target exotic grasses at River Road. River Road Regeneration Landscape Plan Assist council with implementing the River Rd Landscape Plan by: 1. Weed control and on-going maintenance of the vegetation islands and bollards.</p>	<p>L H</p>	<ul style="list-style-type: none"> • Prepare a Review of Environmental Factors for the removal of <i>Pittosporum undulatum</i> for sites 4 & 6 and implement recommendations of REF. • Spot spray annuals using glyphosate at rate of 1:100 	<ul style="list-style-type: none"> • Ongoing
<p>Site 5 – Tabourie Lake Foreshore/Beach Dunes and Car – park Area CURRENT & EXISTING ACTIONS 1. On-going maintenance of dunes, foreshore area and bushland areas around beach car park, including replacement planting and weed control; and 2. Report any construction maintenance issue to Council.</p>	<p>H H</p>	<ul style="list-style-type: none"> • Hand removal, spot spraying 	<ul style="list-style-type: none"> • Ongoing

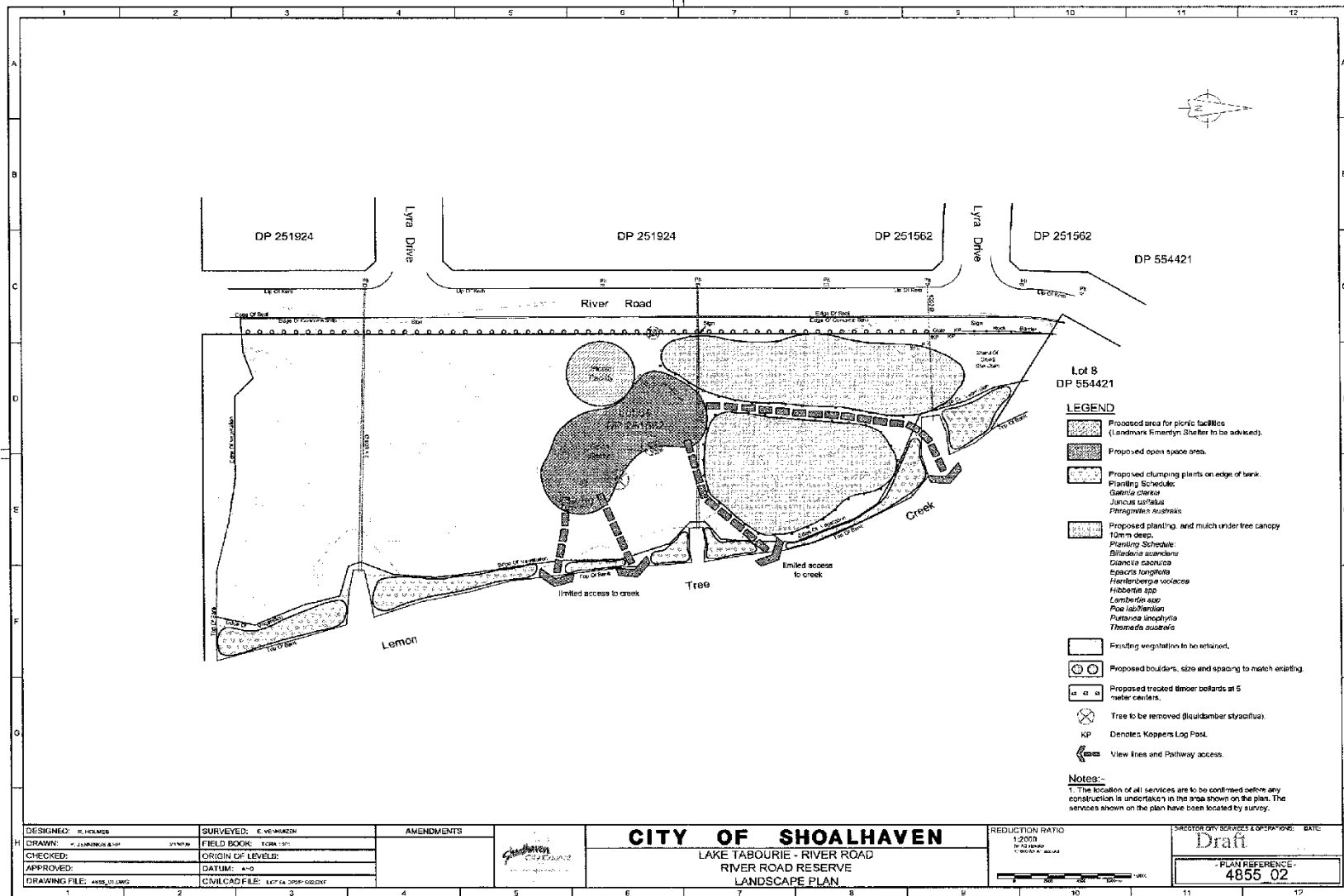
4. BUSHCARE GROUP ACTION PLAN MAP 1 (Sites 1, 2 & 3)



4 a) BUSHCARE GROUP ACTION PLAN MAP 2 (Sites 4, 5 & 6)



4 b) Landscape Drawing – Southern River Rd Reserve Regeneration Plan



5. BUSHCARE GROUP OH&S AND EQUIPMENT REQUIREMENTS

TYPE OF ACTIVITY	SWMS NAME INCLUDED
Manual weed control (cut & paint, scrape & paint etc.)	SWMS1276
Chemical control (spraying of herbicides)	SWMS1276
Planting	SWMS1255
Minor construction (walking track, fencing, outdoor furniture)	SWMS1200
Propagation & seed collection	SWMS1255
Education (school groups, field days etc.)	N/A
Other	N/A

6. COUNCIL SUPPORT

- a. Provision of tools, equipment, PPE and chemical;
- b. Provision of on-site Bushcare Field Officer for three hours once a month for 11 times per year;
- c. Assistance with all aspects of walking track maintenance as well as other Council assets on the reserve;
- d. Provision of mulch and plants within budget capacity;
- e. Free green waste tipping fees of up to \$27 per month;
- f. Assistance with technical advice; and
- g. Removal of rubbish – debris build up and rubbish collection will be stacked by Bushcare Group and designated aid workers, to be left at a convenient place for Council pickup.

7. HAS A SITE HAZARD AND RISK ASSESSMENT BEEN COMPLETED FOR THE BUSHCARE SITE?

Yes

Attach a copy of the site/s risk assessment to the plan

8. LIST THE PERSONAL PROTECTION EQUIPMENT (PPE) REQUIRED FOR VOLUNTEERS WHILST WORKING ON THE SITE

PPE Equipment Required	Date issued
First Aid Kit	2013
Gloves	2015
Sunscreen	2013
Insect repellent	2013

9. POSSIBLE FUTURE FUNDING

PROJECT	FUNDING SOURCE
Restoration of the Bangalay Sand Forest Complex EEC	State and/or Federal Government

10. PLAN WILL BE REVIEWED EVERY THREE YEARS – NEXT REVIEW DUE:

8 September 2018

Note: The group should review a summary of the Bushcare Policy & Procedures at the time of each review period.

11. LIST OTHER LOCAL/REGIONAL MANAGEMENT PLANS OR STRATEGIES THAT THIS PLAN RELATES TO:

DOCUMENT NAME	YEAR PRODUCED	PRODUCED BY
Tabourie Lake Entrance Management Policy and Review of Environmental Factors	2005	Shoalhaven City Council
Draft Shoalhaven Coastal Management Plan		Shoalhaven City Council
Tabourie Estuary Management Plan	1997	Shoalhaven City Council
Generic Community Land – Natural Areas Plan of Management	2002	Shoalhaven City Council
Shoalhaven Foreshore Reserve Policy	2005	Shoalhaven City Council

12. SUGGESTED SPECIES LIST FOR FUTURE SITE REVEGETATION

OVERSTOREY TREES	
Botanical	Common
<i>Acmena smithii</i>	Lilly Pilly
<i>Banksia integrifolia</i>	Coastal Banksia
<i>Banksia serrata</i>	Old Man Banksia
<i>Casuarina glauca</i>	She Oak / Swamp Oak
<i>Eucalyptus botryoides</i>	Bangalay
SHRUBS	
Botanical	Common
<i>Acacia longifolia</i>	Sydney Golden Wattle
<i>Acacia longifolia</i> spp <i>sophorae</i>	Coastal Wattle
<i>Allocasuarina littoralis</i>	Black Sheoak
<i>Breynia oblongifolia</i>	Dwarf's Apple / Coffee Bush
<i>Leptospermum laevigatum</i>	Coastal Tea Tree
<i>Monotoca elliptica</i>	Tree Broom Heath
<i>Notelaea longifolia</i>	Large Leaved / Mock Olive
<i>Pittosporum revolutum</i>	Rough Fruited Pittosporum
UNDERSTOREY (grasses, herbs, climbers)	
Botanical	Common
<i>Billardiera scandens</i>	Apple Dumpling Vine
<i>Carex longebrachiata</i>	Drooping Sedge
<i>Commelina cyanea</i>	Native Wandering Jew
<i>Dianella caerulea</i> var. <i>caerulea</i>	Native Blue Flax Lily
<i>Hardenbergia violacea</i>	Wandering Postman
<i>Hibbertia scandens</i>	Golden Guinea Flower
<i>Kennedia rubicunda</i>	Dusty Coral Pea
<i>Lomandra longifolia</i>	Spiky Headed Matt Rush
<i>Microlaena stipoides</i> var. <i>stipoides</i>	Weeping Grass
<i>Themeda australis</i>	Kangaroo Grass
<i>Viola hederacea</i>	Native Violet

13. SITE WEED LIST

Noxious	Other	Control Method
	<i>Acetosa sagittata</i> (Turkey Rhubarb)	Spot spray with glyphosate at ratio of 1:100 during spring – summer period, bag all seeds.
	<i>Asparagus densifomas</i> (Basket asparagus)	Crown out the rhizome and remove from site
	<i>Erythrina x sykesii</i> (Coral Tree)	Large trees need to be drilled and injected with neat glyphosate smaller regrowth can be treated using the cut stump method
	<i>Juncus acutus</i> (Spiny Rush)	Cut of all seed heads and bag and dispose of. Then spray plants with glyphosate at a ratio of 1:75 with a wetting agent added ensure the entire plant is covered, young plants can be hand pulled.
	<i>Stenotaphrum secunddatum</i> (Buffalo grass)	Spot spray with glyphosate in Winter at ratio of 1:100

14. BUHSCARE SITE 1,2 & 3 (The following species were recorded on site)

OVERSTOREY TREES	
Botanical	Common
<i>Acacia mearnsii</i>	Black Wattle
<i>Banksia integrifolia</i>	Coastal Banksia
<i>Casuarina glauca</i>	Swamp Oak
<i>Eucalyptus botryoides x saligna</i>	Bangalay x Blue Gum
<i>Exocarpus cuppressiformis</i>	Ballard Cherry
<i>Melaleuca ericifolia</i>	Swamp Paperbark
<i>Pittosporum undulatum</i>	Sweet Daphne
SHRUBS	
Botanical	Common
<i>Kunzea ambigua</i>	Tick Bush
<i>Monotoca elliptica</i>	Pigeon Berry Ash
<i>Acacia longifolia</i> spp. <i>longifolia</i>	Sydney Golden Wattle
<i>Santalum obtusifolium</i>	Sandalwood
UNDERSTOREY (grasses, herbs, orchids)	
Botanical	Common
<i>Baumea juncea</i>	Bare Twigrush
<i>Dianella caerulea</i>	Native Flax Lily
<i>Dianella longifolia</i>	Nodding Flax Lily
<i>Gahnia clarkei</i>	Sword Grass
<i>Imperata cylindrica</i>	Blady Grass
<i>Juncus krausii</i>	Sea Sedge
<i>Lomandra longifolia</i>	Spiny Matt Rush
<i>Phragmites australis</i>	Phragmites
<i>Pratia purpurascens</i>	White Root
<i>Pteridium esculentum</i>	Bracken
UNDERSTOREY (vines & climbers)	
Botanical	Common
<i>Hardenbergia violacea</i>	Native Violet
<i>Hibbertia scandens</i>	Native Guinea Flower
<i>Kennedia rubicunda</i>	Dusky Coral Pea

15. BUHSCARE SITE 4, 5 & 6 (The following species were recorded)

OVERSTOREY TREES	
Botanical	Common
<i>Acacia implexa</i>	Hickory
<i>Allocasuarina littoralis</i>	Forest sheoak
<i>Banksia integrifolia</i>	Coastal Banksia
<i>Banksia serrata</i>	Old Man Banksia
<i>Casuarina glauca</i>	Swamp sheoak
<i>Corymbia gummifera</i>	Red Bloodwood
<i>Eleocarpus reticulatus</i>	Blueberry Ash
<i>Eucalyptus botryoides</i>	Bangalay
<i>Eucalyptus maculata</i>	Spotted gum
<i>Eucalyptus pilularis</i>	Blackbutt
<i>Eucalyptus spp</i>	Stringy bark
<i>Exocarpus cupressiformis</i>	Ballart Cherry
<i>Glochidion ferdinandi</i>	Cheese tree
SHRUBS	
Botanical	Common
<i>Acacia longifolia</i>	Golden Wattle
<i>Acacia sophorae</i>	Coastal Wattle
<i>Acacia suaveolens</i>	Sweet scented wattle
<i>Acacia terminalis</i>	Sunshine wattle
<i>Acacia ulicifolia</i>	Prickly moses
<i>Banksia spinulosa</i>	Hairpin banksia
<i>Breynia oblongifolia</i>	Breynia
<i>Correa alba</i>	White Correa
<i>Dodonea triquetra</i>	Hop Bush
<i>Gompholobium latifolium</i>	Forest Pea
<i>Hibbertia linearis</i>	Guinea flower
<i>Kunzea ambigua</i>	Tick bush
<i>Leptospermum polygalifolium</i>	Lemon scented tea tree
<i>Leucopogon lanceolatus</i>	Lance beard heath
<i>Leucopogon parviflorus</i>	Beard heath
<i>Monotoca elliptica</i>	Tree broom heath
<i>Notelea longifolia</i>	Mock Olive
<i>Homalanthus popuifolius</i>	Bleeding Heart
<i>Ozothamnus diosmifolium</i>	Everlasting daisy
<i>Persoonia linearis</i>	Geebung
<i>Pimelia linifolia</i>	Riceflower
<i>Platysace lanceolata</i>	Carrot tops
<i>Podocarpus spinulosus</i>	Plum pine
<i>Prostanthera lasianthos</i>	Mint Bush
<i>Pultanea blakelyi</i>	Bush pea
<i>Pultanea daphnoides</i>	Bush pea
<i>Santalum obtusifolium</i>	Sandalwood

<i>Solanum stelligerum</i>	Devils needles
<i>Xylomelum pyriforme</i>	Woody Pear
<i>Zieria smithii</i>	Sandfly zieria
UNDERSTOREY (grasses, herbs, orchids)	
Botanical	Common
<i>Dianella caerulea</i>	Paroo lily
<i>Dicondra repens</i>	Kidney herb
<i>Entolasia stricta</i>	Wiry panic
<i>Eragrostis brownii</i>	Browns lovegrass
<i>Hydrocotyle peduncularis</i>	Pennywort
<i>Isolepis nodosa</i>	Nodding Rush
<i>Lepidosperma laterale</i>	Rapier sedge
<i>Lepidosperma spp</i>	Rapier sedge
<i>Lomandra filiformis</i>	
<i>Lomandra longifolia</i>	Spiny matt rush
<i>Lomandra obliqua</i>	Fish bones
<i>Microlaena stipoides</i>	Weeping grass
<i>Opercularia aspera</i>	Stink weed
<i>Oplismenus imbecillus</i>	Basket grass
<i>Pratia purpurescens</i>	Whiteroot
<i>Xanthorrhoea media</i>	Grass tree
UNDERSTOREY (vines & climbers)	
Botanical	Common
<i>Billardaria scandens</i>	Custard apples
<i>Cissus hypoglauca</i>	Water Vine
<i>Clematis aristata</i>	Old mans beard
<i>Glycine clandestina</i>	Slender Love Creeper
<i>Hardenbergia violaceae</i>	False sarsparilla
<i>Hibbertia scandens</i>	Guinea flower
<i>Kennedia prostrata</i>	Running postman
<i>Kennedia rubicunda</i>	Dusky coral pea
<i>Parsonsia straminea</i>	Silk Pod
<i>Smilax glycyphylla</i>	Sarsaparilla
<i>Stephania japonica</i>	Snake vine
<i>Tylophera barbata</i>	Tylophera