



ORIENT POINT WETLANDS BUSHCARE ACTION PLAN

CONTACT INFORMATION

Group Name:	Orient Point Wetlands Bushcare Group
Contact:	Wendy Roberts
Address:	
Tel:	0416 102 475
Email:	
Reserve Name:	Orient Point Wetland
Reserve No:	CCU281
Land Tenure:	Shoalhaven Council
Comm. Land Type:	Natural Area - Wetland

1. BUSHCARE GROUP GOALS

The goals of the Orient Point Wetland Bushcare Group are as follows:

1. To protect, regenerate the degraded section of the Orient Point wetland, with particular attention to the salt marsh vegetation, so as to improve the reserves habitat, biodiversity and aesthetic values.
2. Raise the local communities' awareness of the natural values of the wetland through education program with school, local residents and visitors.
3. Improve the informal walking trail through the wetland to provide a well formed loop walk and educational signage.
4. Prevent illegal vehicle access onto the salt marsh wetland areas to prevent on-going damage.

(see actions tables for more details)

2. SHOALHAVEN BUSHCARE GROUP ACTION PLAN (to be in conjunction with attached site map)

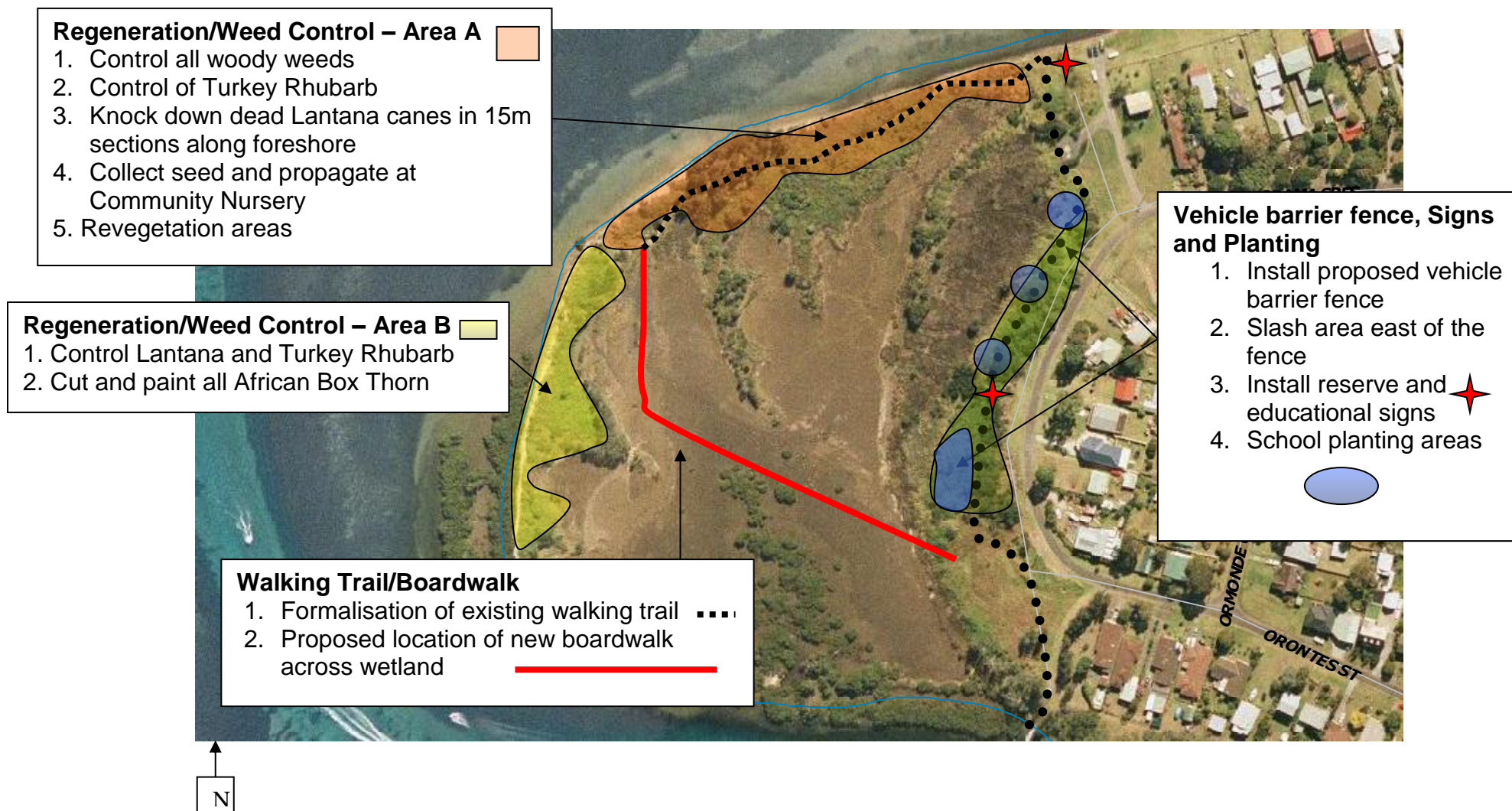
NOTE: Priority should be rated as H = High (within 12 months); M = Medium (1-3 years); L = Low (5yrs>)

GROUP ACTION	PRIORITY	METHOD	TIME
Wetland Regeneration – Area A 1. Apply for grant funding to employ qualified contractors to undertake primary weed control 2. Control and remove all woody weeds from wetland in following priority: a. Lantana b. African Box Thorn c. Blackberry d. Bitou Bush e. Psoralla 3. Remove/knock down dead Lantana canes in 10-15 metres sections along foreshore of reserve to retain sections for habitat and reduce harbour for feral animals. 4. Council and Bushcare group to spot spray all infestations of Turkey Rhubarb. 5. Spot spray all infestations of Kikuyu grass, where it is actively invading salt marsh edges and regeneration/revegetation areas. 6. Bushcare to collect seed from site for propagation at the Shoalhaven Volunteer Community Nursery for re-planting on wetland. 7. Revegetate areas in 10-15 slots where the dead lantana canes have been cleared.	1. H 2. H 3. H 4. M 5. M 6. H 7. H	1. Cut and paint box thorn, Psoralla and splatter gun Lantana, Bitou Bush. 2. Lantana to be thrashed using mechanical brush cutter and brush hooks. Insure Turkey Rhubarb has been treated and is not in seed. 3. Spot spray using Glyphosate at a ratio of 1:100 during spring – summer 4. Spot spray using Glyphosate at a ratio of 1:100 during cooler months 5. Bushcare Support Worker to assist with training group in seed collection. 6. Insure all plants are guarded and staked to prevent predation from rabbits. 7. Completed	1.Spring Summer 2. 2010-11 3. Spring summer 4. Winter 5. As needed 6. Autumn 2010-2011 7.On going
Wetland Regeneration – Area B 1. Council to control Lantana and Turkey Rhubarb 2. Council to cut and paint African Box Thorn	1. H 2. H	1. Splatter gun Lantana, spot spray Turkey Rhubarb 2. Cut and paint	1. 2010-11 2. Completed

GROUP ACTION	PRIORITY	METHOD	TIME
Formalisation of the Wetland Walking Trail <ol style="list-style-type: none"> 1. Make a submission to Shoalhaven Council's Walking Track Strategy to include the wetland loop walk in the strategy. 2. Seek funding jointly with Council to construct a boardwalk linking Orama Cr. with the existing walking trail (see map). 	<ol style="list-style-type: none"> 1. M 2. M 	<ol style="list-style-type: none"> 1. Orient Pt Bushcare Group to make a submission during the consultation period. 2. Apply through tourism grants or regional development projects 	<ol style="list-style-type: none"> 1. 2010-11 2. 2010-11
Education and Awareness Raising <ol style="list-style-type: none"> 1. Apply for funding to install educational signage highlighting the conservation values of Saltmarsh vegetation of the wetland. 2. Employ a project officer to work with Culburra Public School to undertake an educational program with the kids which would involve: <ol style="list-style-type: none"> a. Field trips b. Tree planting c. Other educational material developed by the kids. 	<ol style="list-style-type: none"> 1. M 2. H 	<ol style="list-style-type: none"> 1. Apply for grant funding and work with Council on signs design. 2. Group to seek grant funding, Council to employ project officer 	<ol style="list-style-type: none"> 1. 2010 2. Completed

GROUP ACTION	PRIORITY	METHOD	TIME
Prevention of Illegal Vehicle Access – Border of Orama Cr and Reserve. 1. Apply for funding to install a vehicle barrier fence along the boundary of Orama Cr. Road reserve and the Eastern boundary of the reserve, (see map). 2. Council to slash and remove Lantana and Psoralea along the Eastern boundary of the reserve. 3. Council to install cable vehicle barrier fence. 4. Council to spray out areas for planting and prepare site 5. Bushcare Group and Culburra School to plant out designated areas on the reserve side of the fence for National Tree Day 6. Bushcare Group to maintain plantings 7. Council to install reserve signage. 8. Council to slash road reserve on the Western side of Orama Cr, between road edge and fence.	1. H 2. M 3. H 4. M 5. M 6. M 7. M 8. H	1. Council and Bushcare Group to apply to State government 2. Council to oversee slashing 3. Council to manage installation of fence 4. Spot spray zones for planting 5. Council and Bushcare Group to coordinate National Tree Day planting with schools. 6. Spot spray around plants and maintain tree guards if needed watering during first summer period. 7. Install signage 8. Apply to Council to have included as new area for maintenance	1. Completed 2. Completed 3. Completed 4. Completed 5. 6. 2010 & on going 7. Completed 8. 2010 & on going

3. BUSHCARE GROUP ACTION PLAN MAP



4. BUSHCARE GROUP OH&S & EQUIPMENT REQUIREMENTS

Type of Activity	Yes	SWMS name included
Manual weed control (cut & paint, scrape and paint etc)	√	SWMS 060 Manual Weed Control
Chemical control (spraying of herbicides)	√	SWMCSNR0040 Spraying using a hand held or backpack unit
Planting	√	SWMSNR030 Planting and seed collection
Minor construction (walking track, fencing, outdoor furniture)	√	
Propagation & seed collection	√	As above
Education (school groups, field days etc)	√	
Other		

5. COUNCIL SUPPORT

- a. Assistance with large areas of weed control
- b. Provision of equipment & materials, PPE and chemical (within the budget)
- c. Grant funding application and management
- d. Provision of Bushcare Support Worker 6 times a year
- e. Contract management for installation of fence, weed control works and track construction
- f. Technical advice
- g. Plant, guards, stakes, grow tablets and water crystals

6. HAS A SITE HAZARD AND RISK ASSESSMENT BEEN COMPLETED FOR THE BUSHCARE SITE?

Yes √

Attach a copy of the site/s risk assessment to the plan.

7. LIST THE PERSONAL PROTECTION EQUIPMENT REQUIRED FOR VOLUNTEERS WHILST WORKING ON THE SITE

PPE Equipment Required
First Aid Kit
Gloves
Sunscreen
Insect repellent

8. POSSIBLE FUTURE FUNDING

Project	Funding source
Construction of the boardwalk across wetland	Tourism grants, Regional Development Grants
Salt marsh regeneration	SRCMA

**9. PLAN WILL BE REVIEWED EVERY THREE YEARS – NEXT REVIEW DUE:
APRIL 2013**

The group should review a summary of the Bushcare Policy & Procedures at the time of each annual review

10. PLEASE LIST OTHER LOCAL OR REGIONAL MANAGEMENT PLANS OR STRATEGIES THAT THIS PLAN RELATES TO

Name of document	Produced by
Community Plan of Management – Natural Areas	1996
Shoalhaven River Estuary Management Plan	2008
Draft Shoalhaven Coastal Management	2010
Shoalhaven Walking Track Strategy	2010

11. SUGGESTED SPECIES LIST FOR FUTURE SITE REVEGETATION

OVERSTOREY TREES	
Botanical	Common
<i>Acacia binervata</i>	Two Vicky Hickory
<i>Avicenna marina</i>	Grey Mangrove
<i>Callistemon salignus</i>	Weeping bottlebrush
<i>Casuarina glauca</i>	Swamp She Oak
<i>Melaleuca ericifolia</i>	Swamp Paperbark / Teatree
<i>Myoporum acuminatum</i>	Boobialla
SHRUBS	
Botanical	Common
<i>Acacia longifolia</i>	Sydney Golden Wattle
<i>Acacia longifolia</i> spp <i>sophorae</i>	Coastal Wattle
<i>Breynia oblongifolia</i>	Dwarf's Apple / Coffee Bush
<i>Crinum pedunculatum</i>	Swamp Lily
<i>Monotoca eliptica</i>	Tree Broom Heath
<i>Pittosporum revolutum</i>	Yellow Pittosporum
UNDERSTOREY (grasses, herbs, climbers)	
Botanical	Common
<i>Baumea juncea</i>	Bare Twig Rush
<i>Carpobrotus gaucescens</i>	Pig Face
<i>Hibbertia scandens</i>	Golden Guinea Flower
<i>Isolepis nodosa</i>	Knobby Club Rush
<i>Juncus kraussii</i>	Dune slack rush / matting rush
<i>Lomandra longifolia</i>	Spiky Matt Rush
<i>Rubus parvifolius</i>	Native Raspberry
<i>Samolus repens</i>	Creeping Brookweed
<i>Sarcocornia quinqueflora</i>	Beaded Samphire / Glasswort
<i>Selliera radicans</i>	Swamp Mat
<i>Sporobolus virginicus</i>	Dropseed
<i>Suaeda australis</i>	Seablite
<i>Tetragonia tetragonioides</i>	New Zealand spinach / Warrigal greens
<i>Triglochin striata</i>	Three-rib arrowgrass
<i>Zoysia macrantha</i>	Prickly Couch

12. SITE WEED LIST

Noxious	Other	Control Method
African Boxthorn (<i>Lycium ferocissimum</i>)		Cut and paint stump with neat round up
Bitou Bush (<i>Chrysanthemoides monilifera</i> spp <i>rotundata</i>)		Spot spray larger bushes and hand pull smaller seedlings
Blackberry (<i>Rubus fruiticosa</i>)		Scrap and paint the stems or dig out smaller plants
Lantana (<i>Lantana camara</i>)		Splatter gun large infestations as per directions or cut and paint with neat round up
	Blue psoralea (<i>Psoralea pinnata</i>)	Cut and paint stump with neat Roundup
	Cassia (<i>Senna pendula</i> spp <i>glabrata</i>)	Cut and paint with neat Roundup
	Fishbone Fern (<i>Nephrolepis cordifolia</i>)	Hand dig out smaller infestation or spray larger ones can be sprayed with Metsulfron Methyl + wetting agent
	Formosan Lily (<i>Lilium formosanum</i>)	Cut and drip neat Roundup onto cut end
	Montbretia (<i>Crocasmia x crocosmiiflora</i>)	Hand dig out smaller infestation and remove bulbs from site or spray larger ones can be sprayed with Metsulfron Methyl + wetting agent
	Turkey Rhubarb (<i>Acetosa sagittata</i>)	Spot spray with glyphosate at ratio of 1:100

ATTACHMENT 1: Group support and skill development needs. This information helps to identify gaps that may exist between what the group require to function effectively and what the group has available. **This focuses on the group, overall, not individual members.**

<i>Tick one box only</i>	We are absolute beginners – don't know a great deal	We know a bit – enough to get by most of the time	We know quite a lot – and we know when to seek help	There's probably not much more we can learn on this	Comments
OH&S – develop and follow risk assessment					
Develop and/ or monitor Action Plan					
Plant identification – local native plants					
Weed identification & control methods					
Bush regeneration methods					
Seed collection & propagation					
Group planning and decision making					
Managing neighbour relations					
Community education – schools, neighbours etc					
Volunteer/ group member recruitment					
Preparing grant applications					

List below the 10 most common plants that are indigenous to the area.	List below the 10 most common plants that are <i>not</i> indigenous to the area.
Can all of the group regular volunteers identify these? YES NO circle one	Can all of the group regular volunteers identify these? YES NO circle one

Bushcare Group Name **Coordinator Name** **Signature** **Date** / /