

BASIN VIEW - PARKCARE ACTION PLAN

Document Number: D23/381240
Approved Date: 21/11/2023
Produced By: City Services

File: 35254E
Approval Document Number:
Review Date: 21/11/2028

RESERVE INFORMATION

| | |
|-----------------------|--|
| Group Name: | Basin View Parkcare Group |
| Reserve Name: | Collingwood Reserve / Basin View Boat Ramp Reserve / Road Reserve off Tallyan Point Road |
| Location: | Basin View |
| Reserve No: | BBV587 |
| Land Tenure | Crown R76652 |
| Comm Land Type | Park / Road Reserve |

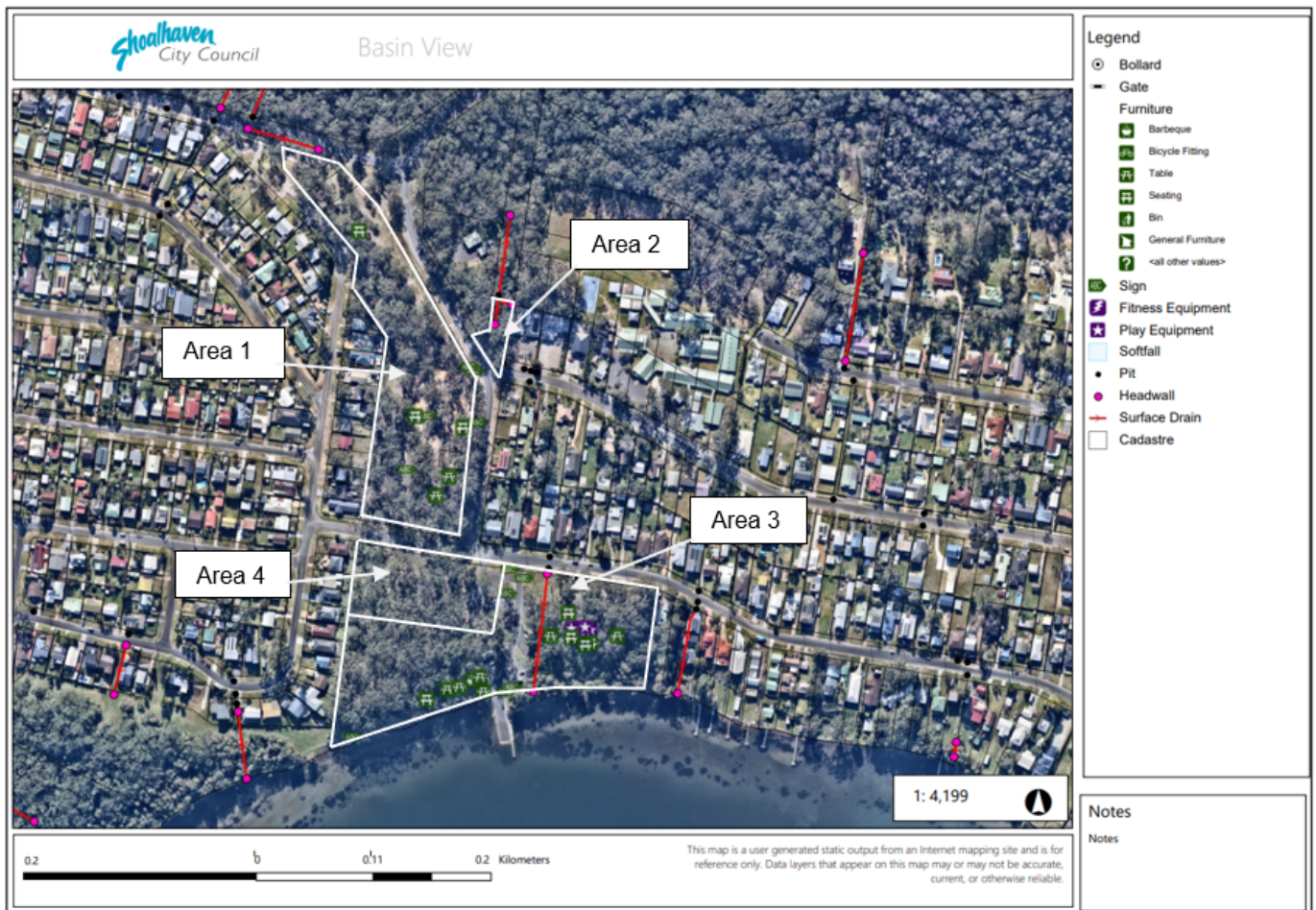
1. PARKCARE GROUP GOALS

To maintain and improve the visual integrity and enhance the physical amenity of Collingwood Reserve, the Basin View Boat Ramp and the road reserve next to the shops in Tallyan Point Road.

2. SHOALHAVEN PARKCARE GROUP ACTIVITIES TABLE

| GROUP ACTION | PRIORITY | METHOD | TIMING |
|---|----------|--|---------|
| Area 1 - Maintain garden beds, weed removal, mowing in between Council mows, mulching, painting of park furniture, litter pick up | M | Hand tools, ride-on mower & spray | Ongoing |
| Area 2 – Weeding, laying a mulch path, litter pick up, mowing, painting of new seats if approved | M | Hand tools & ride-on mower | Ongoing |
| Area 3 – Litter pick up | M | By hand or nifty nabbers | Ongoing |
| Area 4 – Mowing in between Council mows, litter pick up | M | By hand or nifty nabbers & ride-on mower | Ongoing |

3. PARKCARE GROUP ACTION PLAN MAP



4. PARKCARE GROUP WHS DOCUMENTS

| Type of Activity | WHS Document Name | Document No. |
|----------------------------------|---|-----------------|
| Landscape maintenance - mulching | Operational Risk Assessment | P10.F03/FM22/16 |
| Painting park furnishings | Park Furnishings and Play Equipment Maintenance | SWMS1201 |
| Weeding | Operational Risk Assessment | P10.F03/FM22/16 |
| Weed spraying | Herbicide Spraying | SWI129(V3) |
| Leaf blowing | Blower (Petrol or Battery) | SWI142 (V3) |

| WHS Document Name | Document No. |
|---|-------------------|
| Site Safety Plan | As per each group |
| Workplace Inspection Checklist | D13/17752 |
| Incident Reporting, Investigation and Corrective Action | PRD22/123 |
| Bushcare/Parkcare Policy | POL22/29 |

| | |
|-------------------------------------|-----------|
| Bushcare/Parkcare Procedure | PRD22/208 |
| Contractor & Volunteer Management | PRD22/122 |
| Personal Protective Equipment (PPE) | PRD21/68 |
| Work Health & Safety Policy | POL20/12 |
| Risk Management | PRD22/22 |

5. COUNCIL SUPPORT

| |
|--|
| Provision of landscape materials including plants and mulch as budget permits. |
|--|

| |
|---------------------------------------|
| Disposal of waste costs as necessary. |
|---------------------------------------|

| |
|---|
| Provision of building materials and paints as budget permits. |
|---|

6. HAS A SITE HAZARD AND RISK ASSESSMENT BEEN COMPLETED FOR THE PARKCARE SITE?

Risk assessments are completed daily as part of the Site Recording Group Sheet & Site Specific Risk Assessment Form.

7. LIST THE PERSONAL PROTECTION EQUIPMENT REQUIRED FOR VOLUNTEERS WHILST WORKING ON THE SITE

| PPE Equipment Required | Date issued |
|------------------------|-------------|
| First Aid Kit | As Required |
| Gloves | As Required |
| Sunscreen | As Required |
| Insect repellent | As Required |

8. POSSIBLE FUTURE FUNDING

| Project | Funding source |
|--|----------------------------------|
| Making of a small grassed area near shop carpark in Area 2 | Shoalhaven City Council or grant |
| Two seats to be placed in Area 2 – Possibly made by the local Men’s Shed to keep costs low | Shoalhaven City Council |

9. REVIEW

This plan will be reviewed six years from its approval but can be reviewed sooner if agreed.

The group should review a summary of the Parkcare Policy & Procedures at the time of each annual review.

10. LOCAL OR REGIONAL MANAGEMENT PLANS OR STRATEGIES THAT THIS PLAN RELATES TO

| Name of document | Year it was produced | Produced by |
|------------------------------------|-----------------------------|-------------------------|
| Generic Plan of Management - Parks | 2001 | Shoalhaven City Council |

**11. RECOMMENDED PLANTING SPECIES LIST
(NO VIEWS TO BE IMPACTED)**

| Name or type of plant | Maximum Height | Structural Role in the park vegetation |
|------------------------------|-----------------------|--|
| Grevillea species | Up to 2m | Atheistic value, attracts birds |
| Coastal Rosemary | Up to 2m | Atheistic value, attracts birds and insects for pollination |
| Blue Flax Lily | Up to 1.5m | Atheistic value, low maintenance, attracts butterfly's and birds |
| Snake Vine | Up to 2m | Atheistic value |
| Mat Rush | 0.3 to 0.4m | Attracts pollinating insects, low maintenance |
| Purple Fan Flower | Up to 0.8m | Ground cover, prevents weed growth |

12. SITE WEED LIST

| Common Name | Extent | Control method used by group |
|--------------------|---------------|-------------------------------------|
| Flat weed | M | By hand or spray |
| Panic veldt grass | M | By hand or spray |
| Fireweed | L | By hand or spray |
| Saw grass | M | By hand or spray |
| Onion weed | M | By hand or spray |
| Blackberry | L | By hand or spray |

All works undertaken pursuant to this action plan are to be to the satisfaction of the Open Spaces Assets Coordinator

Parkcare Group Name Basin View Parkcare Group

Coordinator Name Stuart McGregor

Signature

Date/.../...

