

## SHOALHAVEN HEADS NATIVE BOTANIC GARDEN PARKCARE ACTION PLAN

**Document Number:** D23/5943 • **Approved:** 30/6/2023  
**Approval Document Number:** D23/143251 • **File:** 31955E  
**Produced By:** City Services • **Review Date:** 30/6/2029

### RESERVE INFORMATION

<b>Reserve Name:</b>	Shoalhaven Heads Native Botanic Garden Parkcare Group (SHNBSG)
<b>Location:</b>	Curtis Reserve
<b>Reserve No:</b>	NSH 035
<b>Land Tenure</b>	Council
<b>Comm Land Type</b>	Freehold - General community use

### 1. PARKCARE GROUP GOALS

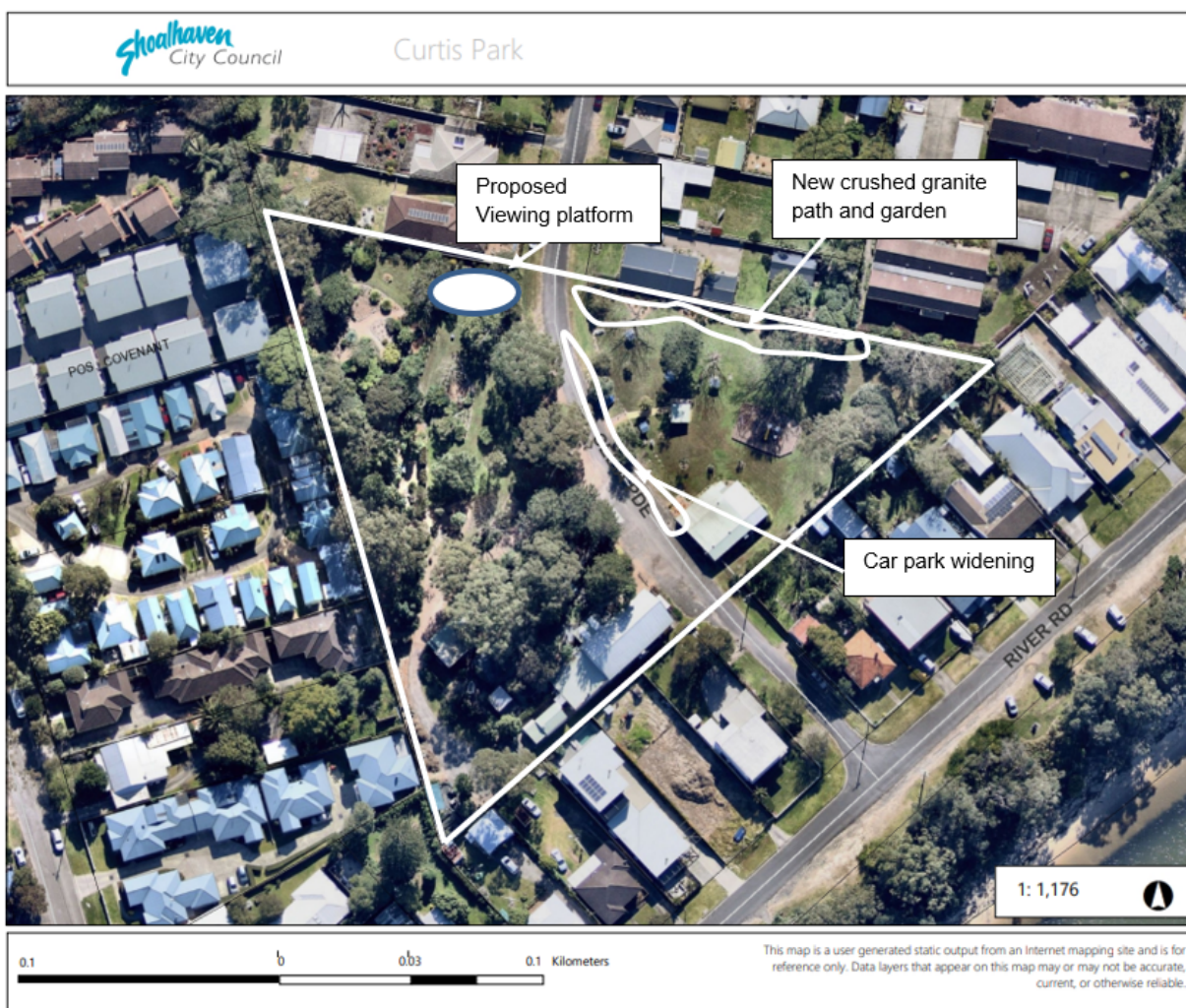
Maintain the concept of the Shoalhaven Heads Native Botanic Garden, located in Curtis Reserve, as a demonstration and showcase of the plants of Australia.
Maintain the plantings and the grounds of Curtis Reserve.
Promote the educational value of the Shoalhaven Heads Native Botanic Garden for the local community and for visitors from further afield.
Initiate, design and implement improvements and upgrades to the infrastructure and the plantings of the Garden within the concept of the Shoalhaven Heads Native Botanic Garden.

### 2. SHOALHAVEN PARKCARE GROUP ACTIVITIES TABLE

GROUP ACTION	PRIORITY	METHOD	TIMING
Propagate, collect, grow, maintain and exhibit Australian native plants	High	Volunteers	Ongoing
Maintain the grass and garden beds through a program of mowing, mulching and weeding as required	High	Mowing and hand tools	Ongoing

Maintain minor parks infrastructure (excluding children's playground equipment), plus the Botanic Garden - specific improvements (e.g., the Arbor entrance, plant nursery, interpretive signage, irrigation, etc) on the site	High	Hand tools and equipment as appropriate	Ongoing
Conduct educational tours, assist visiting groups and provide information presentations	High	Volunteers	Ongoing
<p>Develop a wheelchair accessible boardwalk at the northern edge of the park, on both sides of Celia Parade, incorporating a sculptural viewing platform. This to also accommodate expansion of adjoining garden beds.</p> <p>Note;</p> <p>During 2021-2022 detailed construction &amp; engineering drawings were prepared and consultation with surrounding residents was undertaken. However very expensive construction costs were quoted and indicated that the project is unrealistic at this stage. Consequently, the project has been stopped for the time being, with the intention that the concept remains as a deferred aspiration.</p> <p>In the interim, in late 2022, the group completed a crushed granite pathway in the northeast area following the footprint envisaged for the boardwalk project. The adjoining garden beds were also expanded. It is proposed that these amenities will be extended to enable a wheelchair accessible circuit around the outer perimeter and children's playground area.</p>	Medium to High	Professional design, grant applications, and engagement of contractors	2023/2024
Upgrade adjoining carparking arrangements in parts of Celia Parade where these have not yet been formalised. Subject to Council regulations and procedures.	High	Plans by Council staff. Work by volunteers	2023

### 3. PARKCARE GROUP ACTION PLAN MAP



### 4. PARKCARE GROUP WHS DOCUMENTS

Type of Activity	WHS Document Name	Document No.
Weed control	Herbicide Spraying	SWMS1408
Mowing	Operate & Maintain Ride on Mower / Tractor	SWI50 (v2)
Landscape construction & maintenance (includes hand weeding)	Operational Risk Assessment	SWMS1200
Park furnishing cleaning	Park Furnishings and Play Equipment Maintenance	SWMS1201
BBQ Cleaning	Cleaning Outdoor Amenities	PRD18/9
Leaf blowing	Blower _(Petrol or Battery)	SWI142 (V2)
Chipping branches/leaves	Chipper	SWI181
Compacting crushed granite etc	Plate Compactor	SWI159 (V2)

<b>WHS Document Name</b>	<b>Document No.</b>
Workplace Inspection Checklist	D13/177520
Incident Reporting, Investigation and Corrective Action	PRD22/123
Bushcare/Parkcare Policy	POL22/29
Bushcare/Parkcare Procedure	PRD22/208
Contractor & Volunteer Management	PRD22/122
Personal Protective Equipment (PPE)	PRD21/68
Work Health & Safety Policy	POL20/12
Risk Management	PRD22/22

<b>WHS Incident Documents</b>	<b>Document No.</b>
Incident Note – No Injury	P21.F02 - Sample
Incident Report – Injury	P21.F02 - Sample
Hazard & Incident Note – No Injury	P21.F02 - Sample

## 5. COUNCIL SUPPORT

Technical advice and support, including training as required
Provide an adequate water supply appropriate to Botanic Garden needs
Arrange bulk supplies of mulch as required and if available
Provide plants, materials and garden tools as required and as budget allows
Remove surplus vegetation pruned, trimmed and collected from the Garden (included in the \$400 yearly allocation)

## 6. HAS A SITE HAZARD AND RISK ASSESSMENT BEEN COMPLETED FOR THE PARKCARE SITE?

Risk assessments are completed daily as part of the Site Recording Group Sheet & Site Specific Risk Assessment Form.

## 7. LIST THE PERSONAL PROTECTION EQUIPMENT REQUIRED FOR VOLUNTEERS WHILST WORKING ON THE SITE

<b>PPE Equipment Required</b>	<b>Date issued</b>
First Aid Kit	Have their own
Gloves	As Required

Sunscreen	As Required
Insect repellent	As Required

## 8. POSSIBLE FUTURE FUNDING

The following projects will be considered as funding opportunities become available:

Project	Funding source
Upgrade outdated picnic tables with new wheelchair accessible sheltered picnic tables, located in vicinity of the wheelchair accessible sheltered barbecue installed by Council on the eastern side of Curtis Reserve. First new wheelchair accessible sheltered picnic table is of high priority, to be installed in 2023, utilising CBP22-2485 grant secured by SHNBG	CBP Grant / SHNBG volunteers
Although of lower priority, a second new wheelchair accessible sheltered picnic table should be installed as soon as funds permit.	Council / SHNBG grant application
Install a significant attractive tourist direction sign on the southern side of River Road, immediately opposite Celia Parade. The need for this arises from our out-of-the-way location, tucked away in a small side street, which many tourists have difficulty finding. A professionally designed proposal is being prepared for consultation with Council. High priority	SHNBG funds
Develop security arrangements to better protect the Garden's assets, including the many rare and endangered plant specimens on public display. It is intended to mount a substantial capacity security camera to monitor the park's street frontages. Such unit to be professionally installed, with procedures to be in accordance with Council requirements, and subject to review after 12 months.	Public donations and SHNBG funds
Obtain an electricity connection to the two adjoining garden sheds, to facilitate proper lighting, safe kitchen procedures, battery charging for garden tools, and to support our digital / computer facilities. High priority after 15 years without an electrical connection.	Council installation, SHNBG to fund running costs
Develop for community and Council consultation the concept of a <i>Botanic Walk</i> to link the Botanic Garden to the nearby Shoalhaven River. Upper level along the southern	Grant application / volunteers / SHNBG funds

side of River Road and lower level along the water's edge, probably between Carter's Corner and the viewing platform opposite the Heads Hotel.	
Develop new garden beds and planting on the eastern side of Curtis Reserve	Volunteers and fundraising
Investigate options for reducing usage of potable water, including expansion of irrigation systems	Volunteers and fundraising
Investigate options for developing a dry creek bed feature	Volunteers and grant funding
Expand interpretive signage to ensure that over 300 plant species are all clearly labelled with state -of-the art adjustable stainless steel name display mounts and/or more detailed green information plaques.	Fund raising and sponsorships
Continue rock edging around gardens	Volunteers
Upgrade of the children's playground equipment to a nature playpark theme that compliments its Botanic Garden setting. Replacement of the existing "tired" equipment on the eastern side is scheduled for 2028, but an earlier upgrade / replacement is preferred if possible.	Council / SHNBG grant application
Upgrade facilities to enable better public access to drinking water. Stainless steel multi-purpose water station is required to replace the inadequate water bubbler on the eastern side in 2023. High priority. There is also a need for a bubbler / water station in proximity to toilets on western side. Lower priority	Shoalwater / Council / SHNBG volunteers.
Update Plan of Management and prepare Thematic Plan for site	Volunteers and collaboration with Council and Botanic Gardens Australia New Zealand (BGANZ) Donations and SHNBG funds

## 9. REVIEW

This plan will be reviewed six years from its approval but can be reviewed sooner if agreed.

The group should review a summary of the Parkcare Policy & Procedures at the time of each review.

## 10. LOCAL OR REGIONAL MANAGEMENT PLANS OR STRATEGIES THAT THIS PLAN RELATES TO

Name of document	Year it was produced	Produced by
Generic Plan of Management	2001	Shoalhaven City Council

## 11. RECOMMENDED PLANTING SPECIES LIST

With the limited space available at Curtis Reserve becoming increasingly planted out, SHNBSG will increasingly concentrate on planting vulnerable and threatened species of Australian natives, with a view to developing excellence with such exhibits.

Examples of these to date include:

- *Acacia aphylla*
- *Adenanthos forrestii*
- *Banksia Vincentia*
- *Brachychiton ormeau* – Ormeau Bottle Tree
- *Callitris oblonga (corangensis)*
- *Citrus inodora*
- *Clausena smyrelliana* – Greg's Wampi
- *Cooperhooia georgei*
- *Davidsonia johnsonii*
- *Diploglottos campbellii*
- *Glycosmis trifoliata* – Orange Berry
- *Graptophyllum ilicifolium*
- *Hicksbeachia Pilosa* - Red Bopple Nut
- *Notelaea lloydii* – Lloyd's Olive
- *Hibiscus insularis* – Phillip Island
- *Endiandra globose* – Black Walnut
- *Eucalyptus synandra* – Mallee
- *Eucalyptus stoatei*
- *Ptherosphaera firzgeraldii* – Dwarf Mountain Pine
- *Prostanthera cineolifera*
- *Senna acclinise* – Rainforest Cassia
- *Wollemia nobilis* – Wollemi Pine

A detailed catalogue of the Australian native plants which have already been established by SHNBSG is maintained on its website at [www.shnbotanicgarden.org.au](http://www.shnbotanicgarden.org.au)

## 12. SITE WEED LIST

Common Name	Control method used by group
Asparagus fern	Hand weeding
Small leaf oxalis	Spot spraying with Glyphosate
Wandering jew	Hand weeding

### 13. NATIVE SPECIES LIST (EXISTING)

The original western part of Curtis Reserve was planted out by Friends of the Curtis Park Arboretum with an extensive range of trees and shrubs and groundcovers native to eastern Australia.

This was subsequently added to by planting West Australian natives on part of the eastern side of Curtis Reserve.

A detailed catalogue of these Australian native plants is maintained on SHNBG's website at [www.shnbotanicgarden.org.au](http://www.shnbotanicgarden.org.au)

**All works undertaken pursuant to this action plan are to be to the satisfaction of the Open Spaces Assets Coordinator**

**Parkcare Group Name** Shoalhaven Heads Native Botanic Garden Parkcare Group

**Coordinator Name** Rob Stewart

**Signature** .....

**Date** .... / ....